

EVALUATION OF THE DEGREE PROGRAM AND THE UNIVERSITY EXPERIENCE

MASTER OF SCIENCE IN ECONOMIC AND SOCIAL SCIENCES a.y. 2022-2023

SURVEY PERIOD: JULY 2023 - APRIL 2024

N° QUESTIONNAIRES PROCESSED: 133

N° OF GRADUATE STUDENTS: 143

RESPONSE RATE: 93,0%



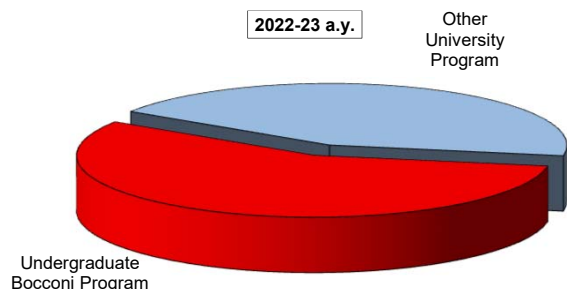
EVALUATION OF UNIVERSITY EXPERIENCE

Economic and Social Sciences

General information

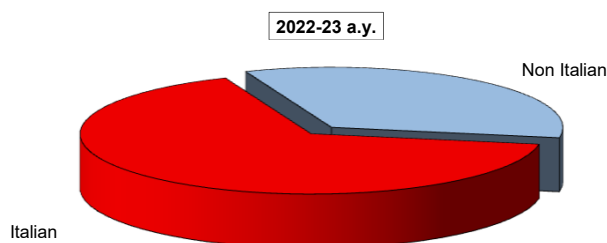
Undergraduate Career

Answers	a. v.	%	
		2022-23	2021-22
Undergraduate Bocconi Program	75	56,4	68,3
Other University Program	58	43,6	31,7
Total	133	100,0	100,0
NA	0		



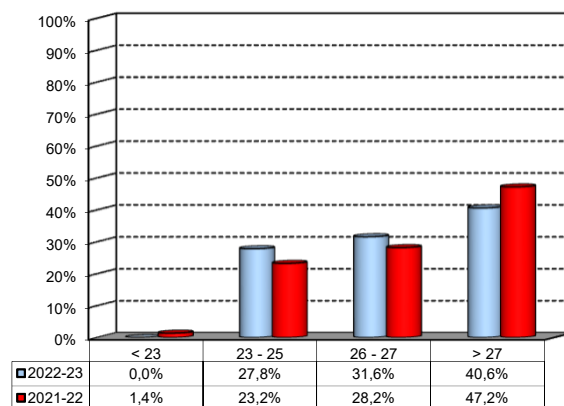
Nationality

Answers	a. v.	%	
		2022-23	2021-22
Italian	88	66,2%	76,8%
Non Italian	45	33,8%	23,2%
Total	133	100%	100%
NA	0		



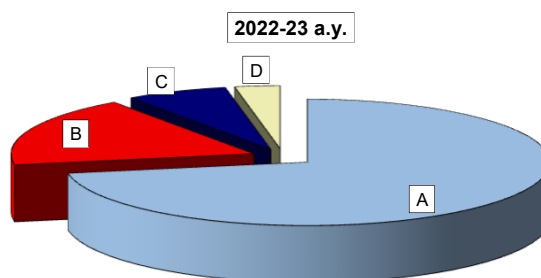
Average mark of the exams passed: (approximate average expressed in 30/30)

Answers	a. v.	%
meno di 23	0	0,0%
23-25	37	27,8%
26-27	42	31,6%
maggiore di 27	54	40,6%
Total	133	100%
NA	0	



How many of the courses included in your curriculum did you attend regularly?

Answers	a. v.	%	
		2022-23	2021-22
A - More than 75%	96	72,2	73,9
B - Between 50 and 75%	24	18,0	16,9
C - Between 25 and 50%	9	6,8	5,6
D - Less than 25%	4	3,0	3,5
Total	133	100,0	100,0
NA	0		

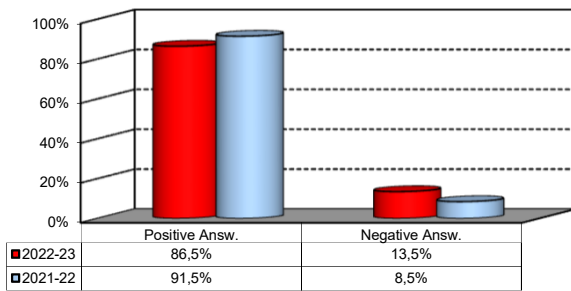


Study Experience

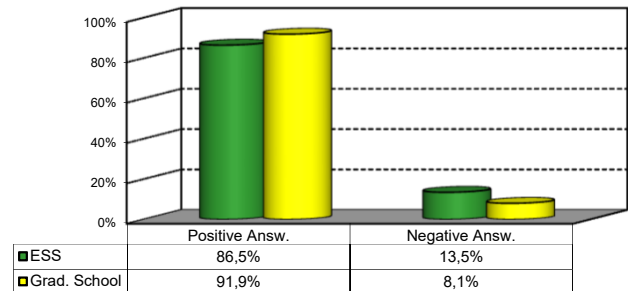
1) On the whole, do you think that the MSc program you attended at Bocconi enabled in-depth study of topics in both a theoretical and a practical sense?

Answers	Italian		Non Italian		Total	
	a.v.	%	a.v.	%	a.v.	%
A - Definitely YES	53	60,2%	18	40,0%	71	53,4%
B - More YES than NO	26	29,5%	18	40,0%	44	33,1%
C - More NO than YES	8	9,1%	7	15,6%	15	11,3%
D - Definitely NO	1	1,1%	2	4,4%	3	2,3%
Total	88	100%	45	100%	133	100%
NA	0		0			

Over time comparison



Comparison with the overall School data

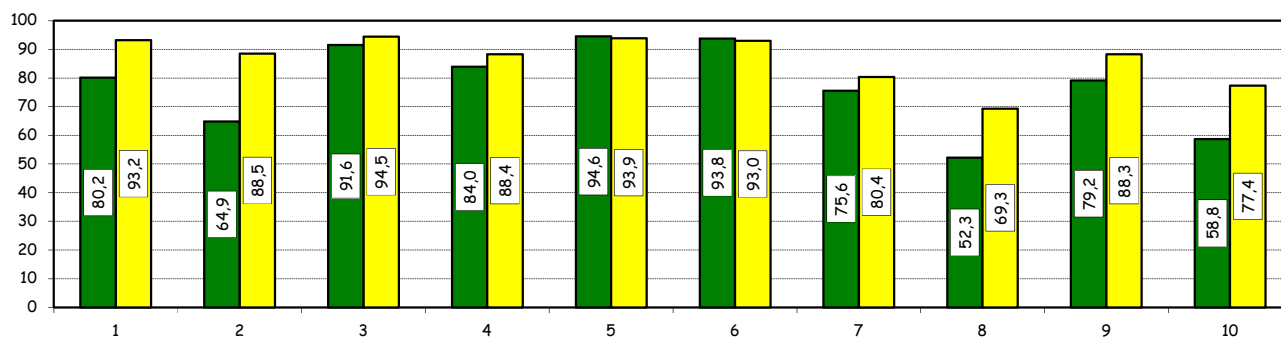


Study Experience

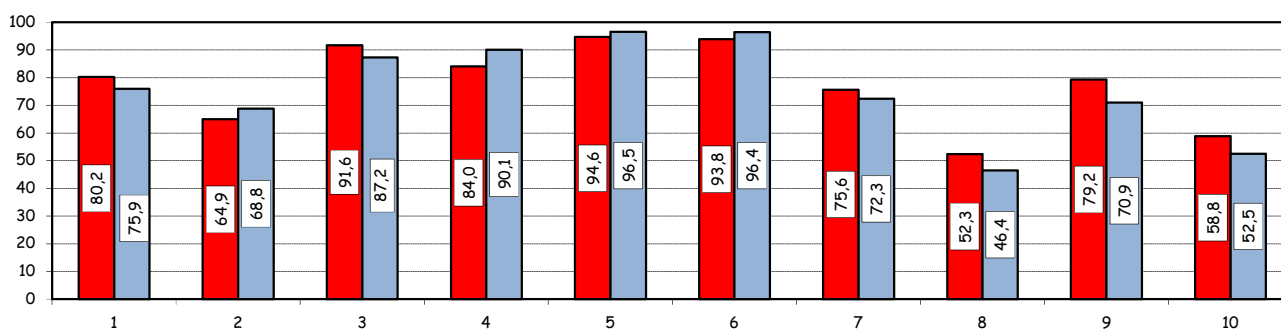
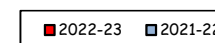
2) Do you think that your course of study at Bocconi has contributed to the development of the following skills?

Soft Skill	Item	Definitely YES		More YES than NO		More NO than YES		Definitely NO		Total		n.a.
		a.v.	%	a.v.	%	a.v.	%	a.v.	%	a.v.	%	a.v.
1	Ability to work in team	40	30,5	65	49,6	21	16,0	5	3,8	131	100,0	2
2	Interpersonal skills	35	26,7	50	38,2	36	27,5	10	7,6	131	100,0	2
3	Organizational skills	73	55,7	47	35,9	8	6,1	3	2,3	131	100,0	2
4	Critical thinking skills	71	54,2	39	29,8	15	11,5	6	4,6	131	100,0	2
5	Ability to analyze and select information	91	70,0	32	24,6	6	4,6	1	0,8	130	100,0	3
6	Problem-solving ability	81	62,3	41	31,5	6	4,6	2	1,5	130	100,0	3
7	Written communication skills	52	39,7	47	35,9	26	19,8	6	4,6	131	100,0	2
8	Verbal communication skills	23	17,7	45	34,6	51	39,2	11	8,5	130	100,0	3
9	Ability to cope with stress	70	53,8	33	25,4	14	10,8	13	10,0	130	100,0	3
10	Entrepreneurial spirit	35	26,7	42	32,1	30	22,9	24	18,3	131	100,0	2

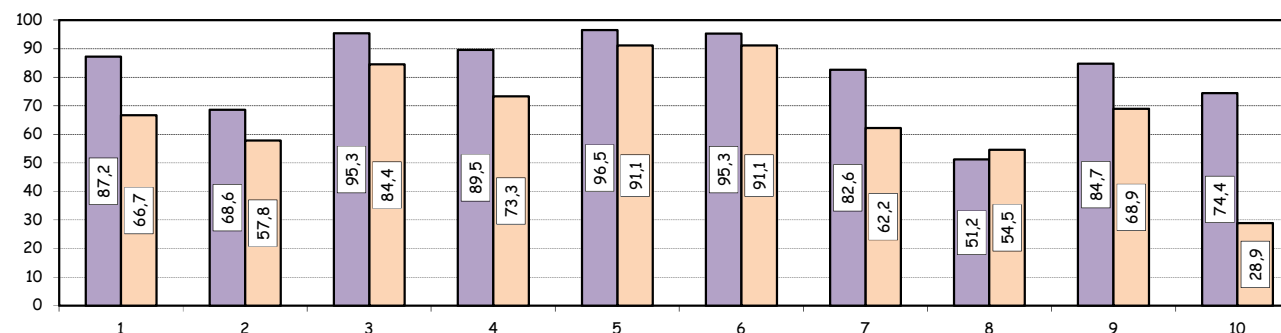
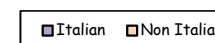
Positive answers (%):
comparison with the overall School data



Positive answers (%):
Over time comparison



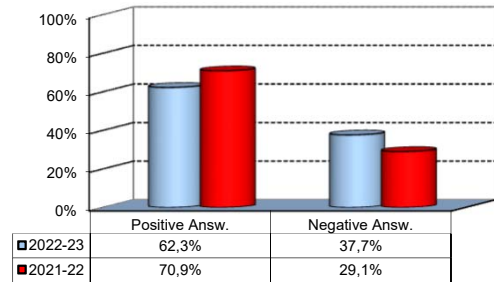
Positive answers (%):
comparison based on nationality of student



Study Experience

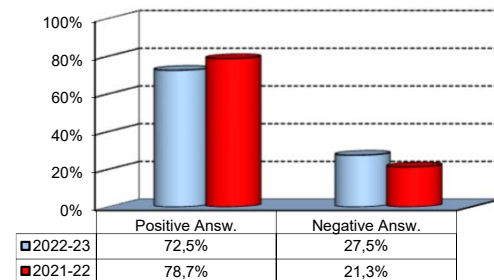
3) Do you think that teaching activities in the MSc program were structured in an active manner (frequent use of teamwork, case studies, assignments, etc.)?

Answers	a.v.	%
A - Definitely YES	29	22,3%
B - More YES than NO	52	40,0%
C - More NO than YES	40	30,8%
D - Definitely NO	9	6,9%
Total	130	100%
NA	3	



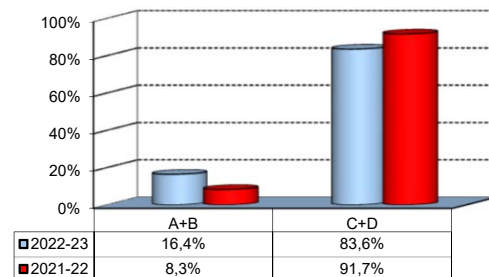
4) Do you think that the courses in your curriculum were adequately coordinated with each other?

Answers	a.v.	%
A - Definitely YES	36	27,5%
B - More YES than NO	59	45,0%
C - More NO than YES	30	22,9%
D - Definitely NO	6	4,6%
Total	131	100%
NA	2	



5) During the MSc program, did you notice any unnecessary overlaps or repetitions of subjects and content with what you studied during your undergraduate program?

Answers	a.v.	%
A-Very often	4	5,5%
B-Often	8	11,0%
C-Hardly ever	37	50,7%
D-Never	24	32,9%
Total	73	100%
NA	60	



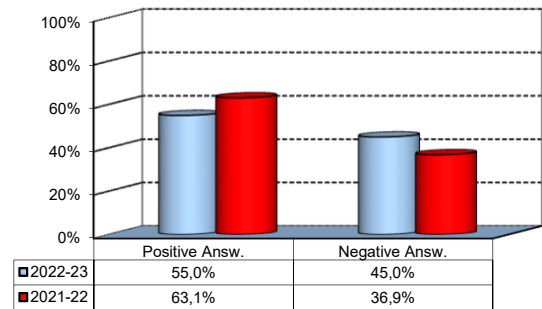
Please select the course or courses in the MSc program in which you encountered overlaps or unnecessary repetitions (multiple answers admitted)

Course	a.v.	%
ANALISI ECONOMETRICA - ECONOMETRICS	4	17,4%
MICROECONOMETRICS - EMPIRICAL RESEARCH METHODS AND DATA ANALYSIS	3	13,0%
ISTITUZIONI, GOVERNO E SOCIETA' - MODULO I - EMPIRICAL RESEARCH METHODS AND DATA ANALYSIS	2	8,7%
ISTITUZIONI, GOVERNO E SOCIETA' - MODULO II B - CULTURE, INSTITUTIONS AND DEVELOPMENT	2	8,7%
Other	12	52,2%
TOTAL	23	100,0%

Study Experience

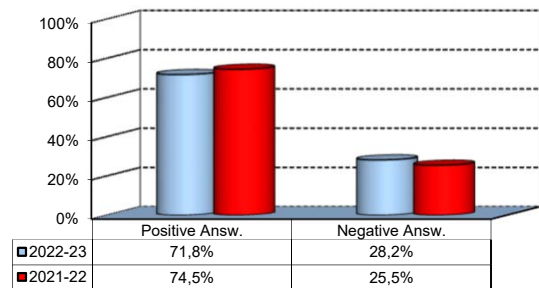
6) Do you think that the overall study load was compatible with the length of the program?

Answers	a. v.	%
A - Definitely YES	22	16,8%
B - More YES than NO	50	38,2%
C - More NO than YES	41	31,3%
D - Definitely NO	18	13,7%
Total	131	100%
NA	2	



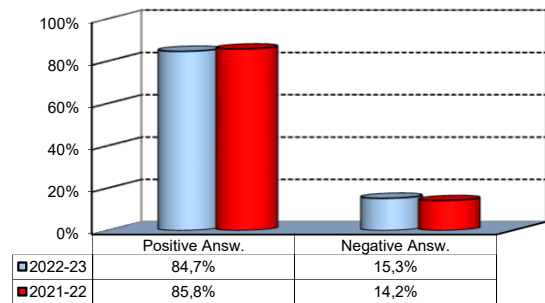
7) Was the coordination of the study program appropriately managed by the Program Director?

Answers	a. v.	%
A - Definitely YES	25	19,1%
B - More YES than NO	69	52,7%
C - More NO than YES	25	19,1%
D - Definitely NO	12	9,2%
Total	131	100%
NA	2	



8) On the whole, were the classroom climate and relationships with your classmates positive and able to enrich your personal experience?

Answers	a. v.	%
A - Definitely YES	49	37,4%
B - More YES than NO	62	47,3%
C - More NO than YES	16	12,2%
D - Definitely NO	4	3,1%
Total	131	100%
NA	2	

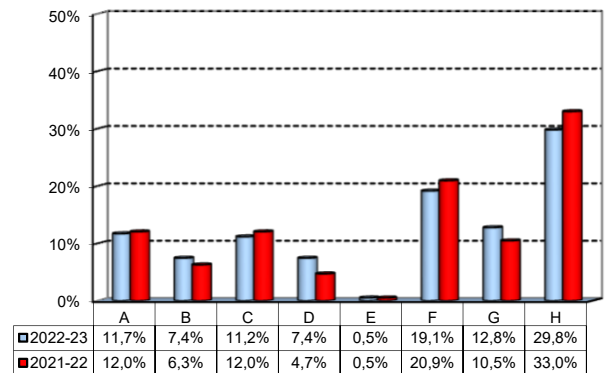


Extracurricular Activities

1) Which of the following extracurricular activities did you attend during your study program?

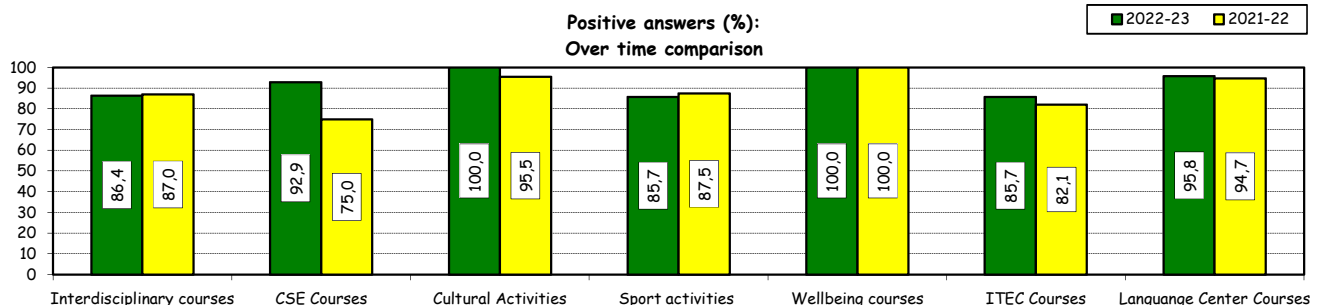
(multiple answers admitted)

Answers	a.v.	%
A - Interdisciplinary courses ("Sapere a tutto campo")	22	11,7%
B - Counseling and Self-Empowerment courses CSE	14	7,4%
C - Cultural Activities (visit museums, concerts, theatre and cinema, various issues)	21	11,2%
D - Sport activities	14	7,4%
E - Wellbeing courses	1	0,5%
F - Courses offered by ITEC	36	19,1%
G - Courses offered by Language Center	24	12,8%
H - None	56	29,8%
Total	188	100%
NA	0	



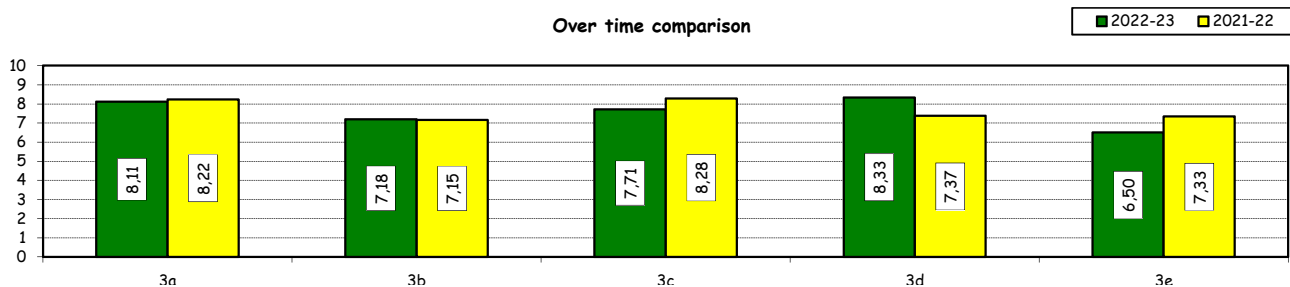
2) Do you think that the activities you took part in contributed to your cultural/educational enrichment?

	Definitely YES		More YES than NO		More NO than YES		Definitely NO		Total		NA
	a.v.	%	a.v.	%	a.v.	%	a.v.	%	a.v.	%	a.v.
A - Interdisciplinary courses	13	59,1	6	27,3	1	4,5	2	9,1	22	100,0	0
B - CSE courses	6	42,9	7	50,0	1	7,1	0	0,0	14	100,0	0
C - Cultural Activities	10	47,6	11	52,4	0	0,0	0	0,0	21	100,0	0
D - Sport activities	5	35,7	7	50,0	2	14,3	0	0,0	14	100,0	0
E - Wellbeing courses	1	100,0	0	0,0	0	0,0	0	0,0	1	100,0	0
F - ITEC courses	18	51,4	12	34,3	5	14,3	0	0,0	35	100,0	1
G - Language Center courses	13	54,2	10	41,7	1	4,2	0	0,0	24	100,0	0



How would you evaluate:

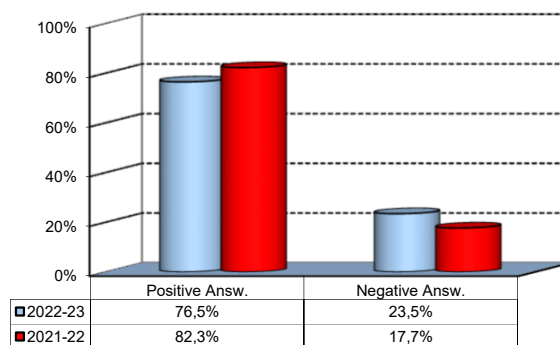
Item	Answers	Negative				Positive				Total		NA
		1-2		3-4-5		6-7-8		9-10		a.v.	%	
		a.v.	%	a.v.	%	a.v.	%	a.v.	%			
3a) The range and interest of programmes offered	1	1,3	4	5,3	39	52,0	31	41,3	75	100,0	2	
3b) The support you received from the Campus Life Office	2	2,8	10	13,9	41	56,9	19	26,4	72	100,0	5	
3c) The support you received from ITEC	1	2,9	6	17,1	11	31,4	17	48,6	35	100,0	1	
3d) The support you received from Language Center	0	0,0	1	4,2	9	37,5	14	58,3	24	100,0	0	
3e) The support you received from Bocconi Sport Team	1	7,1	4	28,6	5	35,7	4	28,6	14	100,0	0	



Degree Thesis

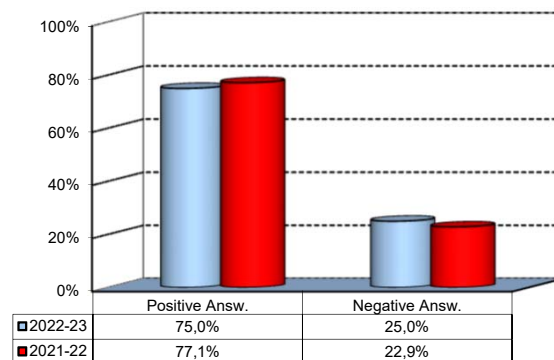
1) Do you think that the supervision and the assistance for preparing for your thesis were appropriate?

Answers	a.v.	%
A - Definitely YES	60	45,5%
B - More YES than NO	41	31,1%
C - More NO than YES	17	12,9%
D - Definitely NO	14	10,6%
Total	132	100%
NA	1	



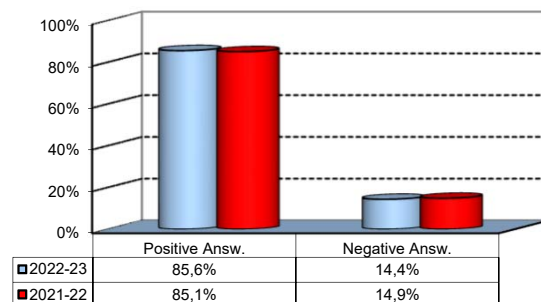
2) Do you think that the facilities provided by the University (library, computer labs) adequately supported preparation for your thesis?

Answers	a.v.	%
A - Definitely YES	51	38,6%
B - More YES than NO	48	36,4%
C - More NO than YES	30	22,7%
D - Definitely NO	3	2,3%
Total	132	100%
NA	1	



3) Do you think that your thesis was a useful experience for completing your education and a way to verify your planning and writing skills?

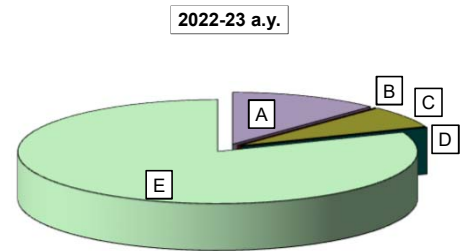
Answers	a.v.	%
A - Definitely YES	63	47,7%
B - More YES than NO	50	37,9%
C - More NO than YES	12	9,1%
D - Definitely NO	7	5,3%
Total	132	100%
NA	1	



Experience Of Studying Abroad

1) Please select the program you participated in:

Answers	a.v.	%	
		2022-23	2021-22
A - Exchange	16	12,1	8,5
B - CEMS-MIM	0	0,0	0,0
C- Double Degree	9	6,8	5,7
D - Free-Mover	0	0,0	0,0
E- None	107	81,1	85,8
Total	132	100,0	100,0
NA	1		

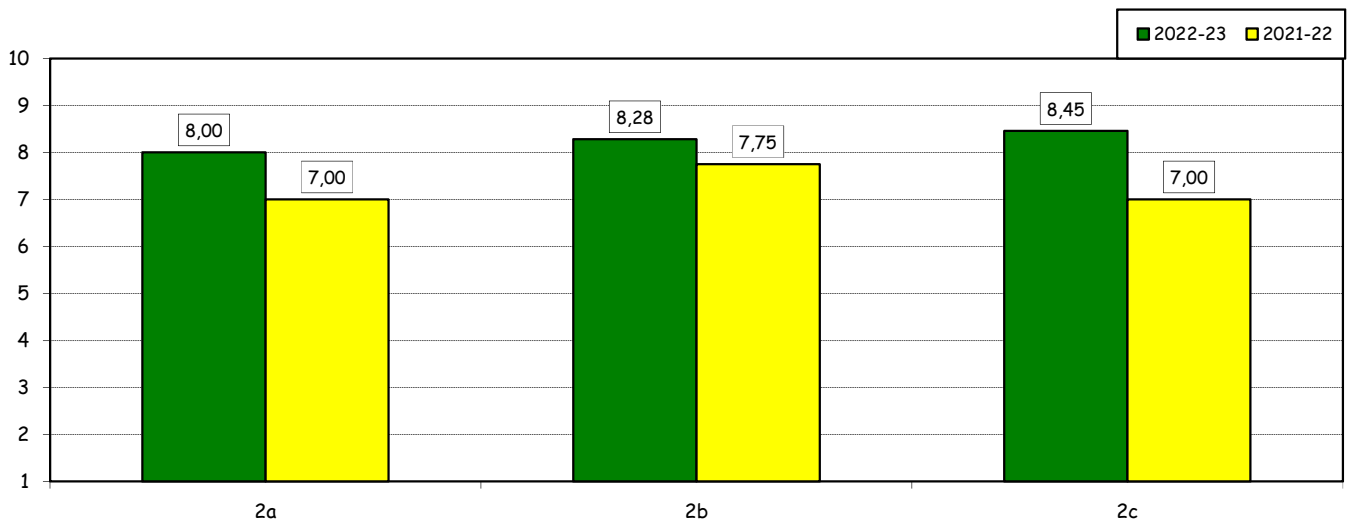


How would you evaluate:

(only A, B, C or E answers to item no.1)

Item	Answers	Negative				Positive				Total		N.A. a.v.
		1-2		3-4-5		6-7-8		9-10		a.v.	%	
		a.v.	%	a.v.	%	a.v.	%	a.v.	%			
2a) Quality and completeness of information provided through: 'International Week', emails, brochures, International Relations Service web page.		0	0,0	4	16,0	8	32,0	13	52,0	25	100,0	0
2b) The range and interest of programs offered.		1	4,0	2	8,0	7	28,0	15	60,0	25	100,0	0
2c) The support you received from Bocconi International Relations.		1	4,5	1	4,5	7	31,8	13	59,1	22	100,0	3

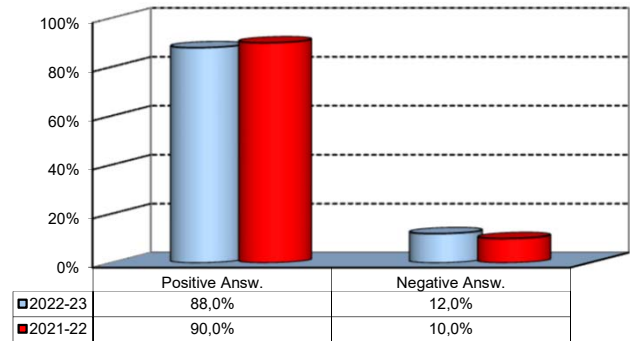
Over time comparison



Experience Of Studying Abroad

3) Would you positively evaluate this experience?

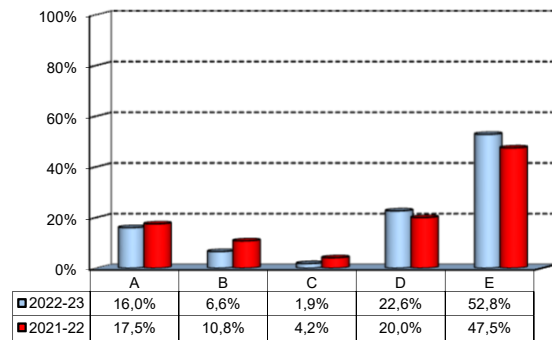
Answers	v. a.	%
A - Definitely YES	18	72,0%
B - More YES than NO	4	16,0%
C - More NO than YES	3	12,0%
D - Definitely NO	0	0,0%
Total	25	100%
NA	0	



(In case of answer "E" to item no.1)

4) Please indicate why you did not attend a period of study abroad (select all relevant reasons):

Answers	a. v.	%
A-Lack of interest in this kind of experience	17	16,0%
B-Absence of the requirements needed for participation in the program selected	7	6,6%
C-Rejection of your application	2	1,9%
D-Lack of time during the period of study	24	22,6%
E-Other (personal, family, organizational reasons, etc.)	56	52,8%
Total	106	100%
NA	1	



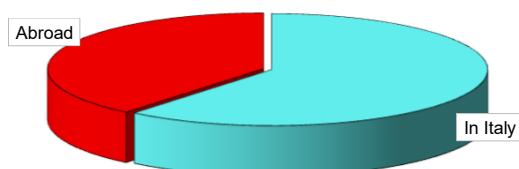
Internship Activities

1) Which activity recognized in your curriculum did you complete during the MSc program?

Answers	a.v.	%	
		2022-23	2021-22
A - Internship/Other job experience	128	96,2	91,2
B - Alternative Activity [^]	5	3,8	8,8
Total	133	100,0	100,0
NA	0		

3) Where did you complete the internship recognized by the Bachelor program?

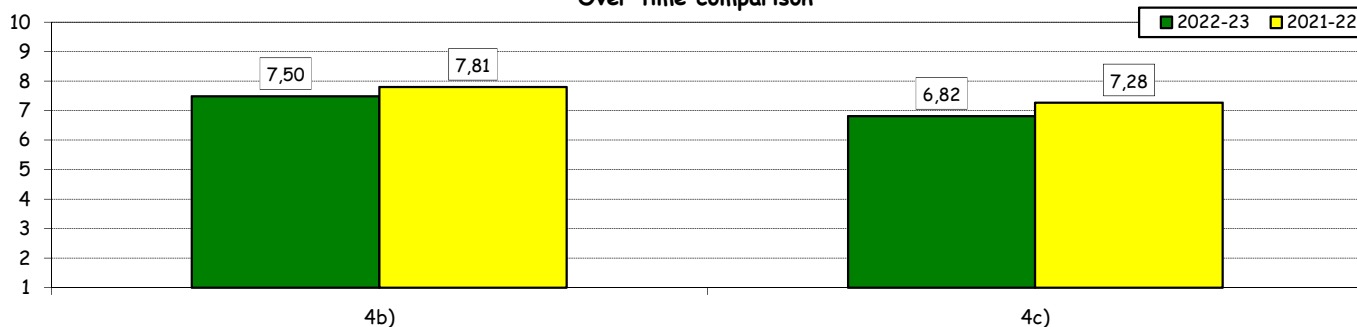
Answers	a.v.	%	
		2022-23	2021-22
In Italy	78	60,9%	55,6%
Abroad	50	39,1%	44,4%
Total	128	100%	100%
NA	0		



How would you evaluate:

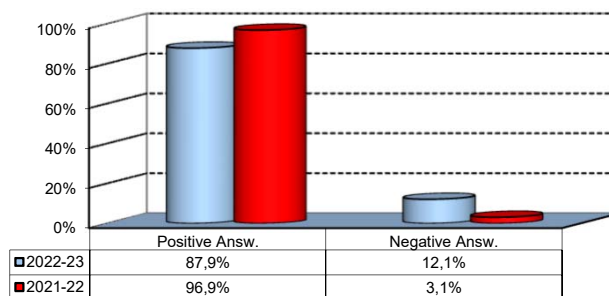
Item	Answers	Negative				Positive				Total		N.A. a.v.
		1-2		3-4-5		6-7-8		9-10		a.v.	%	
		a.v.	%	a.v.	%	a.v.	%	a.v.	%			
4a) The number and variety of opportunities offered.	3	2,8	12	11,2	55	51,4	37	34,6	107	100,0	21	
4b) The support you received from the Internship Office.	9	8,4	18	16,8	47	43,9	33	30,8	107	100,0	21	

Over time comparison



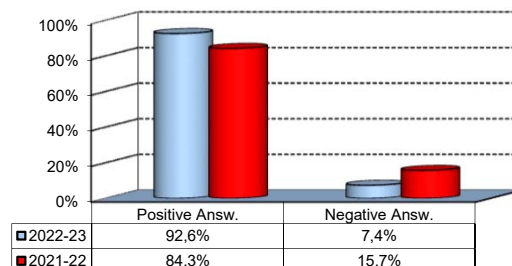
5) Would you positively evaluate this experience?

Answers	a.v.	%
A - Definitely YES	57	53,3%
B - More YES than NO	37	34,6%
C - More NO than YES	11	10,3%
D - Definitely NO	2	1,9%
Total	107	100%
NA	21	



6) Do you think that the qualifications you acquired while attending the MSc program were appropriate to perform this activity?

Answers	a.v.	%
A - Definitely YES	58	53,7%
B - More YES than NO	42	38,9%
C - More NO than YES	6	5,6%
D - Definitely NO	2	1,9%
Total	108	100%
NA	20	



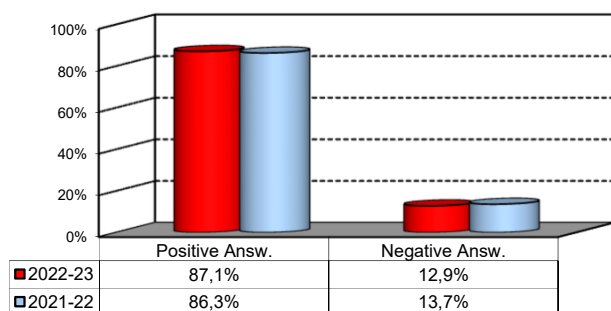
[^]: During the pandemic, students were given the opportunity to replace the mandatory internship with an alternative activity called Career Start Pack. It consists in an elective exam integrated with mandatory participation in the virtual career orientation path

General satisfaction and short-term plans

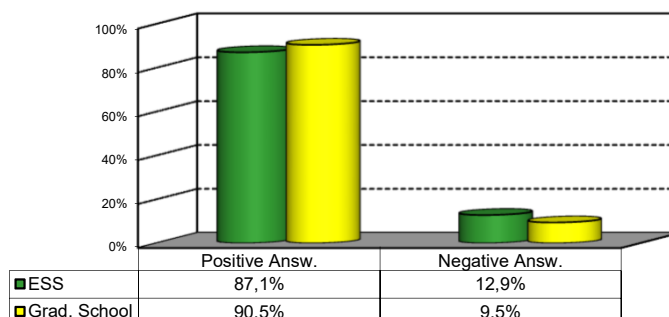
1) Are you satisfied overall with the study program you attended?

Answers	Italian		Non Italian		Total	
	a.v.	%	a.v.	%	a.v.	%
A - Definitely YES	41	47,1%	16	35,6%	57	43,2%
B - More YES than NO	35	40,2%	23	51,1%	58	43,9%
C - More NO than YES	7	8,0%	4	8,9%	11	8,3%
D - Definitely NO	4	4,6%	2	4,4%	6	4,5%
Total	87	100%	45	100%	132	100%
NA	1		0		1	

Over time comparison



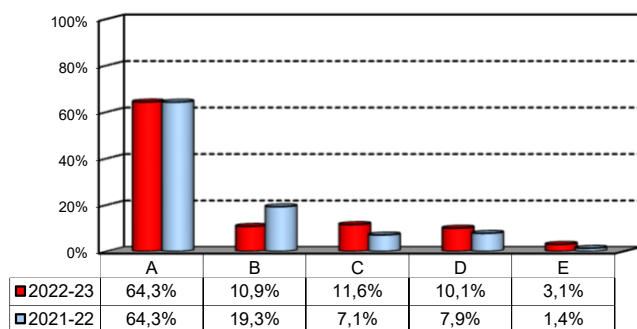
Comparison with the overall School data



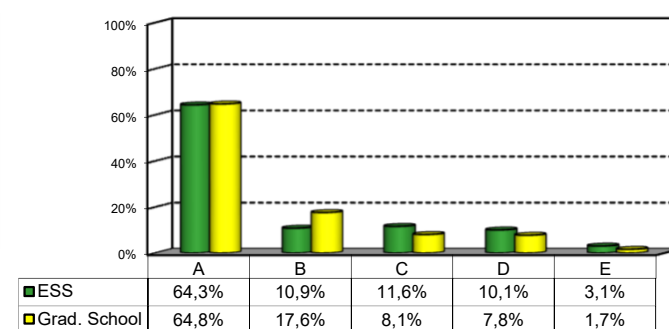
2a) If you could go back in time, would you enroll in the University again?

Answers	Italian		Non Italian		Total	
	v.a.	%	v.a.	%	v.a.	%
A-YES, in the same program at this University	62	72,1%	21	48,8%	83	64,3%
B-YES, in another program at this University	11	12,8%	3	7,0%	14	10,9%
C-YES, in the same program but at another University	6	7,0%	9	20,9%	15	11,6%
D-YES, in another program at another University	6	7,0%	7	16,3%	13	10,1%
E-NO, I would not enrol in university anymore	1	1,2%	3	7,0%	4	3,1%
Total	86	100%	43	100%	129	100%
NA	2		2		4	

Over time comparison



Comparison with the overall School data



General satisfaction and short-term plans

(In case of answer "B" to item no.2a)

2b) Which program would you enroll at this University?

MSc	a.v.	%
ACME	1	7,7%
AFC	3	23,1%
FIN	3	23,1%
CLELI	1	7,7%
ESS	1	7,7%
EMIT	0	0,0%
GIO	1	7,7%
IM	3	23,1%
M	0	0,0%
MM	0	0,0%
CYBER	0	0,0%
Total	13	100%
NA	1	

2c) Why would you make a different choice?

(In case of answer "B", "C", "D" or "E" to item no.2a)

Answers	a.v.	% 2022-23	% 2021-22
A - My interest has changed over time / I discovered that I have different attitudes	17	37,8%	59,2%
B -The MS program did not satisfy my expectations	9	20,0%	24,5%
C I would have preferred to attend the same MS program but taught in English	2	4,4%	0,0%
D - Other reasons	17	37,8%	16,3%
Total	45	100%	100%
NA	1		

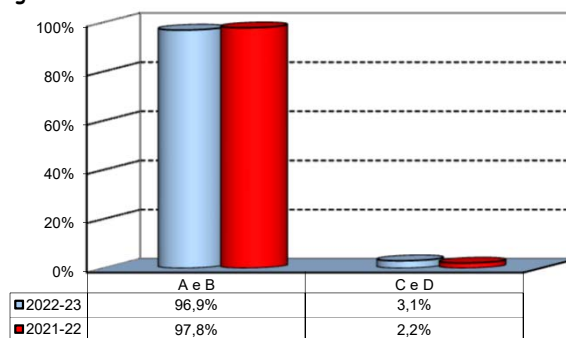
D- Other reasons:

Bocconi and ESS environment is toxic. Quality of life is terrible given to quantity of study, you are a PhD student without even wanting to be Bocconi takes pride on its reputation albeit a complete lack of institutional organization: little help available, unapproachable professors who show little interest on helping students, unrealistically heavy workload for ESS requires more than 2 years.
Corso eccessivamente teorico e con non necessari approfondimenti matematici astratti, che dovrebbero essere dedicati a corsi opzionali che studenti interessati a dottorati e esperienze piu' quantitative potrebbero scegliere. Troppo poco pratico
For a 2-year course, ESS fails to provide students with the time to prepare for PhD applications (from RA-ing to the actual process of applying).
I did not have enough theoretical background to navigate smoothly the curriculum.
I didn't quite enjoy how ESS is structured - tons of students thus the evaluations were exam-oriented. Plus my interest's changed over time thus I'd definitely pick another course. Also, I'd prefer another country where the bureaucracy is flowing better.
I hated the teaching method, i.e. 100% focused on memorising. I loved the rest of my experience at Bocconi. But I only had practical experience in 2 or 3 courses. No utility for the real world besides the diploma itself. Overall, I was disappointed...
I knew ESS would be a challenge but it turned out to be a bit too much for me.
I prefer constant assessment style of teaching
I would have not stayed in Italy
Il corso soffre di diverse lacune
My background did not adequately prepare me for the difficulty of the Bocconi program
The lack of organization and sometimes preparation given by the courses was totally unnecessary and reflects negatively on the goals students are willing to achieve. It generates anxiety and made me miserable over the last 6 months :)
The organisational side of Bocconi was lacking. Changing schedules, teachers with poor English speaking skills etc. I would recommend less lectures more tutorials and active learning. Also just drop the Italian language requirement, waste of time.
There is no support for the international students who did not attend their Bachelor's at Bocconi University and there is no potential for having interpersonal relations with the professors.
This question doesn't make sense.

Infrastructure: Classrooms, Library And Facilities

1) What is your opinion about the classrooms where lessons and other teaching activities have been held?*

Answers	a.v.	%
A - Always or nearly always adequate	94	72,3%
B - Often adequate	32	24,6%
C - Rarely adequate	3	2,3%
D - Never adequate	1	0,8%
E - I did not use them	0	0,0%
Total	130	100%
NA	3	

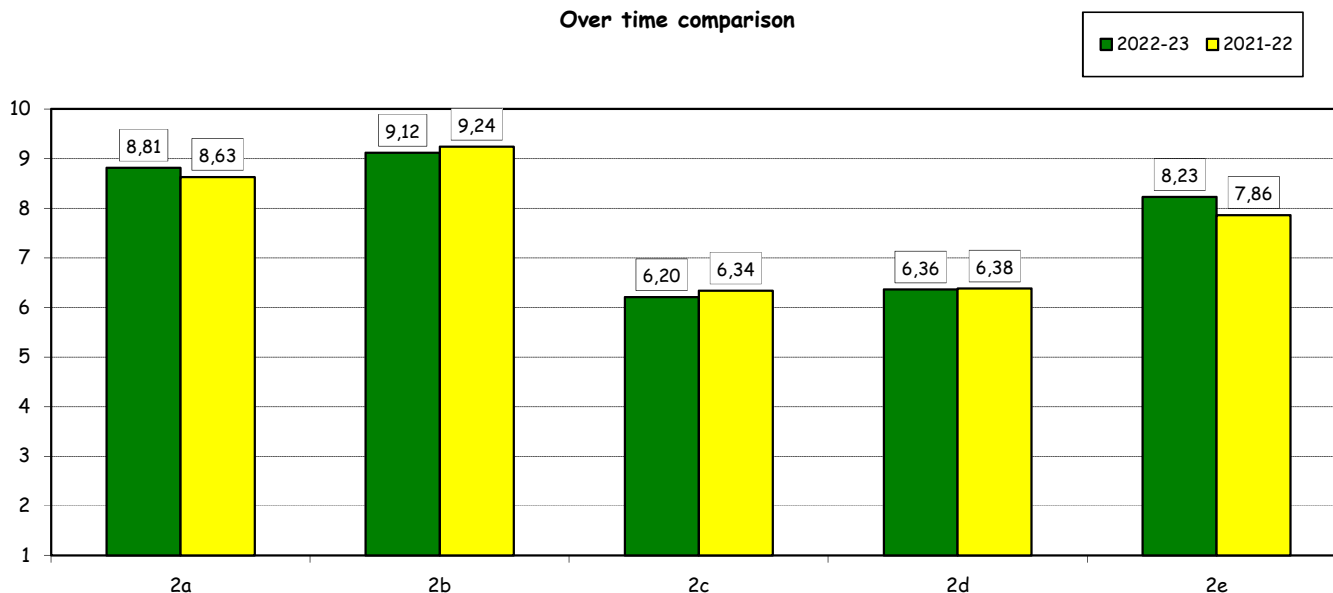


2) How would you evaluate:

(In case of answer "A", "B", "C" or "D" to item no.1)

Item	Answers	Negative				Positive				Total		NA	N.R.
		1-2		3-4-5		6-7-8		9-10		a.v.	%		
		a.v.	%	a.v.	%	a.v.	%	a.v.	%				
a) The adequacy of the audio and multimedia systems (e.g. instructor's computer, projectors, video players) installed in the classrooms.	1	0,8	2	1,6	42	32,6	84	65,1	129	100,0		4	
b) The cleanliness of classrooms and of other common areas on campus (corridors, halls, study rooms).	1	0,8	0	0,0	31	24,2	96	75,0	128	100,0		5	
c) The adequacy of the amount of areas/seats reserved to individual study in the University Library.	19	14,8	33	25,8	38	29,7	38	29,7	128	100,0	0	5	
d) The adequacy of the amount of areas/seats reserved to individual study in other buildings on campus.	17	13,3	34	26,6	41	32,0	36	28,1	128	100,0	0	5	
e) The clarity and adequacy of the signage system on campus.	2	1,6	9	7,3	51	41,1	62	50,0	124	100,0		9	

Over time comparison

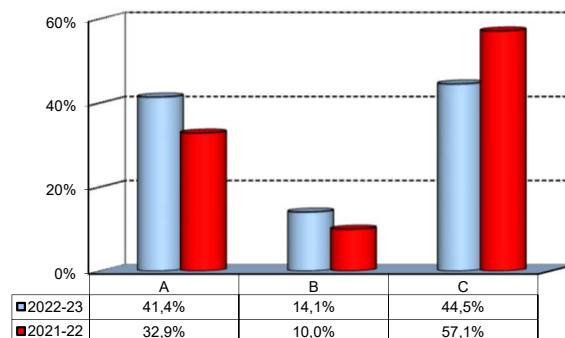


(*): the percentage shown on the graphs is calculated by excluding the responses of those who declare that they have not used the service.

Infrastructure: Classrooms, Library And Facilities

3) What is your overall opinion on the PC Labs and IT facilities provided by the University?

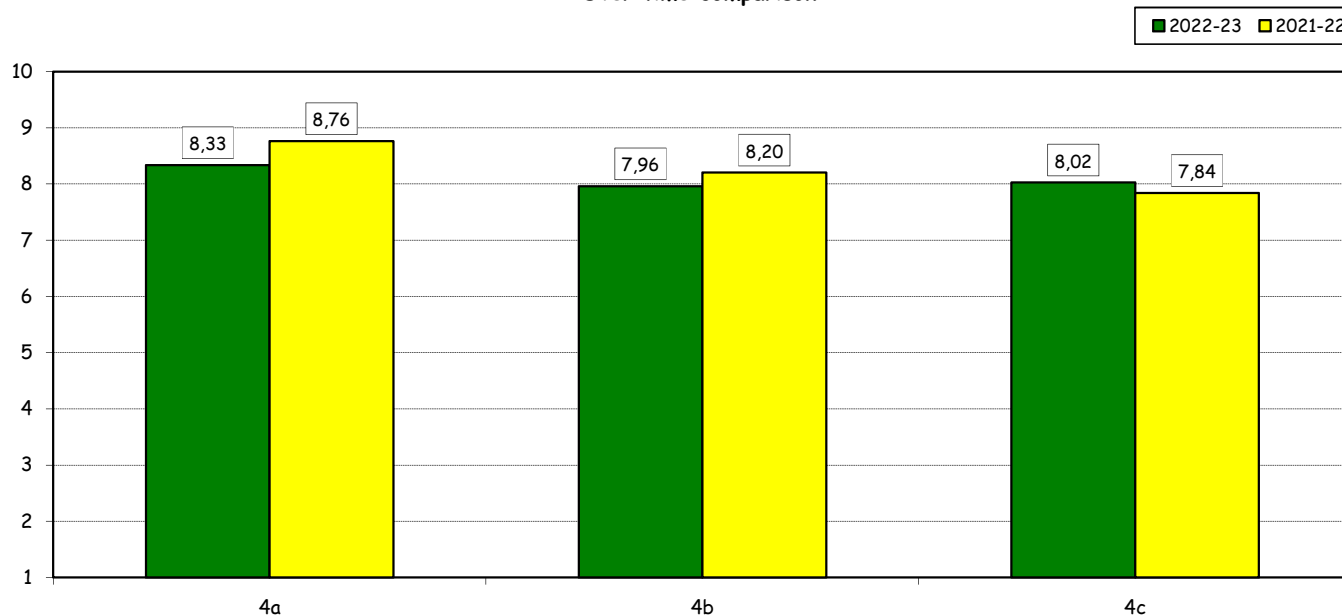
Answers	a.v.	%
A- Adequate in number	53	41,4%
B- Inadequate in number	18	14,1%
C- Never used	57	44,5%
Total	128	100%
NA	5	



4) How do you evaluate:

Item	Answers	Negative				Positive				Total		N.R.
		1-2		3-4-5		6-7-8		9-10		a.v.	%	
		a.v.	%	a.v.	%	a.v.	%	a.v.	%			
a) The availability of technical staff supporting students (Tutors) in PC Labs.*		2	3,0	5	7,6	27	40,9	32	48,5	66	100,0	5
b) The convenience of the PC Labs' opening hours.*		4	6,0	3	4,5	31	46,3	29	43,3	67	100,0	4
c) The level of accessibility and usability of the University's IT services (Internet access points, Punto Blu, Virtual Punto Blu, wireless connection).		3	2,5	10	8,2	58	47,5	51	41,8	122	100,0	6

Over time comparison

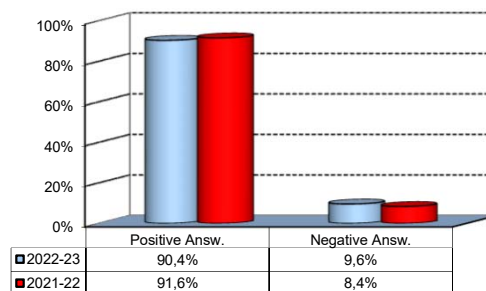


(*): Only in case of answer "A" or "B" to item no.3

Infrastructure: Classrooms, Library And Facilities

5) What is your overall opinion on the Library's services, such as support for individual study?*

Answers	a.v.	%
A - Very Positive	45	34,9%
B - Quite positive	49	38,0%
C - Quite negative	9	7,0%
D - Very Negative	1	0,8%
E - Never used	25	19,4%
Total	129	100%
NA	4	

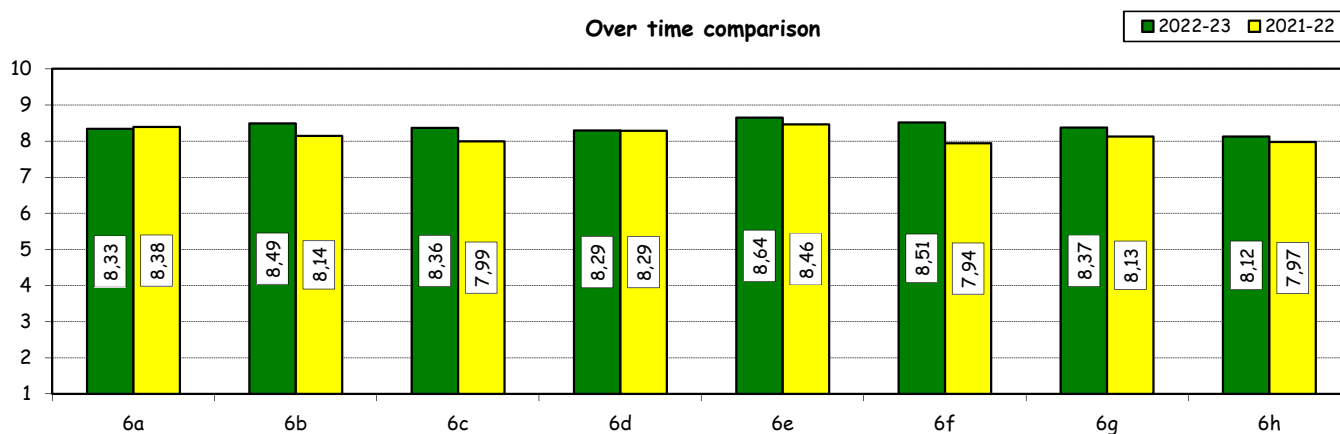


6) How would you evaluate:

(In case of answer "A", "B", "C" or "D" to item no. 5)

Item	Answers	Negative				Positive				Total		N.A.
		1-2		3-4-5		6-7-8		9-10		a.v.	%	
		a.v.	%	a.v.	%	a.v.	%	a.v.	%			
a) The convenience of the Library's opening hours and access to its main services.		1	1,3	2	2,6	33	42,3	42	53,8	78	100,0	26
b) Range of subjects covered in hardcopy collections (books and journals) compared to your needs of study and research		0	0,0	4	5,3	31	40,8	41	53,9	76	100,0	28
c) The relevance and updating of online collections (e-books, e-journals, databases) compared to your needs of study and research		0	0,0	3	4,2	34	47,2	35	48,6	72	100,0	32
d) The ease of use of search tools available on the Library website		0	0,0	6	7,9	29	38,2	41	53,9	76	100,0	28
e) The assistance provided by the Library staff		0	0,0	4	5,3	23	30,3	49	64,5	76	100,0	28
f) Availability of documents (textbooks, articles, chapters, case studies, etc.) used in individual courses		0	0,0	5	6,6	26	34,2	45	59,2	76	100,0	28
g) The Library website as a source of information on the services offered and as a point of access for resources		0	0,0	5	6,6	29	38,2	42	55,3	76	100,0	28
h) The usefulness of workshops offered by the Library to understand how to use the resources available (catalogues, e-journals, databases, etc.)		1	1,3	8	10,7	26	34,7	40	53,3	75	100,0	29

Over time comparison



(*): the percentage shown on the graphs is calculated by excluding the responses of those who declare that they have not used the service.