

**EVALUATION OF  
THE DEGREE PROGRAM AND THE  
UNIVERSITY EXPERIENCE**

**BACHELOR IN  
MATHEMATICAL AND COMPUTING  
SCIENCES FOR ARTIFICIAL INTELLIGENCE**

**N° QUESTIONNAIRES PROCESSED: 26**

**N° OF GRADUATE STUDENTS: 29**

**RESPONSE RATE: 89,7%**



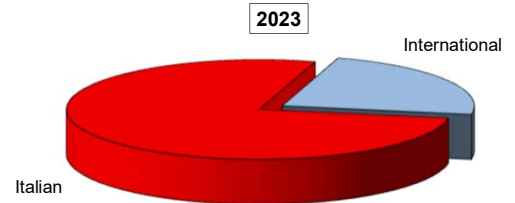
# EVALUATION OF STUDENT EXPERIENCE

## Mathematical and Computing Sciences for Artificial Intelligence

### General information

#### School Career

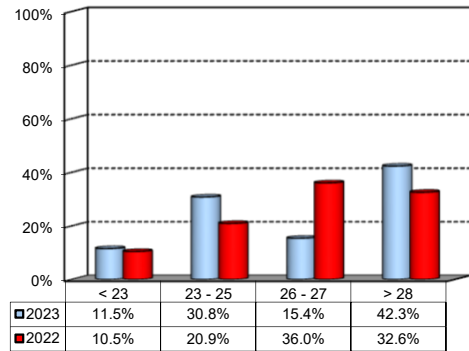
Answers	%	
	a.v.	2023
Italian	20	76.9%
International	6	23.1%
<b>Total</b>	<b>26</b>	<b>100%</b>
NA	0	



#### Average mark of the exams passed:

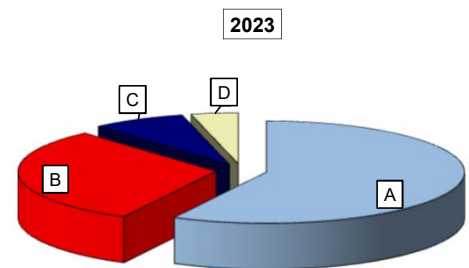
(approximate average expressed in 30/30)

Answers	a.v.	%
< 23	3	11.5%
23 - 25	8	30.8%
26 - 27	4	15.4%
> 28	11	42.3%
<b>Total</b>	<b>26</b>	<b>100%</b>
NA	0	



#### How many of the courses included in your curriculum did you attend regularly?

Answers	%	
	a.v.	2023
A - More than 75%	15	57.7%
B - Between 50 and 75%	8	30.8%
C - Between 25 and 50%	2	7.7%
D - Less than 25%	1	3.8%
<b>Total</b>	<b>26</b>	<b>100%</b>
NA	0	

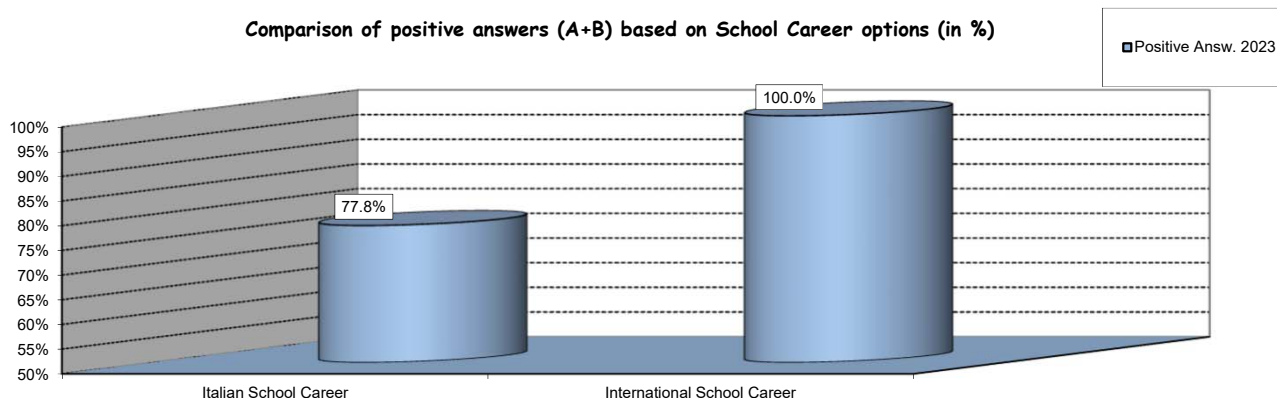


## Study experience

1) Was the knowledge acquired during secondary school adequate to undertake your Bachelor program?

Answers	Italian School Career		International School Career		Total	
	a.v.	%	a.v.	%	a.v.	%
A - Definitely YES	4	22.2%	3	37.5%	7	26.9%
B - More YES than NO	10	55.6%	5	62.5%	15	57.7%
C - More NO than YES	4	22.2%	0	0.0%	4	15.4%
D - Definitely NO	0	0.0%	0	0.0%	0	0.0%
<b>Total</b>	<b>18</b>	<b>100%</b>	<b>8</b>	<b>100%</b>	<b>26</b>	<b>100%</b>
NA	0		0		0	

Comparison of positive answers (A+B) based on School Career options (in %)



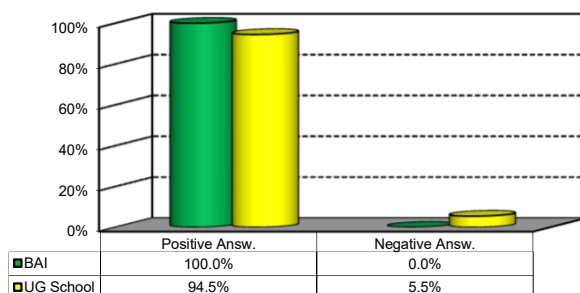
2) if you answered "More NO than YES" or "Definitely NO", indicate the subject or the subjects for which your previous knowledge was revealed to be insufficient:

	a.v.	%
ALGEBRA AND GEOMETRY	2	18.2%
MATHEMATICAL ANALYSIS - MODULE 1	2	18.2%
Other	7	63.6%
<b>Total</b>	<b>11</b>	<b>100%</b>

3) On the whole, do you appreciate the qualifications you acquired at the end of the Bachelor program at Bocconi?

Answers	Italian school Career		Int.nal School Career		Total	
	v.a.	%	v.a.	%	v.a.	%
A - Definitely YES	9	50.0%	1	12.5%	10	38.5%
B - More YES than NO	9	50.0%	7	87.5%	16	61.5%
C - More NO than YES	0	0.0%	0	0.0%	0	0.0%
D - Definitely NO	0	0.0%	0	0.0%	0	0.0%
<b>Total</b>	<b>18</b>	<b>100%</b>	<b>8</b>	<b>100%</b>	<b>26</b>	<b>100%</b>
NA	0		0		0	

Comparison with the overall School data

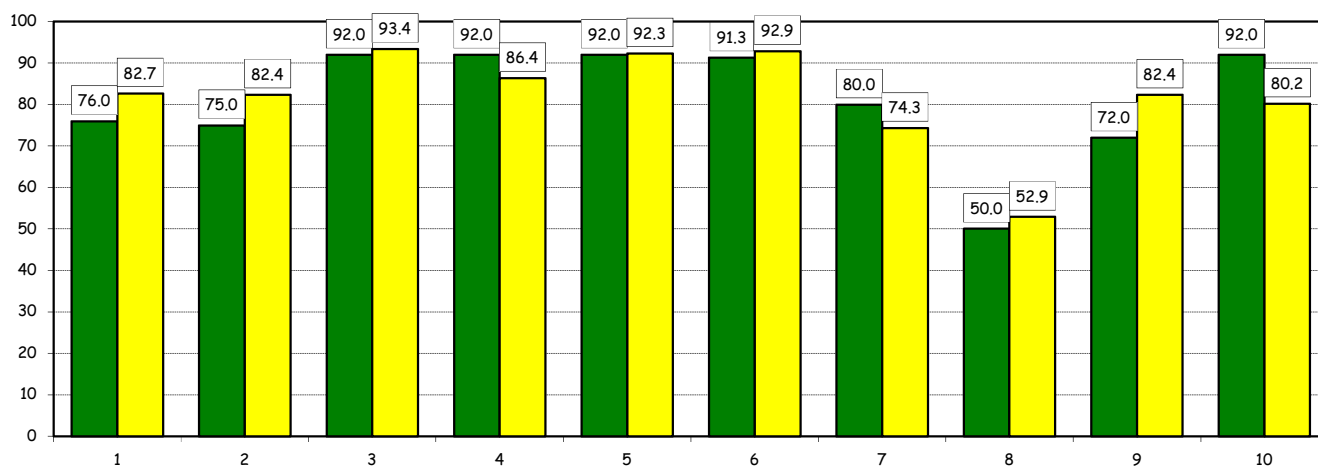
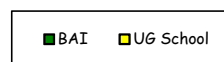


## Study experience

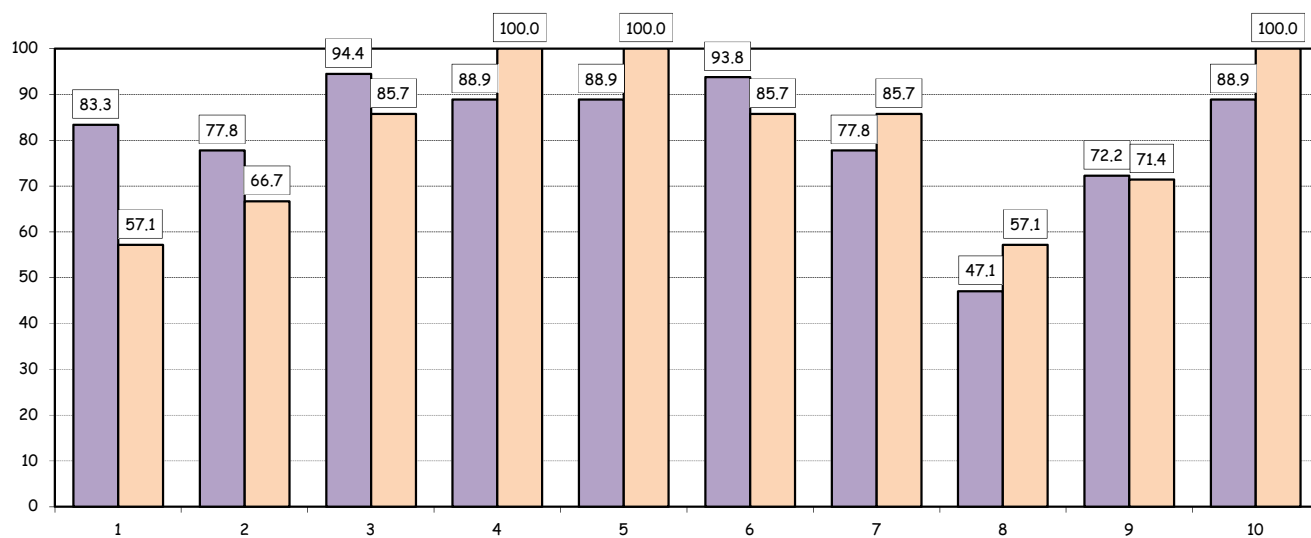
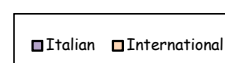
4) Do you think that your course of study at Bocconi has contributed to the development of the following skills?

Soft Skill	Item	Definitely YES		More YES than NO		More NO than YES		Definitely NO		Total		n.a.
		a.v.	%	a.v.	%	a.v.	%	a.v.	%	a.v.	%	
1	Ability to work on a team	6	24.0	13	52.0	4	16.0	2	8.0	25	100.0	1
2	Interpersonal skills	4	16.7	14	58.3	6	25.0	0	0.0	24	100.0	2
3	Organizational skills	12	48.0	11	44.0	2	8.0	0	0.0	25	100.0	1
4	Critical thinking skills	15	60.0	8	32.0	2	8.0	0	0.0	25	100.0	1
5	Ability to analyze and select information	18	72.0	5	20.0	2	8.0	0	0.0	25	100.0	1
6	Problem-solving ability	14	60.9	7	30.4	1	4.3	1	4.3	23	100.0	3
7	Written communication skills	10	40.0	10	40.0	4	16.0	1	4.0	25	100.0	1
8	Verbal communication skills	4	16.7	8	33.3	11	45.8	1	4.2	24	100.0	2
9	Ability to cope with stress	12	48.0	6	24.0	3	12.0	4	16.0	25	100.0	1
10	Computer Skills	17	68.0	6	24.0	1	4.0	1	4.0	25	100.0	1

Positive answers (%):  
comparison with the overall School data



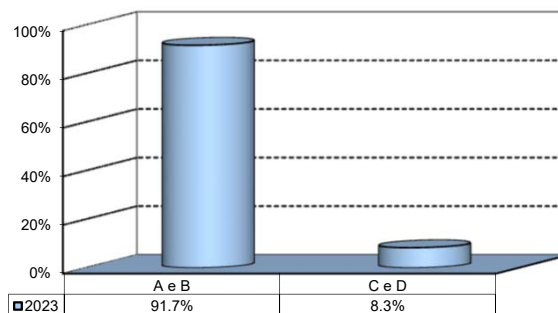
Positive answers (%):  
comparison based on School career options



## Infrastructure: Classrooms, Library And Facilities

1) What is your opinion about the classrooms where lessons and other teaching activities have been held?\*

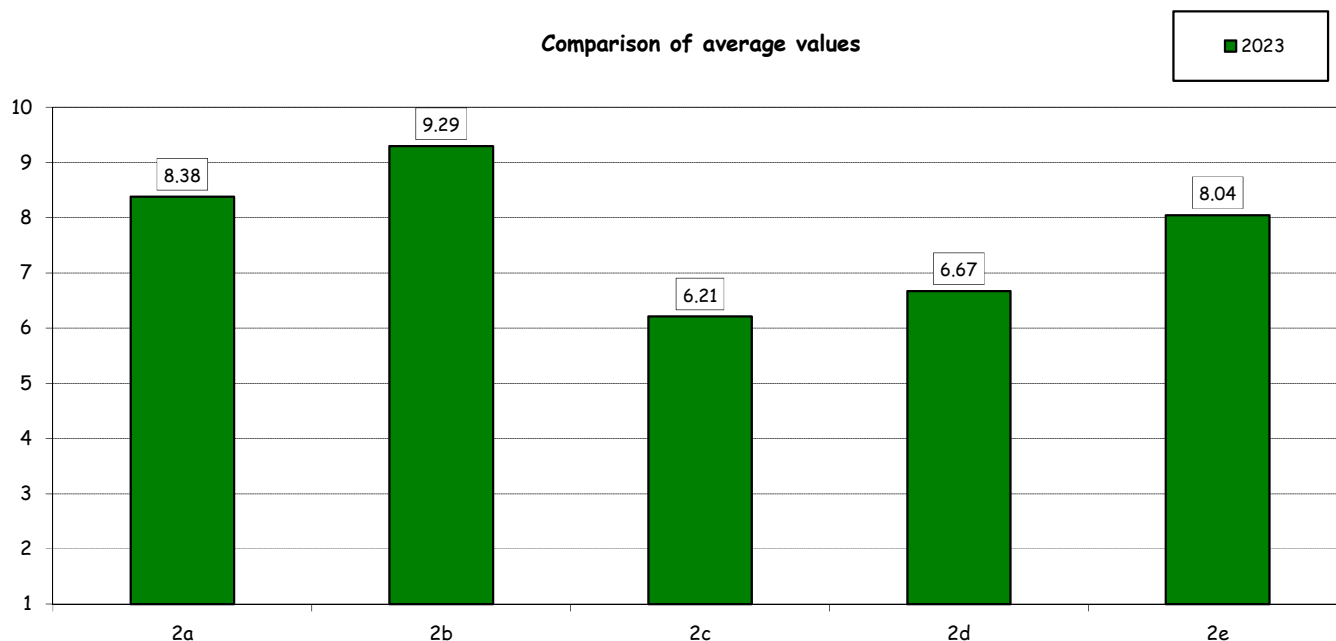
Answers	a.v.	%
A - Always or nearly always adequate	16	66.7%
B - Often adequate	6	25.0%
C - Rarely adequate	2	8.3%
D - Never adequate	0	0.0%
E - I did not use them	0	0.0%
<b>Total</b>	<b>24</b>	<b>100%</b>
NA	2	



2) How would you evaluate:

Item	Answers	Negative				Positive				Total		N.R.
		1-2		3-4-5		6-7-8		9-10		a.v.	%	
		a.v.	%	a.v.	%	a.v.	%	a.v.	%			
a) The adequacy of the audio and multimedia systems (e.g. instructor's computer, projectors, video players) installed in the classrooms		0	0.0	1	4.2	9	37.5	14	58.3	24	100.0	2
b) The cleanliness of classrooms and of other common areas on campus (corridors, halls, study rooms)		0	0.0	0	0.0	4	16.7	20	83.3	24	100.0	2
c) The adequacy of the amount of areas/seats reserved to individual study in the University Library		5	20.8	4	16.7	11	45.8	4	16.7	24	100.0	2
d) The adequacy of the amount of areas/seats reserved to individual study in other buildings on campus		3	12.5	4	16.7	11	45.8	6	25.0	24	100.0	2
e) The clarity and adequacy of the signage system on campus		0	0.0	2	8.3	10	41.7	12	50.0	24	100.0	2

Comparison of average values

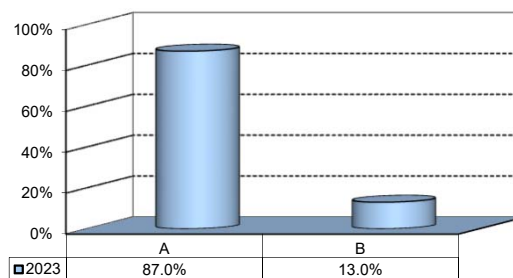


(\*): the percentage shown on the graphs is calculated by excluding the responses of those who declare that they have not used the service.

## Infrastructure: Classrooms, Library And Facilities

3) What is your overall opinion on the PC Labs and IT facilities provided by the University?\*

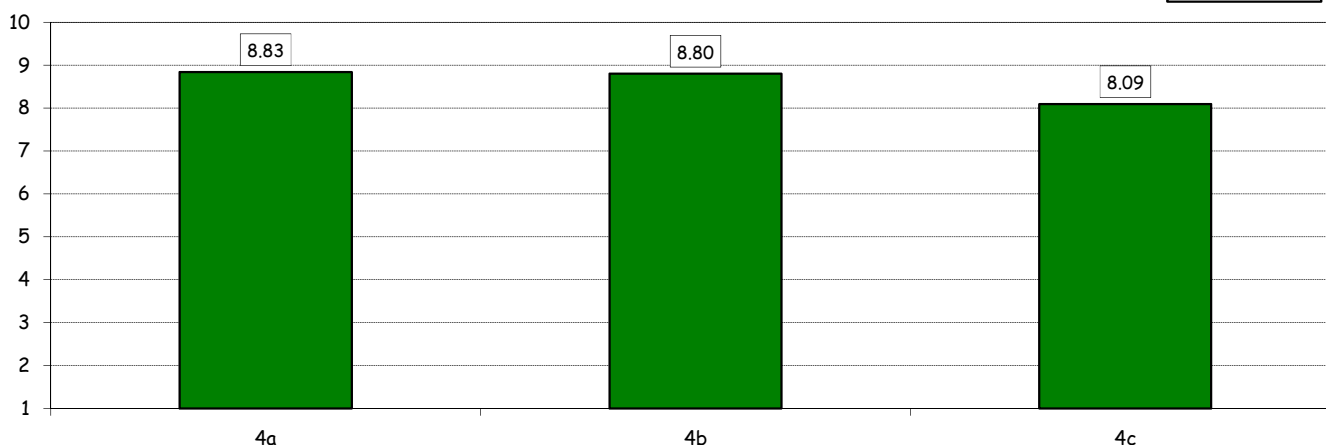
Answers	a.v.	%
A- Adequate in number	4	16.7%
B- Inadequate in number	3	12.5%
C- Never used	17	70.8%
<b>Total</b>	<b>24</b>	<b>100%</b>
NA	2	



4) How would you evaluate:

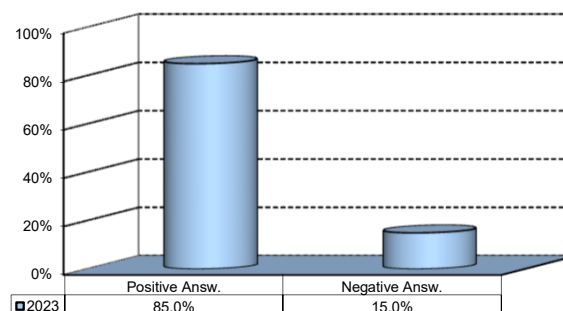
Item	Answers	Negative				Positive				Total		NA
		1-2		3-4-5		6-7-8		9-10		a.v.	%	
		a.v.	%	a.v.	%	a.v.	%	a.v.	%			
a) The availability of technical staff supporting students (Tutors) in PC Labs <sup>^</sup>		0	0.0	0	0.0	2	33.3	4	66.7	6	100.0	1
b) The convenience of the PC Labs' opening hours <sup>^</sup>		0	0.0	0	0.0	2	40.0	3	60.0	5	100.0	2
c) The level of accessibility and usability of the University's IT services (Internet access points, Punto Blu, Virtual Punto Blu, wireless connection)		0	0.0	1	4.3	14	60.9	8	34.8	23	100.0	3

Comparison of average values



5) What is your overall opinion on the Library's services, such as support for individual study?\*

Answers	a.v.	%
A - Very Positive	6	25.0%
B - Quite positive	11	45.8%
C - Quite negative	3	12.5%
D - Very Negative	0	0.0%
E - Never used	4	16.7%
<b>Total</b>	<b>24</b>	<b>100%</b>
NA	2	



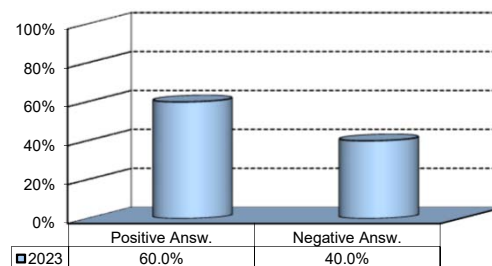
(<sup>^</sup>): Only in case of answer "A" or "B" to item no.3

(\*): the percentage shown on the graphs is calculated by excluding the responses of those who declare that they have not used the service.

## Study experience

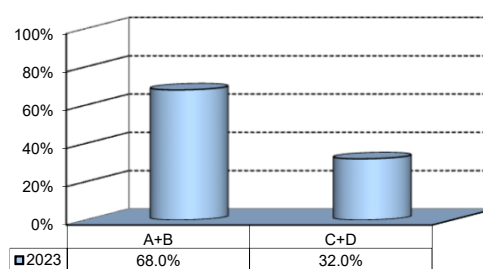
5) Do you think that the courses in your curriculum were adequately coordinated with each other?

	a. v.	%
A - Definitely YES	3	12.0%
B - More YES than NO	12	48.0%
C - More NO than YES	8	32.0%
D - Definitely NO	2	8.0%
<b>Total</b>	<b>25</b>	<b>100%</b>
NA	1	



6) Do you think that the overall study load was compatible with the length of the program?

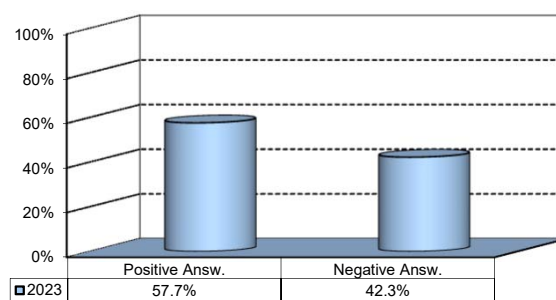
	a. v.	%
A - Definitely YES	3	12.0%
B - More YES than NO	14	56.0%
C - More NO than YES	6	24.0%
D - Definitely NO	2	8.0%
<b>Total</b>	<b>25</b>	<b>100%</b>
NA	1	



## Final Report

1) Do you think that the supervision and assistance for preparing for your final report (internship report, final paper or other) were adequate?

	a. v.	%
A - Definitely YES	11	42.3%
B - More YES than NO	4	15.4%
C - More NO than YES	10	38.5%
D - Definitely NO	1	3.8%
E - Supervision was not expected	0	0.0%
<b>Total</b>	<b>26</b>	<b>100%</b>
NA	0	

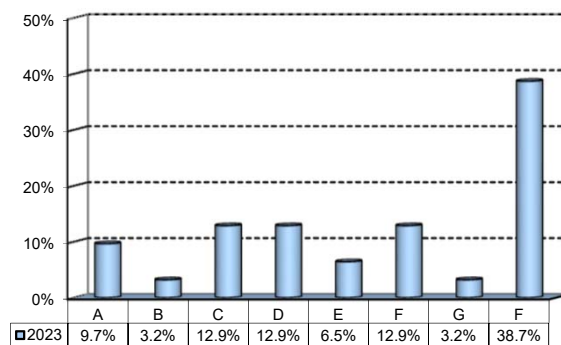


## Extracurricular Activities

1) Which of the following extracurricular activities did you attend during the Bachelor Program?

(multiple answers admitted)

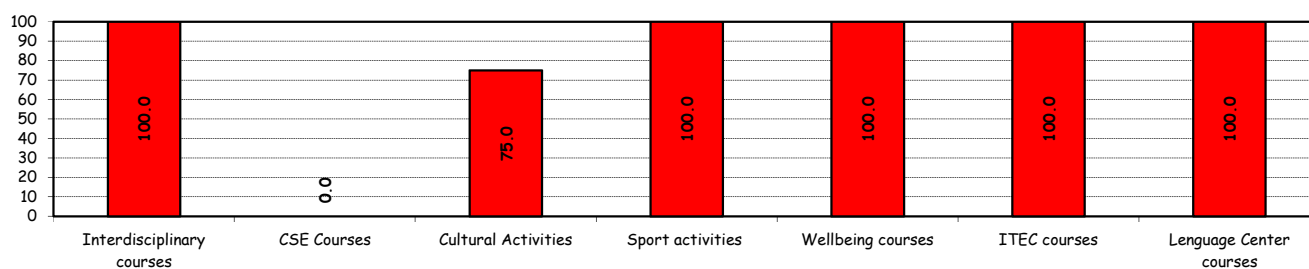
	a.v.	%
A - Interdisciplinary courses ("Sapere a tutto campo")	3	9.7%
B - Counseling and Self-Empowerment courses (CSE)	1	3.2%
C - Cultural Activities	4	12.9%
D - Sport activities	4	12.9%
E - Wellbeing courses	2	6.5%
F - IT Education Center courses (ITEC)	4	12.9%
G - Language Center courses	1	3.2%
H - None	12	38.7%
<b>Total</b>	<b>31</b>	<b>100%</b>
NA	0	



2) Do you think that the activities you took part in contributed to your cultural/educational enrichment?

	Definitely YES		More YES than NO		More NO than YES		Definitely NO		Total		NA
	a.v.	%	a.v.	%	a.v.	%	a.v.	%	a.v.	%	a.v.
A - Interdisciplinary courses	1	33.3	2	66.7	0	0.0	0	0.0	3	100.0	0
B - CSE courses	0	0.0	0	0.0	1	100.0	0	0.0	1	100.0	0
C - Cultural Activities	1	25.0	2	50.0	1	25.0	0	0.0	4	100.0	0
D - Sport activities	2	50.0	2	50.0	0	0.0	0	0.0	4	100.0	0
E - Wellbeing courses	1	50.0	1	50.0	0	0.0	0	0.0	2	100.0	0
F - ITEC courses	1	25.0	3	75.0	0	0.0	0	0.0	4	100.0	0
G - Language Center courses	1	100.0	0	0.0	0	0.0	0	0.0	1	100.0	0

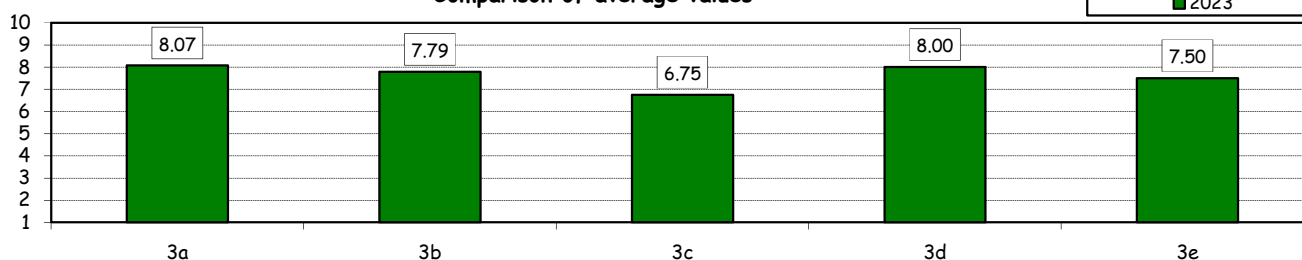
Positive answers (%)



How would you evaluate:

Item	Answers	Negative				Positive				Total		NA
		1-2		3-4-5		6-7-8		9-10		a.v.	%	a.v.
		a.v.	%	a.v.	%	a.v.	%	a.v.	%			
3a) The range of and interest in the programmes offered		0	0.0	1	7.1	7	50.0	6	42.9	14	100.0	0
3b) The support you received from the Campus Life Office		0	0.0	2	14.3	6	42.9	6	42.9	14	100.0	0
3c) The support you received from ITEC		0	0.0	2	50.0	0	0.0	2	50.0	4	100.0	0
3d) The support you received from Language Center		0	0.0	0	0.0	1	100.0	0	0.0	1	100.0	0
3e) The support you received from Bocconi Sport Teams		0	0.0	1	25.0	2	50.0	1	25.0	4	100.0	0

Comparison of average values

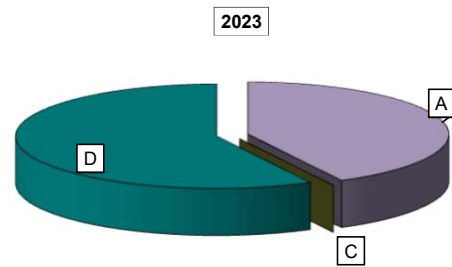




## Experience Of Studying Abroad

### 1) Type of experience:

Answers	%	
	a.v.	2023
A - Exchange Programme	11	42.3%
B - Double Degree	0	0.0%
C - Free-Mover	0	0.0%
D - None	15	57.7%
<b>Total</b>	<b>26</b>	<b>100%</b>
NA	0	

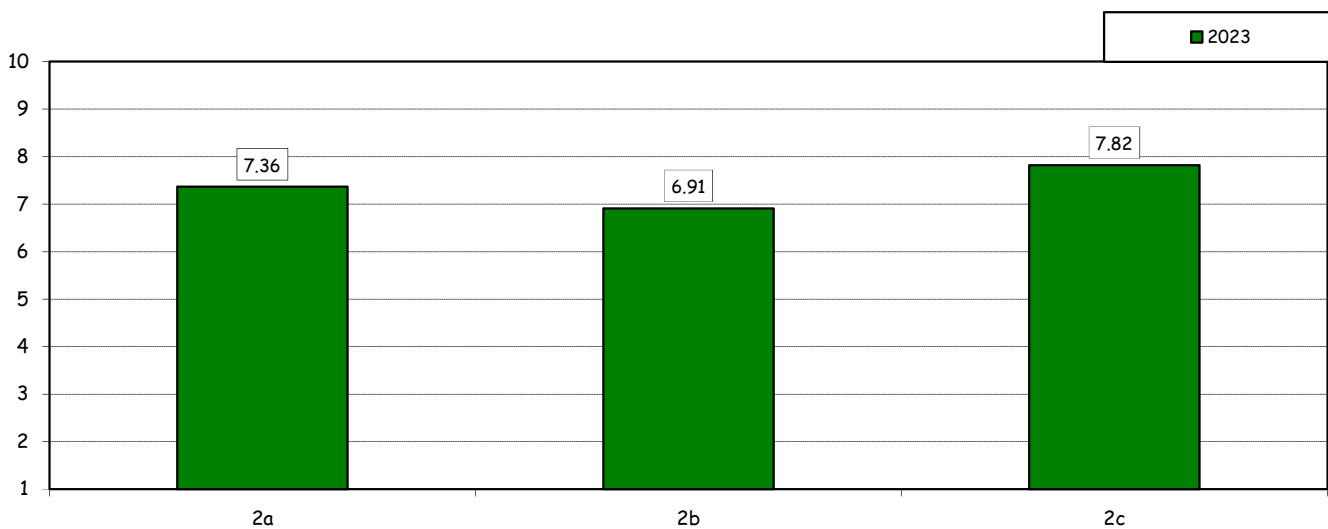


### How would you evaluate:

(only A or B answers to item no.1)

Item	Answers	Negative				Positive				Total		N.A. a.v.
		1-2		3-4-5		6-7-8		9-10		a.v.	%	
		a.v.	%	a.v.	%	a.v.	%	a.v.	%			
2a) Quality and completeness of information provided (emails, brochures, International Relations Service web page, meetings)		0	0.0	2	18.2	6	54.5	3	27.3	11	100.0	0
2b) The variety of programs offered.		0	0.0	2	18.2	7	63.6	2	18.2	11	100.0	0
2c) The support you received from Bocconi before, during and after the experience abroad.		0	0.0	2	18.2	4	36.4	5	45.5	11	100.0	0

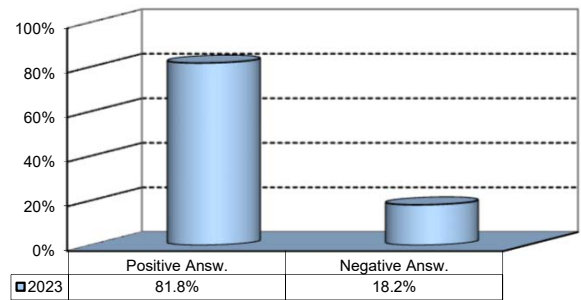
### Comparison of average values



## Experience Of Studying Abroad

3) Would you positively evaluate this experience?

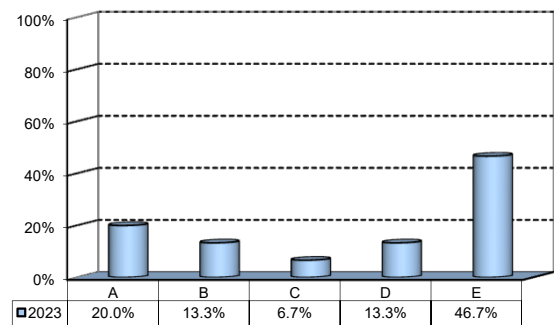
Answers	a.v.	%
A - Definitely YES	5	45.5%
B - More YES than NO	4	36.4%
C - More NO than YES	2	18.2%
D - Definitely NO	0	0.0%
<b>Total</b>	<b>11</b>	<b>100%</b>
NA	0	



(In case of answer "D" to item no.1)

4) Please indicate why you did not attend a period of study abroad (select all relevant reasons):

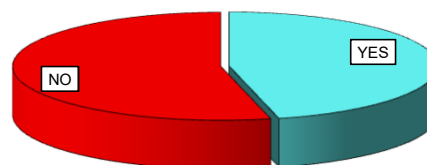
Answers	a.v.	%
A-Lack of interest in this kind of experience	3	20.0%
B-Absence of the requirements needed for participation in the program selected	2	13.3%
C-Rejection of your application	1	6.7%
D-Lack of time during the period of study	2	13.3%
E-Other (personal, family, organizational reasons, etc.)	7	46.7%
<b>Total</b>	<b>15</b>	<b>100%</b>
NA	0	



## Internship Activities

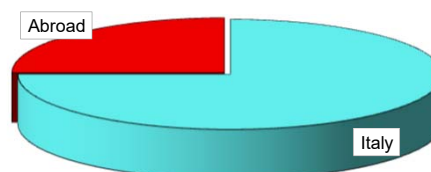
1) Did you attend an internship recognized by the Bachelor program?

	a.v.	2023
YES	12	46.2%
NO	14	53.8%
<b>Total</b>	<b>26</b>	<b>100%</b>
NA	0	



2) Where did you do the internship recognised by the Bachelor Program?

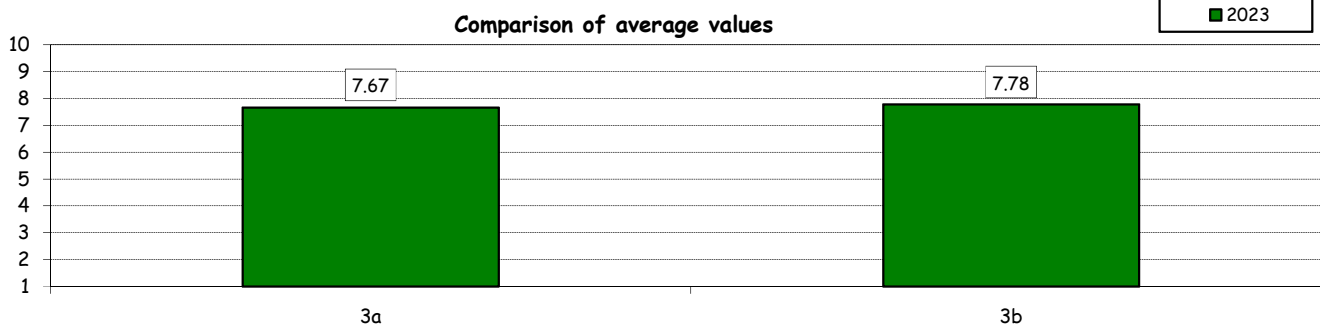
	a.v.	2023
Italy	9	75.0%
Abroad	3	25.0%
<b>Total</b>	<b>12</b>	<b>100%</b>
NA	0	



How would you evaluate:

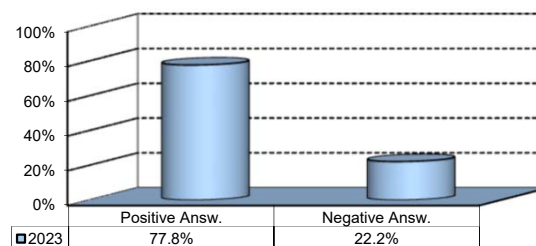
(In case of answer "A" to item no.2)

Item	Answers	Negative				Positive				Total		N.A. a.v.
		1-2		3-4-5		6-7-8		9-10		a.v.	%	
		a.v.	%	a.v.	%	a.v.	%	a.v.	%			
3a) The number and variety of opportunities offered		0	0.0	1	11.1	5	55.6	3	33.3	9	100.0	3
3b) The support you received from Bocconi		0	0.0	2	22.2	3	33.3	4	44.4	9	100.0	3



4) Would you positively evaluate this experience?

	a.v.	%
A - Definitely YES	2	22.2%
B - More YES than NO	5	55.6%
C - More NO than YES	2	22.2%
D - Definitely NO	0	0.0%
<b>Total</b>	<b>9</b>	<b>100%</b>
NA	3	

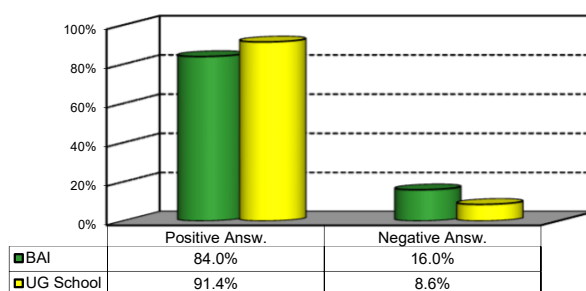


## General satisfaction and short-term plans

1) Are you satisfied overall with the study program you attended?

Answers	Italian School career		Int.nal School Career		Total	
	a.v.	%	a.v.	%	a.v.	%
A - Definitely YES	5	27.8%	0	0.0%	5	20.0%
B - More YES than NO	9	50.0%	7	100.0%	16	64.0%
C - More NO than YES	4	22.2%	0	0.0%	4	16.0%
D - Definitely NO	0	0.0%	0	0.0%	0	0.0%
<b>Total</b>	<b>18</b>	<b>100%</b>	<b>7</b>	<b>100%</b>	<b>25</b>	<b>100%</b>
NA	0		1		1	

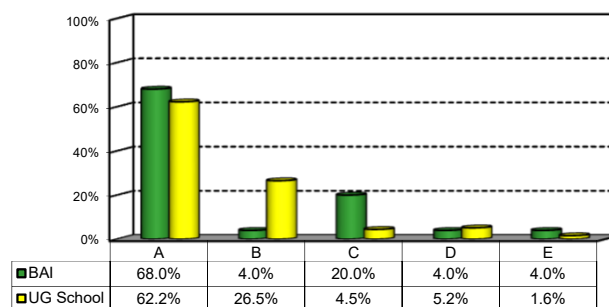
Comparison with the overall School data



2a) If you could go back in time, would you enroll in the University again?

Answers	Italian School career		Int.nal School Career		Total	
	a.v.	%	a.v.	%	a.v.	%
A - YES, in the same Program at this University	13	76.5%	4	50.0%	17	68.0%
B - YES, in another Program at this University	1	5.9%	0	0.0%	1	4.0%
C - YES, in the same Program but at another University	1	5.9%	4	50.0%	5	20.0%
D - YES, in another Program at another University	1	5.9%	0	0.0%	1	4.0%
E - NO, I would not enrol in university anymore	1	5.9%	0	0.0%	1	4.0%
<b>Total</b>	<b>17</b>	<b>100%</b>	<b>8</b>	<b>100%</b>	<b>25</b>	<b>100%</b>
NA	1		0		1	

Comparison with the overall School data



## General satisfaction and short-term plans

(In case of answer "B" to item no.2a)

### 2b) Which program would you enroll in at this University?

Answers	Total	
	v.a.	%
BEMACS	1	100.0%
BIEF	0	0.0%
BIEM	0	0.0%
BIG	0	0.0%
CLEACC	0	0.0%
CLEAM	0	0.0%
CLEF	0	0.0%
CLES-BESS	0	0.0%
CLMG	0	0.0%
WBB	0	0.0%
<b>Total</b>	<b>1</b>	<b>100%</b>
NA	0	

(In case of answer "B", "C", "D" or "E" to item no.2a)

### 2c) Why would you make a different choice?

Answers	Italian School career		Int.nal School Career		Total 2023	
	v.a.	%	v.a.	%	v.a.	%
A - My interest has changed over time / I discovered that I have different attitudes	2	50.0%	0	0.0%	2	25.0%
B - The Bachelor program did not satisfy my expectations	1	25.0%	1	25.0%	2	25.0%
C- I would have preferred to attend the same Bachelor program but taught in English	0	0.0%	0	0.0%	0	0.0%
F - Other reasons	1	25.0%	3	75.0%	4	50.0%
<b>Total</b>	<b>4</b>	<b>100%</b>	<b>4</b>	<b>100%</b>	<b>8</b>	<b>100%</b>
NA	0		0		0	

#### F- Other reasons:

Bocconi doesn't offer practical skills that are useful for the job search, at least for BAI program. Moreover, there is very little support on job opportunities as well

Essendo un corso nuovo, la carenza di materiale e informazioni ha reso piu' difficile il percorso, spesso non avevamo idea di cosa aspettarci da un esame, la struttura dei corsi e degli esami e' cambiata piu' volte in corso d'opera

Ho capito che avrei preferito frequentare un corso di laurea in informatica, che purtroppo la Bocconi non offre

I would have preferred studying abroad, where I did my exchange program.

## General satisfaction and short-term plans

### 3) In the near future do you intend to:

	Italian School career		Int.nal School Career		Total 2023	
	a.v.	%	a.v.	%	a.v.	%
A- To go on with university studies at Bocconi (Master of Science, one-year Master of Science)	12	70.6%	4	50.0%	16	64.0%
B-To go on with university studies at another Italian University	1	5.9%	1	12.5%	2	8.0%
C- To go on with university studies abroad	3	17.6%	2	25.0%	5	20.0%
D - To immediately look for a job	0	0.0%	1	12.5%	1	4.0%
E - To accept a job proposal received	1	5.9%	0	0.0%	1	4.0%
F - To continue to do the job started during this degree program	0	0.0%	0	0.0%	0	0.0%
<b>Total</b>	<b>17</b>	<b>100%</b>	<b>8</b>	<b>100%</b>	<b>25</b>	<b>100%</b>
NA	1		0		1	

### 4) If you intend to continue your university studies at another University (in Italy or abroad), what are the reasons for your choice? (multiple answers admitted)

	Italian School career		Int.nal School Career		Total 2023	
	a.v.	%	a.v.	%	a.v.	%
A - I would like to attend a more prestigious university	0	0.0%	1	16.7%	1	8.3%
B - I would like to build a strong international curriculum	2	33.3%	2	33.3%	4	33.3%
C- I can not bear the cost of studies (tuition fees and cost of living)	0	0.0%	0	0.0%	0	0.0%
D - I can not bear the cost of studies (tuition fees and cost of living)	3	50.0%	1	16.7%	4	33.3%
E- The administrative services are not sufficiently efficient	0	0.0%	0	0.0%	0	0.0%
F - I think that the contents of Bocconi's MSc programs do not differ much from those of undergraduate programs	0	0.0%	1	16.7%	1	8.3%
G - Other reasons	1	16.7%	1	16.7%	2	16.7%
<b>Total</b>	<b>6</b>	<b>100%</b>	<b>6</b>	<b>100%</b>	<b>12</b>	<b>100%</b>
NA	0		0		0	

#### G - Other reasons:

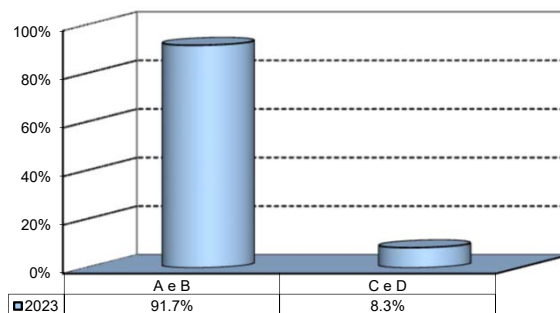
i dont like the master program

Il corso in triennale e' molto piu' matematico (classe di laurea L35), invece quello in magistrale sara' in informatica. Avrei continuato se avesse mantenuto un profilo piu' matematico.

## Infrastructure: Classrooms, Library And Facilities

1) What is your opinion about the classrooms where lessons and other teaching activities have been held?\*

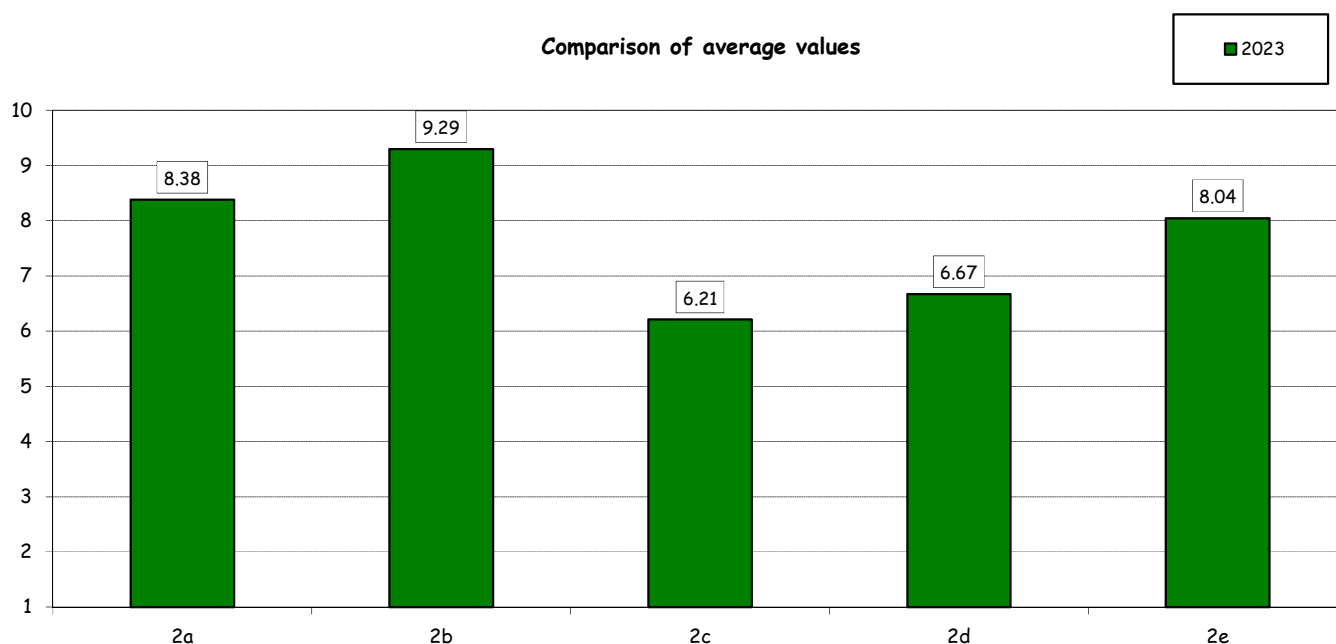
Answers	a.v.	%
A - Always or nearly always adequate	16	66.7%
B - Often adequate	6	25.0%
C - Rarely adequate	2	8.3%
D - Never adequate	0	0.0%
E - I did not use them	0	0.0%
<b>Total</b>	<b>24</b>	<b>100%</b>
NA	2	



2) How would you evaluate:

Item	Answers	Negative				Positive				Total		N.R.
		1-2		3-4-5		6-7-8		9-10		a.v.	%	
		a.v.	%	a.v.	%	a.v.	%	a.v.	%			
a) The adequacy of the audio and multimedia systems (e.g. instructor's computer, projectors, video players) installed in the classrooms		0	0.0	1	4.2	9	37.5	14	58.3	24	100.0	2
b) The cleanliness of classrooms and of other common areas on campus (corridors, halls, study rooms)		0	0.0	0	0.0	4	16.7	20	83.3	24	100.0	2
c) The adequacy of the amount of areas/seats reserved to individual study in the University Library		5	20.8	4	16.7	11	45.8	4	16.7	24	100.0	2
d) The adequacy of the amount of areas/seats reserved to individual study in other buildings on campus		3	12.5	4	16.7	11	45.8	6	25.0	24	100.0	2
e) The clarity and adequacy of the signage system on campus		0	0.0	2	8.3	10	41.7	12	50.0	24	100.0	2

Comparison of average values

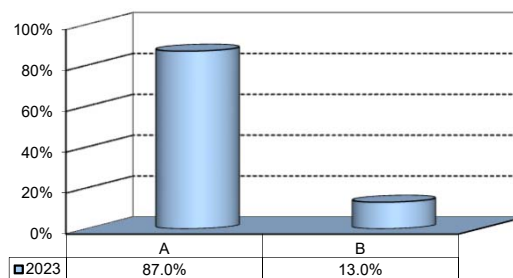


(\*): the percentage shown on the graphs is calculated by excluding the responses of those who declare that they have not used the service.

## Infrastructure: Classrooms, Library And Facilities

3) What is your overall opinion on the PC Labs and IT facilities provided by the University?\*

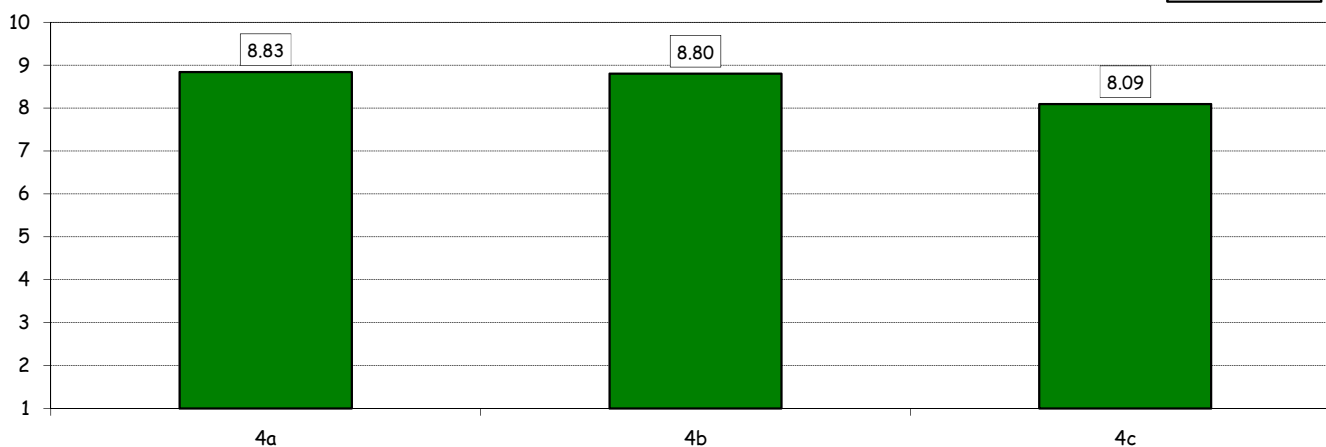
Answers	a.v.	%
A- Adequate in number	4	16.7%
B- Inadequate in number	3	12.5%
C- Never used	17	70.8%
<b>Total</b>	<b>24</b>	<b>100%</b>
NA	2	



4) How would you evaluate:

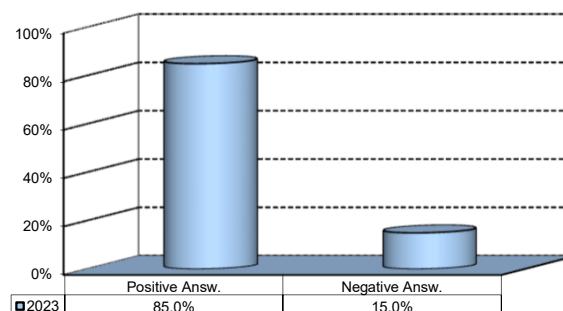
Item	Answers	Negative				Positive				Total		NA
		1-2		3-4-5		6-7-8		9-10		a.v.	%	
		a.v.	%	a.v.	%	a.v.	%	a.v.	%			
a) The availability of technical staff supporting students (Tutors) in PC Labs <sup>^</sup>		0	0.0	0	0.0	2	33.3	4	66.7	6	100.0	1
b) The convenience of the PC Labs' opening hours <sup>^</sup>		0	0.0	0	0.0	2	40.0	3	60.0	5	100.0	2
c) The level of accessibility and usability of the University's IT services (Internet access points, Punto Blu, Virtual Punto Blu, wireless connection)		0	0.0	1	4.3	14	60.9	8	34.8	23	100.0	3

Comparison of average values



5) What is your overall opinion on the Library's services, such as support for individual study?\*

Answers	a.v.	%
A - Very Positive	6	25.0%
B - Quite positive	11	45.8%
C - Quite negative	3	12.5%
D - Very Negative	0	0.0%
E - Never used	4	16.7%
<b>Total</b>	<b>24</b>	<b>100%</b>
NA	2	



(<sup>^</sup>): Only in case of answer "A" or "B" to item no.3

(\*): the percentage shown on the graphs is calculated by excluding the responses of those who declare that they have not used the service.