

## EVALUATION OF THE DEGREE PROGRAM AND THE UNIVERSITY EXPERIENCE

Graduate School  
2022-23 a.y.



## EVALUATION OF UNIVERSITY EXPERIENCE

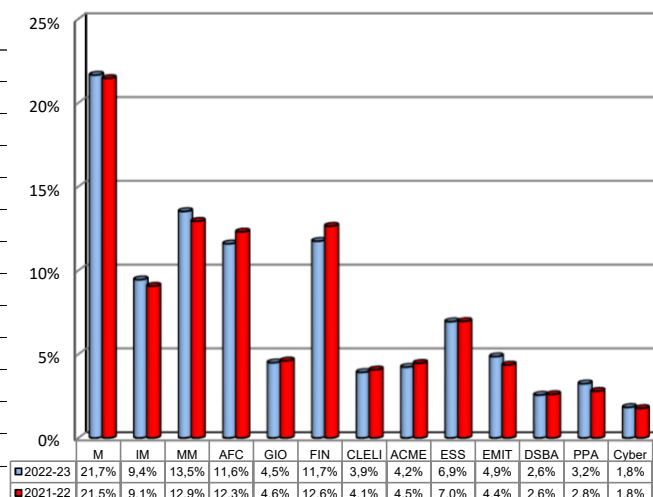
(Survey period: July 2023 - April 2024)

N° Questionnaires processed: 1.916

### General information

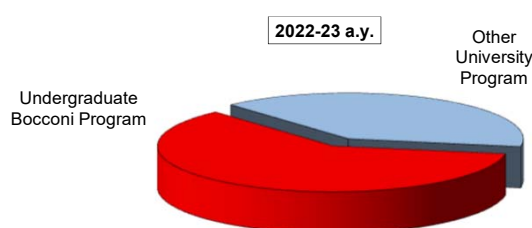
#### Degree Program

Answers	a.v.	%	% on graduates	
			2022-23	2021-22
M	415	21,7%	95,0%	96,5%
IM	181	9,4%	89,2%	93,9%
MM	259	13,5%	95,6%	97,1%
AFC	222	11,6%	94,1%	96,2%
GIO	86	4,5%	94,5%	98,9%
FIN	225	11,7%	92,6%	91,5%
CLELI	75	3,9%	98,7%	96,5%
ACME	81	4,2%	91,0%	96,8%
ESS	133	6,9%	93,0%	94,7%
EMIT	93	4,9%	93,0%	92,7%
DSBA	49	2,6%	90,7%	89,8%
PPA	62	3,2%	93,9%	89,1%
Cyber	35	1,8%	94,6%	94,7%
<b>Total</b>	<b>1916</b>	<b>100%</b>	<b>93,6%</b>	<b>95,0%</b>



#### Undergraduate Career

Answers	v.a.	%	
		2022-23	2021-22
Undergraduate Bocconi Program	1160	60,5%	61,0%
Other University Program	756	39,5%	39,0%
<b>Total</b>	<b>1916</b>	<b>100,0%</b>	<b>100,0%</b>



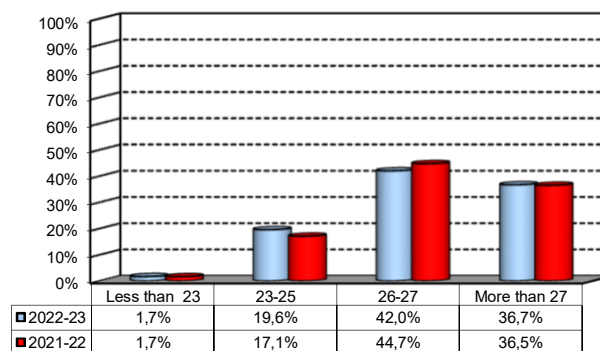
#### Nationality:

Answers	2022-23				2021-22			
	Italian		Non Italian		Italian		Non Italian	
	a.v.	%	a.v.	%	a.v.	%	a.v.	%
M	357	86,0%	58	14,0%	369	84,2%	69	15,8%
IM	120	66,3%	61	33,7%	110	59,5%	75	40,5%
MM	212	81,9%	47	18,1%	223	84,5%	41	15,5%
AFC	200	90,1%	22	9,9%	228	90,8%	23	9,2%
GIO	56	65,1%	30	34,9%	60	63,8%	34	36,2%
FIN	161	71,6%	64	28,4%	179	69,4%	79	30,6%
CLELI	75	100,0%	0	0,0%	83	100,0%	0	0,0%
ACME	45	55,6%	36	44,4%	65	71,4%	26	28,6%
ESS	88	66,2%	45	33,8%	109	76,8%	33	23,2%
EMIT	53	57,0%	40	43,0%	65	73,0%	24	27,0%
DSBA	35	71,4%	14	28,6%	37	69,8%	16	30,2%
PPA	45	72,6%	17	27,4%	47	82,5%	10	17,5%
Cyber	29	82,9%	6	17,1%	32	88,9%	4	11,1%
<b>Total</b>	<b>1476</b>	<b>77,0%</b>	<b>440</b>	<b>23,0%</b>	<b>1607</b>	<b>78,7%</b>	<b>434</b>	<b>21,3%</b>

## General information

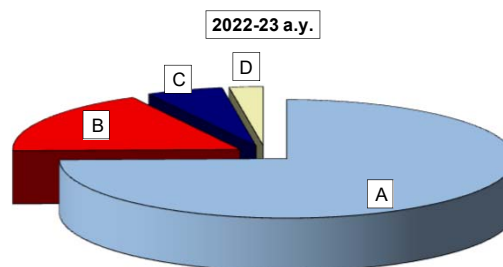
**Average mark of the exams passed:**  
(approximate average expressed in 30/30)

Answers	a.v.	%
Less than 23	33	1,7%
23-25	375	19,6%
26-27	805	42,0%
More than 27	703	36,7%
<b>Total</b>	<b>1916</b>	<b>100%</b>
NA	0	



**How many of the courses included in your curriculum did you attend regularly?**

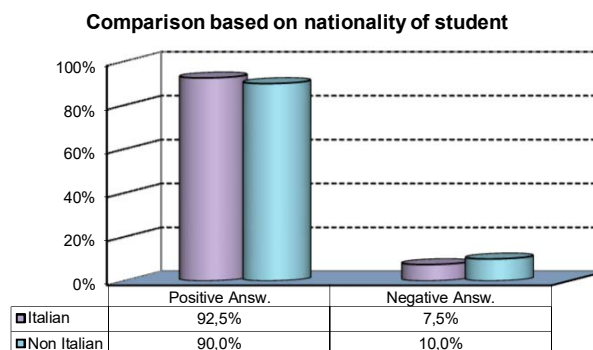
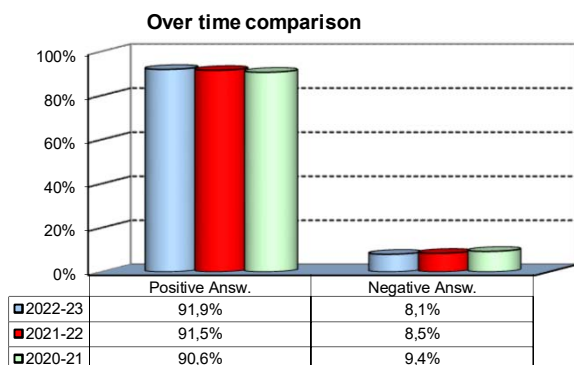
Answers	a.v.	%	
		2022-23	2021-22
A - More than 75%	1428	74,7%	75,2%
B - Between 50 and 75%	334	17,5%	17,8%
C - Between 25 and 50%	104	5,4%	4,4%
D - Less than 25%	46	2,4%	2,6%
<b>Total</b>	<b>1912</b>	<b>100,0%</b>	<b>100,0%</b>
NR	4		



## Study Experience

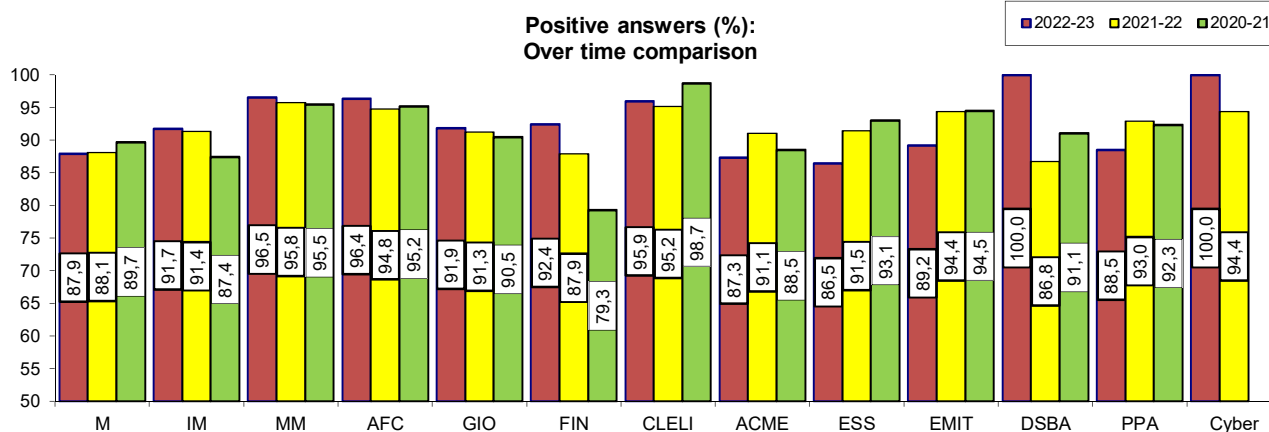
1) On the whole, do you think that the MSc program you attended at Bocconi enabled in-depth study of topics in both a theoretical and a practical sense?

Answers	Italian		Non Italian		Total	
	a.v.	%	a.v.	%	a.v.	%
A - Definitely YES	733	49,9%	184	42,0%	917	48,1%
B - More YES than NO	627	42,7%	210	47,9%	837	43,9%
C - More NO than YES	99	6,7%	39	8,9%	138	7,2%
D - Definitely NO	11	0,7%	5	1,1%	16	0,8%
<b>Total</b>	<b>1470</b>	<b>100%</b>	<b>438</b>	<b>100%</b>	<b>1908</b>	<b>100%</b>
NA	6		2		8	



### Breakdown of Responses by Degree Program

Degree Program	Answers		Definitely YES		More YES than NO		More NO than YES		Definitely NO		Total		NR
	a.v.	%	a.v.	%	a.v.	%	a.v.	%	a.v.	%	a.v.	%	a.v.
M	168	40,6	196	47,3	46	11,1	4	1,0	<b>414</b>	<b>100,0</b>	1		
IM	70	38,7	96	53,0	14	7,7	1	0,6	<b>181</b>	<b>100,0</b>	0		
MM	151	58,3	99	38,2	9	3,5	0	0,0	<b>259</b>	<b>100,0</b>	0		
AFC	134	60,9	78	35,5	7	3,2	1	0,5	<b>220</b>	<b>100,0</b>	2		
GIO	35	40,7	44	51,2	7	8,1	0	0,0	<b>86</b>	<b>100,0</b>	0		
FIN	117	52,2	90	40,2	16	7,1	1	0,4	<b>224</b>	<b>100,0</b>	1		
CLELI	43	58,1	28	37,8	3	4,1	0	0,0	<b>74</b>	<b>100,0</b>	1		
ACME	27	34,2	42	53,2	7	8,9	3	3,8	<b>79</b>	<b>100,0</b>	2		
ESS	71	53,4	44	33,1	15	11,3	3	2,3	<b>133</b>	<b>100,0</b>	0		
EMIT	37	39,8	46	49,5	9	9,7	1	1,1	<b>93</b>	<b>100,0</b>	0		
DSBA	26	53,1	23	46,9	0	0,0	0	0,0	<b>49</b>	<b>100,0</b>	0		
PPA	23	37,7	31	50,8	5	8,2	2	3,3	<b>61</b>	<b>100,0</b>	1		
Cyber	15	42,9	20	57,1	0	0,0	0	0,0	<b>35</b>	<b>100,0</b>	0		
<b>Total</b>	<b>917</b>	<b>48,1</b>	<b>837</b>	<b>43,9</b>	<b>138</b>	<b>7,2</b>	<b>16</b>	<b>0,8</b>	<b>1908</b>	<b>100,0</b>	<b>8</b>		

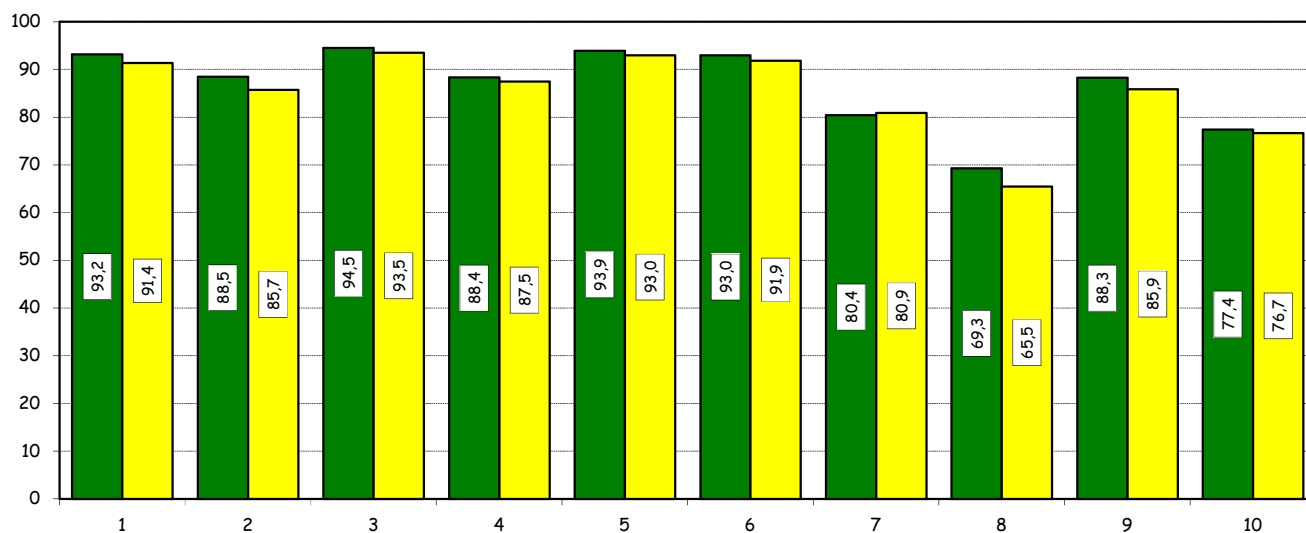
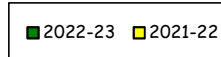


## Study Experience

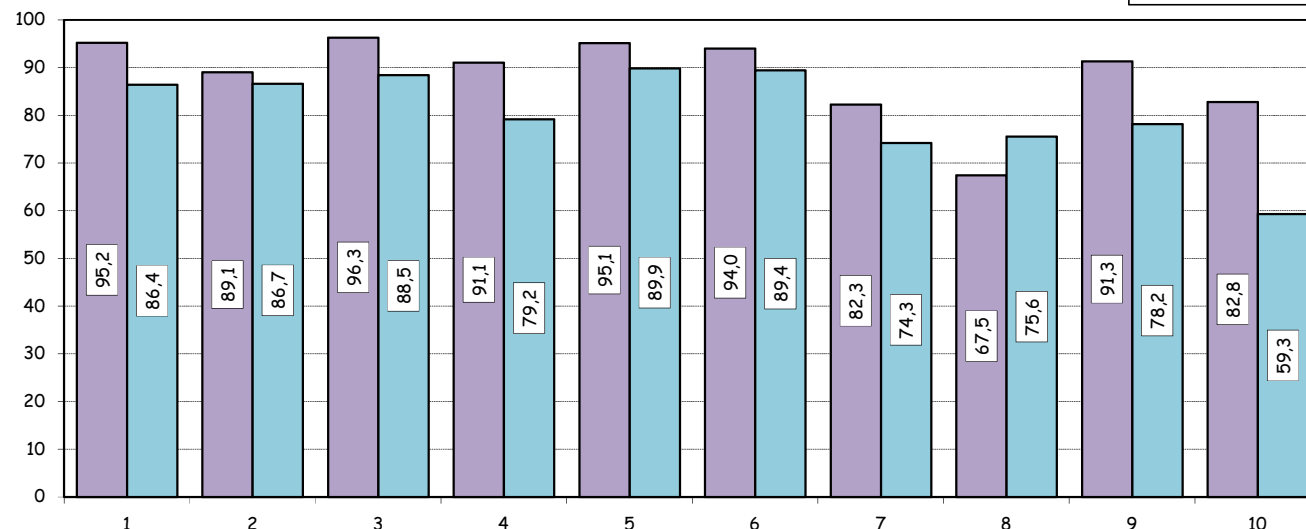
2) Do you think that your course of study at Bocconi has contributed to the development of the following skills?

Soft Skill	Answers	Definitely YES		More YES than NO		More NO than YES		Definitely NO		Total		NR
		a.v.	%	a.v.	%	a.v.	%	a.v.	%	a.v.	%	a.v.
1 Ability to work in team		1189	62,6	582	30,6	117	6,2	12	0,6	1900	100,0	16
2 Interpersonal skills		981	51,7	700	36,9	194	10,2	24	1,3	1899	100,0	17
3 Organizational skills		1191	62,9	599	31,6	91	4,8	13	0,7	1894	100,0	22
4 Critical thinking skills		926	49,0	743	39,3	183	9,7	37	2,0	1889	100,0	27
5 Ability to analyze and select information		1089	57,5	691	36,5	104	5,5	11	0,6	1895	100,0	21
6 Problem-solving ability		1016	53,6	745	39,3	124	6,5	9	0,5	1894	100,0	22
7 Written communication skills		723	38,1	802	42,3	325	17,1	46	2,4	1896	100,0	20
8 Verbal communication skills		569	30,1	742	39,2	464	24,5	116	6,1	1891	100,0	25
9 Ability to cope with stress		1103	58,1	574	30,2	154	8,1	68	3,6	1899	100,0	17
10 Entrepreneurial spirit		698	36,8	771	40,6	337	17,8	91	4,8	1897	100,0	19

**Positive answers (%):  
Over time comparison**



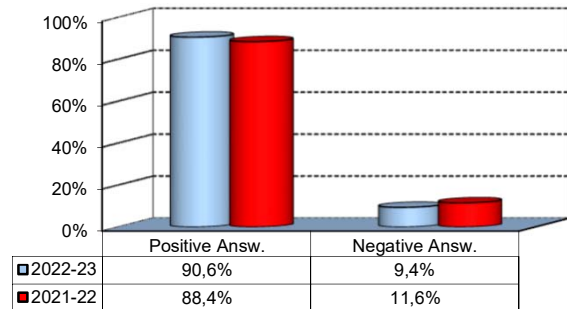
**Positive answers (%):  
comparison based on nationality of student**



## Study Experience

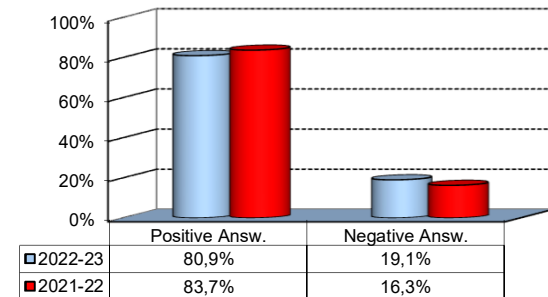
3) Do you think that teaching activities in the MSc program were structured in an active manner (frequent use of teamwork, case studies, assignments, etc.)?

Answers	a.v.	%
A - Definitely YES	925	48,7%
B - More YES than NO	794	41,8%
C - More NO than YES	157	8,3%
D - Definitely NO	22	1,2%
<b>Total</b>	<b>1898</b>	<b>100%</b>
NR	18	



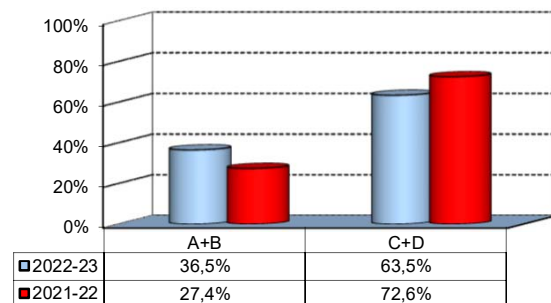
4) Do you think that the courses in your curriculum were adequately coordinated with each other?

Answers	a.v.	%
A - Definitely YES	576	30,3%
B - More YES than NO	962	50,6%
C - More NO than YES	314	16,5%
D - Definitely NO	48	2,5%
<b>Total</b>	<b>1900</b>	<b>100%</b>
NR	16	



5) During the MSc program, did you notice any unnecessary overlaps or repetitions of subjects and content with what you studied during your undergraduate program?

Answers	a.v.	%
A-Very often	145	12,6%
B-Often	276	24,0%
C-Hardly ever	560	48,6%
D-Never	171	14,8%
<b>Total</b>	<b>1152</b>	<b>100%</b>
NR	764	



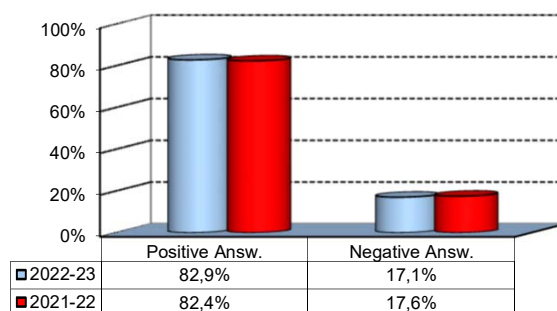
Please select the course or courses in the MSc program in which you encountered overlaps or unnecessary repetitions (multiple answers admitted)

Course	2022-23	
	a.v.	%
FINANCIAL MANAGEMENT E CORPORATE BANKING - FINANZA AZIENDALE	48	4,8%
MARKETING MANAGEMENT - ADVANCED - MARKETING	44	4,4%
BUSINESS HISTORY - STORIA ECONOMICA	41	4,1%
MANAGING ORGANIZATIONS - FONDAMENTI DI ORGANIZZAZIONE	27	2,7%
FINANZA AZIENDALE (Introduzione alle valutazioni) - FINANZA AZIENDALE	27	2,7%
DIRITTO COMMERCIALE (corso progredito) - DIRITTO COMMERCIALE	22	2,2%
MANAGEMENT OF CULTURAL INDUSTRIES AND INSTITUTIONS - MODULE II (COMPARATIVE CULTURAL PUBLIC POLICIES AND FUNDRAISING) - ECONOMIA DELLE AZIENDE PUBBLICHE E NON PROFIT	19	1,9%
FINANCIAL REPORTING AND ANALYSIS - BILANCIO	16	1,6%
MODELLI E SISTEMI DI PIANIFICAZIONE E CONTROLLO - PROGRAMMAZIONE E CONTROLLO	15	1,5%
LINGUA SPAGNOLA - SPAGNOLO (II LINGUA)	15	1,5%
GESTIONE DELLE RISORSE UMANE - FONDAMENTI DI ORGANIZZAZIONE	15	1,5%
Altro	714	71,2%
<b>TOTAL</b>	<b>1003</b>	<b>100,0%</b>

## Study Experience

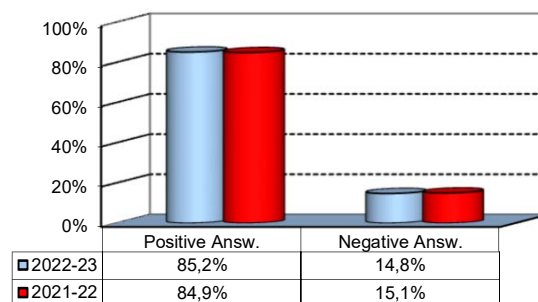
6) Do you think that the overall study load was compatible with the length of the program?

Answers	a.v.	%
A - Definitely YES	598	31,7%
B - More YES than NO	964	51,2%
C - More NO than YES	251	13,3%
D - Definitely NO	71	3,8%
<b>Total</b>	<b>1884</b>	<b>100%</b>
NR	32	



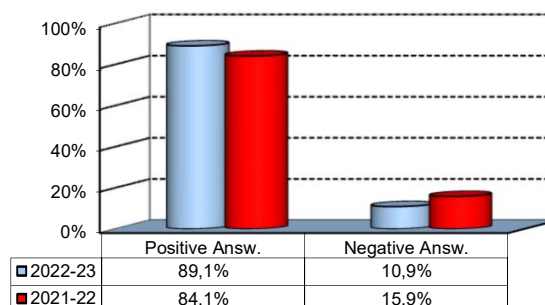
7) Was the coordination of the study program appropriately managed by the Program Director?

Answers	v.a.	%
A - Definitely YES	597	31,8%
B - More YES than NO	1002	53,4%
C - More NO than YES	232	12,4%
D - Definitely NO	46	2,5%
<b>Total</b>	<b>1877</b>	<b>100%</b>
NR	39	



8) On the whole, were the classroom climate and relationships with your classmates positive and able to enrich your personal experience?

Answers	a.v.	%
A - Definitely YES	912	48,4%
B - More YES than NO	767	40,7%
C - More NO than YES	177	9,4%
D - Definitely NO	29	1,5%
<b>Total</b>	<b>1885</b>	<b>100%</b>
NR	31	

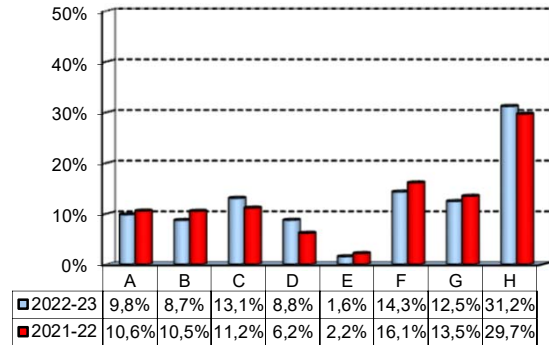


## Extracurricular Activities

1) Which of the following extracurricular activities did you attend during your study program?

(multiple answers admitted)

Answers	a.v.	%
A - Interdisciplinary courses ("Sapere a tutto campo")	264	9,8%
B - Counseling and Self-Empowerment courses CSE	234	8,7%
C - Cultural Activities (visit museums, concerts, theatre and cinema, various issues)	351	13,1%
D - Sport activities	235	8,8%
E - Wellbeing courses	42	1,6%
F - Courses offered by ITEC	384	14,3%
G - Courses offered by Language Center	334	12,5%
H - None	837	31,2%
<b>Total</b>	<b>2681</b>	<b>100%</b>
NA	0	



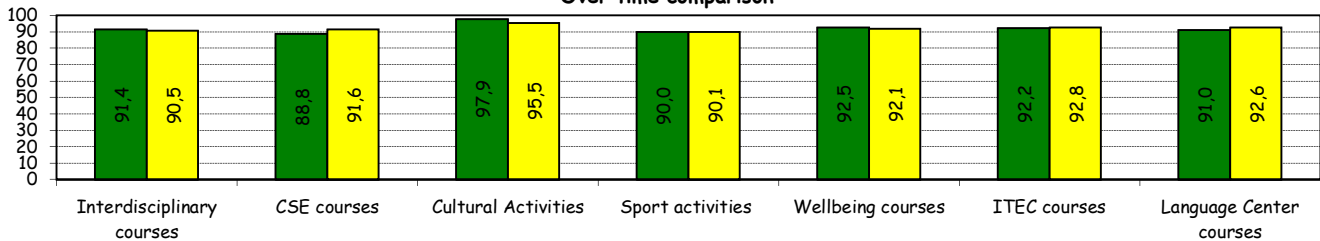
2) Do you think that the activities you took part in contributed to your cultural/educational enrichment?

Iniziativa	Risposte	Definitely YES		More YES than NO		More NO than YES		Definitely NO		Total		NR
		a.v.	%	a.v.	%	a.v.	%	a.v.	%	a.v.	%	a.v.
A - Interdisciplinary courses		125	48,8	109	42,6	18	7,0	4	1,6	256	100,0	8
B - CSE courses		107	46,1	99	42,7	22	9,5	4	1,7	232	100,0	2
C - Cultural Activities		194	57,2	138	40,7	7	2,1	0	0,0	339	100,0	12
D - Sport activities		118	51,3	89	38,7	18	7,8	5	2,2	230	100,0	5
E - Wellbeing courses		24	60,0	13	32,5	3	7,5	0	0,0	40	100,0	2
F - ITEC courses		192	51,9	149	40,3	27	7,3	2	0,5	370	100,0	14
G -Language Center courses		158	48,8	137	42,3	29	9,0	0	0,0	324	100,0	10

Positive answers (%):

Over time comparison

■ 2022-23 ■ 2021-22

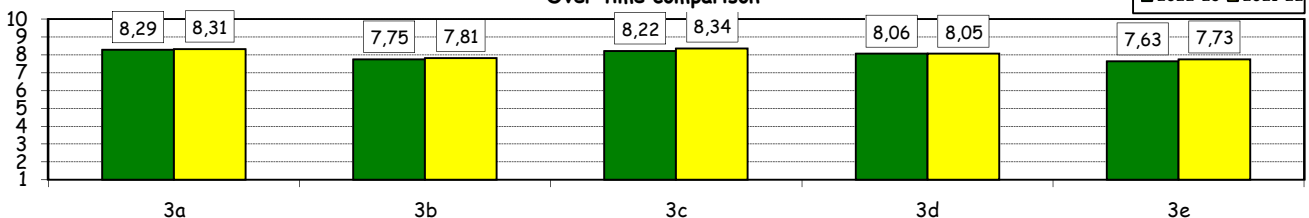


How would you evaluate:

Item	Answers	Negative				Positive				Total		NR
		1-2		3-4-5		6-7-8		9-10		a.v.	%	a.v.
		a.v.	%	a.v.	%	a.v.	%	a.v.	%	a.v.	%	a.v.
3a) The range and interest of programmes offered		4	0,4	30	2,8	562	53,0	464	43,8	1060	100,0	19
3b) The support you received from the Campus Life Office		15	1,4	98	9,4	563	53,8	370	35,4	1046	100,0	33
3c) The support you received from ITEC		1	0,3	17	4,5	181	48,4	175	46,8	374	100,0	10
3d) The support you received from Language Center		4	1,2	21	6,4	166	50,3	139	42,1	330	100,0	4
3e) The support you received from Bocconi Sport Team		6	2,6	32	13,9	106	45,9	87	37,7	231	100,0	4

Over time comparison

■ 2022-23 ■ 2021-22

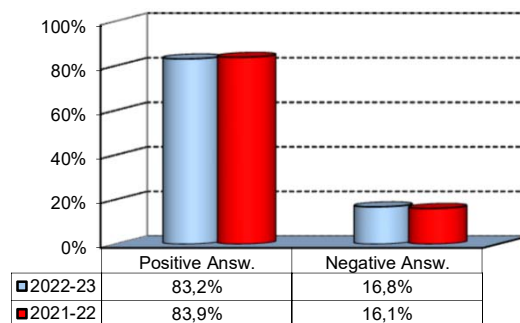




## Degree Thesis

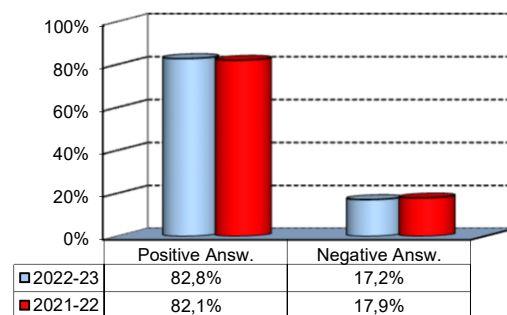
1) Do you think that the supervision and the assistance for preparing for your thesis were appropriate?

Answers	v. a.	%
A - Definitely YES	865	45,7%
B - More YES than NO	709	37,5%
C - More NO than YES	222	11,7%
D - Definitely NO	96	5,1%
<b>Total</b>	<b>1892</b>	<b>100%</b>
NR	24	



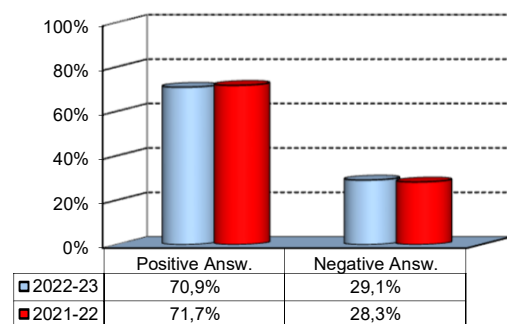
2) Do you think that the facilities provided by the University (library, computer labs) adequately supported preparation for your thesis?

Answers	v. a.	%
A - Definitely YES	706	37,5%
B - More YES than NO	854	45,4%
C - More NO than YES	258	13,7%
D - Definitely NO	65	3,5%
<b>Total</b>	<b>1883</b>	<b>100%</b>
NR	33	



3) Do you think that your thesis was a useful experience for completing your education and a way to verify your planning and writing skills?

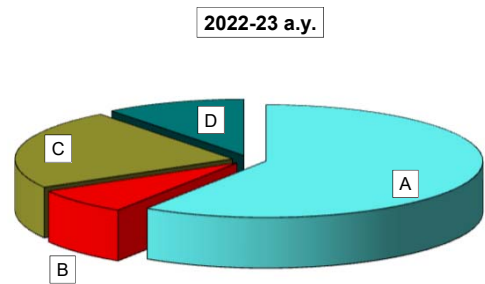
Answers	v. a.	%
A - Definitely YES	634	33,5%
B - More YES than NO	706	37,4%
C - More NO than YES	388	20,5%
D - Definitely NO	162	8,6%
<b>Total</b>	<b>1890</b>	<b>100%</b>
NR	26	



## Experience Of Studying Abroad

1) Please select the program you participated in:

Answers	a.v.	%	
		2022-23	2021-22
A - Exchange	438	23,0	16,8
B - CEMS-MIM	55	2,9	2,4
C- Double Degree	170	8,9	13,6
D - Free-Mover	77	4,0	2,4
E- None	1168	61,2	64,8
<b>Total</b>	<b>1908</b>	<b>100,0</b>	<b>100,0</b>
NA	8		

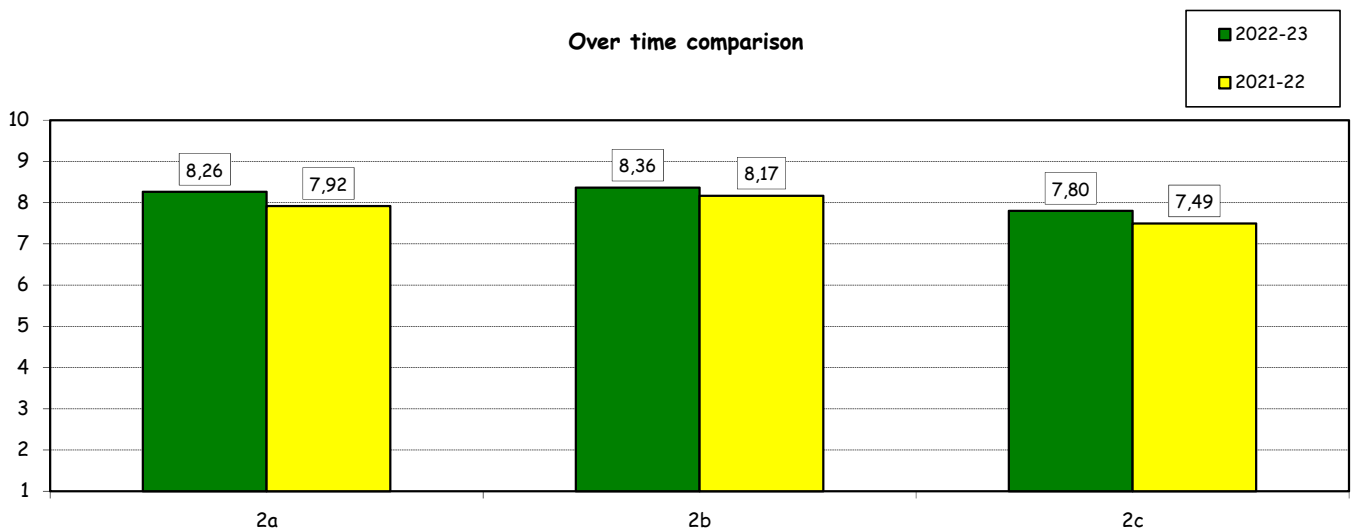


How would you evaluate:

(only A, B, C or E answers to item no.1)

Item	Answers	Negative				Positive				Total		N.A.
		1-2		3-4-5		6-7-8		9-10		a.v.	%	a.v.
		a.v.	%	a.v.	%	a.v.	%	a.v.	%	a.v.	%	a.v.
2a) Quality and completeness of information provided through: 'International Week', emails, brochures, International Relations Service web page.		7	1,1	38	5,8	281	42,8	331	50,4	657	100,0	6
2b) The range and interest of programs offered.		4	0,6	37	5,6	254	38,8	360	55,0	655	100,0	8
2c) The support you received from Bocconi International Relations.		25	3,9	65	10,0	271	41,8	287	44,3	648	100,0	15

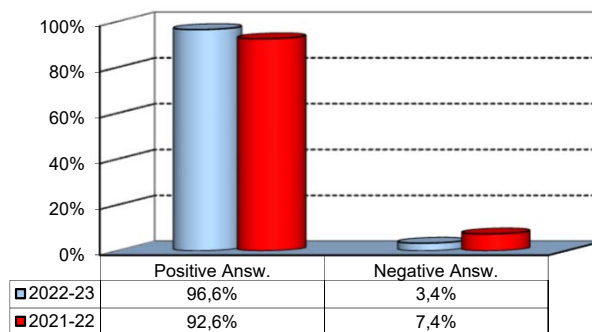
Over time comparison



## Experience Of Studying Abroad

3) Would you positively evaluate this experience?

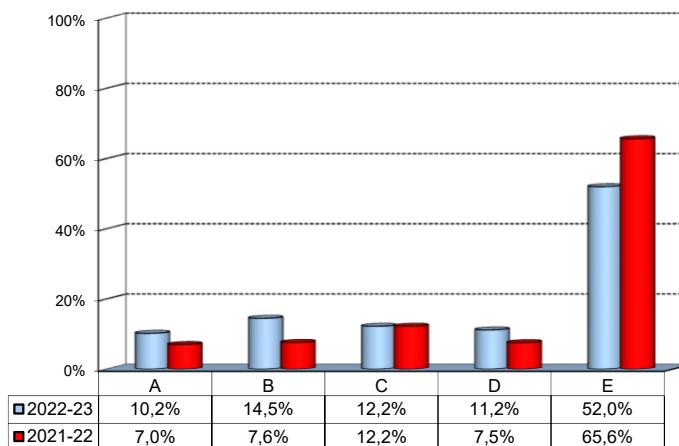
Answers	v.a.	%
A - Definitely YES	567	77,4%
B - More YES than NO	141	19,2%
C - More NO than YES	21	2,9%
D - Definitely NO	4	0,5%
<b>Total</b>	<b>733</b>	<b>100%</b>
NR	7	



(In case of answer "E" to item no.1)

4) Please indicate why you did not attend a period of study abroad (select all relevant reasons):

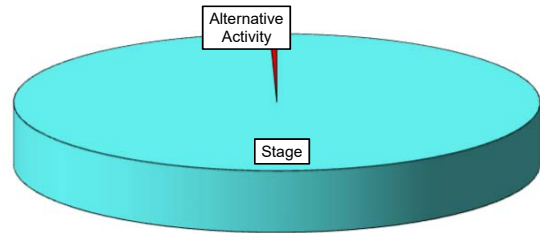
Answers	v.a.	%
A-Lack of interest in this kind of experience	117	10,2%
B-Absence of the requirements needed for participation in the program selected	166	14,5%
C-Rejection of your application	140	12,2%
D-Lack of time during the period of study	128	11,2%
E-Other (personal, family, organizational reasons, etc.)	596	52,0%
<b>Total</b>	<b>1147</b>	<b>100%</b>
NA	21	



## Internship Activities

1) Which activity recognized in your curriculum did you complete during the MSc program?

	a.v.	2023	2022
A - Internship/Other job experience	1908	99,6%	95,7%
B - Alternative Activity <sup>^</sup>	8	0,4%	4,3%
<b>Total</b>	<b>1916</b>	<b>100%</b>	<b>100%</b>
NA	0		



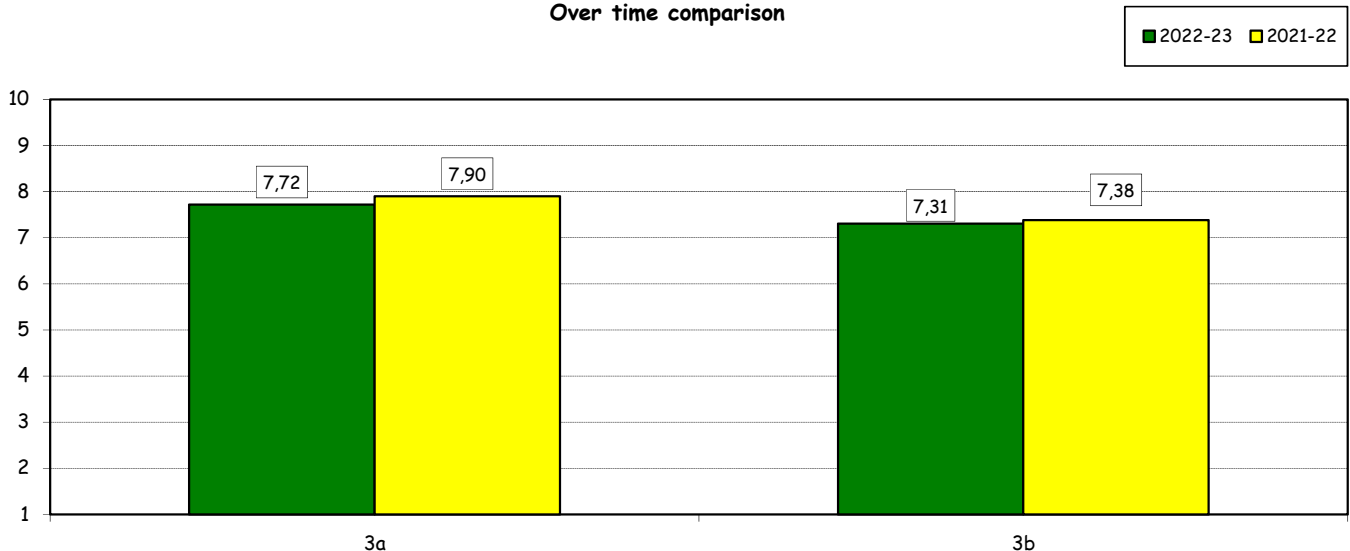
2) Where did you complete the internship recognized by the McS program?

Answers	a.v.	%	%
		2022-23	2021-22
In Italy	1295	67,9%	69,4%
Abroad	613	32,1%	30,6%
<b>Total</b>	<b>1908</b>	<b>100%</b>	<b>100%</b>
NA	0		

How would you evaluate:

Item	Answers	Negative				Positive				Total		N.A.
		1-2		3-4-5		6-7-8		9-10		a.v.	%	a.v.
		a.v.	%	a.v.	%	a.v.	%	a.v.	%	a.v.	%	a.v.
3a) The number and variety of opportunities offered.		41	2,5	168	10,3	789	48,4	631	38,7	1629	100,0	228
3b) The support you received from the Internship Office.		76	4,7	240	14,8	732	45,2	572	35,3	1620	100,0	236

Over time comparison

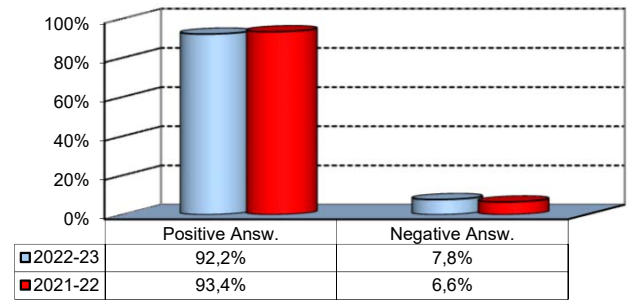


<sup>^</sup>: During the pandemic, students were given the opportunity to replace the mandatory internship with an alternative activity called Career Start Pack. It consists in an elective exam integrated with mandatory participation in the virtual career orientation path

## Internship Activities

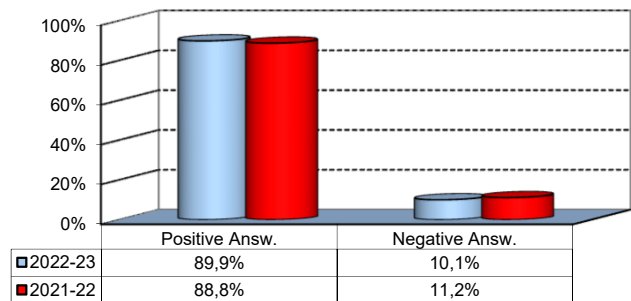
4) Would you positively evaluate this experience?

Answers	v.a.	%
A - Definitely YES	885	54,1%
B - More YES than NO	623	38,1%
C - More NO than YES	107	6,5%
D - Definitely NO	20	1,2%
<b>Total</b>	<b>1635</b>	<b>100%</b>
NR	222	



5) Do you think that the qualifications you acquired while attending the MSc program were appropriate to perform this activity?

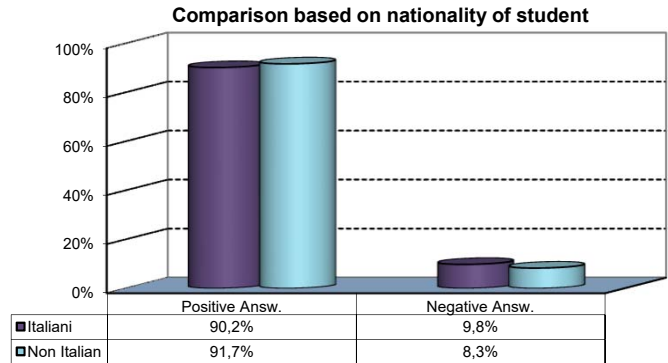
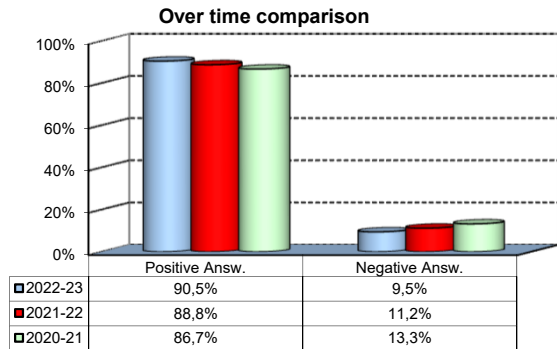
Answers	v.a.	%
A - Definitely YES	796	48,7%
B - More YES than NO	674	41,2%
C - More NO than YES	147	9,0%
D - Definitely NO	18	1,1%
<b>Total</b>	<b>1635</b>	<b>100%</b>
NR	222	



## General satisfaction and short-term plans

1) Are you satisfied overall with the study program you attended?

Answers	Italian		Non Italian		Total	
	a.v.	%	a.v.	%	a.v.	%
A - Definitely YES	652	44,9%	178	41,2%	830	44,0%
B - More YES than NO	658	45,3%	218	50,5%	876	46,5%
C - More NO than YES	121	8,3%	29	6,7%	150	8,0%
D - Definitely NO	22	1,5%	7	1,6%	29	1,5%
<b>Total</b>	<b>1453</b>	<b>100%</b>	<b>432</b>	<b>100%</b>	<b>1885</b>	<b>100%</b>
NA	23		8		31	

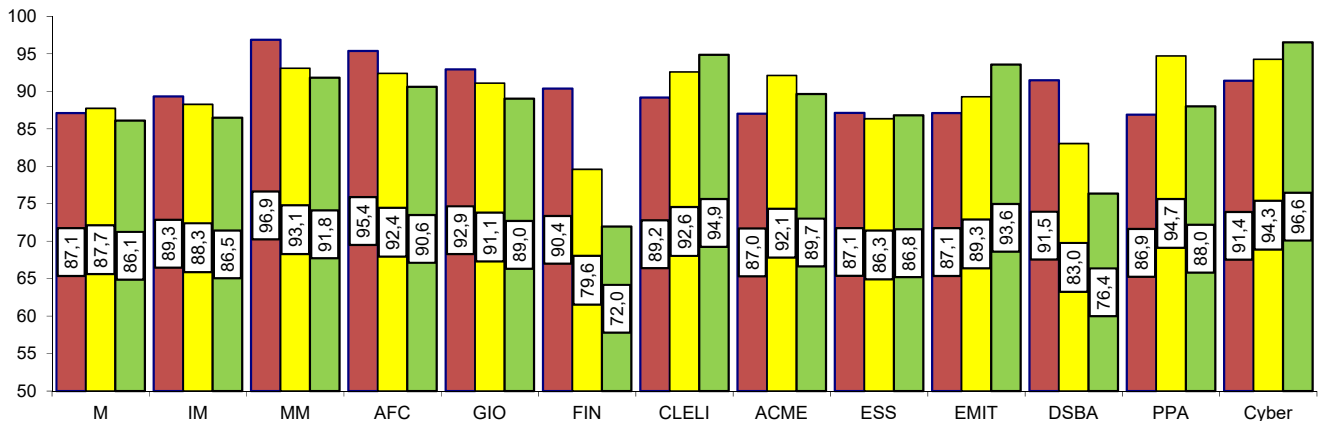


**Breakdown of Responses by Degree Program**

Degree Program	Answers		Definitely YES		More YES than NO		More NO than YES		Definitely NO		Total		NR
	a.v.	%	a.v.	%	a.v.	%	a.v.	%	a.v.	%	a.v.	%	a.v.
M	147	35,8	211	51,3	45	10,9	8	1,9	<b>411</b>	<b>100,0</b>	<b>4</b>		
IM	66	37,1	93	52,2	16	9,0	3	1,7	<b>178</b>	<b>100,0</b>	<b>3</b>		
MM	147	57,2	102	39,7	8	3,1	0	0,0	<b>257</b>	<b>100,0</b>	<b>2</b>		
AFC	108	49,8	99	45,6	9	4,1	1	0,5	<b>217</b>	<b>100,0</b>	<b>5</b>		
GIO	42	49,4	37	43,5	5	5,9	1	1,2	<b>85</b>	<b>100,0</b>	<b>1</b>		
FIN	93	42,7	104	47,7	18	8,3	3	1,4	<b>218</b>	<b>100,0</b>	<b>7</b>		
CLELI	37	50,0	29	39,2	6	8,1	2	2,7	<b>74</b>	<b>100,0</b>	<b>1</b>		
ACME	30	39,0	37	48,1	8	10,4	2	2,6	<b>77</b>	<b>100,0</b>	<b>4</b>		
ESS	57	43,2	58	43,9	11	8,3	6	4,5	<b>132</b>	<b>100,0</b>	<b>1</b>		
EMIT	43	46,2	38	40,9	11	11,8	1	1,1	<b>93</b>	<b>100,0</b>	<b>0</b>		
DSBA	23	48,9	20	42,6	4	8,5	0	0,0	<b>47</b>	<b>100,0</b>	<b>2</b>		
PPA	19	31,1	34	55,7	6	9,8	2	3,3	<b>61</b>	<b>100,0</b>	<b>1</b>		
Cyber	18	51,4	14	40,0	3	8,6	0	0,0	<b>35</b>	<b>100,0</b>	<b>0</b>		
<b>Total</b>	<b>830</b>	<b>44,0</b>	<b>876</b>	<b>46,5</b>	<b>150</b>	<b>8,0</b>	<b>29</b>	<b>1,5</b>	<b>1885</b>	<b>100,0</b>	<b>31</b>		

**Over time comparison**

■ 2022-23 ■ 2021-22 ■ 2020-21

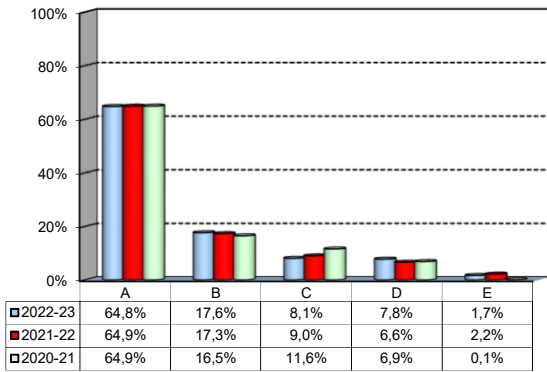


## General satisfaction and short-term plans

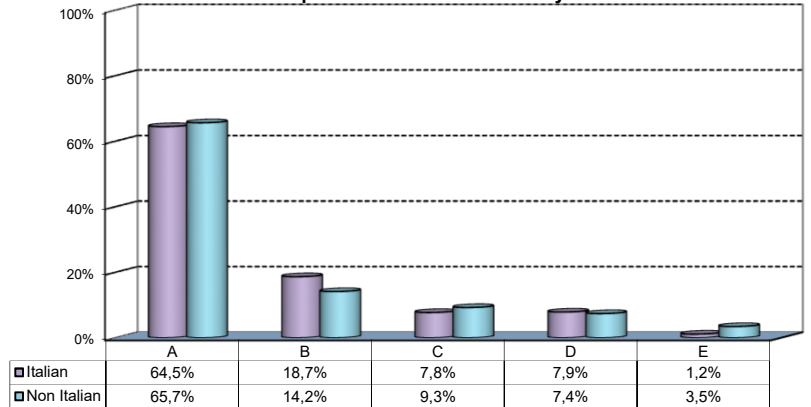
### 2a) If you could go back in time, would you enroll in the University again?

Answers	Italian		Non Italian		Total	
	a.v.	%	a.v.	%	a.v.	%
A-YES, in the same program at this University	939	64,5%	283	65,7%	1222	64,8%
B-YES, in another program at this University	272	18,7%	61	14,2%	333	17,6%
C-YES, in the same program but at another University	113	7,8%	40	9,3%	153	8,1%
D-YES, in another program at another University	115	7,9%	32	7,4%	147	7,8%
E-NO, I would not enrol in university anymore	17	1,2%	15	3,5%	32	1,7%
<b>Total</b>	<b>1456</b>	<b>100%</b>	<b>431</b>	<b>100%</b>	<b>1887</b>	<b>100%</b>
NR	20		9		29	

Over time comparison



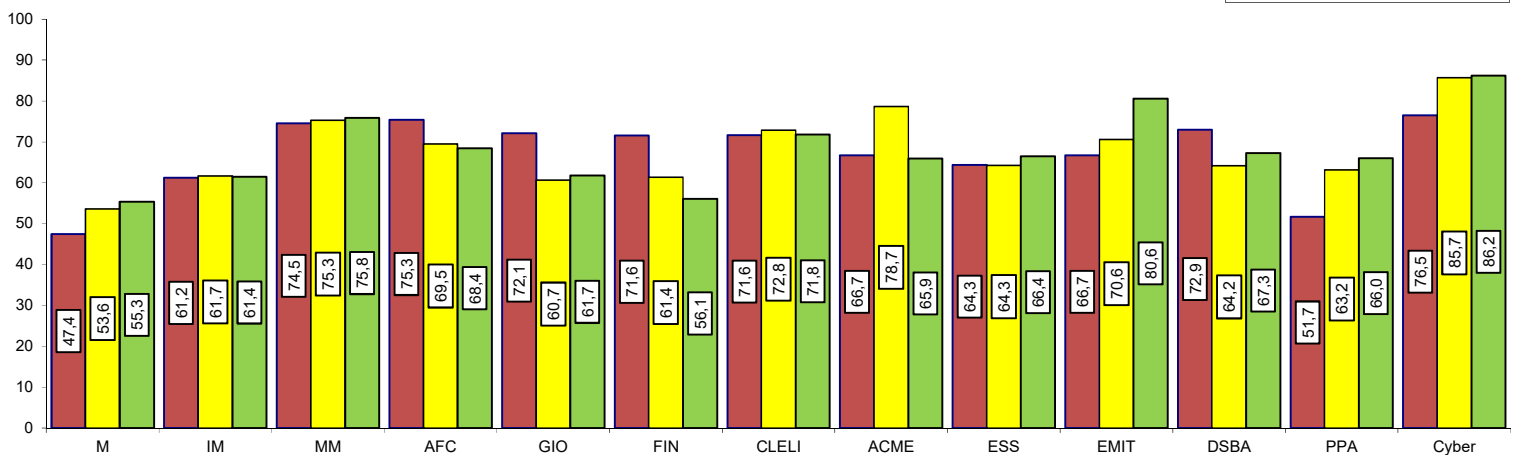
Comparison based on nationality of student



### Breakdown of Responses by Degree Program

Answers	A		B		C		D		E		Totale		NR
	a.v.	%	a.v.	%	a.v.	%	a.v.	%	a.v.	%	a.v.	%	
M	195	47,4	127	30,9	27	6,6	51	12,4	11	2,7	411	100,0	4
IM	109	61,2	21	11,8	31	17,4	15	8,4	2	1,1	178	100,0	3
MM	193	74,5	45	17,4	11	4,2	8	3,1	2	0,8	259	100,0	0
AFC	165	75,3	28	12,8	13	5,9	11	5,0	2	0,9	219	100,0	3
GIO	62	72,1	8	9,3	4	4,7	11	12,8	1	1,2	86	100,0	0
FIN	156	71,6	26	11,9	28	12,8	7	3,2	1	0,5	218	100,0	7
CLELI	53	71,6	9	12,2	1	1,4	9	12,2	2	2,7	74	100,0	1
ACME	52	66,7	10	12,8	6	7,7	8	10,3	2	2,6	78	100,0	3
ESS	83	64,3	14	10,9	15	11,6	13	10,1	4	3,1	129	100,0	4
EMIT	62	66,7	14	15,1	7	7,5	8	8,6	2	2,2	93	100,0	0
DSBA	35	72,9	9	18,8	4	8,3	0	0,0	0	0,0	48	100,0	1
PPA	31	51,7	19	31,7	4	6,7	5	8,3	1	1,7	60	100,0	2
Cyber	26	76,5	3	8,8	2	5,9	1	2,9	2	5,9	34	100,0	1
<b>Total</b>	<b>1222</b>	<b>64,8</b>	<b>333</b>	<b>17,6</b>	<b>153</b>	<b>8,1</b>	<b>147</b>	<b>7,8</b>	<b>32</b>	<b>1,7</b>	<b>1887</b>	<b>100,0</b>	<b>29</b>

Time comparison of answers: "YES, in the same programme at this University"  
Broken down by degree programme



## General satisfaction and short-term plans

Breakdown of responses by degree course and order of choice at the time of application

Answers		A		B		C		D		E		Totale		NR
		a.v.	%	a.v.	%	a.v.	%	a.v.	%	a.v.	%	a.v.	%	a.v.
<b>M</b>	1st choice	99	51,8	59	30,9	10	5,2	19	9,9	4	2,1	<b>191</b>	<b>100,0</b>	2
	2nd choice	63	49,2	34	26,6	10	7,8	15	11,7	6	4,7	<b>128</b>	<b>100,0</b>	0
	3rd choice	21	35,6	24	40,7	5	8,5	8	13,6	1	1,7	<b>59</b>	<b>100,0</b>	2
	4th choice	8	42,1	5	26,3	1	5,3	5	26,3	0	0,0	<b>19</b>	<b>100,0</b>	0
	5th choice	4	28,6	5	35,7	1	7,1	4	28,6	0	0,0	<b>14</b>	<b>100,0</b>	0
<b>IM</b>	1st choice	101	60,1	20	11,9	30	17,9	15	8,9	2	1,2	<b>168</b>	<b>100,0</b>	3
	2nd choice	4	80,0	0	0,0	1	20,0	0	0,0	0	0,0	<b>5</b>	<b>100,0</b>	0
	3rd choice	1	50,0	1	50,0	0	0,0	0	0,0	0	0,0	<b>2</b>	<b>100,0</b>	0
	4th choice	3	100,0	0	0,0	0	0,0	0	0,0	0	0,0	<b>3</b>	<b>100,0</b>	0
<b>MM</b>	1st choice	112	81,2	17	12,3	6	4,3	2	1,4	1	0,7	<b>138</b>	<b>100,0</b>	0
	2nd choice	44	72,1	11	18,0	2	3,3	3	4,9	1	1,6	<b>61</b>	<b>100,0</b>	0
	3rd choice	23	71,9	7	21,9	2	6,3	0	0,0	0	0,0	<b>32</b>	<b>100,0</b>	0
	4th choice	9	52,9	5	29,4	1	5,9	2	11,8	0	0,0	<b>17</b>	<b>100,0</b>	0
	5th choice	5	45,5	5	45,5	0	0,0	1	9,1	0	0,0	<b>11</b>	<b>100,0</b>	0
<b>AFC</b>	1st choice	92	81,4	11	9,7	4	3,5	4	3,5	2	1,8	<b>113</b>	<b>100,0</b>	2
	2nd choice	42	71,2	12	20,3	4	6,8	1	1,7	0	0,0	<b>59</b>	<b>100,0</b>	1
	3rd choice	19	65,5	2	6,9	4	13,8	4	13,8	0	0,0	<b>29</b>	<b>100,0</b>	0
	4th choice	11	64,7	3	17,6	1	5,9	2	11,8	0	0,0	<b>17</b>	<b>100,0</b>	0
	5th choice	1	100,0	0	0,0	0	0,0	0	0,0	0	0,0	<b>1</b>	<b>100,0</b>	0
<b>GIO</b>	1st choice	47	74,6	5	7,9	4	6,3	7	11,1	0	0,0	<b>63</b>	<b>100,0</b>	0
	2nd choice	10	83,3	0	0,0	0	0,0	2	16,7	0	0,0	<b>12</b>	<b>100,0</b>	0
	3rd choice	5	62,5	2	25,0	0	0,0	1	12,5	0	0,0	<b>8</b>	<b>100,0</b>	0
	4th choice	0	0,0	1	33,3	0	0,0	1	33,3	1	33,3	<b>3</b>	<b>100,0</b>	0
<b>FIN</b>	1st choice	130	75,6	17	9,9	19	11,0	5	2,9	1	0,6	<b>172</b>	<b>100,0</b>	7
	2nd choice	22	55,0	8	20,0	8	20,0	2	5,0	0	0,0	<b>40</b>	<b>100,0</b>	0
	3rd choice	4	66,7	1	16,7	1	16,7	0	0,0	0	0,0	<b>6</b>	<b>100,0</b>	0
<b>CLELI</b>	1st choice	33	80,5	3	7,3	0	0,0	4	9,8	1	2,4	<b>41</b>	<b>100,0</b>	1
	2nd choice	3	42,9	2	28,6	1	14,3	0	0,0	1	14,3	<b>7</b>	<b>100,0</b>	0
	3rd choice	8	66,7	2	16,7	0	0,0	2	16,7	0	0,0	<b>12</b>	<b>100,0</b>	0
	4th choice	5	62,5	1	12,5	0	0,0	2	25,0	0	0,0	<b>8</b>	<b>100,0</b>	0
	5th choice	4	66,7	1	16,7	0	0,0	1	16,7	0	0,0	<b>6</b>	<b>100,0</b>	0
<b>ACME</b>	1st choice	48	66,7	8	11,1	6	8,3	8	11,1	2	2,8	<b>72</b>	<b>100,0</b>	2
	2nd choice	2	50,0	2	50,0	0	0,0	0	0,0	0	0,0	<b>4</b>	<b>100,0</b>	1
	3rd choice	2	100,0	0	0,0	0	0,0	0	0,0	0	0,0	<b>2</b>	<b>100,0</b>	0
<b>ESS</b>	1st choice	76	65,0	11	9,4	14	12,0	13	11,1	3	2,6	<b>117</b>	<b>100,0</b>	3
	2nd choice	4	57,1	1	14,3	1	14,3	0	0,0	1	14,3	<b>7</b>	<b>100,0</b>	0
	3rd choice	2	66,7	1	33,3	0	0,0	0	0,0	0	0,0	<b>3</b>	<b>100,0</b>	1
	4th choice	1	100,0	0	0,0	0	0,0	0	0,0	0	0,0	<b>1</b>	<b>100,0</b>	0
	5th choice	0	0,0	1	100,0	0	0,0	0	0,0	0	0,0	<b>1</b>	<b>100,0</b>	0
<b>EMIT</b>	1st choice	50	65,8	13	17,1	6	7,9	5	6,6	2	2,6	<b>76</b>	<b>100,0</b>	0
	2nd choice	8	61,5	1	7,7	1	7,7	3	23,1	0	0,0	<b>13</b>	<b>100,0</b>	0
	3rd choice	4	100,0	0	0,0	0	0,0	0	0,0	0	0,0	<b>4</b>	<b>100,0</b>	0
<b>DSBA</b>	1st choice	29	70,7	8	19,5	4	9,8	0	0,0	0	0,0	<b>41</b>	<b>100,0</b>	1
	2nd choice	4	100,0	0	0,0	0	0,0	0	0,0	0	0,0	<b>4</b>	<b>100,0</b>	0
	3rd choice	2	100,0	0	0,0	0	0,0	0	0,0	0	0,0	<b>2</b>	<b>100,0</b>	0
	4th choice	0	0,0	1	100,0	0	0,0	0	0,0	0	0,0	<b>1</b>	<b>100,0</b>	0
<b>PPA</b>	1st choice	23	50,0	13	28,3	4	8,7	5	10,9	1	2,2	<b>46</b>	<b>100,0</b>	1
	2nd choice	5	62,5	3	37,5	0	0,0	0	0,0	0	0,0	<b>8</b>	<b>100,0</b>	1
	3rd choice	3	60,0	2	40,0	0	0,0	0	0,0	0	0,0	<b>5</b>	<b>100,0</b>	0
	5th choice	0	0,0	1	100,0	0	0,0	0	0,0	0	0,0	<b>1</b>	<b>100,0</b>	0
<b>CYBER</b>	1st choice	22	81,5	2	7,4	2	7,4	1	3,7	0	0,0	<b>27</b>	<b>100,0</b>	0
	2nd choice	2	50,0	1	25,0	0	0,0	0	0,0	1	25,0	<b>4</b>	<b>100,0</b>	1
	3rd choice	1	50,0	0	0,0	0	0,0	0	0,0	1	50,0	<b>2</b>	<b>100,0</b>	0
	4th choice	1	100,0	0	0,0	0	0,0	0	0,0	0	0,0	<b>1</b>	<b>100,0</b>	0
<b>Total</b>		<b>1222</b>	<b>64,8</b>	<b>333</b>	<b>17,6</b>	<b>153</b>	<b>8,1</b>	<b>147</b>	<b>7,8</b>	<b>32</b>	<b>1,7</b>	<b>1887</b>	<b>100,0</b>	<b>29</b>



## General satisfaction and short-term plans

(In case of answer "B" to item no.2b)

2b) Which program would you enroll at this University?

Asw. Degree	ACME		AFC		FIN		CLELI		ESS		EMIT		GIO		IM		M		MM		CYBER		Totale		NR
	a.v.	%	a.v.	%	a.v.	%	a.v.	%	a.v.	%	a.v.	%	a.v.	%	a.v.	%	a.v.	%	a.v.	%	a.v.	%	a.v.	%	a.v.
M	2	1,8	21	18,8	21	18,8	0	0,0	2	1,8	20	17,9	1	0,9	33	29,5	0	0,0	9	8,0	3	2,7	112	100,0	15
IM	1	6,3	5	31,3	6	37,5	0	0,0	1	6,3	1	6,3	0	0,0	0	0	1	6,3	0	0,0	1	6,3	16	100,0	5
MM	5	13,2	2	5,3	4	10,5	0	0,0	3	7,9	5	13,2	2	5,3	7	18,4	9	23,7	0	0,0	1	2,6	38	100,0	7
AFC	0	0,0	0	0,0	11	55,0	0	0,0	0	0,0	1	5,0	0	0,0	4	20,0	3	15,0	1	5,0	0	0,0	20	100,0	8
GIO	0	0,0	1	14,3	2	28,6	0	0,0	3	42,9	1	14,3	0	0,0	0	0,0	0	0,0	0	0,0	0	0,0	7	100,0	1
FIN	0	0,0	11	44,0	0	0,0	0	0,0	3	12,0	2	8,0	1	4,0	7	28,0	0	0,0	0	0,0	1	4,0	25	100,0	1
CLELI	1	11,1	4	44,4	2	22,2	0	0,0	0	0,0	2	22,2	0	0,0	0	0,0	0	0,0	0	0,0	0	0,0	9	100,0	0
ACME	0	0,0	0	0,0	0	0,0	0	0,0	1	10,0	1	10,0	0	0,0	3	30,0	2	20,0	3	30,0	0	0,0	10	100,0	0
ESS	1	8,3	3	25,0	3	25,0	1	8,3	0	0,0	0	0,0	1	8,3	3	25,0	0	0,0	0	0,0	0	0,0	12	100,0	2
EMIT	1	0,0	2	18,2	2	18,2	0	0,0	4	36,4	0	0,0	0	0,0	2	18,2	0	0,0	0	0,0	0	0,0	11	90,9	3
DSBA	0	0,0	0	0,0	5	62,5	0	0,0	1	12,5	1	0,0	0	0,0	0	0,0	0	0,0	1	12,5	0	0,0	8	87,5	1
PPA	0	0,0	0	0,0	1	5,3	0	0,0	9	47,4	1	0,0	5	26,3	2	10,5	1	5,3	0	0,0	0	0,0	19	94,7	0
Cyber	0	0,0	0	0,0	0	0,0	0	0,0	0	0,0	2	100,0	0	0,0	0	0,0	0	0,0	0	0,0	0	0,0	2	100,0	1
<b>Total</b>	<b>11</b>	<b>3,8</b>	<b>49</b>	<b>17,0</b>	<b>57</b>	<b>19,7</b>	<b>1</b>	<b>0,3</b>	<b>27</b>	<b>9,3</b>	<b>37</b>	<b>12,8</b>	<b>10</b>	<b>3,5</b>	<b>61</b>	<b>21,1</b>	<b>16</b>	<b>5,5</b>	<b>14</b>	<b>4,8</b>	<b>6</b>	<b>13,6</b>	<b>289</b>	<b>97,9</b>	<b>44</b>

(In case of answer "B", "C", "D" or "E" to item no.2a)

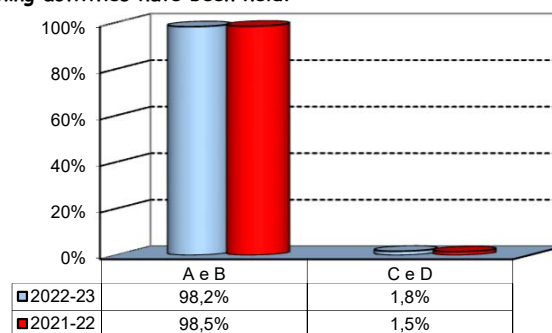
2c) Why would you make a different choice?

Answers				
	a.v.	% 2022-23	% 2021-22	% 2020-21
A - My interest has changed over time / I discovered that I have different attitudes	276	43,3%	40,7%	24,9%
B -The MS program did not satisfy my expectations	145	22,7%	27,8%	31,4%
C I would have preferred to attend the same MS program but taught in English	55	8,6%	6,9%	5,2%
D - Other reasons	162	25,4%	24,6%	38,5%
<b>Total</b>	<b>638</b>	<b>100%</b>	<b>100,0%</b>	<b>100,0%</b>
NA	27			

## Infrastructure: Classrooms, Library And Facilities

1) What is your opinion about the classrooms where lessons and other teaching activities have been held?\*

Answers	v.a.	%
A - Always or nearly always adequate	1444	76,6%
B - Often adequate	406	21,5%
C - Rarely adequate	30	1,6%
D - Never adequate	3	0,2%
E - I did not use them	1	0,1%
<b>Total</b>	<b>1884</b>	<b>100%</b>
NA	32	

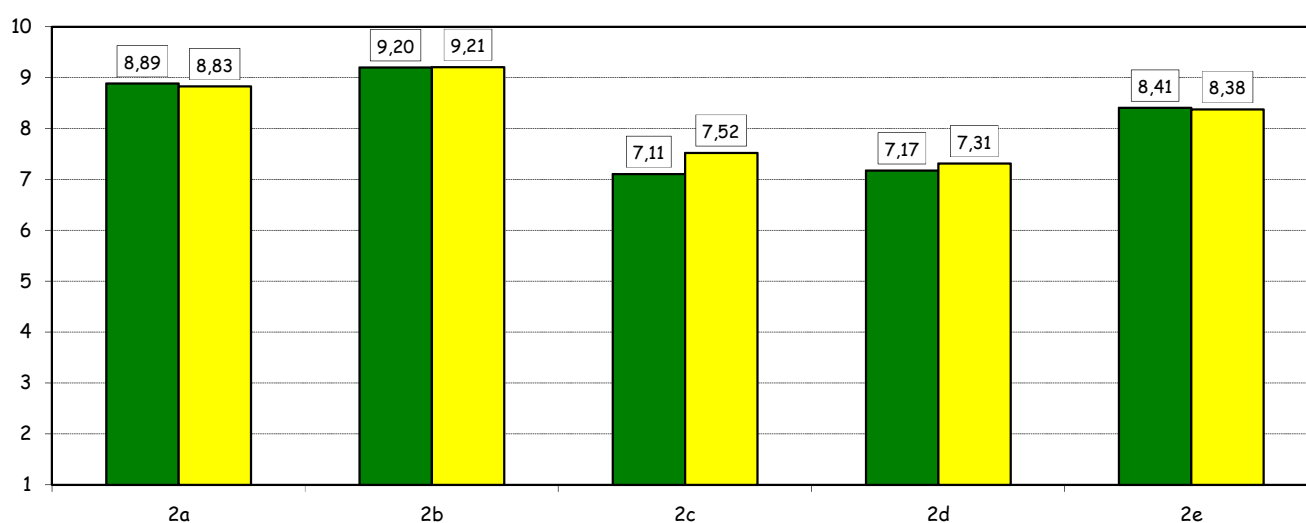
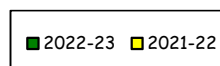


2) How would you evaluate:

(In case of answer "A", "B", "C" or "D" to item no.1)

Item	Answers	Negative				Positive				Total		N.R.
		1-2		3-4-5		6-7-8		9-10		a.v.	%	
		a.v.	%	a.v.	%	a.v.	%	a.v.	%			
a) The adequacy of the audio and multimedia systems (e.g. instructor's computer, projectors, video players) installed in the classrooms.		2	0,1	27	1,4	579	30,8	1272	67,7	1880	100,0	36
b) The cleanliness of classrooms and of other common areas on campus (corridors, halls, study rooms).		3	0,2	17	0,9	360	19,2	1492	79,7	1872	100,0	11
c) The adequacy of the amount of areas/seats reserved to individual study in the University Library.		157	8,4	286	15,3	730	39,1	696	37,2	1869	100,0	14
d) The adequacy of the amount of areas/seats reserved to individual study in other buildings on campus.		124	6,6	290	15,5	794	42,5	661	35,4	1869	100,0	14
e) The clarity and adequacy of the signage system on campus.		17	0,9	92	5,0	727	39,4	1007	54,6	1843	100,0	40

Over time comparison

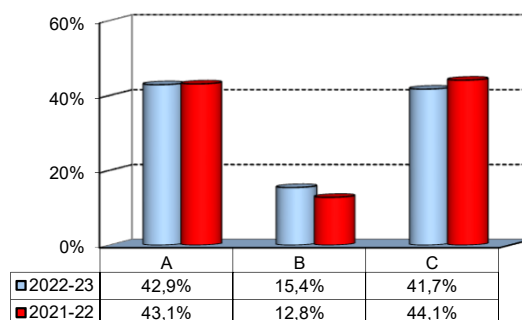


(\*): the percentage shown on the graphs is calculated by excluding the responses of those who declare that they have not used the service.

## Infrastructure: Classrooms, Library And Facilities

3) What is your overall opinion on the PC Labs and IT facilities provided by the University?

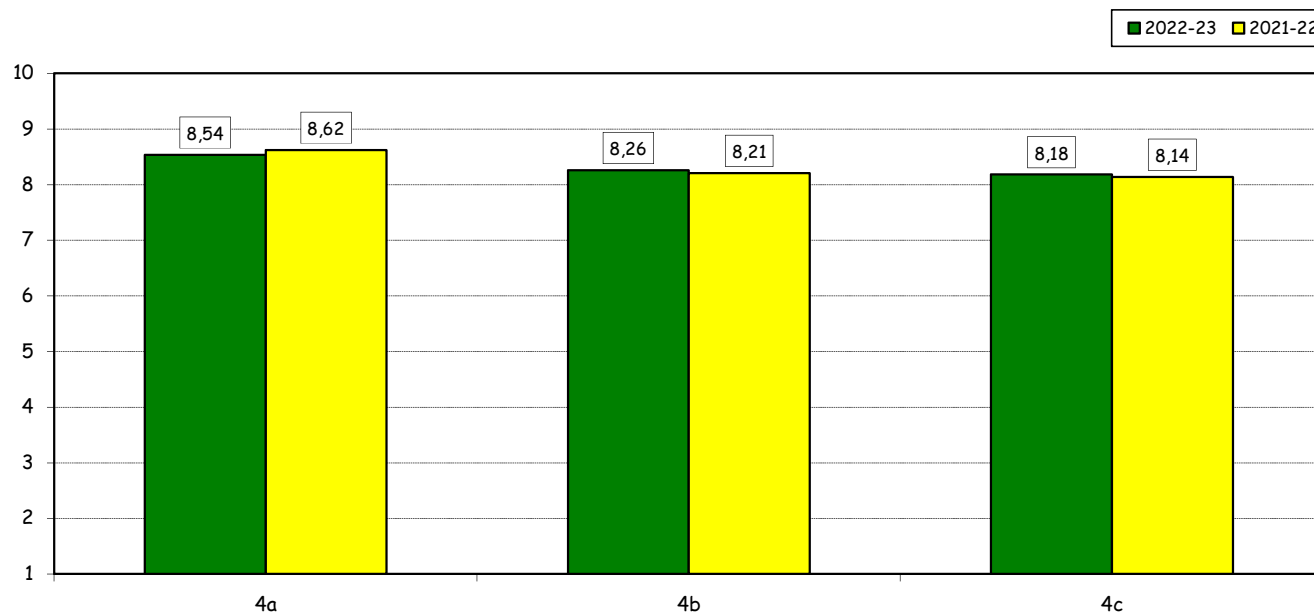
Answers	a.v.	%
A- Adequate in number	804	42,9%
B- Inadequate in number	289	15,4%
C- Never used	782	41,7%
<b>Total</b>	<b>1875</b>	<b>100%</b>
NA	41	



4) How do you evaluate:

Item	Answers	Negative				Positive				Total	N.R.
		1-2		3-4-5		6-7-8		9-10			
		a.v.	%	a.v.	%	a.v.	%	a.v.	%		
a) The availability of technical staff supporting students (Tutors) in PC Labs.*	6	0,6	41	3,8	422	39,4	601	56,2	1070	100,0	23
b) The convenience of the PC Labs' opening hours.*	9	0,9	59	5,6	470	44,5	519	49,1	1057	100,0	36
c) The level of accessibility and usability of the University's IT services (Internet access points, Punto Blu, Virtual Punto Blu, wireless connection).	18	1,0	109	5,9	852	46,3	861	46,8	1840	100,0	35

### Over time comparison

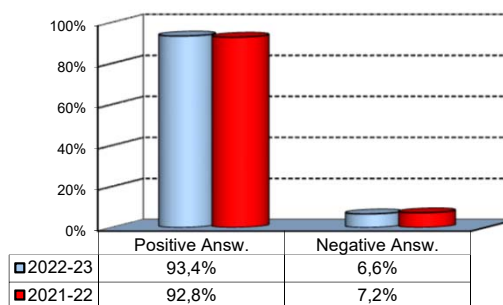


(\*): Only in case of answer "A" or "B" to item no.3

## Infrastructure: Classrooms, Library And Facilities

5) What is your overall opinion on the Library's services, such as support for individual study?\*

Answers	a.v.	%
A - Very Positive	681	36,2%
B - Quite positive	822	43,7%
C - Quite negative	87	4,6%
D - Very Negative	20	1,1%
E - Never used	269	14,3%
<b>Total</b>	<b>1879</b>	<b>100%</b>
NA	37	



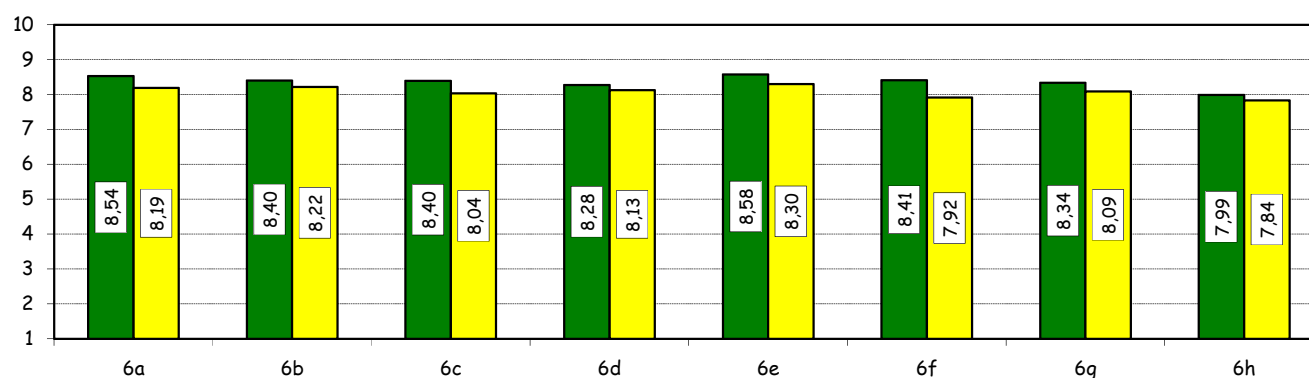
6) How would you evaluate:

(In case of answer "A", "B", "C" or "D" to item no. 5)

Item	Answers	Negative				Positive				Total		N.A. a.v.
		1-2		3-4-5		6-7-8		9-10		a.v.	%	
		a.v.	%	a.v.	%	a.v.	%	a.v.	%			
a) The convenience of the Library's opening hours and access to its main services.	6	0,8	28	3,5	302	37,9	461	57,8	797	100,0	813	
b) Range of subjects covered in hardcopy collections (books and journals) compared to your needs of study and research	3	0,4	24	3,1	363	46,3	394	50,3	784	100,0	826	
c) The relevance and updating of online collections (e-books, e-journals, databases) compared to your needs of study and research	2	0,3	29	3,7	350	44,6	404	51,5	785	100,0	825	
d) The ease of use of search tools available on the Library website	3	0,4	36	4,6	355	45,2	392	49,9	786	100,0	824	
e) The assistance provided by the Library staff	0	0,0	22	2,8	309	39,7	448	57,5	779	100,0	831	
f) Availability of documents (textbooks, articles, chapters, case studies, etc.) used in individual courses	1	0,1	24	3,1	346	44,2	411	52,6	782	100,0	828	
g) The Library website as a source of information on the services offered and as a point of access for resources	3	0,4	35	4,5	346	44,2	398	50,9	782	100,0	828	
h) The usefulness of workshops offered by the Library to understand how to use the resources available (catalogues, e-journals, databases, etc.)	11	1,4	49	6,4	382	50,1	320	42,0	762	100,0	848	

Over time comparison

2022-23 2021-22



(\*): the percentage shown on the graphs is calculated by excluding the responses of those who declare that they have not used the service.