

**TEACHING EVALUATION**

**BACHELOR IN  
ECONOMIC AND SOCIAL SCIENCES  
2020-21 a.y.**



## Teaching evaluation 2020-2021 a.y.- Attending Students

### Undergraduate School

Degree programme: BESS

N° of questionnaires processed: 842

## 1. EVALUATION OF ATTENDING STUDENTS\*

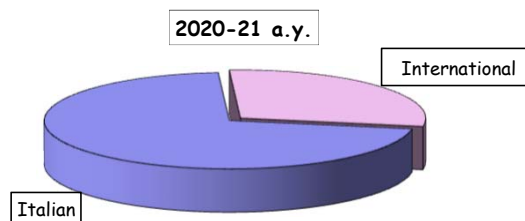
### STUDENT INFORMATION

#### Year of study

	Questionnaires processed		Questionnaires processed/students	
	a. v.	%	2020-21	2019-20
1°	388	46,1	41,0	47,9
2°	251	29,8	27,6	39,2
3°	203	24,1	27,7	41,2
TOTAL	842	100,0	32,5	42,6

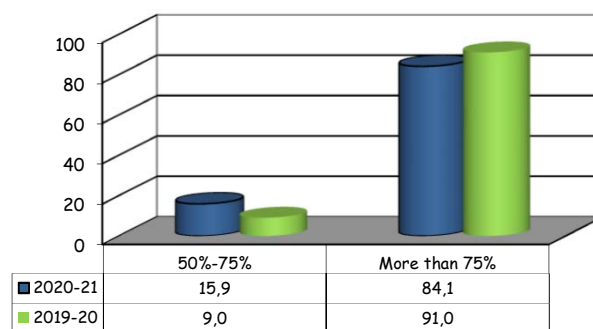
#### Secondary School Background

	a. v.	%	
		2020-21	2019-20
Italian	600	71,3	57,9
International	242	28,7	42,1
TOTAL	842	100,0	100,0



#### Percentage of lessons attended (as declared by the student)

	a. v.	%	
		2020-21	2019-20
50%-75%	134	15,9	9,0
More than 75%	708	84,1	91,0
TOTAL	842	100,0	100,0



(\*): This section summarizes the statistical results of evaluations given by students who declared (in the classroom or remote survey) an attendance of more than 50% of the course lessons.

## Teaching evaluation 2020-2021 a.y. - Attending Students

### Undergraduate School

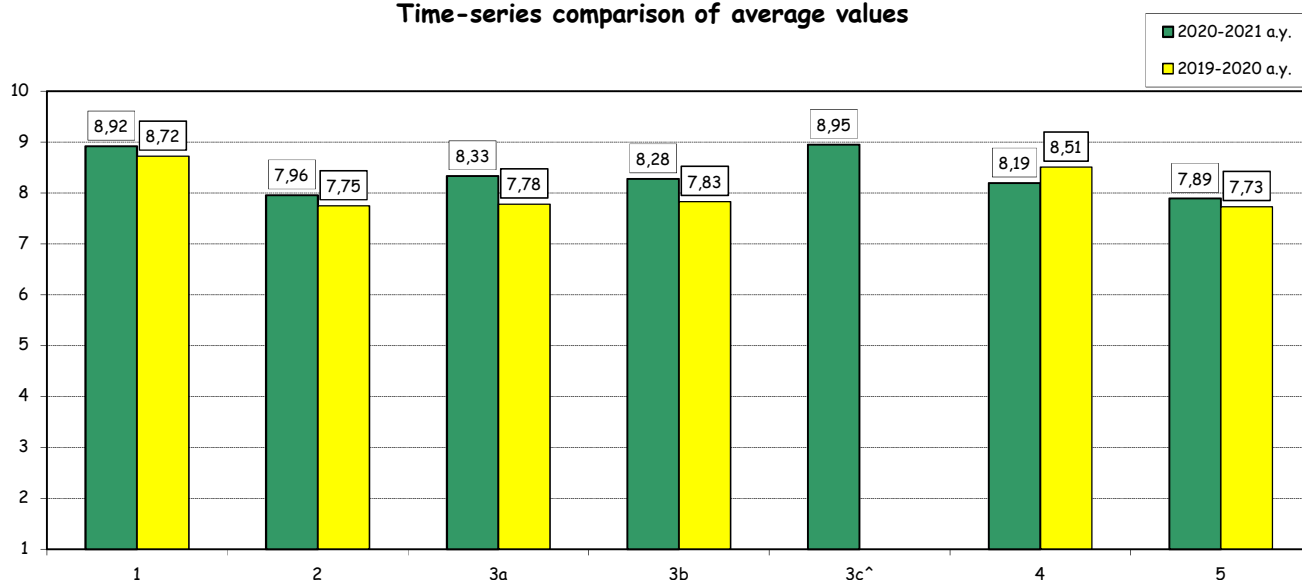
Degree programme: BESS

N° of questionnaires processed: 842

### SECTION A - ORGANISATION OF THE COURSE

Item		Strongly disagree		Disagree		Agree		Strongly agree		Total		N.R.	Median values
		1-2		3-4-5		6-7-8		9-10		a.v.	%		
		a.v.	%	a.v.	%	a.v.	%	a.v.	%				
1	The schedule of lectures, practice and any other teaching activities has been respected.	5	0,6	18	2,2	218	26,2	592	71,1	833	100,0	9	9,0
2	Your prior academic knowledge was sufficient for understanding the topics covered in the course and included in the examination program.	46	5,5	68	8,1	292	34,8	433	51,6	839	100,0	3	9,0
3a	The course material and recommended reading list are clear.	20	2,4	52	6,2	288	34,4	477	57,0	837	100,0	5	9,0
3b	The course material and recommended reading list are adequate (useful/complete) for the study of the course subject.	21	2,5	52	6,2	301	36,0	462	55,3	836	100,0	6	9,0
3c <sup>^</sup>	Having access to the recorded lessons was useful for learning the course topics.	5	0,6	35	4,2	187	22,4	609	72,8	836	100,0	6	10,0
4	The exam rules and procedures have been explained clearly.	34	4,1	62	7,4	258	31,0	479	57,5	833	100,0	9	9,0
5	The workload required for this course is appropriate compared to the number of credits allocated to it.	36	4,3	68	8,1	335	40,0	398	47,6	837	100,0	5	8,0

**Time-series comparison of average values**



(<sup>^</sup>): item added for the first time in the academic year 2020-21.

## Teaching evaluation 2020-2021 a.y. - Attending Students

### Undergraduate School

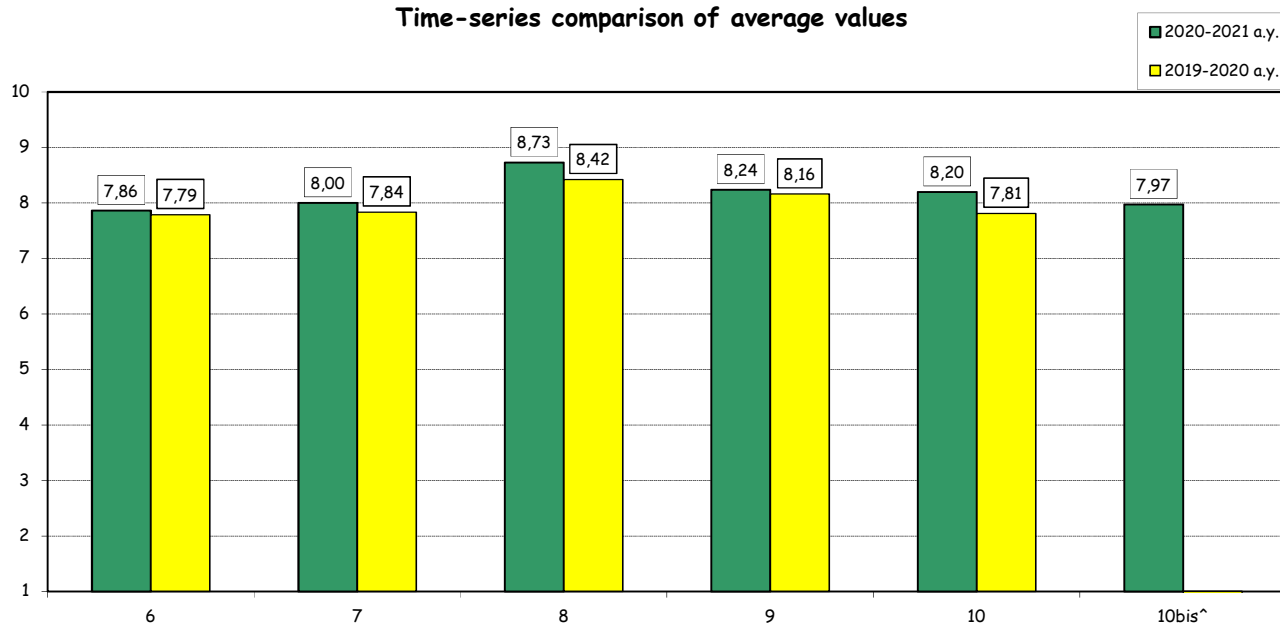
Degree programme: BESS

N° of questionnaires processed: 842

## SECTION B - TEACHING AND STUDY ACTIVITIES

Item		Strongly disagree		Disagree		Agree		Strongly agree		Total		N.A.	Median Values
		1-2		3-4-5		6-7-8		9-10					
		a.v.	%	a.v.	%	a.v.	%	a.v.	%	a.v.	%		
6	The instructor stimulates interest in the course subject.	56	5,2	98	9,1	387	35,9	536	49,8	1077	100,0	7	8,0
7	The instructor explains the topics in a clear manner.	38	3,5	91	8,5	403	37,5	543	50,5	1075	100,0	8	9,0
8	The instructor is available for clarifications and explanations (even remotely)	15	1,4	47	4,4	289	27,0	719	67,2	1070	100,0	12	9,0
9	Teaching activities are well organized.	34	3,2	70	6,5	382	35,6	586	54,7	1072	100,0	11	9,0
10	The instructor encouraged participation during the lessons in the classroom or remotely (in the manner permitted by the electronic platform used).	28	2,6	78	7,3	399	37,1	570	53,0	1075	100,0	9	9,0
10bis <sup>^</sup>	Remote interaction during the lessons is effective.	19	2,3	79	9,7	329	40,5	386	47,5	813	100,0	29	8,0

**Time-series comparison of average values**



(°): The first five items of this section are repeated several times in case of separate evaluation of each faculty member who taught in the courses. For this reason the total amount of answers may vary significantly from that recorded for the rest of the items.

(<sup>^</sup>): item added for the first time in the academic year 2020-21.

Teaching evaluation 2020-2021 a.y. - Attending Students

Undergraduate School

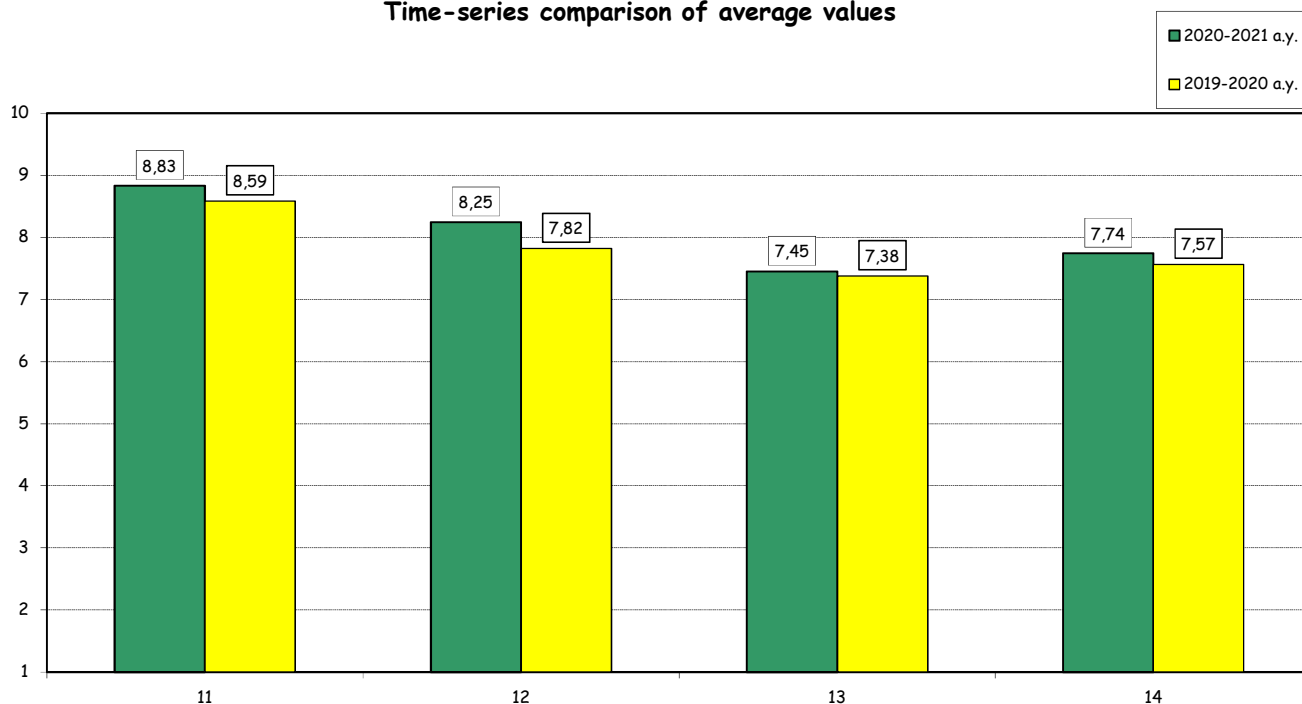
Degree programme: BESS

N° of questionnaires processed: 842

SECTION B - TEACHING AND STUDY ACTIVITIES

Item	Answers	Strongly disagree		Disagree		Agree		Strongly agree		Total		N.A.	N.R.	Median values
		1-2		3-4-5		6-7-8		9-10						
		a.v.	%	a.v.	%	a.v.	%	a.v.	%	a.v.	%			
11	The course has been carried out in accordance with the syllabus published on the website (taking into account any changes due to the return to distance learning).	3	0,4	18	2,2	257	31,3	542	66,1	820	100,0		22	9,0
12	The supplementary activities (practice, workshops, group work, etc.), if present, have been helpful in learning the course topics.	19	3,2	40	6,7	195	32,7	343	57,5	597	100,0		245	8,0
13	The support provided by teaching assistants (if present) has been helpful in learning the course topics.	26	6,8	53	13,8	139	36,3	165	43,1	383	100,0	104	355	8,0
14	Teaching assistants (if present) are competent and helpful	24	6,2	39	10,1	141	36,6	181	47,0	385	100,0	107	350	8,0

Time-series comparison of average values



(°): Items submitted only for courses where the Teaching Assistants had clear visibility to students.

## Teaching evaluation 2020-2021 a.y. - Attending Students

### Undergraduate School

Degree programme: BESS

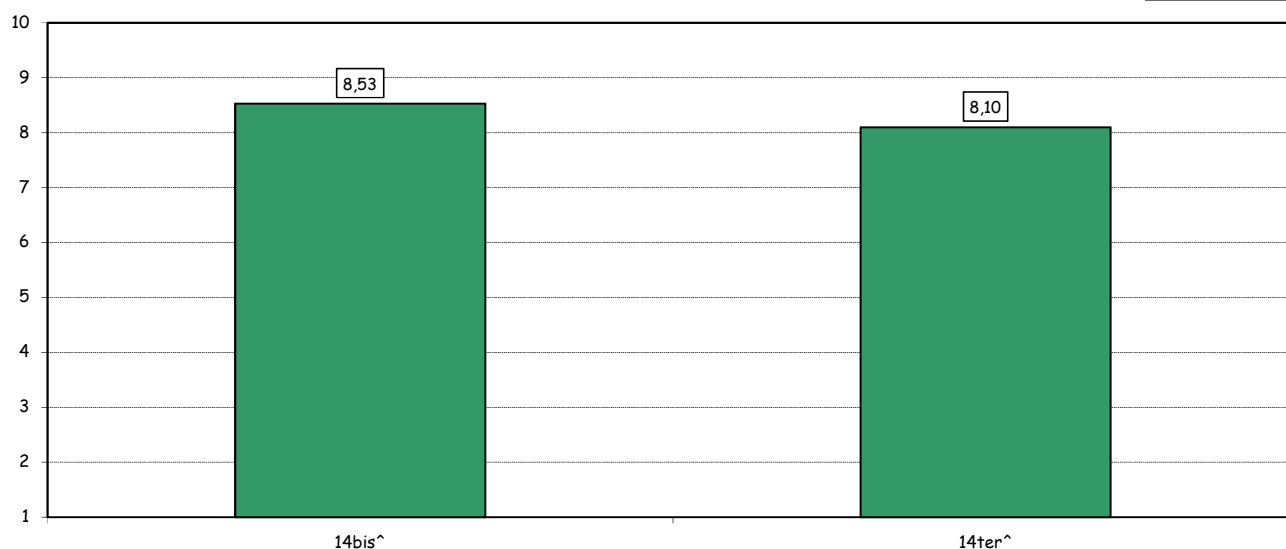
N° of questionnaires processed: 842

### SECTION C - TECHNICAL ASPECTS OF TEACHING

Item		Strongly disagree		Disagree		Agree		Strongly agree		Total		N.A.	Median Values
		1-2		3-4-5		6-7-8		9-10		a.v.	%		
		a.v.	%	a.v.	%	a.v.	%	a.v.	%				
14bis <sup>^</sup>	The electronic platform BlackBoard used to support teaching worked well during the semester.	3	0,4	29	3,5	331	40,4	457	55,7	820	100,0	22	9,0
14ter <sup>^</sup>	The electronic platform BlackBoard makes remote interaction with the instructor easy and effective	11	1,4	53	6,6	378	46,7	367	45,4	809	100,0	33	8,0

**Comparison of average values**

■ 2020-2021 a.y.



(<sup>^</sup>): item added for the first time in the academic year 2020-21.

## Teaching evaluation 2020-2021 a.y. - Attending Students

### Undergraduate School

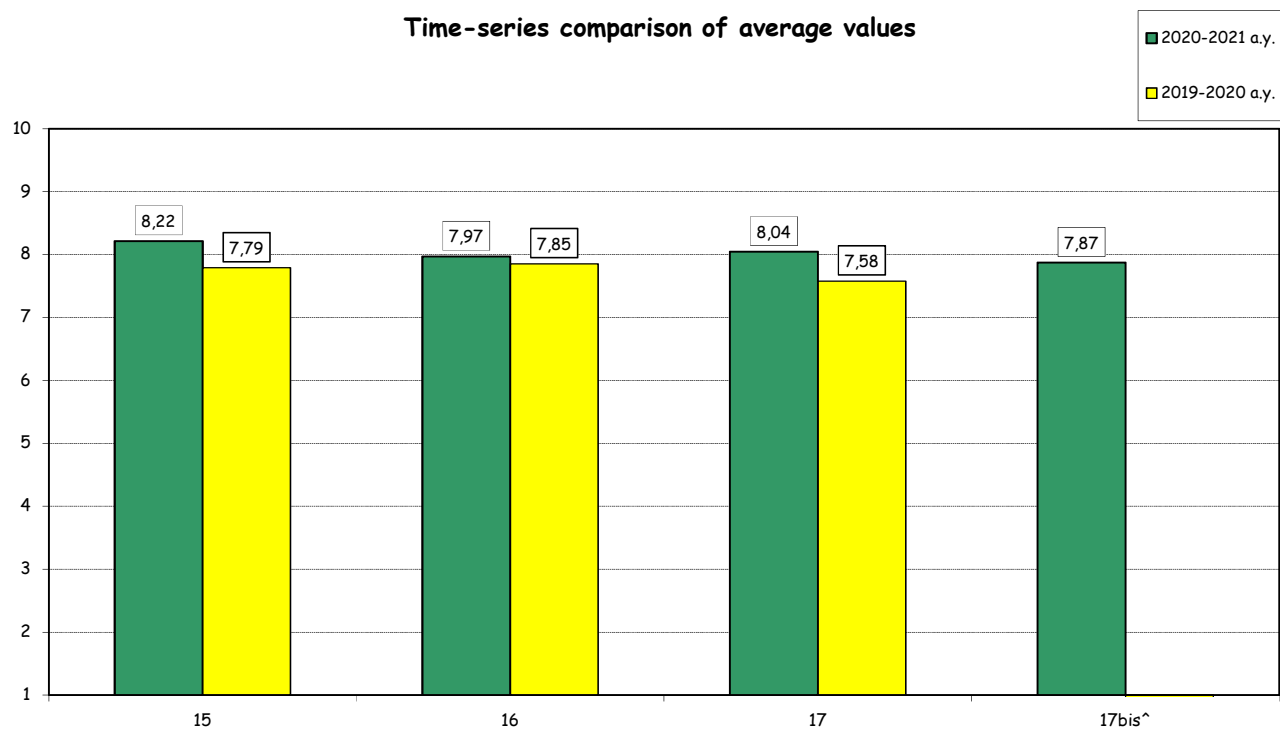
Degree programme: BESS

N° of questionnaires processed: 842

### SECTION D - OVERALL ASSESSMENT

Item		Strongly disagree		Disagree		Agree		Strongly agree		Total		N.A.	Median Values
		1-2		3-4-5		6-7-8		9-10		a.v.	%		
		a.v.	%	a.v.	%	a.v.	%	a.v.	%				
15	The overall quality of teaching is satisfactory.	21	2,5	57	6,9	297	36,0	451	54,6	826	100,0	16	9,0
16	I am interested in the course topics.	30	3,6	73	8,8	314	38,0	410	49,6	827	100,0	15	8,0
17	Overall I am satisfied with the way the course has been carried out.	26	3,2	65	7,9	295	35,9	435	53,0	821	100,0	21	9,0
17bis <sup>A</sup>	The use of online and/or blended teaching methods has been effective in learning the course topics.	26	3,3	74	9,3	332	41,6	367	45,9	799	100,0	43	8,0

**Time-series comparison of average values**



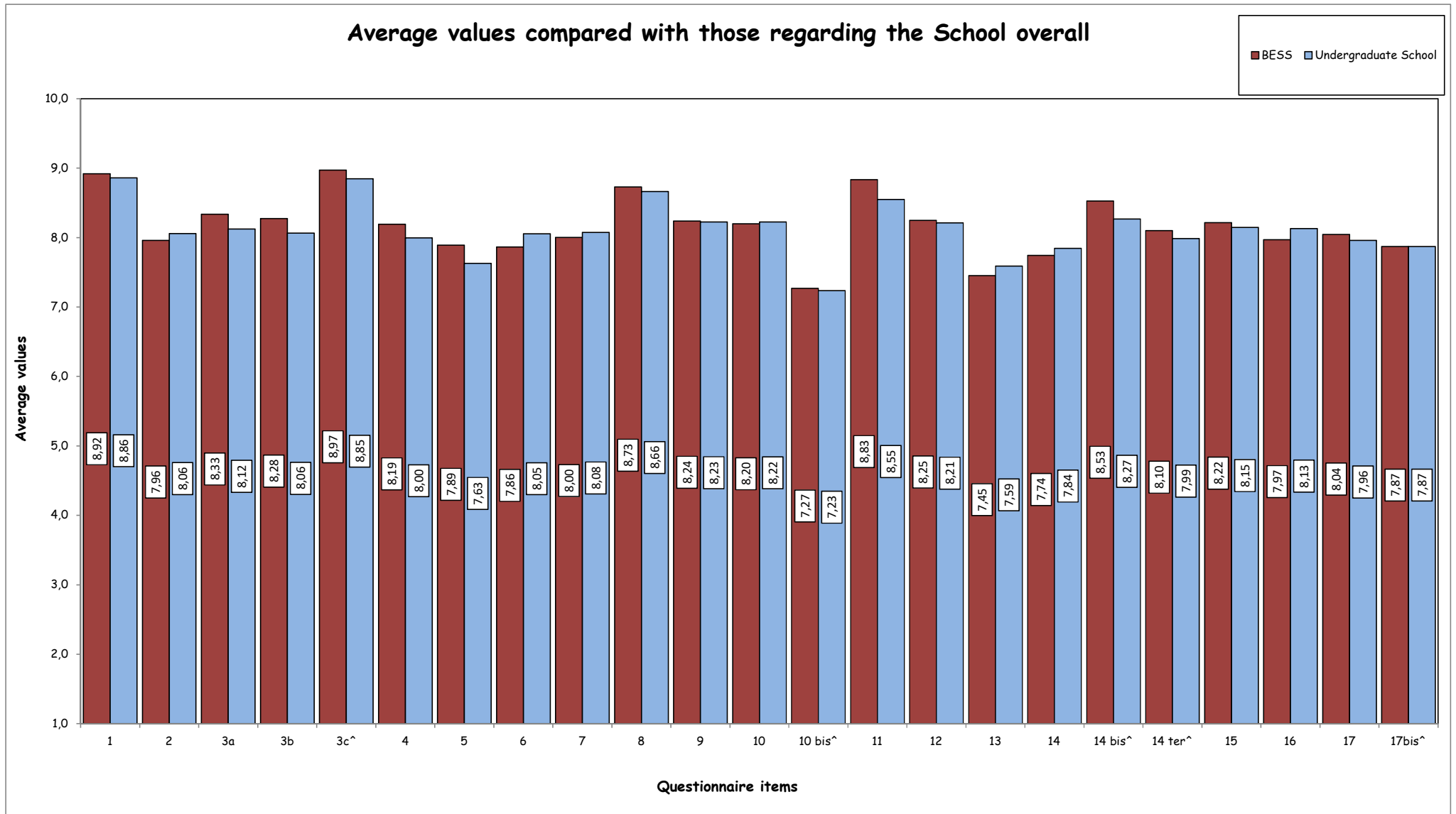
(<sup>^</sup>): item added for the first time in the academic year 2020-21.

Teaching evaluation 2020-2021 a.y.- Attending Students

Undergraduate School

Degree programme: BESS

N° of questionnaires processed: 842



(^): item added for the first time in the academic year 2020-21.

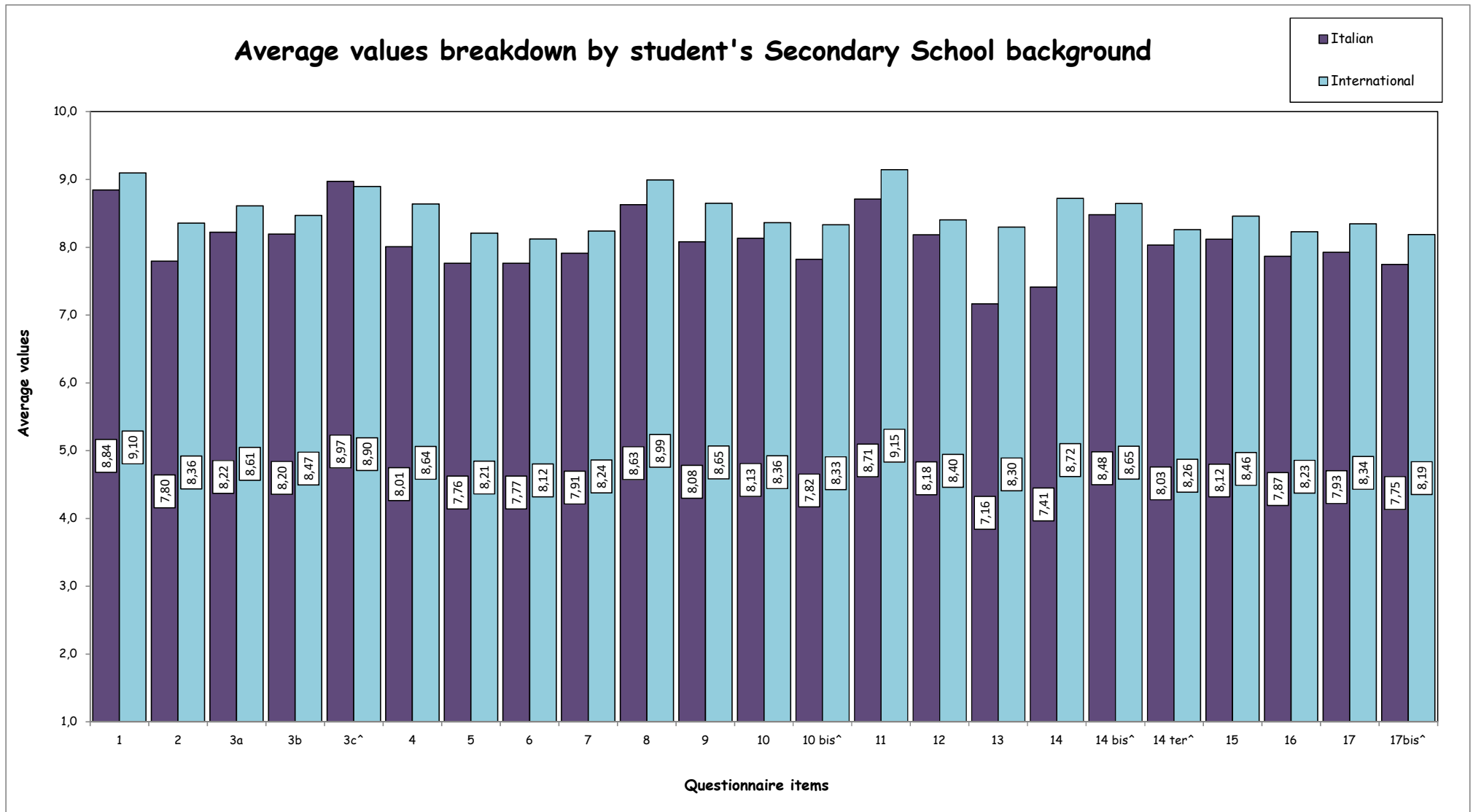


Teaching evaluation 2020-2021 a.y.- Attending Students

Undergraduate School

Degree programme: BESS

N° of questionnaires processed: 842



(^): item added for the first time in the academic year 2020-21.

## Teaching evaluation a.y. 2020-2021 - Non Attending Students

### Undergraduate School

Degree programme: BESS

N° of questionnaires processed: 88

## 2. EVALUATION OF NOT ATTENDING STUDENTS\*

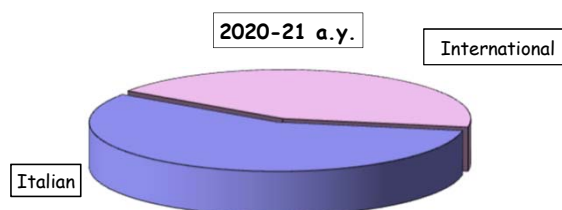
### STUDENT INFORMATION

#### Year of study

	Questionnaires processed		Questionnaires processed/students enrolled	
	a.v.	%	2020-21	2019-20
1°	17	19,3	1,8	7,5
2°	23	26,1	2,5	7,2
3°	48	54,5	6,5	10,4
TOTAL	88	100,0	3,4	8,3

#### Secondary School Background

	a.v.	%	
		2020-21	2019-20
Italian	50	56,8	45,9
International	38	43,2	54,1
TOTAL	88	100,0	100,0



(\*): This section summarizes the statistical results of evaluations given by students who declared (in the classroom or remote survey) an attendance of less than 50% of the course lessons.

## Teaching evaluation a.y. 2020-2021 - Non Attending Students

### Undergraduate School

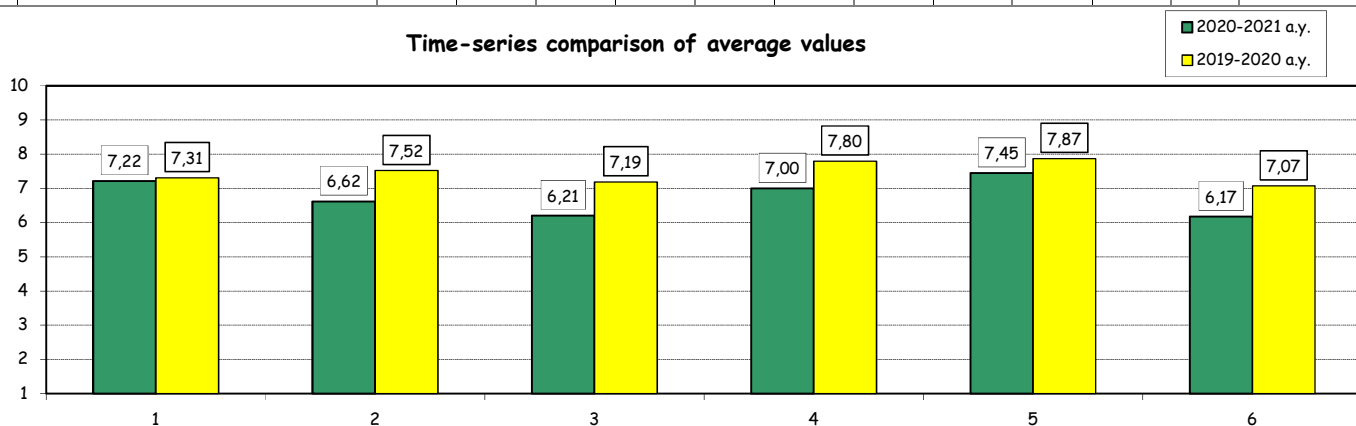
Degree programme: BESS

N° of questionnaires processed: 88

### EVALUATIONS

Item		Strongly disagree		Disagree		Agree		Strongly agree		Total		N.A.	Median Values
		1-2		3-4-5		6-7-8		9-10					
		a.v.	%	a.v.	%	a.v.	%	a.v.	%	a.v.	%		
1	Your prior academic knowledge was sufficient for understanding the topics covered in the course and included in the examination program.	5	5,7	12	13,8	42	48,3	28	32,2	87	100,0	1	8,0
2	The workload required for this course is appropriate compared to the number of credits allocated to it.	9	10,3	13	14,9	47	54,0	18	20,7	87	100,0	1	7,0
3	The course material and recommended reading list are adequate (useful/complete) for the study of the course subject.	16	18,4	16	18,4	33	37,9	22	25,3	87	100,0	1	7,0
4	The exam rules and procedures have been explained clearly.	15	17,2	13	14,9	17	19,5	42	48,3	87	100,0	1	8,0
5	The instructor is available for clarifications and explanations (even remotely)	7	8,0	12	13,8	30	34,5	38	43,7	87	100,0	1	8,0
6	I am interested in the course topics.	18	20,7	12	13,8	34	39,1	23	26,4	87	100,0	1	7,0

**Time-series comparison of average values**



**Average values compared with those regarding students who declared an attendance of more than 50% of the lessons**

