

EVALUATION OF THE DEGREE PROGRAM AND THE UNIVERSITY EXPERIENCE

BACHELOR IN ECONOMIA E FINANZA Graduation year 2023

N° QUESTIONNAIRES PROCESSED: 248

N° OF GRADUATE STUDENTS: 270

RESPONSE RATE: 91,9%



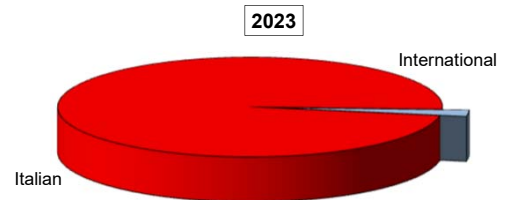
EVALUATION OF STUDENT EXPERIENCE

Economia e finanza

General information

School Career

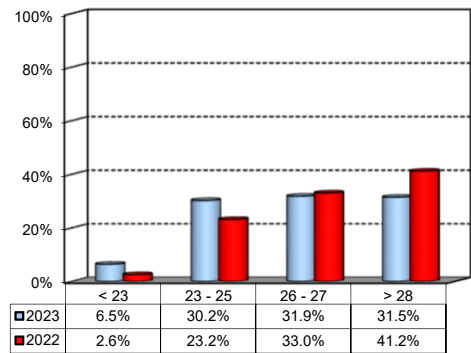
Answers	a.v.	%	
		2023	2022
Italian	243	98.0%	99.1%
International	5	2.0%	0.9%
Total	248	100%	100%
NA	0		



Average mark of the exams passed:

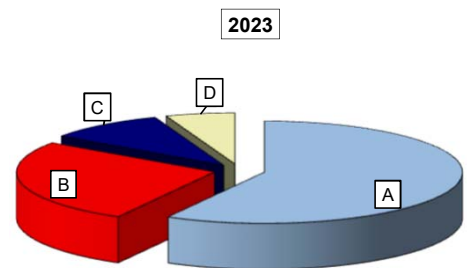
(approximate average expressed in 30/30)

Answers	a.v.	%
< 23	16	6.5%
23 - 25	75	30.2%
26 - 27	79	31.9%
> 28	78	31.5%
Total	248	100%
NA	0	



How many of the courses included in your curriculum did you attend regularly?

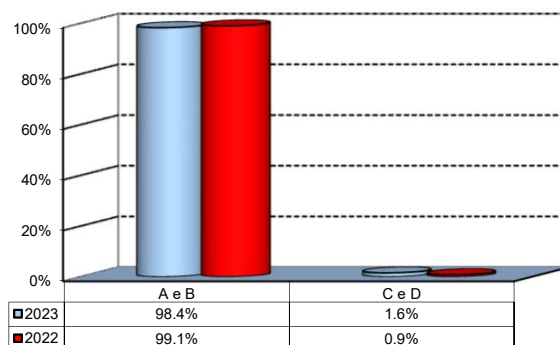
Answers	a.v.	%	
		2023	2022
A - More than 75%	144	58.1%	73.9%
B - Between 50 and 75%	66	26.6%	18.7%
C - Between 25 and 50%	24	9.7%	6.1%
D - Less than 25%	14	5.6%	1.3%
Total	248	100%	100%
NA	0		



Infrastructure: Classrooms, Library And Facilities

1) What is your opinion about the classrooms where lessons and other teaching activities have been held?*

Answers	a.v.	%
A - Always or nearly always adequate	178	72.4%
B - Often adequate	64	26.0%
C - Rarely adequate	3	1.2%
D - Never adequate	1	0.4%
E - I did not use them	0	0.0%
Total	246	100%
NA	2	

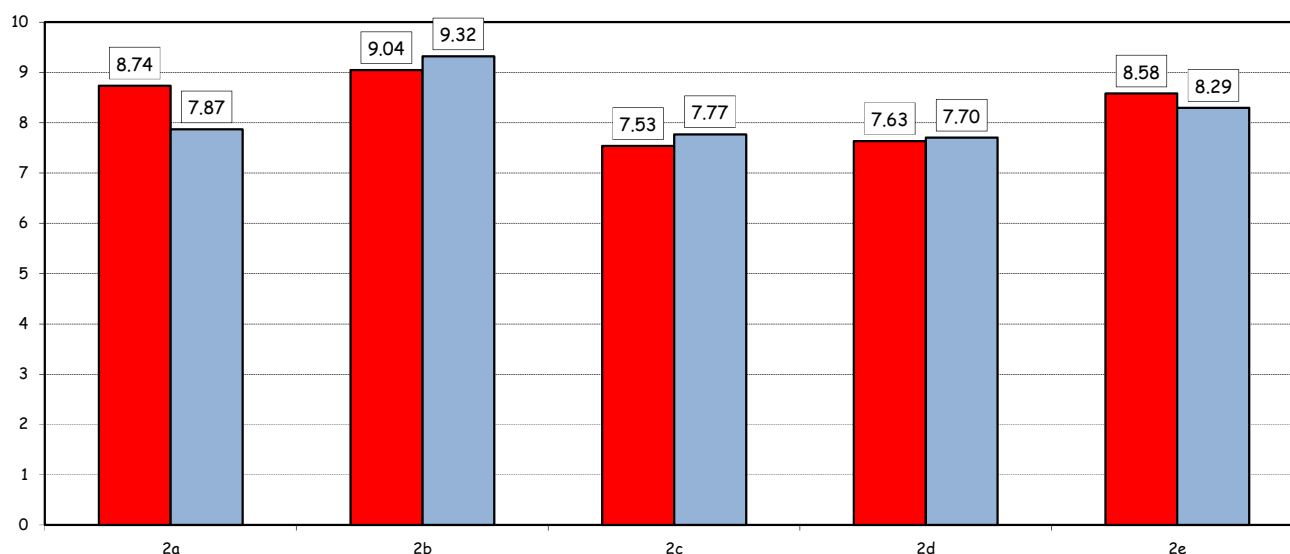


2) How would you evaluate:

Item	Answers	Negative				Positive				Total		N.R.
		1-2		3-4-5		6-7-8		9-10		a.v.	%	
		a.v.	%	a.v.	%	a.v.	%	a.v.	%			
a) The adequacy of the audio and multimedia systems (e.g. instructor's computer, projectors, video players) installed in the classrooms		0	0.0	3	1.2	92	37.4	151	61.4	246	100.0	2
b) The cleanliness of classrooms and of other common areas on campus (corridors, halls, study rooms)		0	0.0	4	1.6	63	25.6	179	72.8	246	100.0	2
c) The adequacy of the amount of areas/seats reserved to individual study in the University Library		8	3.3	26	10.8	119	49.6	87	36.3	240	100.0	8
d) The adequacy of the amount of areas/seats reserved to individual study in other buildings on campus		8	3.3	17	6.9	136	55.3	85	34.6	246	100.0	2
e) The clarity and adequacy of the signage system on campus		0	0.0	8	3.3	103	42.4	132	54.3	243	100.0	5

Over time comparison of average values

■ 2023 ■ 2022

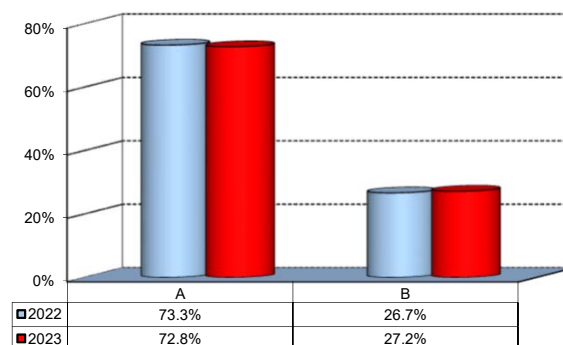


(*): the percentage shown on the graphs is calculated by excluding the responses of those who declare that they have not used the service.

Infrastructure: Classrooms, Library And Facilities

3) What is your overall opinion on the PC Labs and IT facilities provided by the University?*

Answers	a.v.	%
A- Adequate in number	123	50.4%
B- Inadequate in number	46	18.9%
C- Never used	75	30.7%
Total	244	100%
NA	4	

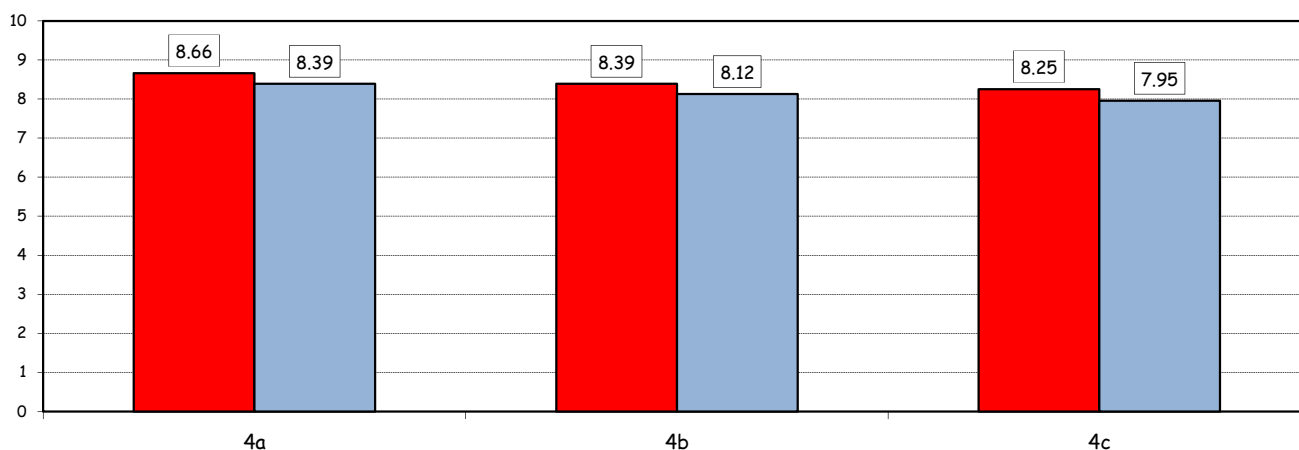


4) How would you evaluate:

Item	Answers	Negative				Positive				Total		NA
		1-2		3-4-5		6-7-8		9-10		a.v.	%	
		a.v.	%	a.v.	%	a.v.	%	a.v.	%			
a) The availability of technical staff supporting students (Tutors) in PC Labs [^]		0	0.0	3	1.8	74	44.0	91	54.2	168	100.0	1
b) The convenience of the PC Labs' opening hours [^]		0	0.0	5	3.0	83	50.3	77	46.7	165	100.0	4
c) The level of accessibility and usability of the University's IT services (Internet access points, Punto Blu, Virtual Punto Blu, wireless connection)		3	1.2	11	4.5	109	44.9	120	49.4	243	100.0	5

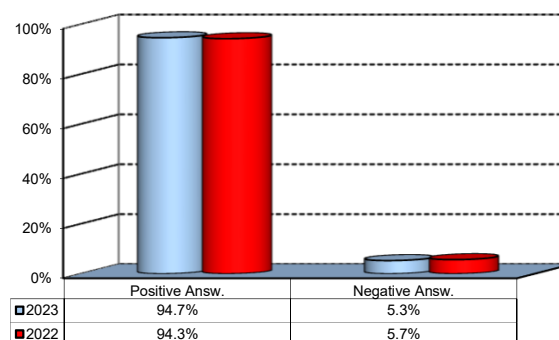
Over time comparison of average values

■ 2023 ■ 2022



5) What is your overall opinion on the Library's services, such as support for individual study?*

Answers	a.v.	%
A - Very Positive	103	42.2%
B - Quite positive	110	45.1%
C - Quite negative	10	4.1%
D - Very Negative	2	0.8%
E - Never used	19	7.8%
Total	244	100%
NA	4	



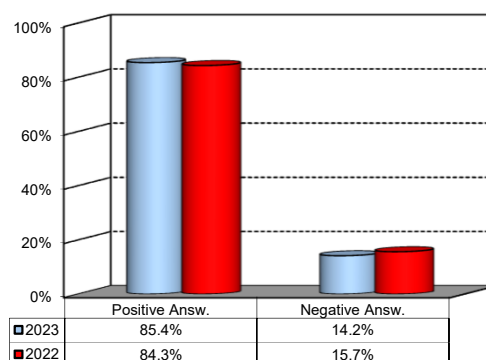
([^]): Only in case of answer "A" or "B" to item no.3

(*): the percentage shown on the graphs is calculated by excluding the responses of those who declare that they have not used the service.

Study experience

1) Was the knowledge acquired during secondary school adequate to undertake your Bachelor program?

Answers	a.v.	%
A - Definitely YES	104	42.1%
B - More YES than NO	107	43.3%
C - More NO than YES	30	12.1%
D - Definitely NO	5	2.0%
Total	246	100%
NA	2	

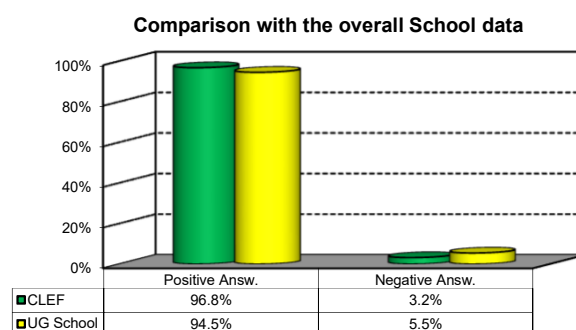
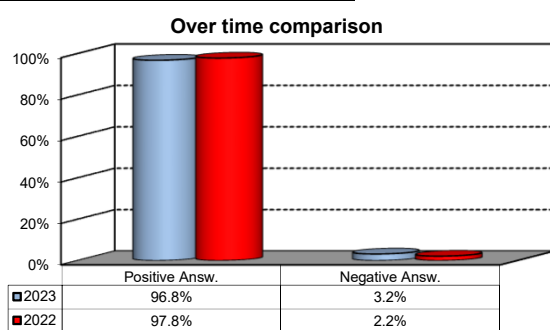


2) if you answered " More NO than YES" or "Definitely NO", indicate the subject or the subjects for which your previous knowledge was revealed to be insufficient:

	a.v.	%
MATEMATICA - MODULO 1 (GENERALE)	11	11.2%
MATEMATICA	8	8.2%
STATISTICA	8	8.2%
METODI QUANTITATIVI PER LA FINANZA	8	8.2%
Other	63	64.3%
Total	98	100%

3) On the whole, do you appreciate the qualifications you acquired at the end of the Bachelor program at Bocconi?

Answers	v.a.	%
A - Definitely YES	147	59.5%
B - More YES than NO	92	37.2%
C - More NO than YES	7	2.8%
D - Definitely NO	1	0.4%
Total	247	100%
NA	1	

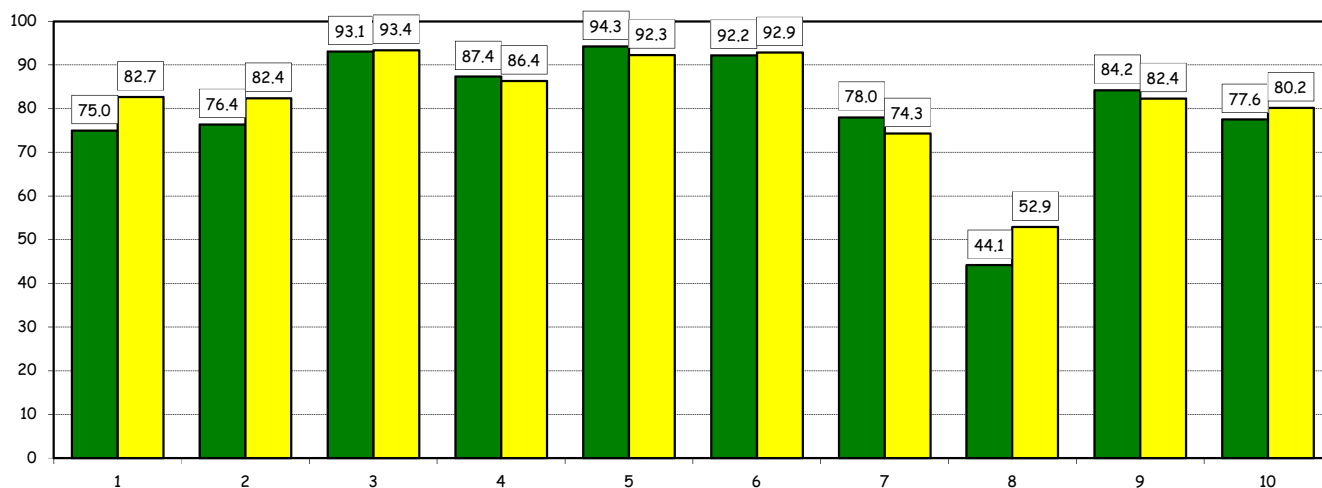


Study experience

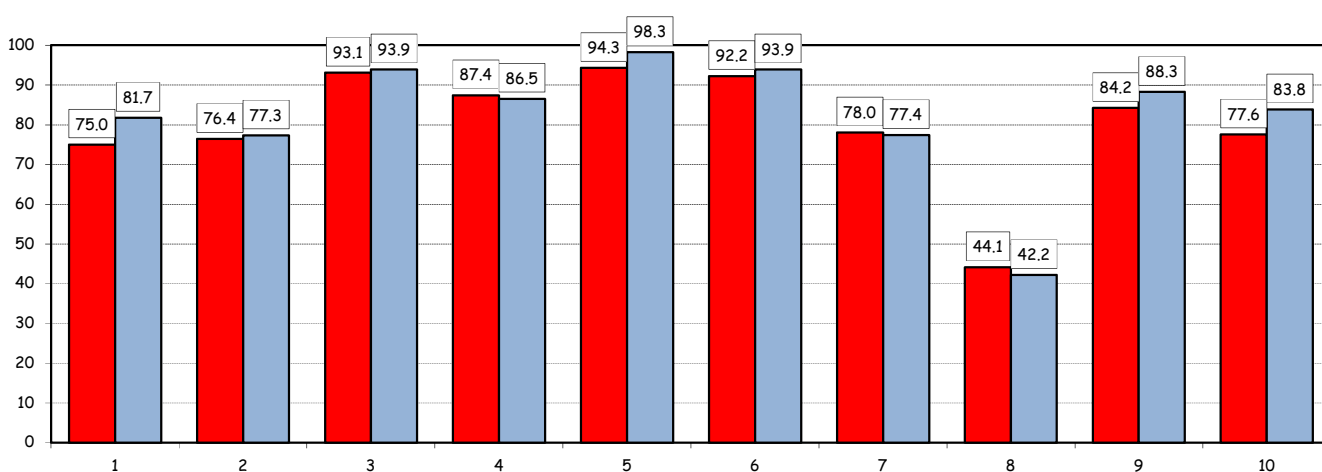
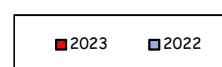
4) Do you think that your course of study at Bocconi has contributed to the development of the following skills?

Soft Skill	Item	Definitely YES		More YES than NO		More NO than YES		Definitely NO		Total		n.a.
		a.v.	%	a.v.	%	a.v.	%	a.v.	%	a.v.	%	a.v.
1	Ability to work on a team	65	26.2	121	48.8	50	20.2	12	4.8	248	100.0	0
2	Interpersonal skills	70	28.5	118	48.0	45	18.3	13	5.3	246	100.0	2
3	Organizational skills	139	56.5	90	36.6	14	5.7	3	1.2	246	100.0	2
4	Critical thinking skills	108	43.9	107	43.5	29	11.8	2	0.8	246	100.0	2
5	Ability to analyze and select information	128	52.2	103	42.0	11	4.5	3	1.2	245	100.0	3
6	Problem-solving ability	125	51.0	101	41.2	16	6.5	3	1.2	245	100.0	3
7	Written communication skills	70	28.5	122	49.6	41	16.7	13	5.3	246	100.0	2
8	Verbal communication skills	33	13.4	76	30.8	83	33.6	55	22.3	247	100.0	1
9	Ability to cope with stress	135	54.7	73	29.6	26	10.5	13	5.3	247	100.0	1
10	Computer Skills	61	24.9	129	52.7	42	17.1	13	5.3	245	100.0	3

**Positive answers (%):
comparison with the overall School data**



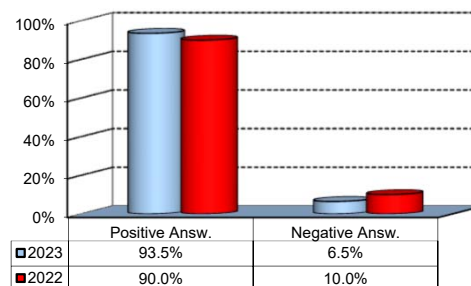
**Positive answers (%):
Over time comparison**



Study experience

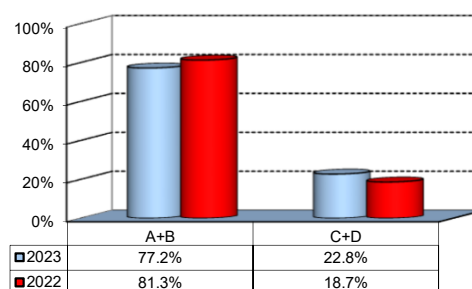
5) Do you think that the courses in your curriculum were adequately coordinated with each other?

	a. v.	%
A - Definitely YES	80	32.5%
B - More YES than NO	150	61.0%
C - More NO than YES	16	6.5%
D - Definitely NO	0	0.0%
Total	246	100%
NA	2	



6) Do you think that the overall study load was compatible with the length of the program?

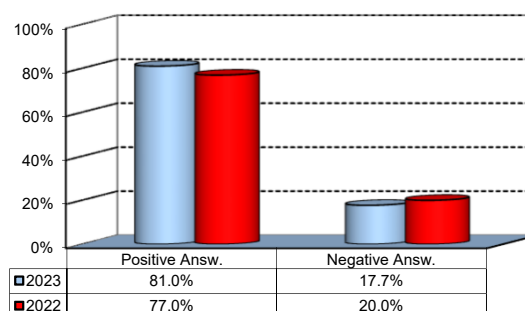
	a. v.	%
A - Definitely YES	51	20.7%
B - More YES than NO	139	56.5%
C - More NO than YES	47	19.1%
D - Definitely NO	9	3.7%
Total	246	100%
NA	2	



Final Report

1) Do you think that the supervision and assistance for preparing for your final report (internship report, final paper or other) were adequate?

	a. v.	%
A - Definitely YES	97	39.1%
B - More YES than NO	104	41.9%
C - More NO than YES	34	13.7%
D - Definitely NO	10	4.0%
E - Supervision was not expected	3	1.2%
Total	248	100%
NA	0	

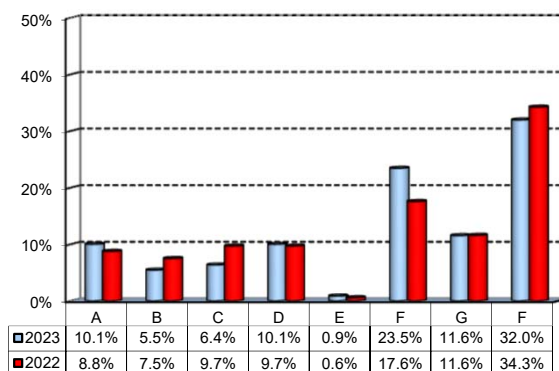


Extracurricular Activities

1) Which of the following extracurricular activities did you attend during the Bachelor Program?

(multiple answers admitted)

	a.v.	%
A - Interdisciplinary courses ("Sapere a tutto campo")	33	10.1%
B - Counseling and Self-Empowerment courses (CSE)	18	5.5%
C - Cultural Activities	21	6.4%
D - Sport activities	33	10.1%
E - Wellbeing courses	3	0.9%
F - IT Education Center courses (ITEC)	77	23.5%
G - Language Center courses	38	11.6%
H - None	105	32.0%
Total	328	100%
NA	0	

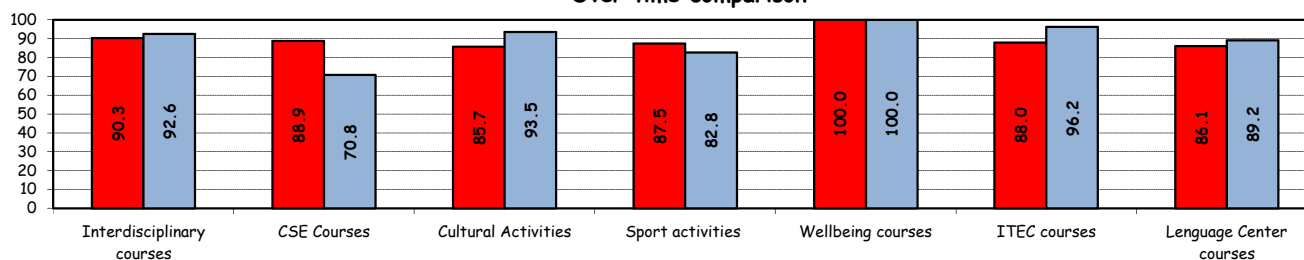


2) Do you think that the activities you took part in contributed to your cultural/educational enrichment?

	Definitely YES		More YES than NO		More NO than YES		Definitely NO		Total		NA
	a.v.	%	a.v.	%	a.v.	%	a.v.	%	a.v.	%	a.v.
A - Interdisciplinary courses	11	35.5	17	54.8	3	9.7	0	0.0	31	100.0	2
B - CSE courses	10	55.6	6	33.3	2	11.1	0	0.0	18	100.0	0
C - Cultural Activities	7	33.3	11	52.4	3	14.3	0	0.0	21	100.0	0
D - Sport activities	4	12.5	24	75.0	4	12.5	0	0.0	32	100.0	1
E - Wellbeing courses	1	33.3	2	66.7	0	0.0	0	0.0	3	100.0	0
F - ITEC courses	31	41.3	35	46.7	9	12.0	0	0.0	75	100.0	2
G - Language Center courses	12	33.3	19	52.8	5	13.9	0	0.0	36	100.0	2

Positive answers (%):

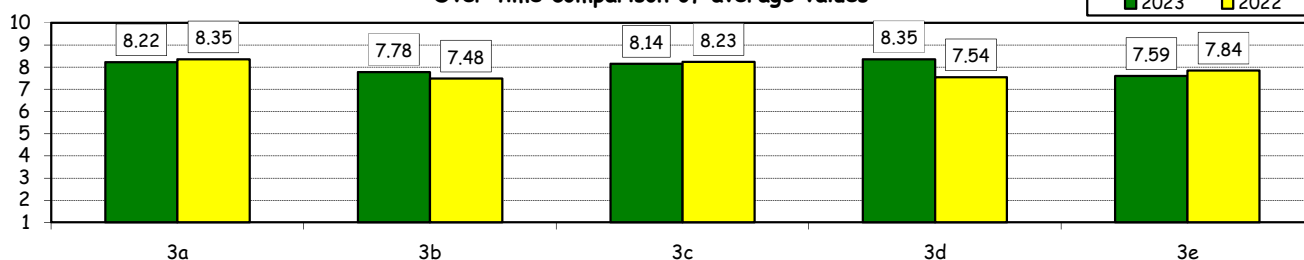
Over time comparison



How would you evaluate:

Item	Answers	Negative				Positive				Total	NA	
		1-2		3-4-5		6-7-8		9-10				
		a.v.	%	a.v.	%	a.v.	%	a.v.	%	a.v.	%	
3a) The range of and interest in the programmes offered		0	0.0	4	2.8	73	51.8	64	45.4	141	100.0	2
3b) The support you received from the Campus Life Office		4	2.9	6	4.3	79	57.2	49	35.5	138	100.0	5
3c) The support you received from ITEC		0	0.0	2	2.6	43	56.6	31	40.8	76	100.0	1
3d) The support you received from Language Center		0	0.0	0	0.0	21	56.8	16	43.2	37	100.0	1
3e) The support you received from Bocconi Sport Teams		0	0.0	3	9.4	21	65.6	8	25.0	32	100.0	1

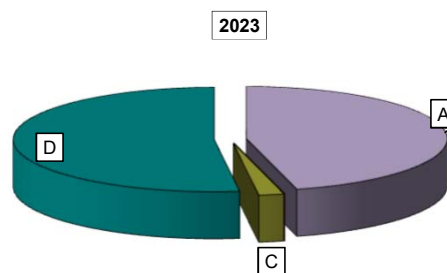
Over time comparison of average values



Experience Of Studying Abroad

1) Type of experience:

Answers	a.v.	%	
		2023	2022
A - Exchange Programme	114	46.0%	49.1%
B - Double Degree	0	0.0%	0.0%
C - Free-Mover	5	2.0%	4.8%
D - None	129	52.0%	46.1%
Total	248	100%	100%
NA	0		

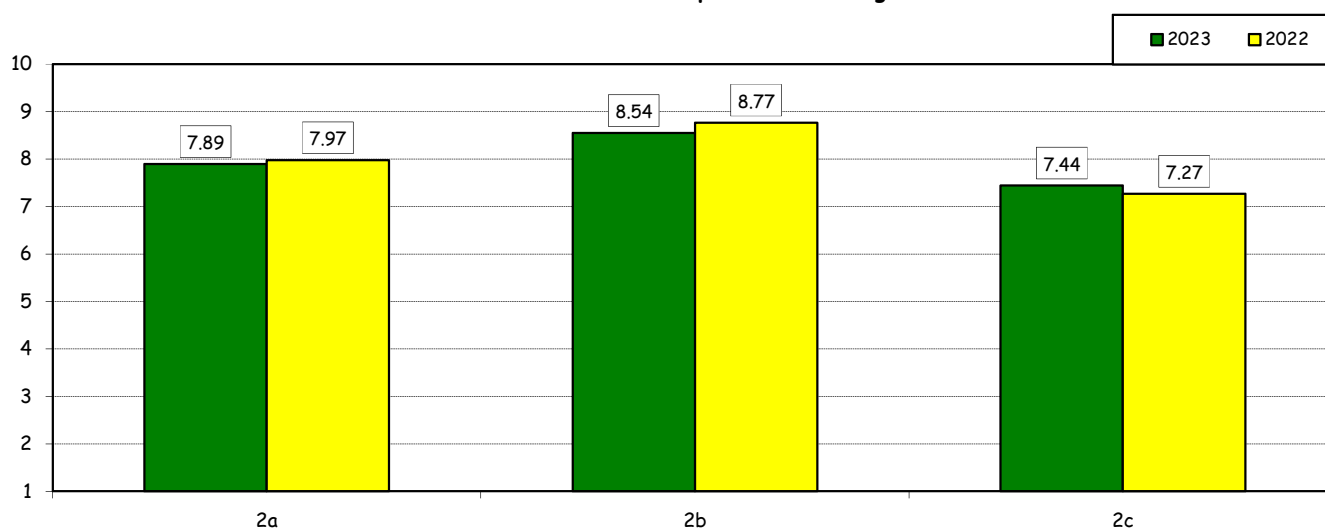


How would you evaluate:

(only A or B answers to item no.1)

Item	Answers	Negative				Positive				Total		N.A.
		1-2		3-4-5		6-7-8		9-10		a.v.	%	a.v.
		a.v.	%	a.v.	%	a.v.	%	a.v.	%			
2a) Quality and completeness of information provided (emails, brochures, International Relations Service web page, meetings)	1	0.9	7	6.2	64	56.6	41	36.3	113	100.0	1	
2b) The variety of programs offered.	0	0.0	5	4.5	48	42.9	59	52.7	112	100.0	2	
2c) The support you received from Bocconi before, during and after the experience abroad.	9	8.0	11	9.7	52	46.0	41	36.3	113	100.0	1	

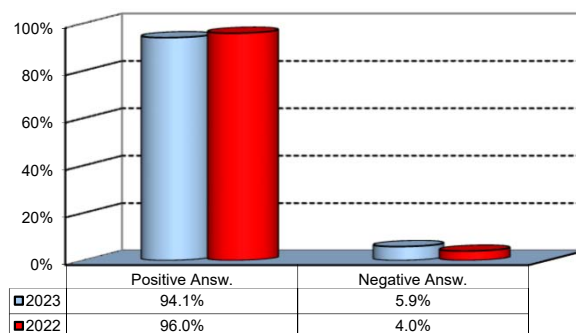
Over time comparison of average values



Experience Of Studying Abroad

3) Would you positively evaluate this experience?

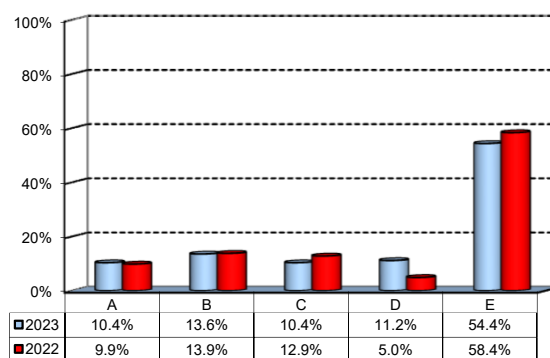
Answers	a.v.	%
A - Definitely YES	79	66.9%
B - More YES than NO	32	27.1%
C - More NO than YES	6	5.1%
D - Definitely NO	1	0.8%
Total	118	100%
NA	1	



(In case of answer "D" to item no.1)

4) Please indicate why you did not attend a period of study abroad (select all relevant reasons):

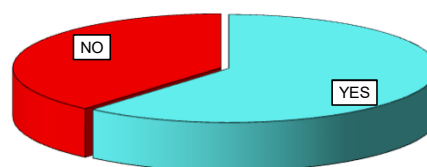
Answers	a.v.	%
A-Lack of interest in this kind of experience	13	10.4%
B-Absence of the requirements needed for participation in the program selected	17	13.6%
C-Rejection of your application	13	10.4%
D-Lack of time during the period of study	14	11.2%
E-Other (personal, family, organizational reasons, etc.)	68	54.4%
Total	125	100%
NA	4	



Internship Activities

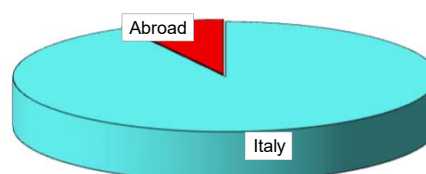
1) Did you attend an internship recognized by the Bachelor program?

	a.v.	2023	2022
YES	152	61.3%	61.4%
NO	96	38.7%	38.6%
Total	248	100%	100%
NA	0		



2) Where did you do the internship recognised by the Bachelor Program?

	a.v.	2023	2022
Italy	140	92.1%	90.2%
Abroad	12	7.9%	9.8%
Total	152	100%	100%
NA	0		



How would you evaluate:

(In case of answer "A" to item no.2)

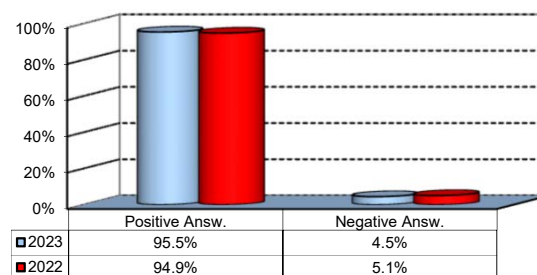
Item	Answers	Negative				Positive				Total		N.A.
		1-2		3-4-5		6-7-8		9-10		a.v.	%	a.v.
		a.v.	%	a.v.	%	a.v.	%	a.v.	%			
3a) The number and variety of opportunities offered		6	4.5	10	7.6	58	43.9	58	43.9	132	100.0	20
3b) The support you received from Bocconi		4	3.0	20	15.2	56	42.4	52	39.4	132	100.0	20

Over time comparison of average values



4) Would you positively evaluate this experience?

	a.v.	%
A - Definitely YES	79	59.8%
B - More YES than NO	47	35.6%
C - More NO than YES	5	3.8%
D - Definitely NO	1	0.8%
Total	132	100%
NA	20	

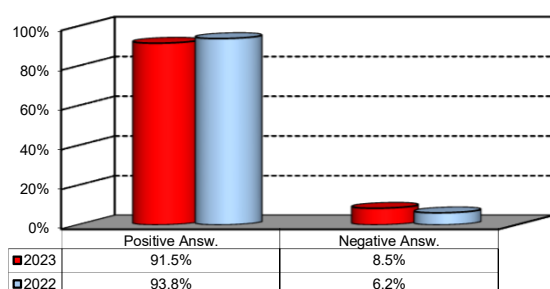


General satisfaction and short-term plans

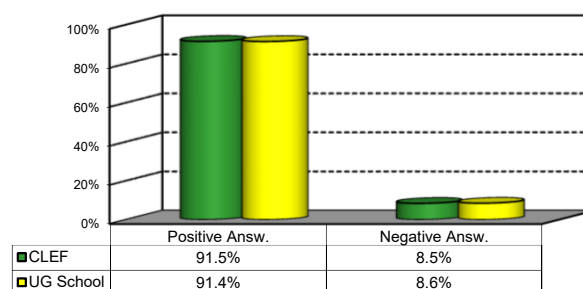
1) Are you satisfied overall with the study program you attended?

Answers	Italian School career		Int.nal School Career		Total	
	a.v.	%	a.v.	%	a.v.	%
A - Definitely YES	109	45.2%	3	42.9%	112	45.2%
B - More YES than NO	111	46.1%	4	57.1%	115	46.4%
C - More NO than YES	17	7.1%	0	0.0%	17	6.9%
D - Definitely NO	4	1.7%	0	0.0%	4	1.6%
Total	241	100%	7	100%	248	100%
NA	0		0		0	

Over time comparison



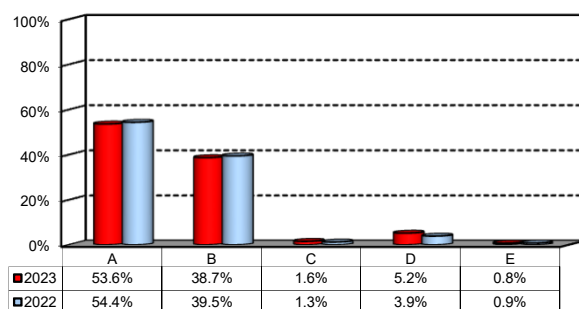
Comparison with the overall School data



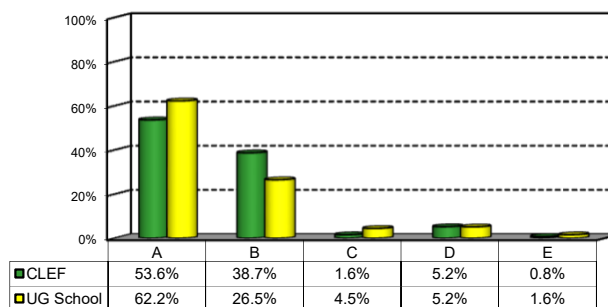
2a) If you could go back in time, would you enroll in the University again?

Answers	Italian School career		Int.nal School Career		Total	
	a.v.	%	a.v.	%	a.v.	%
A - YES, in the same Program at this University	130	53.9%	3	42.9%	133	53.6%
B - YES, in another Program at this University	92	38.2%	4	57.1%	96	38.7%
C - YES, in the same Program but at another University	4	1.7%	0	0.0%	4	1.6%
D - YES, in another Program at another University	13	5.4%	0	0.0%	13	5.2%
E - NO, I would not enrol in university anymore	2	0.8%	0	0.0%	2	0.8%
Total	241	100%	7	100%	248	100%
NA	0		0		0	

Over time comparison



Comparison with the overall School data



General satisfaction and short-term plans

(In case of answer "B" to item no.2a)

2b) Which program would you enroll in at this University?

Answers	Total	
	v.a.	%
BEMACS	8	9.0%
BIEF	59	66.3%
BIEM	4	4.5%
BIG	4	4.5%
CLEACC	1	1.1%
CLEAM	9	10.1%
CLEF	0	0.0%
CLES-BESS	3	3.4%
CLMG	1	1.1%
WBB	0	0.0%
Total	89	100%
NA	7	

(In case of answer "B", "C", "D" or "E" to item no.2a)

2c) Why would you make a different choice?

Answers	Italian School career		Int.nal School Career		Total		2022 %
	v.a.	%	v.a.	%	2023		
					v.a.	%	
A - My interest has changed over time / I discovered that I have different attitudes	38	34.5%	1	25.0%	39	34.2%	26.2%
B - The Bachelor program did not satisfy my expectations	9	8.2%	0	0.0%	9	7.9%	11.7%
C- I would have preferred to attend the same Bachelor program but taught in English	56	50.9%	3	75.0%	59	51.8%	48.5%
F - Other reasons	7	6.4%	0	0.0%	7	6.1%	13.6%
Total	110	100%	4	100%	114	100%	100%
NA	1		0		1		

F- Other reasons:

Because in this University there is no consideration of the student. That's very bad. The quality of teaching is definitely one of the best in Europe/World but you are treated like a number nothing less nothing more.

Differenza tra corso in inglese e in italiano estremamente impattante. Corsi in italiano nettamente piu' difficili.

e' stato un periodo molto stressante, forse anche per via del carico studio e della modalita' online che e' stata la modalita' utilizzata per la maggior parte del mio corso di studio. Mi sto appassionando di relazioni internazionali e di scienze politiche.

Il carico di stress a cui veniamo sottoposti dal primo giorno fa risultare l'esperienza poco sana ed equilibrata. I docenti sono piu' concentrati sul voto che sull'assimilazione e la comprensione dei concetti alla base dei vari corsi oggetti di studio.

il CLEF e' pieno di personaggi che non comprendono come non si tutto un gioco a somma zero

Il corso non ha rispecchiato le mie aspettative perche' mi ha lasciato un approccio troppo teorico e poco specifico sulla finanza. Inoltre, credo fermamente che CLEF sia inutilmente troppo complesso rispetto a BIEF.

Purtroppo mi aspettavo piu' matematica nel CLEF, tornando indietro mi iscriverei al BAI

Tornando indietro avrei sicuramente frequentato un corso in Inglese, probabilmente non finanza. L'ambiente nel corso di finanza non e' stato sicuramente d'aiuto a rendere l'esperienza in questa Universita' migliore. Troppa competizione non sana.

General satisfaction and short-term plans

3) In the near future do you intend to:

	Italian School career		Int.nal School Career		Total		2022 %
	a.v.	%	a.v.	%	2023 a.v.	%	
A- To go on with university studies at Bocconi (Master of Science, one-year Master of Science)	169	70.1%	5	71.4%	174	70.2%	66.1%
B-To go on with university studies at another Italian University	18	7.5%	0	0.0%	18	7.3%	4.4%
C- To go on with university studies abroad	42	17.4%	2	28.6%	44	17.7%	23.8%
D - To immediately look for a job	4	1.7%	0	0.0%	4	1.6%	3.1%
E - To accept a job proposal received	3	1.2%	0	0.0%	3	1.2%	2.2%
F - To continue to do the job started during this degree program	5	2.1%	0	0.0%	5	2.0%	0.4%
Total	241	100%	7	100%	248	100%	100%
NA	0		0		0		

4) If you intend to continue your university studies at another University (in Italy or abroad), what are the reasons for your choice? (multiple answers admitted)

	Italian School career		Int.nal School Career		Total		2022 %
	a.v.	%	a.v.	%	2023 a.v.	%	
A - I would like to attend a more prestigious university	16	15.4%	1	25.0%	17	15.7%	17.0%
B - I would like to build a strong international curriculum	37	35.6%	2	50.0%	39	36.1%	49.0%
C- I can not bear the cost of studies (tuition fees and cost of living)	9	8.7%	0	0.0%	9	8.3%	0.0%
D - I can not bear the cost of studies (tuition fees and cost of living)	9	8.7%	0	0.0%	9	8.3%	2.0%
E- The administrative services are not sufficiently efficient	4	3.8%	0	0.0%	4	3.7%	5.0%
F - I think that the contents of Bocconi's MSc programs do not differ much from those of undergraduate programs	9	8.7%	1	25.0%	10	9.3%	11.0%
G - Other reasons	20	19.2%	0	0.0%	20	18.5%	16.0%
Total	104	100%	4	100%	108	100%	100%
NA	0		0		0		

G - Other reasons:

ambiente universitario
Cerco un ambiente in cui la preparazione dello studente venga messa al primo posto, piuttosto che la reputazione dell'universita' o dei docenti. Parte dei docenti e' piu' concentrata ad autoelogiarsi per la propria carriera piuttosto che a far comprendere la materia agli studenti. Questa
Desidero frequentare un corso che non e' presente in Bocconi
Doppio Network
Il corso che ho scelto in un'altra universita' italiana ha un piano di studi che rispecchia di piu' i miei interessi
intendo iscrivermi in un'altra universita' per studiare in un ambiente meno competitivo
Media non sufficiente per sostenere magistrale di mio interesse in bocconi
mi sono trovato malissimo, non sono riuscito ad ambientarmi, sia all'universita' che in citta'
Miglior career service e maggiori opportunita' di lavoro, a parita' di prestigio
Migliori opportunita' lavorative offerte dall'universita' estera, a parita' di completezza e rigorosita' dal punto di vista accademico
Non c'e' un career service adeguato, il carico di studio e' eccessivo e le opportunita' internazionali sono troppo elitarie. Inoltre non e' possibile fare il corso cui uno e' interessato a meno che non abbia una gpa molto alta, pertanto studiare qualcosa che non mi interesserebbe

Non e' presente scienze statistiche in Bocconi
Non potevo iscrivermi alla magistrale in Bocconi che desideravo (Finanza)
Non sono pasato alla selezione delle magistrali in bocconi
Oltre al curriculum accademico e lavorativo, ho anche l'interesse a vivere un'esperienza universitaria in un'altra cultura.
Purtroppo non sono stato selezionato per proseguire il mio percorso in Bocconi con il corso di laurea che mi interessa maggiormente
Ricerca di un'esperienza differente
ritengo che alcune delle universita' europee posizionate in maniera simile nei ranking offrano un'esperienza piu' moderna (o meglio, meno anacronistica), soprattutto facendo riferimento alle modalita' di insegnamento.
Voglio trovare nuove motivazioni e stimoli all'estero
volonta' di continuare un percorso di studi coerente con la Triennale non avendo i requisiti per poterlo fare in Bocconi.