

## EVALUATION OF THE DEGREE PROGRAM AND THE UNIVERSITY EXPERIENCE

### BACHELOR IN ECONOMICS, MANAGEMENT AND COMPUTER SCIENCE Graduation year 2022

**N° QUESTIONNAIRES PROCESSED: 86**

**N° OF GRADUATE STUDENTS: 88**

**RESPONSE RATE: 97,7%**



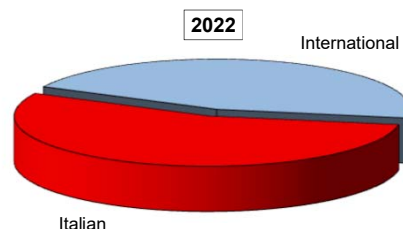
## EVALUATION OF STUDENT EXPERIENCE

### Bachelor of Science in Economics, Management and Computer Science

#### General information

##### School Career

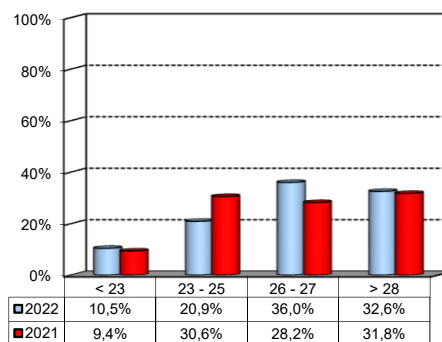
Answers	a.v.	%	%
		2022	2021
Italian	47	54,7%	61,2%
International	39	45,3%	38,8%
<b>Total</b>	<b>86</b>	<b>100%</b>	<b>100%</b>
NA	0		



##### Average mark of the exams passed:

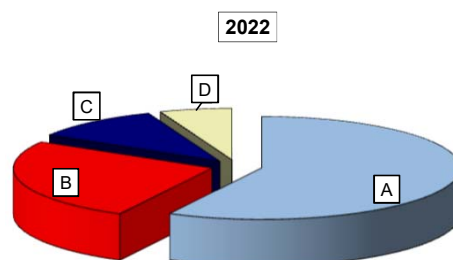
(approximate average expressed in 30/30)

Answers	a.v.	%
< 23	9	10,5%
23 - 25	18	20,9%
26 - 27	31	36,0%
> 28	28	32,6%
<b>Total</b>	<b>86</b>	<b>100%</b>
NA	0	



##### How many of the courses included in your curriculum did you attend regularly?

Answers	a.v.	%	%
		2022	2021
A - More than 75%	49	57,6%	71,8%
B - Between 50 and 75%	22	25,9%	21,2%
C - Between 25 and 50%	9	10,6%	4,7%
D - Less than 25%	5	5,9%	2,4%
<b>Total</b>	<b>85</b>	<b>100%</b>	<b>100%</b>
NA	1		

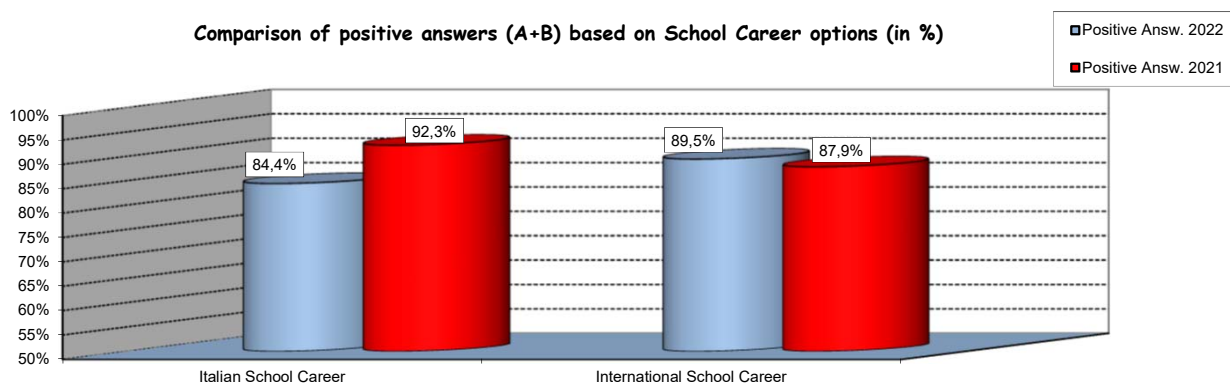


## Study experience

1) Was the knowledge acquired during secondary school adequate to undertake your Bachelor program?

Answers	Italian School Career		International School Career		Total	
	a.v.	%	a.v.	%	a.v.	%
A - Definitely YES	21	46,7%	16	42,1%	37	44,0%
B - More YES than NO	17	37,8%	18	47,4%	35	41,7%
C - More NO than YES	7	15,6%	5	13,2%	12	14,3%
D - Definitely NO	0	0,0%	0	0,0%	0	0,0%
<b>Total</b>	<b>45</b>	<b>100%</b>	<b>39</b>	<b>103%</b>	<b>84</b>	<b>100%</b>
NA	2		0		2	

Comparison of positive answers (A+B) based on School Career options (in %)

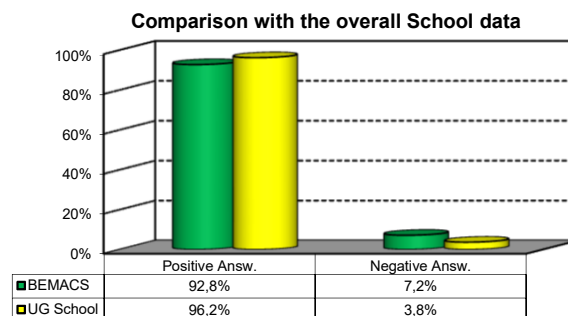
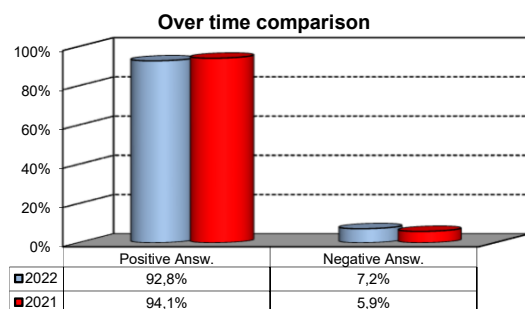


2) if you answered "More NO than YES" or "Definitely NO", indicate the subject or the subjects for which your previous knowledge was revealed to be insufficient:

	a.v.	%
ADVANCED MATHEMATICS AND STATISTICS	11	37,9%
COMPUTER PROGRAMMING	5	17,2%
Other	13	44,8%
<b>Total</b>	<b>29</b>	<b>100%</b>

3) On the whole, do you appreciate the qualifications you acquired at the end of the Bachelor program at Bocconi?

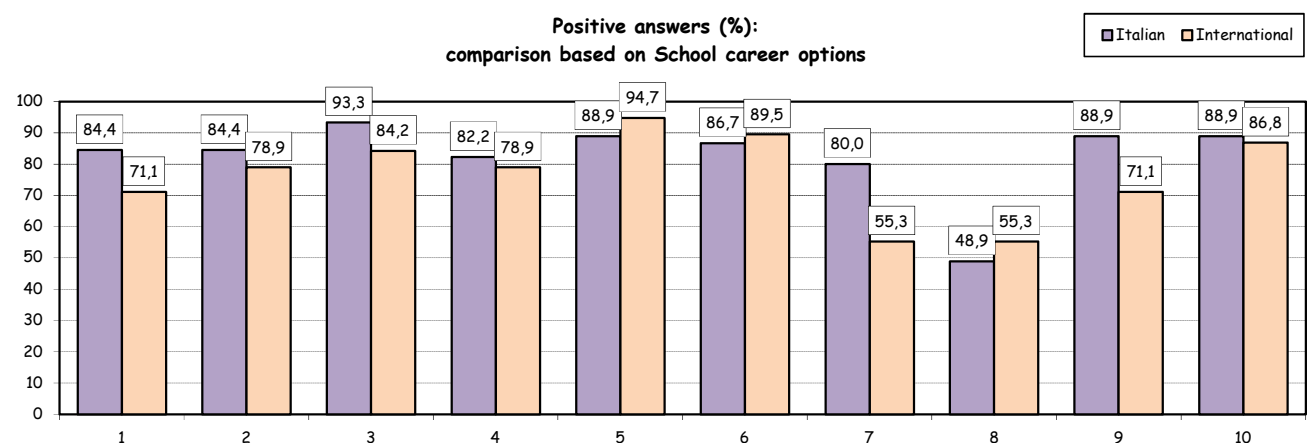
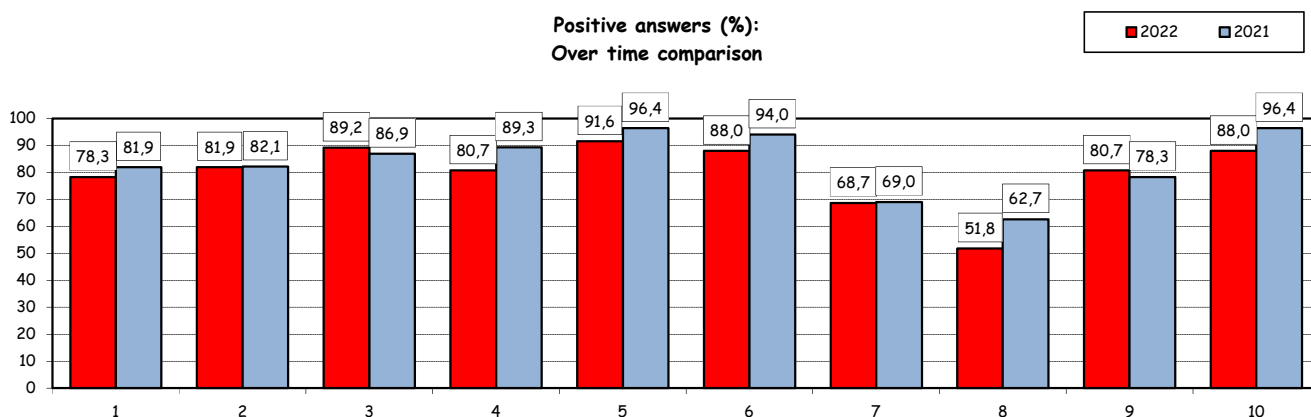
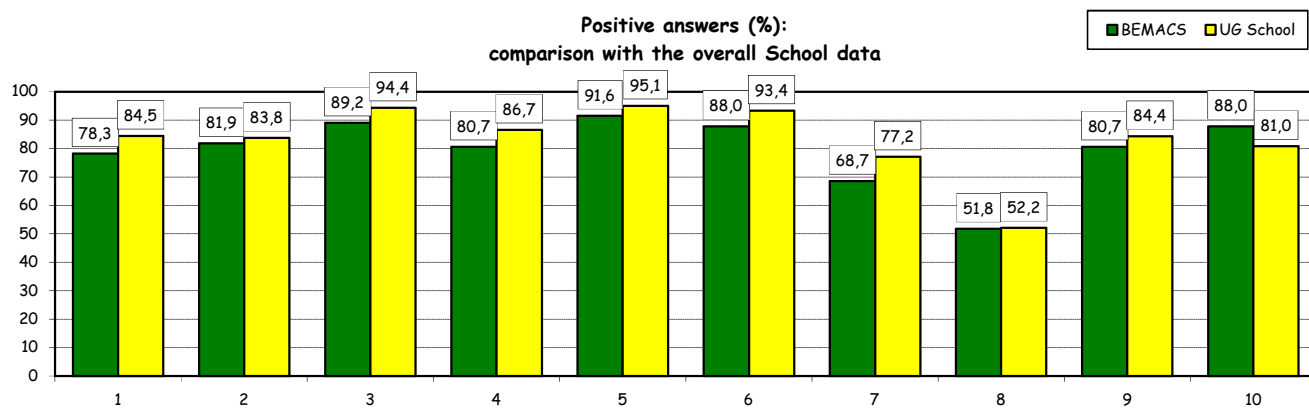
Aswers	Italian school Career		Int.nal School Career		Total	
	v.a.	%	v.a.	%	v.a.	%
A - Definitely YES	25	55,6%	19	50,0%	44	53,0%
B - More YES than NO	18	40,0%	15	39,5%	33	39,8%
C - More NO than YES	1	2,2%	4	10,5%	5	6,0%
D - Definitely NO	1	2,2%	0	0,0%	1	1,2%
<b>Total</b>	<b>45</b>	<b>100%</b>	<b>38</b>	<b>100%</b>	<b>83</b>	<b>100%</b>
NA	2		1		3	



## Study experience

4) Do you think that your course of study at Bocconi has contributed to the development of the following skills?

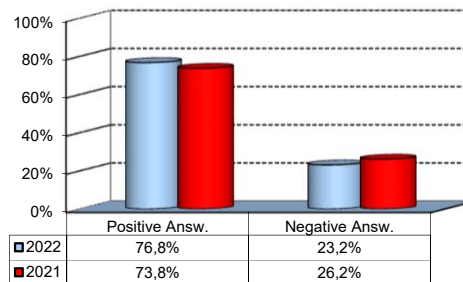
Soft Skill	Item	Definitely YES		More YES than NO		More NO than YES		Definitely NO		Total		n.a.
		a.v.	%	a.v.	%	a.v.	%	a.v.	%	a.v.	%	a.v.
1	Ability to work on a team	33	39,8	32	38,6	17	20,5	1	1,2	83	100,0	3
2	Interpersonal skills	29	34,9	39	47,0	14	16,9	1	1,2	83	100,0	3
3	Organizational skills	44	53,0	30	36,1	9	10,8	0	0,0	83	100,0	3
4	Critical thinking skills	39	47,0	28	33,7	14	16,9	2	2,4	83	100,0	3
5	Ability to analyze and select information	50	60,2	26	31,3	7	8,4	0	0,0	83	100,0	3
6	Problem-solving ability	46	55,4	27	32,5	10	12,0	0	0,0	83	100,0	3
7	Written communication skills	30	36,1	27	32,5	22	26,5	4	4,8	83	100,0	3
8	Verbal communication skills	17	20,5	26	31,3	29	34,9	11	13,3	83	100,0	3
9	Ability to cope with stress	36	43,4	31	37,3	12	14,5	4	4,8	83	100,0	3
10	Computer Skills	54	65,1	19	22,9	10	12,0	0	0,0	83	100,0	3



## Study experience

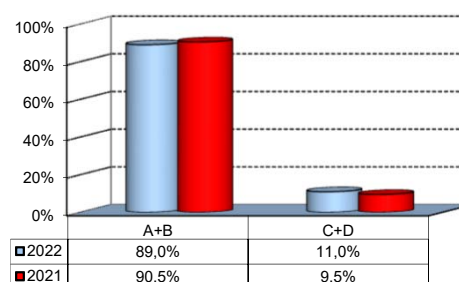
5) Do you think that the courses in your curriculum were adequately coordinated with each other?

	a. v.	%
A - Definitely YES	20	24,4%
B - More YES than NO	43	52,4%
C - More NO than YES	13	15,9%
D - Definitely NO	6	7,3%
<b>Total</b>	<b>82</b>	<b>100%</b>
NA	4	



6a) Do you think that the overall study load was compatible with the length of the program?

	a. v.	%
A - Definitely YES	25	30,5%
B - More YES than NO	48	58,5%
C - More NO than YES	8	9,8%
D - Definitely NO	1	1,2%
<b>Total</b>	<b>82</b>	<b>100%</b>
NA	4	



6b) Specifically, do you believe that the study load was excessive or insufficient?

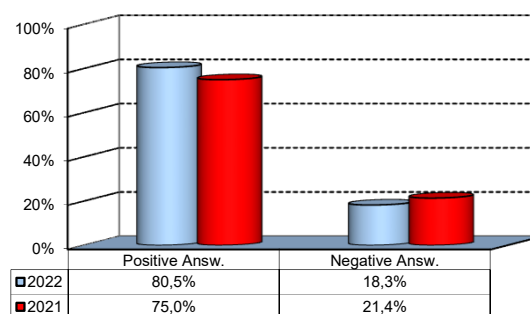
(In case of answer "C" and "D" to item no.6a)

	a. v.	2022%	2021%
Excessive	7	100,0%	87,5%
Insufficient	0	0,0%	12,5%
<b>Total</b>	<b>7</b>	<b>2122%</b>	<b>100%</b>
NA	2		

## Final Report

1) Do you think that the supervision and assistance for preparing for your final report (internship report, final paper or other) were adequate?

	a. v.	%
A - Definitely YES	35	42,7%
B - More YES than NO	31	37,8%
C - More NO than YES	13	15,9%
D - Definitely NO	2	2,4%
E - Supervision was not expected	1	1,2%
<b>Total</b>	<b>82</b>	<b>100%</b>
NA	4	

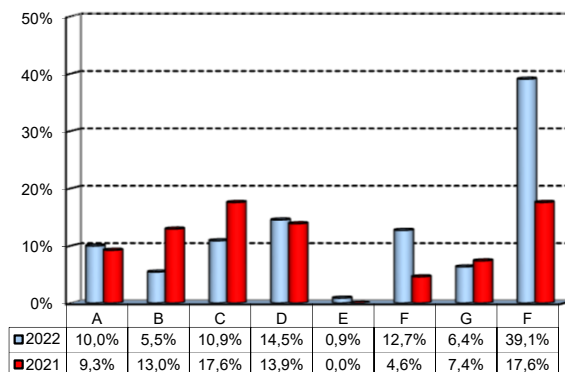


## Extracurricular Activities

1) Which of the following extracurricular activities did you attend during the Bachelor Program?

(multiple answers admitted)

	a.v.	%
A - Interdisciplinary courses ("Sapere a tutto campo")	11	10,0%
B - Counseling and Self-Empowerment courses (CSE)	6	5,5%
C - Cultural Activities (visit museums, concerts, theatre and cinema, various issues)	12	10,9%
D - Sport activities	16	14,5%
E - Wellbeing courses	1	0,9%
F - IT Education Center courses (ITEC)	14	12,7%
G - Language Center courses	7	6,4%
H - None	43	39,1%
<b>Total</b>	<b>110</b>	<b>100%</b>
NA	0	

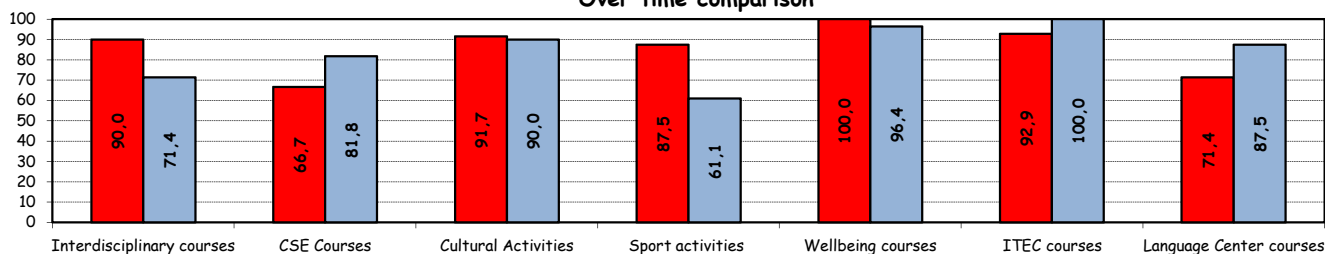


2) Do you think that the activities you took part in contributed to your cultural/educational enrichment?

	Definitely YES		More YES than NO		More NO than YES		Definitely NO		Total		NA
	a.v.	%	a.v.	%	a.v.	%	a.v.	%	a.v.	%	a.v.
A - Interdisciplinary courses	4	40,0	5	50,0	1	10,0	0	0,0	10	100,0	1
B - CSE courses	0	0,0	4	66,7	1	16,7	1	16,7	6	100,0	0
C - Cultural Activities	6	50,0	5	41,7	1	8,3	0	0,0	12	100,0	0
D - Sport activities	10	62,5	4	25,0	1	6,3	1	6,3	16	100,0	0
E - Wellbeing courses	1	100,0	0	0,0	0	0,0	0	0,0	1	100,0	0
F - ITEC courses	7	50,0	6	42,9	0	0,0	1	7,1	14	100,0	0
G - Language Center courses	1	14,3	4	57,1	2	28,6	0	0,0	7	100,0	0

Positive answers (%):  
Over time comparison

■ 2022 ■ 2021

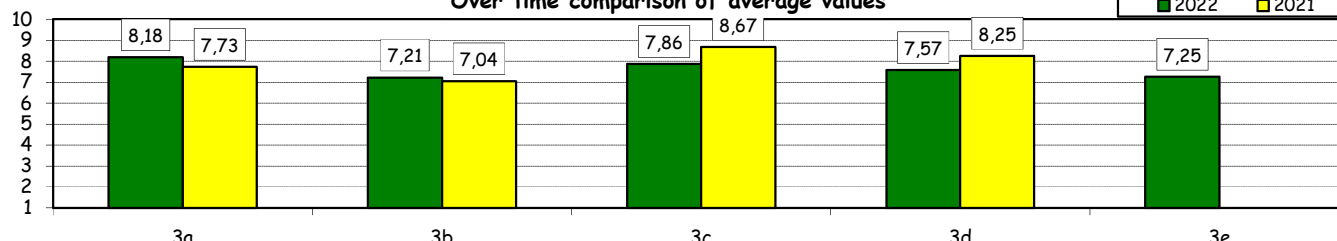


How would you evaluate:

Item	Negative				Positive				Total		NA
	1-2		3-4-5		6-7-8		9-10		a.v.	%	
Answers	a.v.	%	a.v.	%	a.v.	%	a.v.	%	a.v.	%	
3a) The range of and interest in the programmes offered	1	2,6	1	2,6	19	48,7	18	46,2	39	100,0	4
3b) The support you received from the Campus Life Office	4	10,5	2	5,3	20	52,6	12	31,6	38	100,0	5
3c) The support you received from ITEC	1	7,1	0	0,0	8	57,1	5	35,7	14	100,0	0
3d) The support you received from Language Center	1	14,3	0	0,0	2	28,6	4	57,1	7	100,0	0
3e) The support you received from Bocconi Sport Teams	1	6,3	1	6,3	9	56,3	5	31,3	16	100,0	0

Over time comparison of average values

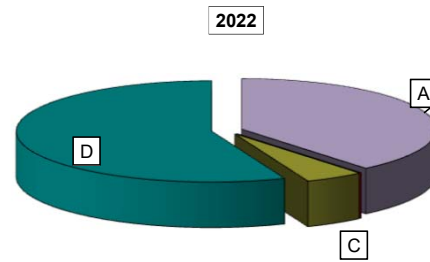
■ 2022 ■ 2021



## Experience Of Studying Abroad

### 1) Type of experience:

Answers	a.v.	%	
		2022	2021
A - Exchange Programme	32	39,0%	8,3%
B - Double Degree	0	0,0%	0,0%
C - Free-Mover	4	4,9%	0,0%
D - None	46	56,1%	91,7%
<b>Total</b>	<b>82</b>	<b>100%</b>	<b>100%</b>
NA	4		

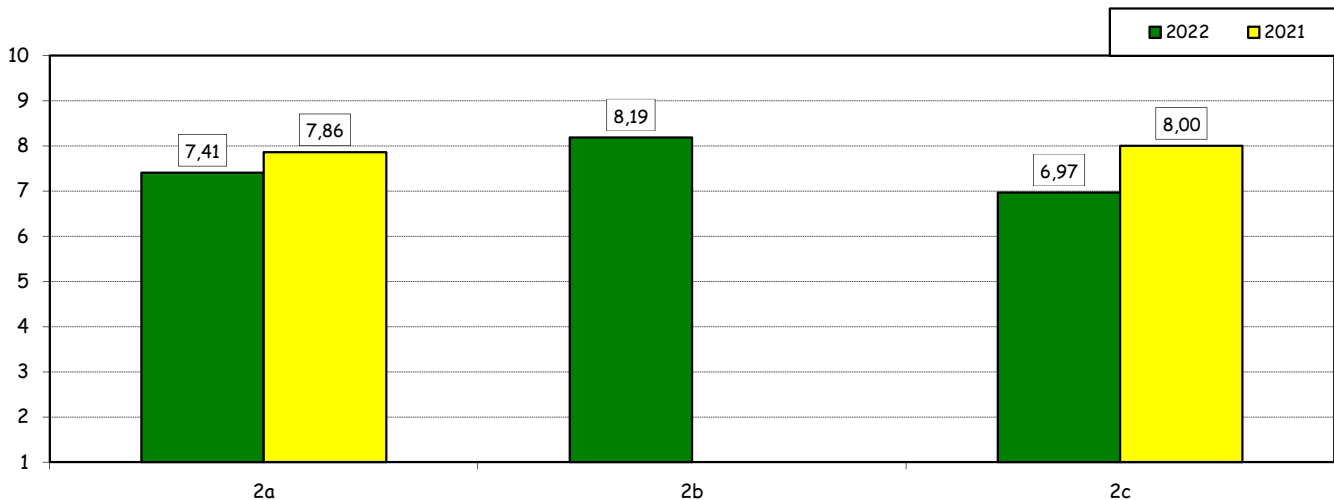


### How would you evaluate:

(only A or B answers to item no.1)

Item	Answers	Negative				Positive				Total		N.A.
		1-2		3-4-5		6-7-8		9-10		a.v.	%	a.v.
		a.v.	%	a.v.	%	a.v.	%	a.v.	%	a.v.	%	a.v.
2a) Quality and completeness of information provided (emails, brochures, International Relations Service web page, meetings)		1	3,1	4	12,5	17	53,1	10	31,3	32	100,0	0
2b) The variety of programs offered.		1	3,1	0	0,0	16	50,0	15	46,9	32	100,0	0
2c) The support you received from Bocconi before, during and after the experience abroad.		2	6,3	7	21,9	11	34,4	12	37,5	32	100,0	0

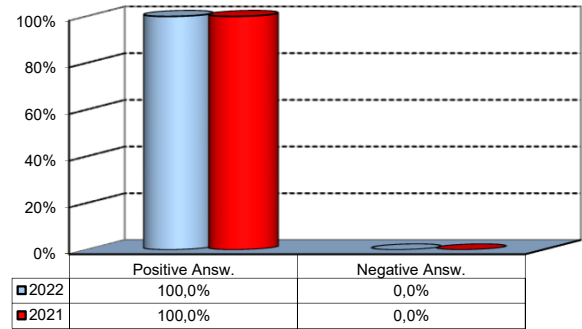
### Over time comparison of average values



## Experience Of Studying Abroad

3) Would you positively evaluate this experience?

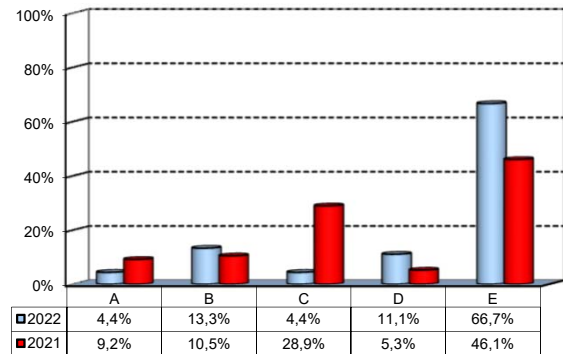
Answers	a.v.	%
A - Definitely YES	28	77,8%
B - More YES than NO	8	22,2%
C - More NO than YES	0	0,0%
D - Definitely NO	0	0,0%
<b>Total</b>	<b>36</b>	<b>100%</b>
NA	0	



(In case of answer "D" to item no.1)

4) Please indicate why you did not attend a period of study abroad (select all relevant reasons):

Answers	a.v.	%
A-Lack of interest in this kind of experience	2	4,4%
B-Absence of the requirements needed for participation in the program selected	6	13,3%
C-Rejection of your application	2	4,4%
D-Lack of time during the period of study	5	11,1%
E-Other (personal, family, organizational reasons, etc.)	30	66,7%
<b>Total</b>	<b>45</b>	<b>100%</b>
NA	1	

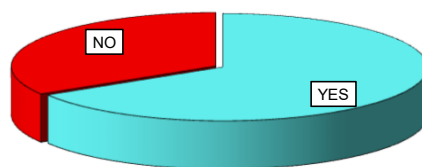




## Internship Activities

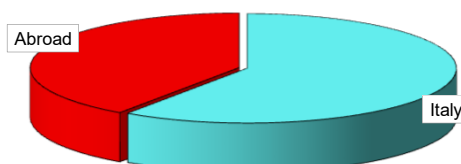
1) Did you attend an internship recognized by the Bachelor program?

	a.v.	2022	2021
YES	57	66,3%	54,8%
NO	29	33,7%	45,2%
<b>Total</b>	<b>86</b>	<b>100%</b>	<b>100%</b>
NA	0		



2) Where did you do the internship recognized by the Bachelor Program?

	a.v.	2022	2021
Italy	34	59,6%	58,7%
Abroad	23	40,4%	41,3%
<b>Total</b>	<b>57</b>	<b>100%</b>	<b>100%</b>
NA	0		



How would you evaluate:

(In case of answer "A" to item no.2)

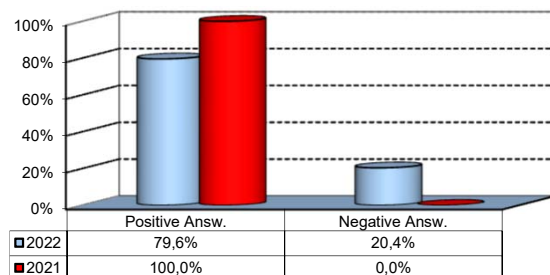
Item	Answers	Negative				Positive				Total	N.A.
		1-2		3-4-5		6-7-8		9-10			
		a.v.	%	a.v.	%	a.v.	%	a.v.	%		
3a) The number and variety of opportunities offered	3	6,0	11	22,0	20	40,0	16	32,0	50	100,0	7
3b) The support you received from Bocconi*	3	8,3	8	22,2	15	41,7	10	27,8	36	100,0	1

Over time comparison of average values



4) Would you positively evaluate this experience?

	a.v.	%
A - Definitely YES	21	42,9%
B - More YES than NO	18	36,7%
C - More NO than YES	10	20,4%
D - Definitely NO	0	0,0%
<b>Total</b>	<b>49</b>	<b>100%</b>
NA	8	



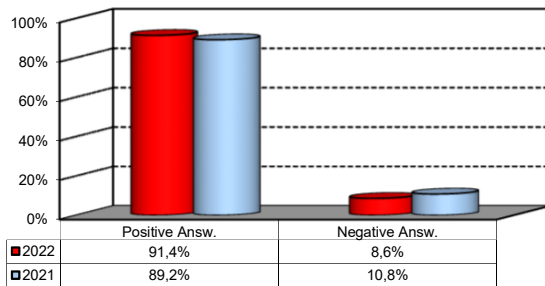
(\*): From this year, this item is submitted to all the interns who have formalized their experience through university services. The value collected in this way is more suitable to the aim of monitoring and improving the service. On the other hand, it cannot be compared with the one collected the previous year.

## General satisfaction and short-term plans

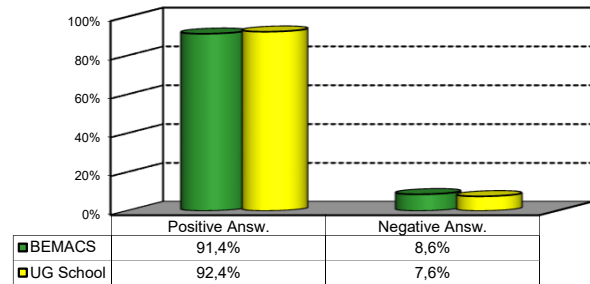
1) Are you satisfied overall with the study program you attended?

Answers	Italian School career		Int.nal School Career		Total	
	a.v.	%	a.v.	%	a.v.	%
A - Definitely YES	26	57,8%	16	44,4%	42	51,9%
B - More YES than NO	16	35,6%	16	44,4%	32	39,5%
C - More NO than YES	3	6,7%	4	11,1%	7	8,6%
D - Definitely NO	0	0,0%	0	0,0%	0	0,0%
<b>Total</b>	<b>45</b>	<b>100%</b>	<b>36</b>	<b>100%</b>	<b>81</b>	<b>100%</b>
NA	2		3		5	

Over time comparison



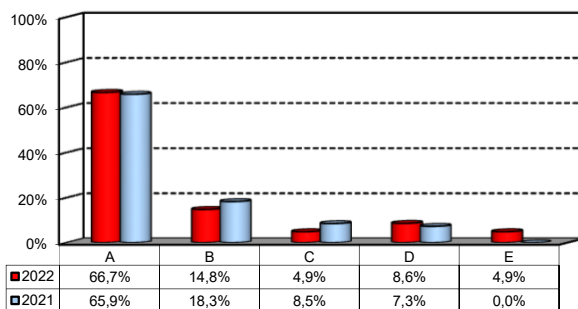
Comparison with the overall School data



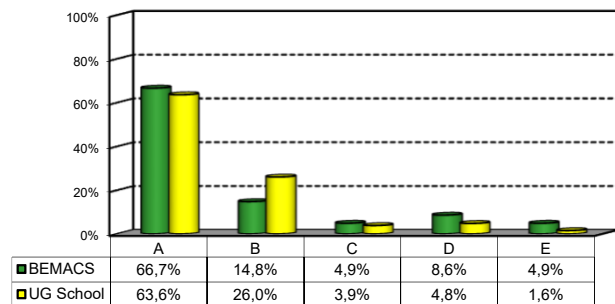
2a) If you could go back in time, would you enroll in the University again?

Answers	Italian School career		Int.nal School Career		Total	
	a.v.	%	a.v.	%	a.v.	%
A - YES, in the same Bachelor Program at this University	35	77,8%	19	52,8%	54	66,7%
B - YES, in another Program at this University	6	13,3%	6	16,7%	12	14,8%
C - YES, in the same Program but at another University	1	2,2%	3	8,3%	4	4,9%
D - YES, in another Program at another University	2	4,4%	5	13,9%	7	8,6%
E - NO, I would not enrol in university anymore	1	2,2%	3	8,3%	4	4,9%
<b>Total</b>	<b>45</b>	<b>100%</b>	<b>36</b>	<b>100%</b>	<b>81</b>	<b>100%</b>
NA	2		3		5	

Over time comparison



Comparison with the overall School data



## General satisfaction and short-term plans

(In case of answer "B", "C", "D" or "E" to item no.2a)

### 2b) Why would you make a different choice?

Answers	Italian School career		Int.nal School Career		Total		2021 %
	v.a.	%	v.a.	%	2022 v.a.	%	
A - My interest has changed over time / I discovered that I have different attitudes	5	50,0%	10	58,8%	15	55,6%	52,2%
B - The Bachelor program did not satisfy my expectations	4	40,0%	4	23,5%	8	29,6%	21,7%
C- I would have preferred to attend the same Bachelor program but taught in English	0	0,0%	0	0,0%	0	0,0%	0,0%
F - Other reasons	1	10,0%	3	17,6%	4	14,8%	26,1%
<b>Total</b>	<b>10</b>	<b>100%</b>	<b>17</b>	<b>100%</b>	<b>27</b>	<b>100%</b>	<b>100%</b>
NA	2		3		5		

#### F- Other reasons:

A combination of both, matter of interest in the course and also would have wanted to do something specialised as in DS where its just DS rather than blend of multiple things. The overall course was really good here at bocconi but not too specific!

Poor organisation of University services, for example with online platform, fee collections, and exchange processes, as well as a limited undergraduate student campus when considering the fees paid.

## General satisfaction and short-term plans

### 3) In the near future do you intend to:

	Italian School career		Int.nal School Career		Total		2021 %
	a.v.	%	a.v.	%	2022 a.v.	%	
A- To go on with university studies at Bocconi (Master of Science, one-year Master of Science)	20	44,4%	5	13,9%	25	30,9%	40,2%
B- To go on with university studies at another Italian University	1	2,2%	0	0,0%	1	1,2%	2,4%
C- To go on with university studies abroad	18	40,0%	11	30,6%	29	35,8%	39,0%
D - To immediately look for a job	2	4,4%	7	19,4%	9	11,1%	8,5%
E - To accept a job proposal received	2	4,4%	10	27,8%	12	14,8%	4,9%
F - To continue to do the job started during this degree program	2	4,4%	3	8,3%	5	6,2%	4,9%
<b>Total</b>	<b>45</b>	<b>100%</b>	<b>36</b>	<b>100%</b>	<b>81</b>	<b>100%</b>	<b>100%</b>
NA	2		3		5		

### 4) If you intend to continue your university studies at another University (in Italy or abroad), what are the reasons for your choice? (multiple answers admitted)

	Italian School career		Int.nal School Career		Total		2021 %
	a.v.	%	a.v.	%	2022 a.v.	%	
A - I would like to attend a more prestigious university	10	27,0%	5	23,8%	15	25,9%	18,0%
B - I would like to build a strong international curriculum	16	43,2%	5	23,8%	21	36,2%	48,0%
C- I can not bear the cost of studies (tuition fees and cost of living)	1	2,7%	0	0,0%	1	1,7%	0,0%
D - I can not bear the cost of studies (tuition fees and cost of living)	2	5,4%	1	4,8%	3	5,2%	2,0%
E- The administrative services are not sufficiently efficient	0	0,0%	2	9,5%	2	3,4%	2,0%
F - I think that the contents of Bocconi's MSc programs do not differ much from those of undergraduate programs	6	16,2%	4	19,0%	10	17,2%	12,0%
G - Other reasons	2	5,4%	4	19,0%	6	10,3%	18,0%
<b>Total</b>	<b>37</b>	<b>100%</b>	<b>21</b>	<b>100%</b>	<b>58</b>	<b>100%</b>	<b>100%</b>
NA	0		0		0		

#### G - Other reasons:

Dopo l'esperienza BEMACS mi sono sentito che DSBA non avrebbe aggiunto molto al mio bagaglio di data scientist. Il problema stava in corsi un pò più tecnici, come ad esempio corsi specifici nella computer vision o nel natural language

Non sono stato selezionato per alcun master di mio interesse nel precedente anno accademico

The Data Science MSc I was interested in has too many useless courses I have no interest in taking that have nothing to do with actual Data Science

The work opportunities available to international students in Italy are quite underwhelming and limited and as non EU it's quite stressful to find opportunities elsewhere in the EU either! Moreover, the cost of living in Milan is also quite similar to other places in Europe which provide better opportunities to the international students like Berlin for instance

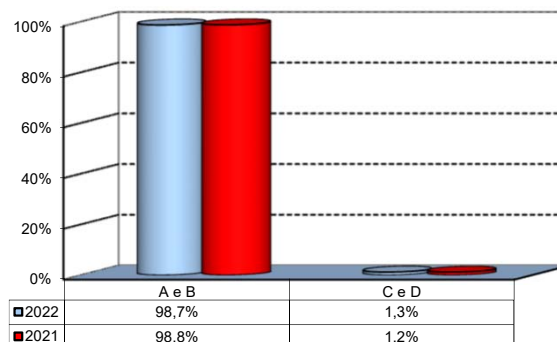
To experience a new country and follow a degree I am interested in (was not admitted into the Bocconi Masters)

While I've thoroughly enjoyed my time at Bocconi in Milan, I'd like to experience a new place and culture.

## Infrastructure: Classrooms, Library And Facilities

1) What is your opinion about the classrooms where lessons and other teaching activities have been held?\*

Answers	a.v.	%
A - Always or nearly always adequate	59	72,8%
B - Often adequate	19	23,5%
C - Rarely adequate	1	1,2%
D - Never adequate	0	0,0%
E - I did not use them	2	2,5%
<b>Total</b>	<b>81</b>	<b>100%</b>
NA	5	

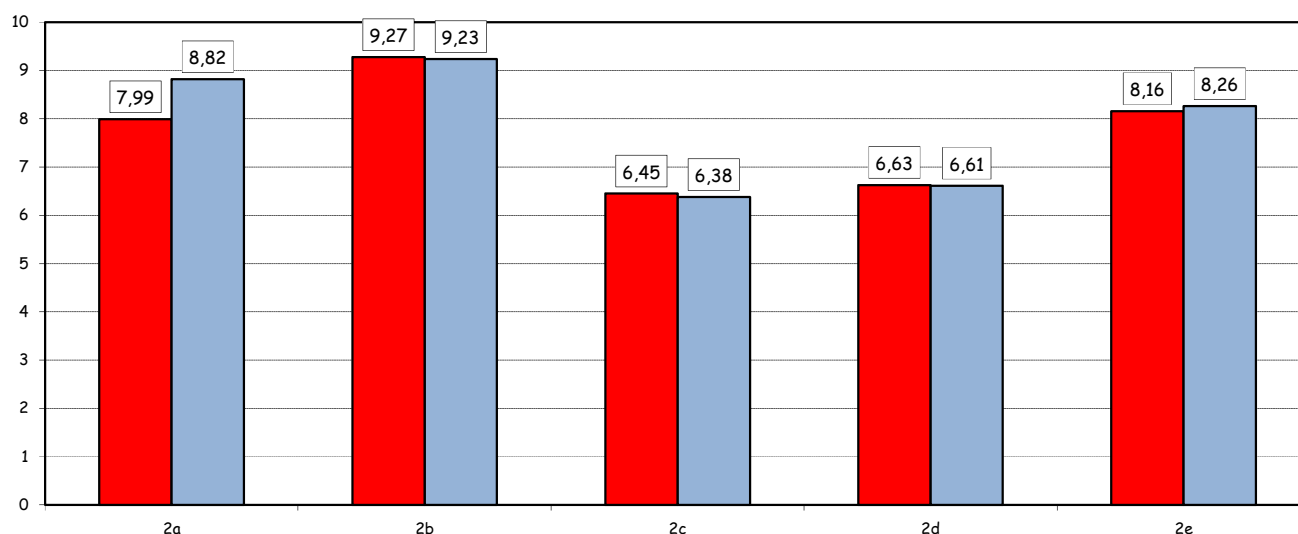


2) How would you evaluate:

Item	Answers	Negative				Positive				Total		N.R.
		1-2		3-4-5		6-7-8		9-10		a.v.	%	
		a.v.	%	a.v.	%	a.v.	%	a.v.	%			
a) The adequacy of the audio and multimedia systems (e.g. instructor's computer, projectors, video players) installed in the classrooms		2	2,3	4	4,7	40	46,5	40	46,5	86	100,0	0
b) The cleanliness of classrooms and of other common areas on campus (corridors, halls, study rooms)		0	0,0	1	1,2	14	17,3	66	81,5	81	100,0	5
c) The adequacy of the amount of areas/seats reserved to individual study in the University Library		10	12,8	18	23,1	25	32,1	25	32,1	78	100,0	8
d) The adequacy of the amount of areas/seats reserved to individual study in other buildings on campus		8	10,0	19	23,8	26	32,5	27	33,8	80	100,0	6
e) The clarity and adequacy of the signage system on campus		0	0,0	10	13,0	26	33,8	41	53,2	77	100,0	9

Over time comparison of average values

■ 2022 ■ 2021

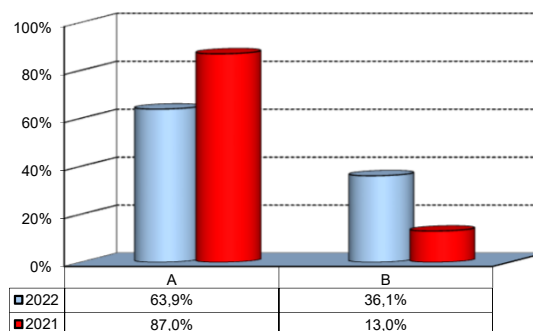


(\*): the percentage shown on the graphs is calculated by excluding the responses of those who declare that they have not used the service.

## Infrastructure: Classrooms, Library And Facilities

3) What is your overall opinion on the PC Labs and IT facilities provided by the University?\*

Answers	a.v.	%
A- Adequate in number	23	28,4%
B- Inadequate in number	13	16,0%
C- Never used	45	55,6%
<b>Total</b>	<b>81</b>	<b>100%</b>
NA	5	

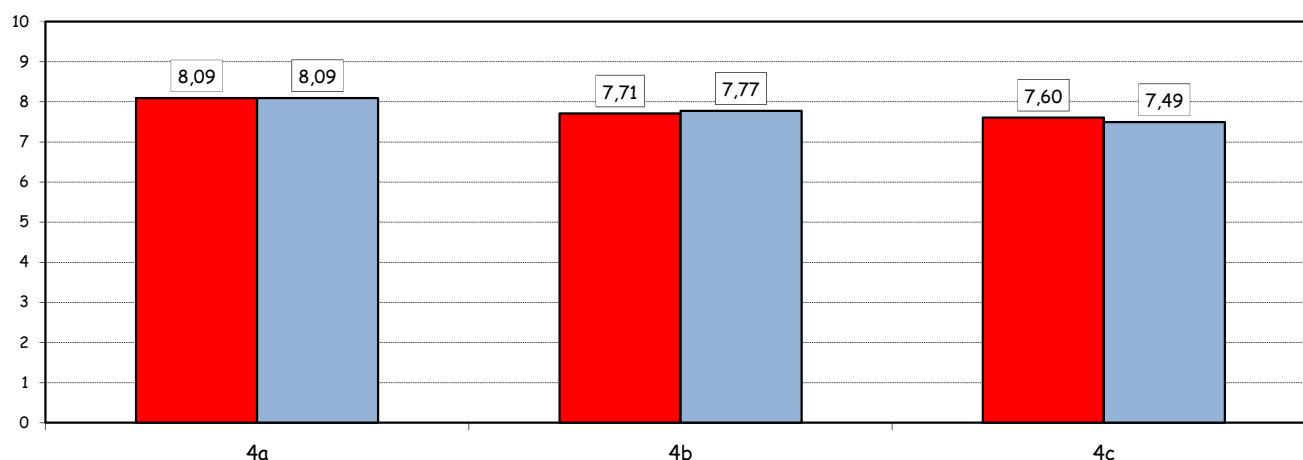


4) How would you evaluate:

Item	Answers	Negative				Positive				Total		NA
		1-2		3-4-5		6-7-8		9-10		a.v.	%	
		a.v.	%	a.v.	%	a.v.	%	a.v.	%			
a) The availability of technical staff supporting students (Tutors) in PC Labs <sup>^</sup>		0	0,0	5	14,3	14	40,0	16	45,7	35	100,0	1
b) The convenience of the PC Labs' opening hours <sup>^</sup>		1	2,9	5	14,7	14	41,2	14	41,2	34	100,0	2
c) The level of accessibility and usability of the University's IT services (Internet access points, Punto Blu, Virtual Punto Blu, wireless connection)		3	3,7	6	7,4	39	48,1	33	40,7	81	100,0	5

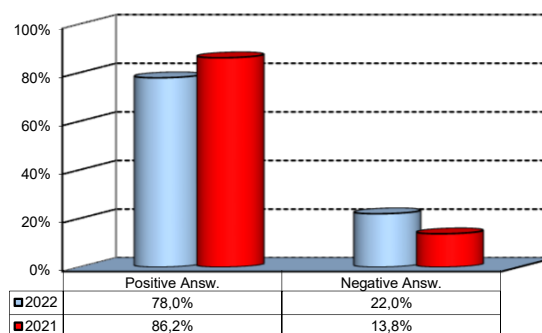
Over time comparison of average values

■ 2022 ■ 2021



5) What is your overall opinion on the Library's services, such as support for individual study?\*

Answers	a.v.	%
A - Very Positive	18	22,2%
B - Quite positive	28	34,6%
C - Quite negative	10	12,3%
D - Very Negative	3	3,7%
E - Never used	22	27,2%
<b>Total</b>	<b>81</b>	<b>100%</b>
NA	5	



(<sup>^</sup>): Only in case of answer "A" or "B" to item no.3

(\*): the percentage shown on the graphs is calculated by excluding the responses of those who declare that they have not used the service.