

**EVALUATION OF
THE DEGREE PROGRAM AND THE
UNIVERSITY EXPERIENCE**

**BACHELOR IN
INTERNATIONAL POLITICS AND
GOVERNMENT
Graduation year 2022**

N° QUESTIONNAIRES PROCESSED: 76

N° OF GRADUATE STUDENTS: 85

RESPONSE RATE: 89,4%



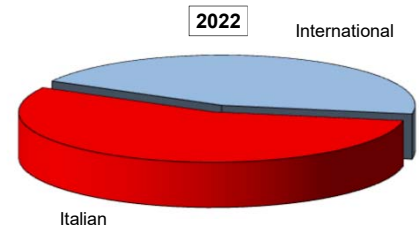
EVALUATION OF STUDENT EXPERIENCE

Bachelor of Science in International Politics and Government

General information

School Career

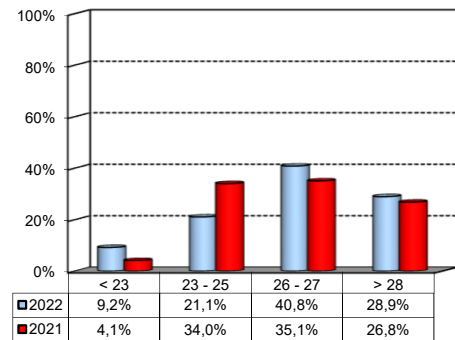
Answers	a.v.	%	
		2022	2021
Italian	42	55,3%	68,0%
International	34	44,7%	32,0%
Total	76	100%	100%
NA	0		



Average mark of the exams passed:

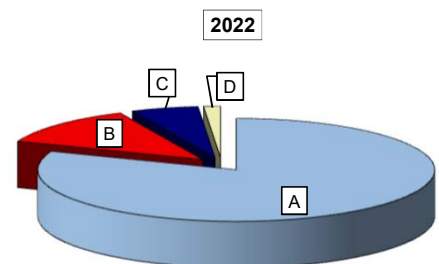
(approximate average expressed in 30/30)

Answers	a.v.	%
< 23	7	9,2%
23 - 25	16	21,1%
26 - 27	31	40,8%
> 28	22	28,9%
Total	76	100%
NA	0	



How many of the courses included in your curriculum did you attend regularly?

Answers	a.v.	%	
		2022	2021
A - More than 75%	59	80,8%	79,4%
B - Between 50 and 75%	9	12,3%	19,6%
C - Between 25 and 50%	4	5,5%	0,0%
D - Less than 25%	1	1,4%	1,0%
Total	73	100%	100%
NA	3		

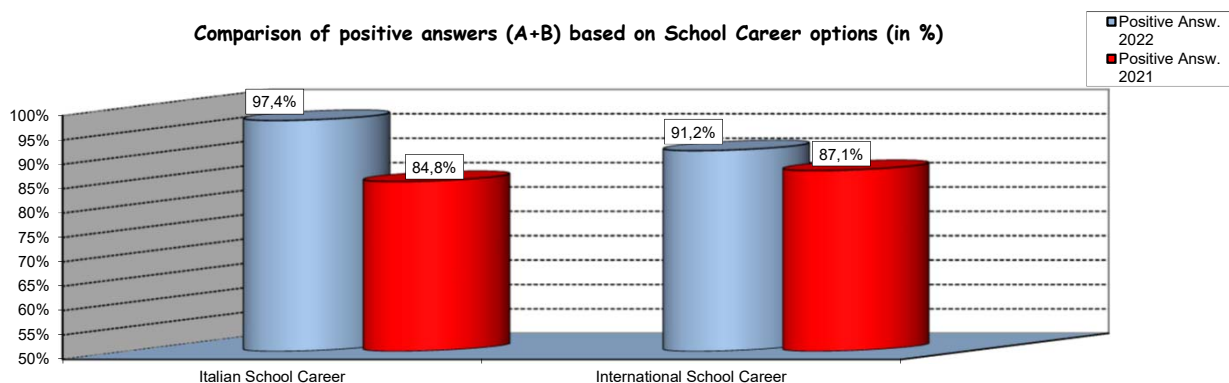


Study experience

1) Was the knowledge acquired during secondary school adequate to undertake your Bachelor program?

Answers	Italian School Career		International School Career		Total	
	a.v.	%	a.v.	%	a.v.	%
A - Definitely YES	24	63,2%	18	52,9%	42	57,5%
B - More YES than NO	13	34,2%	13	38,2%	26	35,6%
C - More NO than YES	2	5,3%	3	8,8%	5	6,8%
D - Definitely NO	0	0,0%	0	0,0%	0	0,0%
Total	39	103%	34	100%	73	100%
NA	3		0		3	

Comparison of positive answers (A+B) based on School Career options (in %)

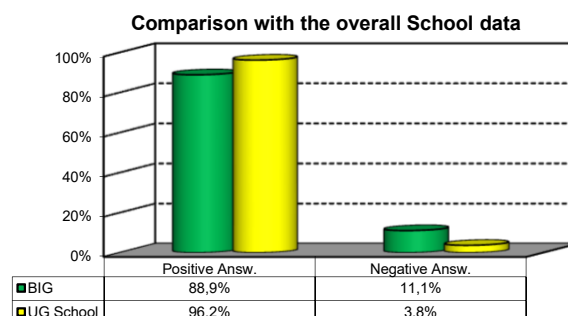
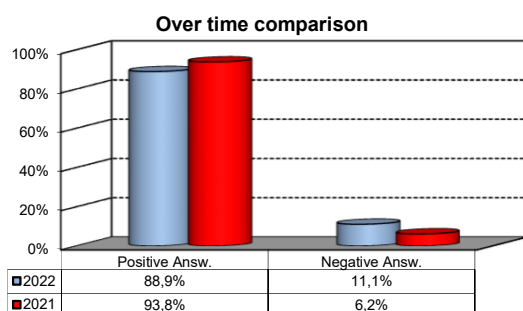


2) if you answered " More NO than YES" or "Definitely NO", indicate the subject or the subjects for which your previous knowledge revealed to be insufficient:

	a.v.	%
QUANTITATIVE METHODS FOR SOCIAL SCIENCES	4	26,7%
COMPUTER SCIENCE	3	20,0%
ACCOUNTING AND FINANCIAL STATEMENT ANALYSIS	3	20,0%
Altro	5	33,3%
Total	15	100%

3) On the whole, do you appreciate the qualifications you acquired at the end of the Bachelor program at Bocconi?

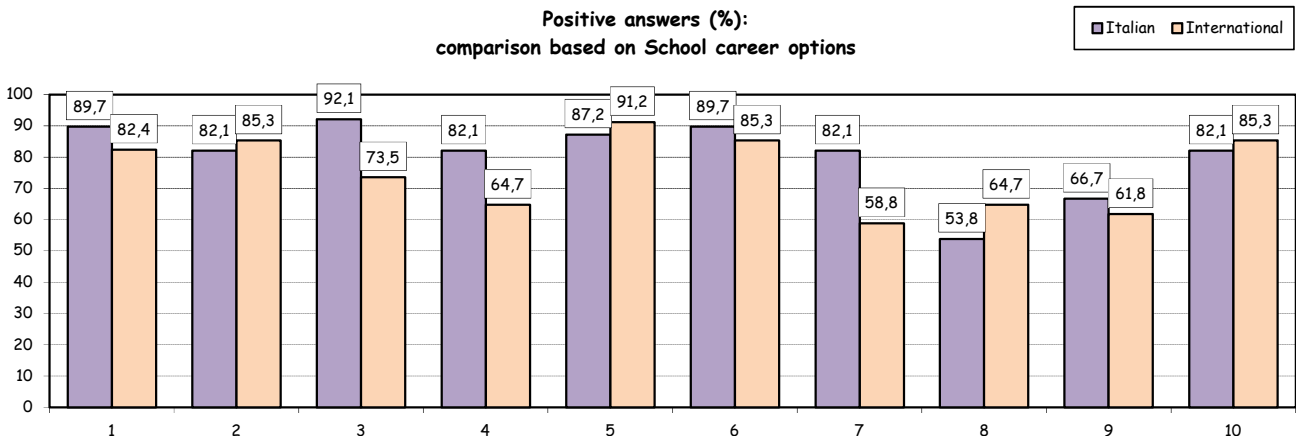
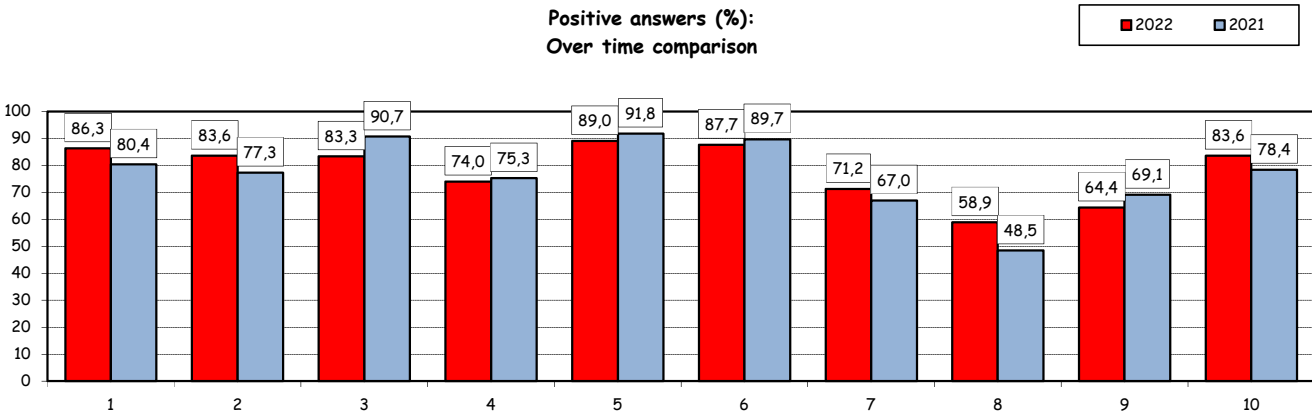
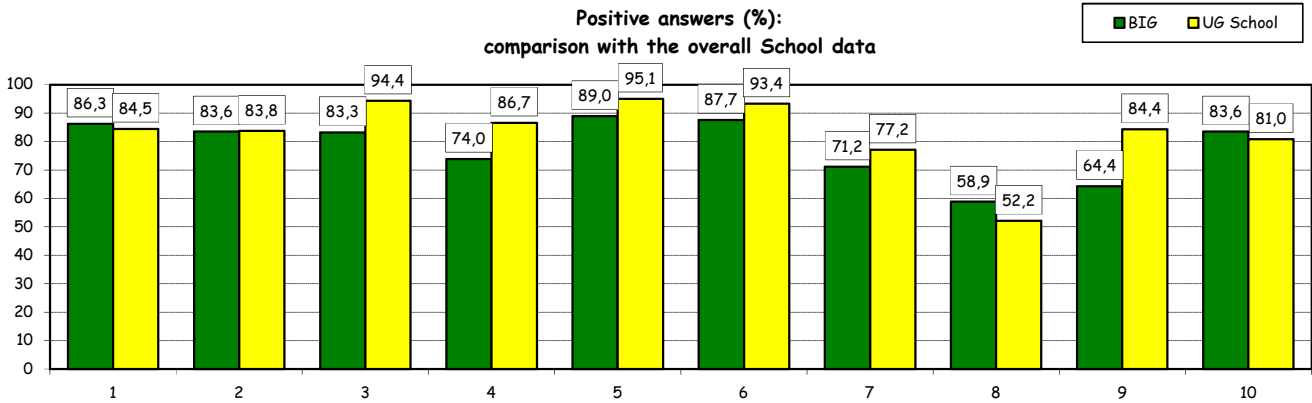
Aswers	Italian school Career		Int.nal School Career		Total	
	v.a.	%	v.a.	%	v.a.	%
A - Definitely YES	15	39,5%	17	50,0%	32	44,4%
B - More YES than NO	18	47,4%	14	41,2%	32	44,4%
C - More NO than YES	4	10,5%	3	8,8%	7	9,7%
D - Definitely NO	1	2,6%	0	0,0%	1	1,4%
Total	38	100%	34	100%	72	100%
NA	4		0		4	



Study experience

4) Do you think that your course of study at Bocconi has contributed to the development of the following skills?

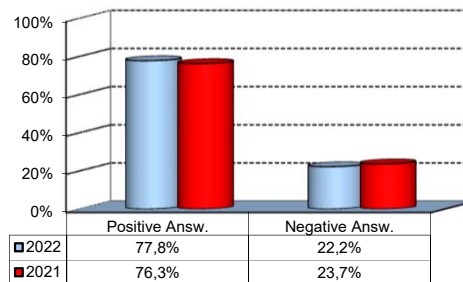
Soft Skill	Item	Definitely YES		More YES than NO		More NO than YES		Definitely NO		Total		n.a.
		a.v.	%	a.v.	%	a.v.	%	a.v.	%	a.v.	%	a.v.
1	Ability to work on a team	38	52,1	25	34,2	8	11,0	2	2,7	73	100,0	3
2	Interpersonal skills	29	39,7	32	43,8	7	9,6	5	6,8	73	100,0	3
3	Organizational skills	32	44,4	28	38,9	8	11,1	4	5,6	72	100,0	4
4	Critical thinking skills	39	53,4	15	20,5	13	17,8	6	8,2	73	100,0	3
5	Ability to analyze and select information	41	56,2	24	32,9	5	6,8	3	4,1	73	100,0	3
6	Problem-solving ability	35	47,9	29	39,7	7	9,6	2	2,7	73	100,0	3
7	Written communication skills	24	32,9	28	38,4	14	19,2	7	9,6	73	100,0	3
8	Verbal communication skills	15	20,5	28	38,4	20	27,4	10	13,7	73	100,0	3
9	Ability to cope with stress	26	35,6	21	28,8	14	19,2	12	16,4	73	100,0	3
10	Computer Skills	24	32,9	37	50,7	10	13,7	2	2,7	73	100,0	3



Study experience

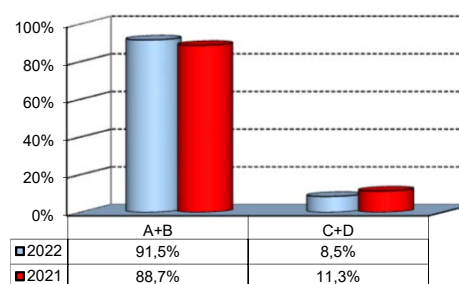
5) Do you think that the courses in your curriculum were adequately coordinated with each other?

	a.v.	%
A - Definitely YES	17	23,6%
B - More YES than NO	39	54,2%
C - More NO than YES	15	20,8%
D - Definitely NO	1	1,4%
Total	72	100%
NA	4	



6a) Do you think that the overall study load was compatible with the length of the program?

	a.v.	%
A - Definitely YES	26	36,6%
B - More YES than NO	39	54,9%
C - More NO than YES	5	7,0%
D - Definitely NO	1	1,4%
Total	71	100%
NA	5	



6b) Specifically, do you believe that the study load was excessive or insufficient?

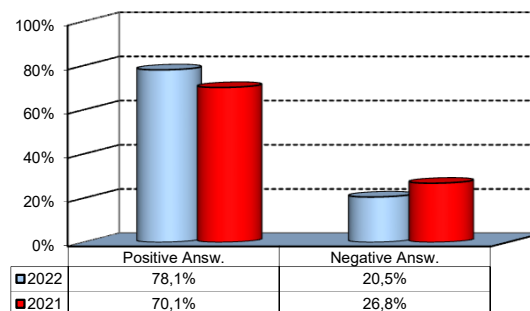
(In case of answer "C" and "D" to item no.6a)

	a.v.	2022%	2021%
Excessive	6	100,0%	80,0%
Insufficient	0	0,0%	20,0%
Total	6	2122%	100%
NA	0		

Final Report

1) Do you think that the supervision and assistance for preparing for your final report (internship report, final paper or other) were adequate?

	a.v.	%
A - Definitely YES	31	42,5%
B - More YES than NO	26	35,6%
C - More NO than YES	13	17,8%
D - Definitely NO	2	2,7%
E - Supervision was not expected	1	1,4%
Total	73	100%
NA	3	

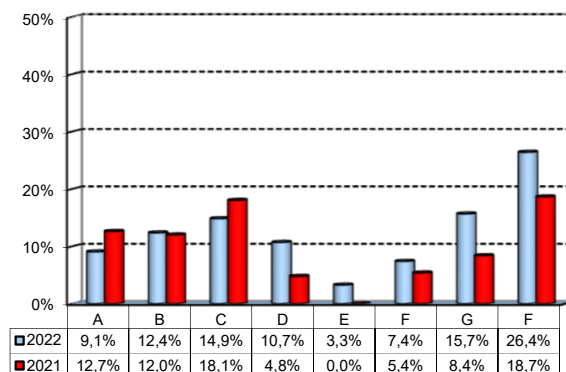


Extracurricular Activities

1) Which of the following extracurricular activities did you attend during the Bachelor Program?

(multiple answers admitted)

	a.v.	%
A - Interdisciplinary courses ("Sapere a tutto campo")	11	9,1%
B - Counseling and Self-Empowerment courses (CSE)	15	12,4%
C - Cultural Activities (visit museums, concerts, theatre and cinema, various issues)	18	14,9%
D - Sport activities	13	10,7%
E - Wellbeing courses	4	3,3%
F - IT Education Center courses (ITEC)	9	7,4%
G - Language Center courses	19	15,7%
H - None	32	26,4%
Total	121	100%
NA	0	

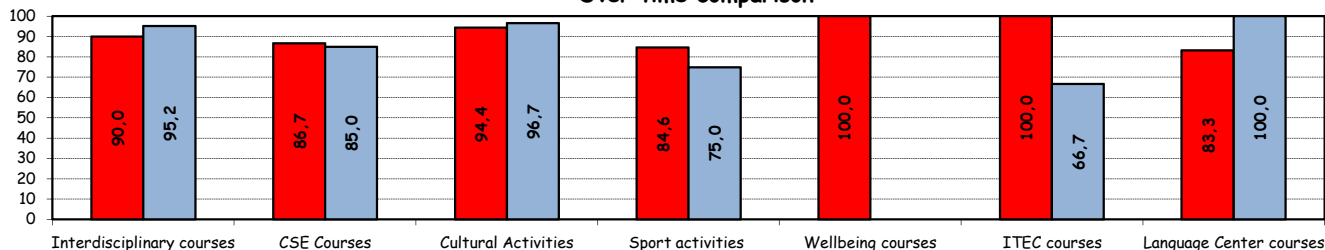


2) Do you think that the activities you took part in contributed to your cultural/educational enrichment?

	Definitely YES		More YES than NO		More NO than YES		Definitely NO		Total		NA
	a.v.	%	a.v.	%	a.v.	%	a.v.	%	a.v.	%	a.v.
A - Interdisciplinary courses	6	60,0	3	30,0	0	0,0	1	10,0	10	100,0	1
B - CSE courses	4	26,7	9	60,0	2	13,3	0	0,0	15	100,0	0
C - Cultural Activities	9	50,0	8	44,4	1	5,6	0	0,0	18	100,0	0
D - Sport activities	8	61,5	3	23,1	2	15,4	0	0,0	13	100,0	0
E - Wellbeing courses	2	50,0	2	50,0	0	0,0	0	0,0	4	100,0	0
F - ITEC courses	5	55,6	4	44,4	0	0,0	0	0,0	9	100,0	0
G - Language Center courses	10	55,6	5	27,8	3	16,7	0	0,0	18	100,0	1

Positive answers (%):

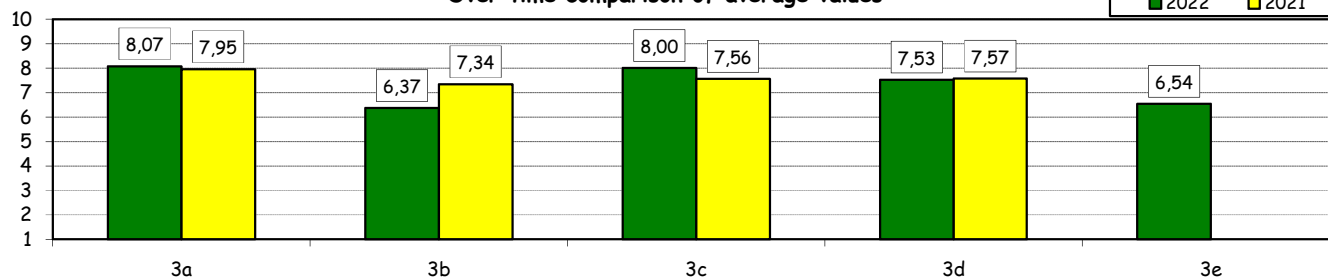
Over time comparison



How would you evaluate:

Item	Answers								Total	NA	
	Negative				Positive						
	1-2		3-4-5		6-7-8		9-10				
	a.v.	%	a.v.	%	a.v.	%	a.v.	%	a.v.	%	
3a) The range and interest of programmes offered	0	0,0	2	4,9	23	56,1	16	39,0	41	100,0	3
3b) The support you received from the Campus Life Office	4	9,8	6	14,6	23	56,1	8	19,5	41	100,0	3
3c) The support you received from ITEC	0	0,0	1	11,1	3	33,3	5	55,6	9	100,0	0
3d) The support you received from Language Center	0	0,0	5	26,3	6	31,6	8	42,1	19	100,0	0
3e) The support you received from Bocconi Sport Teams	2	15,4	2	15,4	5	38,5	4	30,8	13	100,0	0

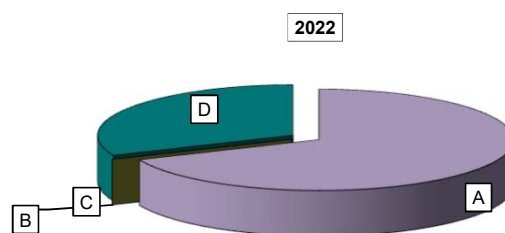
Over time comparison of average values



Experience Of Studying Abroad

1) Type of experience:

Answers	a.v.	%	
		2022	2021
A - Exchange Programme	50	68,5%	26,8%
B - Double Degree	0	0,0%	2,1%
C - Free-Mover	0	0,0%	0,0%
D - None	23	31,5%	71,1%
Total	73	100%	100%
NA	3		

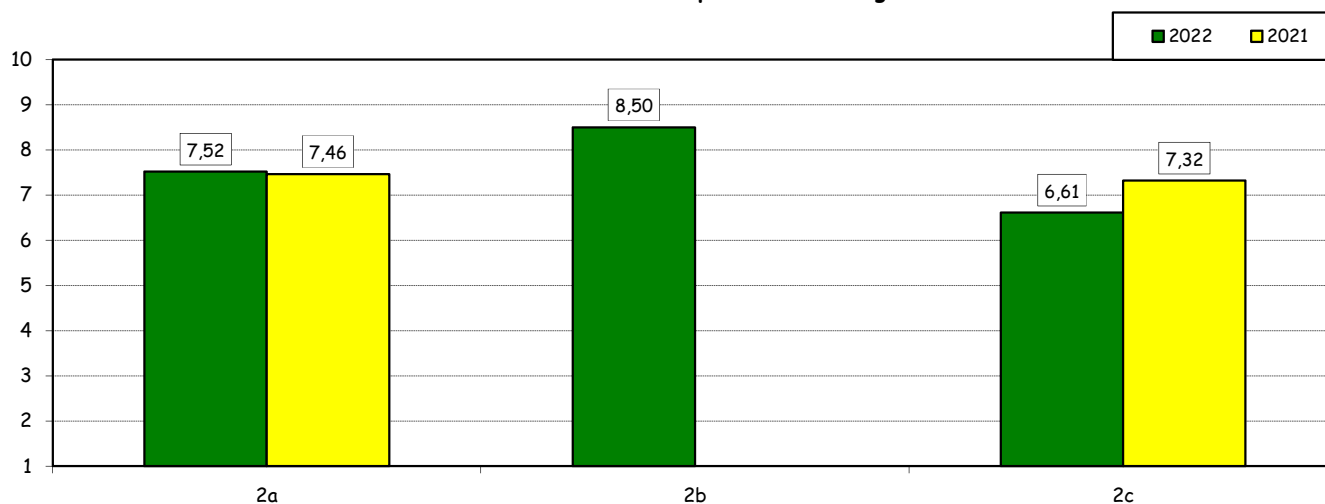


How would you evaluate:

(only A or B answers to item no.1)

Item	Answers	Negative				Positive				Total		N.A.
		1-2		3-4-5		6-7-8		9-10		a.v.	%	a.v.
		a.v.	%	a.v.	%	a.v.	%	a.v.	%	a.v.	%	a.v.
2a) Quality and completeness of information provided (emails, brochures, International Relations Service web page, meetings)		1	2,0	7	14,0	25	50,0	17	34,0	50	100,0	0
2b) The variety of programmers offered.		0	0,0	1	2,0	21	42,0	28	56,0	50	100,0	0
2c) The support you received from Bocconi before, during and after the experience abroad.		3	6,1	11	22,4	23	46,9	12	24,5	49	100,0	1

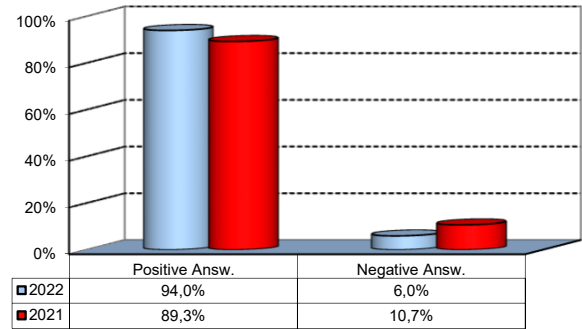
Over time comparison of average values



Experience Of Studying Abroad

3) Would you positively evaluate this experience?

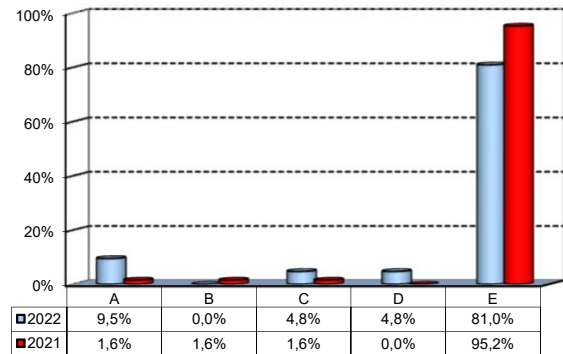
Answers	a.v.	%
A - Definitely YES	35	70,0%
B - More YES than NO	12	24,0%
C - More NO than YES	3	6,0%
D - Definitely NO	0	0,0%
Total	50	100%
NA	0	



(In case of answer "D" to item no.1)

4) Please indicate why you did not attend a period of study abroad (select all relevant reasons):

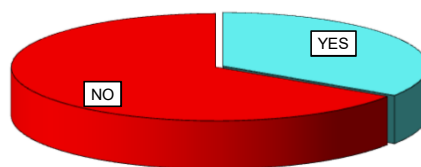
Answers	a.v.	%
A-Lack of interest in this kind of experience	2	9,5%
B-Absence of the requirements needed for participation in the program selected	0	0,0%
C-Rejection of your application	1	4,8%
D-Lack of time during the period of study	1	4,8%
E-Other (personal, family, organizational reasons, etc.)	17	81,0%
Total	21	100%
NA	2	



Internship Activities

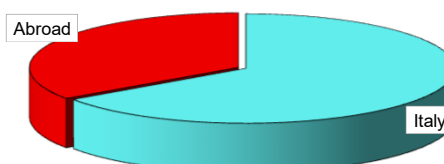
1) Did you attend an internship recognized by the Bachelor program?

	a.v.	2022	2021
YES	26	34,2%	26,8%
NO	50	65,8%	73,2%
Total	76	100%	100%
NA	0		



2) Where did you do the internship recognized by the Bachelor Program?

	a.v.	2022	2021
Italy	17	65,4%	46,2%
Abroad	9	34,6%	53,8%
Total	26	100%	100%
NA	0		

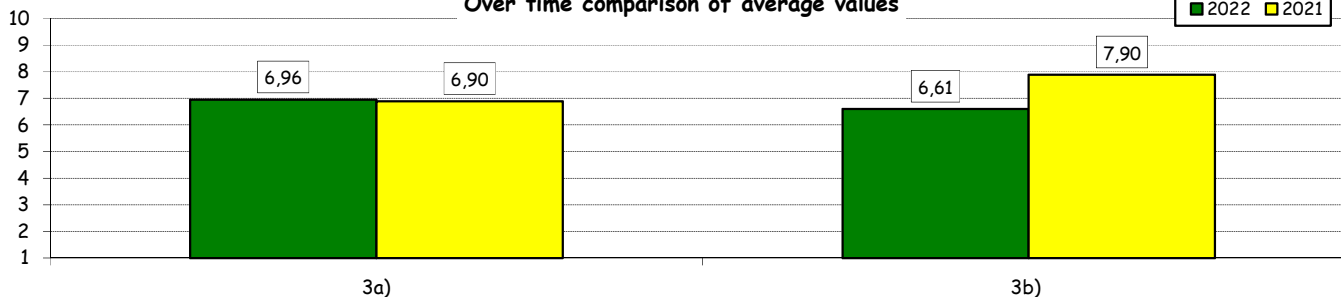


How would you evaluate:

(In case of answer "A" to item no.2)

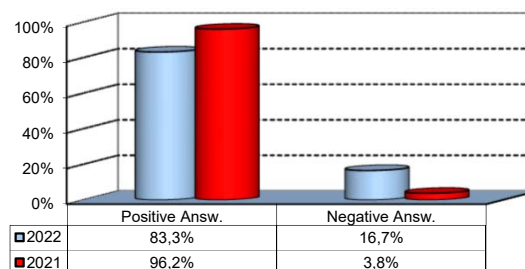
Item	Answers	Negative				Positive				Total	N.A.
		1-2		3-4-5		6-7-8		9-10			
		a.v.	%	a.v.	%	a.v.	%	a.v.	%		
3a) The number and variety of opportunities offered	1	4,2	3	12,5	12	50,0	8	33,3	24	100,0	2
3b) The support you received from Bocconi*	3	16,7	2	11,1	7	38,9	6	33,3	18	100,0	0

Over time comparison of average values



4) Would you positively evaluate this experience?

	a.v.	%
A - Definitely YES	14	58,3%
B - More YES than NO	6	25,0%
C - More NO than YES	3	12,5%
D - Definitely NO	1	4,2%
Total	24	100%
NA	2	



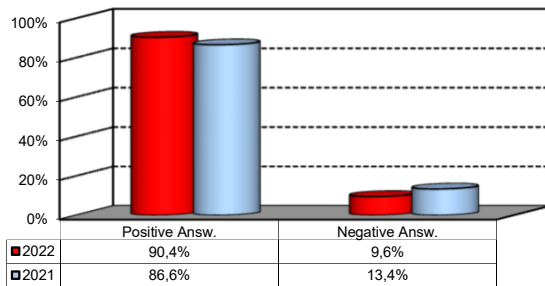
(*): From this year, this item is submitted to all the interns who have formalized their experience through university services. The value collected in this way is more suitable to the aim of monitoring and improving the service. On the other hand, it cannot be compared with the one collected the previous year.

General satisfaction and short-term plans

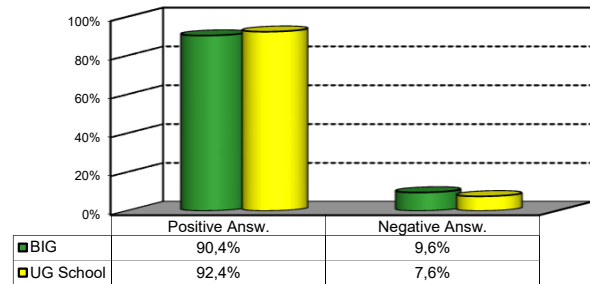
1) Are you satisfied overall with the study program you attended?

Answers	Italian School career		Int.nal School Career		Total	
	a.v.	%	a.v.	%	a.v.	%
A - Definitely YES	11	28,2%	13	38,2%	24	32,9%
B - More YES than NO	23	59,0%	19	55,9%	42	57,5%
C - More NO than YES	4	10,3%	2	5,9%	6	8,2%
D - Definitely NO	1	2,6%	0	0,0%	1	1,4%
Total	39	100%	34	100%	73	100%
NA	3		0		3	

Over time comparison



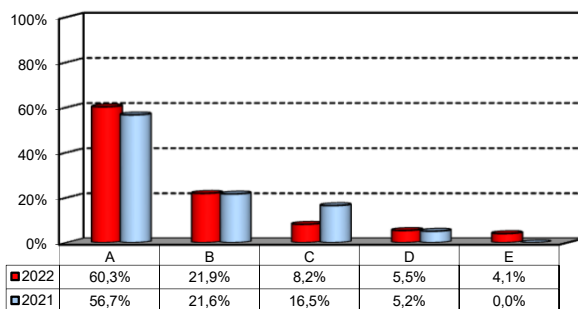
Comparison with the overall School data



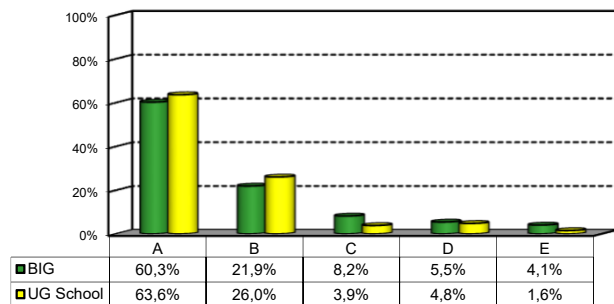
2a) If you could go back in time, would you enroll in the University again?

Answers	Italian School career		Int.nal School Career		Total	
	a.v.	%	a.v.	%	a.v.	%
A - YES, in the same Bachelor Program at this University	19	48,7%	25	73,5%	44	60,3%
B - YES, in another Program at this University	11	28,2%	5	14,7%	16	21,9%
C - YES, in the same Program but at another University	4	10,3%	2	5,9%	6	8,2%
D - YES, in another Program at another University	4	10,3%	0	0,0%	4	5,5%
E - NO, I would not enrol in university anymore	1	2,6%	2	5,9%	3	4,1%
Total	39	100%	34	100%	73	100%
NA	3		0		3	

Over time comparison



Comparison with the overall School data



General satisfaction and short-term plans

(In case of answer "B", "C", "D" or "E" to item no.2a)

2b) Why would you make a different choice?

Answers	Italian School career		Int.nal School Career		Total		2021 %
	v.a.	%	v.a.	%	2022 v.a.	%	
A - My interest has changed over time / I discovered that I have different attitudes	7	36,8%	4	44,4%	11	39,3%	54,5%
B - The Bachelor program did not satisfy my expectations	8	42,1%	2	22,2%	10	35,7%	27,3%
C- I would have preferred to attend the same Bachelor program but taught in English	0	0,0%	1	11,1%	1	3,6%	0,0%
F - Other reasons	4	21,1%	2	22,2%	6	21,4%	18,2%
Total	19	100%	9	100%	28	100%	100%
NA	4		0		4		

F- Other reasons:

Adesso probabilmente mi iscriverei al nuovo corso sullo 'cOIntelligenza Artificiale, che non era disponibile quando mi sono immatricolata io

Il corso di Laurea non ha assolutamente rispettato le sue premesse , un corso scarso, mal organizzato, dotato di un corpo docenti di dubbie capacita' e qualita' accademiche. Il programma formativo proposto e' totalmente alla deriva.

the bachelor degree obtained solely reflects political science knowledge without stressing the importance of economics during my studies nor the quantitative methods applied thus making it very hard to pass the selection of CV while applying for a job

The facilities offered by the university are completely inadequate outside the classroom

Troppi pochi spazi per studiare singolarmente e in silenzio nel campus. Considerando che la Bocconi ha molti studenti fuorisede, e' necessario offrire ai propri studenti spazi dove poter studiare (in silenzio!), non solo spazi per i lavori di gruppo.

General satisfaction and short-term plans

3) In the near future do you intend to:

	Italian School career		Int.nal School Career		Total		2021 %
	a.v.	%	a.v.	%	2022 a.v.	%	
A- To go on with university studies at Bocconi (Master of Science, one-year Master of Science)	20	51,3%	8	23,5%	28	38,4%	43,3%
B- To go on with university studies at another Italian University	1	2,6%	0	0,0%	1	1,4%	6,2%
C- To go on with university studies abroad	16	41,0%	17	50,0%	33	45,2%	43,3%
D - To immediately look for a job	1	2,6%	7	20,6%	8	11,0%	1,0%
E - To accept a job proposal received	1	2,6%	1	2,9%	2	2,7%	4,1%
F - To continue to do the job started during this degree program	0	0,0%	1	2,9%	1	1,4%	2,1%
Total	39	100%	34	100%	73	100%	100%
NA	3		0		3		

4) If you intend to continue your university studies at another University (in Italy or abroad), what are the reasons for your choice? (multiple answers admitted)

	Italian School career		Int.nal School Career		Total		2021 %
	a.v.	%	a.v.	%	2022 a.v.	%	
A - I would like to attend a more prestigious university	6	15,4%	5	16,1%	11	15,7%	13,8%
B - I would like to build a strong international curriculum	13	33,3%	11	35,5%	24	34,3%	37,5%
C- I can not bear the cost of studies (tuition fees and cost of living)	2	5,1%	2	6,5%	4	5,7%	5,0%
D - I can not bear the cost of studies (tuition fees and cost of living)	3	7,7%	1	3,2%	4	5,7%	2,5%
E- The administrative services are not sufficiently efficient	3	7,7%	3	9,7%	6	8,6%	5,0%
F - I think that the contents of Bocconi's MSc programs do not differ much from those of undergraduate programs	8	20,5%	5	16,1%	13	18,6%	22,5%
G - Other reasons	4	10,3%	4	12,9%	8	11,4%	13,8%
Total	39	100%	31	100%	70	100%	100%
NA	0		0		0		

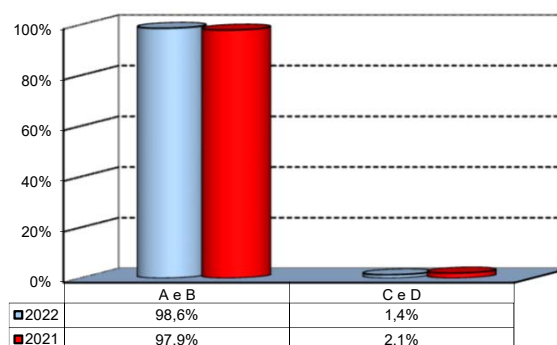
G - Other reasons:

Desidero fare nuove esperienze.
I was not interested in the MSc programs offered by Bocconi, and I did not like the university environment.
I would like to work in France so I think it's better to have a french diploma. Having a second degree from Bocconi would be less useful on my CV.
Il curriculum accademico Bocconi a forse al pari dell' universita' degli studi dell' Insubria, millantando un' internazionalita' inesistente e con proposte formative atte solo al lower ranking in PWC, ambizione della maggior parte degli studenti iscritti... oltre che essere un percorso di soffocamento delle prospettive creative dello studente non propone alcune termine di anelito ambizioso spronando lo studente al solo mero studio privo di alcuna logica.
La Bocconi non offre un corso di Laurea Magistrale atto a formare i diplomatici
The topics that I am interested in are not offered by any Bocconi master's course (Middle East politics and political journalism), so continuing the studies here would not complement my academic experience
Voglia di partire per scoprire un'altra cultura
Would like the opportunity to study abroad

Infrastructure: Classrooms, Library And Facilities

1) What is your opinion about the classrooms where lessons and other teaching activities have been held?*

Answers	a.v.	%
A - Always or nearly always adequate	60	82,2%
B - Often adequate	11	15,1%
C - Rarely adequate	1	1,4%
D - Never adequate	0	0,0%
E - I did not use them	1	1,4%
Total	73	100%
NA	3	

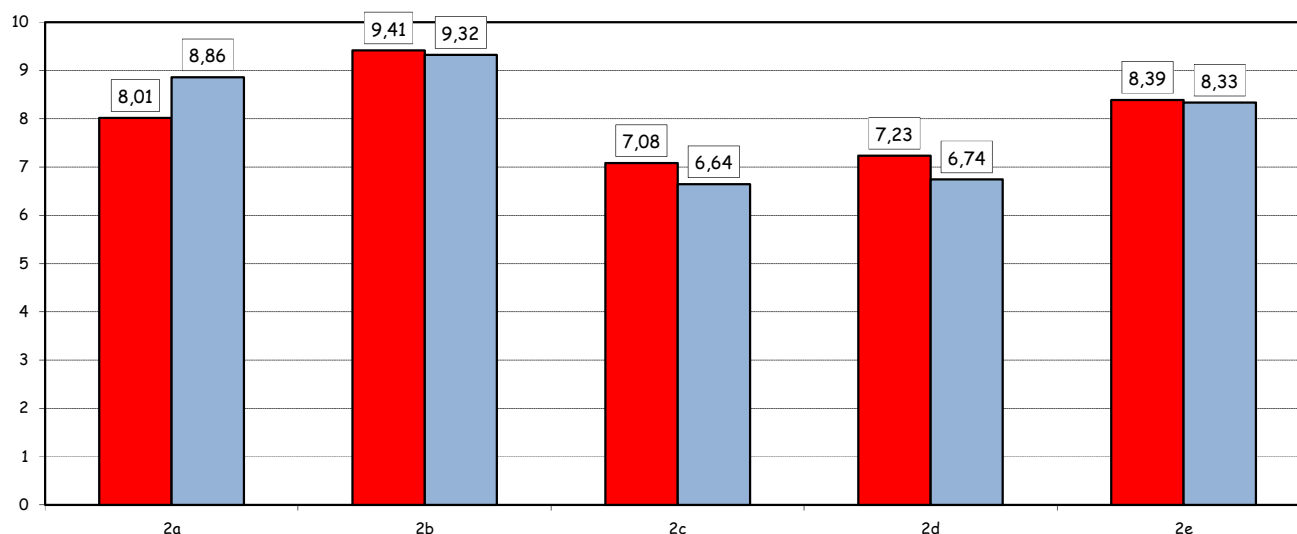


2) How would you evaluate:

Item	Answers	Negative				Positive				Total		N.R.
		1-2		3-4-5		6-7-8		9-10		a.v.	%	
		a.v.	%	a.v.	%	a.v.	%	a.v.	%			
a) The adequacy of the audio and multimedia systems (e.g. instructor's computer, projectors, video players) installed in the classrooms		0	0,0	1	1,3	50	65,8	25	32,9	76	100,0	0
b) The cleanliness of classrooms and of other common areas on campus (corridors, halls, study rooms)		0	0,0	0	0,0	8	11,0	65	89,0	73	100,0	3
c) The adequacy of the amount of areas/seats reserved to individual study in the University Library		6	9,2	13	20,0	16	24,6	30	46,2	65	100,0	11
d) The adequacy of the amount of areas/seats reserved to individual study in other buildings on campus		6	8,2	10	13,7	24	32,9	33	45,2	73	100,0	3
e) The clarity and adequacy of the signage system on campus		0	0,0	4	5,6	27	37,5	41	56,9	72	100,0	4

Over time comparison of average values

■ 2022 ■ 2021

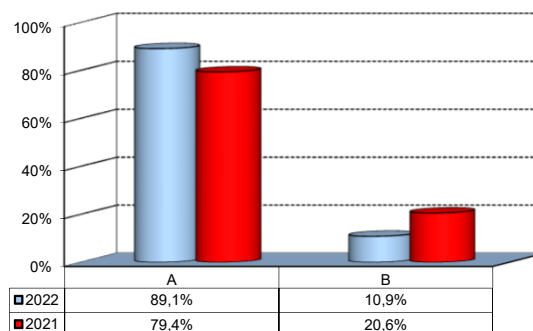


(*): the percentage shown on the graphs is calculated by excluding the responses of those who declare that they have not used the service.

Infrastructure: Classrooms, Library And Facilities

3) What is your overall opinion on the PC Labs and IT facilities provided by the University?*

Answers	a.v.	%
A- Adequate in number	41	56,2%
B- Inadequate in number	5	6,8%
C- Never used	27	37,0%
Total	73	100%
NA	3	

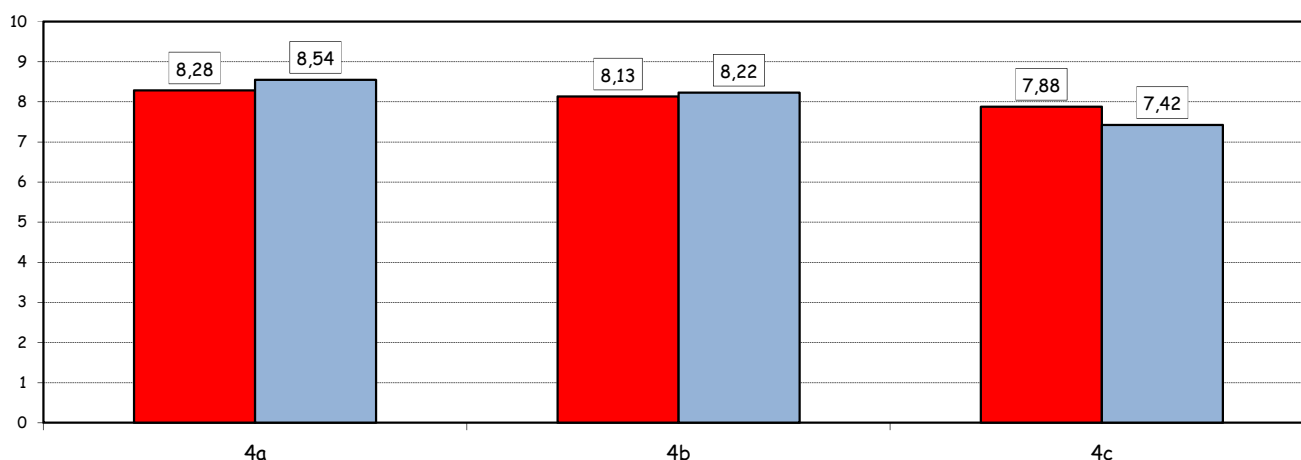


4) How would you evaluate:

Item	Answers	Negative				Positive				Total		NA
		1-2		3-4-5		6-7-8		9-10		a.v.	%	
		a.v.	%	a.v.	%	a.v.	%	a.v.	%			
a) The availability of technical staff supporting students (Tutors) in PC Labs^		0	0,0	3	6,5	23	50,0	20	43,5	46	100,0	0
b) The convenience of the PC Labs' opening hours^		0	0,0	3	6,5	25	54,3	18	39,1	46	100,0	0
c) The level of accessibility and usability of the University's IT services (Internet access points, Punto Blu, Virtual Punto Blu, wireless connection)		2	2,8	5	6,9	35	48,6	30	41,7	72	100,0	4

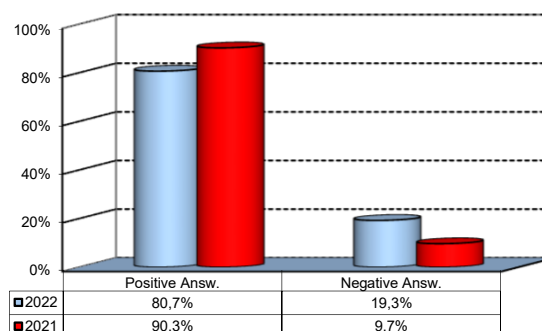
Over time comparison of average values

■ 2022 ■ 2021



5) What is your overall opinion on the Library's services, such as support for individual study?*

Answers	a.v.	%
A - Very Positive	24	32,9%
B - Quite positive	22	30,1%
C - Quite negative	10	13,7%
D - Very Negative	1	1,4%
E - Never used	16	21,9%
Total	73	100%
NA	3	



(^): Only in case of answer "A" or "B" to item no.3

(*): the percentage shown on the graphs is calculated by excluding the responses of those who declare that they have not used the service.