

EVALUATION OF THE DEGREE PROGRAM AND THE UNIVERSITY EXPERIENCE

MASTER OF SCIENCE IN POLITICS AND POLICY ANALYSIS a.y. 2021-2022

SURVEY PERIOD: JULY 2022 - JULY 2023

N° QUESTIONNAIRES PROCESSED: 57

N° OF GRADUATE STUDENTS: 64

RESPONSE RATE: 89,1%



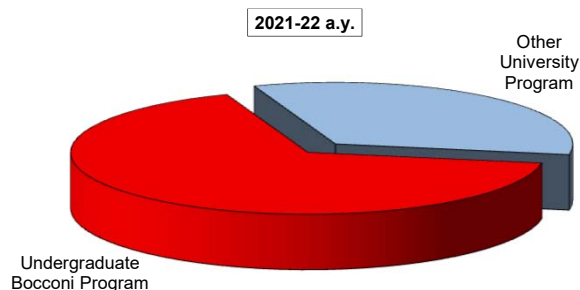
EVALUATION OF UNIVERSITY EXPERIENCE

Politics and Policy Analysis

General information

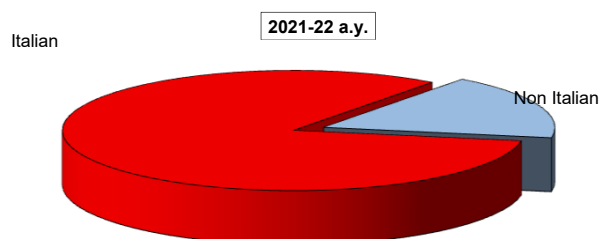
Undergraduate Career

Answers	a. v.	%	
		2021-22	2020-21
Undergraduate Bocconi Program	38	66,7	73,1
Other University Program	19	33,3	26,9
Total	57	100,0	100,0
NA	0		



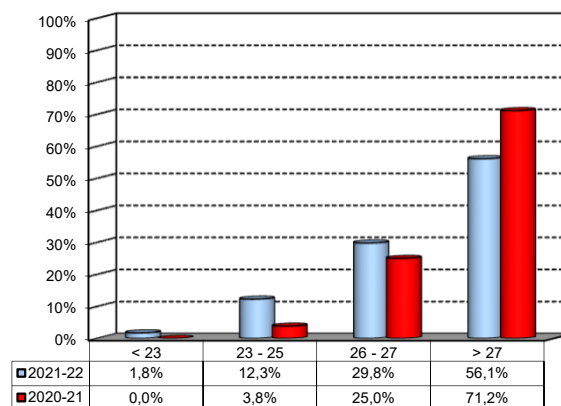
Nationality

Answers	a. v.	%	
		2021-22	2020-21
Italian	47	82,5%	82,7%
Non Italian	10	17,5%	17,3%
Total	57	100%	100%
NA	1		



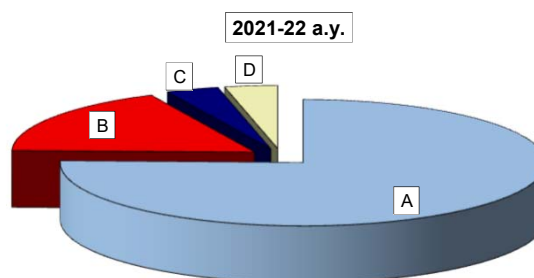
Average mark of the exams passed: (approximate average expressed in 30/30)

Answers	a. v.	%
meno di 23	1	1,8%
23-25	7	12,3%
26-27	17	29,8%
maggiore di 27	32	56,1%
Total	57	100%
NA	0	



How many of the courses included in your curriculum did you attend regularly?

Answers	a. v.	%	
		2021-22	2020-21
A - More than 75%	43	75,4	78,8
B - Between 50 and 75%	10	17,5	15,4
C - Between 25 and 50%	2	3,5	3,8
D - Less than 25%	2	3,5	1,9
Total	57	100,0	100,0
NA	0		

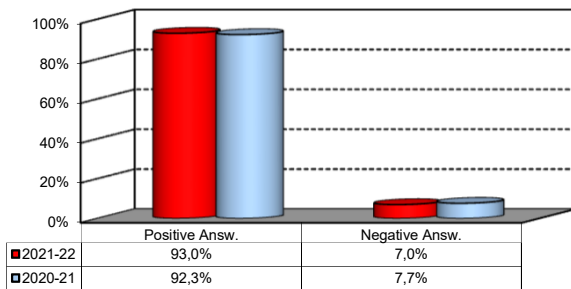


Study Experience

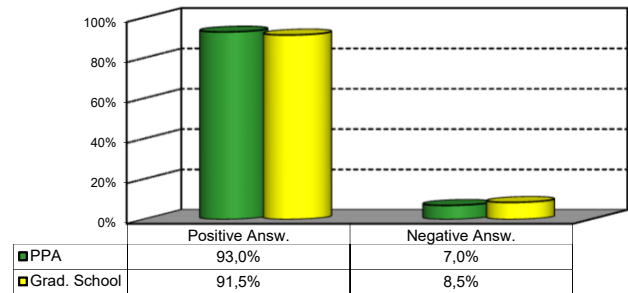
1) On the whole, do you think that the MSc program you attended at Bocconi enabled in-depth study of topics in both a theoretical and a practical sense?

Answers	Italian		Non Italian		Total	
	a.v.	%	a.v.	%	a.v.	%
A - Definitely YES	20	42,6%	3	30,0%	23	40,4%
B - More YES than NO	25	53,2%	5	50,0%	30	52,6%
C - More NO than YES	1	2,1%	1	10,0%	2	3,5%
D - Definitely NO	1	2,1%	1	10,0%	2	3,5%
Total	47	100%	10	100%	57	100%
NA	0		0			

Over time comparison



Comparison with the overall School data

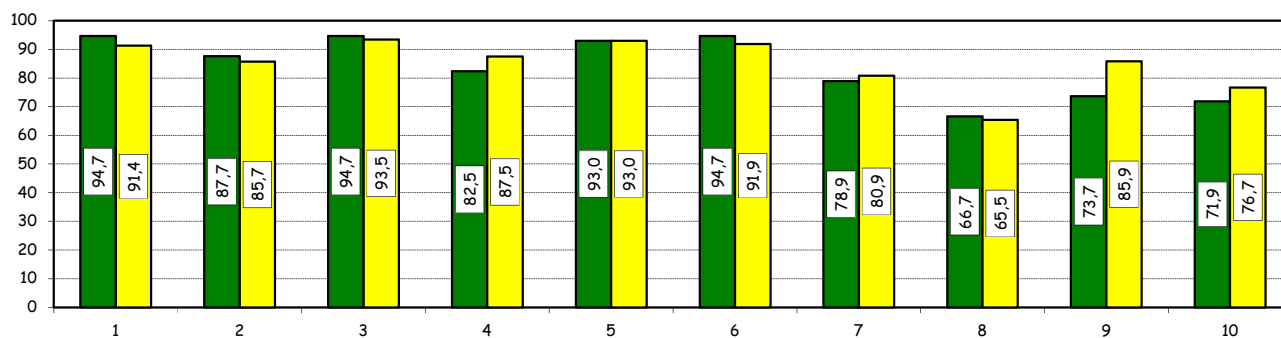


Study Experience

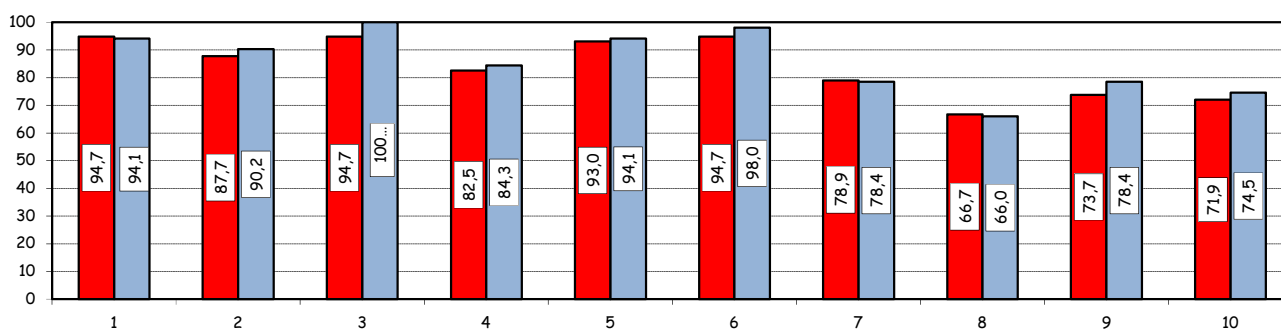
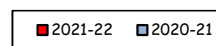
2) Do you think that your course of study at Bocconi has contributed to the development of the following skills?

Soft Skill	Item	Definitely YES		More YES than NO		More NO than YES		Definitely NO		Total		n.a.
		a.v.	%	a.v.	%	a.v.	%	a.v.	%	a.v.	%	a.v.
1	Ability to work in team	33	57,9	21	36,8	2	3,5	1	1,8	57	100,0	0
2	Interpersonal skills	22	38,6	28	49,1	6	10,5	1	1,8	57	100,0	0
3	Organizational skills	34	59,6	20	35,1	2	3,5	1	1,8	57	100,0	0
4	Critical thinking skills	28	49,1	19	33,3	8	14,0	2	3,5	57	100,0	0
5	Ability to analyze and select information	34	59,6	19	33,3	3	5,3	1	1,8	57	100,0	0
6	Problem-solving ability	26	45,6	28	49,1	2	3,5	1	1,8	57	100,0	0
7	Written communication skills	22	38,6	23	40,4	9	15,8	3	5,3	57	100,0	0
8	Verbal communication skills	11	19,3	27	47,4	16	28,1	3	5,3	57	100,0	0
9	Ability to cope with stress	28	49,1	14	24,6	11	19,3	4	7,0	57	100,0	0
10	Entrepreneurial spirit	18	31,6	23	40,4	10	17,5	6	10,5	57	100,0	0

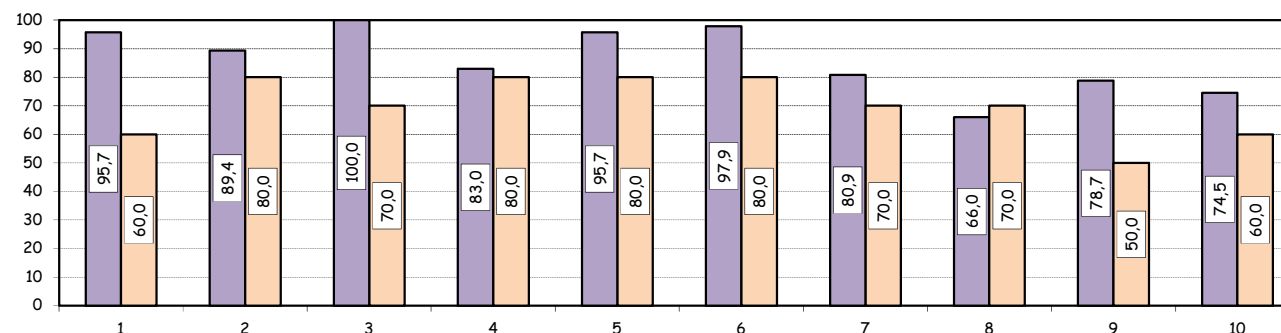
Positive answers (%):
comparison with the overall School data



Positive answers (%):
Over time comparison



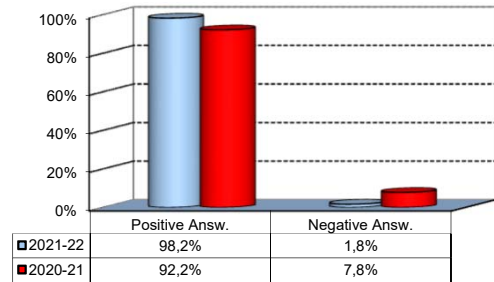
Positive answers (%):
comparison based on nationality of student



Study Experience

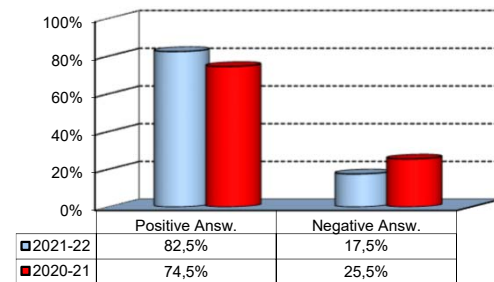
3) Do you think that teaching activities in the MSc program were structured in an active manner (frequent use of teamwork, case studies, assignments, etc.)?

Answers	a.v.	%
A - Definitely YES	24	42,1%
B - More YES than NO	32	56,1%
C - More NO than YES	1	1,8%
D - Definitely NO	0	0,0%
Total	57	100%
NA	0	



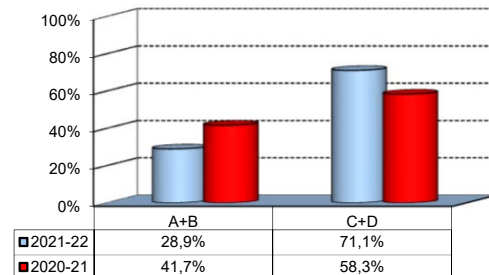
4) Do you think that the courses in your curriculum were adequately coordinated with each other?

Answers	a.v.	%
A - Definitely YES	13	22,8%
B - More YES than NO	34	59,6%
C - More NO than YES	9	15,8%
D - Definitely NO	1	1,8%
Total	57	100%
NA	0	



5) During the MSc program, did you notice any unnecessary overlaps or repetitions of subjects and content with what you studied during your undergraduate program?

Answers	a.v.	%
A-Very often	4	10,5%
B-Often	7	18,4%
C-Hardly ever	21	55,3%
D-Never	6	15,8%
Total	38	100%
NA	19	



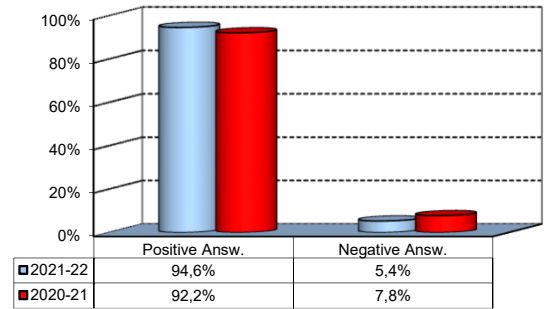
Please select the course or courses in the MSc program in which you encountered overlaps or unnecessary repetitions (multiple answers admitted)

Course	a.v.	%
WELFARE AND PUBLIC ECONOMICS - SCIENZA DELLE FINANZE	3	10,3%
METHODS AND TOOLS FOR POLICY ANALYSIS - POLICY EVALUATION	3	10,3%
POLITICAL SCIENCE - MODULE 1 (TOPICS IN COMPARATIVE POLITICS) - POLITICAL SCIENCE AND COMPARATIVE POLITICS	2	6,9%
METHODS AND TOOLS FOR POLICY ANALYSIS - EMPIRICAL RESEARCH METHODS AND DATA ANALYSIS	2	6,9%
PUBLIC ADMINISTRATION - ECONOMIA E MANAGEMENT DELLE AMMINISTRAZIONI PUBBLICHE	2	6,9%
METHODS AND TOOLS FOR POLICY ANALYSIS - ECONOMETRICS	2	6,9%
WELFARE AND PUBLIC ECONOMICS - PUBLIC ECONOMICS	2	6,9%
Other	13	44,8%
TOTAL	29	100,0%

Study Experience

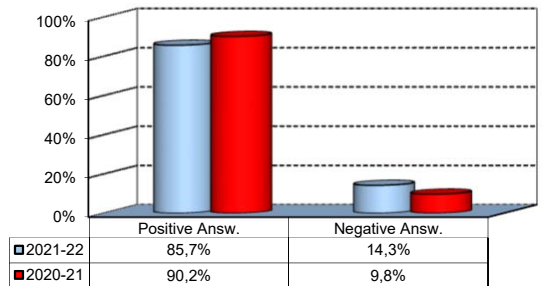
6) Do you think that the overall study load was compatible with the length of the program?

Answers	a.v.	%
A - Definitely YES	19	33,9%
B - More YES than NO	34	60,7%
C - More NO than YES	2	3,6%
D - Definitely NO	1	1,8%
Total	56	100%
NA	1	



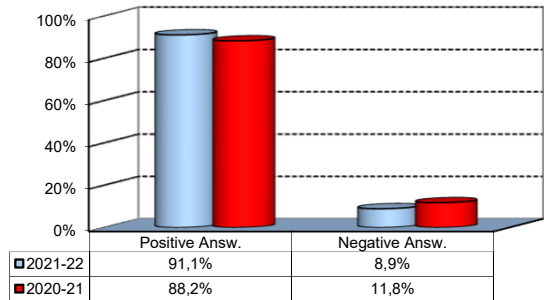
7) Was the coordination of the study program appropriately managed by the Program Director?

Answers	a.v.	%
A - Definitely YES	28	50,0%
B - More YES than NO	20	35,7%
C - More NO than YES	5	8,9%
D - Definitely NO	3	5,4%
Total	56	100%
NA	1	



8) On the whole, were the classroom climate and relationships with your classmates positive and able to enrich your personal experience?

Answers	a.v.	%
A - Definitely YES	31	55,4%
B - More YES than NO	20	35,7%
C - More NO than YES	5	8,9%
D - Definitely NO	0	0,0%
Total	56	100%
NA	1	

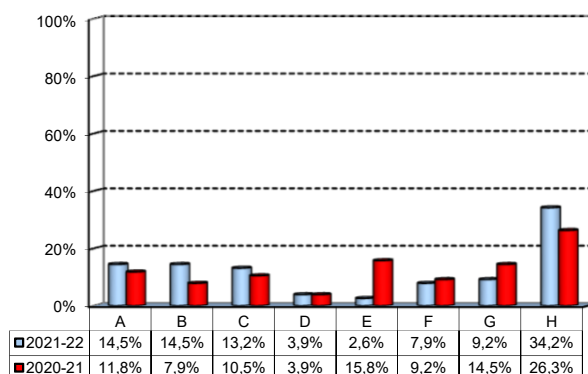


Extracurricular Activities

1) Which of the following extracurricular activities did you attend during your study program?

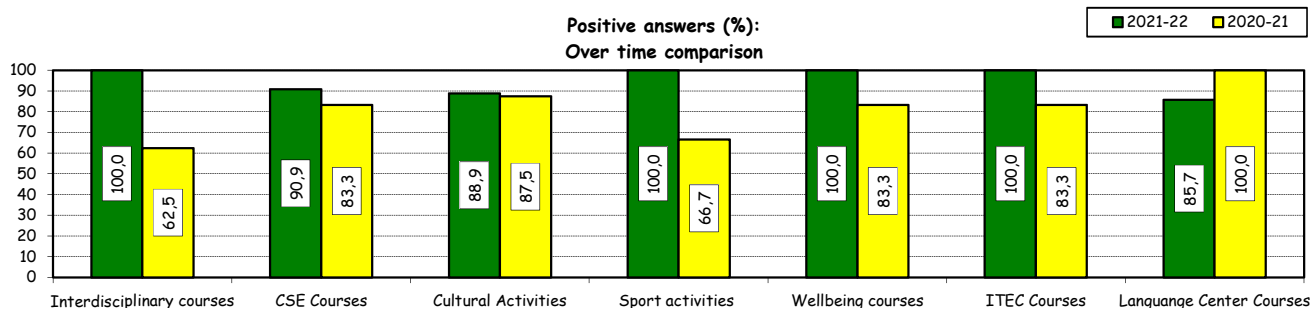
(multiple answers admitted)

Answers	a.v.	%
A - Interdisciplinary courses ("Sapere a tutto campo")	11	14,5%
B - Counseling and Self-Empowerment courses CSE	11	14,5%
C - Cultural Activities (visit museums, concerts, theatre and cinema, various issues)	10	13,2%
D - Sport activities	3	3,9%
E - Wellbeing courses	2	2,6%
F - Courses offered by ITEC	6	7,9%
G - Courses offered by Language Center	7	9,2%
H - None	26	34,2%
Total	76	100%
NA	0	



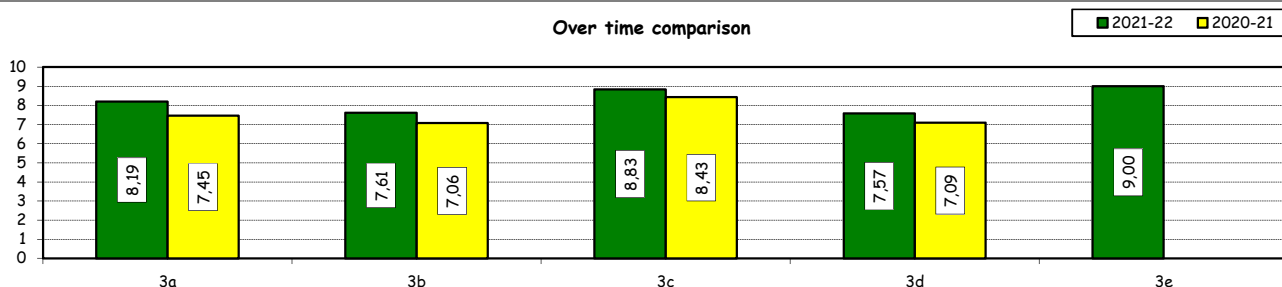
2) Do you think that the activities you took part in contributed to your cultural/educational enrichment?

	Definitely YES		More YES than NO		More NO than YES		Definitely NO		Total		NA
	a.v.	%	a.v.	%	a.v.	%	a.v.	%	a.v.	%	a.v.
A - Interdisciplinary courses	3	30,0	7	70,0	0	0,0	0	0,0	10	100,0	1
B - CSE courses	7	63,6	3	27,3	1	9,1	0	0,0	11	100,0	0
C - Cultural Activities	6	66,7	2	22,2	1	11,1	0	0,0	9	100,0	1
D - Sport activities	2	66,7	1	33,3	0	0,0	0	0,0	3	100,0	0
E - Wellbeing courses	1	50,0	1	50,0	0	0,0	0	0,0	2	100,0	0
F - ITEC courses	4	66,7	2	33,3	0	0,0	0	0,0	6	100,0	0
G - Language Center courses	3	42,9	3	42,9	1	14,3	0	0,0	7	100,0	0



How would you evaluate:

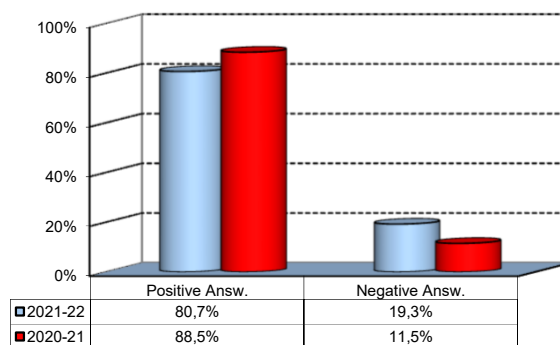
Item	Answers	Negative				Positive				Total		NA
		1-2		3-4-5		6-7-8		9-10		a.v.	%	
		a.v.	%	a.v.	%	a.v.	%	a.v.	%			
3a) The range and interest of programmes offered		0	0,0	0	0,0	20	64,5	11	35,5	31	100,0	0
3b) The support you received from the Campus Life Office		0	0,0	4	12,9	17	54,8	10	32,3	31	100,0	0
3c) The support you received from ITEC		0	0,0	0	0,0	2	33,3	4	66,7	6	100,0	0
3d) The support you received from Language Center		0	0,0	1	14,3	4	57,1	2	28,6	7	100,0	0
3e) The support you received from Bocconi Sport Team		0	0,0	0	0,0	1	33,3	2	66,7	3	100,0	0



Degree Thesis

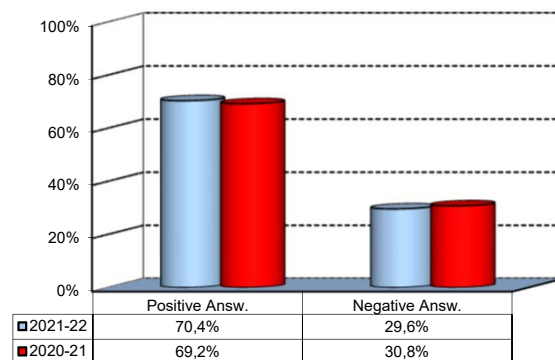
1) Do you think that the supervision and the assistance for preparing for your thesis were appropriate?

Answers	a.v.	%
A - Definitely YES	28	49,1%
B - More YES than NO	18	31,6%
C - More NO than YES	6	10,5%
D - Definitely NO	5	8,8%
Total	57	100%
NA	0	



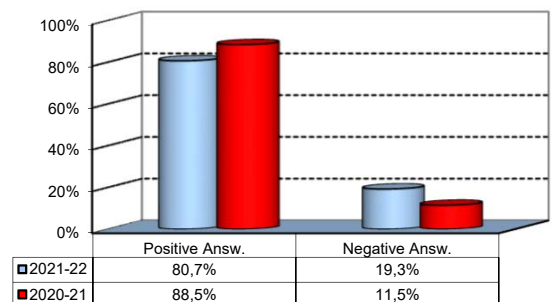
2) Do you think that the facilities provided by the University (library, computer labs) adequately supported preparation for your thesis?

Answers	a.v.	%
A - Definitely YES	16	29,6%
B - More YES than NO	22	40,7%
C - More NO than YES	13	24,1%
D - Definitely NO	3	5,6%
Total	54	100%
NA	3	



3) Do you think that your thesis was a useful experience for completing your education and a way to verify your planning and writing skills?

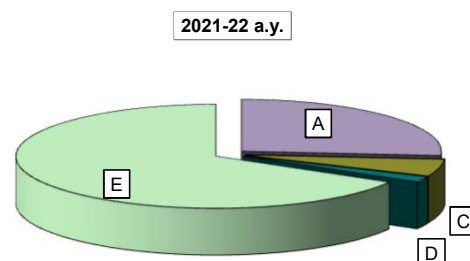
Answers	a.v.	%
A - Definitely YES	19	33,3%
B - More YES than NO	27	47,4%
C - More NO than YES	9	15,8%
D - Definitely NO	2	3,5%
Total	57	100%
NA	0	



Experience Of Studying Abroad

1) Please select the program you participated in:

Answers	a.v.	% 2021-22		% 2020-21	
A - Exchange	15	26,3	5,8		
B - CEMS-MIM	0	0,0	0,0		
C- Double Degree	3	5,3	19,2		
D - Free-Mover	1	1,8	0,0		
E- None	38	66,7	75,0		
Total	57	100,0	100,0		
NA	0				

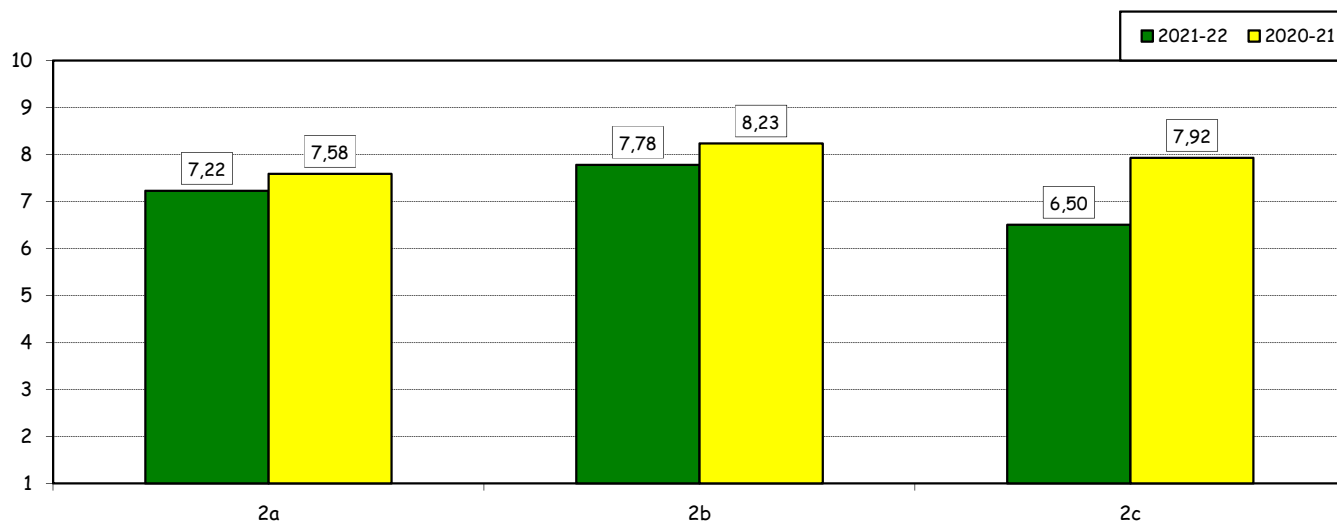


How would you evaluate:

(only A, B, C or E answers to item no.1)

Item	Answers	Negative				Positive				Total		N.A.
		1-2		3-4-5		6-7-8		9-10		a.v.	%	a.v.
		a.v.	%	a.v.	%	a.v.	%	a.v.	%	a.v.	%	a.v.
2a) Quality and completeness of information provided through: 'International Week', emails, brochures, International Relations Service web page.		1	5,6	1	5,6	13	72,2	3	16,7	18	100,0	0
2b) The range and interest of programs offered.		0	0,0	2	11,1	9	50,0	7	38,9	18	100,0	0
2c) The support you received from Bocconi International Relations.		2	11,1	3	16,7	10	55,6	3	16,7	18	100,0	0

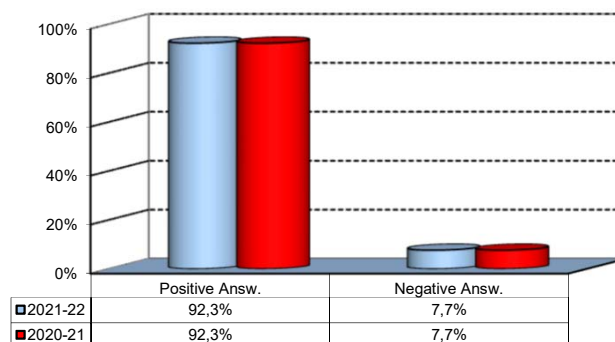
Over time comparison



Experience Of Studying Abroad

3) Would you positively evaluate this experience?

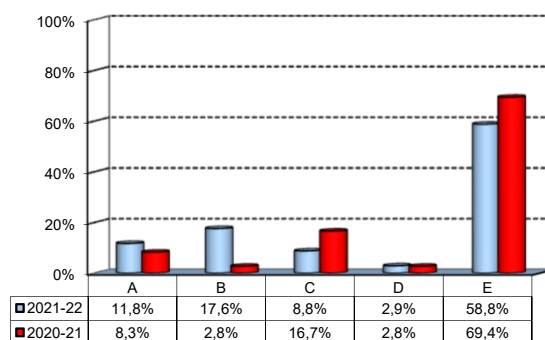
Answers	v. a.	%
A - Definitely YES	6	46,2%
B - More YES than NO	6	46,2%
C - More NO than YES	1	7,7%
D - Definitely NO	0	0,0%
Total	13	100%
NA	6	



(In case of answer "E" to item no.1)

4) Please indicate why you did not attend a period of study abroad (select all relevant reasons):

Answers	a. v.	%
A-Lack of interest in this kind of experience	4	11,8%
B-Absence of the requirements needed for participation in the program selected	6	17,6%
C-Rejection of your application	3	8,8%
D-Lack of time during the period of study	1	2,9%
E-Other (personal, family, organizational reasons, etc.)	20	58,8%
Total	34	100%
NA	4	



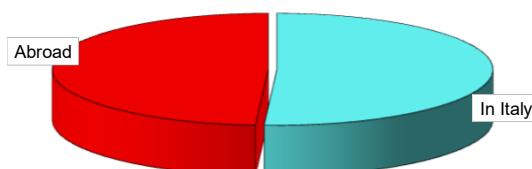
Internship Activities

1) Which activity recognized in your curriculum did you complete during the MSc program?

Answers	a.v.	%	
		2021-22	2020-21
A - Internship/Other job experience	53	96,4	80,5
B - Alternative Activity [^]	2	3,6	19,5
Total	55	100,0	100,0
NA	0		

2) Where did you complete the internship recognized by the Bachelor program?

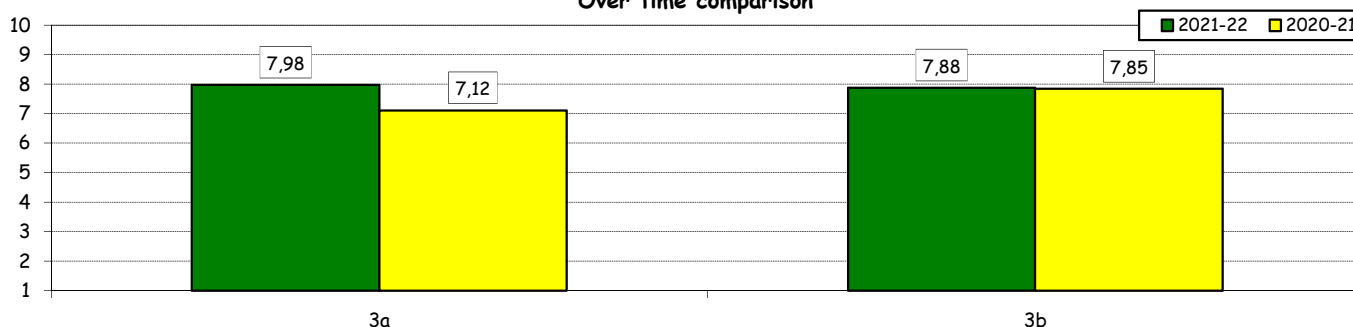
Answers	a.v.	%	
		2021-22	2020-21
In Italy	27	50,9%	66,7%
Abroad	26	49,1%	33,3%
Total	53	100%	100%
NA	0		



How would you evaluate:

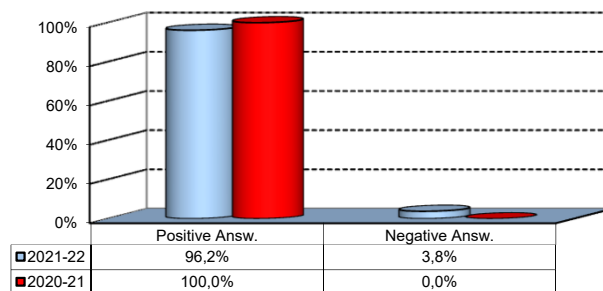
Item	Answers	Negative				Positive				Total		N.A. a.v.
		1-2		3-4-5		6-7-8		9-10		a.v.	%	
		a.v.	%	a.v.	%	a.v.	%	a.v.	%			
3a) The number and variety of opportunities offered.	0	0,0	2	3,8	29	55,8	21	40,4	52	100,0	1	
3b) The support you received from the Internship Office.	0	0,0	6	11,5	23	44,2	23	44,2	52	100,0	1	

Over time comparison



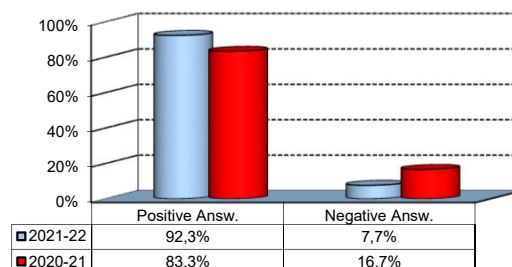
4) Would you positively evaluate this experience?

Answers	a.v.	%
A - Definitely YES	28	53,8%
B - More YES than NO	22	42,3%
C - More NO than YES	2	3,8%
D - Definitely NO	0	0,0%
Total	52	100%
NA	1	



5) Do you think that the qualifications you acquired while attending the MSc program were appropriate to perform this activity?

Answers	a.v.	%
A - Definitely YES	20	38,5%
B - More YES than NO	28	53,8%
C - More NO than YES	2	3,8%
D - Definitely NO	2	3,8%
Total	52	100%
NA	1	



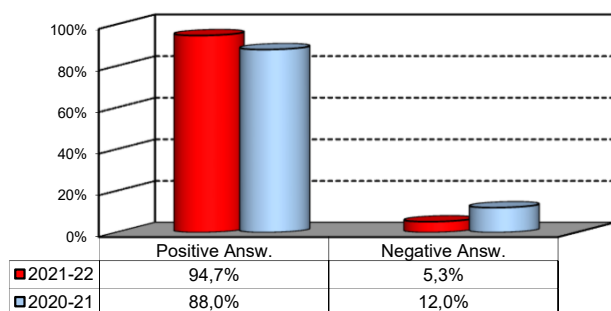
[^]: During the pandemic, students were given the opportunity to replace the mandatory internship with an alternative activity called Career Start Pack. It consists in an elective exam integrated with mandatory participation in the virtual career orientation path

General satisfaction and short-term plans

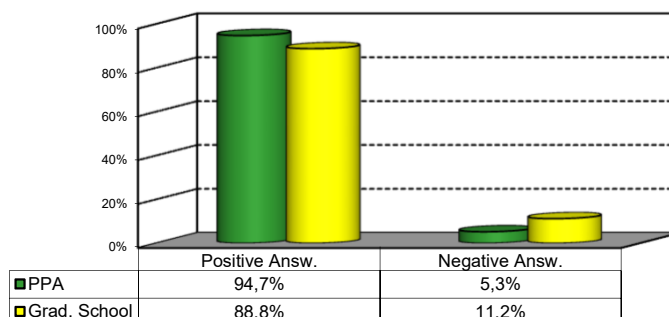
1) Are you satisfied overall with the study program you attended?

Answers	Italian		Non Italian		Total	
	a.v.	%	a.v.	%	a.v.	%
A - Definitely YES	19	40,4%	3	30,0%	22	38,6%
B - More YES than NO	26	55,3%	6	60,0%	32	56,1%
C - More NO than YES	2	4,3%	0	0,0%	2	3,5%
D - Definitely NO	0	0,0%	1	10,0%	1	1,8%
Total	47	100%	10	100%	57	100%
NA	0		0		0	

Over time comparison



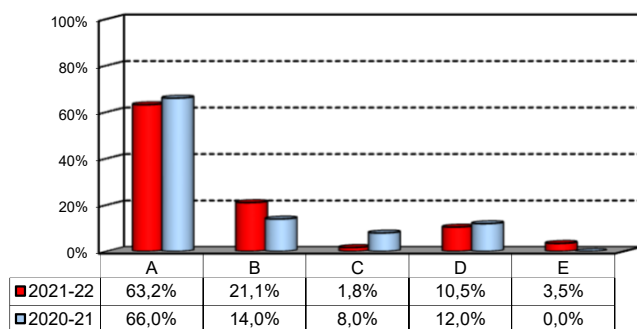
Comparison with the overall School data



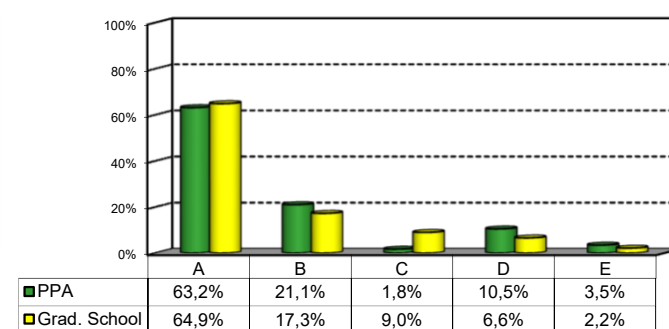
2a) If you could go back in time, would you enroll in the University again?

Answers	Italian		Non Italian		Total	
	v.a.	%	v.a.	%	v.a.	%
A-YES, in the same program at this University	33	70,2%	3	30,0%	36	63,2%
B-YES, in another program at this University	8	17,0%	4	40,0%	12	21,1%
C-YES, in the same program but at another University	1	2,1%	0	0,0%	1	1,8%
D-YES, in another program at another University	4	8,5%	2	20,0%	6	10,5%
E-NO, I would not enrol in university anymore	1	2,1%	1	10,0%	2	3,5%
Total	47	100%	10	100%	57	100%
NA	0		0		0	

Over time comparison



Comparison with the overall School data



General satisfaction and short-term plans

(In case of answer "B" to item no.2a)

2b) Which program would you enroll at this University?

MSc	a.v.	%
ACME	0	0,0%
AFC	1	9,1%
FIN	1	9,1%
CLELI	0	0,0%
ESS	3	27,3%
EMIT	0	0,0%
GIO	4	36,4%
IM	2	18,2%
M	0	0,0%
MM	0	0,0%
CYBER	0	0,0%
Total	11	100%
NA	1	

2c) Why would you make a different choice?

(In case of answer "B", "C", "D" or "E" to item no.2a)

Answers	a.v.	% 2021-22	% 2020-21
A - My interest has changed over time / I discovered that I have different attitudes	11	55,0%	10,0%
B -The MS program did not satisfy my expectations	4	20,0%	60,0%
C I would have preferred to attend the same MS program but taught in English	0	0,0%	0,0%
D - Other reasons	5	25,0%	30,0%
Total	20	100%	100%
NA	1		

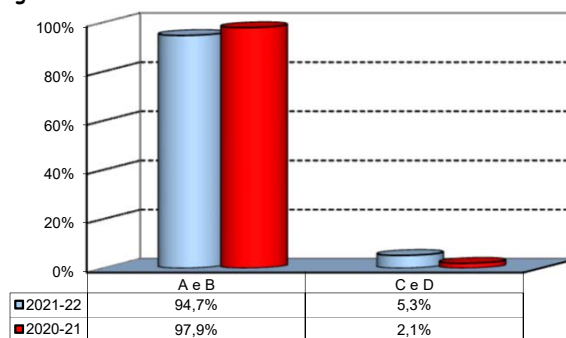
D- Other reasons:

Il corso che ho frequentato si è rivelato molto simile alla mia triennale. A GIO avrei avuto corsi più diversi dal mio percorso precedente di studi.
L'ambiente contribuisce a creare estrema e non necessaria competizione, corsi di laurea troppo improntati sull'apprendimento nozionistico piuttosto che pratico, mancanza totale di comunicazione diretta con lo studente
Master all'estero di un anno
non ero entrata nella mia prima scelta

Infrastructure: Classrooms, Library And Facilities

1) What is your opinion about the classrooms where lessons and other teaching activities have been held?*

Answers	a.v.	%
A - Always or nearly always adequate	46	80,7%
B - Often adequate	8	14,0%
C - Rarely adequate	2	3,5%
D - Never adequate	1	1,8%
E - I did not use them	0	0,0%
Total	57	100%
NA	0	

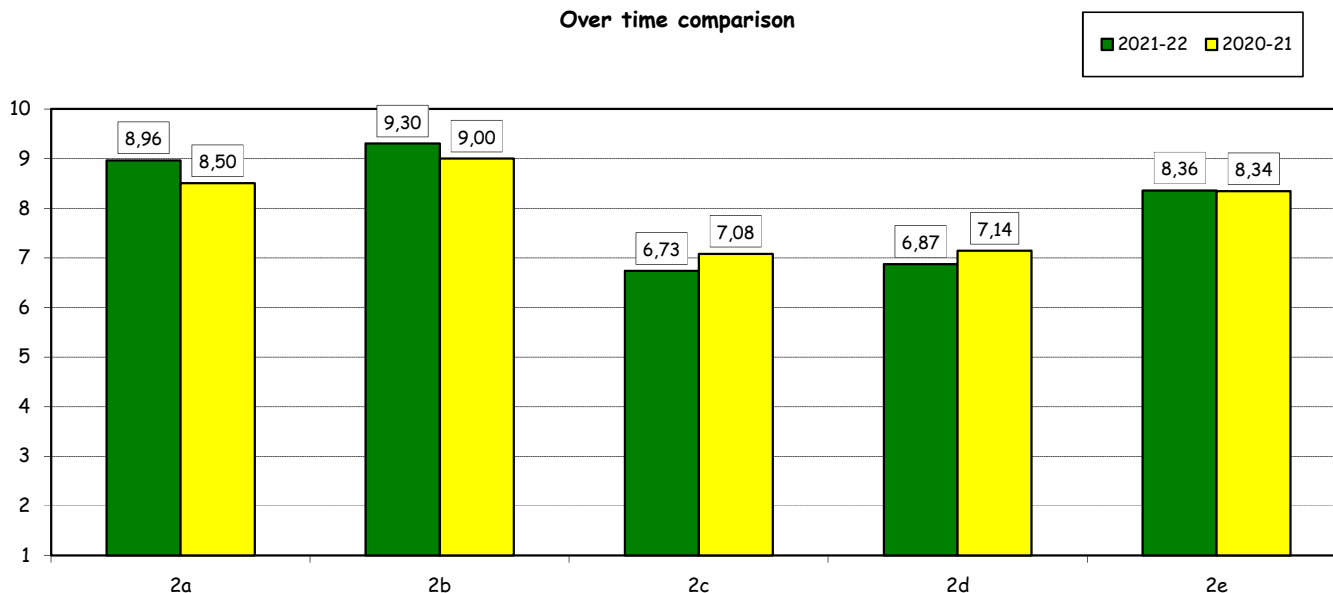


2) How would you evaluate:

(In case of answer "A", "B", "C" or "D" to item no.1)

Item	Answers	Negative				Positive				Total		NA	N.R.
		1-2		3-4-5		6-7-8		9-10		a.v.	%		
		a.v.	%	a.v.	%	a.v.	%	a.v.	%				
a) The adequacy of the audio and multimedia systems (e.g. instructor's computer, projectors, video players) installed in the classrooms.		0	0,0	1	1,8	14	25,0	41	73,2	56	100,0		1
b) The cleanliness of classrooms and of other common areas on campus (corridors, halls, study rooms).		0	0,0	0	0,0	10	17,9	46	82,1	56	100,0		1
c) The adequacy of the amount of areas/seats reserved to individual study in the University Library.		3	5,4	10	17,9	29	51,8	14	25,0	56	100,0	1	1
d) The adequacy of the amount of areas/seats reserved to individual study in other buildings on campus.		4	7,3	8	14,5	25	45,5	18	32,7	55	100,0	0	2
e) The clarity and adequacy of the signage system on campus.		0	0,0	2	3,6	26	46,4	28	50,0	56	100,0		1

Over time comparison

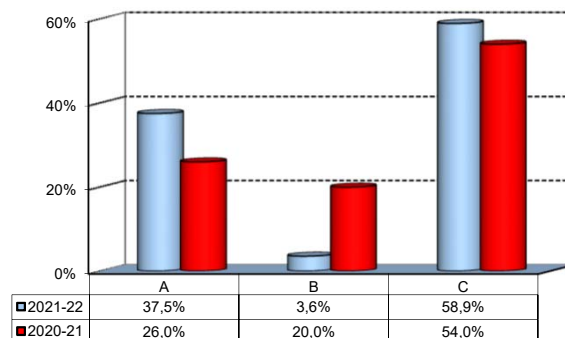


(*): the percentage shown on the graphs is calculated by excluding the responses of those who declare that they have not used the service.

Infrastructure: Classrooms, Library And Facilities

3) What is your overall opinion on the PC Labs and IT facilities provided by the University?

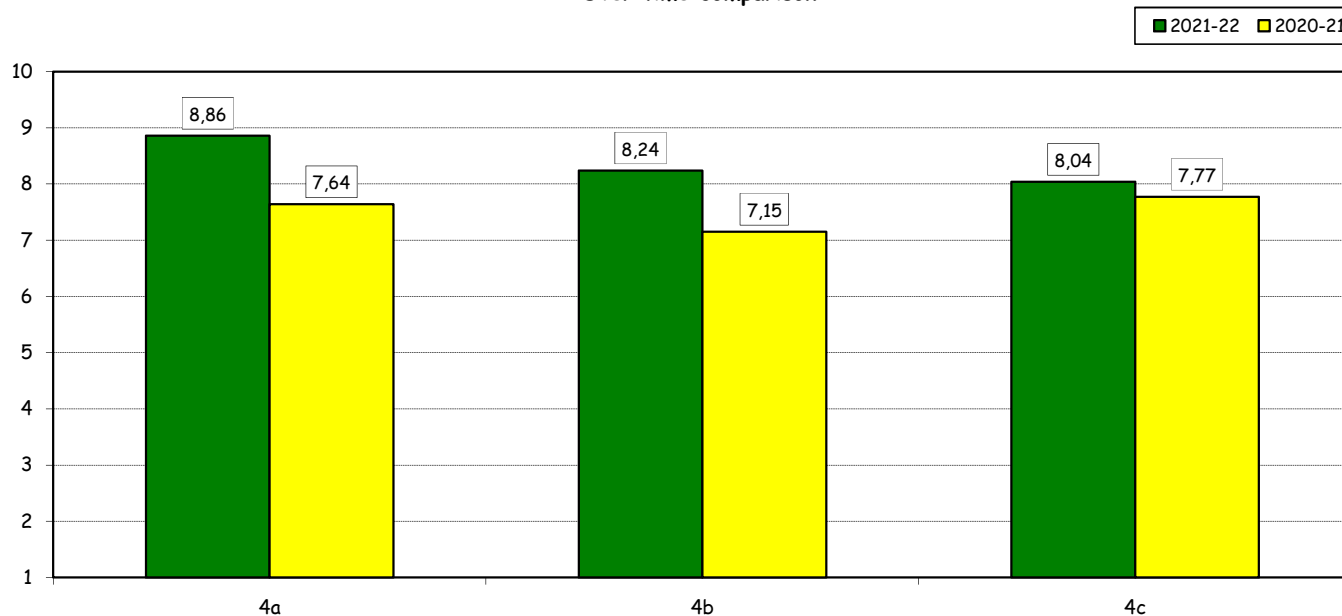
Answers	a.v.	%
A- Adequate in number	21	37,5%
B- Inadequate in number	2	3,6%
C- Never used	33	58,9%
Total	56	100%
NA	1	



4) How do you evaluate:

Item	Answers	Negative				Positive				Total	N.R.	
		1-2		3-4-5		6-7-8		9-10				
		a.v.	%	a.v.	%	a.v.	%	a.v.	%			
a) The availability of technical staff supporting students (Tutors) in PC Labs.*		0	0,0	0	0,0	6	28,6	15	71,4	21	100,0	2
b) The convenience of the PC Labs' opening hours.*		0	0,0	1	4,8	8	38,1	12	57,1	21	100,0	2
c) The level of accessibility and usability of the University's IT services (Internet access points, Punto Blu, Virtual Punto Blu, wireless connection).		0	0,0	4	7,1	27	48,2	25	44,6	56	100,0	0

Over time comparison

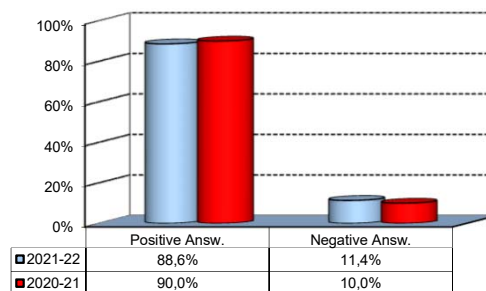


(*): Only in case of answer "A" or "B" to item no.3

Infrastructure: Classrooms, Library And Facilities

5) What is your overall opinion on the Library's services, such as support for individual study?*

Answers	a.v.	%
A - Very Positive	15	26,8%
B - Quite positive	24	42,9%
C - Quite negative	5	8,9%
D - Very Negative	0	0,0%
E - Never used	12	21,4%
Total	56	100%
NA	1	

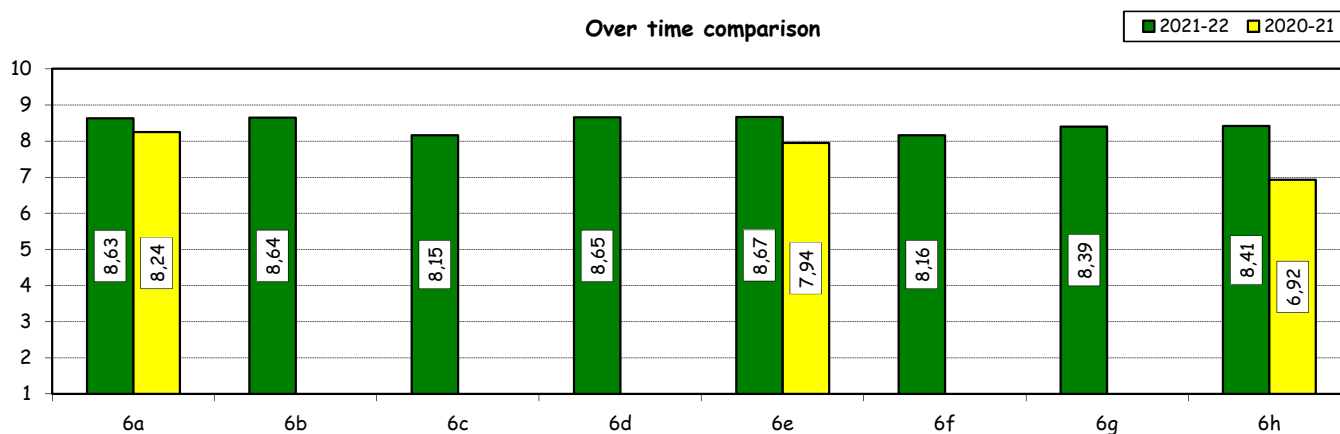


6) How would you evaluate:

(In case of answer "A", "B", "C" or "D" to item no. 5)

Item	Answers	Negative				Positive				Total		N.A. a.v.
		1-2		3-4-5		6-7-8		9-10		a.v.	%	
		a.v.	%	a.v.	%	a.v.	%	a.v.	%			
a) The convenience of the Library's opening hours and access to its main services.		0	0,0	2	5,0	15	37,5	23	57,5	40	100,0	4
b) Range of subjects covered in hardcopy collections (books and journals) compared to your needs of study and research		0	0,0	1	2,6	13	33,3	25	64,1	39	100,0	5
c) The relevance and updating of online collections (e-books, e-journals, databases) compared to your needs of study and research		1	2,6	1	2,6	21	53,8	16	41,0	39	100,0	5
d) The ease of use of search tools available on the Library website		0	0,0	1	2,5	16	40,0	23	57,5	40	100,0	4
e) The assistance provided by the Library staff		0	0,0	1	2,6	14	35,9	24	61,5	39	100,0	5
f) Availability of documents (textbooks, articles, chapters, case studies, etc.) used in individual courses		0	0,0	4	10,5	14	36,8	20	52,6	38	100,0	6
g) The Library website as a source of information on the services offered and as a point of access for resources		1	2,6	1	2,6	17	44,7	19	50,0	38	100,0	6
h) The usefulness of workshops offered by the Library to understand how to use the resources available (catalogues, e-journals, databases, etc.)		0	0,0	1	2,9	15	44,1	18	52,9	34	100,0	10

Over time comparison



(*): the percentage shown on the graphs is calculated by excluding the responses of those who declare that they have not used the service.