

EVALUATION OF THE DEGREE PROGRAM AND THE UNIVERSITY EXPERIENCE

MASTER OF SCIENCE IN DATA SCIENCE AND BUSINESS ANALYTICS a.y. 2021-2022

SURVEY PERIOD: JULY 2022 - JULY 2023

N° QUESTIONNAIRES PROCESSED: 53

N° OF GRADUATE STUDENTS: 59

RESPONSE RATE: 89,8%



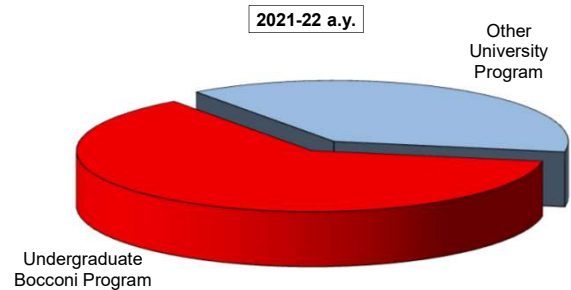
EVALUATION OF UNIVERSITY EXPERIENCE

Data Science and Business Analytics

General information

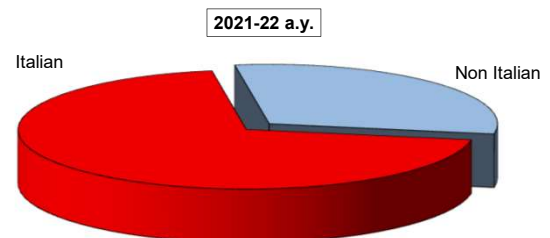
Undergraduate Career

Answers	a. v.	%	
		2021-22	2020-21
Undergraduate Bocconi Program	33	62,3	64,3
Other University Program	20	37,7	35,7
Total	53	100,0	100,0
NA	0		



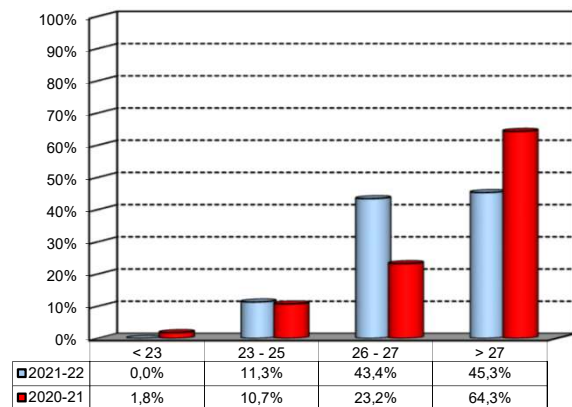
Nationality

Answers	a. v.	%	
		2021-22	2020-21
Italian	37	69,8%	75,0%
Non Italian	16	30,2%	25,0%
Total	53	100%	100%
NA	0		



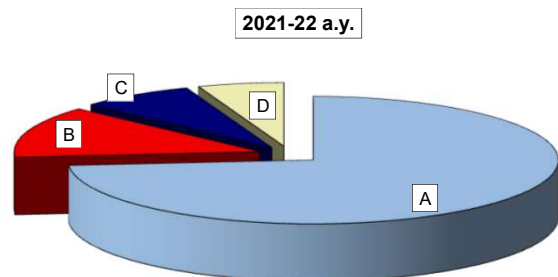
Average mark of the exams passed: (approximate average expressed in 30/30)

Answers	a. v.	%
meno di 23	0	0,0%
23-25	6	11,3%
26-27	23	43,4%
maggiore di 27	24	45,3%
Total	53	100%
NA	0	



How many of the courses included in your curriculum did you attend regularly?

Answers	a. v.	%	
		2021-22	2020-21
A - More than 75%	39	73,6	73,2
B - Between 50 and 75%	7	13,2	17,9
C - Between 25 and 50%	4	7,5	3,6
D - Less than 25%	3	5,7	5,4
Total	53	100,0	100,0
NA	0		

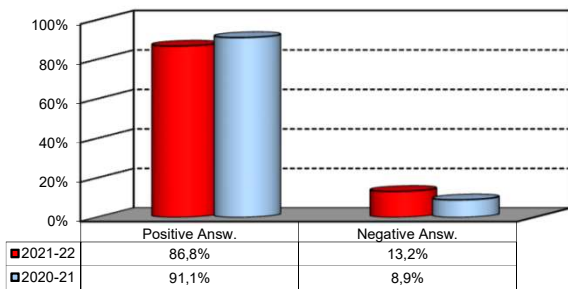


Study Experience

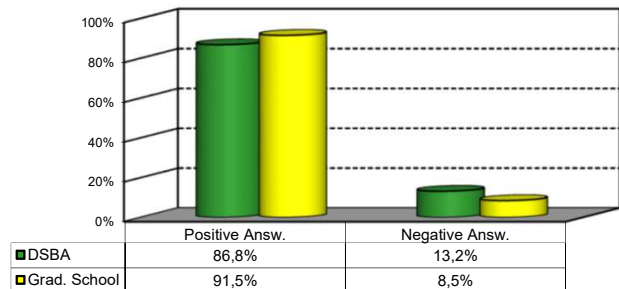
1) On the whole, do you think that the MSc program you attended at Bocconi enabled in-depth study of topics in both a theoretical and a practical sense?

Answers	Italian		Non Italian		Total	
	a.v.	%	a.v.	%	a.v.	%
A - Definitely YES	22	59,5%	6	37,5%	28	52,8%
B - More YES than NO	12	32,4%	6	37,5%	18	34,0%
C - More NO than YES	3	8,1%	4	25,0%	7	13,2%
D - Definitely NO	0	0,0%	0	0,0%	0	0,0%
Total	37	100%	16	100%	53	100%
NA	0		0			

Over time comparison



Comparison with the overall School data



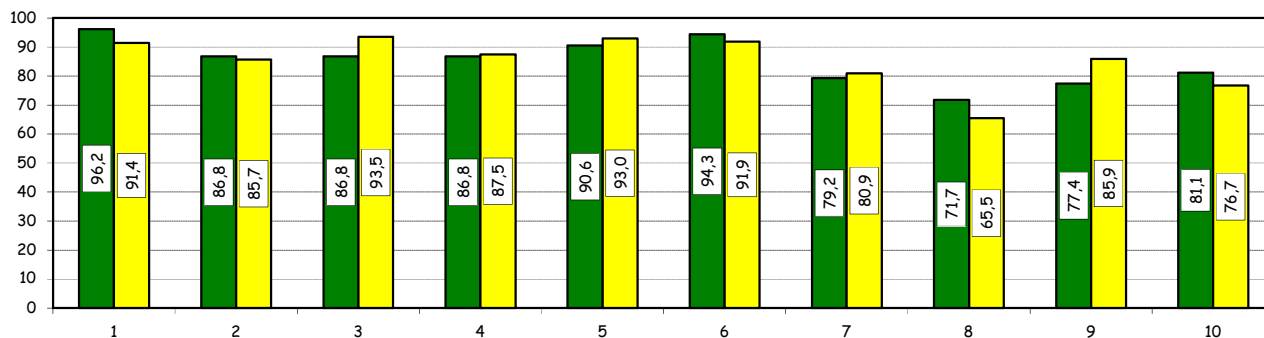
Study Experience

2) Do you think that your course of study at Bocconi has contributed to the development of the following skills?

Soft Skill	Item	Definitely YES		More YES than NO		More NO than YES		Definitely NO		Total		n.a.
		a.v.	%	a.v.	%	a.v.	%	a.v.	%	a.v.	%	a.v.
1	Ability to work in team	33	62,3	18	34,0	2	3,8	0	0,0	53	100,0	0
2	Interpersonal skills	24	45,3	22	41,5	7	13,2	0	0,0	53	100,0	0
3	Organizational skills	27	50,9	19	35,8	6	11,3	1	1,9	53	100,0	0
4	Critical thinking skills	27	50,9	19	35,8	6	11,3	1	1,9	53	100,0	0
5	Ability to analyze and select information	30	56,6	18	34,0	4	7,5	1	1,9	53	100,0	0
6	Problem-solving ability	32	60,4	18	34,0	2	3,8	1	1,9	53	100,0	0
7	Written communication skills	13	24,5	29	54,7	8	15,1	3	5,7	53	100,0	0
8	Verbal communication skills	15	28,3	23	43,4	13	24,5	2	3,8	53	100,0	0
9	Ability to cope with stress	23	43,4	18	34,0	7	13,2	5	9,4	53	100,0	0
10	Entrepreneurial spirit	20	37,7	23	43,4	5	9,4	5	9,4	53	100,0	0

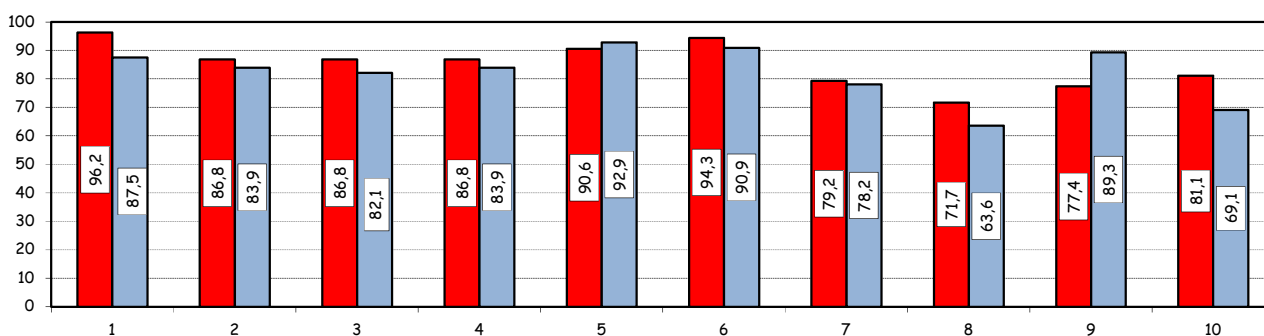
Positive answers (%):
comparison with the overall School data

■ DSBA ■ Grad. School



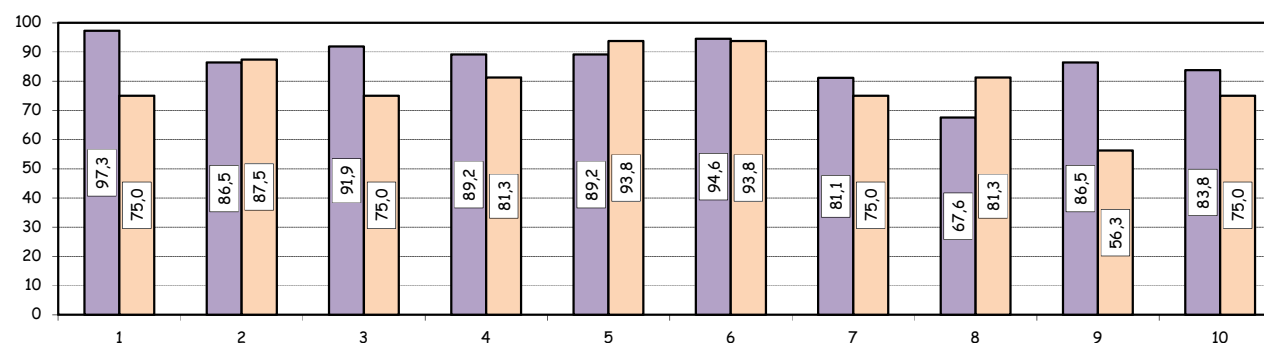
Positive answers (%):
Over time comparison

■ 2021-22 ■ 2020-21



Positive answers (%):
comparison based on nationality of student

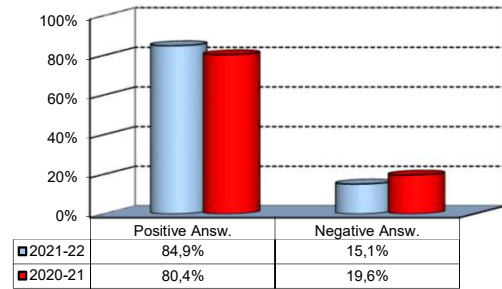
■ Italian ■ Non Italian



Study Experience

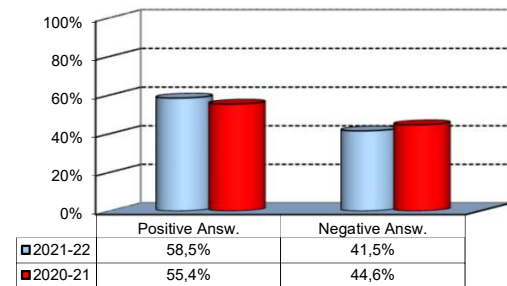
3) Do you think that teaching activities in the MSc program were structured in an active manner (frequent use of teamwork, case studies, assignments, etc.)?

Answers	a. v.	%
A - Definitely YES	19	35,8%
B - More YES than NO	26	49,1%
C - More NO than YES	6	11,3%
D - Definitely NO	2	3,8%
Total	53	100%
NA	0	



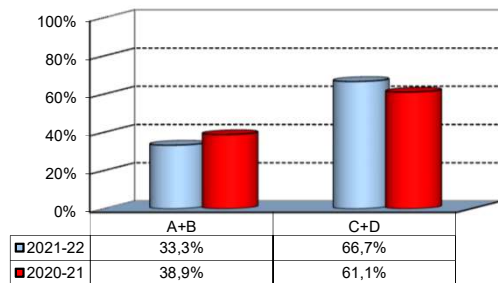
4) Do you think that the courses in your curriculum were adequately coordinated with each other?

Answers	a. v.	%
A - Definitely YES	9	17,0%
B - More YES than NO	22	41,5%
C - More NO than YES	18	34,0%
D - Definitely NO	4	7,5%
Total	53	100%
NA	0	



5) During the MSc program, did you notice any unnecessary overlaps or repetitions of subjects and content with what you studied during your undergraduate program?

Answers	a. v.	%
A-Very often	5	15,2%
B-Often	6	18,2%
C-Hardly ever	11	33,3%
D-Never	11	33,3%
Total	33	100%
NA	20	



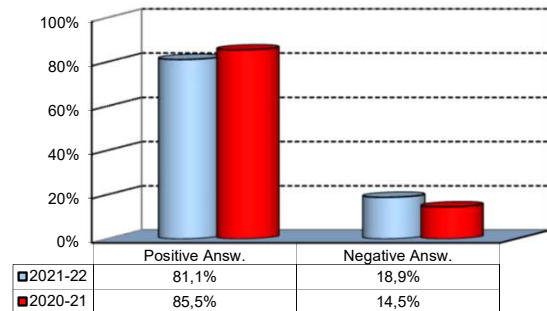
Please select the course or courses in the MSc program in which you encountered overlaps or unnecessary repetitions (multiple answers admitted)

Course	a. v.	%
ECONOMETRICS FOR BIG DATA - ECONOMETRICS	4	20,0%
COMPUTER PROGRAMMING AND DATABASE SYSTEMS - FUNDAMENTALS OF COMPUTER SCIENCE	2	10,0%
INNOVATION AND MARKETING ANALYTICS - MARKETING ANALYTICS	2	10,0%
BUSINESS ANALYTICS - ECONOMETRICS	2	10,0%
Other	10	50,0%
TOTAL	20	100,0%

Study Experience

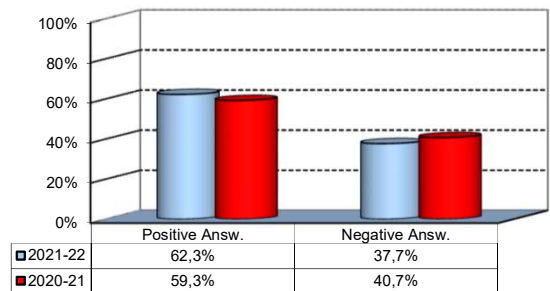
6) Do you think that the overall study load was compatible with the length of the program?

Answers	a. v.	%
A - Definitely YES	15	28,3%
B - More YES than NO	28	52,8%
C - More NO than YES	9	17,0%
D - Definitely NO	1	1,9%
Total	53	100%
NA	0	



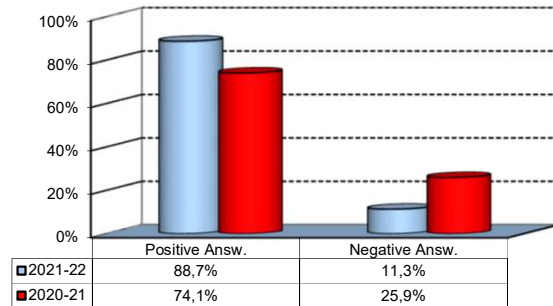
7) Was the coordination of the study program appropriately managed by the Program Director?

Answers	a. v.	%
A - Definitely YES	11	20,8%
B - More YES than NO	22	41,5%
C - More NO than YES	17	32,1%
D - Definitely NO	3	5,7%
Total	53	100%
NA	0	



8) On the whole, were the classroom climate and relationships with your classmates positive and able to enrich your personal experience?

Answers	a. v.	%
A - Definitely YES	29	54,7%
B - More YES than NO	18	34,0%
C - More NO than YES	4	7,5%
D - Definitely NO	2	3,8%
Total	53	100%
NA	0	

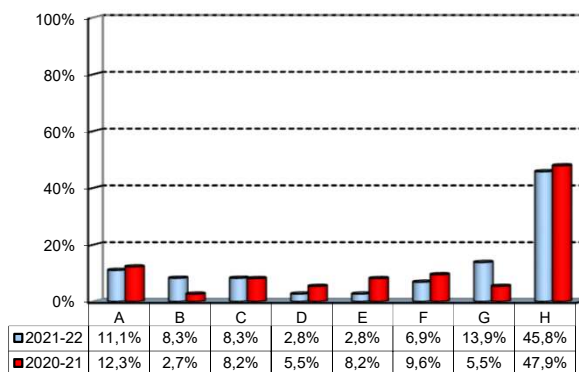


Extracurricular Activities

1) Which of the following extracurricular activities did you attend during your study program?

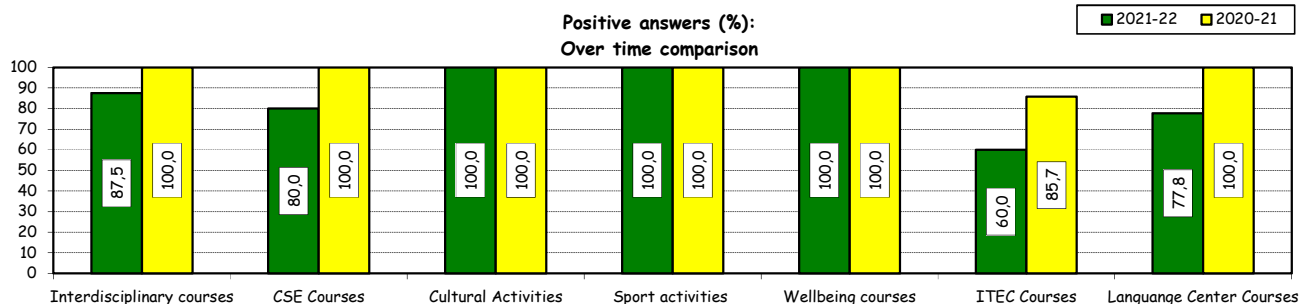
(multiple answers admitted)

Answers	a.v.	%
A - Interdisciplinary courses ("Sapere a tutto campo")	8	11,1%
B - Counseling and Self-Empowerment courses CSE	6	8,3%
C - Cultural Activities (visit museums, concerts, theatre and cinema, various issues)	6	8,3%
D - Sport activities	2	2,8%
E - Wellbeing courses	2	2,8%
F - Courses offered by ITEC	5	6,9%
G - Courses offered by Language Center	10	13,9%
H - None	33	45,8%
Total	72	100%
NA	0	



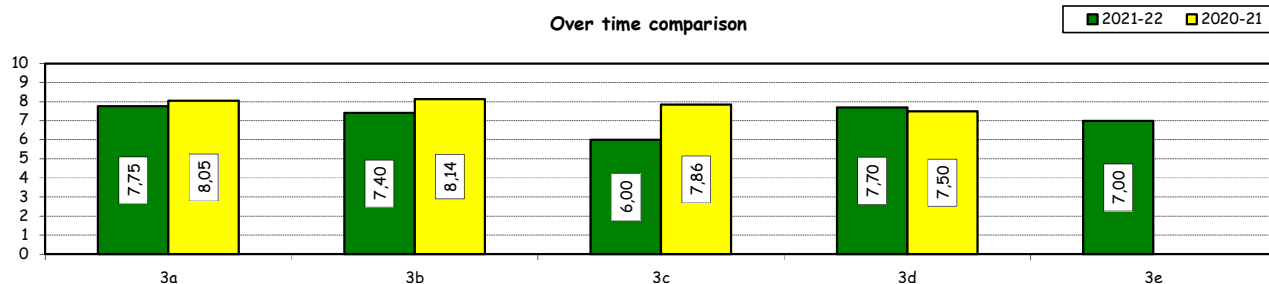
2) Do you think that the activities you took part in contributed to your cultural/educational enrichment?

	Definitely YES		More YES than NO		More NO than YES		Definitely NO		Total		NA
	a.v.	%	a.v.	%	a.v.	%	a.v.	%	a.v.	%	
A - Interdisciplinary courses	4	50,0	3	37,5	1	12,5	0	0,0	8	100,0	0
B - CSE courses	2	40,0	2	40,0	0	0,0	1	20,0	5	100,0	1
C - Cultural Activities	0	0,0	6	100,0	0	0,0	0	0,0	6	100,0	0
D - Sport activities	1	50,0	1	50,0	0	0,0	0	0,0	2	100,0	0
E - Wellbeing courses	1	50,0	1	50,0	0	0,0	0	0,0	2	100,0	0
F - ITEC courses	1	20,0	2	40,0	1	20,0	1	20,0	5	100,0	0
G -Language Center courses	2	22,2	5	55,6	1	11,1	1	11,1	9	100,0	1



How would you evaluate:

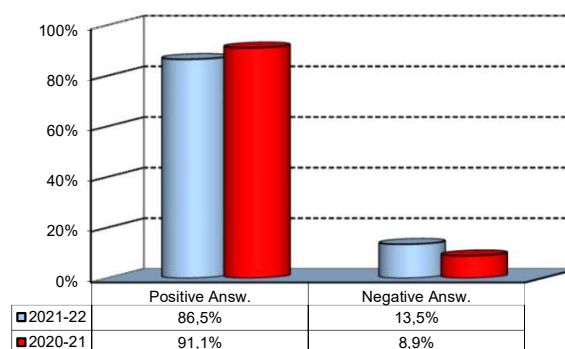
Item	Answers	Negative				Positive				Total		NA
		1-2		3-4-5		6-7-8		9-10		a.v.	%	
		a.v.	%	a.v.	%	a.v.	%	a.v.	%			
3a) The range and interest of programmes offered		0	0,0	2	10,0	10	50,0	8	40,0	20	100,0	0
3b) The support you received from the Campus Life Office		1	5,0	2	10,0	10	50,0	7	35,0	20	100,0	0
3c) The support you received from ITEC		1	20,0	1	20,0	2	40,0	1	20,0	5	100,0	0
3d) The support you received from Language Center		0	0,0	2	20,0	4	40,0	4	40,0	10	100,0	0
3e) The support you received from Bocconi Sport Team		0	0,0	0	0,0	2	100,0	0	0,0	2	100,0	0



Degree Thesis

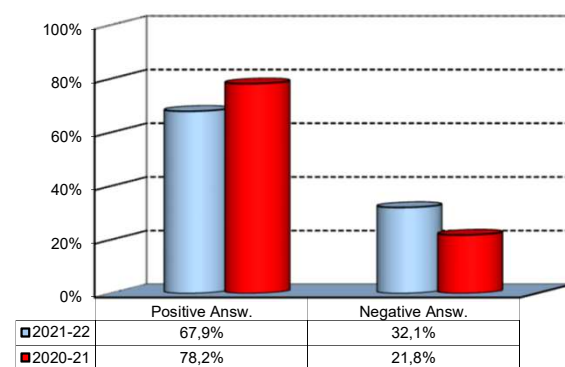
1) Do you think that the supervision and the assistance for preparing for your thesis were appropriate?

Answers	a. v.	%
A - Definitely YES	37	71,2%
B - More YES than NO	8	15,4%
C - More NO than YES	6	11,5%
D - Definitely NO	1	1,9%
Total	52	100%
NA	1	



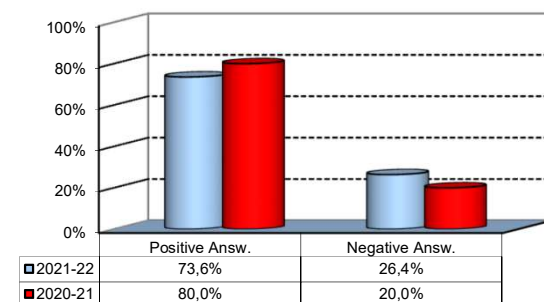
2) Do you think that the facilities provided by the University (library, computer labs) adequately supported preparation for your thesis?

Answers	a. v.	%
A - Definitely YES	16	30,2%
B - More YES than NO	20	37,7%
C - More NO than YES	12	22,6%
D - Definitely NO	5	9,4%
Total	53	100%
NA	0	



3) Do you think that your thesis was a useful experience for completing your education and a way to verify your planning and writing skills?

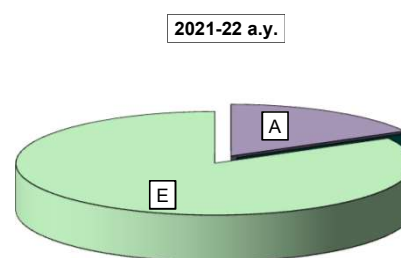
Answers	a. v.	%
A - Definitely YES	24	45,3%
B - More YES than NO	15	28,3%
C - More NO than YES	10	18,9%
D - Definitely NO	4	7,5%
Total	53	100%
NA	0	



Experience Of Studying Abroad

1) Please select the program you participated in:

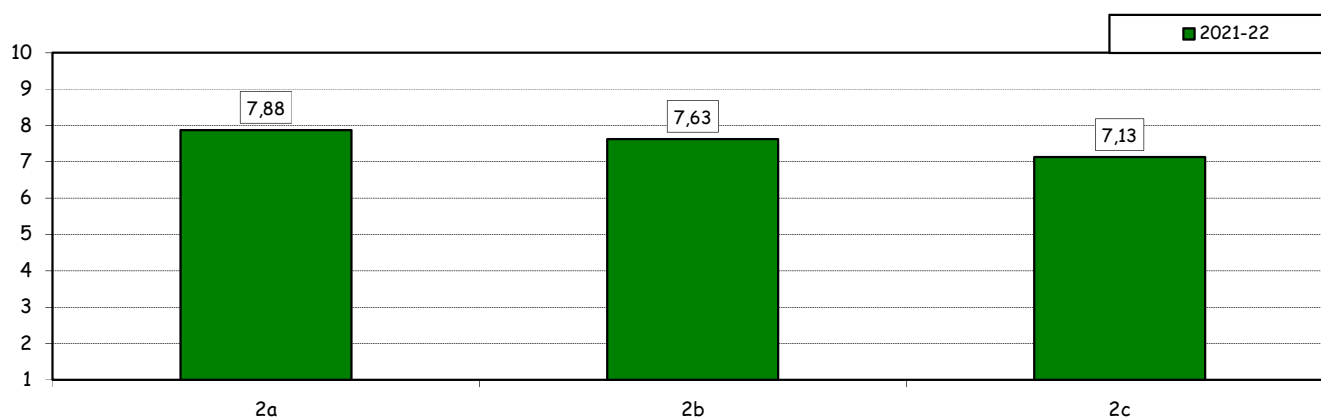
Answers	a.v.	%	
		2021-22	2020-21
A - Exchange	9	17,0	0,0
B - CEMS-MIM	0	0,0	0,0
C- Double Degree	0	0,0	0,0
D - Free-Mover	0	0,0	0,0
E- None	44	83,0	100,0
Total	53	100,0	100,0
NA	0		



How would you evaluate:

(only A, B, C or E answers to item no.1)

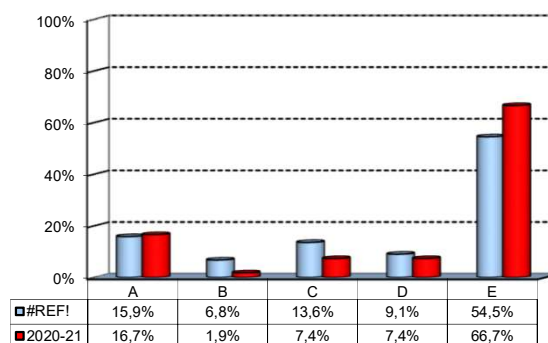
Item	Answers	Negative				Positive				Total		N.A. a.v.
		1-2		3-4-5		6-7-8		9-10		a.v.	%	
		a.v.	%	a.v.	%	a.v.	%	a.v.	%			
2a) Quantity and completeness of information provided through: 'International Week', emails, brochures, International Relations Service web page.		0	0,0	0	0,0	5	62,5	3	37,5	8	100,0	1
2b) The range and interest of programs offered.		0	0,0	1	12,5	4	50,0	3	37,5	8	100,0	1
2c) The support you received from Bocconi International Relations.		0	0,0	2	25,0	3	37,5	3	37,5	8	100,0	1



(In case of answer "E" to item no.1)

3) Please indicate why you did not attend a period of study abroad (select all relevant reasons):

Answers	a.v.	%
A-Lack of interest in this kind of experience	7	15,9%
B-Absence of the requirements needed for participation in the program selected	3	6,8%
C-Rejection of your application	6	13,6%
D-Lack of time during the period of study	4	9,1%
E-Other (personal, family, organizational reasons, etc.)	24	54,5%
Total	44	100%
NA	0	



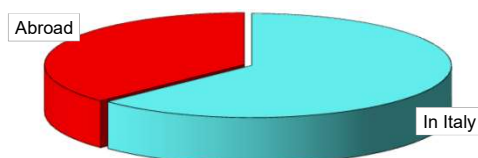
Internship Activities

1) Which activity recognized in your curriculum did you complete during the MSc program?

Answers	a.v.	%	
		2021-22	2020-21
A - Internship/Other job experience	51	89,5	52,5
B - Alternative Activity [^]	6	10,5	47,5
Total	57	100,0	100,0
NA	0		

2) Where did you complete the internship recognized by the Bachelor program?

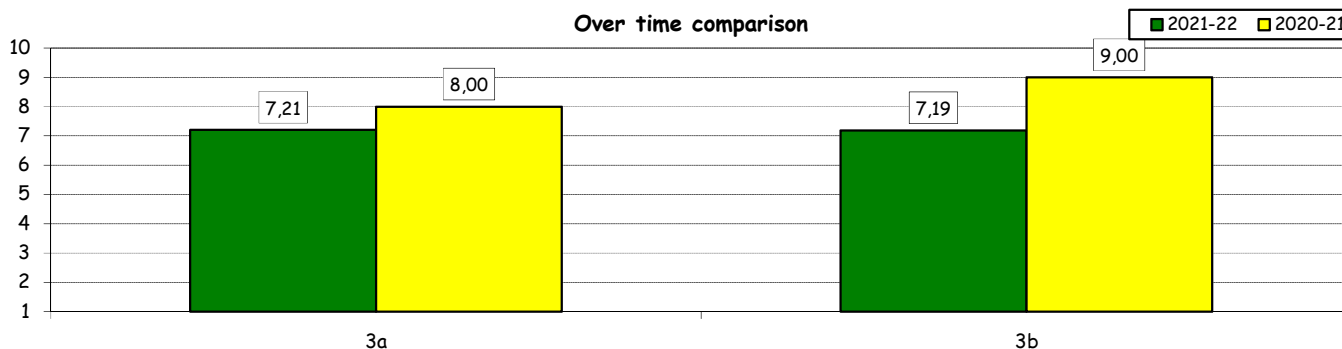
Answers	a.v.	%	
		2021-22	2020-21
In Italy	32	62,7%	95,2%
Abroad	19	37,3%	4,8%
Total	51	100%	100%
NA	0		



How would you evaluate:

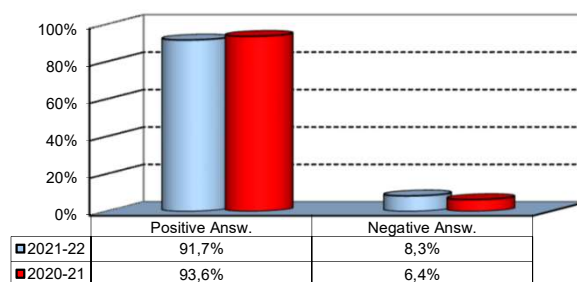
Item	Answers	Negative				Positive				Total	N.A.
		1-2		3-4-5		6-7-8		9-10			
		a.v.	%	a.v.	%	a.v.	%	a.v.	%		
3a) The number and variety of opportunities offered.	3	6,3	7	14,6	22	45,8	16	33,3	48	100,0	3
3b) The support you received from the Internship Office.	4	8,5	6	12,8	19	40,4	18	38,3	47	100,0	4

Over time comparison



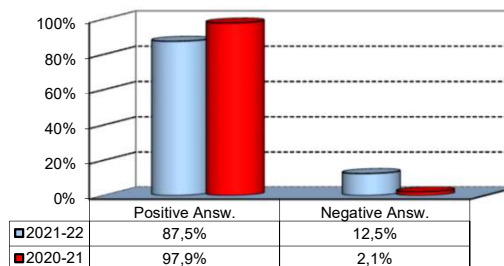
4) Would you positively evaluate this experience?

Answers	a.v.	%
A - Definitely YES	30	62,5%
B - More YES than NO	14	29,2%
C - More NO than YES	2	4,2%
D - Definitely NO	2	4,2%
Total	48	100%
NA	3	



5) Do you think that the qualifications you acquired while attending the MSc program were appropriate to perform this activity?

Answers	a.v.	%
A - Definitely YES	26	54,2%
B - More YES than NO	16	33,3%
C - More NO than YES	3	6,3%
D - Definitely NO	3	6,3%
Total	48	100%
NA	3	



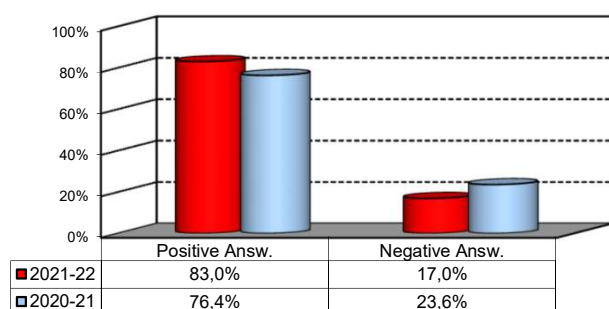
[^]: During the pandemic, students were given the opportunity to replace the mandatory internship with an alternative activity called Career Start Pack. It consists in an elective exam integrated with mandatory participation in the virtual career orientation path

General satisfaction and short-term plans

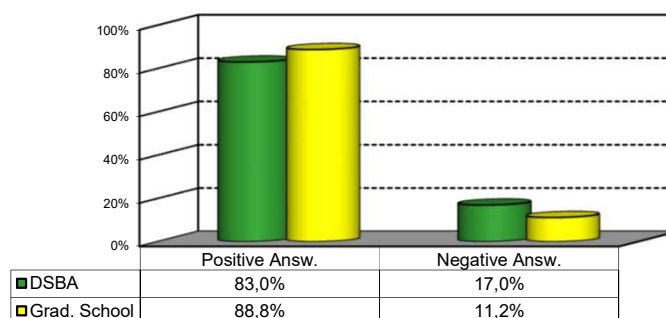
1) Are you satisfied overall with the study program you attended?

Answers	Italian		Non Italian		Total	
	a.v.	%	a.v.	%	a.v.	%
A - Definitely YES	19	51,4%	3	18,8%	22	41,5%
B - More YES than NO	14	37,8%	8	50,0%	22	41,5%
C - More NO than YES	4	10,8%	4	25,0%	8	15,1%
D - Definitely NO	0	0,0%	1	6,3%	1	1,9%
Total	37	100%	16	100%	53	100%
NA	0		0		0	

Over time comparison



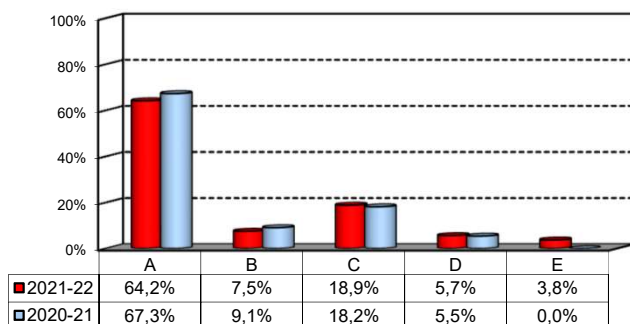
Comparison with the overall School data



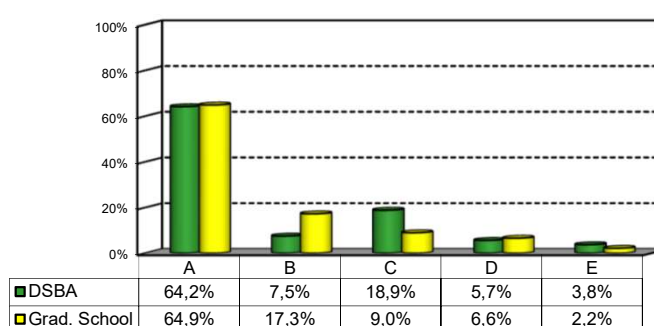
2a) If you could go back in time, would you enroll in the University again?

Answers	Italian		Non Italian		Total	
	v.a.	%	v.a.	%	v.a.	%
A-YES, in the same program at this University	27	73,0%	7	43,8%	34	64,2%
B-YES, in another program at this University	4	10,8%	0	0,0%	4	7,5%
C-YES, in the same program but at another University	4	10,8%	6	37,5%	10	18,9%
D-YES, in another program at another University	1	2,7%	2	12,5%	3	5,7%
E-NO, I would not enrol in university anymore	1	2,7%	1	6,3%	2	3,8%
Total	37	100%	16	100%	53	100%
NA	0		0		0	

Over time comparison



Comparison with the overall School data



General satisfaction and short-term plans

(In case of answer "B" to item no.2a)

2b) Which program would you enroll at this University?

MSc	a.v.	%
ACME	0	0,0%
AFC	1	25,0%
FIN	2	50,0%
CLELI	0	0,0%
ESS	0	0,0%
EMIT	0	0,0%
GIO	0	0,0%
IM	0	0,0%
M	1	25,0%
MM	0	0,0%
CYBER	0	0,0%
Total	4	100%
NA	0	

2c) Why would you make a different choice?

(In case of answer "B", "C", "D" or "E" to item no.2a)

Answers	a.v.	% 2021-22	% 2020-21
A - My interest has changed over time / I discovered that I have different attitudes	5	29,4%	14,3%
B -The MS program did not satisfy my expectations	4	23,5%	64,3%
C I would have preferred to attend the same MS program but taught in English	0	0,0%	0,0%
D - Other reasons	8	47,1%	21,4%
Total	17	100%	100%
NA	2		

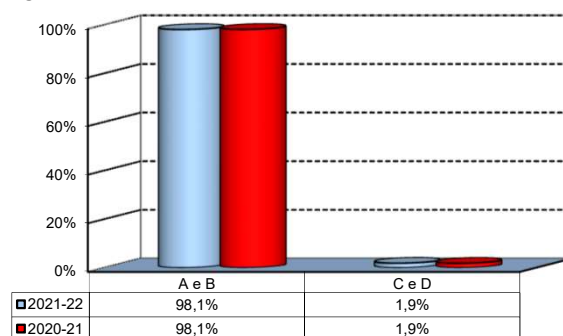
D- Other reasons:

Andrei all'estero dove c'e' un collegamento piu' diretto con il mondo del lavoro di quel determinato paese.
Corso di studi poco pratico
I would like to further enlarge my knowledge but definitely not at Bocconi. I found the courses unstructured, of low quality and overall expensive for the experience. Definitely would not recommend anyone.
Il sistema a graduatorie non rispecchia i miei valori, nonostante sia comprensibile. A tornare indietro di fronte alla scelta si o no di fare questo corso forse avrei abbandonato. e' un sistema per cui devi accontentarti di quello che ti capita.
Im still interested in this field and I will continue it for my PhD but Bocconi was a bad experience for me, I never received any support from this place, its not as international as you try to tell. for me it was a mistake to come here
In general terms, the most important thing in defining your long-term salary is the country you are in. Italy is a wonderful country to live in, but not to work in.
The program was not satisfying. My learning curve increased only on the second semester of the first year. Some of the professors were not highly qualified, the electives were not interesting at all from a data science perspective

Infrastructure: Classrooms, Library And Facilities

1) What is your opinion about the classrooms where lessons and other teaching activities have been held?*

Answers	a.v.	%
A - Always or nearly always adequate	36	69,2%
B - Often adequate	15	28,8%
C - Rarely adequate	0	0,0%
D - Never adequate	1	1,9%
E - I did not use them	0	0,0%
Total	52	100%
NA	1	

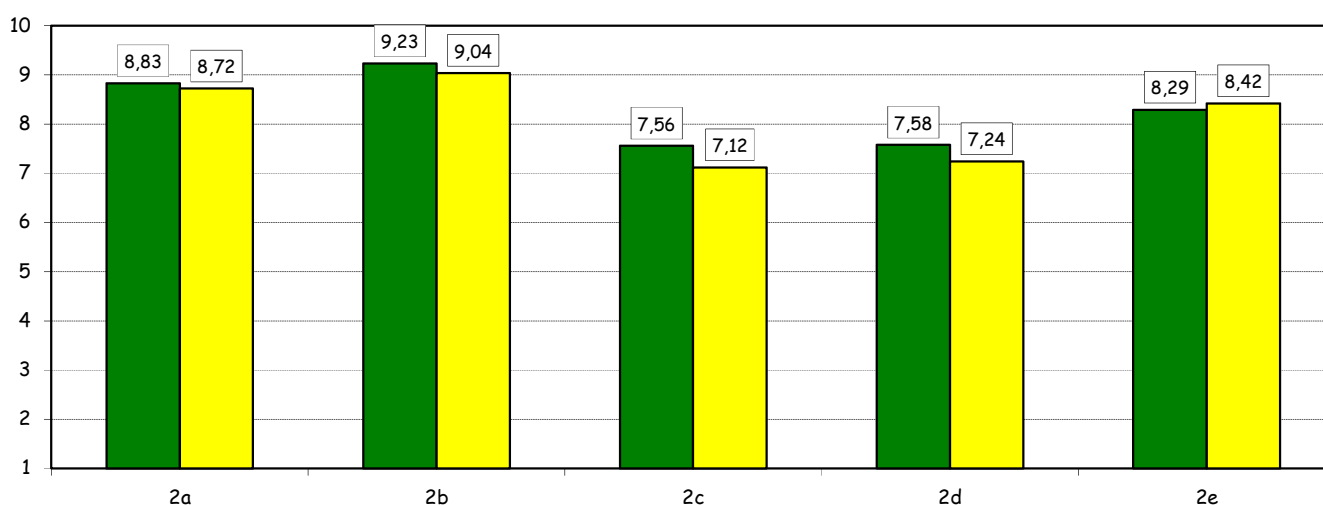
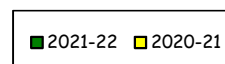


2) How would you evaluate:

(In case of answer "A", "B", "C" or "D" to item no.1)

Item	Answers	Negative				Positive				Total		NA	N.R.
		1-2		3-4-5		6-7-8		9-10		a.v.	%		
		a.v.	%	a.v.	%	a.v.	%	a.v.	%				
a) The adequacy of the audio and multimedia systems (e.g. instructor's computer, projectors, video players) installed in the classrooms.		0	0,0	1	1,9	17	32,7	34	65,4	52	100,0		1
b) The cleanliness of classrooms and of other common areas on campus (corridors, halls, study rooms).		0	0,0	1	1,9	9	17,3	42	80,8	52	100,0		1
c) The adequacy of the amount of areas/seats reserved to individual study in the University Library.		2	3,8	8	15,4	19	36,5	23	44,2	52	100,0	1	1
d) The adequacy of the amount of areas/seats reserved to individual study in other buildings on campus.		2	3,8	6	11,5	23	44,2	21	40,4	52	100,0	0	1
e) The clarity and adequacy of the signage system on campus.		1	1,9	3	5,8	20	38,5	28	53,8	52	100,0		1

Over time comparison

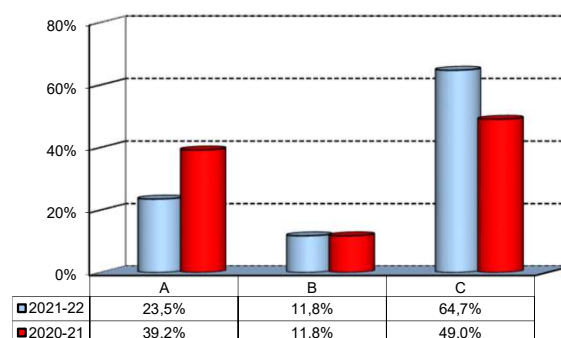


(*): the percentage shown on the graphs is calculated by excluding the responses of those who declare that they have not used the service.

Infrastructure: Classrooms, Library And Facilities

3) What is your overall opinion on the PC Labs and IT facilities provided by the University?

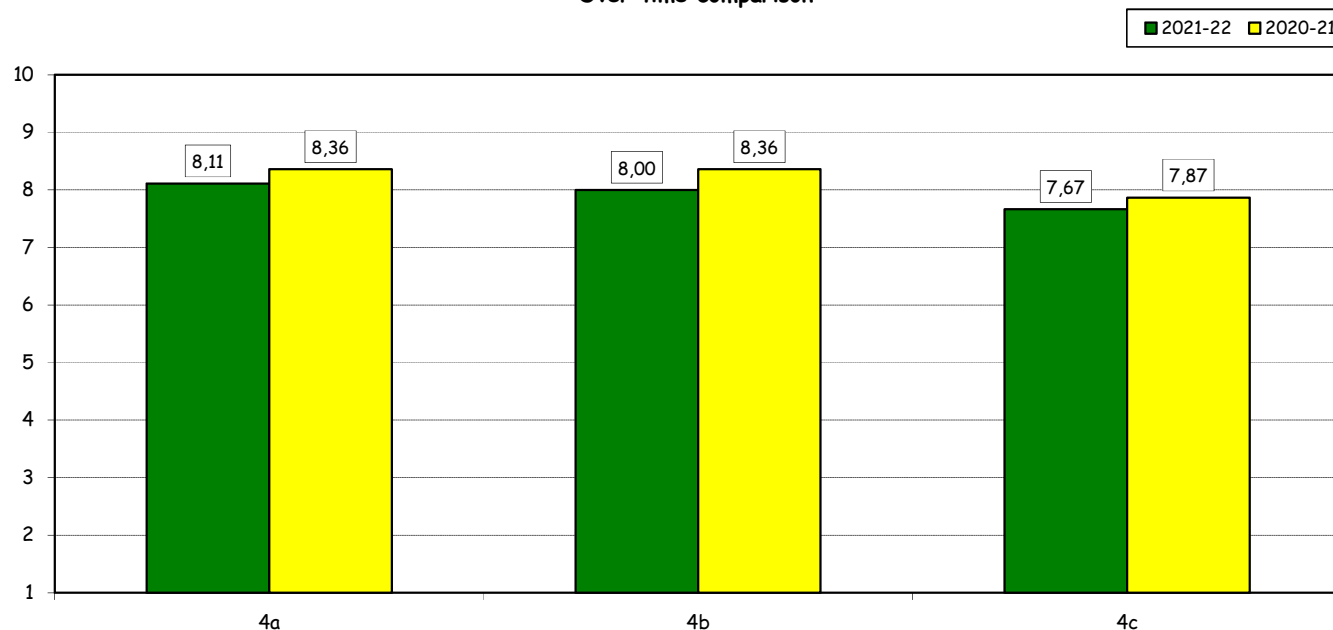
Answers	a.v.	%
A- Adequate in number	12	23,5%
B- Inadequate in number	6	11,8%
C- Never used	33	64,7%
Total	51	100%
NA	2	



4) How do you evaluate:

Item	Answers	Negative				Positive				Total	N.R.	
		1-2		3-4-5		6-7-8		9-10				
		a.v.	%	a.v.	%	a.v.	%	a.v.	%			
a) The availability of technical staff supporting students (Tutors) in PC Labs.*		0	0,0	0	0,0	11	61,1	7	38,9	18	100,0	0
b) The convenience of the PC Labs' opening hours.*		0	0,0	0	0,0	12	66,7	6	33,3	18	100,0	0
c) The level of accessibility and usability of the University's IT services (Internet access points, Punto Blu, Virtual Punto Blu, wireless connection).		1	2,0	8	15,7	20	39,2	22	43,1	51	100,0	0

Over time comparison

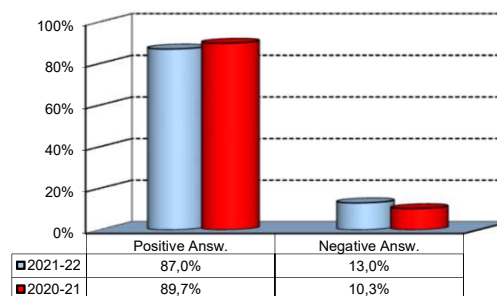


(*): Only in case of answer "A" or "B" to item no.3

Infrastructure: Classrooms, Library And Facilities

5) What is your overall opinion on the Library's services, such as support for individual study?*

Answers	a.v.	%
A - Very Positive	17	32,7%
B - Quite positive	23	44,2%
C - Quite negative	6	11,5%
D - Very Negative	0	0,0%
E - Never used	6	11,5%
Total	52	100%
NA	1	

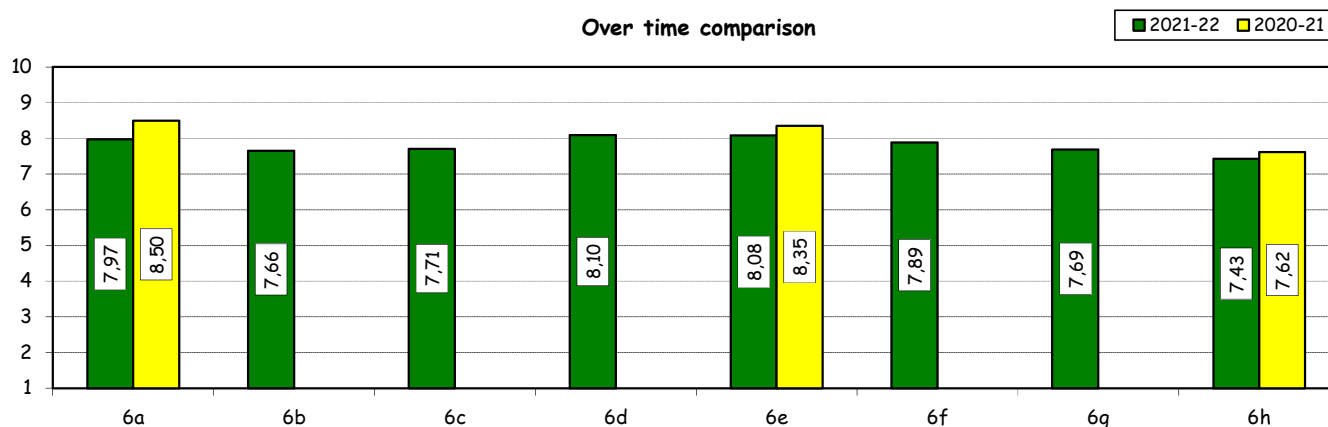


6) How would you evaluate:

(In case of answer "A", "B", "C" or "D" to item no. 5)

Item	Answers	Negative				Positive				Total		N.A. a.v.
		1-2		3-4-5		6-7-8		9-10		a.v.	%	
		a.v.	%	a.v.	%	a.v.	%	a.v.	%	a.v.	%	
a) The convenience of the Library's opening hours and access to its main services.		0	0,0	3	7,9	23	60,5	12	31,6	38	100,0	8
b) Range of subjects covered in hardcopy collections (books and journals) compared to your needs of study and research		1	2,6	4	10,5	20	52,6	13	34,2	38	100,0	8
c) The relevance and updating of online collections (e-books, e-journals, databases) compared to your needs of study and research		1	2,6	1	2,6	26	68,4	10	26,3	38	100,0	8
d) The ease of use of search tools available on the Library website		0	0,0	1	3,2	18	58,1	12	38,7	31	100,0	15
e) The assistance provided by the Library staff		1	2,8	2	5,6	18	50,0	15	41,7	36	100,0	10
f) Availability of documents (textbooks, articles, chapters, case studies, etc.) used in individual courses		1	2,8	2	5,6	21	58,3	12	33,3	36	100,0	10
g) The Library website as a source of information on the services offered and as a point of access for resources		1	2,9	3	8,6	17	48,6	14	40,0	35	100,0	11
h) The usefulness of workshops offered by the Library to understand how to use the resources available (catalogues, e-journals, databases, etc.)		0	0,0	4	14,3	17	60,7	7	25,0	28	100,0	18

Over time comparison



(*): the percentage shown on the graphs is calculated by excluding the responses of those who declare that they have not used the service.