

EVALUATION OF THE DEGREE PROGRAM AND THE UNIVERSITY EXPERIENCE

MASTER OF SCIENCE IN ECONOMICS AND MANAGEMENT OF GOVERNMENT AND INTERNATIONAL ORGANIZATIONS

SURVEY PERIOD: JULY 2022 - JULY 2023

N° QUESTIONNAIRES PROCESSED: 94

N° OF GRADUATE STUDENTS: 95

RESPONSE RATE: 98,9%



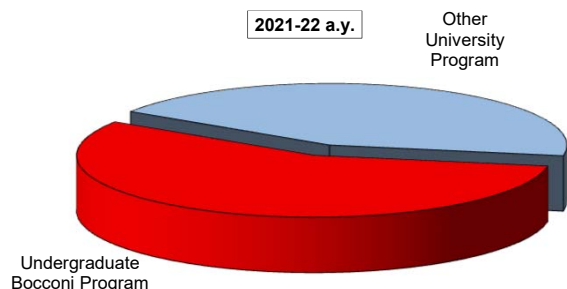
EVALUATION OF UNIVERSITY EXPERIENCE

Economics and Management of Government and International Organizations

General information

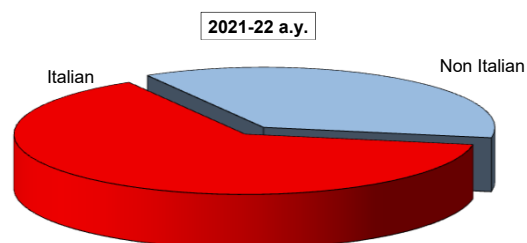
Undergraduate Career

Answers	a. v.	%	
		2021-22	2020-21
Undergraduate Bocconi Program	53	56,4	60,7
Other University Program	41	43,6	39,3
Total	94	100,0	100,0
NA	0		



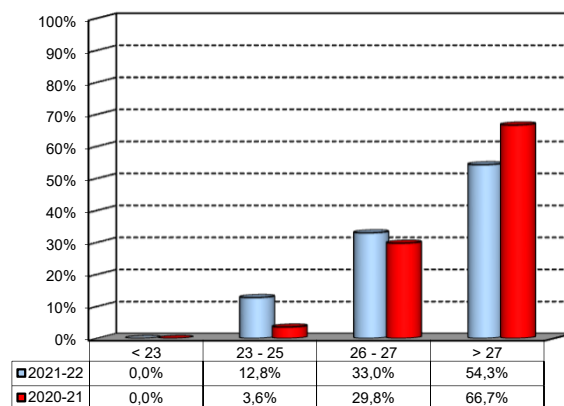
Nationality

Answers	a. v.	%	
		2021-22	2020-21
Italian	60	63,8%	76,2%
Non Italian	34	36,2%	23,8%
Total	94	100%	100%
NA	0		



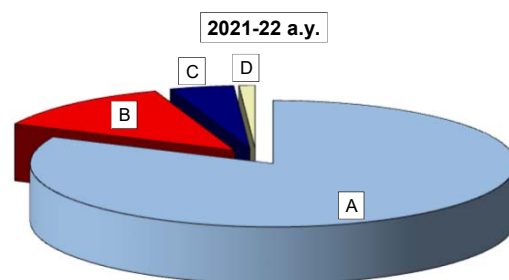
Average mark of the exams passed: (approximate average expressed in 30/30)

Answers	a. v.	%
meno di 23	0	0,0%
23-25	12	12,8%
26-27	31	33,0%
maggiore di 27	51	54,3%
Total	94	100%
NA	0	



How many of the courses included in your curriculum did you attend regularly?

Answers	a. v.	%	
		2021-22	2020-21
A - More than 75%	77	81,9	85,7
B - Between 50 and 75%	12	12,8	9,5
C - Between 25 and 50%	4	4,3	2,4
D - Less than 25%	1	1,1	2,4
Total	94	100,0	100,0
NA	0		

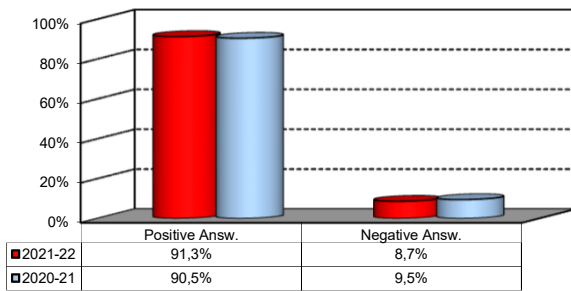


Study Experience

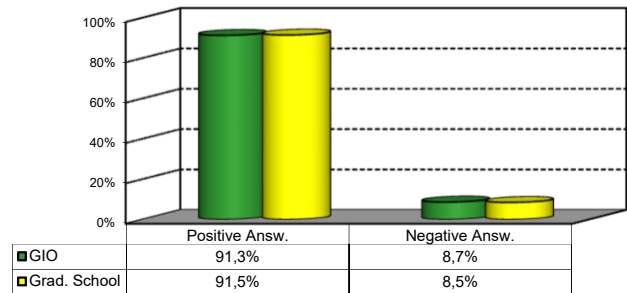
1) On the whole, do you think that the MSc program you attended at Bocconi enabled in-depth study of topics in both a theoretical and a practical sense?

Answers	Italian		Non Italian		Total	
	a.v.	%	a.v.	%	a.v.	%
A - Definitely YES	21	35,0%	11	34,4%	32	34,8%
B - More YES than NO	35	58,3%	17	53,1%	52	56,5%
C - More NO than YES	4	6,7%	4	12,5%	8	8,7%
D - Definitely NO	0	0,0%	0	0,0%	0	0,0%
Total	60	100%	32	100%	92	100%
NA	0		2			

Over time comparison



Comparison with the overall School data



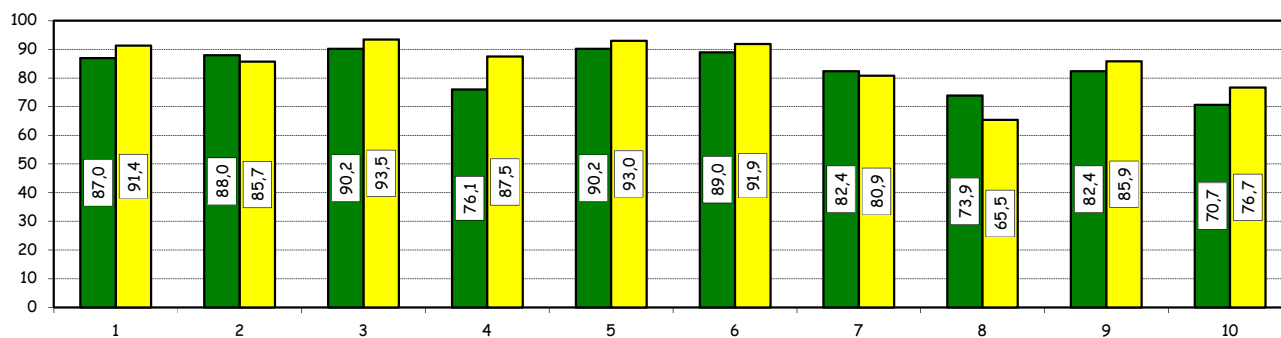
Study Experience

2) Do you think that your course of study at Bocconi has contributed to the development of the following skills?

Soft Skill	Item	Definitely YES		More YES than NO		More NO than YES		Definitely NO		Total		n.a.
		a.v.	%	a.v.	%	a.v.	%	a.v.	%	a.v.	%	a.v.
1	Ability to work in team	50	54,3	30	32,6	12	13,0	0	0,0	92	100,0	2
2	Interpersonal skills	39	42,4	42	45,7	11	12,0	0	0,0	92	100,0	2
3	Organizational skills	45	48,9	38	41,3	9	9,8	0	0,0	92	100,0	2
4	Critical thinking skills	33	35,9	37	40,2	15	16,3	7	7,6	92	100,0	2
5	Ability to analyze and select information	43	46,7	40	43,5	9	9,8	0	0,0	92	100,0	2
6	Problem-solving ability	36	39,6	45	49,5	8	8,8	2	2,2	91	100,0	3
7	Written communication skills	42	46,2	33	36,3	14	15,4	2	2,2	91	100,0	3
8	Verbal communication skills	24	26,1	44	47,8	17	18,5	7	7,6	92	100,0	2
9	Ability to cope with stress	37	40,7	38	41,8	13	14,3	3	3,3	91	100,0	3
10	Entrepreneurial spirit	22	23,9	43	46,7	21	22,8	6	6,5	92	100,0	2

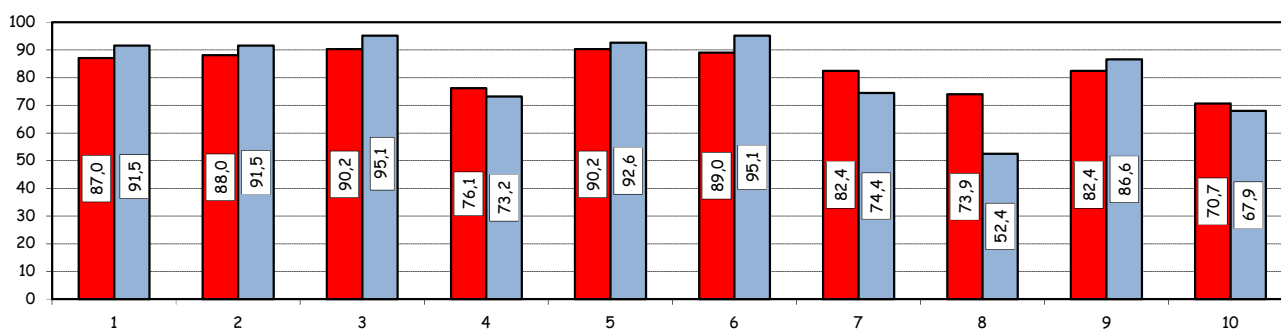
Positive answers (%):
comparison with the overall School data

■ GIO ■ Grad. School



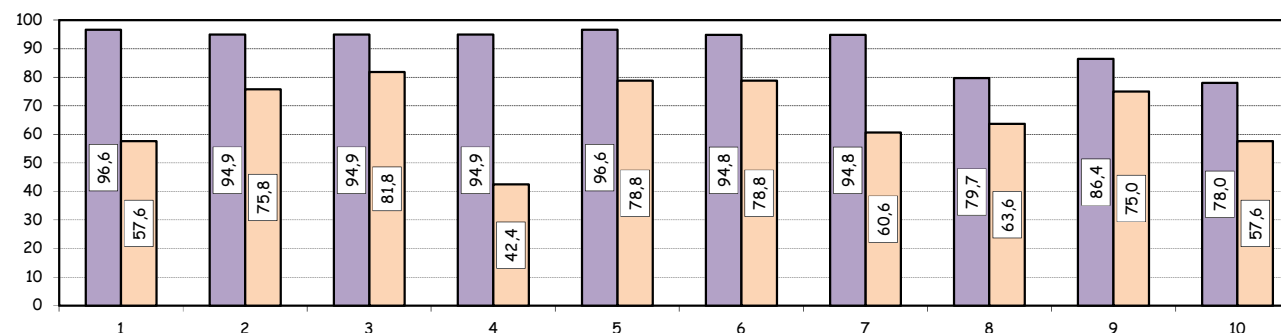
Positive answers (%):
Over time comparison

■ 2021-22 ■ 2020-21



Positive answers (%):
comparison based on nationality of student

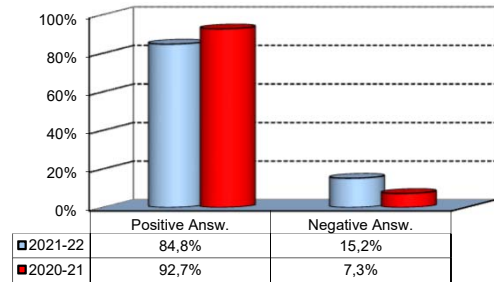
■ Italian ■ Non Italian



Study Experience

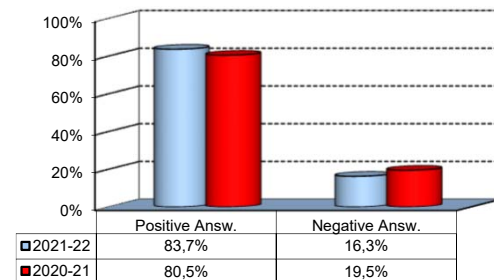
3) Do you think that teaching activities in the MSc program were structured in an active manner (frequent use of teamwork, case studies, assignments, etc.)?

Answers	a.v.	%
A - Definitely YES	33	35,9%
B - More YES than NO	45	48,9%
C - More NO than YES	13	14,1%
D - Definitely NO	1	1,1%
Total	92	100%
NA	2	



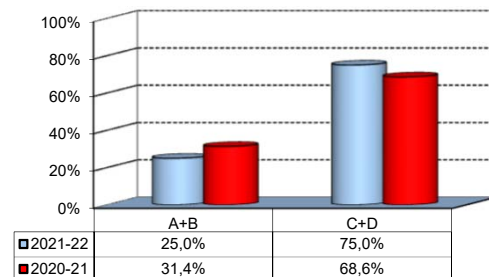
4) Do you think that the courses in your curriculum were adequately coordinated with each other?

Answers	a.v.	%
A - Definitely YES	25	27,2%
B - More YES than NO	52	56,5%
C - More NO than YES	13	14,1%
D - Definitely NO	2	2,2%
Total	92	100%
NA	2	



5) During the MSc program, did you notice any unnecessary overlaps or repetitions of subjects and content with what you studied during your undergraduate program?

Answers	a.v.	%
A-Very often	3	5,8%
B-Often	10	19,2%
C-Hardly ever	30	57,7%
D-Never	9	17,3%
Total	52	100%
NA	42	



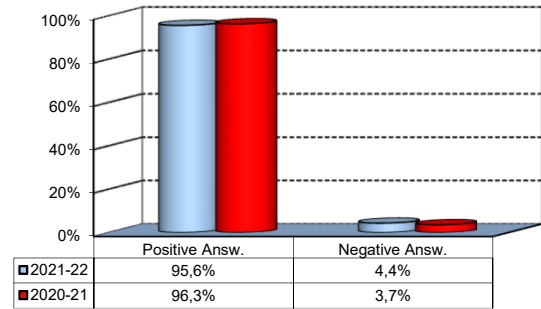
Please select the course or courses in the MSc program in which you encountered overlaps or unnecessary repetitions (multiple answers admitted)

Course	a.v.	%
POLICY ANALYSIS AND EVALUATION - POLICY EVALUATION	5	15,2%
STRATEGIC AND HR MANAGEMENT IN PUBLIC ORGANIZATIONS - ECONOMIA AZIENDALE E GESTIONE DELLE IMPRESE	2	6,1%
LINGUA SPAGNOLA - SPAGNOLO	2	6,1%
QUANTITATIVE METHODS FOR SOCIAL SCIENCES - STATISTICA	2	6,1%
Other	22	66,7%
TOTAL	33	100,0%

Study Experience

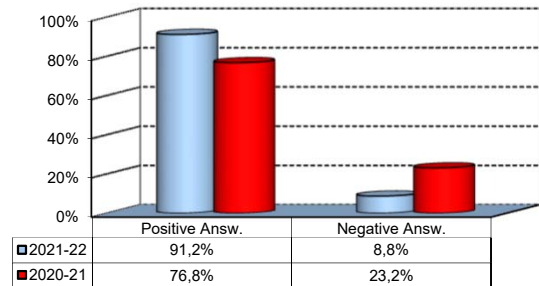
6) Do you think that the overall study load was compatible with the length of the program?

Answers	a.v.	%
A - Definitely YES	44	48,4%
B - More YES than NO	43	47,3%
C - More NO than YES	2	2,2%
D - Definitely NO	2	2,2%
Total	91	100%
NA	3	



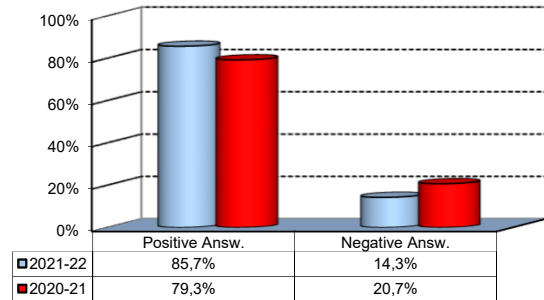
7) Was the coordination of the study program appropriately managed by the Program Director?

Answers	a.v.	%
A - Definitely YES	35	38,5%
B - More YES than NO	48	52,7%
C - More NO than YES	6	6,6%
D - Definitely NO	2	2,2%
Total	91	100%
NA	3	



8) On the whole, were the classroom climate and relationships with your classmates positive and able to enrich your personal experience?

Answers	a.v.	%
A - Definitely YES	40	44,0%
B - More YES than NO	38	41,8%
C - More NO than YES	11	12,1%
D - Definitely NO	2	2,2%
Total	91	100%
NA	3	

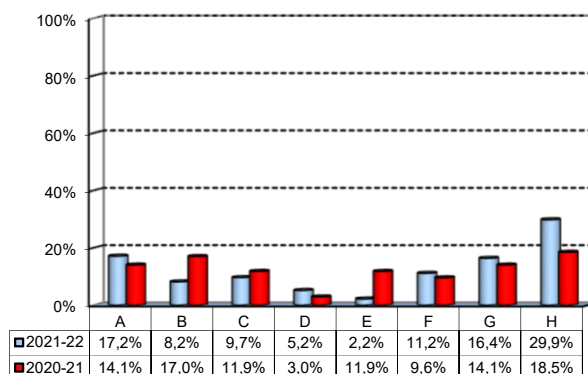


Extracurricular Activities

1) Which of the following extracurricular activities did you attend during your study program?

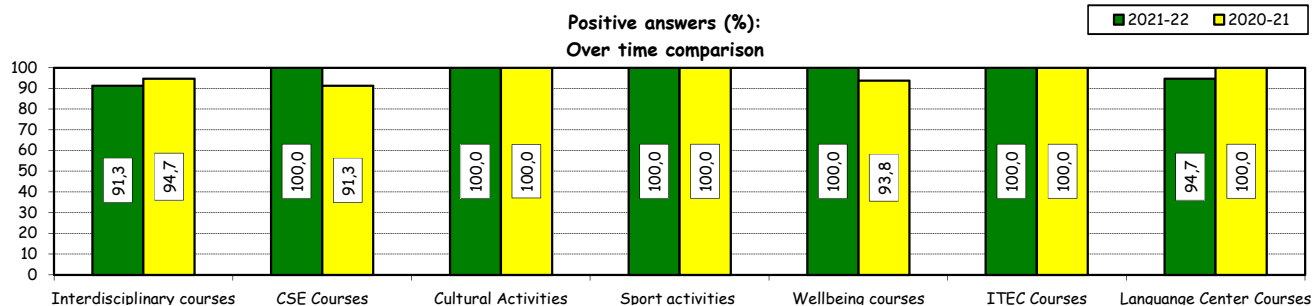
(multiple answers admitted)

Answers	a.v.	%
A - Interdisciplinary courses ("Sapere a tutto campo")	23	17,2%
B - Counseling and Self-Empowerment courses CSE	11	8,2%
C - Cultural Activities (visit museums, concerts, theatre and cinema, various issues)	13	9,7%
D - Sport activities	7	5,2%
E - Wellbeing courses	3	2,2%
F - Courses offered by ITEC	15	11,2%
G - Courses offered by Language Center	22	16,4%
H - None	40	29,9%
Total	134	100%
NA	0	



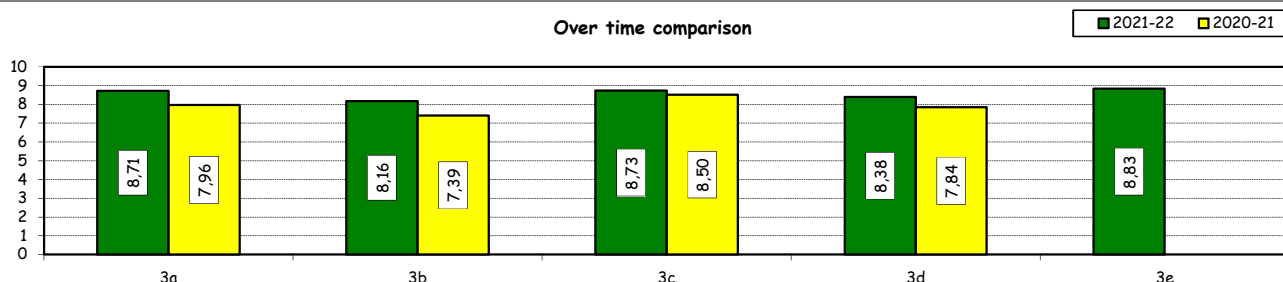
2) Do you think that the activities you took part in contributed to your cultural/educational enrichment?

	Definitely YES		More YES than NO		More NO than YES		Definitely NO		Total		NA
	a.v.	%	a.v.	%	a.v.	%	a.v.	%	a.v.	%	a.v.
A - Interdisciplinary courses	15	65,2	6	26,1	2	8,7	0	0,0	23	100,0	0
B - CSE courses	10	90,9	1	9,1	0	0,0	0	0,0	11	100,0	0
C - Cultural Activities	9	69,2	4	30,8	0	0,0	0	0,0	13	100,0	0
D - Sport activities	4	57,1	3	42,9	0	0,0	0	0,0	7	100,0	0
E - Wellbeing courses	3	100,0	0	0,0	0	0,0	0	0,0	3	100,0	0
F - ITEC courses	8	57,1	6	42,9	0	0,0	0	0,0	14	100,0	1
G - Language Center courses	13	68,4	5	26,3	1	5,3	0	0,0	19	100,0	3



How would you evaluate:

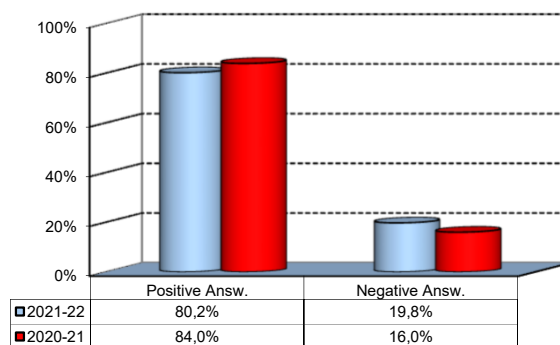
Item	Answers		Negative				Positive				Total		NA
			1-2		3-4-5		6-7-8		9-10				
	a.v.	%	a.v.	%	a.v.	%	a.v.	%	a.v.	%	a.v.	%	a.v.
3a) The range and interest of programmes offered	0	0,0	1	2,0	15	29,4	35	68,6	51	100,0	3		
3b) The support you received from the Campus Life Office	0	0,0	4	8,0	22	44,0	24	48,0	50	100,0	4		
3c) The support you received from ITEC	0	0,0	0	0,0	5	33,3	10	66,7	15	100,0	0		
3d) The support you received from Language Center	0	0,0	1	4,8	11	52,4	9	42,9	21	100,0	1		
3e) The support you received from Bocconi Sport Team	0	0,0	0	0,0	2	33,3	4	66,7	6	100,0	1		



Degree Thesis

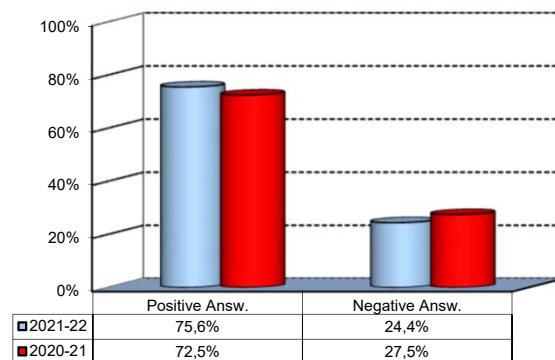
1) Do you think that the supervision and the assistance for preparing for your thesis were appropriate?

Answers	a.v.	%
A - Definitely YES	44	48,4%
B - More YES than NO	29	31,9%
C - More NO than YES	13	14,3%
D - Definitely NO	5	5,5%
Total	91	100%
NA	3	



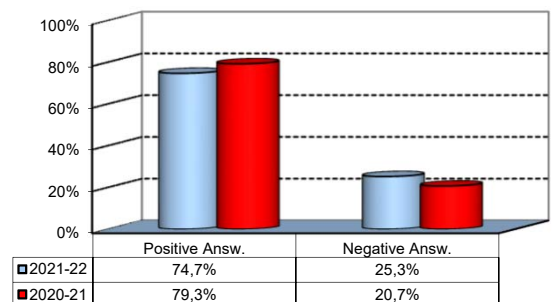
2) Do you think that the facilities provided by the University (library, computer labs) adequately supported preparation for your thesis?

Answers	a.v.	%
A - Definitely YES	31	34,4%
B - More YES than NO	37	41,1%
C - More NO than YES	17	18,9%
D - Definitely NO	5	5,6%
Total	90	100%
NA	4	



3) Do you think that your thesis was a useful experience for completing your education and a way to verify your planning and writing skills?

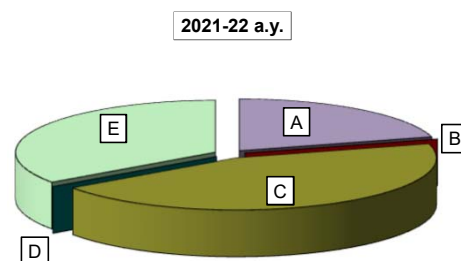
Answers	a.v.	%
A - Definitely YES	42	46,2%
B - More YES than NO	26	28,6%
C - More NO than YES	19	20,9%
D - Definitely NO	4	4,4%
Total	91	100%
NA	3	



Experience Of Studying Abroad

1) Please select the program you participated in:

Answers	a.v.	%	
		2021-22	2020-21
A - Exchange	19	20,7	8,4
B - CEMS-MIM	0	0,0	0,0
C- Double Degree	41	44,6	33,7
D - Free-Mover	0	0,0	0,0
E- None	32	34,8	57,8
Total	92	100,0	100,0
NA	2		

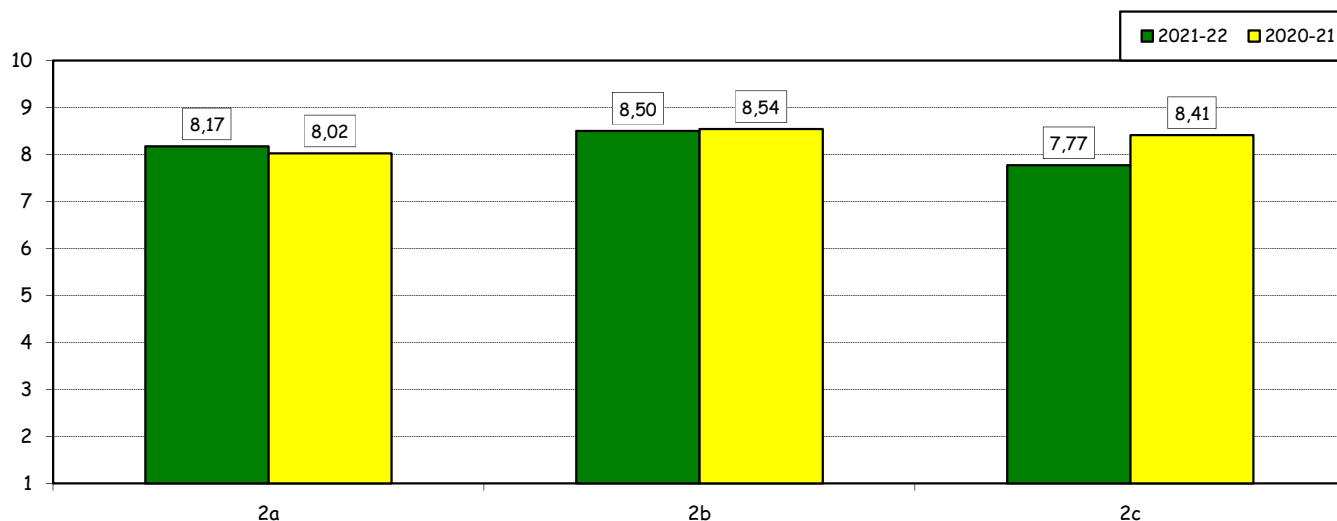


How would you evaluate:

(only A, B, C or E answers to item no.1)

Item	Answers	Negative				Positive				Total		N.A.
		1-2		3-4-5		6-7-8		9-10		a.v.	%	a.v.
		a.v.	%	a.v.	%	a.v.	%	a.v.	%	a.v.	%	a.v.
2a) Quality and completeness of information provided through: 'International Week', emails, brochures, International Relations Service web page.		0	0,0	6	10,0	27	45,0	27	45,0	60	100,0	0
2b) The range and interest of programs offered.		0	0,0	3	5,0	22	36,7	35	58,3	60	100,0	0
2c) The support you received from Bocconi International Relations.		3	5,0	4	6,7	26	43,3	27	45,0	60	100,0	0

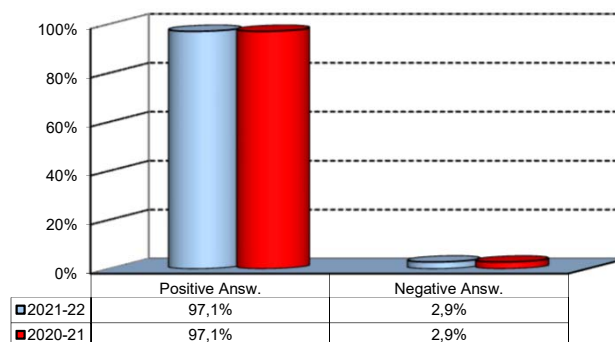
Over time comparison



Experience Of Studying Abroad

3) Would you positively evaluate this experience?

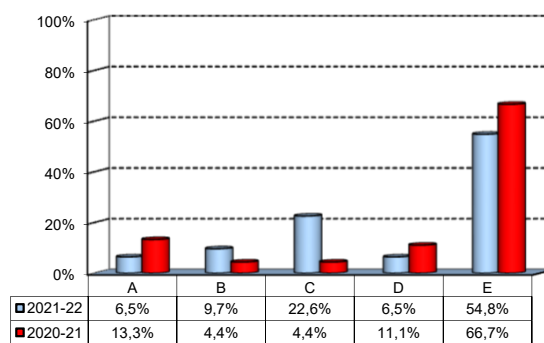
Answers	v. a.	%
A - Definitely YES	24	68,6%
B - More YES than NO	10	28,6%
C - More NO than YES	1	2,9%
D - Definitely NO	0	0,0%
Total	35	100%
NA	25	



(In case of answer "E" to item no.1)

4) Please indicate why you did not attend a period of study abroad (select all relevant reasons):

Answers	a. v.	%
A-Lack of interest in this kind of experience	2	6,5%
B-Absence of the requirements needed for participation in the program selected	3	9,7%
C-Rejection of your application	7	22,6%
D-Lack of time during the period of study	2	6,5%
E-Other (personal, family, organizational reasons, etc.)	17	54,8%
Total	31	100%
NA	1	



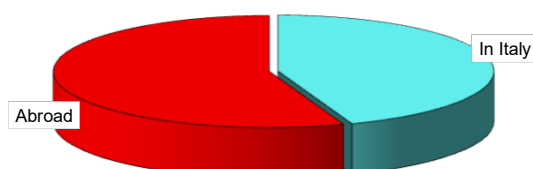
Internship Activities

1) Which activity recognized in your curriculum did you complete during the MSc program?

Answers	a.v.	%	
		2021-22	2020-21
A - Internship/Other job experience	90	97,8	62,5
B - Alternative Activity [^]	2	2,2	37,5
Total	92	100,0	100,0
NA	0		

2) Where did you complete the internship recognized by the Bachelor program?

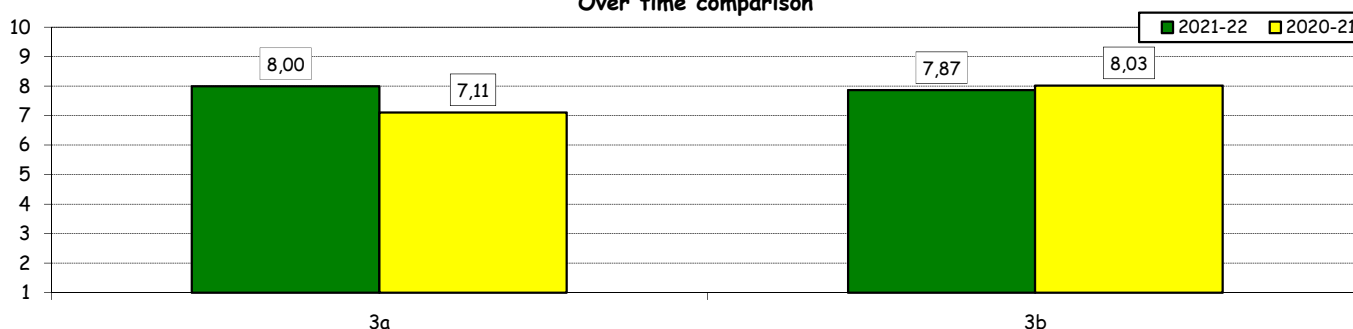
Answers	a.v.	%	
		2021-22	2020-21
In Italy	40	44,4%	76,0%
Abroad	50	55,6%	24,0%
Total	90	100%	100%
NA	0		



How would you evaluate:

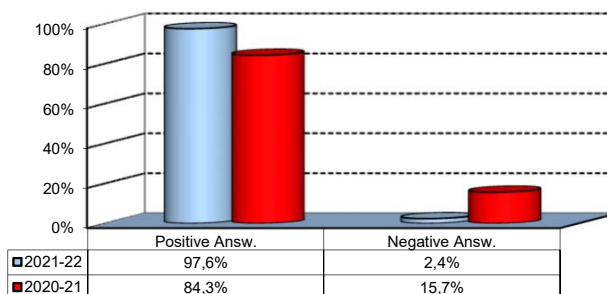
Item \ Answers	Negative				Positive				Total		N.A. a.v.
	1-2		3-4-5		6-7-8		9-10		a.v.	%	
	a.v.	%	a.v.	%	a.v.	%	a.v.	%			
3a) The number and variety of opportunities offered.	1	1,2	7	8,5	33	40,2	41	50,0	82	100,0	8
3b) The support you received from the Internship Office.	0	0,0	10	12,2	37	45,1	35	42,7	82	100,0	8

Over time comparison



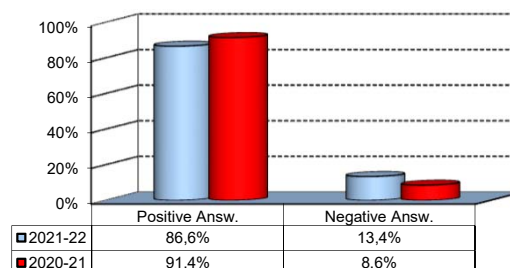
4) Would you positively evaluate this experience?

Answers	a.v.	%
A - Definitely YES	43	52,4%
B - More YES than NO	37	45,1%
C - More NO than YES	2	2,4%
D - Definitely NO	0	0,0%
Total	82	100%
NA	8	



5) Do you think that the qualifications you acquired while attending the MSc program were appropriate to perform this activity?

Answers	a.v.	%
A - Definitely YES	37	45,1%
B - More YES than NO	34	41,5%
C - More NO than YES	7	8,5%
D - Definitely NO	4	4,9%
Total	82	100%
NA	8	



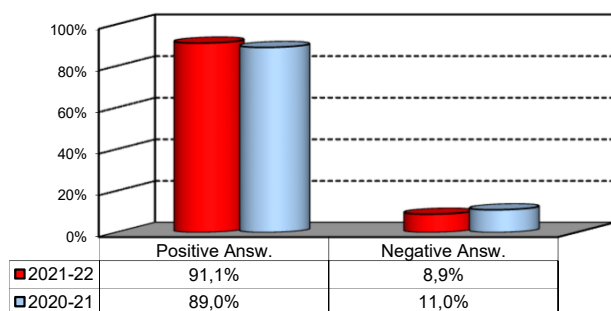
[^]: During the pandemic, students were given the opportunity to replace the mandatory internship with an alternative activity called Career Start Pack. It consists in an elective exam integrated with mandatory participation in the virtual career orientation path

General satisfaction and short-term plans

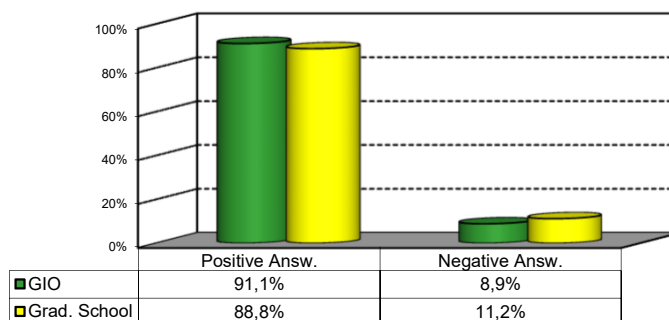
1) Are you satisfied overall with the study program you attended?

Answers	Italian		Non Italian		Total	
	a.v.	%	a.v.	%	a.v.	%
A - Definitely YES	28	48,3%	15	46,9%	43	47,8%
B - More YES than NO	27	46,6%	12	37,5%	39	43,3%
C - More NO than YES	2	3,4%	4	12,5%	6	6,7%
D - Definitely NO	1	1,7%	1	3,1%	2	2,2%
Total	58	100%	32	100%	90	100%
NA	2		2		4	

Over time comparison



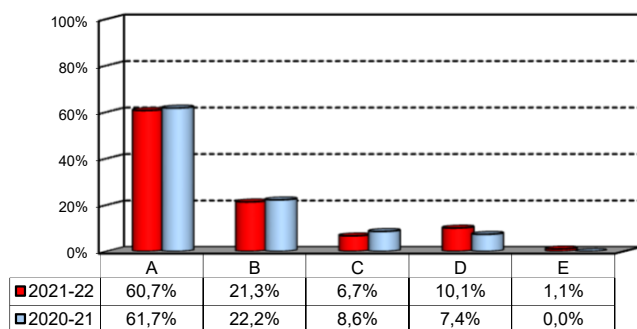
Comparison with the overall School data



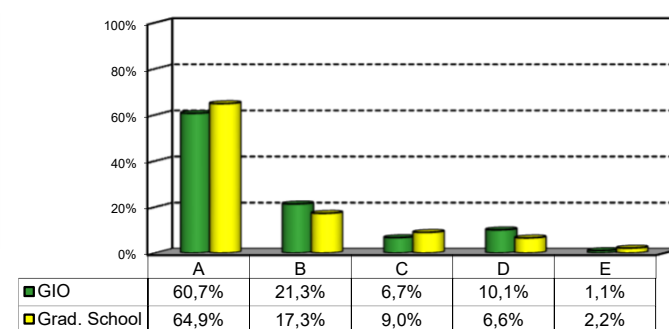
2a) If you could go back in time, would you enroll in the University again?

Answers	Italian		Non Italian		Total	
	v. a.	%	v. a.	%	v. a.	%
A-YES, in the same program at this University	38	66,7%	16	50,0%	54	60,7%
B-YES, in another program at this University	9	15,8%	10	31,3%	19	21,3%
C-YES, in the same program but at another University	4	7,0%	2	6,3%	6	6,7%
D-YES, in another program at another University	6	10,5%	3	9,4%	9	10,1%
E-NO, I would not enrol in university anymore	0	0,0%	1	3,1%	1	1,1%
Total	57	100%	32	100%	89	100%
NA	3		2		5	

Over time comparison



Comparison with the overall School data



General satisfaction and short-term plans

(In case of answer "B" to item no.2a)

2b) Which program would you enroll at this University?

MSc	a.v.	%
ACME	0	0,0%
AFC	0	0,0%
FIN	2	12,5%
CLELI	0	0,0%
ESS	8	50,0%
EMIT	3	18,8%
GIO	2	12,5%
IM	0	0,0%
M	1	6,3%
MM	0	0,0%
CYBER	1	6,3%
Total	16	100%
NA	3	

2c) Why would you make a different choice?

(In case of answer "B", "C", "D" or "E" to item no.2a)

Answers	a.v.	% 2021-22	% 2020-21
A - My interest has changed over time / I discovered that I have different attitudes	16	59,3%	40,0%
B -The MS program did not satisfy my expectations	8	29,6%	50,0%
C I would have preferred to attend the same MS program but taught in English	0	0,0%	0,0%
D - Other reasons	3	11,1%	10,0%
Total	27	100%	100%
NA	8		

D- Other reasons:

I was in dual degree so some classes were not M2 level, elective classes were excellent, especially Vecchi and Zara's ones

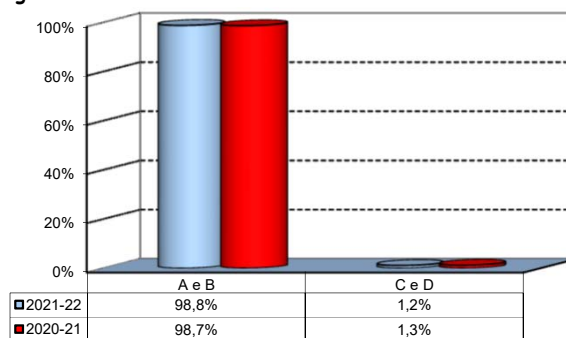
It's too much of learning by heart, this is not aligned with changing times and the trend other universities follow. Furthermore, there should be more courses to choose from (it's a masters degree not bachelors!).

The program overlapped too much with my bachelor degree

Infrastructure: Classrooms, Library And Facilities

1) What is your opinion about the classrooms where lessons and other teaching activities have been held?*

Answers	a.v.	%
A - Always or nearly always adequate	68	75,6%
B - Often adequate	17	18,9%
C - Rarely adequate	1	1,1%
D - Never adequate	0	0,0%
E - I did not use them	4	4,4%
Total	90	100%
NA	4	

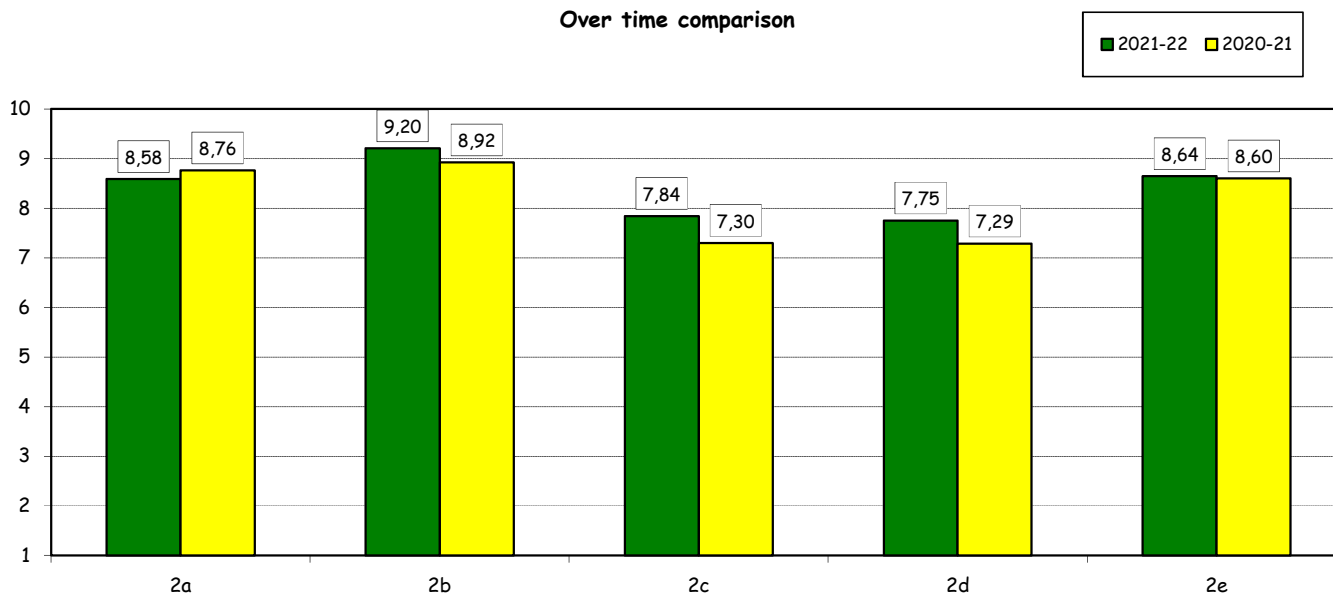


2) How would you evaluate:

(In case of answer "A", "B", "C" or "D" to item no.1)

Item	Answers	Negative				Positive				Total		NA	N.R.
		1-2		3-4-5		6-7-8		9-10		a.v.	%		
		a.v.	%	a.v.	%	a.v.	%	a.v.	%				
a) The adequacy of the audio and multimedia systems (e.g. instructor's computer, projectors, video players) installed in the classrooms.		0	0,0	3	3,4	32	36,0	54	60,7	89	100,0		5
b) The cleanliness of classrooms and of other common areas on campus (corridors, halls, study rooms).		0	0,0	0	0,0	19	21,6	69	78,4	88	100,0		6
c) The adequacy of the amount of areas/seats reserved to individual study in the University Library.		1	1,1	11	12,5	36	40,9	40	45,5	88	100,0	6	6
d) The adequacy of the amount of areas/seats reserved to individual study in other buildings on campus.		2	2,3	11	12,5	39	44,3	36	40,9	88	100,0	0	6
e) The clarity and adequacy of the signage system on campus.		0	0,0	1	1,1	33	37,9	53	60,9	87	100,0		7

Over time comparison

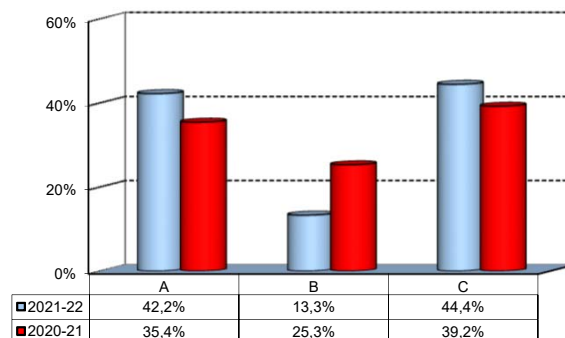


(*): the percentage shown on the graphs is calculated by excluding the responses of those who declare that they have not used the service.

Infrastructure: Classrooms, Library And Facilities

3) What is your overall opinion on the PC Labs and IT facilities provided by the University?

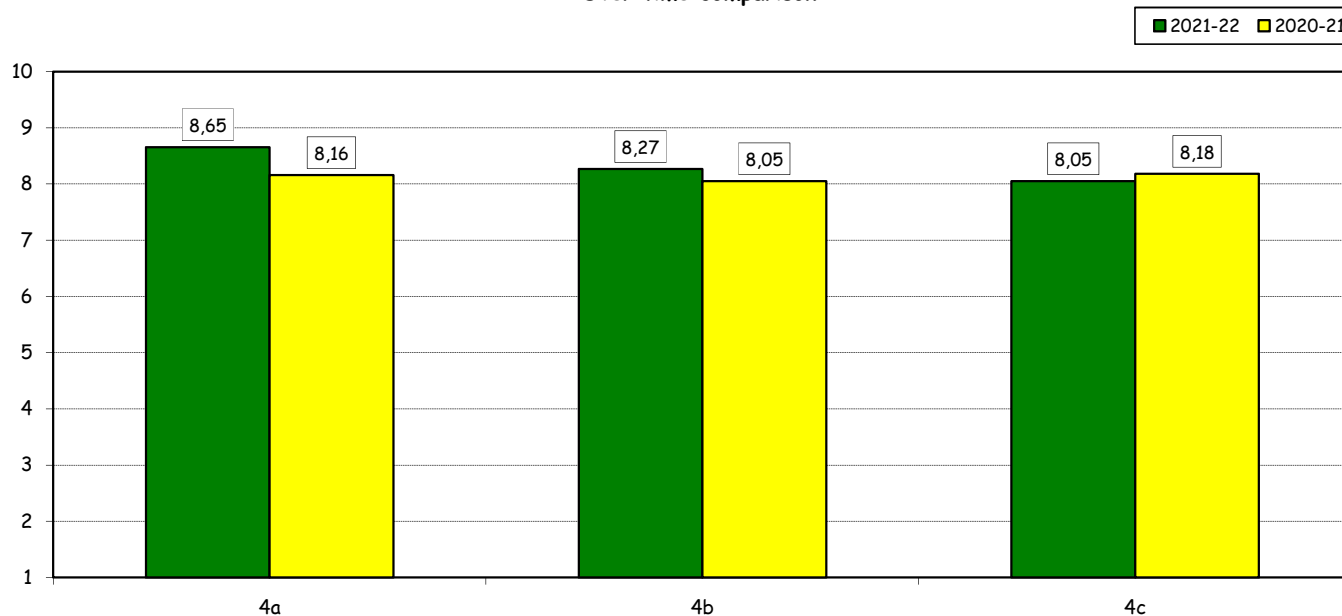
Answers	a.v.	%
A- Adequate in number	38	42,2%
B- Inadequate in number	12	13,3%
C- Never used	40	44,4%
Total	90	100%
NA	4	



4) How do you evaluate:

Item	Answers	Negative				Positive				Total		N.R.
		1-2		3-4-5		6-7-8		9-10		a.v.	%	
		a.v.	%	a.v.	%	a.v.	%	a.v.	%			
a) The availability of technical staff supporting students (Tutors) in PC Labs.*		0	0,0	2	4,1	20	40,8	27	55,1	49	100,0	1
b) The convenience of the PC Labs' opening hours.*		0	0,0	4	8,2	20	40,8	25	51,0	49	100,0	1
c) The level of accessibility and usability of the University's IT services (Internet access points, Punto Blu, Virtual Punto Blu, wireless connection).		0	0,0	6	6,8	46	52,3	36	40,9	88	100,0	2

Over time comparison

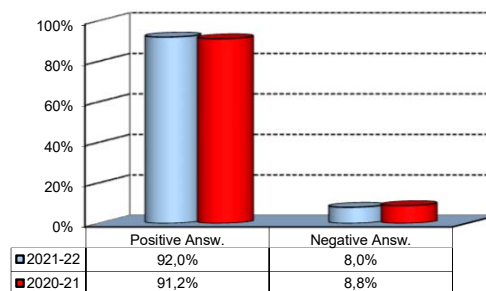


(*): Only in case of answer "A" or "B" to item no.3

Infrastructure: Classrooms, Library And Facilities

5) What is your overall opinion on the Library's services, such as support for individual study?*

Answers	a.v.	%
A - Very Positive	34	38,2%
B - Quite positive	35	39,3%
C - Quite negative	5	5,6%
D - Very Negative	1	1,1%
E - Never used	14	15,7%
Total	89	100%
NA	5	

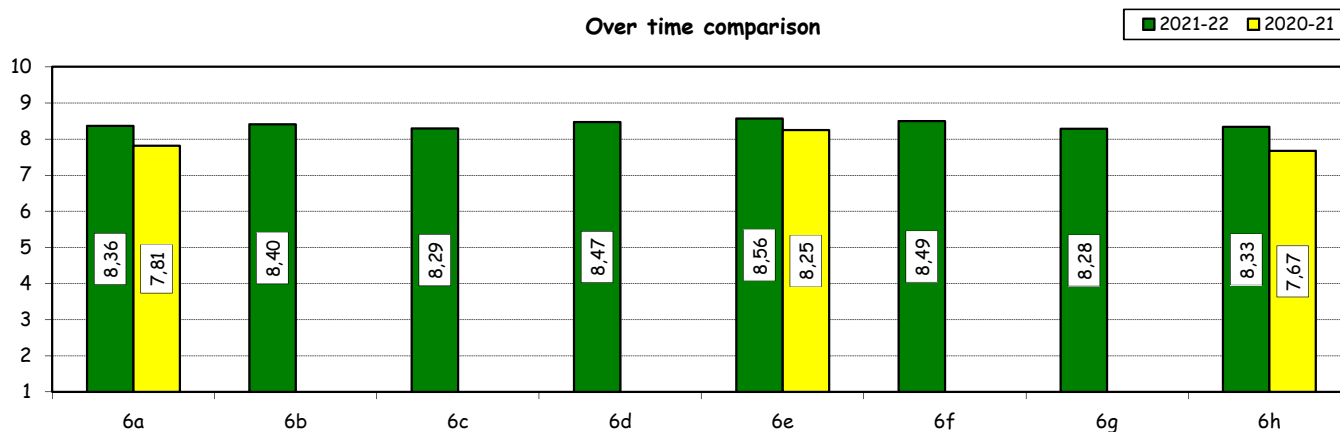


6) How would you evaluate:

(In case of answer "A", "B", "C" or "D" to item no. 5)

Item	Answers	Negative				Positive				Total		N.A.
		1-2		3-4-5		6-7-8		9-10		a.v.	%	a.v.
		a.v.	%	a.v.	%	a.v.	%	a.v.	%			
a) The convenience of the Library's opening hours and access to its main services.		0	0,0	3	4,5	29	43,9	34	51,5	66	100,0	9
b) Range of subjects covered in hardcopy collections (books and journals) compared to your needs of study and research		0	0,0	6	9,0	23	34,3	38	56,7	67	100,0	8
c) The relevance and updating of online collections (e-books, e-journals, databases) compared to your needs of study and research		1	1,7	3	5,2	22	37,9	32	55,2	58	100,0	17
d) The ease of use of search tools available on the Library website		0	0,0	3	4,8	23	37,1	36	58,1	62	100,0	13
e) The assistance provided by the Library staff		0	0,0	3	4,8	22	35,5	37	59,7	62	100,0	13
f) Availability of documents (textbooks, articles, chapters, case studies, etc.) used in individual courses		1	1,5	3	4,6	25	38,5	36	55,4	65	100,0	10
g) The Library website as a source of information on the services offered and as a point of access for resources		0	0,0	5	8,2	25	41,0	31	50,8	61	100,0	14
h) The usefulness of workshops offered by the Library to understand how to use the resources available (catalogues, e-journals, databases, etc.)		0	0,0	5	9,3	18	33,3	31	57,4	54	100,0	21

Over time comparison



(*): the percentage shown on the graphs is calculated by excluding the responses of those who declare that they have not used the service.