

EVALUATION OF THE DEGREE PROGRAM AND THE UNIVERSITY EXPERIENCE

MASTER OF SCIENCE IN
AMMINISTRAZIONE, FINANZA
AZIENDALE E CONTROLLO
a.y. 2021-2022

SURVEY PERIOD: JULY 2022 - JULY 2023

N° QUESTIONNAIRES PROCESSED: 251

N° OF GRADUATE STUDENTS: 261

RESPONSE RATE: 96,2%



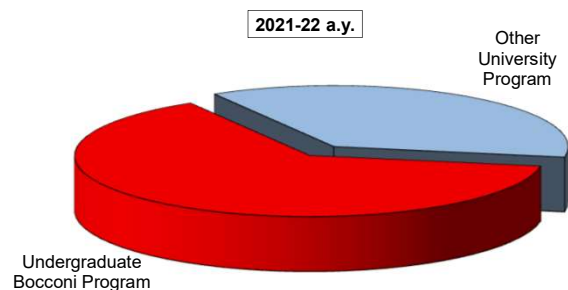
EVALUATION OF UNIVERSITY EXPERIENCE

Amministrazione, finanza aziendale e controllo

General information

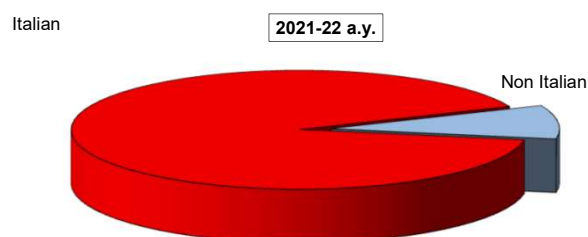
Undergraduate Career

Answers	a.v.	%	%
		2021-22	2020-21
Undergraduate Bocconi Program	160	63,7	64,3
Other University Program	91	36,3	35,7
Total	251	100,0	100,0
NA	0		



Nationality

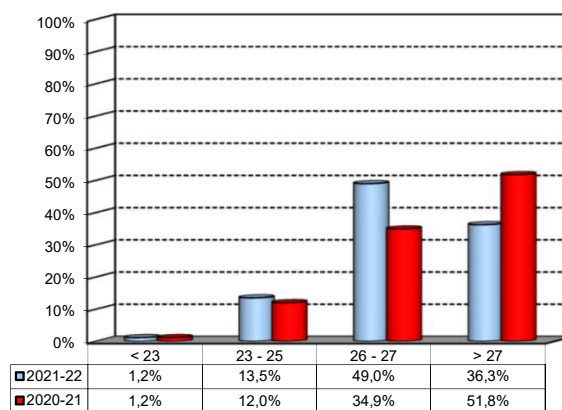
Answers	a.v.	%	%
		2021-22	2020-21
Italian	228	90,8%	85,1%
Non Italian	23	9,2%	14,9%
Total	251	100%	100%
NA	3		



Average mark of the exams passed:

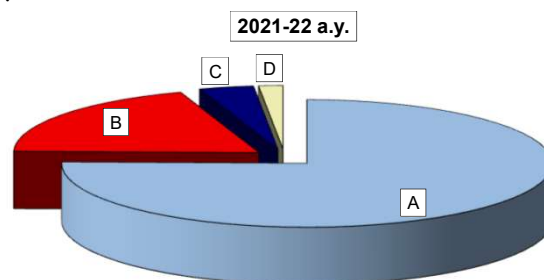
(approximate average expressed in 30/30)

Answers	a.v.	%
meno di 23	3	1,2%
23-25	34	13,5%
26-27	123	49,0%
maggiore di 27	91	36,3%
Total	251	100%
NA	0	



How many of the courses included in your curriculum did you attend regularly?

Answers	a.v.	%	%
		2021-22	2020-21
A - More than 75%	189	75,3	77,8
B - Between 50 and 75%	49	19,5	17,7
C - Between 25 and 50%	9	3,6	2,0
D - Less than 25%	4	1,6	2,4
Total	251	100,0	100,0
NA	0		

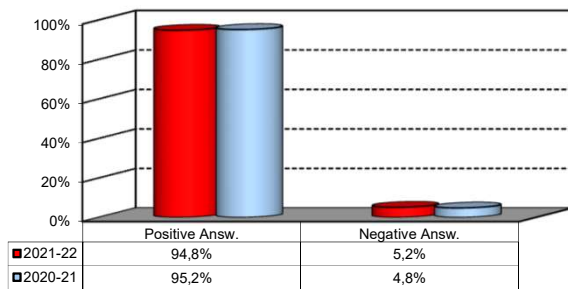


Study Experience

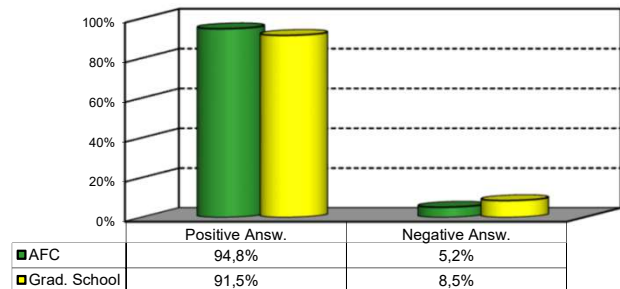
1) On the whole, do you think that the MSc program you attended at Bocconi enabled in-depth study of topics in both a theoretical and a practical sense?

Answers	Italian		Non Italian		Total	
	a.v.	%	a.v.	%	a.v.	%
A - Definitely YES	118	51,8%	11	47,8%	129	51,4%
B - More YES than NO	97	42,5%	12	52,2%	109	43,4%
C - More NO than YES	11	4,8%	0	0,0%	11	4,4%
D - Definitely NO	2	0,9%	0	0,0%	2	0,8%
Total	228	100%	23	100%	251	100%
NA	0		0			

Over time comparison



Comparison with the overall School data



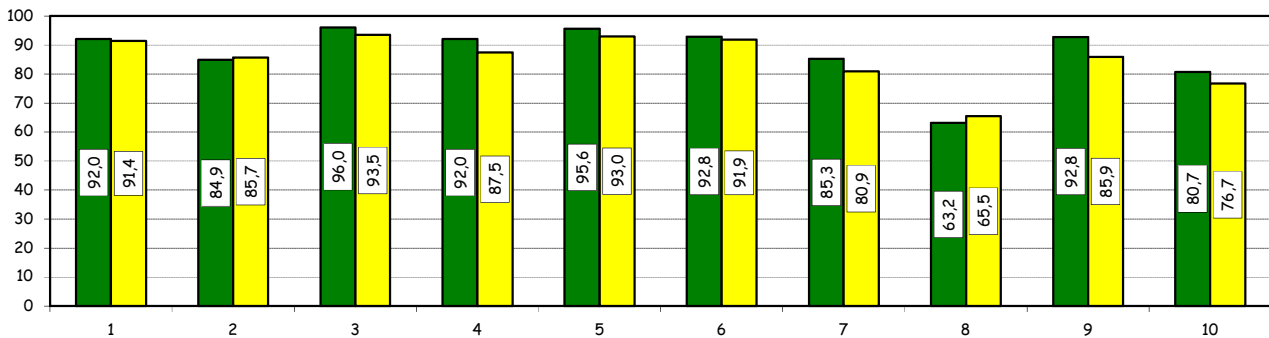
Study Experience

2) Do you think that your course of study at Bocconi has contributed to the development of the following skills?

Soft Skill	Item	Definitely YES		More YES than NO		More NO than YES		Definitely NO		Total		n.a.
		a.v.	%	a.v.	%	a.v.	%	a.v.	%	a.v.	%	a.v.
1	Ability to work in team	125	49,8	106	42,2	20	8,0	0	0,0	251	100,0	0
2	Interpersonal skills	103	41,0	110	43,8	33	13,1	5	2,0	251	100,0	0
3	Organizational skills	156	62,4	84	33,6	8	3,2	2	0,8	250	100,0	1
4	Critical thinking skills	133	53,0	98	39,0	15	6,0	5	2,0	251	100,0	0
5	Ability to analyze and select information	164	65,3	76	30,3	9	3,6	2	0,8	251	100,0	0
6	Problem-solving ability	148	59,0	85	33,9	16	6,4	2	0,8	251	100,0	0
7	Written communication skills	95	37,8	119	47,4	31	12,4	6	2,4	251	100,0	0
8	Verbal communication skills	52	20,8	106	42,4	73	29,2	19	7,6	250	100,0	1
9	Ability to cope with stress	159	63,6	73	29,2	15	6,0	3	1,2	250	100,0	1
10	Entrepreneurial spirit	90	36,1	111	44,6	43	17,3	5	2,0	249	100,0	2

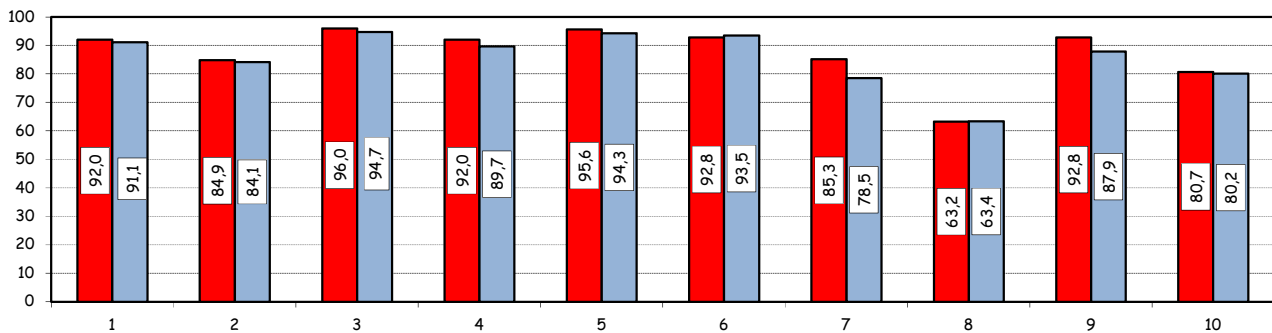
Positive answers (%):
comparison with the overall School data

■ AFC ■ Grad. School



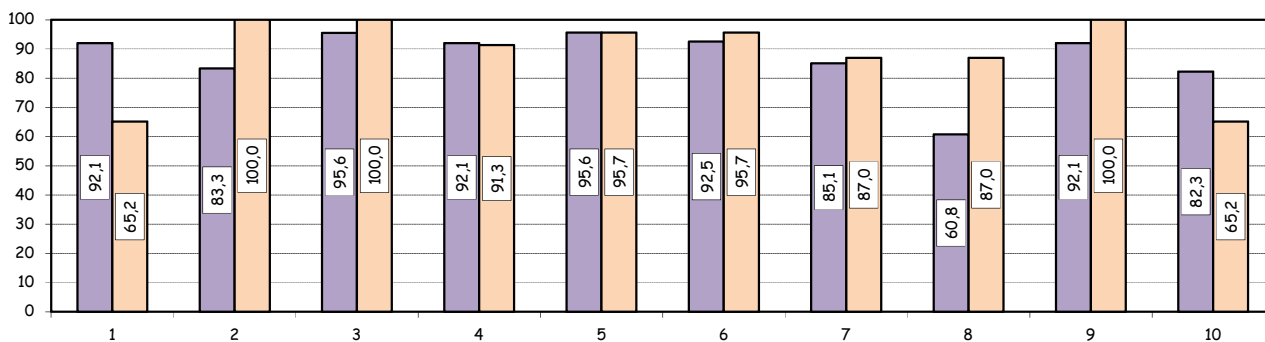
Positive answers (%):
Over time comparison

■ 2021-22 ■ 2020-21



Positive answers (%):
comparison based on nationality of student

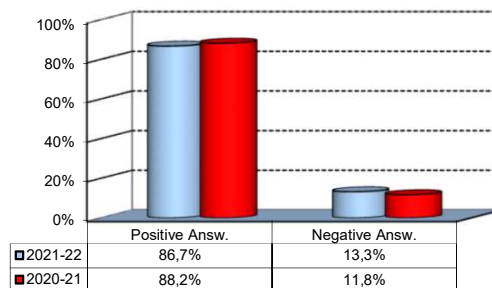
■ Italian ■ Non Italian



Study Experience

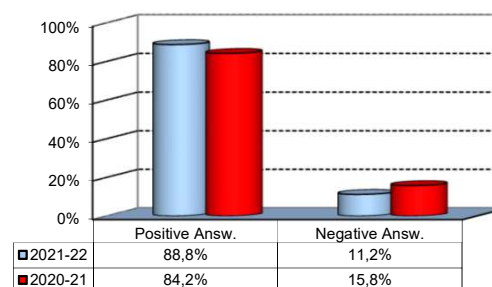
3) Do you think that teaching activities in the MSc program were structured in an active manner (frequent use of teamwork, case studies, assignments, etc.)?

Answers	a.v.	%
A - Definitely YES	90	36,1%
B - More YES than NO	126	50,6%
C - More NO than YES	29	11,6%
D - Definitely NO	4	1,6%
Total	249	100%
NA	2	



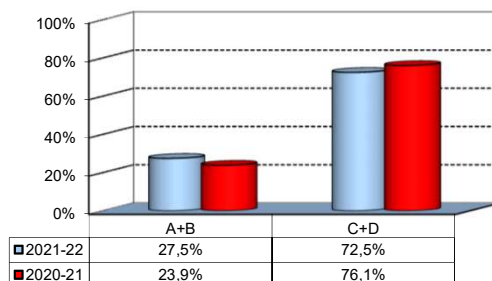
4) Do you think that the courses in your curriculum were adequately coordinated with each other?

Answers	a.v.	%
A - Definitely YES	87	34,9%
B - More YES than NO	134	53,8%
C - More NO than YES	23	9,2%
D - Definitely NO	5	2,0%
Total	249	100%
NA	2	



5) During the MSc program, did you notice any unnecessary overlaps or repetitions of subjects and content with what you studied during your undergraduate program?

Answers	a.v.	%
A-Very often	13	8,1%
B-Often	31	19,4%
C-Hardly ever	93	58,1%
D-Never	23	14,4%
Total	160	100%
NA	91	



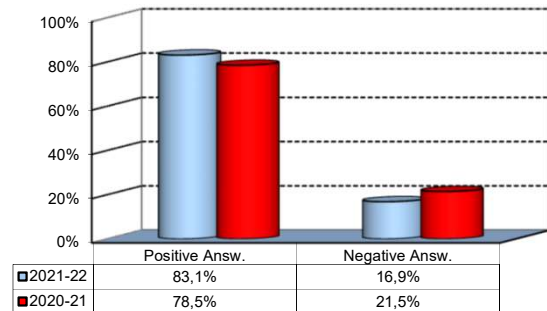
Please select the course or courses in the MSc program in which you encountered overlaps or unnecessary repetitions (multiple answers admitted)

Course	a.v.	%
MODELLI E SISTEMI DI PIANIFICAZIONE E CONTROLLO - PROGRAMMAZIONE E CONTROLLO	17	17,7%
DIRITTO DELL'IMPRESA (TEMI SOCIETARI E TRIBUTARI DI AMMINISTRAZIONE E CONTROLLO) - DIRITTO COMMERCIALE	11	11,5%
ANALISI DEI DATI - STATISTICA	8	8,3%
SCENARI MACROECONOMICI - ECONOMIA MONETARIA	7	7,3%
Other	53	55,2%
TOTAL	96	100,0%

Study Experience

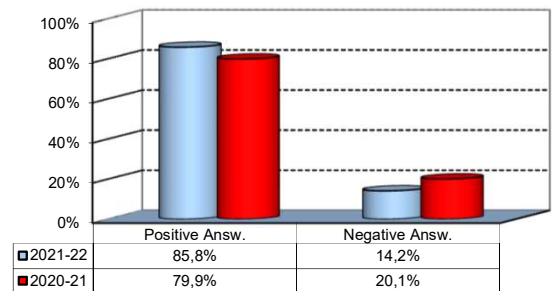
6) Do you think that the overall study load was compatible with the length of the program?

Answers	a. v.	%
A - Definitely YES	73	29,3%
B - More YES than NO	134	53,8%
C - More NO than YES	40	16,1%
D - Definitely NO	2	0,8%
Total	249	100%
NA	2	



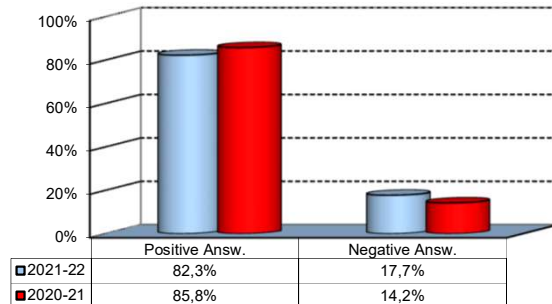
7) Was the coordination of the study program appropriately managed by the Program Director?

Answers	a. v.	%
A - Definitely YES	63	25,5%
B - More YES than NO	149	60,3%
C - More NO than YES	28	11,3%
D - Definitely NO	7	2,8%
Total	247	100%
NA	4	



8) On the whole, were the classroom climate and relationships with your classmates positive and able to enrich your personal experience?

Answers	a. v.	%
A - Definitely YES	83	33,5%
B - More YES than NO	121	48,8%
C - More NO than YES	35	14,1%
D - Definitely NO	9	3,6%
Total	248	100%
NA	3	

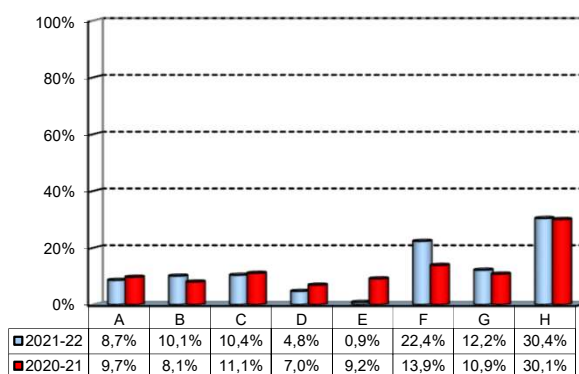


Extracurricular Activities

1) Which of the following extracurricular activities did you attend during your study program?

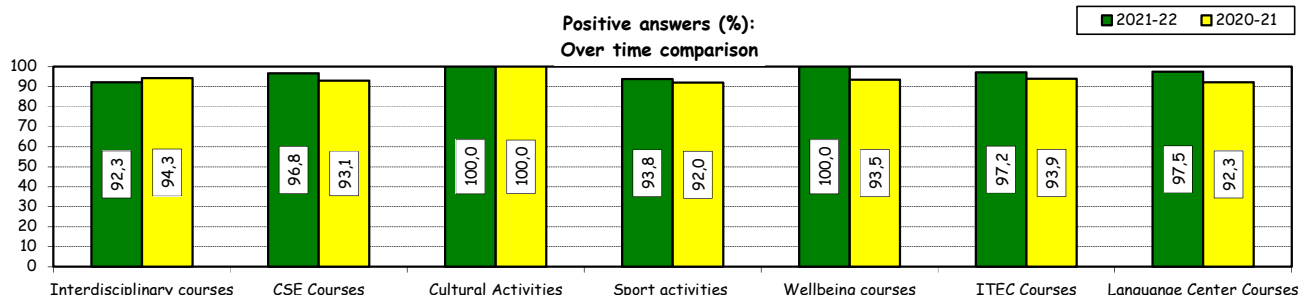
(multiple answers admitted)

Answers	a.v.	%
A - Interdisciplinary courses ("Sapere a tutto campo")	29	8,7%
B - Counseling and Self-Empowerment courses CSE	34	10,1%
C - Cultural Activities (visit museums, concerts, theatre and cinema, various issues)	35	10,4%
D - Sport activities	16	4,8%
E - Wellbeing courses	3	0,9%
F - Courses offered by ITEC	75	22,4%
G - Courses offered by Language Center	41	12,2%
H - None	102	30,4%
Total	335	100%
NA	0	



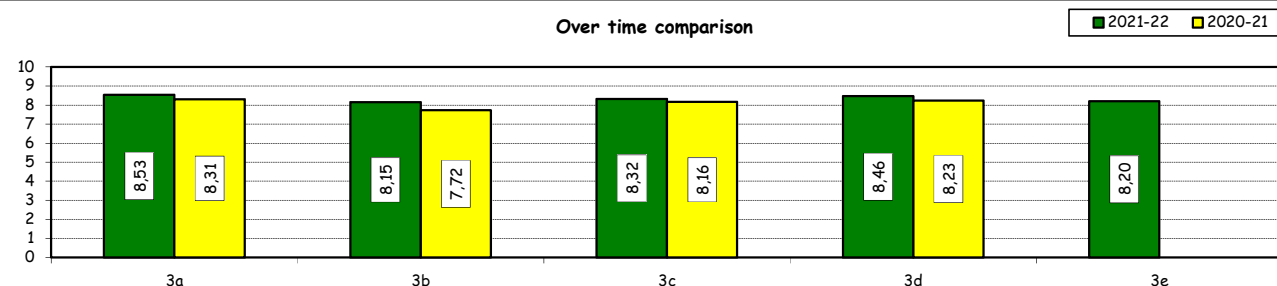
2) Do you think that the activities you took part in contributed to your cultural/educational enrichment?

	Definitely YES		More YES than NO		More NO than YES		Definitely NO		Total		NA
	a.v.	%	a.v.	%	a.v.	%	a.v.	%	a.v.	%	a.v.
A - Interdisciplinary courses	9	34,6	15	57,7	2	7,7	0	0,0	26	100,0	3
B - CSE courses	16	51,6	14	45,2	0	0,0	1	3,2	31	100,0	3
C - Cultural Activities	17	50,0	17	50,0	0	0,0	0	0,0	34	100,0	1
D - Sport activities	8	50,0	7	43,8	1	6,3	0	0,0	16	100,0	0
E - Wellbeing courses	1	33,3	2	66,7	0	0,0	0	0,0	3	100,0	0
F - ITEC courses	44	62,0	25	35,2	2	2,8	0	0,0	71	100,0	4
G -Language Center courses	20	50,0	19	47,5	1	2,5	0	0,0	40	100,0	1



How would you evaluate:

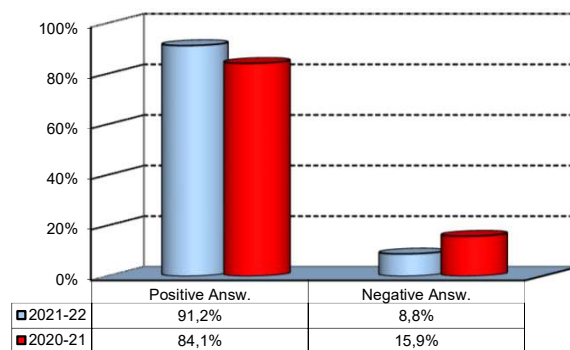
Item	Answers		Negative			Positive			Total		NA
	a.v.	%	1-2	3-4-5	6-7-8	9-10	a.v.	%	a.v.	%	a.v.
3a) The range and interest of programmes offered	0	0,0	3	2,1	65	44,5	78	53,4	146	100,0	3
3b) The support you received from the Campus Life Office	0	0,0	7	4,8	80	55,2	58	40,0	145	100,0	4
3c) The support you received from ITEC	0	0,0	2	2,7	36	49,3	35	47,9	73	100,0	2
3d) The support you received from Language Center	0	0,0	1	2,4	19	46,3	21	51,2	41	100,0	0
3e) The support you received from Bocconi Sport Team	0	0,0	0	0,0	11	73,3	4	26,7	15	100,0	1



Degree Thesis

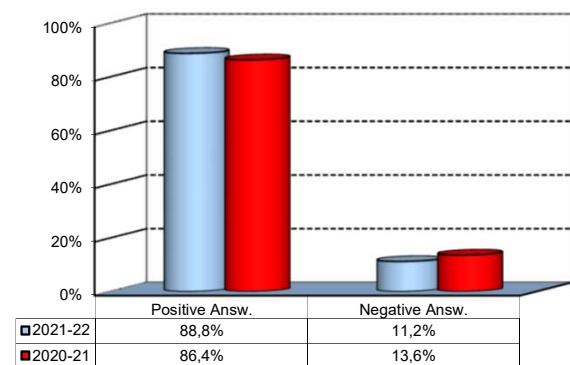
1) Do you think that the supervision and the assistance for preparing for your thesis were appropriate?

Answers	a. v.	%
A - Definitely YES	128	51,4%
B - More YES than NO	99	39,8%
C - More NO than YES	14	5,6%
D - Definitely NO	8	3,2%
Total	249	100%
NA	2	



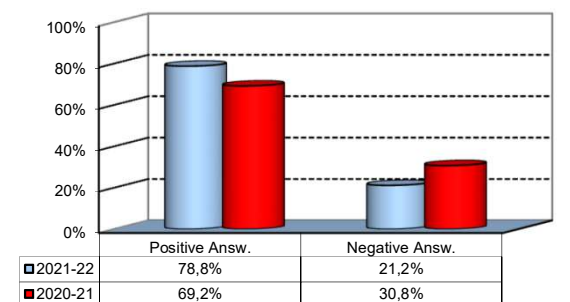
2) Do you think that the facilities provided by the University (library, computer labs) adequately supported preparation for your thesis?

Answers	a. v.	%
A - Definitely YES	115	46,2%
B - More YES than NO	106	42,6%
C - More NO than YES	24	9,6%
D - Definitely NO	4	1,6%
Total	249	100%
NA	2	



3) Do you think that your thesis was a useful experience for completing your education and a way to verify your planning and writing skills?

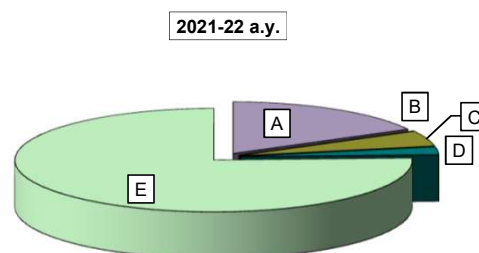
Answers	a. v.	%
A - Definitely YES	101	40,4%
B - More YES than NO	96	38,4%
C - More NO than YES	26	10,4%
D - Definitely NO	27	10,8%
Total	250	100%
NA	1	



Experience Of Studying Abroad

1) Please select the program you participated in:

Answers	a.v.	%	
		2021-22	2020-21
A - Exchange	43	17,2	11,3
B - CEMS-MIM	0	0,0	0,0
C- Double Degree	12	4,8	4,8
D - Free-Mover	6	2,4	0,0
E- None	189	75,6	83,9
Total	250	100,0	100,0
NA	1		

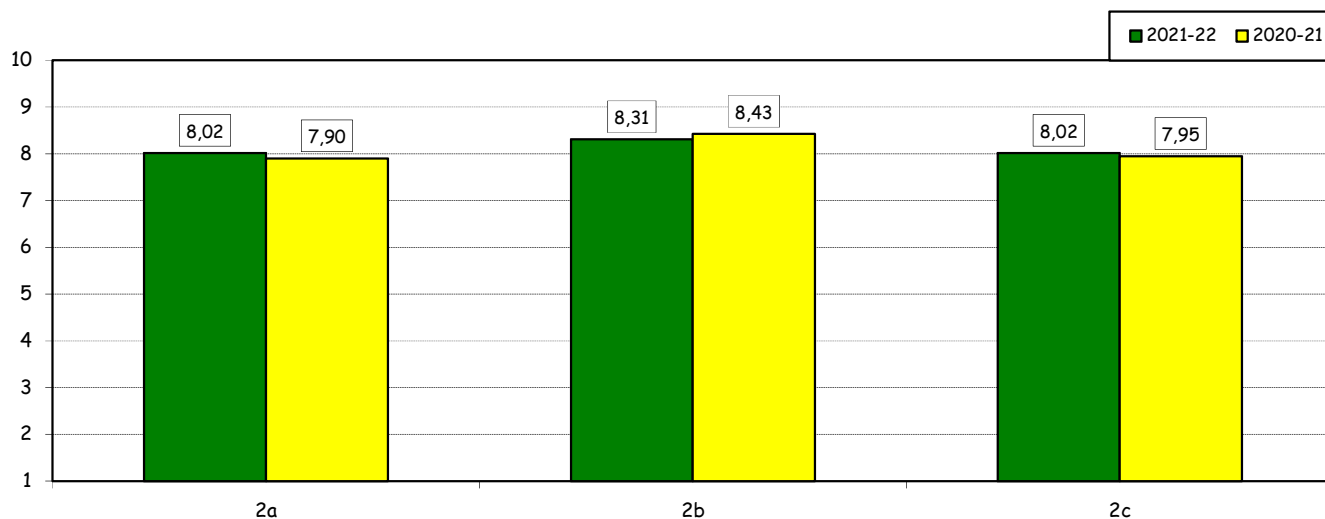


How would you evaluate:

(only A, B, C or E answers to item no.1)

Item	Answers	Negative				Positive				Total		N.A. a.v.
		1-2		3-4-5		6-7-8		9-10		a.v.	%	
		a.v.	%	a.v.	%	a.v.	%	a.v.	%			
2a) Quality and completeness of information provided through: 'International Week', emails, brochures, International Relations Service web page.		2	3,6	2	3,6	27	49,1	24	43,6	55	100,0	0
2b) The range and interest of programs offered.		2	3,6	1	1,8	22	40,0	30	54,5	55	100,0	0
2c) The support you received from Bocconi International Relations.		1	1,9	4	7,4	23	42,6	26	48,1	54	100,0	1

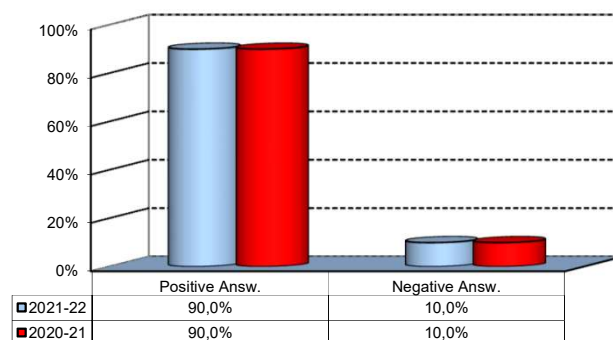
Over time comparison



Experience Of Studying Abroad

3) Would you positively evaluate this experience?

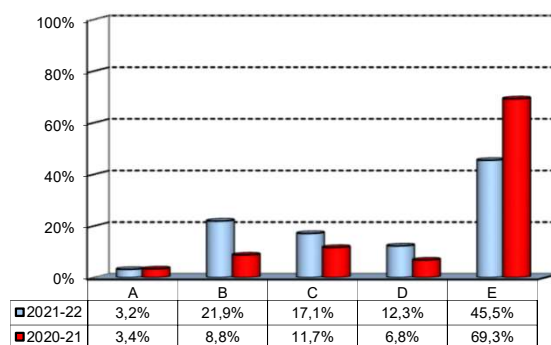
Answers	v. a.	%
A - Definitely YES	25	62,5%
B - More YES than NO	11	27,5%
C - More NO than YES	3	7,5%
D - Definitely NO	1	2,5%
Total	40	100%
NA	21	



(In case of answer "E" to item no.1)

4) Please indicate why you did not attend a period of study abroad (select all relevant reasons):

Answers	a. v.	%
A-Lack of interest in this kind of experience	6	3,2%
B-Absence of the requirements needed for participation in the program selected	41	21,9%
C-Rejection of your application	32	17,1%
D-Lack of time during the period of study	23	12,3%
E-Other (personal, family, organizational reasons, etc.)	85	45,5%
Total	187	100%
NA	2	



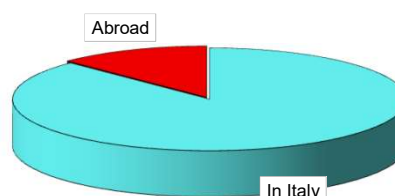
Internship Activities

1) Which activity recognized in your curriculum did you complete during the MSc program?

Answers	a.v.	%	
		2021-22	2020-21
A - Internship/Other job experience	240	98,4	73,5
B - Alternative Activity [^]	4	1,6	26,5
Total	244	100,0	100,0
NA	0		

2) Where did you complete the internship recognized by the Bachelor program?

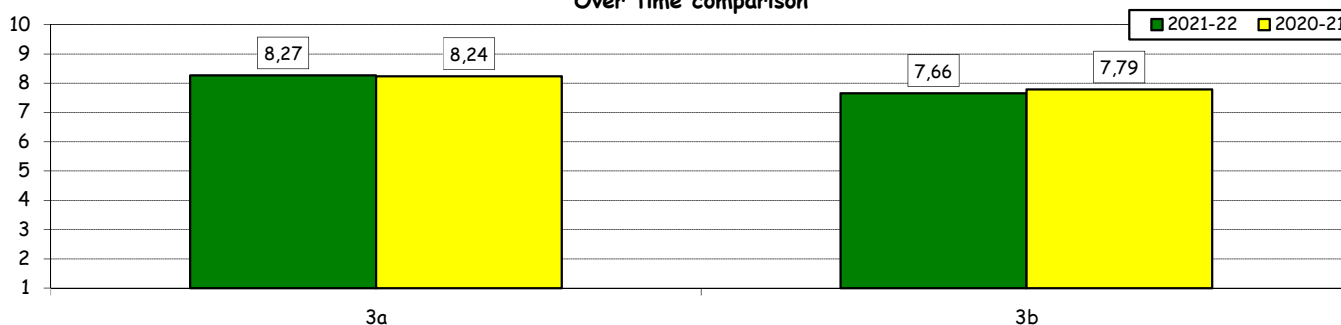
Answers	a.v.	%	
		2021-22	2020-21
In Italy	210	87,5%	96,7%
Abroad	30	12,5%	3,3%
Total	240	100%	100%
NA	0		



How would you evaluate:

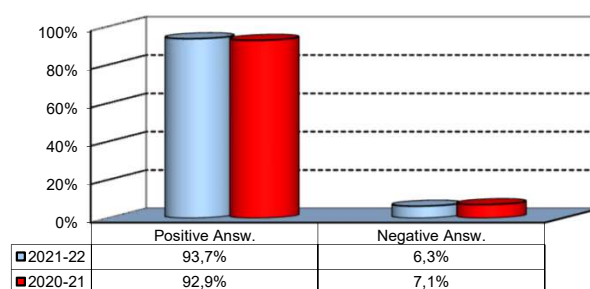
Item	Answers	Negative				Positive				Total	N.A.	
		1-2		3-4-5		6-7-8		9-10				
		a.v.	%	a.v.	%	a.v.	%	a.v.	%			
3a) The number and variety of opportunities offered.		2	0,9	12	5,5	98	45,0	106	48,6	218	100,0	22
3b) The support you received from the Internship Office.		4	1,8	27	12,3	110	50,0	79	35,9	220	100,0	20

Over time comparison



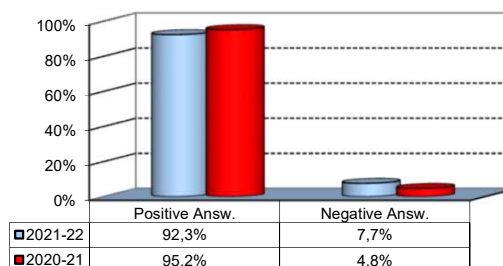
4) Would you positively evaluate this experience?

Answers	a.v.	%
A - Definitely YES	123	55,7%
B - More YES than NO	84	38,0%
C - More NO than YES	9	4,1%
D - Definitely NO	5	2,3%
Total	221	100%
NA	19	



5) Do you think that the qualifications you acquired while attending the MSc program were appropriate to perform this activity?

Answers	a.v.	%
A - Definitely YES	120	54,1%
B - More YES than NO	85	38,3%
C - More NO than YES	12	5,4%
D - Definitely NO	5	2,3%
Total	222	100%
NA	18	



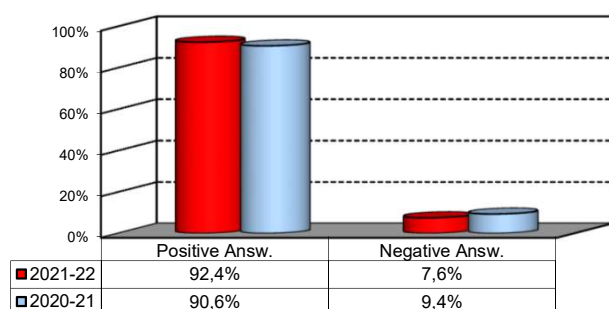
[^]: During the pandemic, students were given the opportunity to replace the mandatory internship with an alternative activity called Career Start Pack. It consists in an elective exam integrated with mandatory participation in the virtual career orientation path

General satisfaction and short-term plans

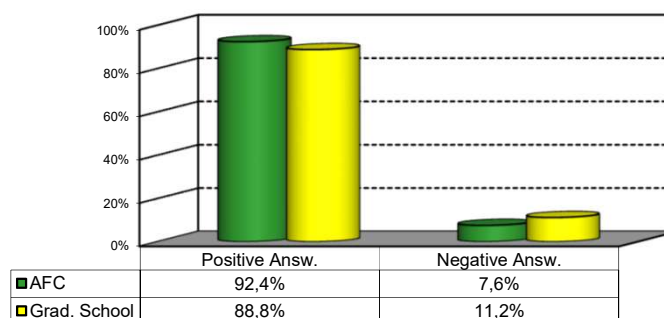
1) Are you satisfied overall with the study program you attended?

Answers	Italian		Non Italian		Total	
	a.v.	%	a.v.	%	a.v.	%
A - Definitely YES	93	41,0%	10	43,5%	103	41,2%
B - More YES than NO	115	50,7%	13	56,5%	128	51,2%
C - More NO than YES	15	6,6%	0	0,0%	15	6,0%
D - Definitely NO	4	1,8%	0	0,0%	4	1,6%
Total	227	100%	23	100%	250	100%
NA	1		0		1	

Over time comparison



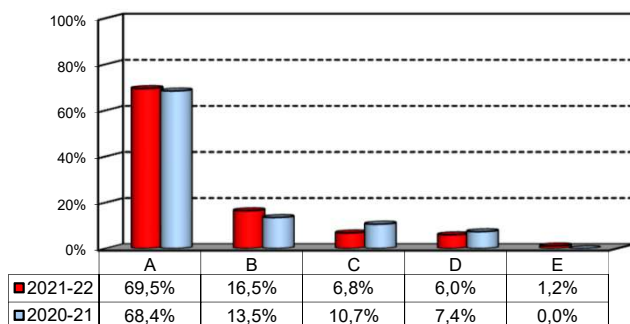
Comparison with the overall School data



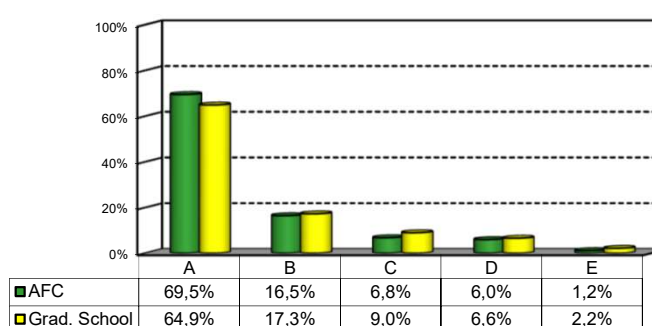
2a) If you could go back in time, would you enroll in the University again?

Answers	Italian		Non Italian		Total	
	v.a.	%	v.a.	%	v.a.	%
A-YES, in the same program at this University	157	69,5%	16	69,6%	173	69,5%
B-YES, in another program at this University	36	15,9%	5	21,7%	41	16,5%
C-YES, in the same program but at another University	15	6,6%	2	8,7%	17	6,8%
D-YES, in another program at another University	15	6,6%	0	0,0%	15	6,0%
E-NO, I would not enrol in university anymore	3	1,3%	0	0,0%	3	1,2%
Total	226	100%	23	100%	249	100%
NA	2		0		2	

Over time comparison



Comparison with the overall School data



General satisfaction and short-term plans

(In case of answer "B" to item no.2a)

2b) Which program would you enroll at this University?

MSc	a.v.	%
ACME	0	0,0%
AFC	8	21,1%
FIN	14	36,8%
CLELI	1	2,6%
ESS	3	7,9%
EMIT	1	2,6%
GIO	1	2,6%
IM	5	13,2%
M	5	13,2%
MM	0	0,0%
CYBER	1	2,6%
Total	38	100%
NA	3	

2c) Why would you make a different choice?

(In case of answer "B", "C", "D" or "E" to item no.2a)

Answers	a.v.	% 2021-22	% 2020-21
A - My interest has changed over time / I discovered that I have different attitudes	29	42,0%	33,9%
B -The MS program did not satisfy my expectations	22	31,9%	30,5%
C I would have preferred to attend the same MS program but taught in English	9	13,0%	11,9%
D - Other reasons	9	13,0%	23,7%
Total	69	100%	100%
NA	7		

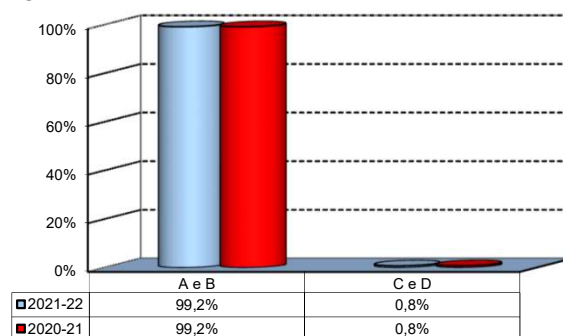
D- Other reasons:

Avrei preferito frequentare lo stesso corso di laurea ma in lingua inglese. Avrei preferito frequentare un master di un anno e con un approccio piu' pratico ed improntato al mondo del lavoro piu' che allo studio teorico.
Avrei scelto un Universita' estera che mi avrebbe permesso di avere maggiori possibilita' lavorative in particolar modo all'estero ma soprattutto un carico di studio teorico minore, in bocconi inutilmente eccessivo, a favore di uno piu' pragmatico e utile.
Faster entry into the job market abroad
I would have preferred to attend a MSc Program abroad
In generale avrei preferito fare la magistrale all'estero, ma sicuramente, rimanendo in Bocconi, avrei preferito frequentare il corso in inglese.
Master di 1 anno all'estero (UK, EU) che offrono opportunita' lavorative analoghe ma che sono piu' rapidi.
Nessun valore aggiunto significativo nell'aver frequentato la Bocconi rispetto alla mia triennale o ad altri colleghi che hanno frequentato altri atenei. Inoltre, e' scandalosa la mancanza di imparzialita' nella correzione degli esami da parte dei docenti
Non viene garantita una adeguata formazione agli studenti che provengono da altri corsi di studi triennali. Il precorso di bilancio e' stato una farsa e l'esame difficile in modo sproporzionato a quanto trattato in aula.
Sebbene le materie studiate e gli argomenti studiati siano di mio interesse, credo che questo corso cosi' formulato non sia adeguato a far emergere il potenziale degli studenti. Temo che al contrario spinga verso una competizione fra alunni poco sana.
too much workload
A parità di opportunità lavorative in uscita, il taglio del corso è eccessivamente teorico
Avrei preferito un corso di laurea meno nozionistico e più pratico, comparato all'offerta delle università estere. Molte delle materie non hanno alcuna utilità dal punto di vista lavorativo. Career Service pessimo comparato ad ESCP, ESSEC e competitor
Avrei preferito fare un corso più breve e con un taglio più pratico e più calzante al mondo del lavoro (+ pratica, + stage, - teoria e - studio della letteratura economica)

Infrastructure: Classrooms, Library And Facilities

1) What is your opinion about the classrooms where lessons and other teaching activities have been held?*

Answers	a.v.	%
A - Always or nearly always adequate	194	77,9%
B - Often adequate	50	20,1%
C - Rarely adequate	1	0,4%
D - Never adequate	1	0,4%
E - I did not use them	3	1,2%
Total	249	100%
NA	2	

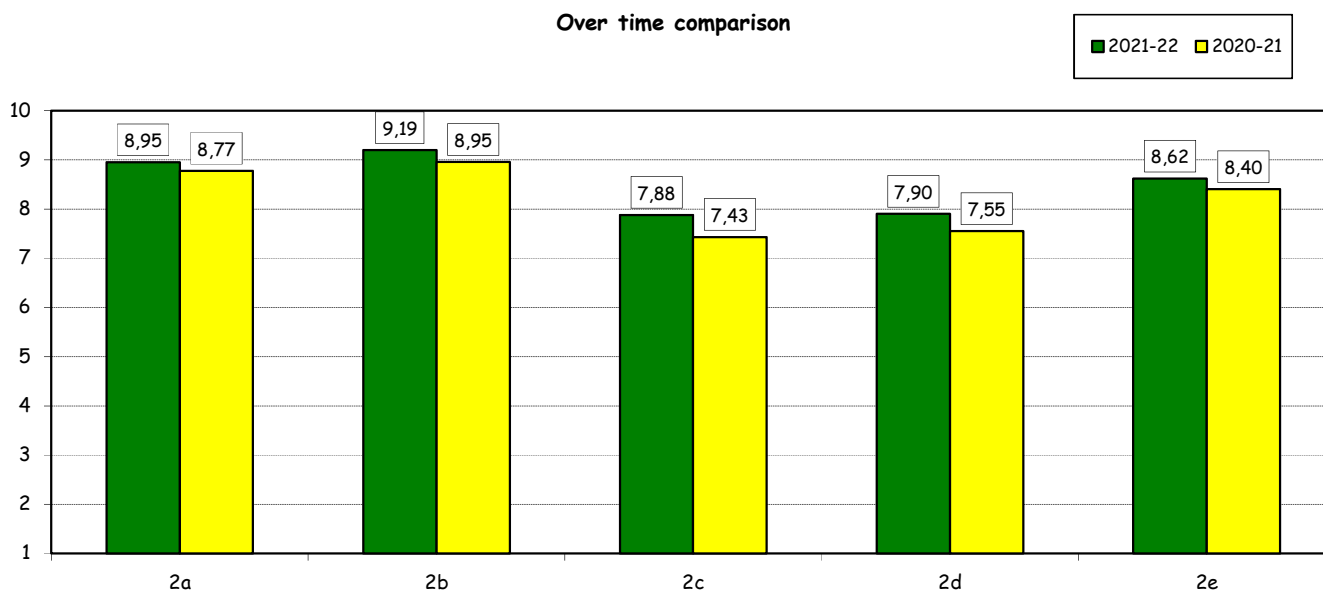


2) How would you evaluate:

(In case of answer "A", "B", "C" or "D" to item no.1)

Item	Answers	Negative				Positive				Total		NA	N.R.
		1-2		3-4-5		6-7-8		9-10		a.v.	%		
		a.v.	%	a.v.	%	a.v.	%	a.v.	%				
a) The adequacy of the audio and multimedia systems (e.g. instructor's computer, projectors, video players) installed in the classrooms.		0	0,0	1	0,4	71	28,5	177	71,1	249	100,0		2
b) The cleanliness of classrooms and of other common areas on campus (corridors, halls, study rooms).		0	0,0	2	0,8	48	19,3	199	79,9	249	100,0		2
c) The adequacy of the amount of areas/seats reserved to individual study in the University Library.		9	3,6	18	7,3	115	46,4	106	42,7	248	100,0	3	3
d) The adequacy of the amount of areas/seats reserved to individual study in other buildings on campus.		5	2,0	20	8,1	116	47,2	105	42,7	246	100,0	0	5
e) The clarity and adequacy of the signage system on campus.		2	0,8	5	2,0	94	38,1	146	59,1	247	100,0		4

Over time comparison

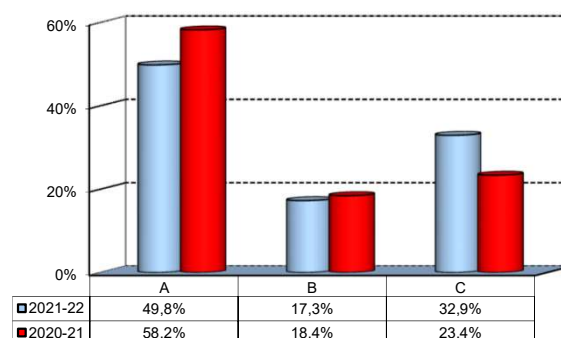


(*): the percentage shown on the graphs is calculated by excluding the responses of those who declare that they have not used the service.

Infrastructure: Classrooms, Library And Facilities

3) What is your overall opinion on the PC Labs and IT facilities provided by the University?

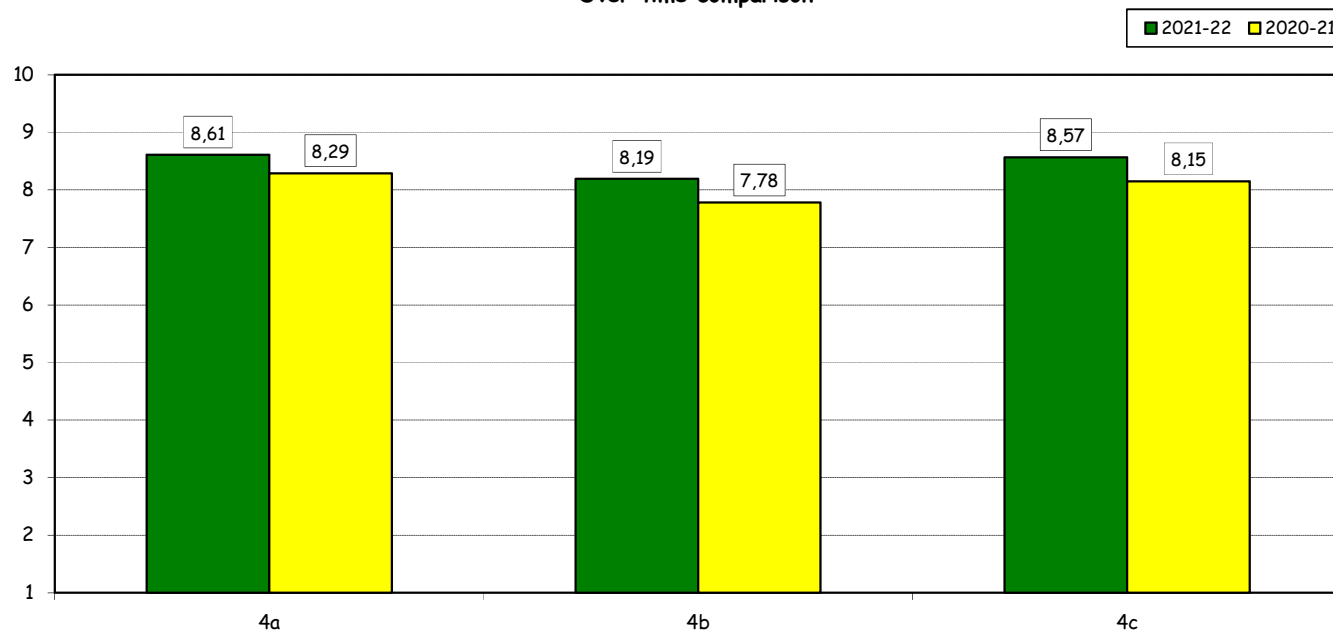
Answers	a.v.	%
A- Adequate in number	124	49,8%
B- Inadequate in number	43	17,3%
C- Never used	82	32,9%
Total	249	100%
NA	2	



4) How do you evaluate:

Item	Answers	Negative				Positive				Total	N.R.	
		1-2		3-4-5		6-7-8		9-10				
		a.v.	%	a.v.	%	a.v.	%	a.v.	%			
a) The availability of technical staff supporting students (Tutors) in PC Labs.*		0	0,0	5	3,0	67	40,6	93	56,4	165	100,0	2
b) The convenience of the PC Labs' opening hours.*		1	0,6	10	6,1	79	48,5	73	44,8	163	100,0	4
c) The level of accessibility and usability of the University's IT services (Internet access points, Punto Blu, Virtual Punto Blu, wireless connection).		1	0,4	4	1,6	104	42,8	134	55,1	243	100,0	6

Over time comparison

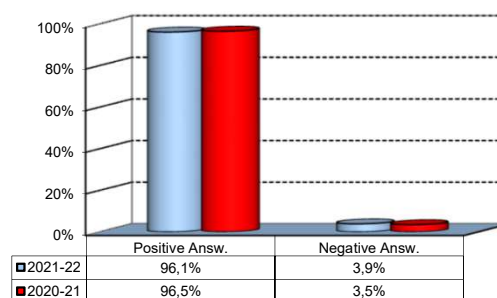


(*): Only in case of answer "A" or "B" to item no.3

Infrastructure: Classrooms, Library And Facilities

5) What is your overall opinion on the Library's services, such as support for individual study?*

Answers	a.v.	%
A - Very Positive	115	46,0%
B - Quite positive	106	42,4%
C - Quite negative	7	2,8%
D - Very Negative	2	0,8%
E - Never used	20	8,0%
Total	250	100%
NA	1	

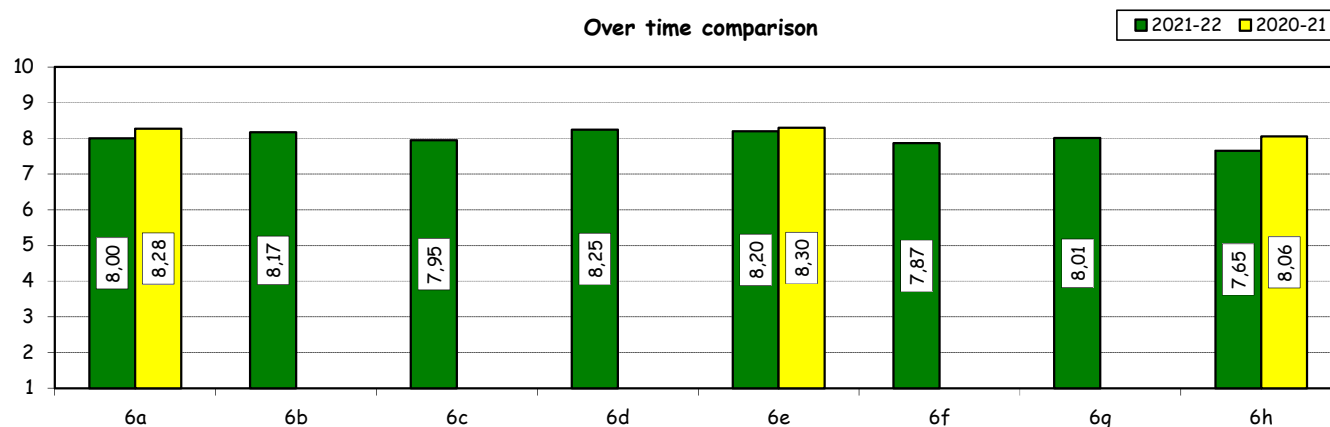


6) How would you evaluate:

(In case of answer "A", "B", "C" or "D" to item no. 5)

Item	Answers	Negative				Positive				Total		N.A. a.v.
		1-2		3-4-5		6-7-8		9-10		a.v.	%	
		a.v.	%	a.v.	%	a.v.	%	a.v.	%	a.v.	%	
a) The convenience of the Library's opening hours and access to its main services.		4	2,0	14	7,0	93	46,7	88	44,2	199	100,0	31
b) Range of subjects covered in hardcopy collections (books and journals) compared to your needs of study and research		2	1,0	11	5,5	101	50,5	86	43,0	200	100,0	30
c) The relevance and updating of online collections (e-books, e-journals, databases) compared to your needs of study and research		2	1,1	13	7,4	94	53,4	67	38,1	176	100,0	54
d) The ease of use of search tools available on the Library website		0	0,0	12	7,4	70	42,9	81	49,7	163	100,0	67
e) The assistance provided by the Library staff		0	0,0	10	5,2	97	50,8	84	44,0	191	100,0	39
f) Availability of documents (textbooks, articles, chapters, case studies, etc.) used in individual courses		2	1,0	11	5,6	111	56,9	71	36,4	195	100,0	35
g) The Library website as a source of information on the services offered and as a point of access for resources		0	0,0	15	7,9	96	50,8	78	41,3	189	100,0	41
h) The usefulness of workshops offered by the Library to understand how to use the resources available (catalogues, e-journals, databases, etc.)		2	1,3	17	10,9	90	57,7	47	30,1	156	100,0	74

Over time comparison



(*): the percentage shown on the graphs is calculated by excluding the responses of those who declare that they have not used the service.