

**EVALUATION OF
THE DEGREE PROGRAM AND THE
UNIVERSITY EXPERIENCE**

**BACHELOR IN
INTERNATIONAL POLITICS AND
GOVERNMENT**

N° QUESTIONNAIRES PROCESSED: 97

N° OF GRADUATE STUDENTS: 101

RESPONSE RATE: 96,0%



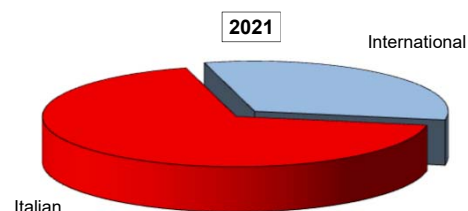
EVALUATION OF STUDENT EXPERIENCE

Bachelor of Science in International Politics and Government

General information

School Career

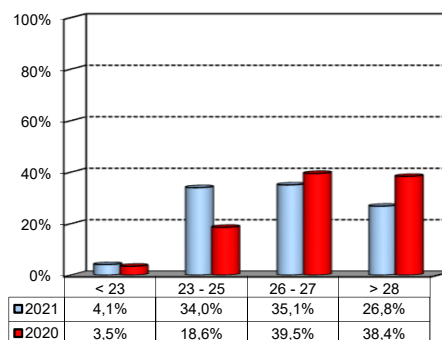
Answers	a.v.	%	%
		2021	2020
Italian	66	68,0%	75,6%
International	31	32,0%	24,4%
Total	97	100%	100%
NA	0		



Average mark of the exams passed:

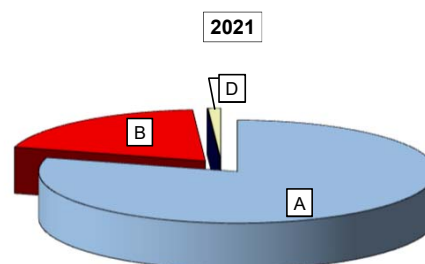
(approximate average expressed in 30/30)

Answers	a.v.	%
< 23	4	4,1%
23 - 25	33	34,0%
26 - 27	34	35,1%
> 28	26	26,8%
Total	97	100%
NA	0	



How many of the courses included in your curriculum did you attend regularly?

Answers	a.v.	%	%
		2021	2020
A - More than 75%	77	79,4%	84,7%
B - Between 50 and 75%	19	19,6%	3,5%
C - Between 25 and 50%	0	0,0%	1,2%
D - Less than 25%	1	1,0%	10,6%
Total	97	100%	100%
NA	0		

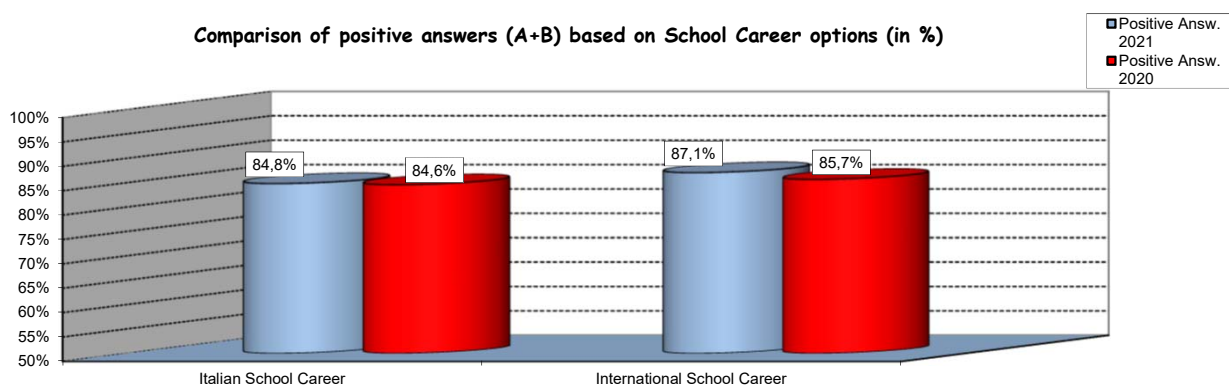


Study experience

1) Was the knowledge acquired during secondary school adequate to undertake your Bachelor program?

Answers	Italian School Career		International School Career		Total	
	a.v.	%	a.v.	%	a.v.	%
A - Definitely YES	26	39,4%	18	58,1%	44	45,4%
B - More YES than NO	30	45,5%	9	29,0%	39	40,2%
C - More NO than YES	10	15,2%	4	12,9%	14	14,4%
D - Definitely NO	0	0,0%	0	0,0%	0	0,0%
Total	66	100%	31	100%	97	100%
NA	0		0		0	

Comparison of positive answers (A+B) based on School Career options (in %)

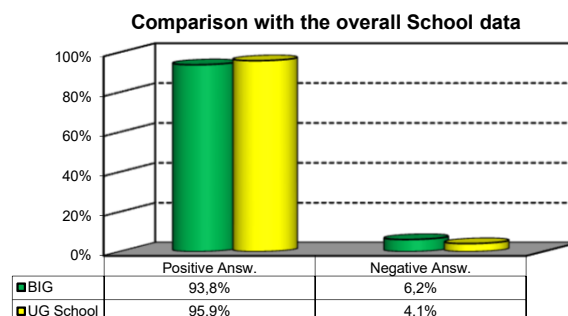
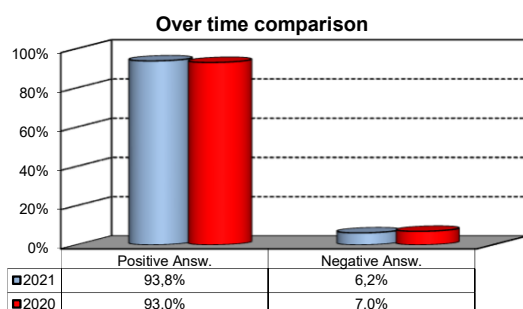


2) if you answered " More NO than YES" or "Definitely NO", indicate the subject or the subjects for which your previous knowledge revealed to be insufficient:

	a.v.	%
ACCOUNTING AND FINANCIAL STATEMENT ANALYSIS	5	12,8%
QUANTITATIVE METHODS FOR SOCIAL SCIENCES	5	12,8%
QUANTITATIVE METHODS FOR SOCIAL SCIENCES (MODULE I - MATHEMATICS)	4	10,3%
INTERNATIONAL RELATIONS	4	10,3%
Altro	21	53,8%
Total	39	100%

3) On the whole, do you appreciate the qualifications you acquired at the end of the Bachelor program at Bocconi?

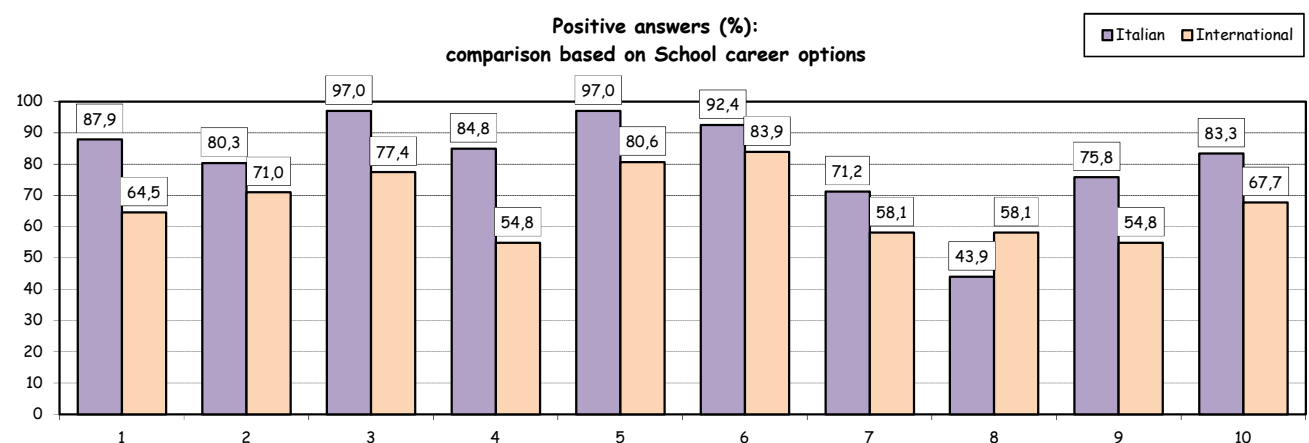
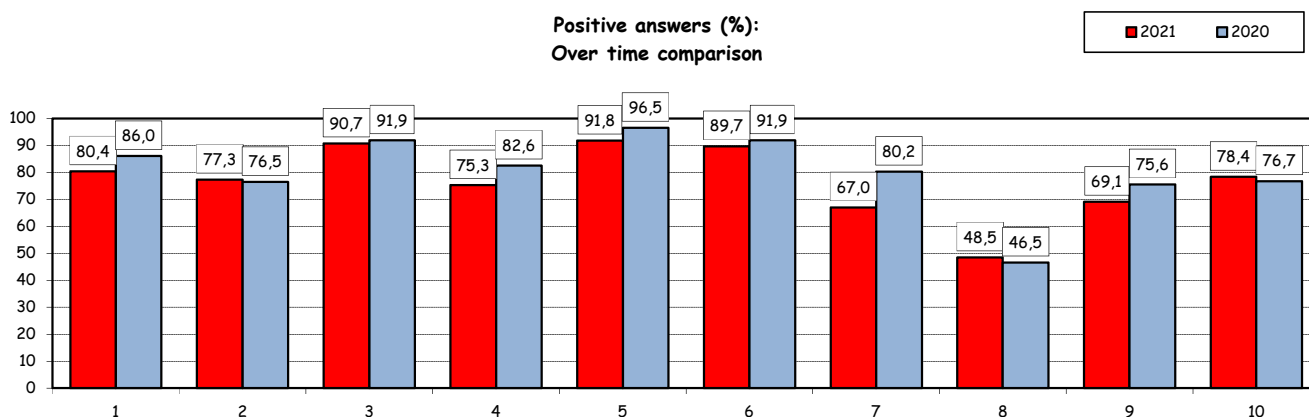
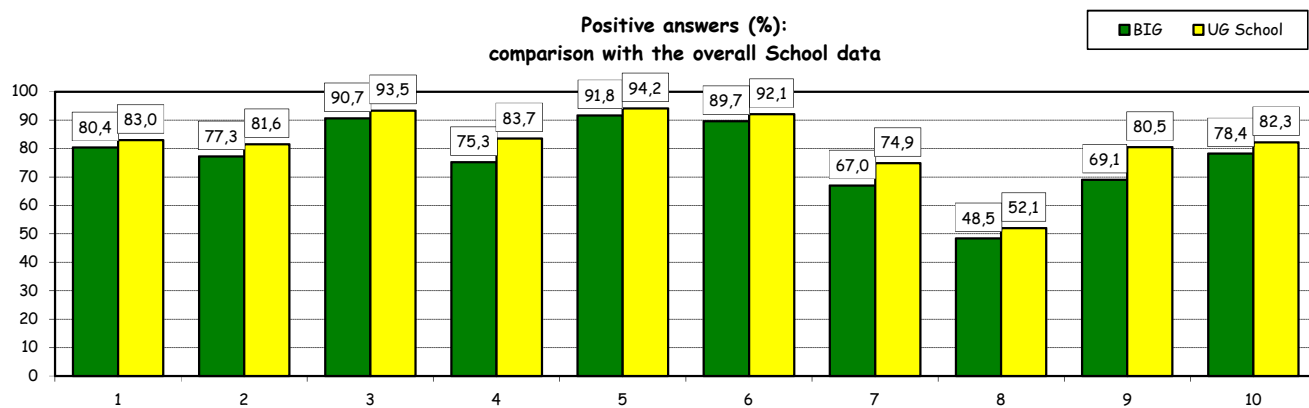
Aswers	Italian school Career		Int.nal School Career		Total	
	v.a.	%	v.a.	%	v.a.	%
A - Definitely YES	33	50,0%	12	38,7%	45	46,4%
B - More YES than NO	30	45,5%	16	51,6%	46	47,4%
C - More NO than YES	3	4,5%	1	3,2%	4	4,1%
D - Definitely NO	0	0,0%	2	6,5%	2	2,1%
Total	66	100%	31	100%	97	100%
NA	0		0		0	



Study experience

4) Do you think that your course of study at Bocconi has contributed to the development of the following skills?

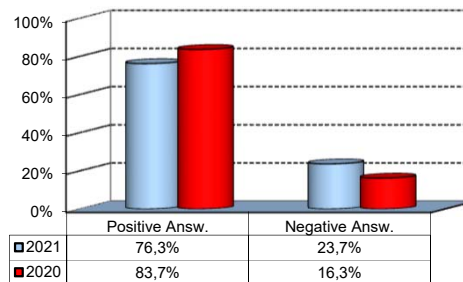
Soft Skill	Item	Definitely YES		More YES than NO		More NO than YES		Definitely NO		Total		n.a.
		a.v.	%	a.v.	%	a.v.	%	a.v.	%	a.v.	%	a.v.
1	Ability to work on a team	42	43,3	36	37,1	16	16,5	3	3,1	97	100,0	0
2	Interpersonal skills	29	29,9	46	47,4	17	17,5	5	5,2	97	100,0	0
3	Organizational skills	56	57,7	32	33,0	7	7,2	2	2,1	97	100,0	0
4	Critical thinking skills	29	29,9	44	45,4	13	13,4	11	11,3	97	100,0	0
5	Ability to analyze and select information	53	54,6	36	37,1	6	6,2	2	2,1	97	100,0	0
6	Problem-solving ability	29	29,9	58	59,8	9	9,3	1	1,0	97	100,0	0
7	Written communication skills	34	35,1	31	32,0	20	20,6	12	12,4	97	100,0	0
8	Verbal communication skills	12	12,4	35	36,1	31	32,0	19	19,6	97	100,0	0
9	Ability to cope with stress	35	36,1	32	33,0	16	16,5	14	14,4	97	100,0	0
10	Computer Skills	21	21,6	55	56,7	14	14,4	7	7,2	97	100,0	0



Study experience

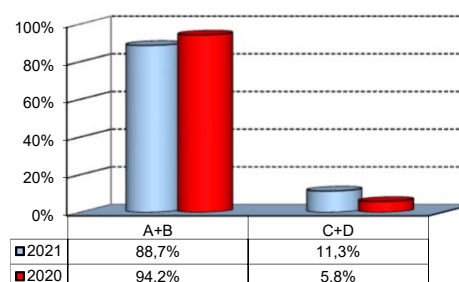
5) Do you think that the courses in your curriculum were adequately coordinated with each other?

	a.v.	%
A - Definitely YES	19	19,6%
B - More YES than NO	55	56,7%
C - More NO than YES	18	18,6%
D - Definitely NO	5	5,2%
Total	97	100%
NA	0	



6a) Do you think that the overall study load was compatible with the length of the program?

	a.v.	%
A - Definitely YES	38	39,2%
B - More YES than NO	48	49,5%
C - More NO than YES	10	10,3%
D - Definitely NO	1	1,0%
Total	97	100%
NA	0	



6b) Specifically, do you believe that the study load was excessive or insufficient?

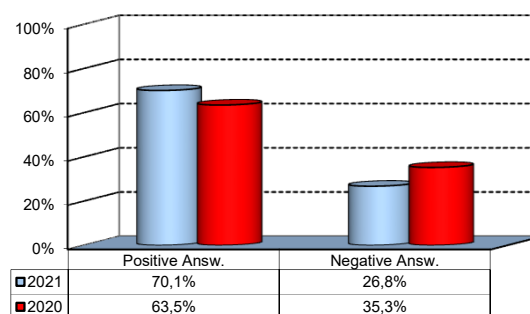
(In case of answer "C" and "D" to item no.6a)

	a.v.	% 2021	% 2020
Excessive	8	80,0%	50,0%
Insufficient	2	20,0%	50,0%
Total	10	100%	100%
NA	0		

Final Report

1) Do you think that the supervision and assistance for preparing for your final report (internship report, final paper or other) were adequate?

	a.v.	%
A - Definitely YES	34	35,1%
B - More YES than NO	34	35,1%
C - More NO than YES	18	18,6%
D - Definitely NO	8	8,2%
E - Supervision was not expected	3	3,1%
Total	97	100%
NA	0	

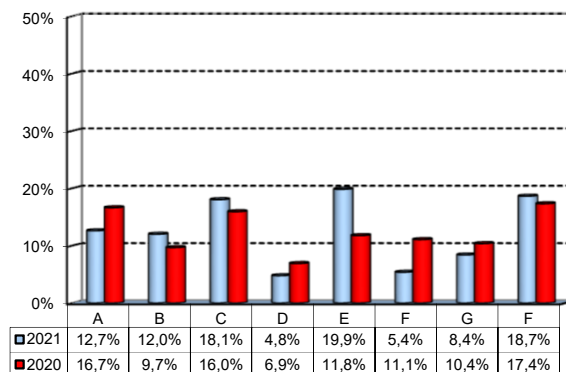


Extracurricular Activities

1) Which of the following extracurricular activities did you attend during the Bachelor Program?

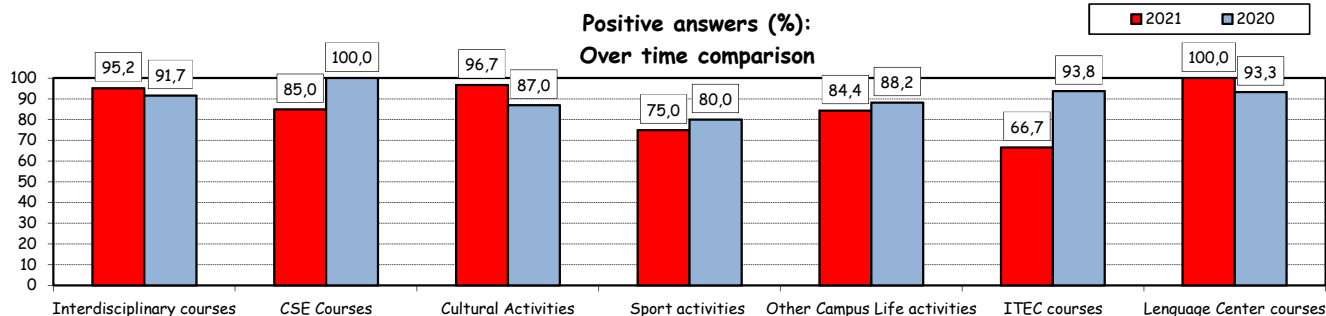
(multiple answers admitted)

	a.v.	%
A - Interdisciplinary courses ("Sapere a tutto campo")	21	12,7%
B - Counseling and Self-Empowerment courses (CSE)	20	12,0%
C - Cultural Activities (visit museums, concerts, theatre and cinema, various issues)	30	18,1%
D - Sport activities	8	4,8%
E - Other Campus Life activities	33	19,9%
F - IT Education Center courses (ITEC)	9	5,4%
G - Language Center courses	14	8,4%
H - None	31	18,7%
Total	166	100%
NA	0	



2) Do you think that the activities you took part in contributed to your cultural/educational enrichment?

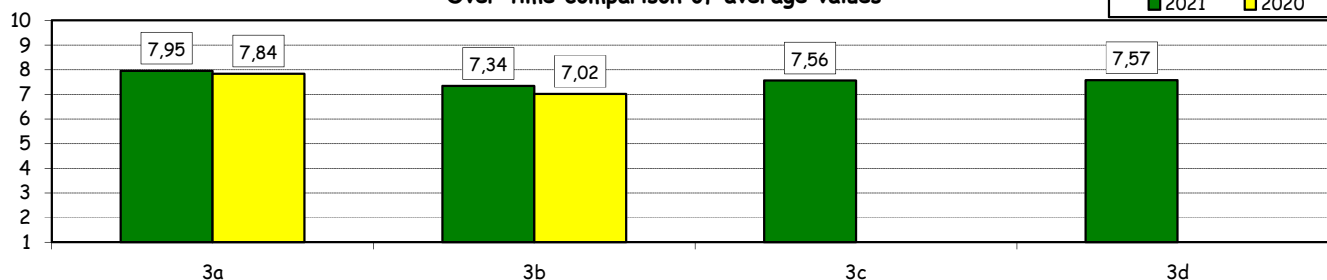
	Definitely YES		More YES than NO		More NO than YES		Definitely NO		Total		NA
	a.v.	%	a.v.	%	a.v.	%	a.v.	%	a.v.	%	a.v.
A - Interdisciplinary courses	12	57,1	8	38,1	1	4,8	0	0,0	21	100,0	0
B - CSE courses	8	40,0	9	45,0	2	10,0	1	5,0	20	100,0	0
C - Cultural Activities	22	73,3	7	23,3	1	3,3	0	0,0	30	100,0	0
D - Sport activities	4	50,0	2	25,0	2	25,0	0	0,0	8	100,0	0
E - Other Campus Life activities	17	53,1	10	31,3	3	9,4	2	6,3	32	100,0	1
F - ITEC courses	5	55,6	1	11,1	3	33,3	0	0,0	9	100,0	0
G - Language Center courses	10	76,9	3	23,1	0	0,0	0	0,0	13	100,0	1



How would you evaluate:

Item	Negative				Positive				Total		NA
	1-2		3-4-5		6-7-8		9-10		a.v.	%	
Answers	a.v.	%	a.v.	%	a.v.	%	a.v.	%	a.v.	%	
3a) The range and interest of programmes offered	1	1,5	1	1,5	44	66,7	20	30,3	66	100,0	0
3b) The support you received from the Campus Life Office	2	3,1	5	7,7	44	67,7	14	21,5	65	100,0	1
3c) The support you received from ITEC	0	0,0	1	11,1	6	66,7	2	22,2	9	100,0	0
3d) The support you received from Language Center	1	7,1	0	0,0	9	64,3	4	28,6	14	100,0	0

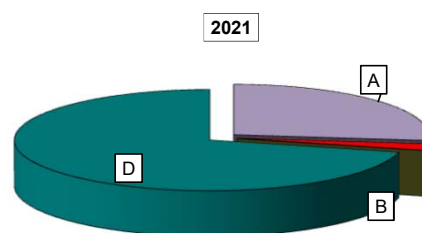
Over time comparison of average values



Experience Of Studying Abroad

1) Type of experience:

Answers	a.v.	%	
		2021	2020
A - Exchange	26	26,8%	86,0%
B - Double Degree	2	2,1%	0,0%
C - Free-Mover	0	0,0%	1,2%
D - None	69	71,1%	12,8%
Total	97	100%	100%
NA	0		

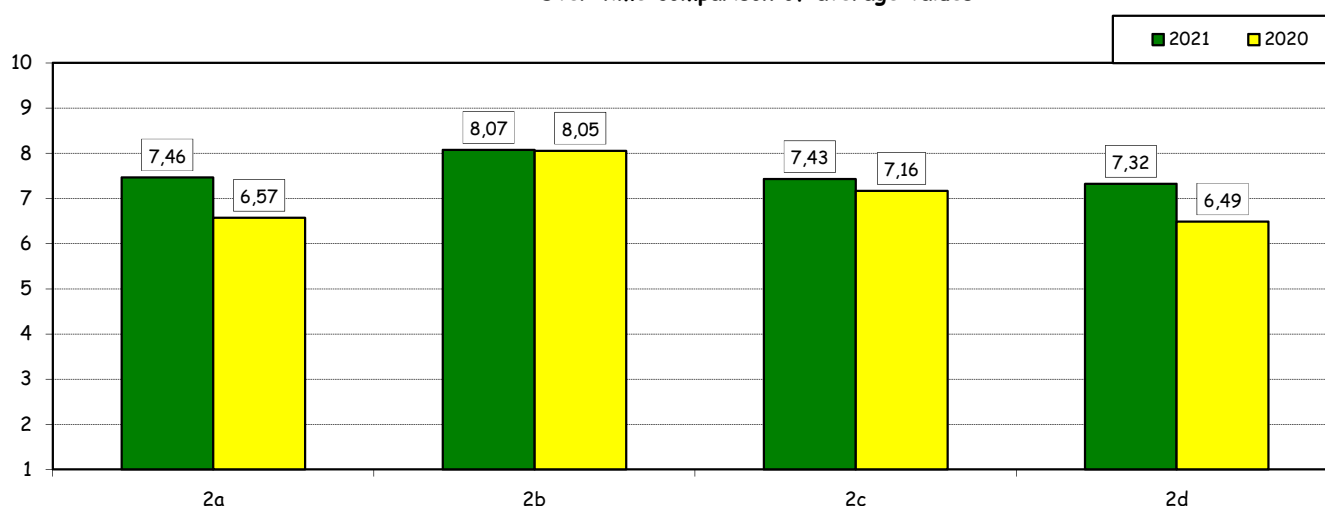


How would you evaluate:

(only A or B answers to item no.1)

Item	Answers	Negative				Positive				Total		N.A.
		1-2		3-4-5		6-7-8		9-10		a.v.	%	a.v.
		a.v.	%	a.v.	%	a.v.	%	a.v.	%	a.v.	%	a.v.
2a) Quality and completeness of information provided through: "International Week," emails, brochures, International Relations Service web page		2	7,1	3	10,7	14	50,0	9	32,1	28	100,0	0
2b) The range and interest of programs offered.		1	3,6	0	0,0	17	60,7	10	35,7	28	100,0	0
2c) The convenience of the study abroad desk's opening hours.		1	3,6	2	7,1	17	60,7	8	28,6	28	100,0	0
2d) The support you received from Bocconi International Relations.		2	7,1	2	7,1	15	53,6	9	32,1	28	100,0	0

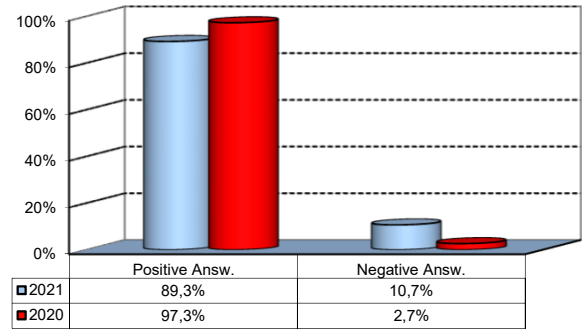
Over time comparison of average values



Experience Of Studying Abroad

3) Would you positively evaluate this experience?

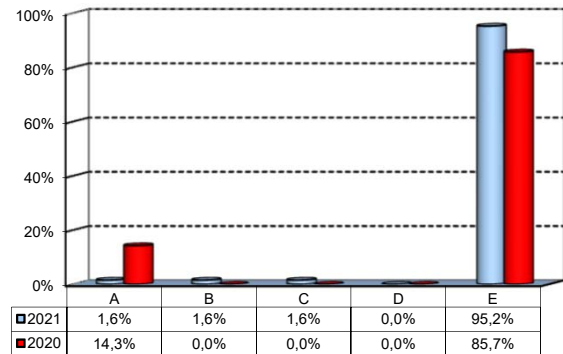
Answers	a.v.	%
A - Definitely YES	13	46,4%
B - More YES than NO	12	42,9%
C - More NO than YES	2	7,1%
D - Definitely NO	1	3,6%
Total	28	100%
NA	1	



(In case of answer "D" to item no.1)

4) Please indicate why you did not attend a period of study abroad (select all relevant reasons):

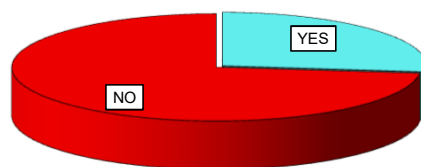
Answers	a.v.	%
A-Lack of interest in this kind of experience	1	1,6%
B-Absence of the requirements needed for participation in the program selected	1	1,6%
C-Rejection of your application	1	1,6%
D-Lack of time during the period of study	0	0,0%
E-Other (personal, family, organizational reasons, etc.)	60	95,2%
Total	63	100%
NA	6	



Internship Activities

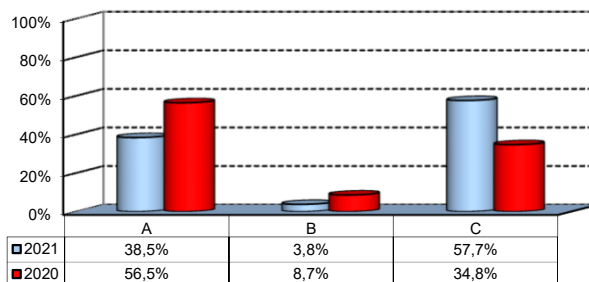
1) Did you attend an internship recognized by the Bachelor program?

	a.v.	2021	2020
YES	26	26,8%	26,7%
NO	71	73,2%	73,3%
Total	97	100%	100%
NA	0		



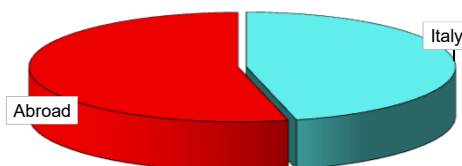
2) How did you find the internship?

	a.v.	%
A - Through the University's Placement Services*	10	38,5%
B - Through the faculty members of the degree program	1	3,8%
C - Through autonomous way then recognized by the degree program	15	57,7%
Total	26	100%
NA	0	



3) Where did you do the internship recognised by the Bachelor Program?

	a.v.	2021	2020
Italy	12	46,2%	56,5%
Abroad	14	53,8%	43,5%
Total	26	100%	100%
NA	0		

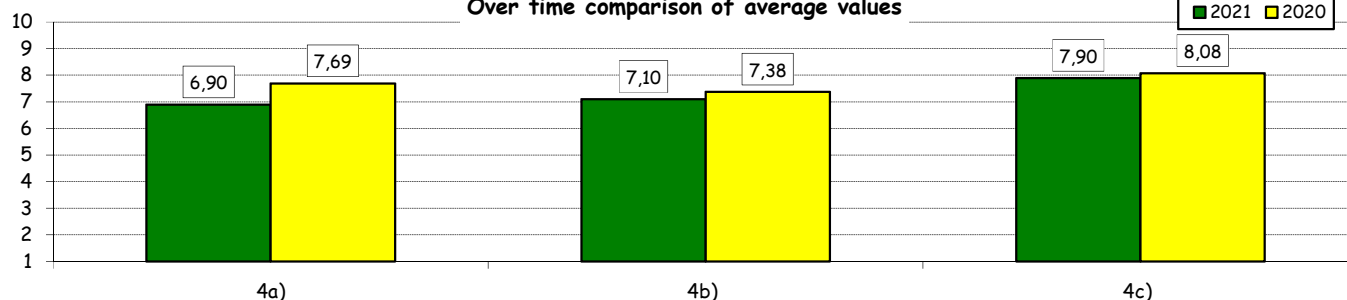


How would you evaluate:

(In case of answer "A" to item no.2)

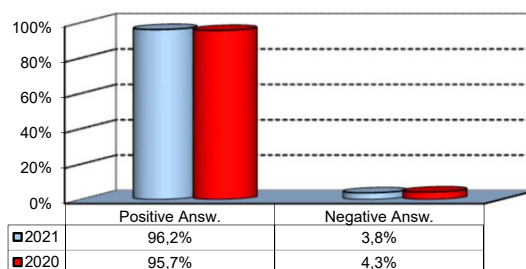
Item	Answers	Negative						Positive				Total	N.A.
		1-2		3-4-5		6-7-8		9-10		a.v.	%		
		a.v.	%	a.v.	%	a.v.	%	a.v.	%				
4a) The convenience of the internship front desk's opening hours.		0	0,0	3	30,0	6	60,0	1	10,0	10	100,0	0	
4b) The number and variety of opportunities offered		1	10,0	2	20,0	4	40,0	3	30,0	10	100,0	0	
4c) The support you received from the Internship Office.		0	0,0	1	10,0	3	30,0	6	60,0	10	100,0	0	

Over time comparison of average values



5) Would you positively evaluate this experience?

	a.v.	%
A - Definitely YES	13	50,0%
B - More YES than NO	12	46,2%
C - More NO than YES	1	3,8%
D - Definitely NO	0	0,0%
Total	26	100%
NA	0	



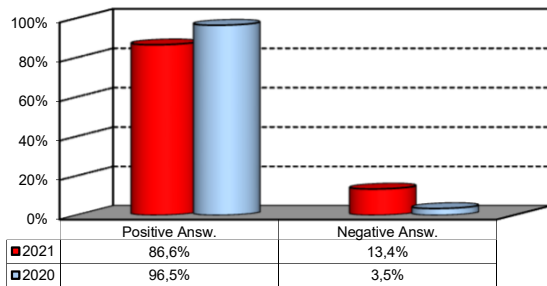
*JobGate, Internship Programs, Companies' meetings and presentations, Bocconi&Jobs, Placement Library's services, Curricular Internship Special, websites reported in the section 'Lavoro.net'

General satisfaction and short-term plans

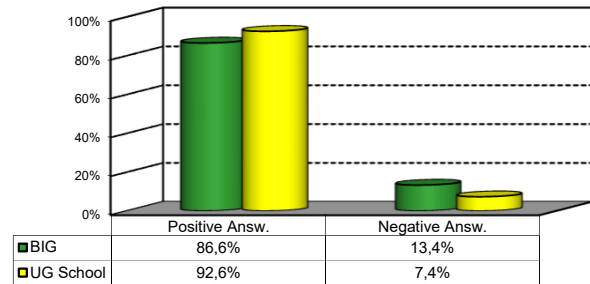
1) Are you satisfied overall with the study program you attended?

Answers	Italian School career		Int.nal School Career		Total	
	a.v.	%	a.v.	%	a.v.	%
A - Definitely YES	25	37,9%	9	29,0%	34	35,1%
B - More YES than NO	35	53,0%	15	48,4%	50	51,5%
C - More NO than YES	6	9,1%	4	12,9%	10	10,3%
D - Definitely NO	0	0,0%	3	9,7%	3	3,1%
Total	66	100%	31	100%	97	100%
NA	0		0		0	

Over time comparison



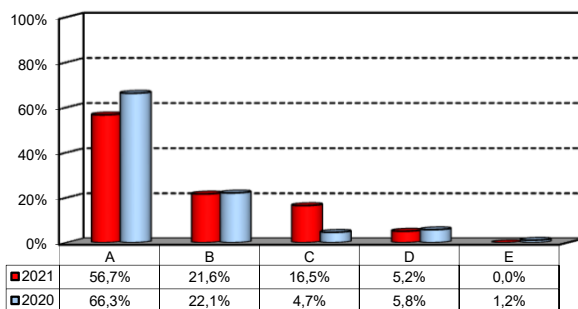
Comparison with the overall School data



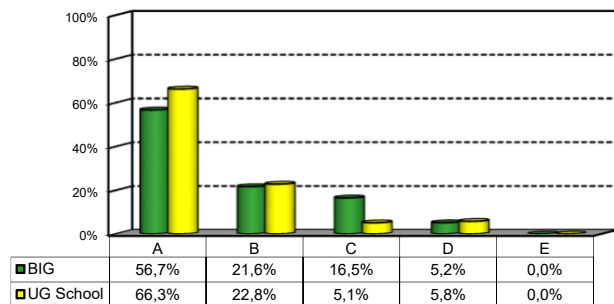
2a) If you could go back in time, would you enroll in the University again?

Answers	Italian School career		Int.nal School Career		Total	
	a.v.	%	a.v.	%	a.v.	%
A - YES, in the same Bachelor Program at this University	41	62,1%	14	45,2%	55	56,7%
B - YES, in another Program at this University	13	19,7%	8	25,8%	21	21,6%
C - YES, in the same Program but at another University	9	13,6%	7	22,6%	16	16,5%
D - YES, in another Program at another University	3	4,5%	2	6,5%	5	5,2%
E - NO, I would not enrol in university anymore	0	0,0%	0	0,0%	0	0,0%
Total	66	100%	31	100%	97	100%
NA	0		0		0	

Over time comparison



Comparison with the overall School data



General satisfaction and short-term plans

(In case of answer "B", "C", "D" or "E" to item no.2a)

2b) Why would you make a different choice?

Answers	Italian School career		Int.nal School Career		Total		2020 %
	v.a.	%	v.a.	%	2021 v.a.	%	
A - My interest has changed during this time / I discovered that I have different attitudes	10	45,5%	8	47,1%	18	46,2%	33,3%
B - The Bachelor program did not mirror my expectations	5	22,7%	4	23,5%	9	23,1%	22,2%
C- I have not been admitted to the Bachelor Program selected as first-choice.	2	9,1%	0	0,0%	2	5,1%	0,0%
D- The campus and its facilities and services were not up to my expectations	1	4,5%	3	17,6%	4	10,3%	11,1%
E-I would have preferred to attend the same Bachelor Program but taught in English.	0	0,0%	0	0,0%	0	0,0%	0,0%
F - Other reasons	4	18,2%	2	11,8%	6	15,4%	33,3%
Total	22	100%	17	100%	39	100%	100%
NA	3		0		3		

F- Other reasons:

Avendolo saputo sarei andato in Bicocca, poiche' e' pieno di figa. Per quanto riguarda il corso, quello da me frequentato in Bocconi mi e' molto piaciuto ma a senno di poi avrei preferito fare economia
Courses were too quantitative for no reason on many occasions such as history or international relations in comparison to the same courses at top universities such as Oxford or Cambridge. The way of teaching across the board was very classic and outdated.
First, the BIG program did not satisfy my expectations. Second, Bocconi was not my first choice. Third, Bocconi as an institution clearly shows no attention for the mental health and well-being of its students.
Il mio metodo di studio e i miei interessi sarebbero stati piu' soddisfatti dall'impostazione dello stesso corso in un altro ateneo
Mi sono trovata molto bene all'universita' all'estero e' ho trovato piu' attenzione allo studente, classi piu' piccole, professori meno cattedratici, piu' pensiero critico, spazio didattico per le discussioni ed esami in cui bisognava argomentare no crocette
The University is a faceless organisation that does absolutely nothing to promote student unity. No financial support for student associations while all other major universities do. Bocconi also charges many additional fees on top of its expensive price

3) In the near future do you intend to:

	Italian School career		Int.nal School Career		Total		2020 %
	a.v.	%	a.v.	%	2021 a.v.	%	
A- To go on with university studies at Bocconi (Master of Science, one-year Master of Science)	34	51,5%	8	25,8%	42	43,3%	49,4%
B-To go on with university studies at another Italian University	4	6,1%	2	6,5%	6	6,2%	5,1%
C- To go on with university studies abroad	26	39,4%	16	51,6%	42	43,3%	34,2%
D - To immediately look for a job	0	0,0%	1	3,2%	1	1,0%	10,1%
E - To accept a job proposal received	2	3,0%	2	6,5%	4	4,1%	1,3%
F - To continue to do the job started during this degree program	0	0,0%	2	6,5%	2	2,1%	0,0%
Total	66	100%	31	100%	97	100%	100%
NA	0		0		0		

General satisfaction and short-term plans

4) If you intend to continue your university studies at another University (in Italy or abroad), what are the reasons for your choice? (multiple answers admitted)

	Italian School career		Int.nal School Career		Total		
	a.v.	%	a.v.	%	a.v.	2021 %	2020 %
A - I would like to attend a more prestigious university	4	8,5%	7	21,2%	11	13,8%	5,8%
B - I would like to build a strong international curriculum	22	46,8%	8	24,2%	30	37,5%	37,7%
C- I can not bear the cost of studies (tuition fees and cost of living)	2	4,3%	2	6,1%	4	5,0%	13,0%
D - I can not bear the cost of studies (tuition fees and cost of living)	1	2,1%	1	3,0%	2	2,5%	2,9%
E- The administrative services are not sufficiently efficient	0	0,0%	4	12,1%	4	5,0%	4,3%
F - I think that the contents of Bocconi's MSc programs do not differ much from those of undergraduate programs	12	25,5%	6	18,2%	18	22,5%	23,2%
G - Other reasons	6	12,8%	5	15,2%	11	13,8%	13,0%
Total	47	100%	33	100%	80	100%	100%
NA	0		0		0		

G - Other reasons:

Bocconi does not care about its students but sees them as money machines. The extra fees that we have to pay are unacceptable (250e to graduate? 40e to print my academic transcript? 260e for compulsory yet useless ECDL?) The lack of any support of student activities supports my point further. In all other major universities, associations are helped financially. Bocconi does not care. It prefers to build new buildings with students' money and then ask them to pay for access (gyms are free in all other major universities). Lastly, if Bocconi wants to do courses in English, it has to have staff that speak proper English and has to properly proofread the books that the staff write. I had books that were full of mistakes written by teachers that could hardly speak english. I have loved my time in Milan and have met amazing people and have had great fun - but none of this was thanks to Bocconi. I will not be recommending it to anyone I know and do not believe it should be so well ranked

Desidero frequentare un corso non presente in questo ateneo

I want a different style of teaching that is more intimate with professors.

I would like to attend a university that is more interested in responding to its students needs than just collecting their tuition.

La Bocconi non offre una Magistrale in linea con i miei interessi (Environmental Economics)

Non mi interessano le lauree magistrali alla Bocconi

Oltre al voler perseguire una carriera internazionale, ho sviluppato un interesse per l'ambito della sicurezza internazionale (anti terrorismo, storia delle organizzazioni quali ONU e OSCE, assistenza umanitaria) e le lauree magistrali in Bocconi non offrono la possibilita' di specializzarsi in tale settore, ne' opzionali inerenti (i pochi considerabili affini sono accessibili esclusivamente agli studenti di Giurisprudenza)

Studio una materia non presente in Bocconi e volevo anche andare via dall'universita'.

The teaching at Bocconi is completely unsatisfactory.

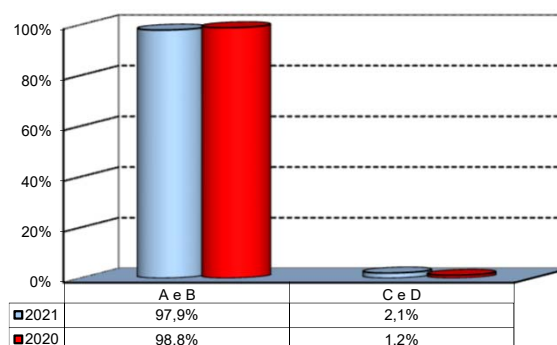
Vedi risposta precedente sul perche' probabilmente non mi iscriverei in Bocconi

Vorrei provare un' altra impostazione alle materie che studiamo e per il mio corso in triennale la bocconi non offre abbastanza scelta per una magistrale

Infrastructure: Classrooms, Library And Facilities

1) What is your opinion about the classrooms where lessons and other teaching activities have been held?*

Answers	a.v.	%
A - Always or nearly always adequate	70	72,2%
B - Often adequate	24	24,7%
C - Rarely adequate	2	2,1%
D - Never adequate	0	0,0%
E - I did not use them	1	1,0%
Total	97	100%
NA	0	

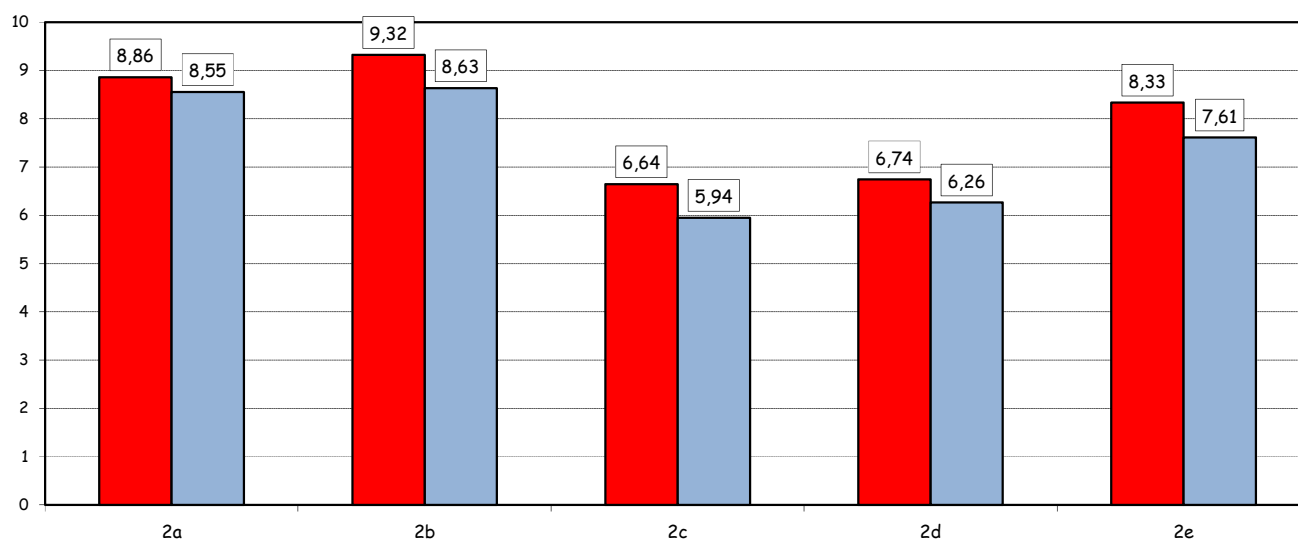


2) How would you evaluate:

Item	Answers	Negative				Positive				Total		N.R.
		1-2		3-4-5		6-7-8		9-10		a.v.	%	
		a.v.	%	a.v.	%	a.v.	%	a.v.	%			
a) The adequacy of the audio and multimedia systems (e.g. instructor's computer, projectors, video players) installed in the classrooms		0	0,0	1	1,0	30	30,9	66	68,0	97	100,0	0
b) The cleanliness of classrooms and of other common areas on campus (corridors, halls, study rooms)		0	0,0	1	1,0	14	14,4	82	84,5	97	100,0	0
c) The adequacy of the amount of areas/seats reserved to individual study in the University Library		11	11,6	18	18,9	38	40,0	28	29,5	95	100,0	2
d) The adequacy of the amount of areas/seats reserved to individual study in other buildings on campus		10	10,3	18	18,6	39	40,2	30	30,9	97	100,0	0
e) The clarity and adequacy of the signage system on campus		1	1,0	8	8,3	25	26,0	62	64,6	96	100,0	1

Over time comparison of average values

■ 2021 ■ 2020

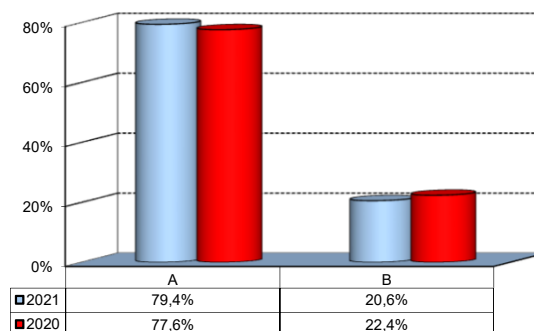


(*): the percentage shown on the graphs is calculated by excluding the responses of those who declare that they have not used the service.

Infrastructure: Classrooms, Library And Facilities

3) What is your overall opinion on the PC Labs and IT facilities provided by the University?

Answers	a.v.	%
A- Adequate in number	54	55,7%
B- Inadequate in number	14	14,4%
C- Never used	29	29,9%
Total	97	100%
NA	0	

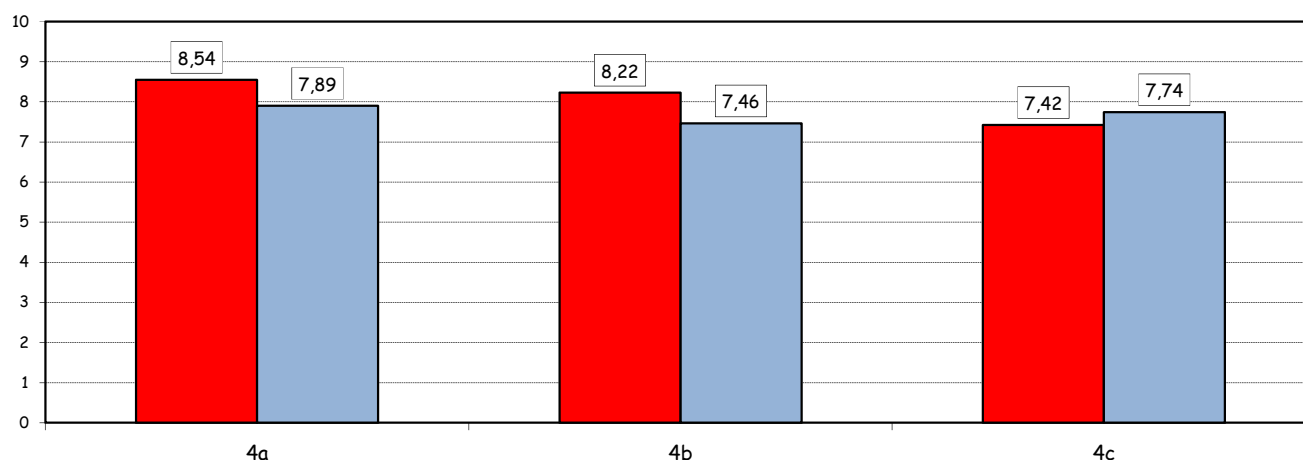


4) How would you evaluate:

Item	Answers	Negative				Positive				Total		NA
		1-2		3-4-5		6-7-8		9-10		a.v.	%	
		a.v.	%	a.v.	%	a.v.	%	a.v.	%			
a) The availability of technical staff supporting students (Tutors) in PC Labs [^]		0	0,0	2	2,9	27	39,7	39	57,4	68	100,0	0
b) The convenience of the PC Labs' opening hours [^]		0	0,0	4	6,0	31	46,3	32	47,8	67	100,0	1
c) The level of accessibility and usability of the University's IT services (Internet access points, Punto Blu, Virtual Punto Blu, wireless connection)		3	3,2	13	13,7	47	49,5	32	33,7	95	100,0	2

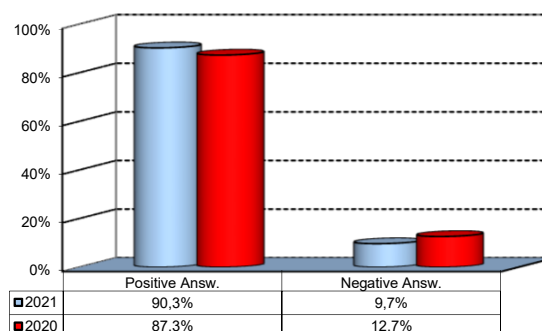
Over time comparison of average values

■ 2021 ■ 2020



5) What is your overall opinion on the Library's services, such as support for individual study?*

Answers	a.v.	%
A - Very Positive	31	32,0%
B - Quite positive	34	35,1%
C - Quite negative	6	6,2%
D - Very Negative	1	1,0%
E - Never used	25	25,8%
Total	97	100%
NA	0	



([^]): Only in case of answer "A" or "B" to item no.3

(*): the percentage shown on the graphs is calculated by excluding the responses of those who declare that they have not used the service.