

EVALUATION OF THE DEGREE PROGRAM AND THE UNIVERSITY EXPERIENCE

BACHELOR IN INTERNATIONAL ECONOMICS AND FINANCE

N° QUESTIONNAIRES PROCESSED: 225

N° OF GRADUATE STUDENTS: 241

RESPONSE RATE: 93,4%



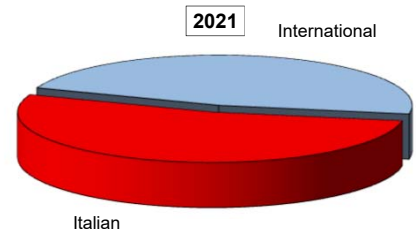
EVALUATION OF STUDENT EXPERIENCE

International Economics and Finance

General information

School Career

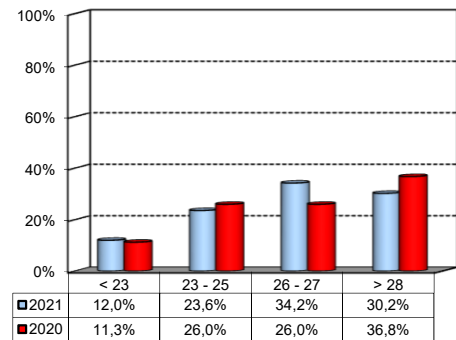
Answers	a.v.	%	%
		2021	2020
Italian	119	52,9%	53,4%
International	106	47,1%	46,6%
Total	225	100%	100%
NA	0		



Average mark of the exams passed:

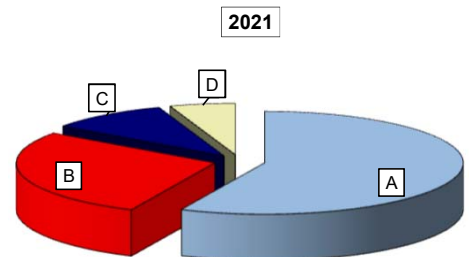
(approximate average expressed in 30/30)

Answers	a.v.	%
< 23	27	12,0%
23 - 25	53	23,6%
26 - 27	77	34,2%
> 28	68	30,2%
Total	225	100%
NA	0	



How many of the courses included in your curriculum did you attend regularly?

Answers	a.v.	%	%
		2021	2020
A - More than 75%	128	56,9%	40,2%
B - Between 50 and 75%	63	28,0%	22,5%
C - Between 25 and 50%	22	9,8%	6,9%
D - Less than 25%	12	5,3%	30,4%
Total	225	100%	100%
NA	0		

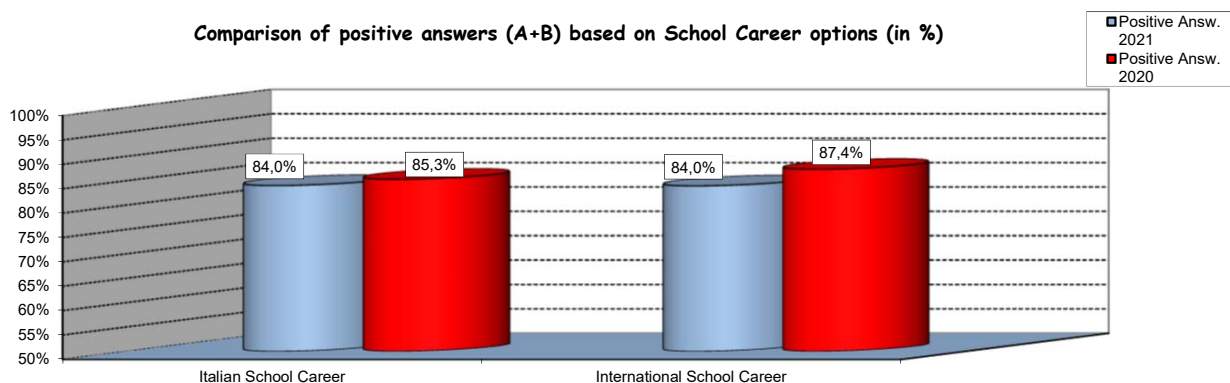


Study experience

1) Was the knowledge acquired during secondary school adequate to undertake your Bachelor program?

Answers	Italian School Career		International School Career		Total	
	a.v.	%	a.v.	%	a.v.	%
A - Definitely YES	54	45,4%	44	41,5%	98	43,8%
B - More YES than NO	46	38,7%	45	42,5%	91	40,6%
C - More NO than YES	18	15,1%	14	13,2%	32	14,3%
D - Definitely NO	1	0,8%	2	1,9%	3	1,3%
Total	119	100%	105	99%	224	100%
NA	0		1		1	

Comparison of positive answers (A+B) based on School Career options (in %)

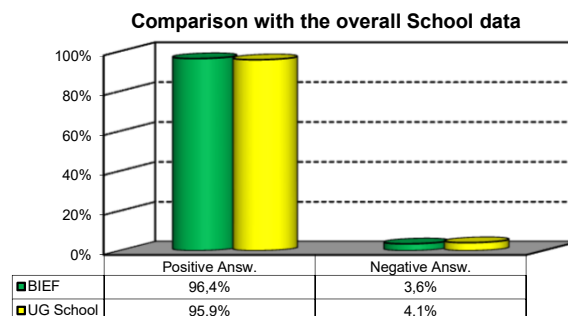
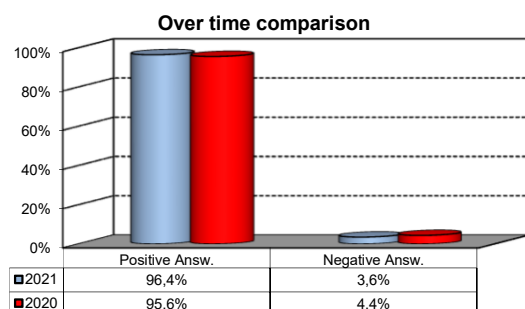


2) if you answered "More NO than YES" or "Definitely NO", indicate the subject or the subjects for which your previous knowledge revealed to be insufficient:

	a.v.	%
MATEMATICA - MODULO 1 (GENERALE)	12	13,3%
COMPUTER SCIENCE	11	12,2%
STATISTICA	8	8,9%
MATEMATICA	7	7,8%
Altro	52	57,8%
Total	90	100%

3) On the whole, do you appreciate the qualifications you acquired at the end of the Bachelor program at Bocconi?

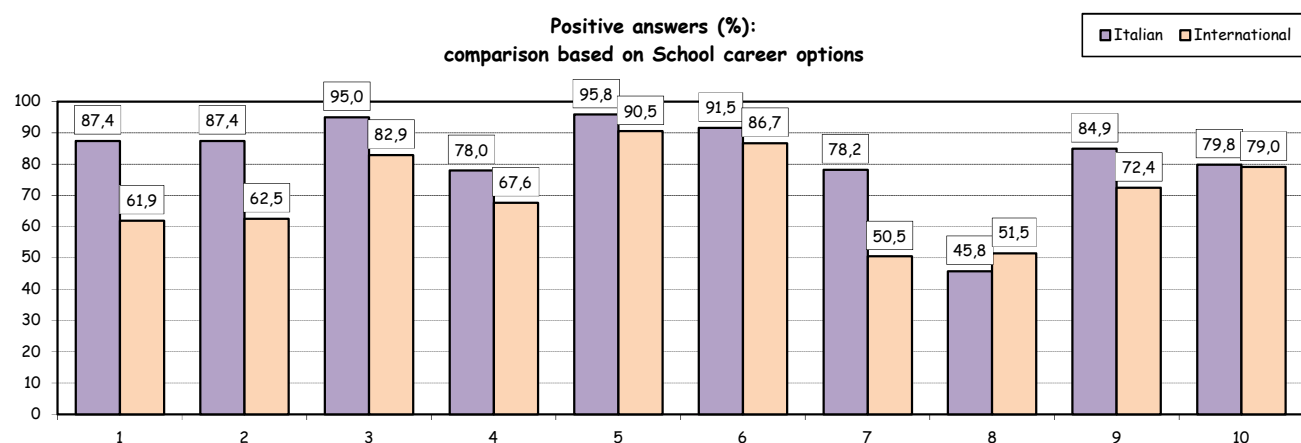
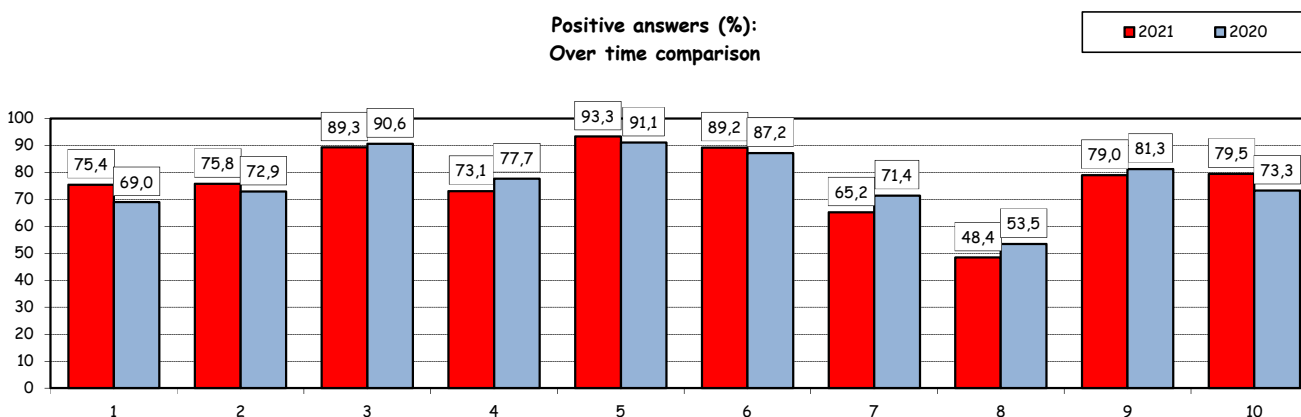
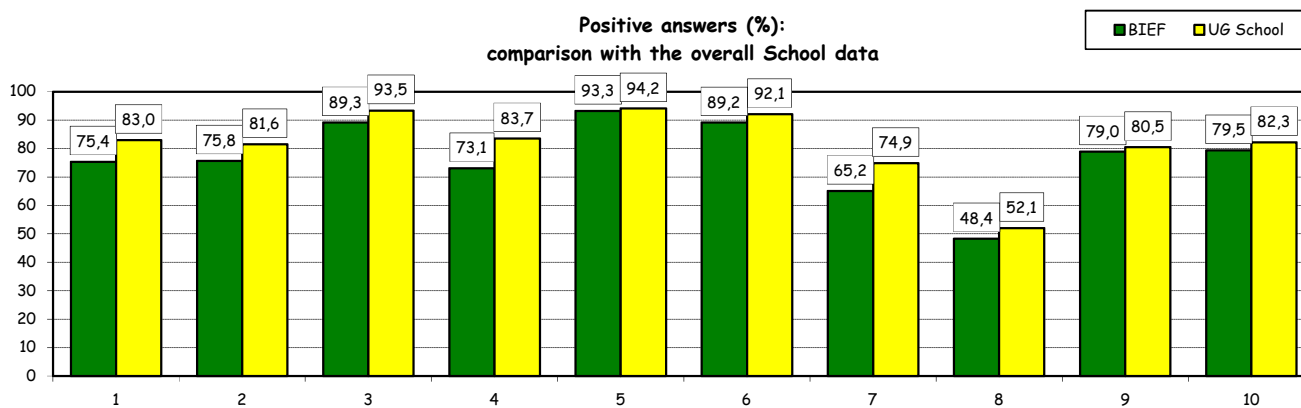
Aswers	Italian school Career		Int.nal School Career		Total	
	v.a.	%	v.a.	%	v.a.	%
A - Definitely YES	68	57,1%	52	49,1%	120	53,3%
B - More YES than NO	49	41,2%	48	45,3%	97	43,1%
C - More NO than YES	2	1,7%	5	4,7%	7	3,1%
D - Definitely NO	0	0,0%	1	0,9%	1	0,4%
Total	119	100%	106	100%	225	100%
NA	0		0		0	



Study experience

4) Do you think that your course of study at Bocconi has contributed to the development of the following skills?

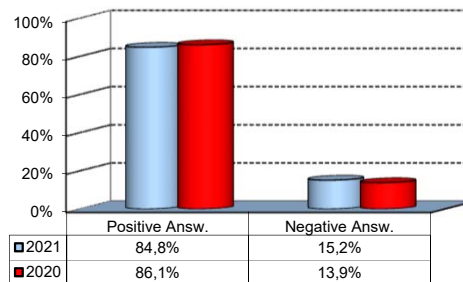
Soft Skill	Item	Definitely YES		More YES than NO		More NO than YES		Definitely NO		Total		n.a.
		a.v.	%	a.v.	%	a.v.	%	a.v.	%	a.v.	%	a.v.
1	Ability to work on a team	75	33,5	94	42,0	47	21,0	8	3,6	224	100,0	1
2	Interpersonal skills	71	31,8	98	43,9	44	19,7	10	4,5	223	100,0	2
3	Organizational skills	111	49,6	89	39,7	20	8,9	4	1,8	224	100,0	1
4	Critical thinking skills	73	32,7	90	40,4	46	20,6	14	6,3	223	100,0	2
5	Ability to analyze and select information	111	49,6	98	43,8	13	5,8	2	0,9	224	100,0	1
6	Problem-solving ability	106	47,5	93	41,7	22	9,9	2	0,9	223	100,0	2
7	Written communication skills	73	32,6	73	32,6	55	24,6	23	10,3	224	100,0	1
8	Verbal communication skills	32	14,5	75	33,9	75	33,9	39	17,6	221	100,0	4
9	Ability to cope with stress	99	44,2	78	34,8	26	11,6	21	9,4	224	100,0	1
10	Computer Skills	75	33,5	103	46,0	38	17,0	8	3,6	224	100,0	1



Study experience

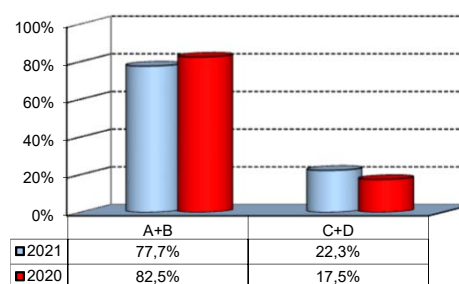
5) Do you think that the courses in your curriculum were adequately coordinated with each other?

	a.v.	%
A - Definitely YES	64	28,6%
B - More YES than NO	126	56,3%
C - More NO than YES	31	13,8%
D - Definitely NO	3	1,3%
Total	224	100%
NA	1	



6a) Do you think that the overall study load was compatible with the length of the program?

	a.v.	%
A - Definitely YES	55	24,6%
B - More YES than NO	119	53,1%
C - More NO than YES	42	18,8%
D - Definitely NO	8	3,6%
Total	224	100%
NA	1	



6b) Specifically, do you believe that the study load was excessive or insufficient?

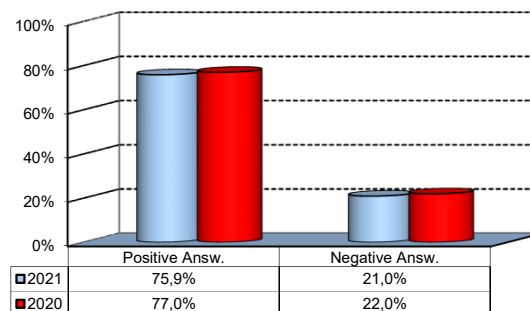
(In case of answer "C" and "D" to item no.6a)

	a.v.	% 2021	% 2020
Excessive	47	97,9%	95,8%
Insufficient	1	2,1%	4,2%
Total	48	100%	100%
NA	2		

Final Report

1) Do you think that the supervision and assistance for preparing for your final report (internship report, final paper or other) were adequate?

	a.v.	%
A - Definitely YES	86	38,4%
B - More YES than NO	84	37,5%
C - More NO than YES	35	15,6%
D - Definitely NO	12	5,4%
E - Supervision was not expected	7	3,1%
Total	224	100%
NA	1	

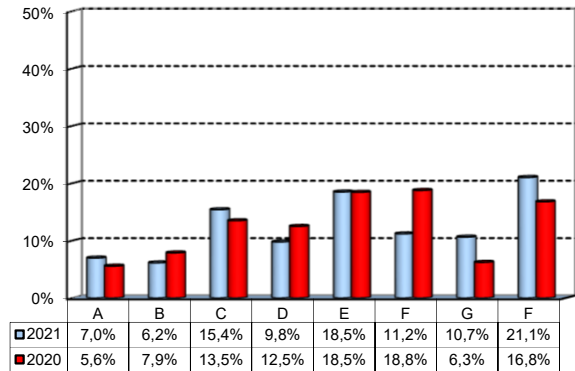


Extracurricular Activities

1) Which of the following extracurricular activities did you attend during the Bachelor Program?

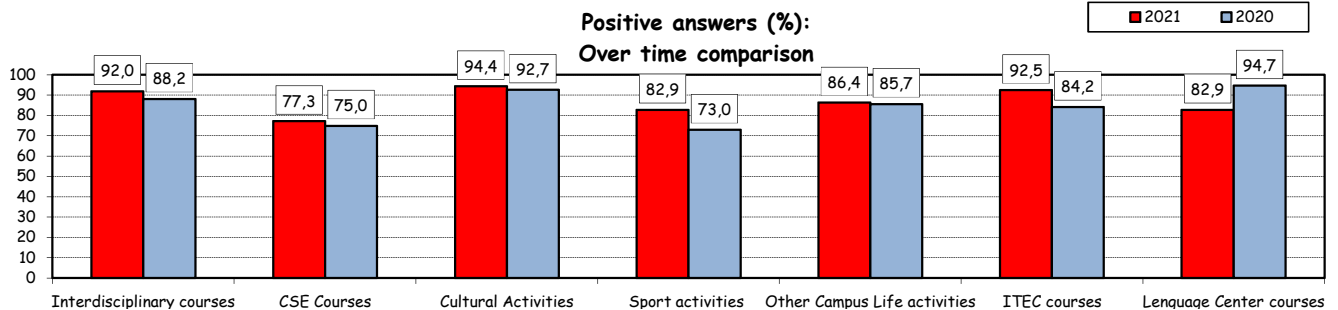
(multiple answers admitted)

	a.v.	%
A - Interdisciplinary courses ("Sapere a tutto campo")	25	7,0%
B - Counseling and Self-Empowerment courses (CSE)	22	6,2%
C - Cultural Activities (visit museums, concerts, theatre and cinema, various issues)	55	15,4%
D - Sport activities	35	9,8%
E - Other Campus Life activities	66	18,5%
F - IT Education Center courses (ITEC)	40	11,2%
G - Language Center courses	38	10,7%
H - None	75	21,1%
Total	356	100%
NA	0	



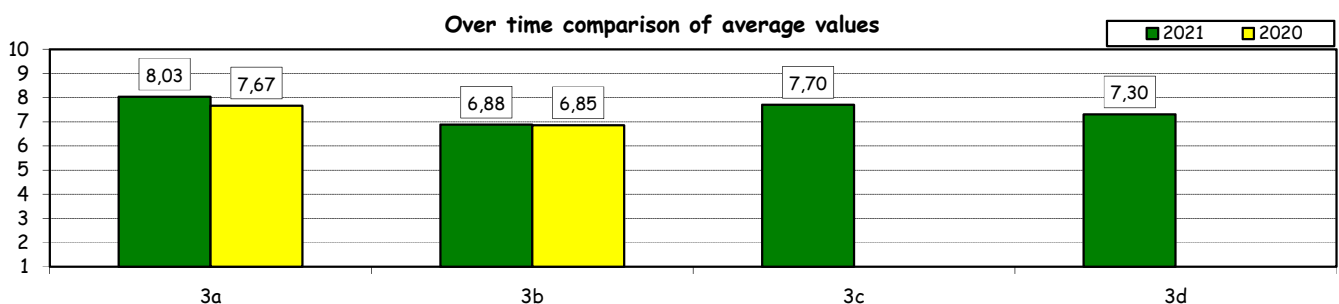
2) Do you think that the activities you took part in contributed to your cultural/educational enrichment?

	Definitely YES		More YES than NO		More NO than YES		Definitely NO		Total		NA
	a.v.	%	a.v.	%	a.v.	%	a.v.	%	a.v.	%	a.v.
A - Interdisciplinary courses	12	48,0	11	44,0	2	8,0	0	0,0	25	100,0	0
B - CSE courses	11	50,0	6	27,3	3	13,6	2	9,1	22	100,0	0
C - Cultural Activities	35	64,8	16	29,6	1	1,9	2	3,7	54	100,0	1
D - Sport activities	15	42,9	14	40,0	5	14,3	1	2,9	35	100,0	0
E - Other Campus Life activities	31	47,0	26	39,4	7	10,6	2	3,0	66	100,0	0
F - ITEC courses	20	50,0	17	42,5	3	7,5	0	0,0	40	100,0	0
G - Language Center courses	14	40,0	15	42,9	4	11,4	2	5,7	35	100,0	3



How would you evaluate:

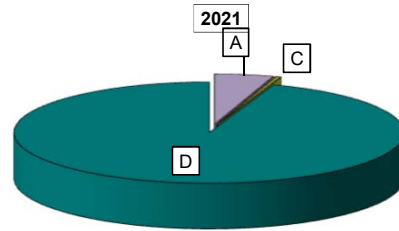
Item	Answers	Negative				Positive				Total		NA
		1-2		3-4-5		6-7-8		9-10		a.v.	%	
		a.v.	%	a.v.	%	a.v.	%	a.v.	%			
3a) The range and interest of programmes offered		3	2,0	4	2,7	86	57,7	56	37,6	149	100,0	1
3b) The support you received from the Campus Life Office		4	2,7	36	24,3	74	50,0	34	23,0	148	100,0	2
3c) The support you received from ITEC		0	0,0	3	7,5	25	62,5	12	30,0	40	100,0	0
3d) The support you received from Language Center		2	5,4	3	8,1	23	62,2	9	24,3	37	100,0	1



Experience Of Studying Abroad

1) Type of experience:

Answers	a.v.	%	
		2021	2020
A - Exchange	11	4,9%	39,9%
B - Double Degree	0	0,0%	0,0%
C - Free-Mover	1	0,4%	5,4%
D - None	212	94,6%	54,7%
Total	224	100%	100%
NA	1		

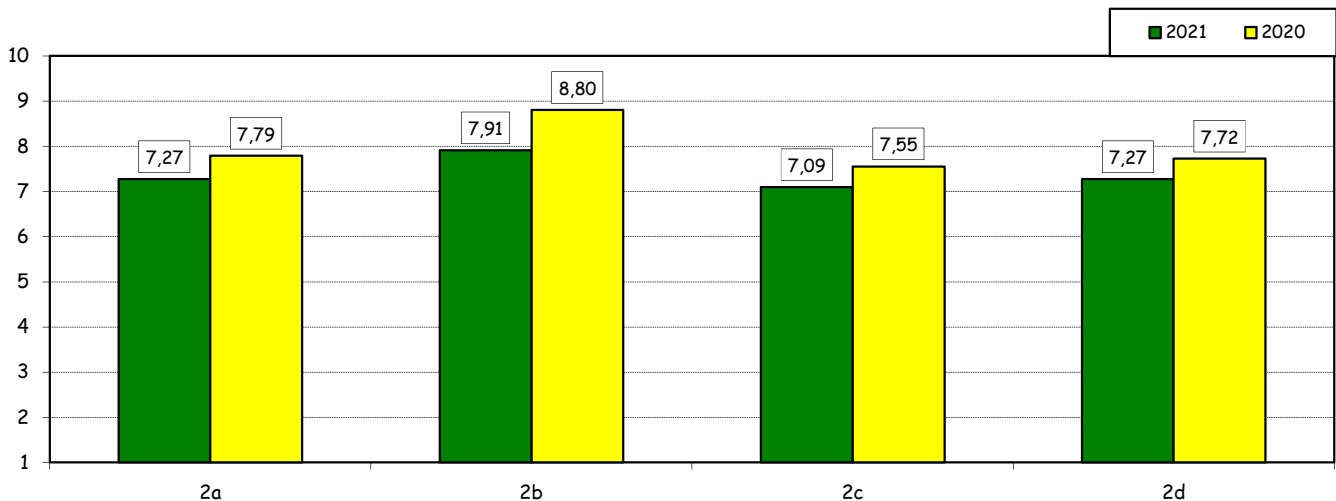


How would you evaluate:

(only A or B answers to item no.1)

Item	Answers	Negative				Positive				Total		N.A.
		1-2		3-4-5		6-7-8		9-10		a.v.	%	a.v.
		a.v.	%	a.v.	%	a.v.	%	a.v.	%	a.v.	%	a.v.
2a) Quality and completeness of information provided through: "International Week," emails, brochures, International Relations Service web page		1	9,1	1	9,1	6	54,5	3	27,3	11	100,0	0
2b) The range and interest of programs offered.		0	0,0	1	9,1	6	54,5	4	36,4	11	100,0	0
2c) The convenience of the study abroad desk's opening hours.		1	9,1	1	9,1	6	54,5	3	27,3	11	100,0	0
2d) The support you received from Bocconi International Relations.		0	0,0	2	18,2	6	54,5	3	27,3	11	100,0	0

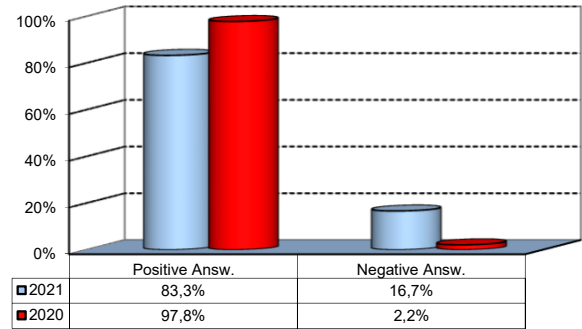
Over time comparison of average values



Experience Of Studying Abroad

3) Would you positively evaluate this experience?

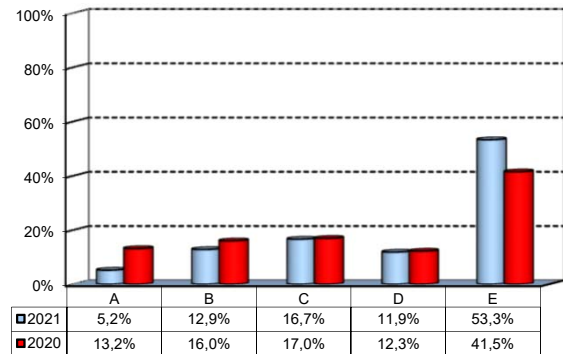
Answers	a.v.	%
A - Definitely YES	7	58,3%
B - More YES than NO	3	25,0%
C - More NO than YES	2	16,7%
D - Definitely NO	0	0,0%
Total	12	100%
NA	0	



(In case of answer "D" to item no.1)

4) Please indicate why you did not attend a period of study abroad (select all relevant reasons):

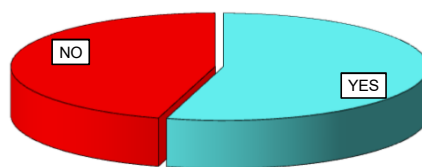
Answers	a.v.	%
A-Lack of interest in this kind of experience	11	5,2%
B-Absence of the requirements needed for participation in the program selected	27	12,9%
C-Rejection of your application	35	16,7%
D-Lack of time during the period of study	25	11,9%
E-Other (personal, family, organizational reasons, etc.)	112	53,3%
Total	210	100%
NA	2	



Internship Activities

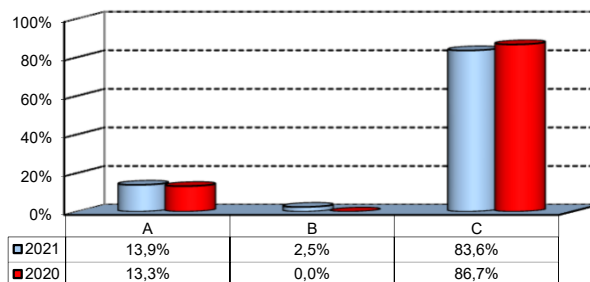
1) Did you attend an internship recognized by the Bachelor program?

	a.v.	2021	2020
YES	122	54,5%	48,3%
NO	102	45,5%	51,7%
Total	224	100%	100%
NA	1		



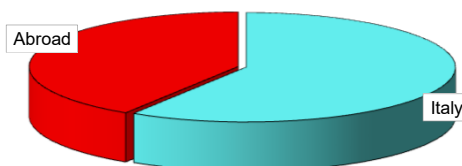
2) How did you find the internship?

	a.v.	%
A - Through the University's Placement Services*	17	13,9%
B - Through the faculty members of the degree program	3	2,5%
C - Through autonomous way then recognized by the degree program	102	83,6%
Total	122	100%
NA	0	



3) Where did you do the internship recognised by the Bachelor Program?

	a.v.	2021	2020
Italy	72	59,0%	51,0%
Abroad	50	41,0%	49,0%
Total	122	100%	100%
NA	0		

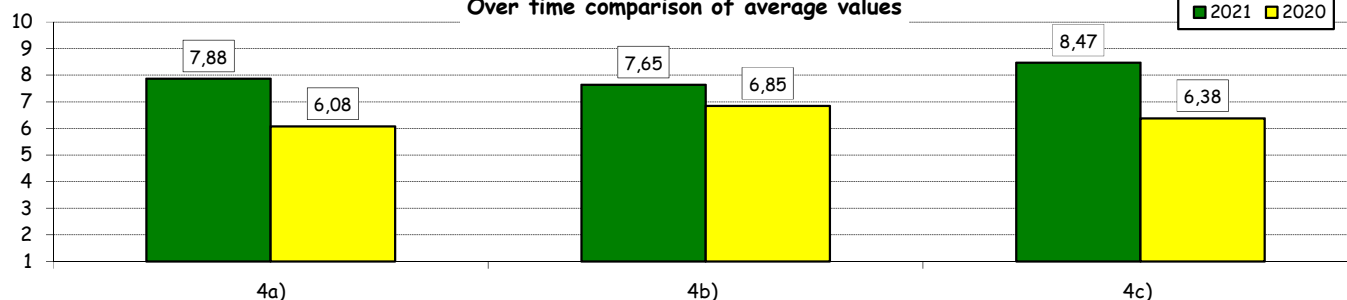


How would you evaluate:

(In case of answer "A" to item no.2)

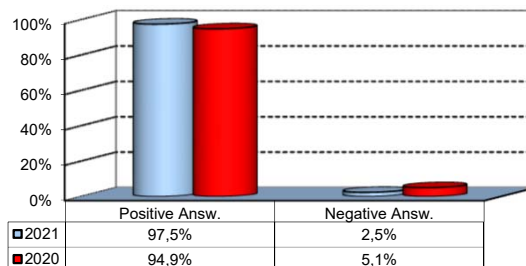
Item	Answers	Negative						Positive		Total	N.A.	
		1-2		3-4-5		6-7-8		9-10				
		a.v.	%	a.v.	%	a.v.	%	a.v.	%			
4a) The convenience of the internship front desk's opening hours.		0	0,0	2	12,5	6	37,5	8	50,0	16	100,0	1
4b) The number and variety of opportunities offered		2	11,8	0	0,0	7	41,2	8	47,1	17	100,0	0
4c) The support you received from the Internship Office.		0	0,0	1	5,9	6	35,3	10	58,8	17	100,0	0

Over time comparison of average values



5) Would you positively evaluate this experience?

	a.v.	%
A - Definitely YES	86	70,5%
B - More YES than NO	33	27,0%
C - More NO than YES	1	0,8%
D - Definitely NO	2	1,6%
Total	122	100%
NA	0	



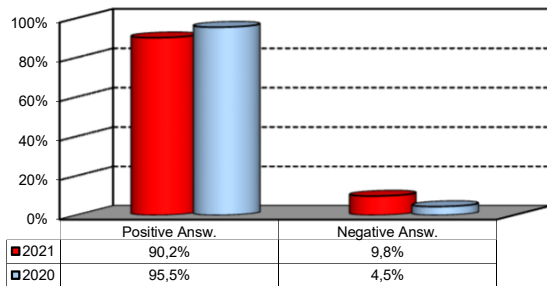
*JobGate, Internship Programs, Companies' meetings and presentations, Bocconi&Jobs, Placement Library's services, Curricular Internship Special, websites reported in the section 'Lavoro.net'

General satisfaction and short-term plans

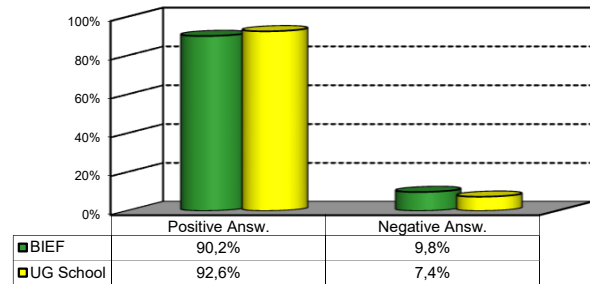
1) Are you satisfied overall with the study program you attended?

Answers	Italian School career		Int.nal School Career		Total	
	a.v.	%	a.v.	%	a.v.	%
A - Definitely YES	54	45,4%	30	28,6%	84	37,5%
B - More YES than NO	57	47,9%	61	58,1%	118	52,7%
C - More NO than YES	6	5,0%	12	11,4%	18	8,0%
D - Definitely NO	2	1,7%	2	1,9%	4	1,8%
Total	119	100%	105	100%	224	100%
NA	0		1		1	

Over time comparison



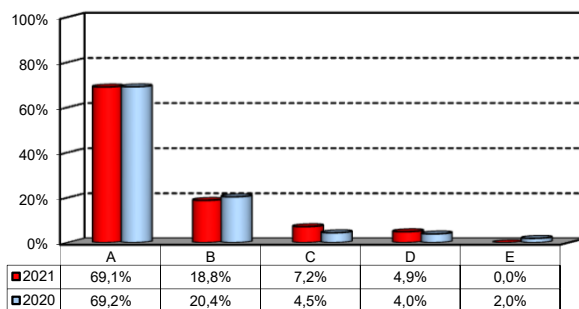
Comparison with the overall School data



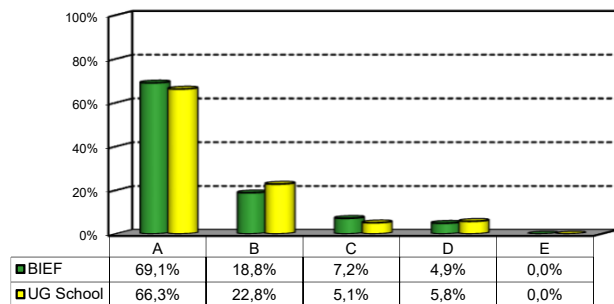
2a) If you could go back in time, would you enroll in the University again?

Answers	Italian School career		Int.nal School Career		Total	
	a.v.	%	a.v.	%	a.v.	%
A - YES, in the same Bachelor Program at this University	85	72,0%	69	65,7%	154	69,1%
B - YES, in another Program at this University	24	20,3%	18	17,1%	42	18,8%
C - YES, in the same Program but at another University	7	5,9%	9	8,6%	16	7,2%
D - YES, in another Program at another University	2	1,7%	9	8,6%	11	4,9%
E - NO, I would not enrol in university anymore	0	0,0%	0	0,0%	0	0,0%
Total	118	100%	105	100%	223	100%
NA	1		1		2	

Over time comparison



Comparison with the overall School data



General satisfaction and short-term plans

(In case of answer "B", "C", "D" or "E" to item no.2a)

2b) Why would you make a different choice?

Answers	Italian School career		Int.nal School Career		Total		2020 %
	v.a.	%	v.a.	%	2021 v.a.	%	
A - My interest has changed during this time / I discovered that I have different attitudes	18	58,1%	15	46,9%	33	52,4%	30,0%
B - The Bachelor program did not mirror my expectations	5	16,1%	9	28,1%	14	22,2%	15,0%
C- I have not been admitted to the Bachelor Program selected as first-choice.	1	3,2%	1	3,1%	2	3,2%	5,0%
D- The campus and its facilities and services were not up to my expectations	4	12,9%	4	12,5%	8	12,7%	25,0%
E-I would have preferred to attend the same Bachelor Program but taught in English.	0	0,0%	0	0,0%	0	0,0%	0,0%
F - Other reasons	3	9,7%	3	9,4%	6	9,5%	25,0%
Total	31	100%	32	100%	63	100%	100%
NA	2		4		6		

F- Other reasons:

- lack of recognition of bocconi outside of italy - how is it that students in the UK with any grade above 70% receive first class honours but here only 110/110 is honours? - it is not known to UK universities how much harder bocconi is than their unis
BAI non esisteva quando mi sono iscritto, sotto metto bemacs perche' bai non c'e' tra le scelte
I would have chosen the major in finance instead of the major in economics for career motivations.
I would have preferred BIEM instead of BIEF because of lighter workload, so I could focus more time and efforts on extracurriculars.
None
The theoretical approach that Bocconi uses when teaching its material is incompatible with my educational goals. The single course where I learned the most (IME with Prof. Sergejev) was the one that was the most applied and had projects and group work.
Trovo che il BEMACS sia un corso molto interessante e adatto alla modernizzazione del mondo dei servizi accelerata dalla pandemia. Era stata la mia seconda scelta dopo BIEF, oggi invertirei i due corsi.

3) In the near future do you intend to:

	Italian School career		Int.nal School Career		Total		2020 %
	a.v.	%	a.v.	%	2021 a.v.	%	
A- To go on with university studies at Bocconi (Master of Science, one-year Master of Science)	62	52,1%	18	17,5%	80	36,0%	38,2%
B-To go on with university studies at another Italian University	3	2,5%	2	1,9%	5	2,3%	2,1%
C- To go on with university studies abroad	40	33,6%	46	44,7%	86	38,7%	34,0%
D - To immediately look for a job	4	3,4%	16	15,5%	20	9,0%	11,5%
E - To accept a job proposal received	7	5,9%	15	14,6%	22	9,9%	11,0%
F - To continue to do the job started during this degree program	3	2,5%	6	5,8%	9	4,1%	3,1%
Total	119	100%	103	100%	222	100%	100%
NA	0		3		3		

General satisfaction and short-term plans

4) If you intend to continue your university studies at another University (in Italy or abroad), what are the reasons for your choice? (multiple answers admitted)

	Italian School career		Int.nal School Career		Total		2020 %
	a.v.	%	a.v.	%	a.v.	2021 %	
A - I would like to attend a more prestigious university	20	26,0%	13	16,7%	33	21,3%	12,4%
B - I would like to build a strong international curriculum	36	46,8%	35	44,9%	71	45,8%	41,4%
C- I can not bear the cost of studies (tuition fees and cost of living)	1	1,3%	3	3,8%	4	2,6%	6,9%
D - I can not bear the cost of studies (tuition fees and cost of living)	3	3,9%	5	6,4%	8	5,2%	4,8%
E- The administrative services are not sufficiently efficient	3	3,9%	8	10,3%	11	7,1%	6,9%
F - I think that the contents of Bocconi's MSc programs do not differ much from those of undergraduate programs	6	7,8%	6	7,7%	12	7,7%	12,4%
G - Other reasons	8	10,4%	8	10,3%	16	10,3%	15,2%
Total	77	100%	78	100%	155	100%	100%
NA	0		0		0		

G - Other reasons:

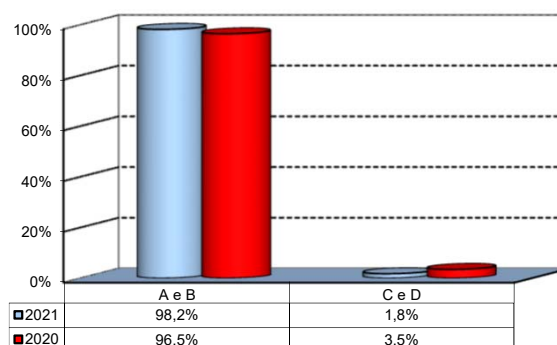
- Most of the professors have pretty bad English language skills. - The grading system is awfully planned. - Workload does not correspond to the number of credits given. - Recognition of master's degree obtained in Italy is not so great. - Teaching qu
Bocconi MSc's selection processes rely too much on students' GPA and not on other relevant experiences. Therefore, I couldn't achieve the score needed to get into the program I like
Curriculum of the MSc in Finance a lot too rigid and quantitative compared to other finance programs in Europe at top universities - Not entirely satisfied with the Bachelor's program
Dissatisfied with my undergraduate experience
Ho trovato un corso che rappresenta bene i miei nuovi interessi
I believe that Bocconi is mainly oriented towards academic and that this approach does not allow for the development of other important skills necessary in the job market. The attention that the university poses on grades as opposed to other relevant aspects, such as internships and external projects, is exaggerated and completely unnecessary. I would not have been accepted at IM at Bocconi with my average, but somehow I managed to get into all the universities I have applied (most notably LBS and INSEAD). this led me to think that perhaps I would better fit in an university which values more the person itself and its potential rather than just its grades. The teaching method is completely un - interactive, with a very low hands - on approach of the subjects. The career center needs a lot of improvements as it does not support a student in the different application stages (such as mock interviews). I believe that, compared to the other top European universities, Bocconi lags behind.
I found an interesting course in another university and I opted for it, also due to the fact that I wanted to experience a new environment, I have had enough of Bocconi's attitude and want to experience a different approach
I would have stayed in Bocconi if I could get in the Master in Finance. I do believe that the selection process has many fallacies, because a university that judges you base only on your grades and not on your internships, your extracurricular activities, or your potential is a university which will only teach people to learn to study and will not give to the world the best players 360 degrees. Moreover, I come from a Finance course and I find absolutely unfair that somebody who studied Political sciences in its bachelor and has no idea of what is finance (because the university does not assess if the student is really interested in the subject or at least knows what he is going to study) can steal a place to somebody which is passionate about finance and does it out of its heart. The selection method is very antique, and no international university that wants to compete with the best ones can select people based on a number and not on a person.
Il corso di studio con cui intendo proseguire la mia carriera universitaria non e' offerto con le stesse modalita' presso l'Universita' Bocconi. La mia media accademica bassa non mi permette di accedere ad un corso magistrale di un mio interesse.
My GPA is not high enough to get in to the master program I am interested in.

My interests are not met by the programs offered by Bocconi
Non e' presente un master in finanza sostenibile alla bocconi
Once again, the overly theoretical structure of Bocconi courses is incompatible with the way I learn. Moreover, given that Bocconi is yet to establish its strong reputation in the US where I intend to live and work (given that I am American), I need to pursue a US degree to find a job as European employers do not sponsor visas for non-EU citizens. Finally, the masters program abroad to which I was admitted is the world's best program at the institution that has revolutionized modern finance (MIT)
Staying at Bocconi to complete my Msc after having completed my BA here does not make much sense if one wishes to work outside of Italy. Other universities offer a different experience, broader network, etc.
The master's selection process is only based on average and does not take into consideration any extra-curricular activities (stage, associations...) or standardized tests like the <i>GMAT</i>

Infrastructure: Classrooms, Library And Facilities

1) What is your opinion about the classrooms where lessons and other teaching activities have been held?*

Answers	a.v.	%
A - Always or nearly always adequate	144	64,9%
B - Often adequate	73	32,9%
C - Rarely adequate	4	1,8%
D - Never adequate	0	0,0%
E - I did not use them	1	0,5%
Total	222	100%
NA	3	

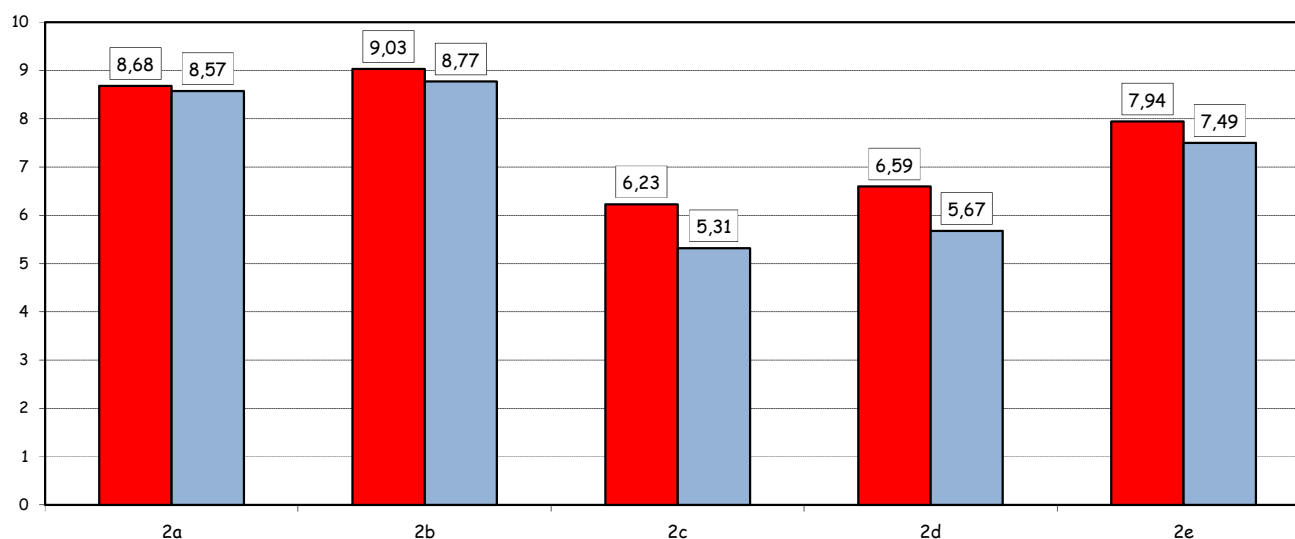


2) How would you evaluate:

Item	Answers	Negative				Positive				Total		N.R.
		1-2		3-4-5		6-7-8		9-10		a.v.	%	
		a.v.	%	a.v.	%	a.v.	%	a.v.	%			
a) The adequacy of the audio and multimedia systems (e.g. instructor's computer, projectors, video players) installed in the classrooms		0	0,0	6	2,7	77	34,7	139	62,6	222	100,0	3
b) The cleanliness of classrooms and of other common areas on campus (corridors, halls, study rooms)		1	0,5	2	0,9	53	23,9	166	74,8	222	100,0	3
c) The adequacy of the amount of areas/seats reserved to individual study in the University Library		30	14,4	55	26,4	64	30,8	59	28,4	208	100,0	17
d) The adequacy of the amount of areas/seats reserved to individual study in other buildings on campus		23	10,4	47	21,2	92	41,4	60	27,0	222	100,0	3
e) The clarity and adequacy of the signage system on campus		1	0,5	23	10,5	99	45,0	97	44,1	220	100,0	5

Over time comparison of average values

■ 2021 ■ 2020

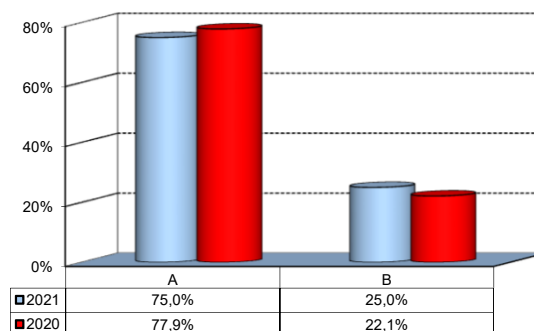


(*): the percentage shown on the graphs is calculated by excluding the responses of those who declare that they have not used the service.

Infrastructure: Classrooms, Library And Facilities

3) What is your overall opinion on the PC Labs and IT facilities provided by the University?*

Answers	a.v.	%
A- Adequate in number	111	50,0%
B- Inadequate in number	37	16,7%
C- Never used	74	33,3%
Total	222	100%
NA	3	

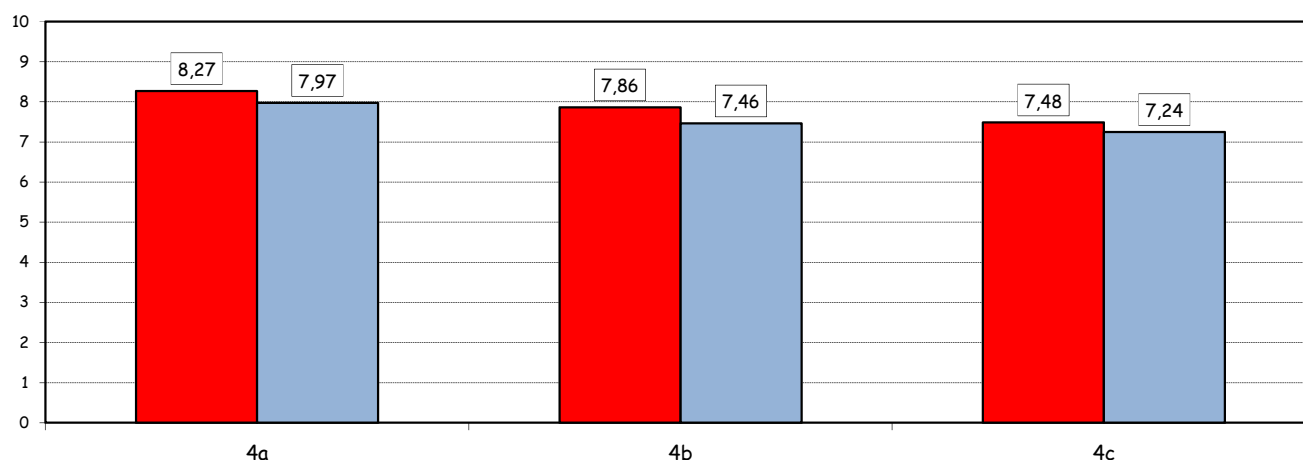


4) How would you evaluate:

Item	Answers	Negative				Positive				Total		NA
		1-2		3-4-5		6-7-8		9-10		a.v.	%	
		a.v.	%	a.v.	%	a.v.	%	a.v.	%			
a) The availability of technical staff supporting students (Tutors) in PC Labs [^]		1	0,7	9	6,1	63	42,9	74	50,3	147	100,0	1
b) The convenience of the PC Labs' opening hours [^]		4	2,7	12	8,2	65	44,5	65	44,5	146	100,0	2
c) The level of accessibility and usability of the University's IT services (Internet access points, Punto Blu, Virtual Punto Blu, wireless connection)		10	4,6	26	12,0	108	49,8	73	33,6	217	100,0	8

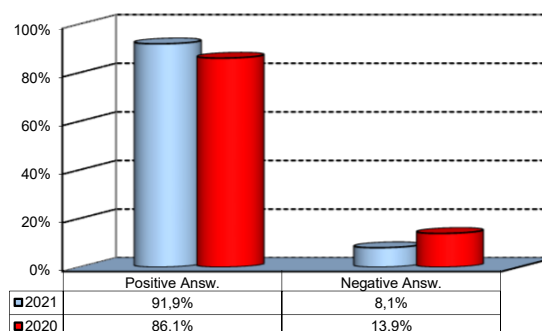
Over time comparison of average values

■ 2021 ■ 2020



5) What is your overall opinion on the Library's services, such as support for individual study?*

Answers	a.v.	%
A - Very Positive	64	28,8%
B - Quite positive	107	48,2%
C - Quite negative	13	5,9%
D - Very Negative	2	0,9%
E - Never used	36	16,2%
Total	222	100%
NA	3	



([^]): Only in case of answer "A" or "B" to item no.3

(*): the percentage shown on the graphs is calculated by excluding the responses of those who declare that they have not used the service.