

**EVALUATION OF
THE DEGREE PROGRAM AND THE
UNIVERSITY EXPERIENCE**

**BACHELOR IN
WORLD BACHELOR IN BUSINESS
Graduation year 2021**

N° QUESTIONNAIRES PROCESSED: 20

N° OF GRADUATE STUDENTS: 40

RESPONSE RATE: 50,0%



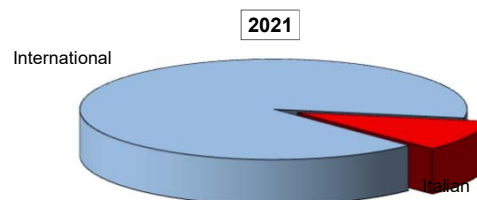
EVALUATION OF STUDENT EXPERIENCE

World Bachelor in Business

General information

School Career

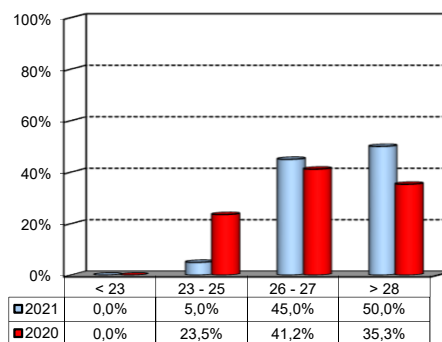
Answers	a.v.	%	%
		2021	2020
Italian	2	10,0%	0,0%
International	18	90,0%	100,0%
Total	20	100%	100%
NA	0		



Average mark of the exams passed:

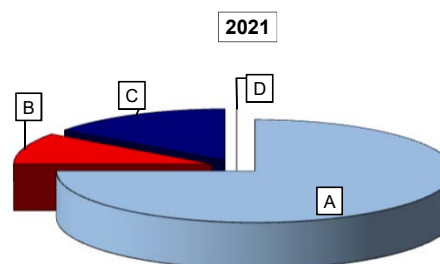
(approximate average expressed in 30/30)

Answers	a.v.	%
< 23	0	0,0%
23 - 25	1	5,0%
26 - 27	9	45,0%
> 28	10	50,0%
Total	20	100%
NA	0	



How many of the courses included in your curriculum did you attend regularly?

Answers	a.v.	%	%
		2021	2020
A - More than 75%	15	75,0%	23,5%
B - Between 50 and 75%	2	10,0%	23,5%
C - Between 25 and 50%	3	15,0%	5,9%
D - Less than 25%	0	0,0%	47,1%
Total	20	100%	100%
NA	0		

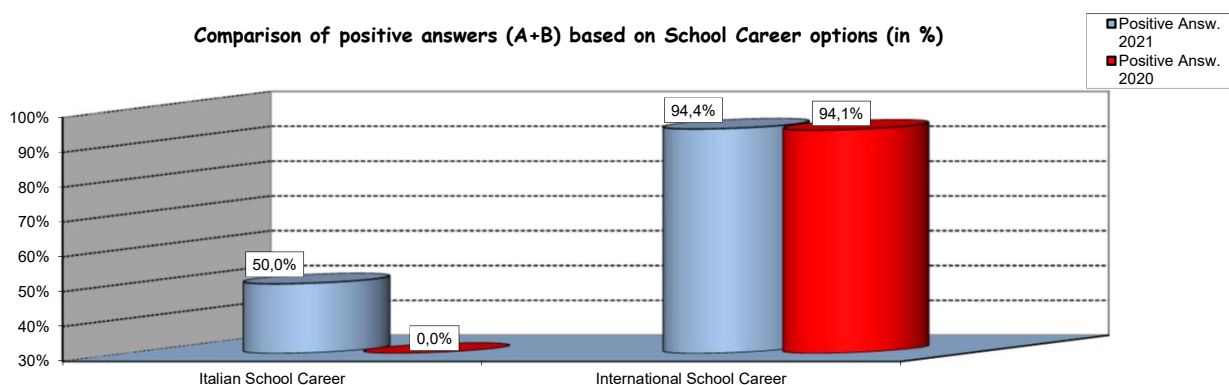


Study experience

1) Was the knowledge acquired during secondary school adequate to undertake your Bachelor program?

Answers	Italian School Career		International School Career		Total	
	a.v.	%	a.v.	%	a.v.	%
A - Definitely YES	1	50,0%	11	61,1%	12	60,0%
B - More YES than NO	0	0,0%	6	33,3%	6	30,0%
C - More NO than YES	1	50,0%	1	5,6%	2	10,0%
D - Definitely NO	0	0,0%	0	0,0%	0	0,0%
Total	2	100%	18	100%	20	100%
NA	0		0		0	

Comparison of positive answers (A+B) based on School Career options (in %)



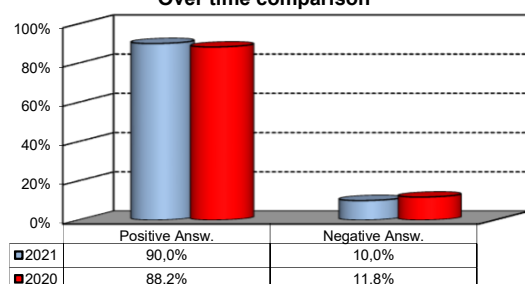
2) if you answered "More NO than YES" or "Definitely NO", indicate the subject or the subjects for which your previous knowledge revealed to be insufficient:

	a.v.	%
EUROPEAN ECONOMIC POLICY	2	33,3%
FINANCE (MODULE II) - CORPORATE FINANCE	1	16,7%
CHINESE COMMUNICATION	1	16,7%
FINANCE (MODULE I) - FINANCIAL MARKETS AND INSTITUTIONS	1	16,7%
FINANCE	1	16,7%
Total	6	100%

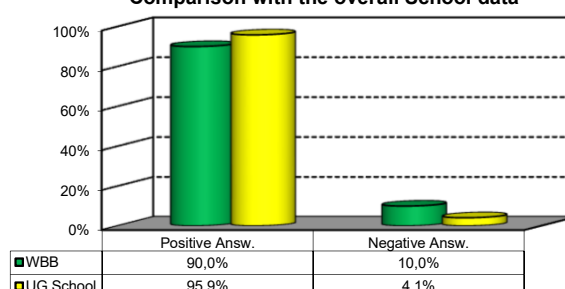
3) On the whole, do you appreciate the qualifications you acquired at the end of the Bachelor program at Bocconi?

Aswers	Italian school Career		Int.nal School Career		Total	
	v.a.	%	v.a.	%	v.a.	%
A - Definitely YES	0	0,0%	6	33,3%	6	30,0%
B - More YES than NO	1	50,0%	11	61,1%	12	60,0%
C - More NO than YES	1	50,0%	1	5,6%	2	10,0%
D - Definitely NO	0	0,0%	0	0,0%	0	0,0%
Total	2	100%	18	100%	20	100%
NA	0		0		0	

Over time comparison



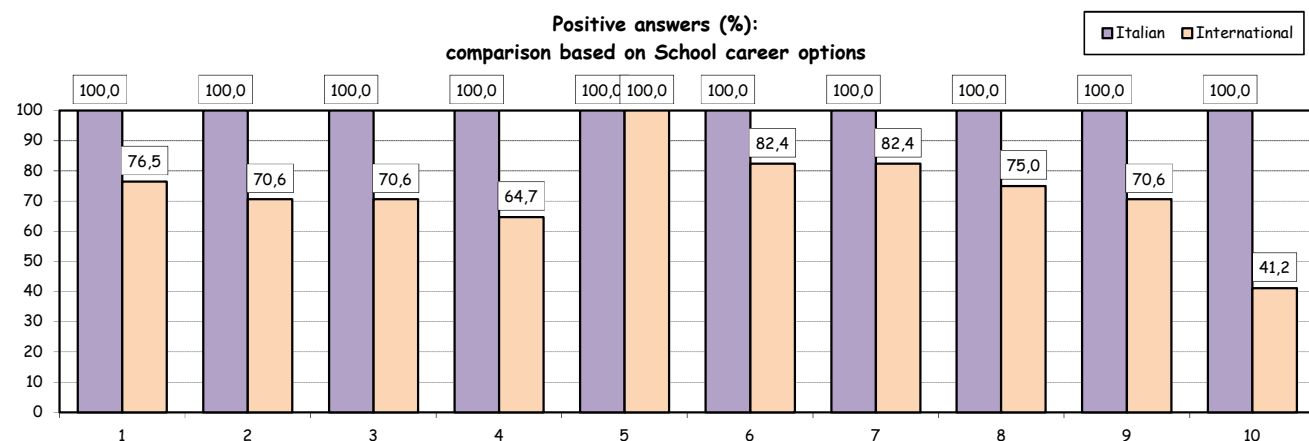
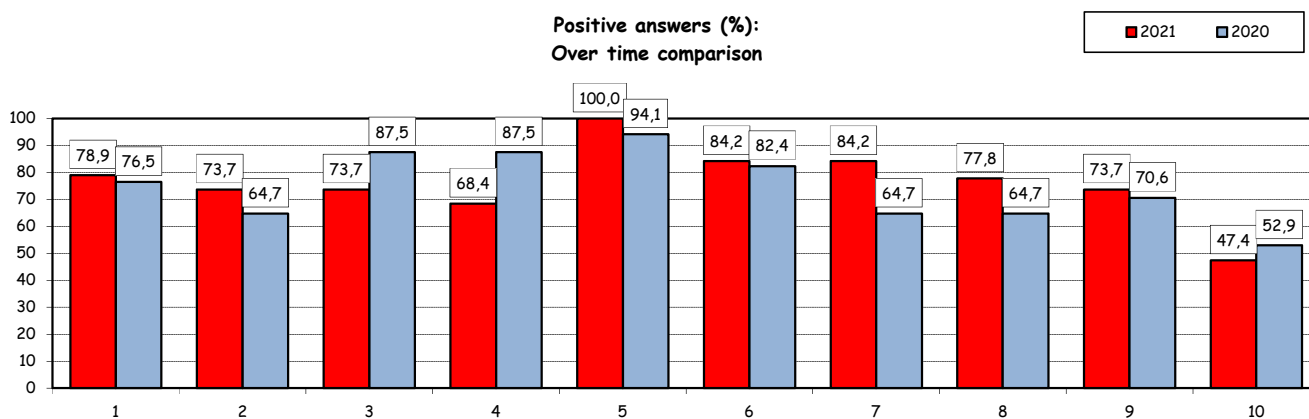
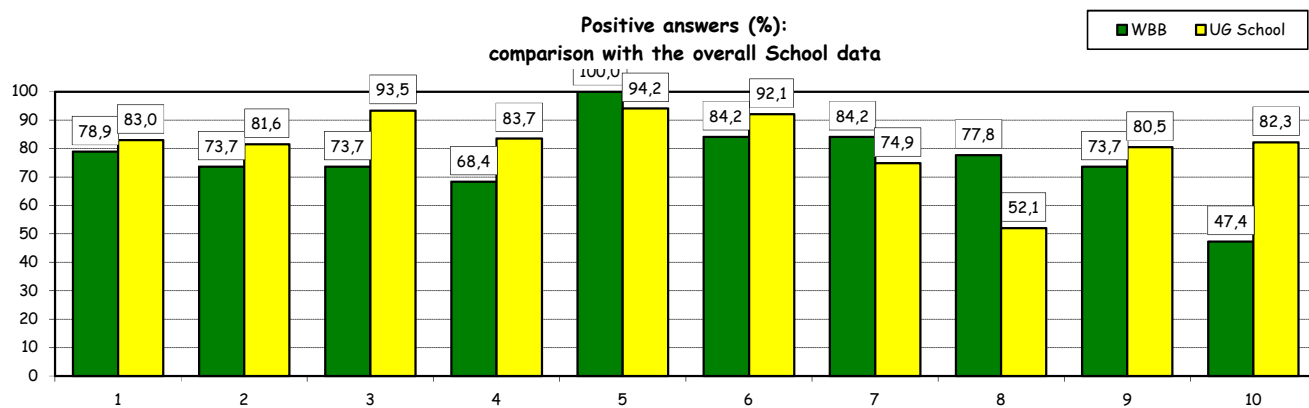
Comparison with the overall School data



Study experience

4) Do you think that your course of study at Bocconi has contributed to the development of the following skills?

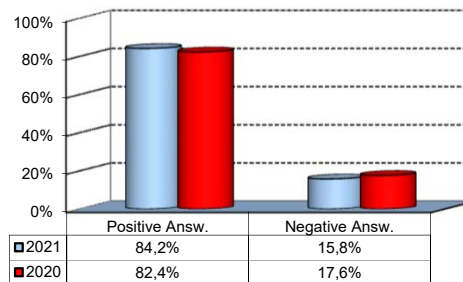
Soft Skill	Item	Definitely YES		More YES than NO		More NO than YES		Definitely NO		Total		n.a.
		a.v.	%	a.v.	%	a.v.	%	a.v.	%	a.v.	%	a.v.
1	Ability to work on a team	9	47,4	6	31,6	4	21,1	0	0,0	19	100,0	1
2	Interpersonal skills	9	47,4	5	26,3	5	26,3	0	0,0	19	100,0	1
3	Organizational skills	6	31,6	8	42,1	5	26,3	0	0,0	19	100,0	1
4	Critical thinking skills	8	42,1	5	26,3	6	31,6	0	0,0	19	100,0	1
5	Ability to analyze and select information	10	52,6	9	47,4	0	0,0	0	0,0	19	100,0	1
6	Problem-solving ability	7	36,8	9	47,4	3	15,8	0	0,0	19	100,0	1
7	Written communication skills	8	42,1	8	42,1	3	15,8	0	0,0	19	100,0	1
8	Verbal communication skills	7	38,9	7	38,9	4	22,2	0	0,0	18	100,0	2
9	Ability to cope with stress	9	47,4	5	26,3	5	26,3	0	0,0	19	100,0	1
10	Computer Skills	5	26,3	4	21,1	7	36,8	3	15,8	19	100,0	1



Study experience

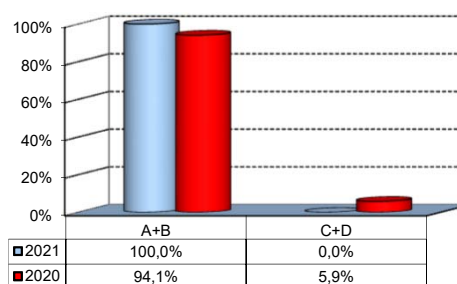
5) Do you think that the courses in your curriculum were adequately coordinated with each other?

	a.v.	%
A - Definitely YES	3	15,8%
B - More YES than NO	13	68,4%
C - More NO than YES	3	15,8%
D - Definitely NO	0	0,0%
Total	19	100%
NA	1	



6a) Do you think that the overall study load was compatible with the length of the program?

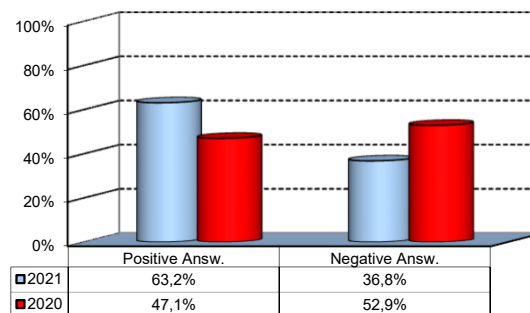
	a.v.	%
A - Definitely YES	6	31,6%
B - More YES than NO	13	68,4%
C - More NO than YES	0	0,0%
D - Definitely NO	0	0,0%
Total	19	100%
NA	1	



Final Report

1) Do you think that the supervision and assistance for preparing for your final report (internship report, final paper or other) were adequate?

	a.v.	%
A - Definitely YES	5	26,3%
B - More YES than NO	7	36,8%
C - More NO than YES	6	31,6%
D - Definitely NO	1	5,3%
E - Supervision was not expected	0	0,0%
Total	19	100%
NA	1	

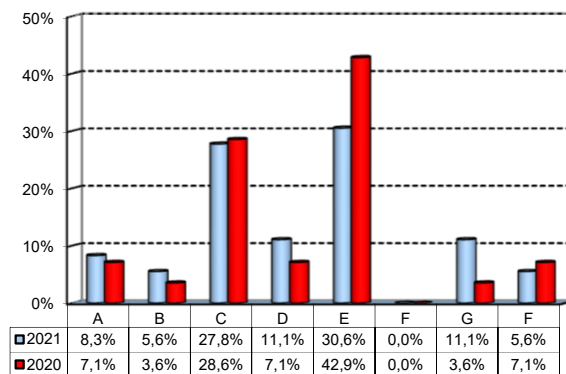


Extracurricular Activities

1) Which of the following extracurricular activities did you attend during the Bachelor Program?

(multiple answers admitted)

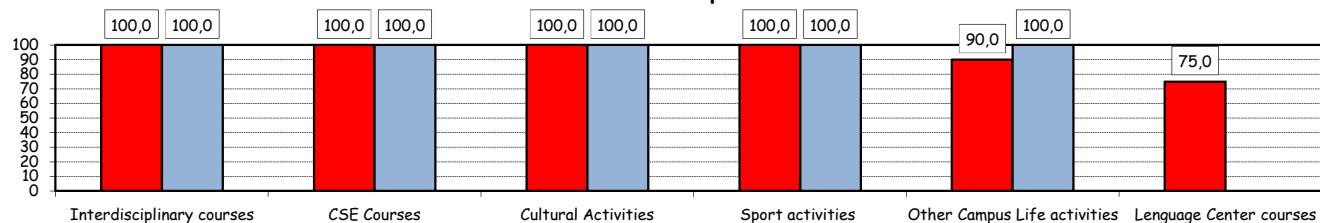
	a.v.	%
A - Interdisciplinary courses ("Sapere a tutto campo")	3	8,3%
B - Counseling and Self-Empowerment courses (CSE)	2	5,6%
C - Cultural Activities (visit museums, concerts, theatre and cinema, various issues)	10	27,8%
D - Sport activities	4	11,1%
E - Other Campus Life activities	11	30,6%
F - IT Education Center courses (ITEC)	0	0,0%
G - Language Center courses	4	11,1%
H - None	2	5,6%
Total	36	100%
NA	0	



2) Do you think that the activities you took part in contributed to your cultural/educational enrichment?

	Definitely YES		More YES than NO		More NO than YES		Definitely NO		Total		NA
	a.v.	%	a.v.	%	a.v.	%	a.v.	%	a.v.	%	a.v.
A - Interdisciplinary courses	2	66,7	1	33,3	0	0,0	0	0,0	3	100,0	0
B - CSE courses	1	50,0	1	50,0	0	0,0	0	0,0	2	100,0	0
C - Cultural Activities	6	66,7	3	33,3	0	0,0	0	0,0	9	100,0	1
D - Sport activities	3	75,0	1	25,0	0	0,0	0	0,0	4	100,0	0
E - Other Campus Life activities	4	40,0	5	50,0	1	10,0	0	0,0	10	100,0	1
G - Language Center courses	1	25,0	2	50,0	1	25,0	0	0,0	4	100,0	0

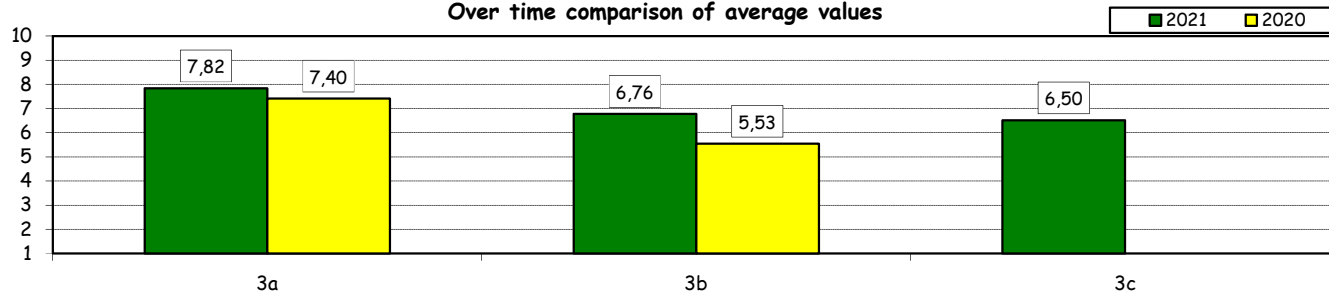
Positive answers (%):
Over time comparison



How would you evaluate:

Item	Answers	Negative				Positive				Total		NA
		1-2		3-4-5		6-7-8		9-10		a.v.	%	
		a.v.	%	a.v.	%	a.v.	%	a.v.	%			
3a) The range and interest of programmes offered		0	0,0	1	5,9	11	64,7	5	29,4	17	100,0	1
3b) The support you received from the Campus Life Office		0	0,0	5	29,4	9	52,9	3	17,6	17	100,0	1
3c) The support you received from Language Center		0	0,0	0	0,0	4	100,0	0	0,0	4	100,0	0

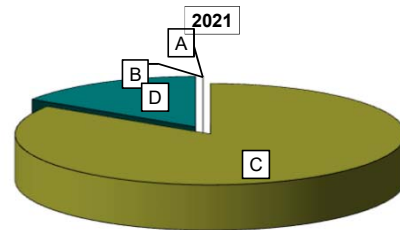
Over time comparison of average values



Experience Of Studying Abroad

1) Type of experience:

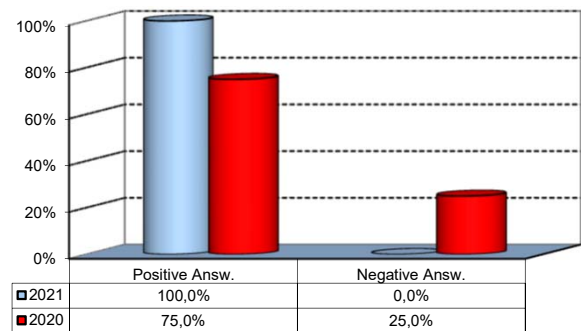
Answers	a. v.	%	
		2021	2020
A - Exchange	0	0,0%	5,9%
B - Double Degree	0	0,0%	41,2%
C - Free-Mover	16	84,2%	0,0%
D - None	3	15,8%	52,9%
Total	19	100%	100%
NA	1		



Experience Of Studying Abroad

3) Would you positively evaluate this experience?

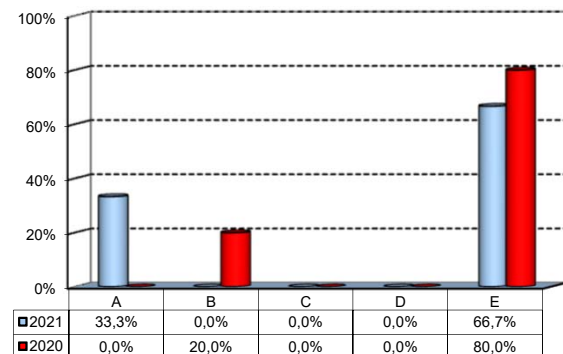
Answers	a. v.	%
A - Definitely YES	8	50,0%
B - More YES than NO	8	50,0%
C - More NO than YES	0	0,0%
D - Definitely NO	0	0,0%
Total	16	100%
NA	0	



(In case of answer "D" to item no.1)

4) Please indicate why you did not attend a period of study abroad (select all relevant reasons):

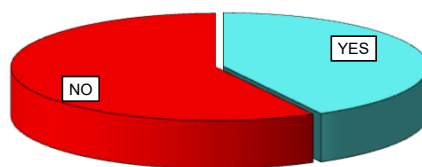
Answers	a. v.	%
A-Lack of interest in this kind of experience	1	33,3%
B-Absence of the requirements needed for participation in the program selected	0	0,0%
C-Rejection of your application	0	0,0%
D-Lack of time during the period of study	0	0,0%
E-Other (personal, family, organizational reasons, etc.)	2	66,7%
Total	3	100%
NA	0	



Internship Activities

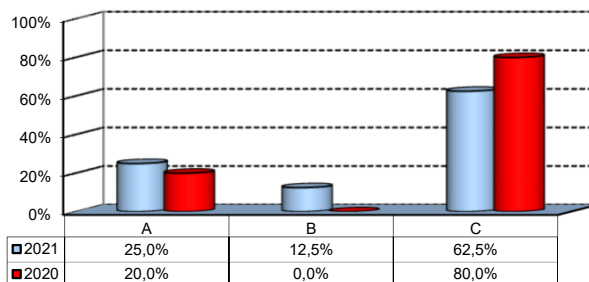
1) Did you attend an internship recognized by the Bachelor program?

	a.v.	2021	2020
YES	8	42,1%	29,4%
NO	11	57,9%	70,6%
Total	19	100%	100%
NA	1		



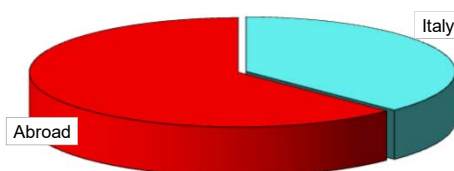
2) How did you find the internship?

	a.v.	%
A - Through the University's Placement Services*	2	25,0%
B - Through the faculty members of the degree program	1	12,5%
C - Through autonomous way then recognized by the degree program	5	62,5%
Total	8	100%
NA	0	



3) Where did you do the internship recognised by the Bachelor Program?

	a.v.	2021	2020
Italy	3	37,5%	0,0%
Abroad	5	62,5%	100,0%
Total	8	100%	100%
NA	0		

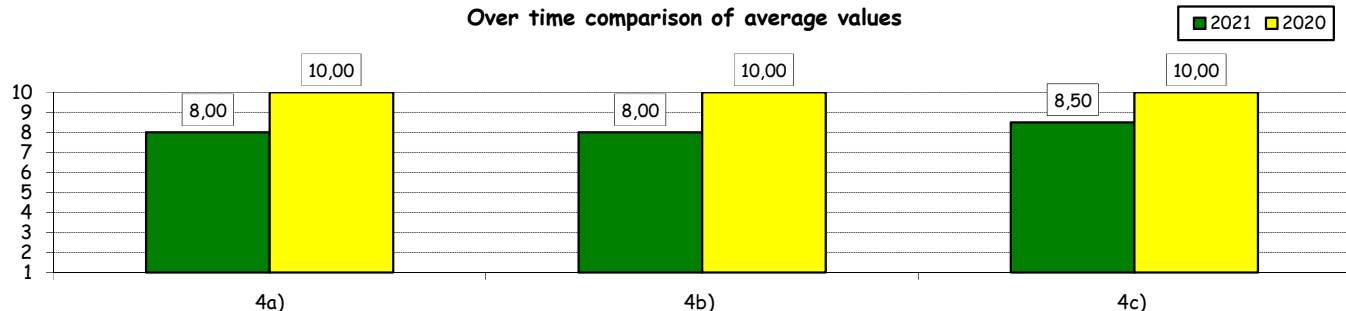


How would you evaluate:

(In case of answer "A" to item no.2)

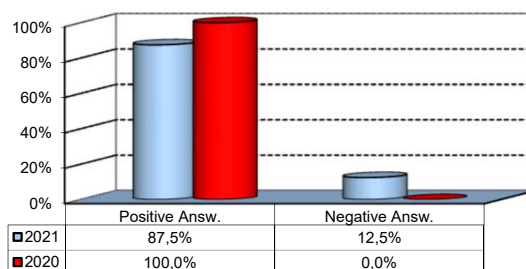
Item	Answers	Negative				Positive				Total	N.A.	
		1-2		3-4-5		6-7-8		9-10				
		a.v.	%	a.v.	%	a.v.	%	a.v.	%			
4a) The convenience of the internship front desk's opening hours.		0	0,0	0	0,0	1	50,0	1	50,0	2	100,0	0
4b) The number and variety of opportunities offered		0	0,0	0	0,0	1	50,0	1	50,0	2	100,0	0
4c) The support you received from the Internship Office.		0	0,0	0	0,0	1	50,0	1	50,0	2	100,0	0

Over time comparison of average values



5) Would you positively evaluate this experience?

	a.v.	%
A - Definitely YES	2	25,0%
B - More YES than NO	5	62,5%
C - More NO than YES	1	12,5%
D - Definitely NO	0	0,0%
Total	8	100%
NA	0	



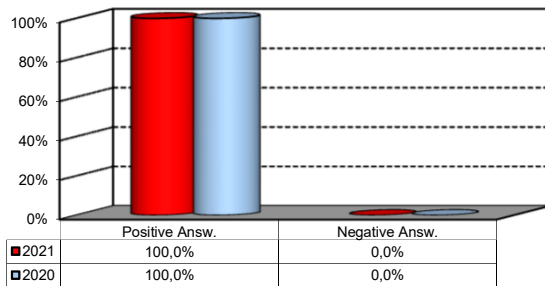
*JobGate, Internship Programs, Companies' meetings and presentations, Bocconi&Jobs, Placement Library's services, Curricular Internship Special, websites reported in the section 'Lavoro.net'

General satisfaction and short-term plans

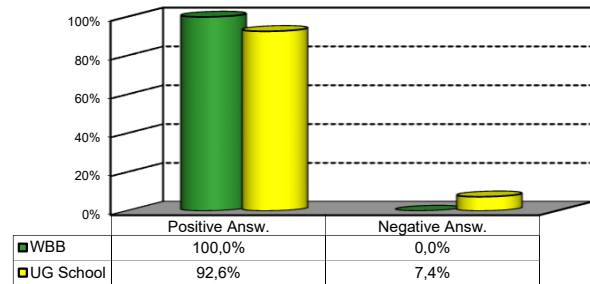
1) Are you satisfied overall with the study program you attended?

Answers	Italian School career		Int.nal School Career		Total	
	a.v.	%	a.v.	%	a.v.	%
A - Definitely YES	1	50,0%	9	52,9%	10	52,6%
B - More YES than NO	1	50,0%	8	47,1%	9	47,4%
C - More NO than YES	0	0,0%	0	0,0%	0	0,0%
D - Definitely NO	0	0,0%	0	0,0%	0	0,0%
Total	2	100%	17	100%	19	100%
NA	0		1		1	

Over time comparison



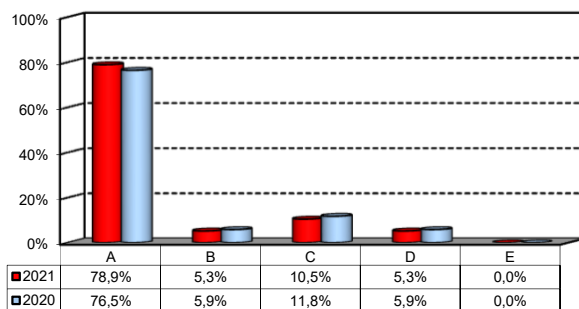
Comparison with the overall School data



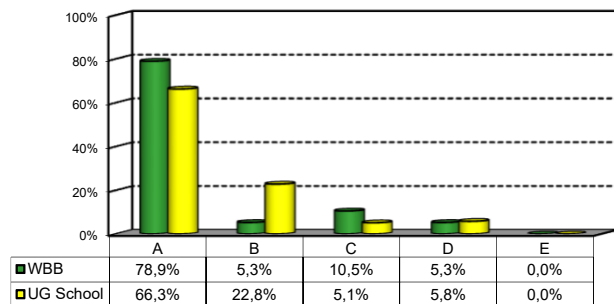
2a) If you could go back in time, would you enroll in the University again?

Answers	Italian School career		Int.nal School Career		Total	
	a.v.	%	a.v.	%	a.v.	%
A - YES, in the same Bachelor Program at this University	2	100,0%	13	76,5%	15	78,9%
B - YES, in another Program at this University	0	0,0%	1	5,9%	1	5,3%
C - YES, in the same Program but at another University	0	0,0%	2	11,8%	2	10,5%
D - YES, in another Program at another University	0	0,0%	1	5,9%	1	5,3%
E - NO, I would not enrol in university anymore	0	0,0%	0	0,0%	0	0,0%
Total	2	100%	17	100%	19	100%
NA	0		1		1	

Over time comparison



Comparison with the overall School data



General satisfaction and short-term plans

(In case of answer "B", "C", "D" or "E" to item no.2a)

2b) Why would you make a different choice?

Answers	Italian School career		Int.nal School Career		Total		2020 %
	v.a.	%	v.a.	%	2021 v.a.	2021 %	
A - My interest has changed during this time / I discovered that I have different attitudes	0	0,0%	3	75,0%	3	75,0%	33,3%
B - The Bachelor program did not mirror my expectations	0	0,0%	0	0,0%	0	0,0%	0,0%
C- I have not been admitted to the Bachelor Program selected as first-choice.	0	0,0%	0	0,0%	0	0,0%	0,0%
D- The campus and its facilities and services were not up to my expectations	0	0,0%	1	25,0%	1	25,0%	66,7%
E-I would have preferred to attend the same Bachelor Program but taught in English.	0	0,0%	0	0,0%	0	0,0%	0,0%
F - Other reasons	0	0,0%	0	0,0%	0	0,0%	0,0%
Total	0	0%	4	100%	4	100%	100%
NA	0		0		0		

General satisfaction and short-term plans

3) In the near future do you intend to:

	Italian School career		Int.nal School Career		Total		2020 %
	a.v.	%	a.v.	%	2021 a.v.	2021 %	
A- To go on with university studies at Bocconi (Master of Science, one-year Master of Science)	0	0,0%	0	0,0%	0	0,0%	6,3%
B- To go on with university studies at another Italian University	0	0,0%	0	0,0%	0	0,0%	0,0%
C- To go on with university studies abroad	0	0,0%	2	11,8%	2	10,5%	18,8%
D - To immediately look for a job	0	0,0%	3	17,6%	3	15,8%	18,8%
E - To accept a job proposal received	1	50,0%	11	64,7%	12	63,2%	43,8%
F - To continue to do the job started during this degree program	1	50,0%	1	5,9%	2	10,5%	12,5%
Total	2	100%	17	100%	19	100%	100%
NA	0		1		1		

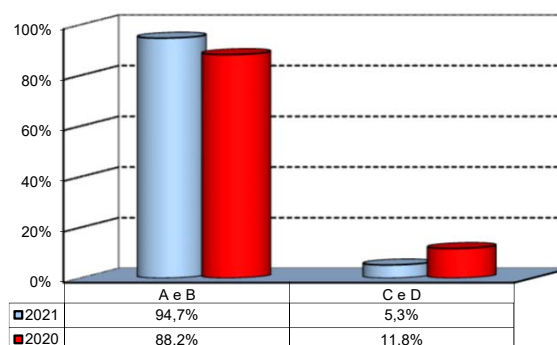
4) If you intend to continue your university studies at another University (in Italy or abroad), what are the reasons for your choice? (multiple answers admitted)

	Italian School career		Int.nal School Career		Total		2020 %
	a.v.	%	a.v.	%	2021 a.v.	2021 %	
A - I would like to attend a more prestigious university	0	#DIV/0!	0	0,0%	0	0,0%	12,5%
B - I would like to build a strong international curriculum	0	#DIV/0!	2	100,0%	2	100,0%	37,5%
C- I can not bear the cost of studies (tuition fees and cost of living)	0	#DIV/0!	0	0,0%	0	0,0%	0,0%
D - I can not bear the cost of studies (tuition fees and cost of living)	0	#DIV/0!	0	0,0%	0	0,0%	0,0%
E- The administrative services are not sufficiently efficient	0	#DIV/0!	0	0,0%	0	0,0%	12,5%
F - I think that the contents of Bocconi's MSc programs do not differ much from those of undergraduate programs	0	#DIV/0!	0	0,0%	0	0,0%	12,5%
G - Other reasons	0	#DIV/0!	0	0,0%	0	0,0%	25,0%
Total	0	#DIV/0!	2	100%	2	100%	100%
NA	0		0		0		

Infrastructure: Classrooms, Library And Facilities

1) What is your opinion about the classrooms where lessons and other teaching activities have been held?*

Answers	a.v.	%
A - Always or nearly always adequate	7	36,8%
B - Often adequate	11	57,9%
C - Rarely adequate	1	5,3%
D - Never adequate	0	0,0%
E - I did not use them	0	0,0%
Total	19	100%
NA	1	

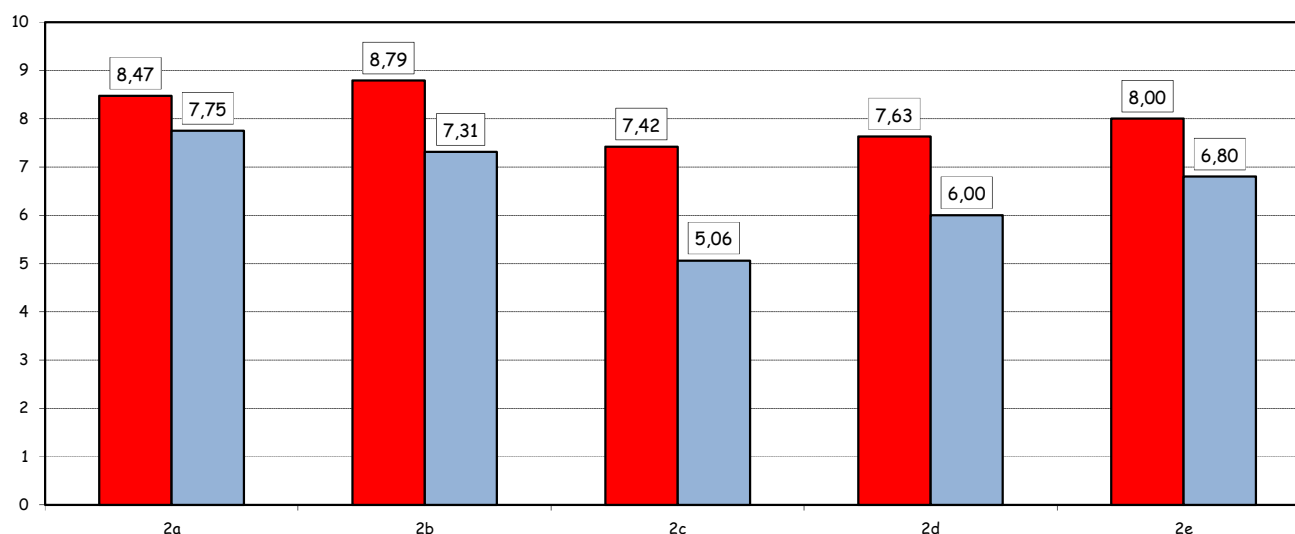


2) How would you evaluate:

Item	Answers	Negative				Positive				Total		N.R.
		1-2		3-4-5		6-7-8		9-10		a.v.	%	
		a.v.	%	a.v.	%	a.v.	%	a.v.	%			
a) The adequacy of the audio and multimedia systems (e.g. instructor's computer, projectors, video players) installed in the classrooms		0	0,0	0	0,0	10	52,6	9	47,4	19	100,0	1
b) The cleanliness of classrooms and of other common areas on campus (corridors, halls, study rooms)		0	0,0	1	5,3	5	26,3	13	68,4	19	100,0	1
c) The adequacy of the amount of areas/seats reserved to individual study in the University Library		1	5,3	2	10,5	9	47,4	7	36,8	19	100,0	1
d) The adequacy of the amount of areas/seats reserved to individual study in other buildings on campus		1	5,3	0	0,0	10	52,6	8	42,1	19	100,0	1
e) The clarity and adequacy of the signage system on campus		0	0,0	1	5,6	11	61,1	6	33,3	18	100,0	2

Over time comparison of average values

■ 2021 ■ 2020

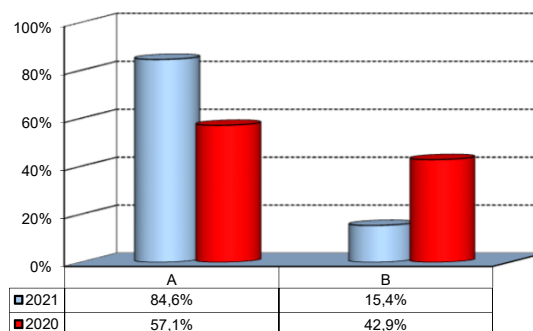


(*): the percentage shown on the graphs is calculated by excluding the responses of those who declare that they have not used the service.

Infrastructure: Classrooms, Library And Facilities

3) What is your overall opinion on the PC Labs and IT facilities provided by the University?*

Answers	a.v.	%
A- Adequate in number	11	57,9%
B- Inadequate in number	2	10,5%
C- Never used	6	31,6%
Total	19	100%
NA	1	

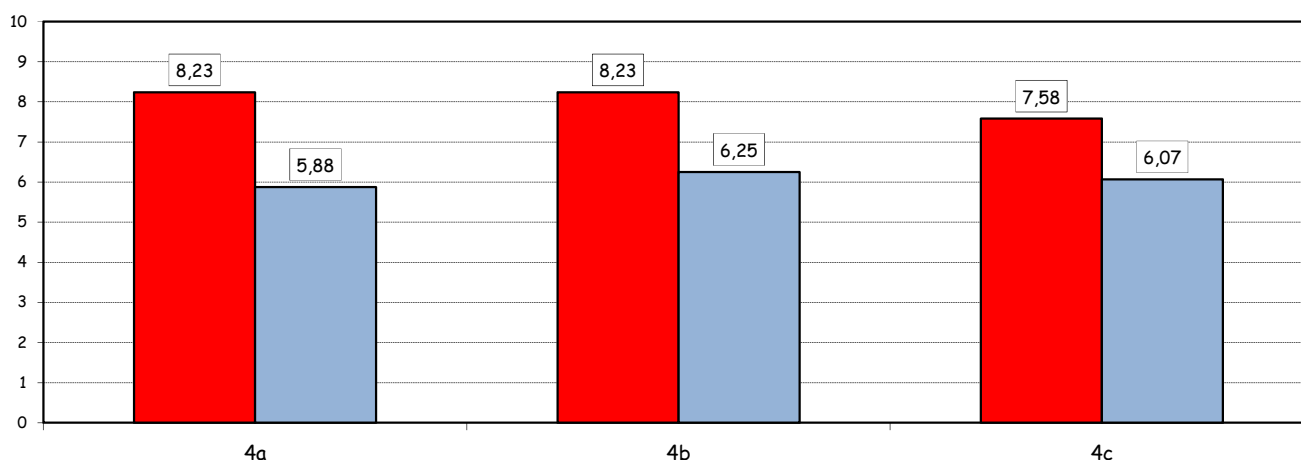


4) How would you evaluate:

Item	Answers	Negative				Positive				Total		NA
		1-2		3-4-5		6-7-8		9-10		a.v.	%	
		a.v.	%	a.v.	%	a.v.	%	a.v.	%			
a) The availability of technical staff supporting students (Tutors) in PC Labs [^]		0	0,0	2	15,4	5	38,5	6	46,2	13	100,0	0
b) The convenience of the PC Labs' opening hours [^]		0	0,0	1	7,7	6	46,2	6	46,2	13	100,0	0
c) The level of accessibility and usability of the University's IT services (Internet access points, Punto Blu, Virtual Punto Blu, wireless connection)		1	5,3	1	5,3	10	52,6	7	36,8	19	100,0	1

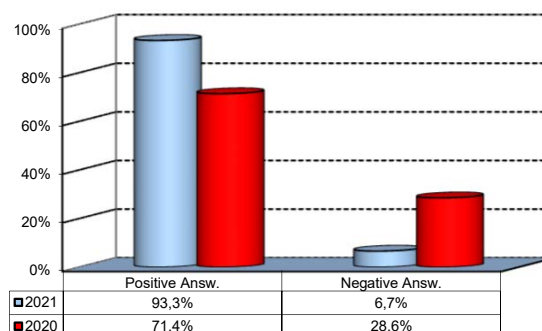
Over time comparison of average values

■ 2021 ■ 2020



5) What is your overall opinion on the Library's services, such as support for individual study?*

Answers	a.v.	%
A - Very Positive	5	26,3%
B - Quite positive	9	47,4%
C - Quite negative	1	5,3%
D - Very Negative	0	0,0%
E - Never used	4	21,1%
Total	19	100%
NA	1	



([^]): Only in case of answer "A" or "B" to item no.3

(*): the percentage shown on the graphs is calculated by excluding the responses of those who declare that they have not used the service.