

EVALUATION OF THE DEGREE PROGRAM AND THE UNIVERSITY EXPERIENCE

MASTER OF SCIENCE IN CYBER RISK STRATEGY AND GOVERNANCE a.y. 2020-2021

SURVEY PERIOD: JULY 2021 - JULY 2022

N° QUESTIONNAIRES PROCESSED: 29

N° OF GRADUATE STUDENTS: 34

RESPONSE RATE: 85,3%



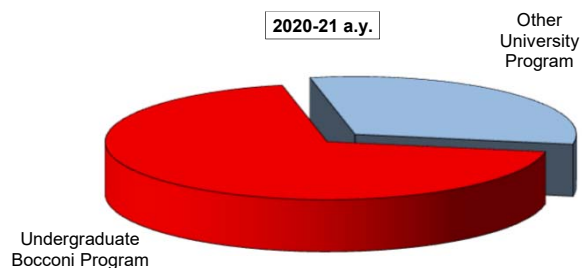
EVALUATION OF UNIVERSITY EXPERIENCE

Cyber Risk Strategy and Governance

General information

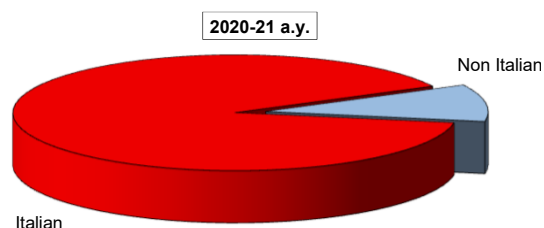
Undergraduate Career

Answers	%	
	a.v.	2020-21
Undergraduate Bocconi Program	20	69,0
Other University Program	9	31,0
Total	29	100,0
NA	0	



Nationality

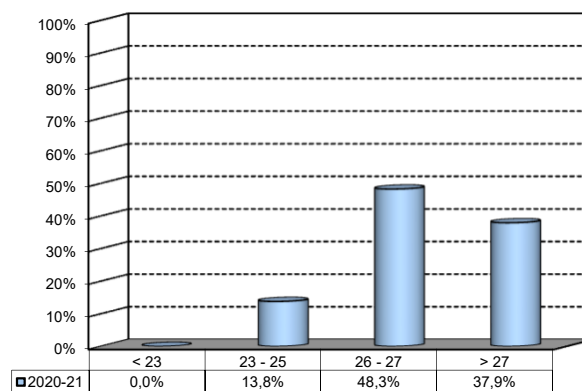
Answers	%	
	a.v.	2020-21
Italian	26	89,7%
Non Italian	3	10,3%
Total	29	100%
NA	0	



Average mark of the exams passed:

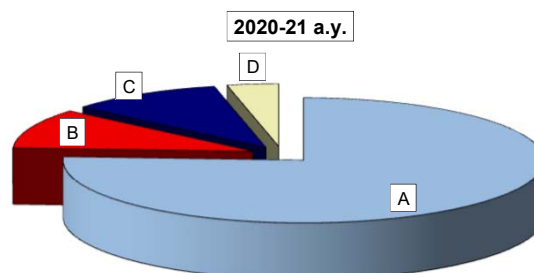
(approximate average expressed in 30/30)

Answers	%	
	a.v.	2020-21
18	0	0,0%
19	0	0,0%
20	0	0,0%
21	0	0,0%
22	0	0,0%
23	0	0,0%
24	1	3,4%
25	3	10,3%
26	5	17,2%
27	9	31,0%
28	9	31,0%
29	2	6,9%
30	0	0,0%
Total	29	100%
NA	0	



How many of the courses included in your curriculum did you attend regularly?

Answers	%	
	a.v.	2020-21
A - More than 75%	22	75,9
B - Between 50 and 75%	3	10,3
C - Between 25 and 50%	3	10,3
D - Less than 25%	1	3,4
Total	29	100,0
NA	0	

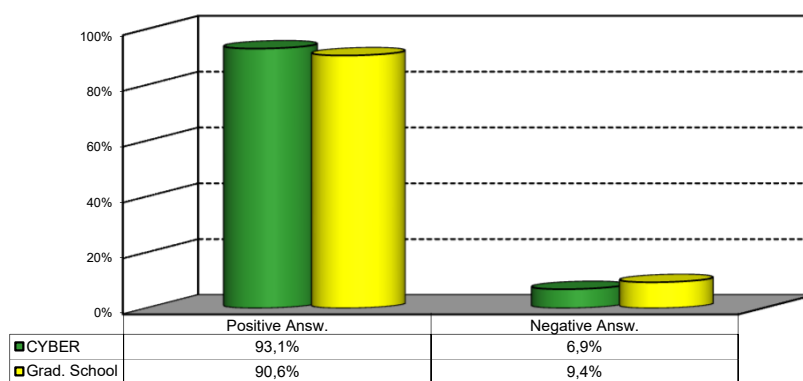


Study Experience

1) On the whole, do you think that the MSc program you attended at Bocconi enabled in-depth study of topics in both a theoretical and a practical sense?

Answers	Italian		Non Italian		Total	
	a.v.	%	a.v.	%	a.v.	%
A - Definitely YES	12	46,2%	3	100,0%	15	51,7%
B - More YES than NO	12	46,2%	0	0,0%	12	41,4%
C - More NO than YES	1	3,8%	0	0,0%	1	3,4%
D - Definitely NO	1	3,8%	0	0,0%	1	3,4%
Total	26	100%	3	100%	29	100%
NA	0		0			

Comparison with the overall School data



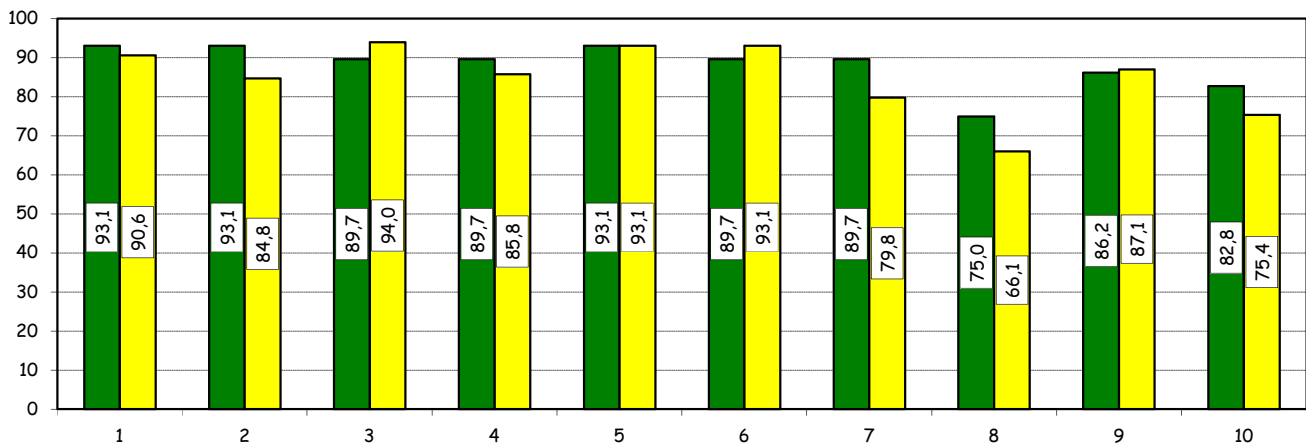
Study Experience

2) Do you think that your course of study at Bocconi has contributed to the development of the following skills?

Soft Skill	Item	Definitely YES		More YES than NO		More NO than YES		Definitely NO		Total		n.a.
		a.v.	%	a.v.	%	a.v.	%	a.v.	%	a.v.	%	a.v.
1	Ability to work in team	25	86,2	2	6,9	1	3,4	1	3,4	29	100,0	0
2	Interpersonal skills	20	69,0	7	24,1	1	3,4	1	3,4	29	100,0	0
3	Organizational skills	16	55,2	10	34,5	2	6,9	1	3,4	29	100,0	0
4	Critical thinking skills	15	51,7	11	37,9	2	6,9	1	3,4	29	100,0	0
5	Ability to analyze and select information	18	62,1	9	31,0	1	3,4	1	3,4	29	100,0	0
6	Problem-solving ability	21	72,4	5	17,2	2	6,9	1	3,4	29	100,0	0
7	Written communication skills	17	58,6	9	31,0	2	6,9	1	3,4	29	100,0	0
8	Verbal communication skills	11	39,3	10	35,7	6	21,4	1	3,6	28	100,0	1
9	Ability to cope with stress	15	51,7	10	34,5	1	3,4	3	10,3	29	100,0	0
10	Entrepreneurial spirit	16	55,2	8	27,6	3	10,3	2	6,9	29	100,0	0

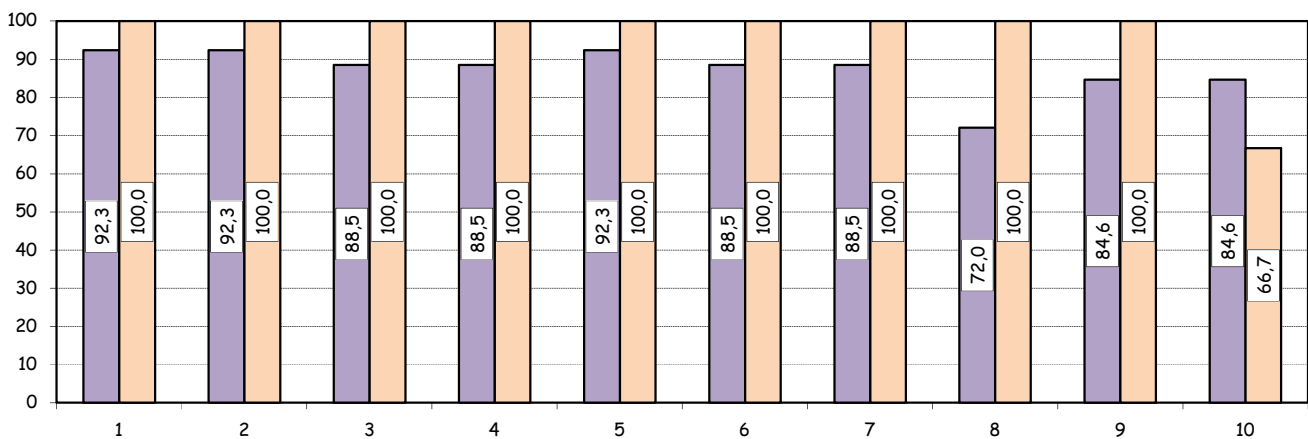
Positive answers (%):
comparison with the overall School data

■ CYBER ■ Grad. School



Positive answers (%):
comparison based on nationality of student

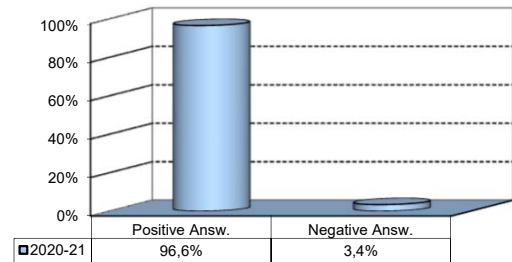
■ Italian ■ Non Italian



Study Experience

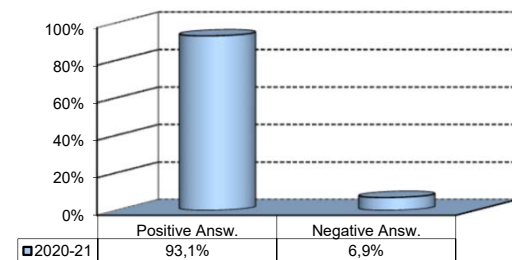
3) Do you think that teaching activities in the MSc program were structured in an active manner (frequent use of teamwork, case studies, assignments, etc.)?

Answers	a.v.	%
A - Definitely YES	21	72,4%
B - More YES than NO	7	24,1%
C - More NO than YES	1	3,4%
D - Definitely NO	0	0,0%
Total	29	100%
NA	0	



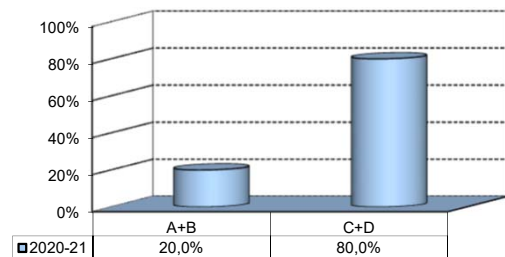
4) Do you think that the courses in your curriculum were adequately coordinated with each other?

Answers	a.v.	%
A - Definitely YES	10	34,5%
B - More YES than NO	17	58,6%
C - More NO than YES	1	3,4%
D - Definitely NO	1	3,4%
Total	29	100%
NA	0	



5) During the MSc program, did you notice any unnecessary overlaps or repetitions of subjects and content with what you studied during your undergraduate program?

Answers	a.v.	%
A-Very often	1	5,0%
B-Often	3	15,0%
C-Hardly ever	7	35,0%
D-Never	9	45,0%
Total	20	100%
NA	9	



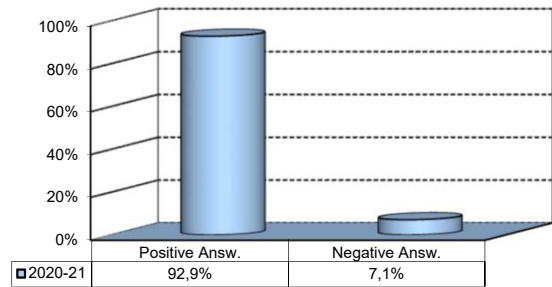
Please select the course or courses in the MSc program in which you encountered overlaps or unnecessary repetitions (multiple answers admitted)

Course	a.v.	%
SOFTWARE METHODOLOGIES AND ARCHITECTURES FOR SECURITY - MODULE 1: ENTERPRISE ICT ARCHITECTURES - 4 INSEGNAMENTI DI MAJOR	1	33,3%
SEMINARI PER LO SVILUPPO DI ABILITA' COMPORTAMENTALI - SEMINARI PER LO SVILUPPO DELLE COMPETENZE MANAGERIALI E DI LEADERSHIP	1	33,3%
MANAGERIALI E DI LEADERSHIP	1	33,3%
TOTAL	3	100,0%

Study Experience

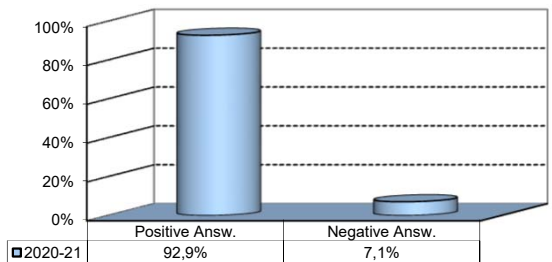
6) Do you think that the overall study load was compatible with the length of the program?

Answers	a.v.	%
A - Definitely YES	13	46,4%
B - More YES than NO	13	46,4%
C - More NO than YES	1	3,6%
D - Definitely NO	1	3,6%
Total	28	100%
NA	1	



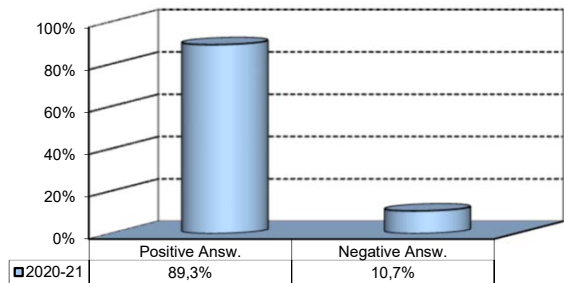
7) Was the coordination of the study program appropriately managed by the Program Director?

Answers	a.v.	%
A - Definitely YES	19	67,9%
B - More YES than NO	7	25,0%
C - More NO than YES	2	7,1%
D - Definitely NO	0	0,0%
Total	28	100%
NA	1	



8) On the whole, were the classroom climate and relationships with your classmates positive and able to enrich your personal experience?

Answers	a.v.	%
A - Definitely YES	16	57,1%
B - More YES than NO	9	32,1%
C - More NO than YES	3	10,7%
D - Definitely NO	0	0,0%
Total	28	100%
NA	1	

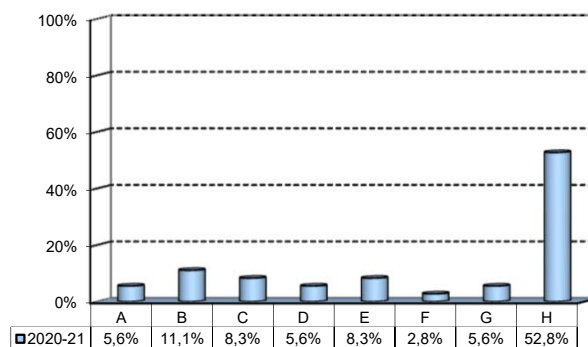


Extracurricular Activities

1) Which of the following extracurricular activities did you attend during your study program?

(multiple answers admitted)

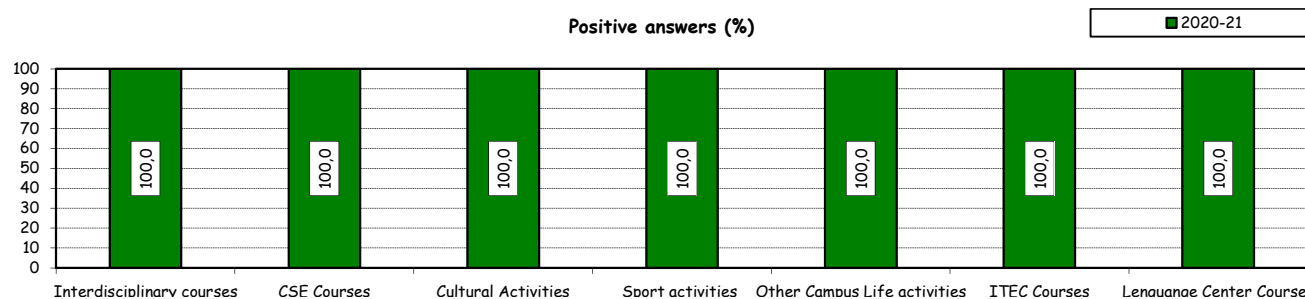
Answers	a.v.	%
A - Interdisciplinary courses ("Sapere a tutto campo")	2	5,6%
B - Counseling and Self-Empowerment courses CSE	4	11,1%
C - Cultural Activities (visit museums, concerts, theatre and cinema, various issues)	3	8,3%
D - Sport activities	2	5,6%
E - Other Campus Life activities	3	8,3%
F - Courses offered by ITEC	1	2,8%
G - Courses offered by Language Center	2	5,6%
H - None	19	52,8%
Total	36	100%
NA	0	



2) Do you think that the activities you took part in contributed to your cultural/educational enrichment?

	Definitely YES		More YES than NO		More NO than YES		Definitely NO		Total		NA
	a.v.	%	a.v.	%	a.v.	%	a.v.	%	a.v.	%	a.v.
A - Interdisciplinary courses (Sapere a tutto campo)	1	50,0	1	50,0	0	0,0	0	0,0	2	100,0	0
B - CSE Courses	4	100,0	0	0,0	0	0,0	0	0,0	4	100,0	0
C - Cultural Activities	1	50,0	1	50,0	0	0,0	0	0,0	2	100,0	1
D - Sport activities	1	50,0	1	50,0	0	0,0	0	0,0	2	100,0	0
E - Other Campus Life activities	2	66,7	1	33,3	0	0,0	0	0,0	3	100,0	0
F - Courses offered by ITEC	1	100,0	0	0,0	0	0,0	0	0,0	1	100,0	0
G - Courses offered by Language Center	2	100,0	0	0,0	0	0,0	0	0,0	2	100,0	0

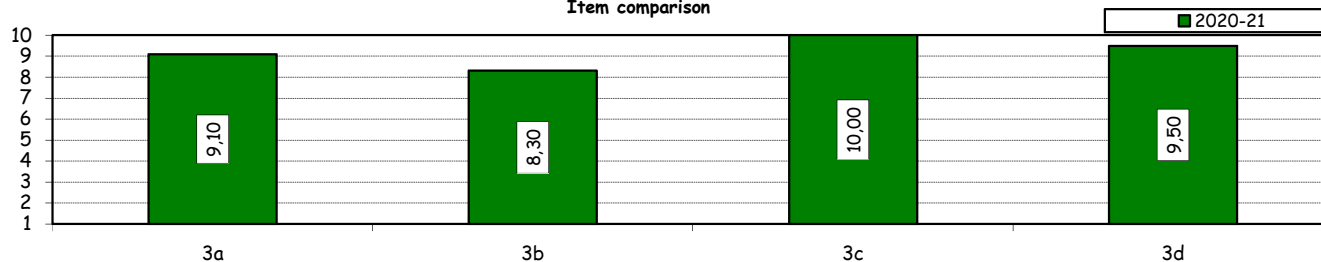
Positive answers (%)



How would you evaluate:

Item	Answers	Negative				Positive				Total		NA
		1-2		3-4-5		6-7-8		9-10		a.v.	%	
		a.v.	%	a.v.	%	a.v.	%	a.v.	%	a.v.	%	
3a) The range and interest of programmes offered		0	0,0	0	0,0	4	40,0	6	60,0	10	100,0	0
3b) The support you received from the Campus Life Office		0	0,0	0	0,0	5	50,0	5	50,0	10	100,0	0
3c) The support you received from ITEC		0	0,0	0	0,0	0	0,0	1	100,0	1	100,0	0
3d) The support you received from Language Center		0	0,0	0	0,0	0	0,0	2	100,0	2	100,0	0

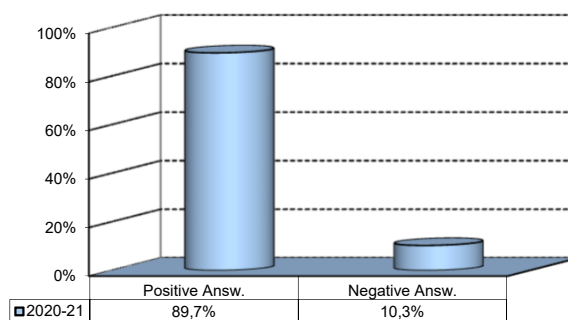
Item comparison



Degree Thesis

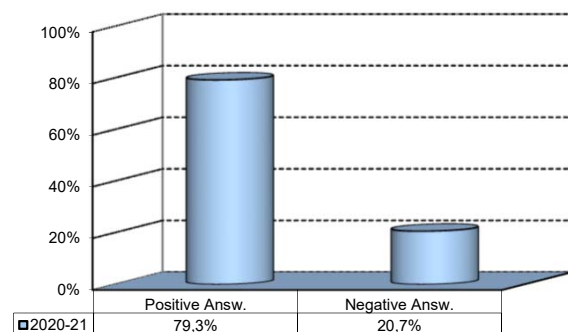
1) Do you think that the supervision and the assistance for preparing for your thesis were appropriate?

Answers	a.v.	%
A - Definitely YES	13	44,8%
B - More YES than NO	13	44,8%
C - More NO than YES	3	10,3%
D - Definitely NO	0	0,0%
Total	29	100%
NA	0	



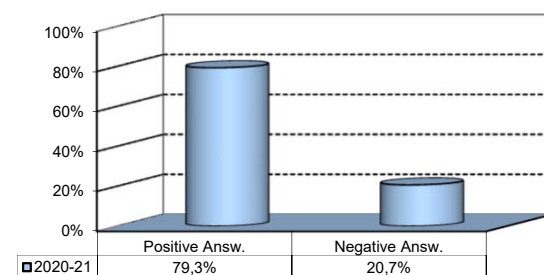
2) Do you think that the facilities provided by the University (library, computer labs) adequately supported preparation for your thesis?

Answers	a.v.	%
A - Definitely YES	11	37,9%
B - More YES than NO	12	41,4%
C - More NO than YES	5	17,2%
D - Definitely NO	1	3,4%
Total	29	100%
NA	0	



3) Do you think that your thesis was a useful experience for completing your education and a way to verify your planning and writing skills?

Answers	a.v.	%
A - Definitely YES	13	44,8%
B - More YES than NO	10	34,5%
C - More NO than YES	5	17,2%
D - Definitely NO	1	3,4%
Total	29	100%
NA	0	



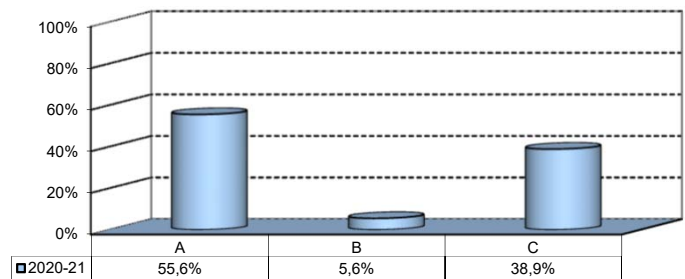
Internship Activities

1) Which activity recognized in your curriculum did you complete during the MSc program?

Answers	a.v.	%
	2020-21	
A - Internship/Other job experience	26	89,7
B - Field Project	0	0,0
C - Alternative Activity [^]	3	10,3
Total	29	100,0
NA	0	

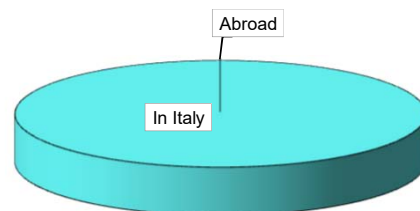
2) How did you find the internship?*

Answers	a.v.	%
A - Through the University's Placement Services	10	55,6%
B - Through the faculty members of the degree program	1	5,6%
C - Through autonomous way then recognized by the degree program	7	38,9%
Total	18	100,0%
NA	11	



3) Where did you complete the internship recognized by the Bachelor program?

Answers	a.v.	%
	2020-21	
In Italy	26	100,0%
Abroad	0	0,0%
Total	26	100%
NA	0	



*: This item has not been submitted to students since the April 2022 graduation session

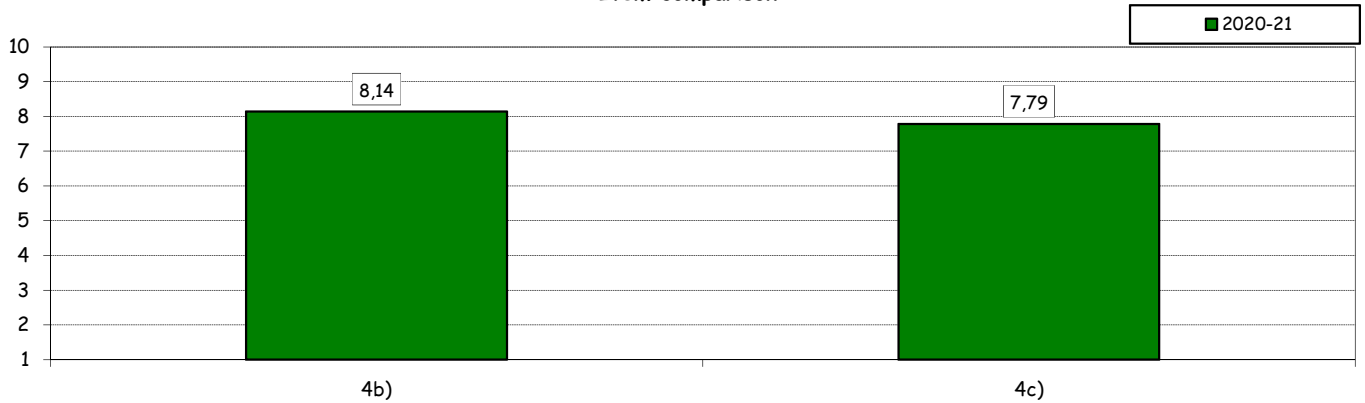
[^]: During the pandemic, students were given the opportunity to replace the mandatory internship with an alternative activity called Career Start Pack. It consists in an elective exam integrated with mandatory participation in the virtual career orientation path

Internship Activities

How would you evaluate:

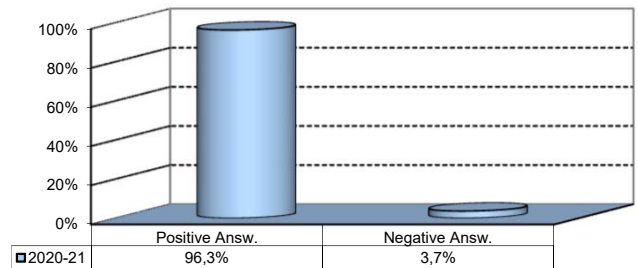
Item	Answers	Negative				Positive				Total		N.A.
		1-2		3-4-5		6-7-8		9-10		a.v.	%	a.v.
		a.v.	%	a.v.	%	a.v.	%	a.v.	%			
4a) The number and variety of opportunities offered.		0	0,0	1	7,1	5	35,7	8	57,1	14	100,0	4
4b) The support you received from the Internship Office.		0	0,0	3	21,4	4	28,6	7	50,0	14	100,0	4

Item comparison



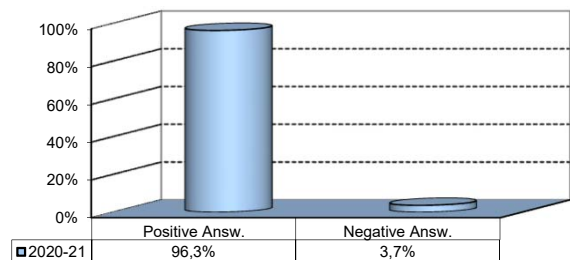
5) Would you positively evaluate this experience?

Answers	a.v.	%
A - Definitely YES	20	74,1%
B - More YES than NO	6	22,2%
C - More NO than YES	1	3,7%
D - Definitely NO	0	0,0%
Total	27	100%
NA	2	



6) Do you think that the qualifications you acquired while attending the MSc program were appropriate to perform this activity?

Answers	a.v.	%
A - Definitely YES	21	77,8%
B - More YES than NO	5	18,5%
C - More NO than YES	1	3,7%
D - Definitely NO	0	0,0%
Total	27	100%
NA	2	

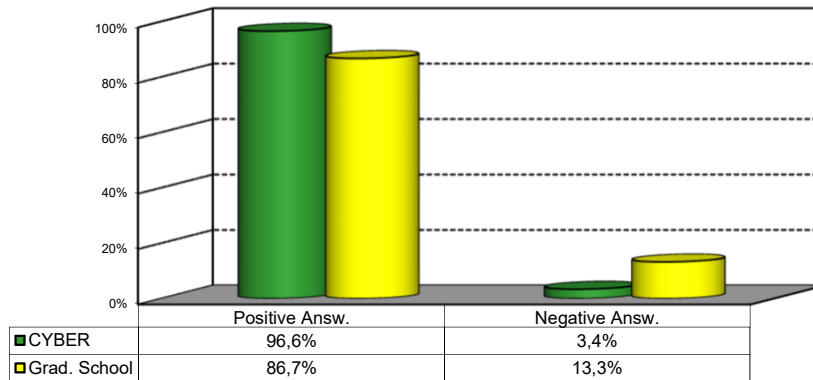


General satisfaction and short-term plans

1) Are you satisfied overall with the study program you attended?

Answers	Italian		Non Italian		Total	
	a.v.	%	a.v.	%	a.v.	%
A - Definitely YES	16	61,5%	3	100,0%	19	65,5%
B - More YES than NO	9	34,6%	0	0,0%	9	31,0%
C - More NO than YES	0	0,0%	0	0,0%	0	0,0%
D - Definitely NO	1	3,8%	0	0,0%	1	3,4%
Total	26	100%	3	100%	29	100%
NA	0		0		0	

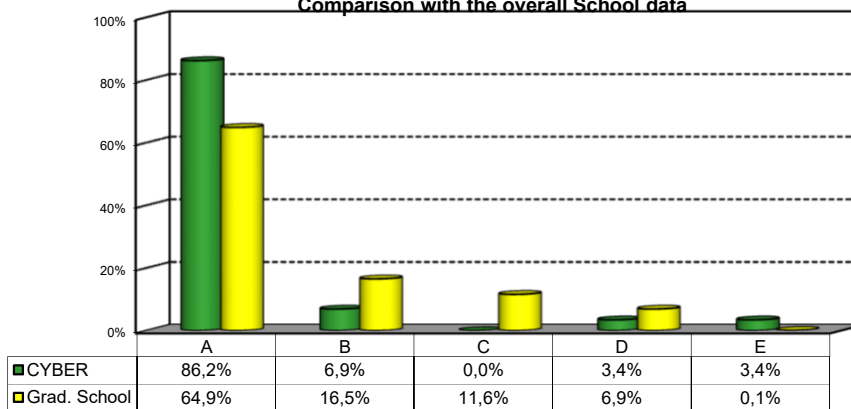
Comparison with the overall School data



2a) If you could go back in time, would you enroll in the University again?

Answers	Italian		Non Italian		Total	
	v.a.	%	v.a.	%	v.a.	%
A-YES, in the same program at this University	22	84,6%	3	100,0%	25	86,2%
B-YES, in another program at this University	2	7,7%	0	0,0%	2	6,9%
C-YES, in the same program but at another University	0	0,0%	0	0,0%	0	0,0%
D-YES, in another program at another University	1	3,8%	0	0,0%	1	3,4%
E-NO, I would not enrol in university anymore	1	3,8%	0	0,0%	1	3,4%
Total	26	100%	3	100%	29	100%
NA	0		0		0	

Comparison with the overall School data



General satisfaction and short-term plans

2c) Why would you make a different choice?

(In case of answer "B", "C", "D" or "E" to item no.2a)

Answers	a.v.	% 2020-21
A - My interest has changed over time / I discovered that I have different attitudes	2	50,0%
B -The MS program did not satisfy my expectations	1	25,0%
C - I would have preferred to attend a Bachelor program with a more generalist approach	0	0,0%
D -I would have preferred to attend a MS program with a more specialist approach	0	0,0%
E - I would have preferred to attend the same MS program but taught in English	0	0,0%
F - Other reasons	1	25,0%
Total	4	100%
NA	0	

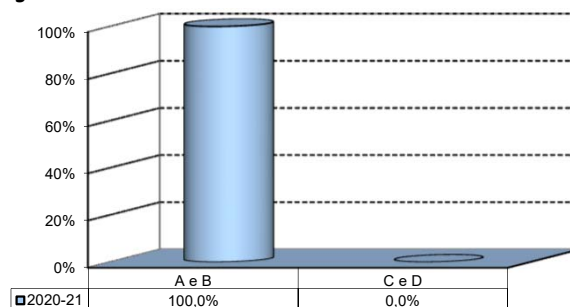
F- Other reasons:

Il livello educativo di questo corso e' molto basso

Infrastructure: Classrooms, Library And Facilities

1) What is your opinion about the classrooms where lessons and other teaching activities have been held?*

Answers	a.v.	%
A - Always or nearly always adequate	20	69,0%
B - Often adequate	9	31,0%
C - Rarely adequate	0	0,0%
D - Never adequate	0	0,0%
E - I did not use them	0	0,0%
Total	29	100%
NA	0	

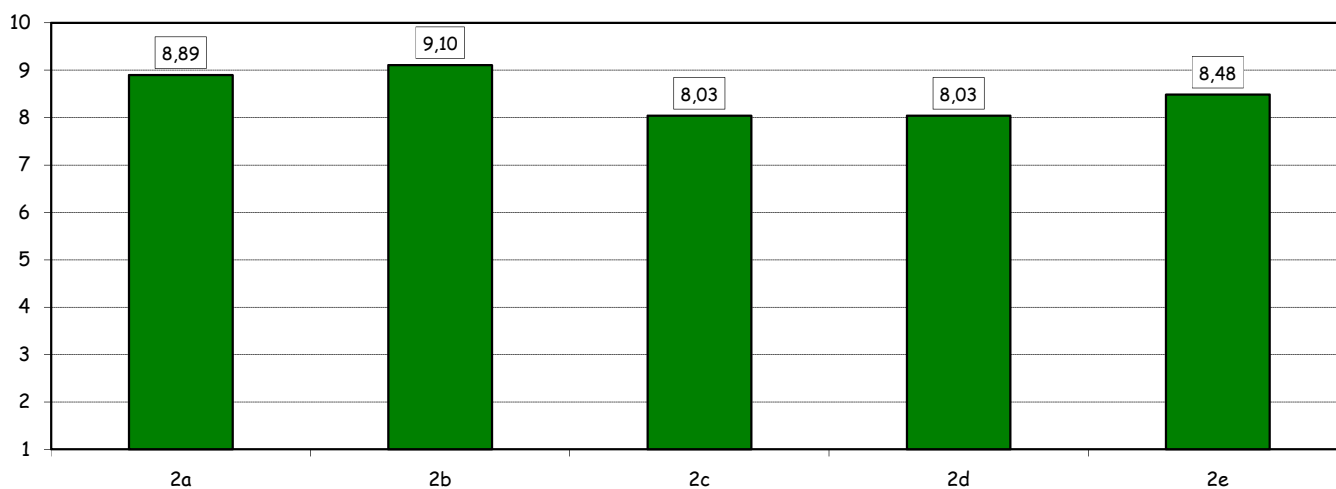
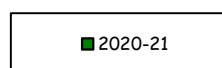


2) How would you evaluate:

(In case of answer "A", "B", "C" or "D" to item no.1)

Item	Answers	Negative				Positive				Total		NA	N.R.
		1-2		3-4-5		6-7-8		9-10		a.v.	%		
		a.v.	%	a.v.	%	a.v.	%	a.v.	%				
a) The adequacy of the audio and multimedia systems (e.g. instructor's computer, projectors, video players) installed in the classrooms.		0	0,0	1	3,6	7	25,0	20	71,4	28	100,0		1
b) The cleanliness of classrooms and of other common areas on campus (corridors, halls, study rooms).		0	0,0	2	6,9	3	10,3	24	82,8	29	100,0		0
c) The adequacy of the amount of areas/seats reserved to individual study in the University Library.		1	3,4	5	17,2	6	20,7	17	58,6	29	100,0	0	0
d) The adequacy of the amount of areas/seats reserved to individual study in other buildings on campus.		1	3,4	4	13,8	7	24,1	17	58,6	29	100,0	0	0
e) The clarity and adequacy of the signage system on campus.		0	0,0	3	11,1	8	29,6	16	59,3	27	100,0		2

Item comparison

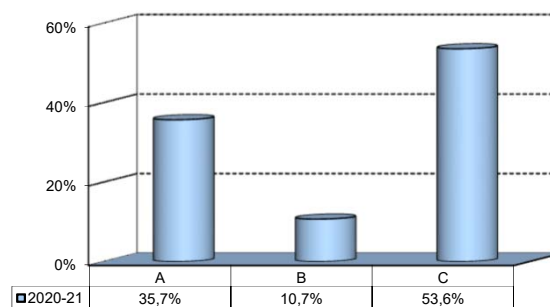


(*): the percentage shown on the graphs is calculated by excluding the responses of those who declare that they have not used the service.

Infrastructure: Classrooms, Library And Facilities

3) What is your overall opinion on the PC Labs and IT facilities provided by the University?

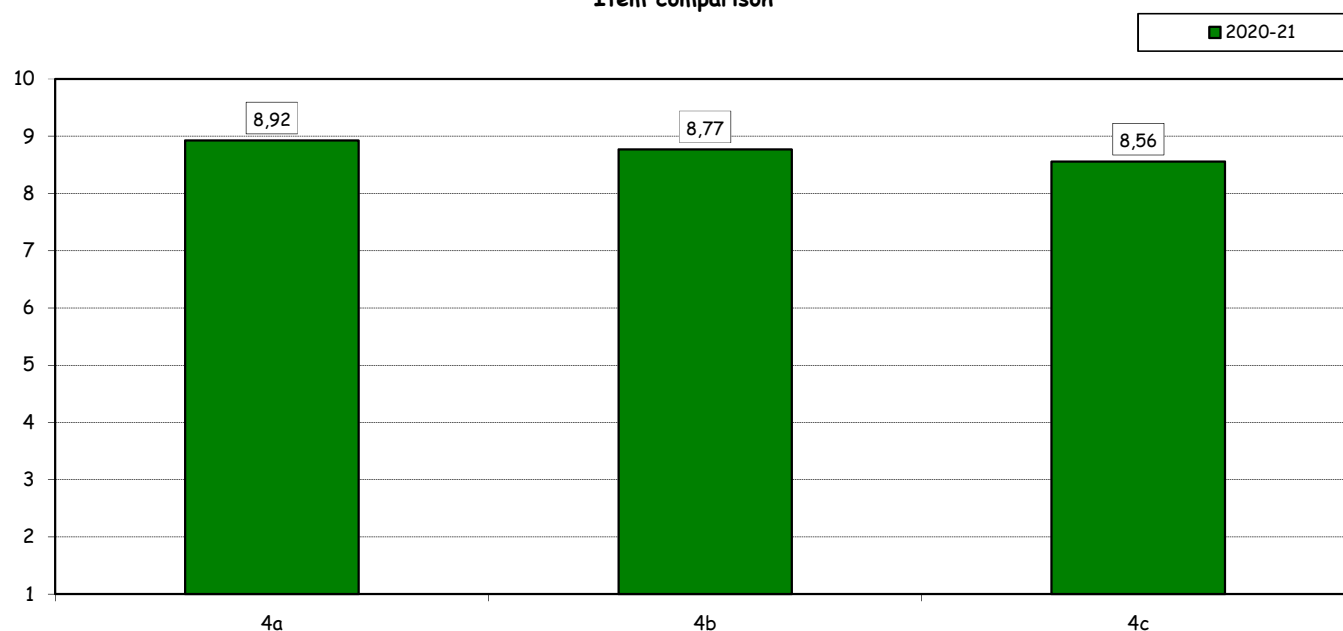
Answers	a.v.	%
A- Adequate in number	10	35,7%
B- Inadequate in number	3	10,7%
C- Never used	15	53,6%
Total	28	100%
NA	1	



4) How do you evaluate:

Item	Answers	Negative				Positive				Total		N.R.
		1-2		3-4-5		6-7-8		9-10		a.v.	%	
		a.v.	%	a.v.	%	a.v.	%	a.v.	%			
a) The availability of technical staff supporting students (Tutors) in PC Labs.*		0	0,0	0	0,0	4	30,8	9	69,2	13	100,0	0
b) The convenience of the PC Labs' opening hours.*		0	0,0	0	0,0	4	30,8	9	69,2	13	100,0	0
c) The level of accessibility and usability of the University's IT services (Internet access points, Punto Blu, Virtual Punto Blu, wireless connection).		0	0,0	1	3,7	11	40,7	15	55,6	27	100,0	1

Item comparison

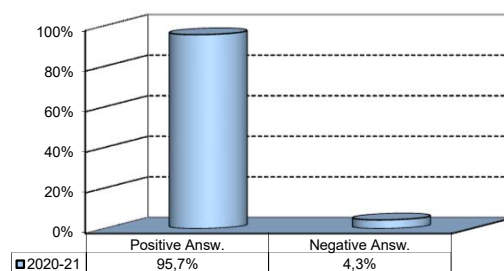


(*): Only in case of answer "A" or "B" to item no.3

Infrastructure: Classrooms, Library And Facilities

5) What is your overall opinion on the Library's services, such as support for individual study?*

Answers	a.v.	%
A - Very Positive	15	53,6%
B - Quite positive	7	25,0%
C - Quite negative	1	3,6%
D - Very Negative	0	0,0%
E - Never used	5	17,9%
Total	28	100%
NA	1	

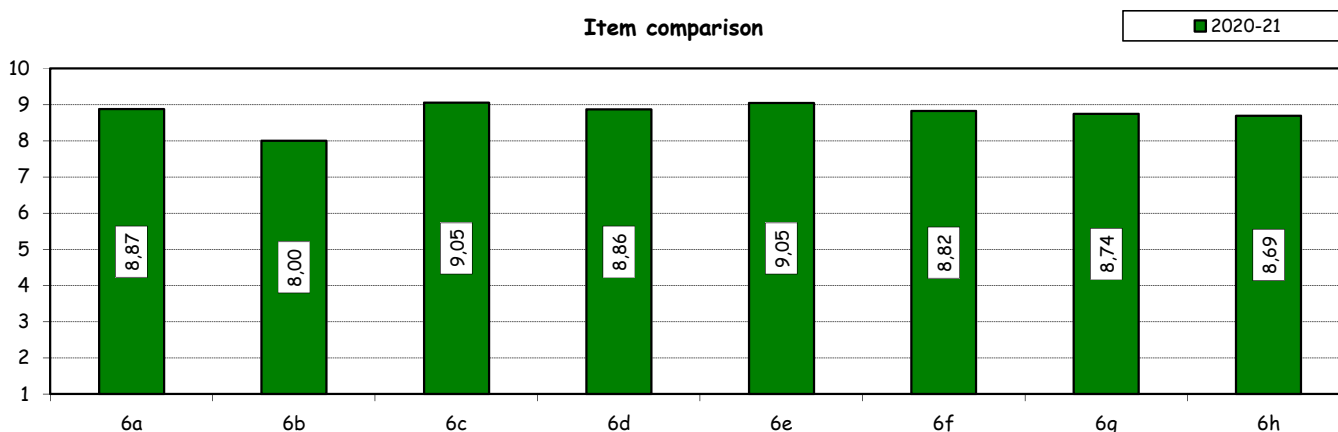


6) How would you evaluate:

(In case of answer "A", "B", "C" or "D" to item no. 5)

Item	Answers	Negative				Positive				Total		N.A.
		1-2		3-4-5		6-7-8		9-10		a.v.	%	a.v.
		a.v.	%	a.v.	%	a.v.	%	a.v.	%			
a) The convenience of the Library's opening hours and access to its main services.		0	0,0	2	8,7	5	21,7	16	69,6	23	100,0	0
b) The range of collections available in the Library and the frequency they are updated (books, magazines, electronic resources, databases).		3	13,0	0	0,0	7	30,4	13	56,5	23	100,0	0
c) The speed of fulfillment of requests for documents provided by other Libraries.		0	0,0	0	0,0	6	31,6	13	68,4	19	100,0	4
d) The number of documents that may be borrowed and the duration of the loan period.		0	0,0	1	4,5	9	40,9	12	54,5	22	100,0	1
e) The assistance provided by the Library staff in bibliographic searches for specific topics and in the use of Library's print and electronic collections.		0	0,0	0	0,0	7	31,8	15	68,2	22	100,0	1
f) The efficiency and ease of use of the search tools provided (on and off campus).		0	0,0	1	4,5	7	31,8	14	63,6	22	100,0	1
g) The number of books and journals available on open shelves in the reading rooms.		1	4,3	0	0,0	6	26,1	16	69,6	23	100,0	0
h) The usefulness of workshops offered by the Library to understand how to use the resources available (catalogues, e-journals, databases, etc.).		0	0,0	1	6,3	4	25,0	11	68,8	16	100,0	7

Item comparison



(*): the percentage shown on the graphs is calculated by excluding the responses of those who declare that they have not used the service.