

EVALUATION OF THE DEGREE PROGRAM AND THE UNIVERSITY EXPERIENCE

BACHELOR IN ECONOMICS, MANAGEMENT AND COMPUTER SCIENCE

N° QUESTIONNAIRES PROCESSED: 80

N° OF GRADUATE STUDENTS: 84

RESPONSE RATE: 95,2%



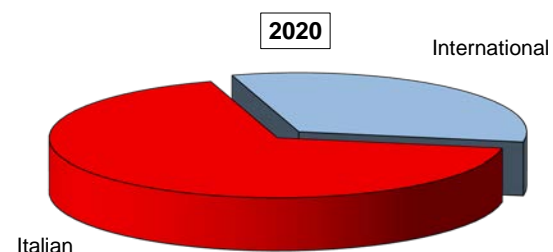
EVALUATION OF STUDENT EXPERIENCE

Bachelor of Science in Economics, Management and Computer Science

General information

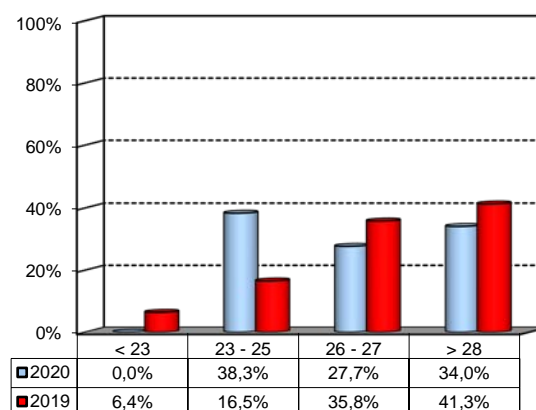
School Career

Answers	a.v.	%	
		2020	2019
Italian	54	67,5%	80,9%
International	26	32,5%	19,1%
Total	80	100%	100%
NA	0		



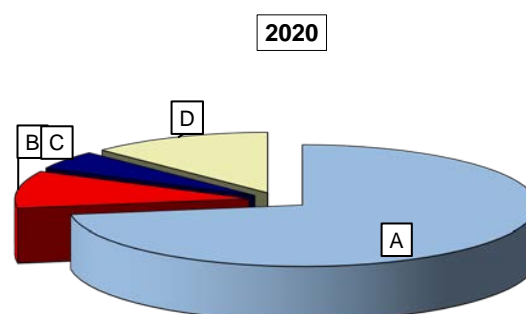
Average mark of the exams passed: (approximate average expressed in 30/30)

Answers	a.v.	%
< 23	4	0,0%
23 - 25	31	38,3%
26 - 27	20	27,7%
> 28	25	34,0%
Total	80	100%
NA	0	



How many of the courses included in your curriculum did you attend regularly?

Answers	a.v.	%	
		2020	2019
A - More than 75%	58	72,5%	89,1%
B - Between 50 and 75%	8	10,0%	10,9%
C - Between 25 and 50%	4	5,0%	0,0%
D - Less than 25%	10	12,5%	0,0%
Total	80	100%	100%
NA	0		

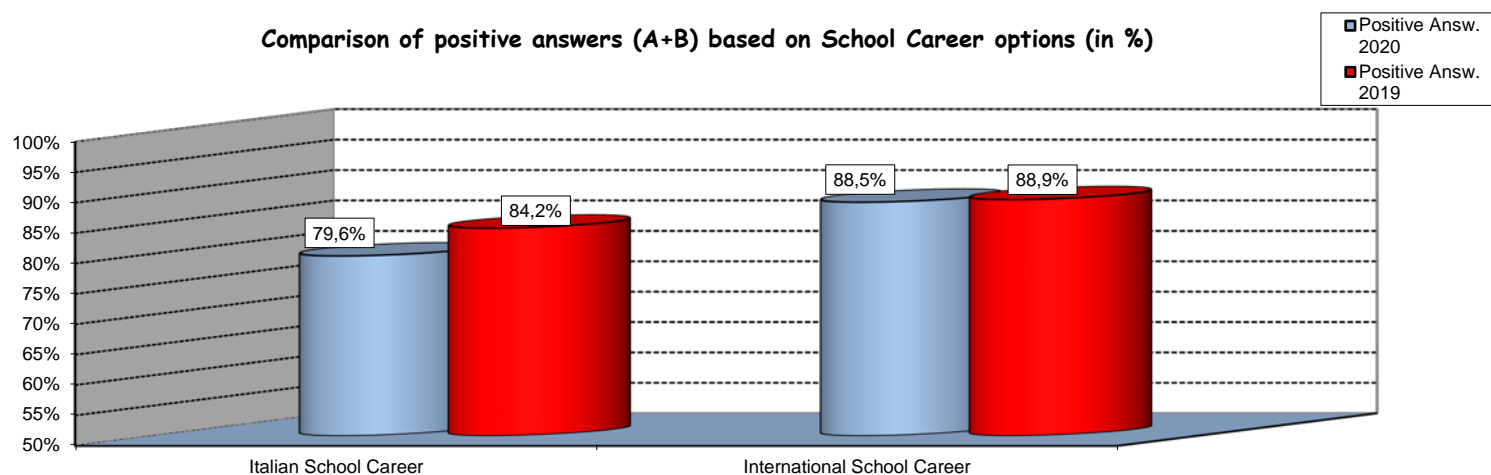


Study experience

1) Was the knowledge acquired during secondary school adequate to undertake your Bachelor program?

Answers	Italian School Career		International School Career		Total	
	a.v.	%	a.v.	%	a.v.	%
A - Definitely YES	23	42,6%	14	53,8%	37	46,3%
B - More YES than NO	20	37,0%	9	34,6%	29	36,3%
C - More NO than YES	6	11,1%	3	11,5%	9	11,3%
D - Definitely NO	5	9,3%	0	0,0%	5	6,3%
Total	54	100%	26	100%	80	100%
NA	0		0		0	

Comparison of positive answers (A+B) based on School Career options (in %)



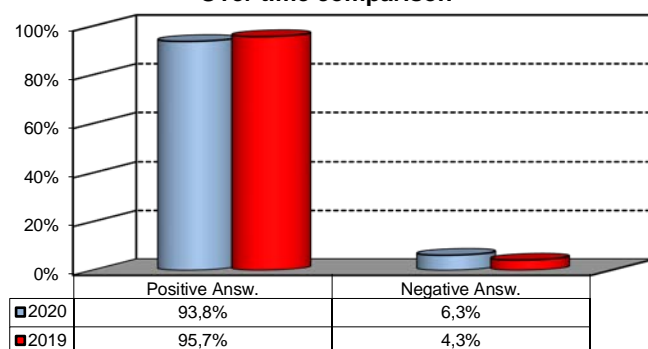
2) if you answered " More NO than YES" or "Definitely NO", indicate the subject or the subjects for which your previous knowledge revealed to be insufficient:

	a.v.	%
ADVANCED MATHEMATICS AND STATISTICS - MODULE 1 (APPLIED MATHEMATICS)	8	21,1%
MATHEMATICS AND STATISTICS - MODULE 2 (STATISTICS)	7	18,4%
MATHEMATICS AND STATISTICS - MODULE 1 (MATHEMATICS)	6	15,8%
ADVANCED MATHEMATICS AND STATISTICS - MODULE 2 (ADVANCED STATISTICAL METHODS)	5	13,2%
FUNDAMENTALS OF COMPUTER SCIENCE	5	13,2%
Altro	7	18,4%
Total	38	100%

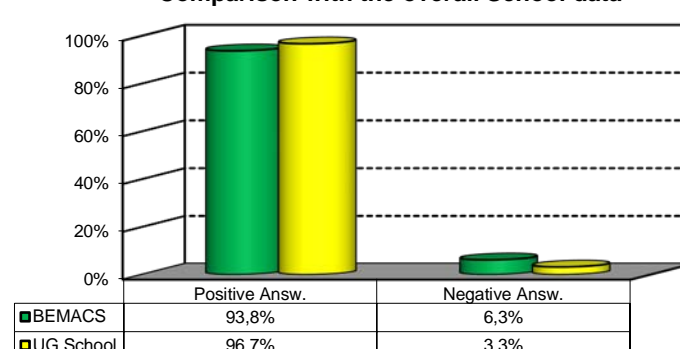
3) On the whole, do you appreciate the qualifications you acquired at the end of the Bachelor program at Bocconi?

Aswers	Italian school Career		Int.nal School Career		Total	
	v.a.	%	v.a.	%	v.a.	%
A - Definitely YES	28	51,9%	13	50,0%	41	51,3%
B - More YES than NO	23	42,6%	11	42,3%	34	42,5%
C - More NO than YES	3	5,6%	2	7,7%	5	6,3%
D - Definitely NO	0	0,0%	0	0,0%	0	0,0%
Total	54	100%	26	100%	80	100%
NA	0		0		0	

Over time comparison



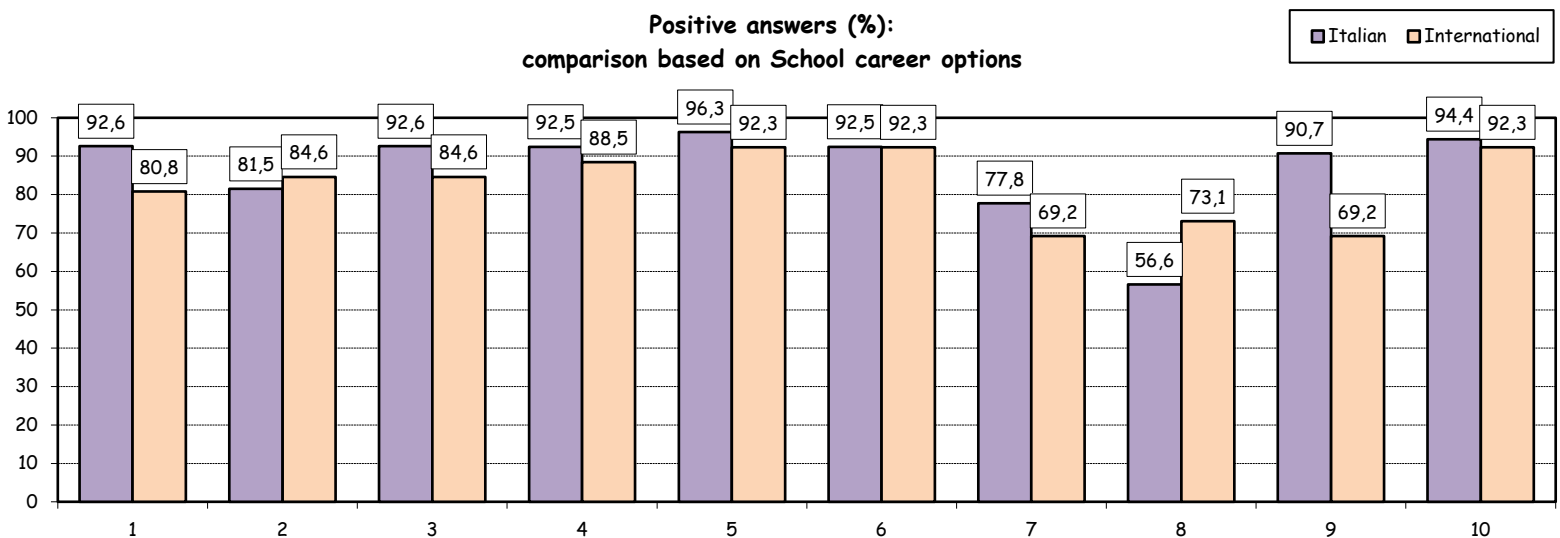
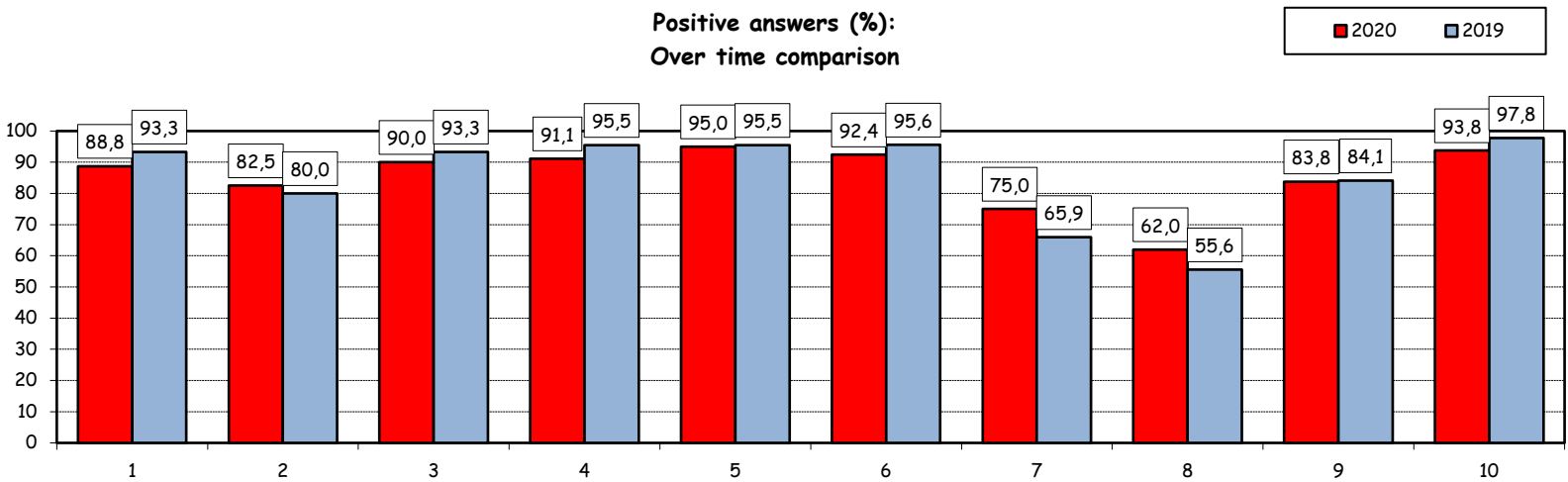
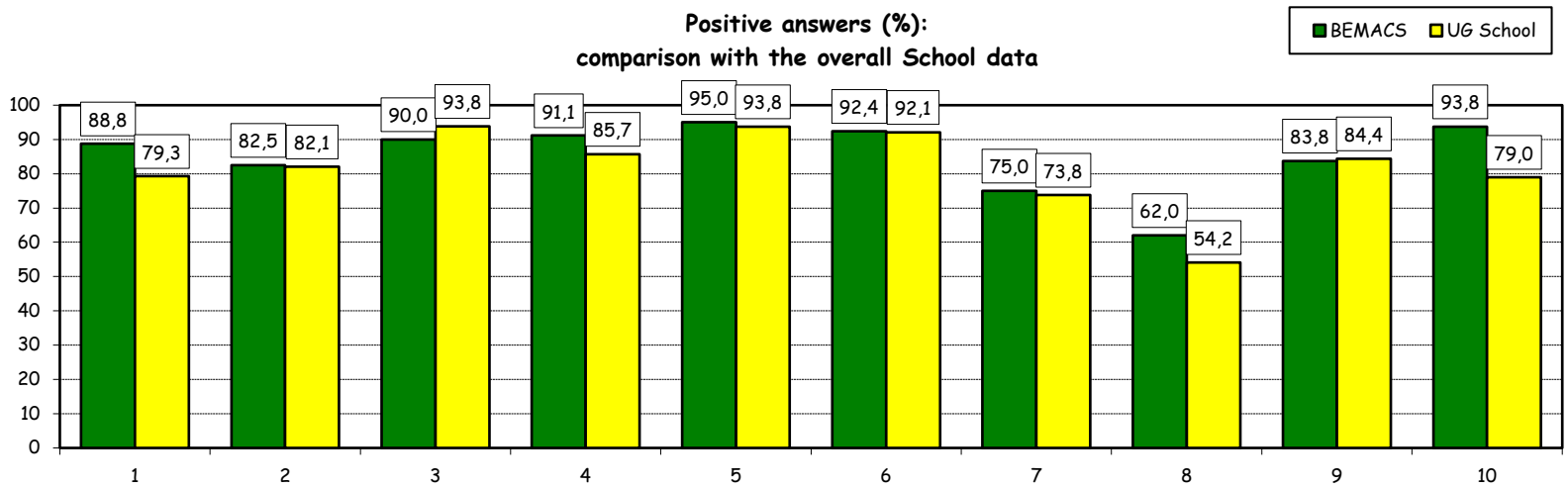
Comparison with the overall School data



Study experience

4) Do you think that your course of study at Bocconi has contributed to the development of the following skills?

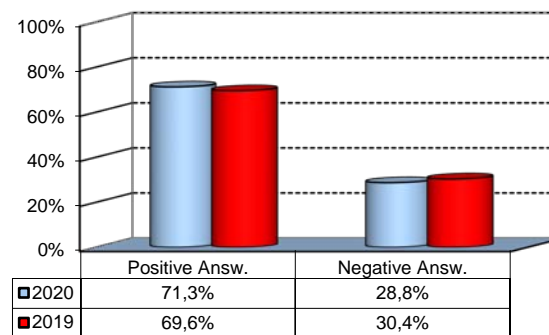
Soft Skill	Item	Definitely YES		More YES than NO		More NO than YES		Definitely NO		Total		n.a.
		a.v.	%	a.v.	%	a.v.	%	a.v.	%	a.v.	%	a.v.
1	Ability to work on a team	26	32,5	45	56,3	9	11,3	0	0,0	80	100,0	0
2	Interpersonal skills	30	37,5	36	45,0	13	16,3	1	1,3	80	100,0	0
3	Organizational skills	37	46,3	35	43,8	6	7,5	2	2,5	80	100,0	0
4	Critical thinking skills	36	45,6	36	45,6	6	7,6	1	1,3	79	100,0	1
5	Ability to analyze and select information	47	58,8	29	36,3	4	5,0	0	0,0	80	100,0	0
6	Problem-solving ability	39	49,4	34	43,0	6	7,6	0	0,0	79	100,0	1
7	Written communication skills	22	27,5	38	47,5	15	18,8	5	6,3	80	100,0	0
8	Verbal communication skills	13	16,5	36	45,6	24	30,4	6	7,6	79	100,0	1
9	Ability to cope with stress	33	41,3	34	42,5	8	10,0	5	6,3	80	100,0	0
10	Computer Skills	59	73,8	16	20,0	4	5,0	1	1,3	80	100,0	0



Study experience

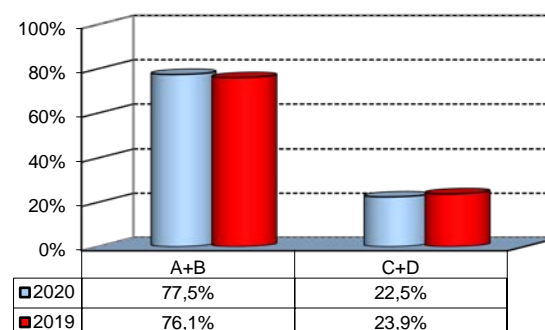
5) Do you think that the courses in your curriculum were adequately coordinated with each other?

	a.v.	%
A - Definitely YES	13	16,3%
B - More YES than NO	44	55,0%
C - More NO than YES	16	20,0%
D - Definitely NO	7	8,8%
Total	80	100%
NA	0	



6a) Do you think that the overall study load was compatible with the length of the program?

	a.v.	%
A - Definitely YES	25	31,3%
B - More YES than NO	37	46,3%
C - More NO than YES	15	18,8%
D - Definitely NO	3	3,8%
Total	80	100%
NA	0	



6b) Specifically, do you believe that the study load was excessive or insufficient?

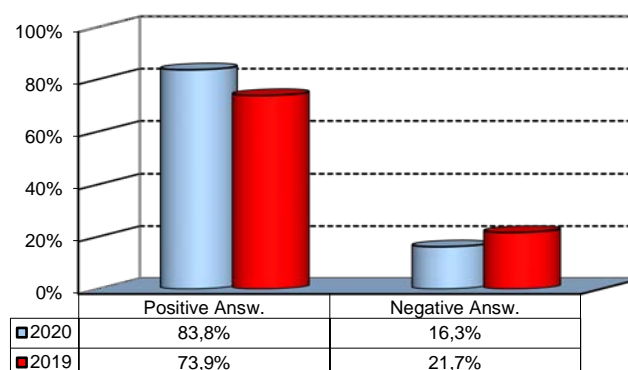
(In case of answer "C" to item no.6a)

	a.v.	% 2020	% 2019
Excessive	9	81,8%	100,0%
Insufficient	2	18,2%	0,0%
Total	11	100%	0%
NA	7		

Final Report

1) Do you think that the supervision and assistance for preparing for your final report (internship report, final paper or other) were adequate?

	a.v.	%
A - Definitely YES	40	50,0%
B - More YES than NO	27	33,8%
C - More NO than YES	12	15,0%
D - Definitely NO	1	1,3%
E - Supervision was not expected	0	0,0%
Total	80	100%
NA	0	

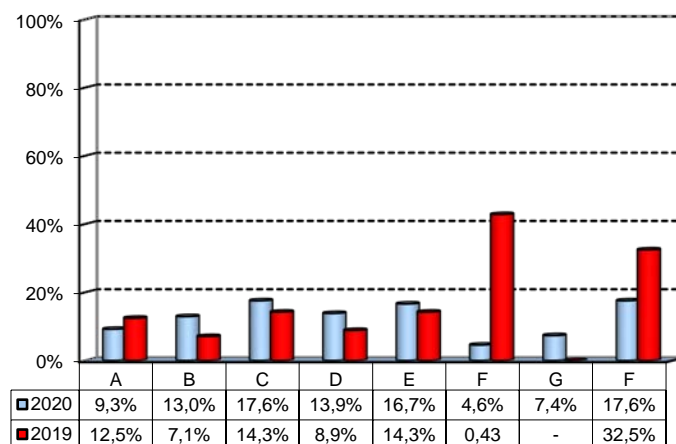


Extracurricular Activities

1) Which of the following extracurricular activities did you attend during the Bachelor Program?

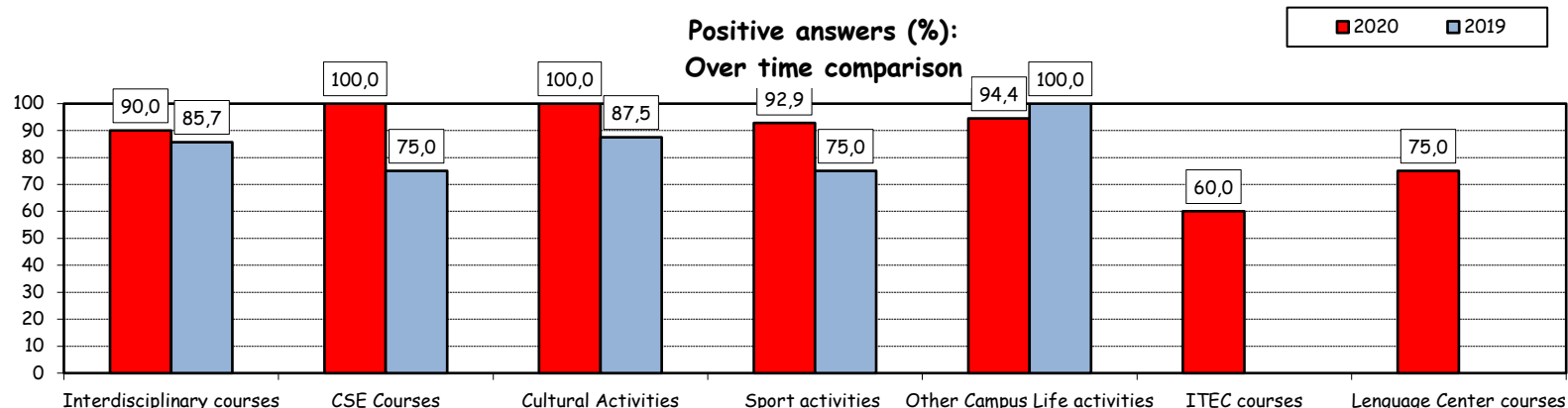
(multiple answers admitted)

	a.v.	%
A - Interdisciplinary courses ("Sapere a tutto campo")	10	9,3%
B - Counseling and Self-Empowerment courses (CSE)	14	13,0%
C - Cultural Activities (visit museums, concerts, theatre and cinema, various issues)	19	17,6%
D - Sport activities	15	13,9%
E - Other Campus Life activities	18	16,7%
F - IT Education Center courses (ITEC)	5	4,6%
G - Language Center courses	8	7,4%
H - None	19	17,6%
Total	108	100%
NA	0	



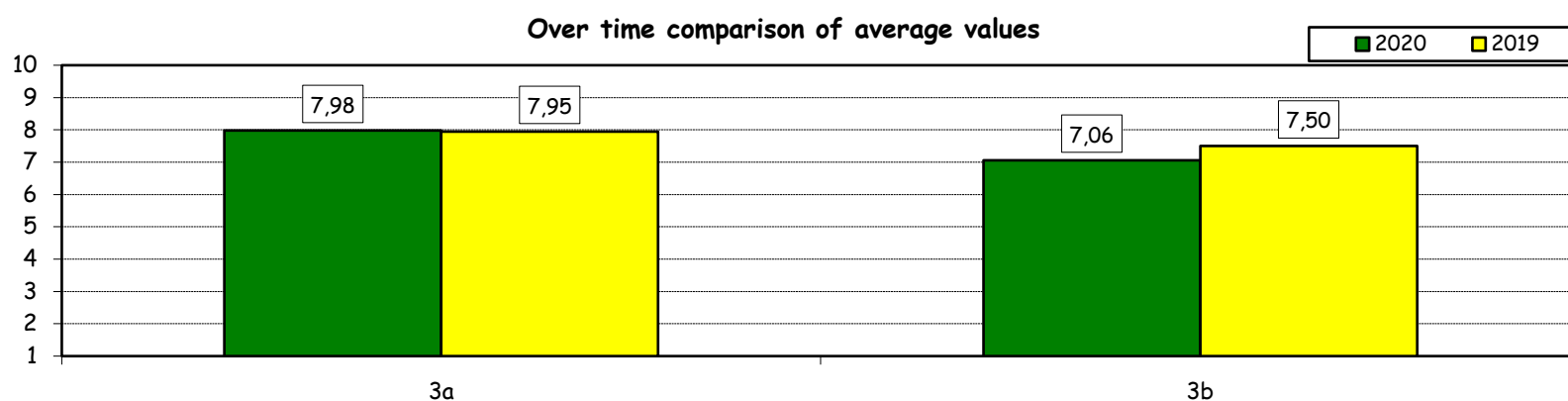
2) Do you think that the activities you took part in contributed to your cultural/educational enrichment?

	Definitely YES		More YES than NO		More NO than YES		Definitely NO		Total		NA
	a.v.	%	a.v.	%	a.v.	%	a.v.	%	a.v.	%	a.v.
A - Interdisciplinary courses	2	20,0	7	70,0	1	10,0	0	0,0	10	100,0	0
B - CSE courses	3	21,4	11	78,6	0	0,0	0	0,0	14	100,0	0
C - Cultural Activities	7	36,8	12	63,2	0	0,0	0	0,0	19	100,0	0
D - Sport activities	7	50,0	6	42,9	1	7,1	0	0,0	14	100,0	1
E - Other Campus Life activities	8	44,4	9	50,0	1	5,6	0	0,0	18	100,0	0
F - ITEC courses	1	20,0	2	40,0	2	40,0	0	0,0	5	100,0	0
G - Language Center courses	4	50,0	2	25,0	2	25,0	0	0,0	8	100,0	0



How would you evaluate:

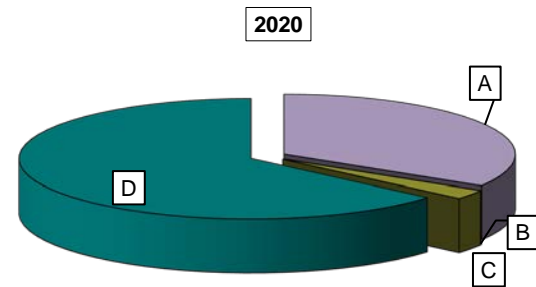
Item	Answers	Negative				Positive				Total	NA	
		1-2		3-4-5		6-7-8		9-10				
		a.v.	%	a.v.	%	a.v.	%	a.v.	%			
3a) The range and interest of programmes offered		1	2,1	2	4,2	25	52,1	20	41,7	48	100,0	13
3b) The support you received from the Campus Life Office		0	0,0	9	18,4	29	59,2	11	22,4	49	100,0	12



Experience Of Studying Abroad

1) Type of experience:

Answers	a.v.	%	
		2020	2019
A - Exchange	27	33,8%	43,5%
B - Double Degree	0	0,0%	0,0%
C - Free-Mover	2	2,5%	2,2%
D - None	51	63,8%	54,3%
Total	80	100%	100%
NA	0		

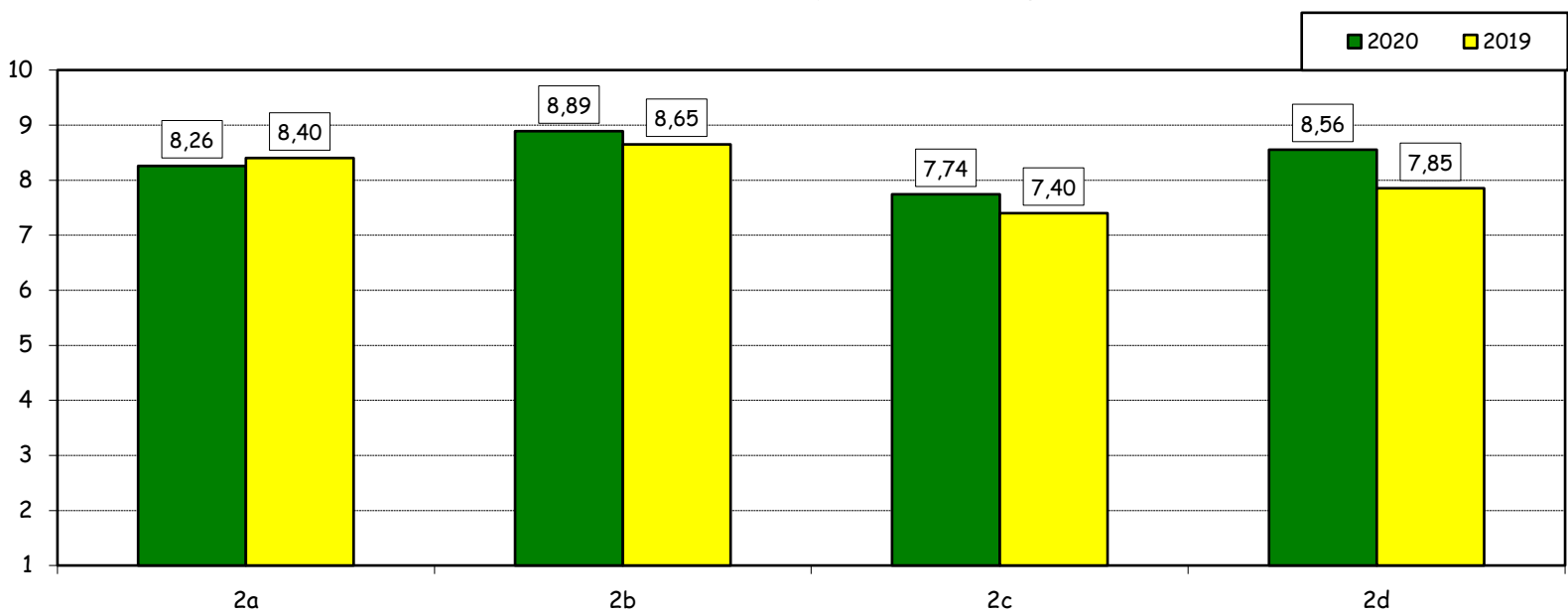


How would you evaluate:

(only A or B answers to item no.1)

Item	Answers	Negative				Positive				Total		N.A.
		1-2		3-4-5		6-7-8		9-10		a.v.	%	a.v.
		a.v.	%	a.v.	%	a.v.	%	a.v.	%			
2a) Quality and completeness of information provided through: "International Week," emails, brochures, International Relations Service web page		1	3,7	0	0,0	11	40,7	15	55,6	27	100,0	0
2b) The range and interest of programs offered.		0	0,0	0	0,0	9	33,3	18	66,7	27	100,0	0
2c) The convenience of the study abroad desk's opening hours.		1	3,7	1	3,7	13	48,1	12	44,4	27	100,0	0
2d) The support you received from Bocconi International Relations.		0	0,0	2	7,4	9	33,3	16	59,3	27	100,0	0

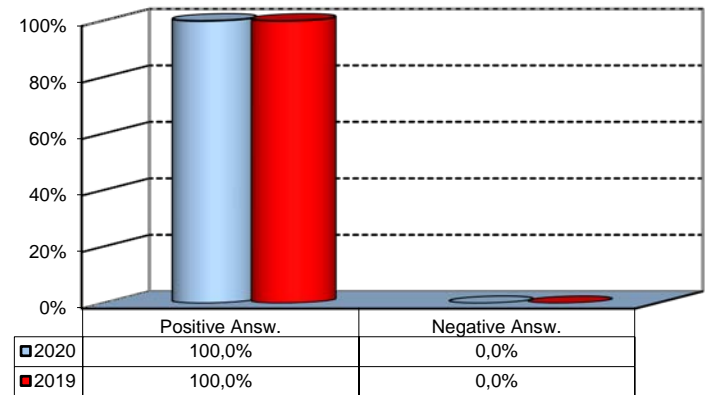
Over time comparison of average values



Experience Of Studying Abroad

3) Would you positively evaluate this experience?

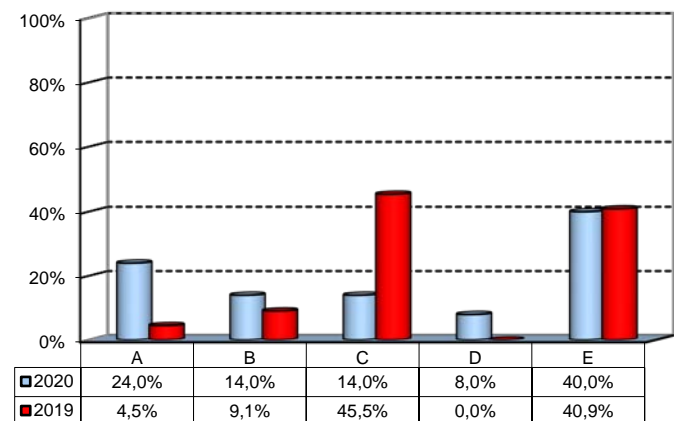
Answers	a.v.	%
A - Definitely YES	26	89,7%
B - More YES than NO	3	10,3%
C - More NO than YES	0	0,0%
D - Definitely NO	0	0,0%
Total	29	100%
NA	0	



(In case of answer "D" to item no.1)

4) Please indicate why you did not attend a period of study abroad (select all relevant reasons):

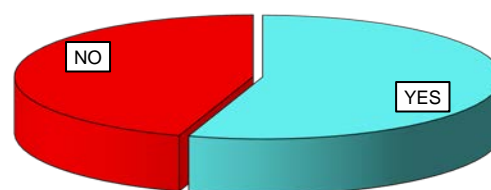
Answers	a.v.	%
A-Lack of interest in this kind of experience	12	24,0%
B-Absence of the requirements needed for participation in the program selected	7	14,0%
C-Rejection of your application	7	14,0%
D-Lack of time during the period of study	4	8,0%
E-Other (personal, family, organizational reasons, etc.)	20	40,0%
Total	50	100%
NA	1	



Internship Activities

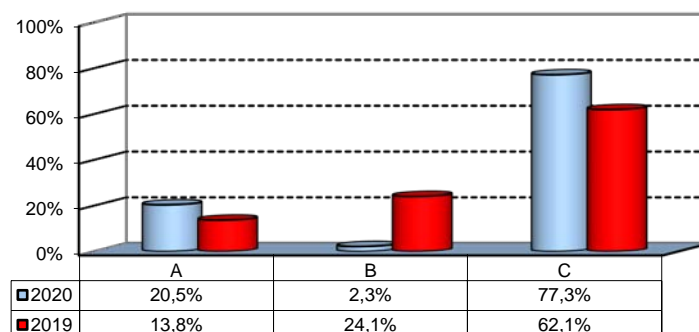
1) Did you attend an internship recognized by the Bachelor program?

	a.v.	2020	2019
YES	44	55,0%	63,0%
NO	36	45,0%	37,0%
Total	80	100%	100%
NA	0		



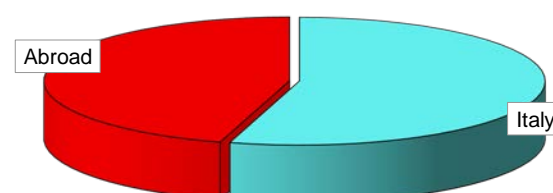
2) How did you find the internship?

	a.v.	%
A - Through the University's Placement Services*	9	20,5%
B - Through the faculty members of the degree program	1	2,3%
C - Through autonomous way then recognized by the degree program	34	77,3%
Total	44	100%
NA	0	



3) Where did you do the internship recognised by the Bachelor Program?

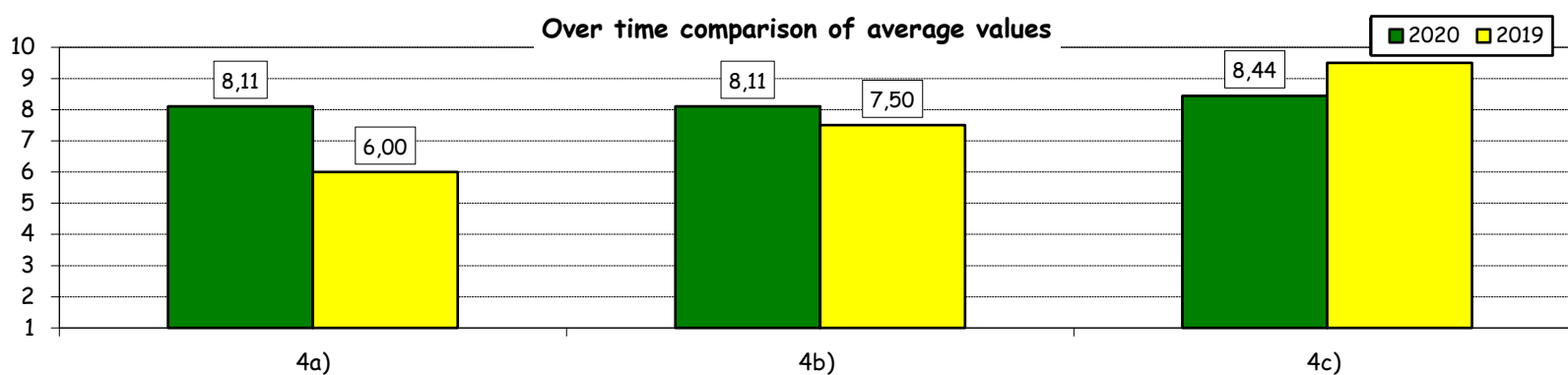
	a.v.	2020	2019
Italy	24	54,5%	48,3%
Abroad	20	45,5%	51,7%
Total	44	100%	100%
NA	0		



How would you evaluate:

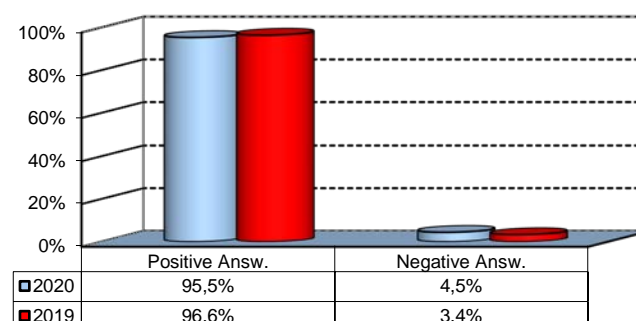
(In case of answer "A" to item no.2)

Item	Answers	Negative				Positive				Total		N.A.
		1-2		3-4-5		6-7-8		9-10		a.v.	%	a.v.
		a.v.	%	a.v.	%	a.v.	%	a.v.	%	a.v.	%	a.v.
4a) The convenience of the internship front desk's opening hours.		1	11,1	0	0,0	3	33,3	5	55,6	9	100,0	0
4b) The number and variety of opportunities offered		0	0,0	2	22,2	2	22,2	5	55,6	9	100,0	0
4c) The support you received from the Internship Office.		1	11,1	0	0,0	2	22,2	6	66,7	9	100,0	0



5) Would you positively evaluate this experience?

	a.v.	%
A - Definitely YES	31	70,5%
B - More YES than NO	11	25,0%
C - More NO than YES	2	4,5%
D - Definitely NO	0	0,0%
Total	44	100%
NA	0	



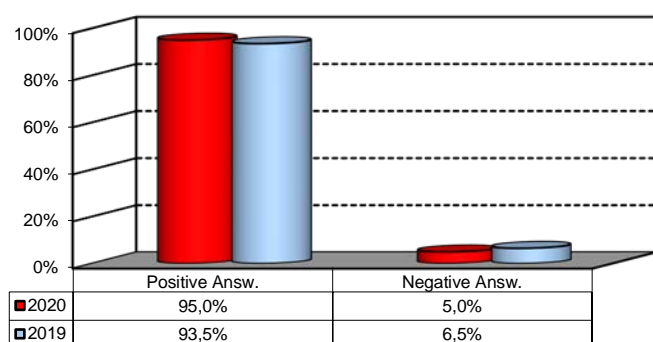
*JobGate, Internship Programs, Companies' meetings and presentations, Bocconi&Jobs, Placement Library's services, Curricular Internship Special, websites reported in the section 'Lavoro.net'

General satisfaction and short-term plans

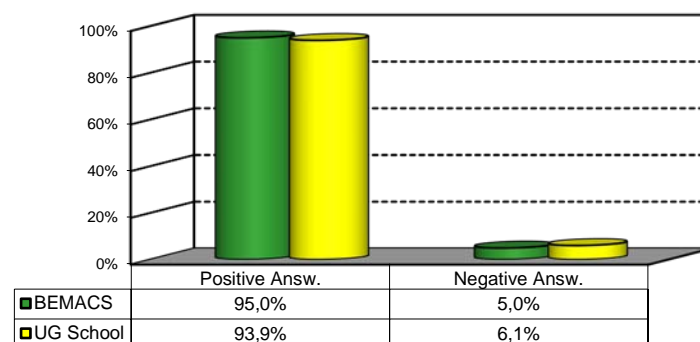
1) Are you satisfied overall with the study program you attended?

Answers	Italian School career		Int.nal School Career		Total	
	a.v.	%	a.v.	%	a.v.	%
A - Definitely YES	24	44,4%	8	30,8%	32	40,0%
B - More YES than NO	29	53,7%	15	57,7%	44	55,0%
C - More NO than YES	0	0,0%	2	7,7%	2	2,5%
D - Definitely NO	1	1,9%	1	3,8%	2	2,5%
Total	54	100%	26	100%	80	100%
NA	0		0		0	

Over time comparison



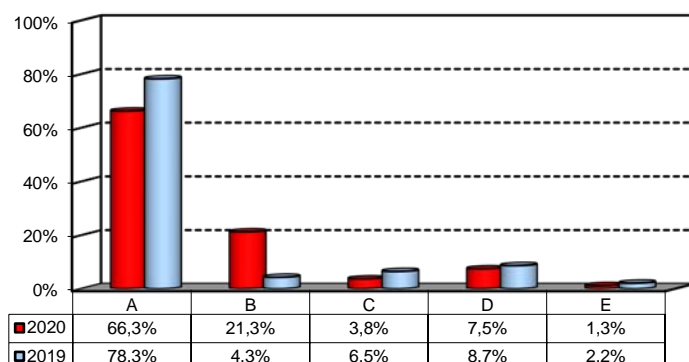
Comparison with the overall School data



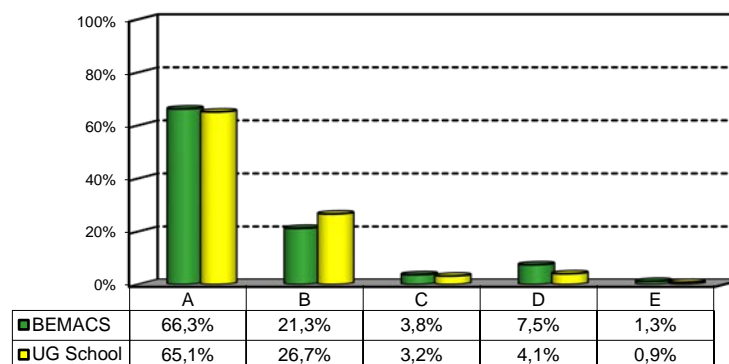
2a) If you could go back in time, would you enroll in the University again?

Answers	Italian School career		Int.nal School Career		Total	
	a.v.	%	a.v.	%	a.v.	%
A - YES, in the same Bachelor Program at this University	36	66,7%	17	65,4%	53	66,3%
B - YES, in another Program at this University	11	20,4%	6	23,1%	17	21,3%
C - YES, in the same Program but at another University	3	5,6%	0	0,0%	3	3,8%
D - YES, in another Program at another University	3	5,6%	3	11,5%	6	7,5%
E - NO, I would not enrol in university anymore	1	1,9%	0	0,0%	1	1,3%
Total	54	100%	26	100%	80	100%
NA	0		0		0	

Over time comparison



Comparison with the overall School data



General satisfaction and short-term plans

(In case of answer "B" to item no.2a)

2b) Which program would you enroll in at this University?

Answers	Italian School career		Int.nal School Career		Total	
	v.a.	%	v.a.	%	v.a.	%
BEMACS	0	0,0%	0	0,0%	0	0,0%
BIEF	2	20,0%	2	50,0%	4	28,6%
BIEM	6	60,0%	2	50,0%	8	57,1%
BIG	1	10,0%	0	0,0%	1	7,1%
CLEACC	0	0,0%	0	0,0%	0	0,0%
CLEAM	1	10,0%	0	0,0%	1	7,1%
CLEF	0	0,0%	0	0,0%	0	0,0%
CLES-BESS	0	0,0%	0	0,0%	0	0,0%
CLMG	0	0,0%	0	0,0%	0	0,0%
WBB	0	0,0%	0	0,0%	0	0,0%
Total	10	100%	4	100%	14	100%

(In case of answer "C", "D" or "E" to item no.2a)

2c) Why would you make a different choice?

Answers	Italian School career		Int.nal School Career		Total		
	v.a.	%	v.a.	%	2020		2019
					v.a.	%	%
A - My interest has changed during this time / I discovered that I have different attitudes	1	25,0%	3	100,0%	4	57,1%	25,0%
B - The Bachelor program did not mirror my expectations	1	25,0%	0	0,0%	1	14,3%	37,5%
C- I have not been admitted to the Bachelor Program selected as first-choice.	0	0,0%	0	0,0%	0	0,0%	0,0%
D- The campus and its facilities and services were not up to my expectations	0	0,0%	0	0,0%	0	0,0%	0,0%
E- I would have preferred to attend the same Bachelor Program but taught in English.	0	0,0%	0	0,0%	0	0,0%	0,0%
F - Other reasons	2	50,0%	0	0,0%	2	28,6%	37,5%
Total	4	100%	3	100%	7	100%	100%
NA	3		0		3		

F- Other reasons:

Non possibile proseguire magistrale in AI in italia

While I was taking part in my BSc course (BEMACS), the university decided to start a new BSc course called ".Mathematical and Computing Sciences for Artificial Intelligence"., which I found out to be closer to my interests.

General satisfaction and short-term plans

3) In the near future do you intend to:

	Italian School career		Int.nal School Career		Total		2019 %
	a.v.	%	a.v.	%	2020 a.v.	2020 %	
A- To go on with university studies at Bocconi (Master of Science, one-year Master of Science)	26	53,1%	6	26,1%	32	44,4%	29,5%
B-To go on with university studies at another Italian University	1	2,0%	1	4,3%	2	2,8%	4,5%
C- To go on with university studies abroad	20	40,8%	8	34,8%	28	38,9%	45,5%
D - To immediately look for a job	0	0,0%	3	13,0%	3	4,2%	6,8%
E - To accept a job proposal received	1	2,0%	5	21,7%	6	8,3%	13,6%
F - To continue to do the job started during this degree program	1	2,0%	0	0,0%	1	1,4%	0,0%
Total	49	100%	23	100%	72	100%	100%
NA	5		3		8		

4) If you intend to continue your university studies at another University (in Italy or abroad), what are the reasons for your choice? (multiple answers admitted)

	Italian School career		Int.nal School Career		Total		2019 %
	a.v.	%	a.v.	%	2020 a.v.	2020 %	
A - I would like to attend a more prestigious university	4	11,1%	5	19,2%	9	14,5%	15,0%
B - I would like to build a strong international curriculum	18	50,0%	8	30,8%	26	41,9%	40,0%
C- I can not bear the cost of studies (tuition fees and cost of living)	2	5,6%	3	11,5%	5	8,1%	0,0%
D - I can not bear the cost of studies (tuition fees and cost of living)	2	5,6%	1	3,8%	3	4,8%	10,0%
E- The administrative services are not sufficiently efficient	0	0,0%	2	7,7%	2	3,2%	0,0%
F - I think that the contents of Bocconi's MSc programs do not differ much from those of undergraduate programs	6	16,7%	5	19,2%	11	17,7%	20,0%
G - Other reasons	4	11,1%	2	7,7%	6	9,7%	15,0%
Total	36	100%	26	100%	62	100%	100%
NA	0		0		0		

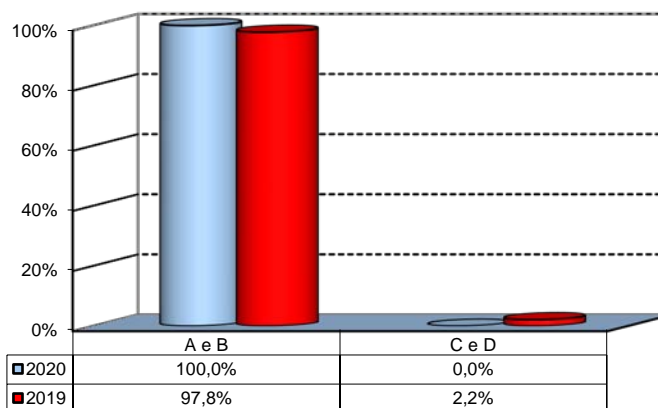
G - Other reasons:

Abroad working and studying is doable together
Corsi totalmente online e part-time
esperienza estera non legata alla media
I believe MSc Data Science in Business Analytics (where I would like to continue my studies) should be more rigorous from a computational perspective and offer more possibilities to diversify the study plan. For all the ones coming from BEMACS, the first year may be repetitive. But overall, I appreciate the educational offer.
I have not been accepted to the program I like
I wanted to attend more technical university for my master program and gain new experience in a different environment
If Im not accepted at Msc programs in Bocconi

Infrastructure: Classrooms, Library And Facilities

1) What is your opinion about the classrooms where lessons and other teaching activities have been held?*

Answers	a.v.	%
A - Always or nearly always adequate	49	62,0%
B - Often adequate	30	38,0%
C - Rarely adequate	0	0,0%
D - Never adequate	0	0,0%
E - I did not use them	0	0,0%
Total	79	100%
NA	1	

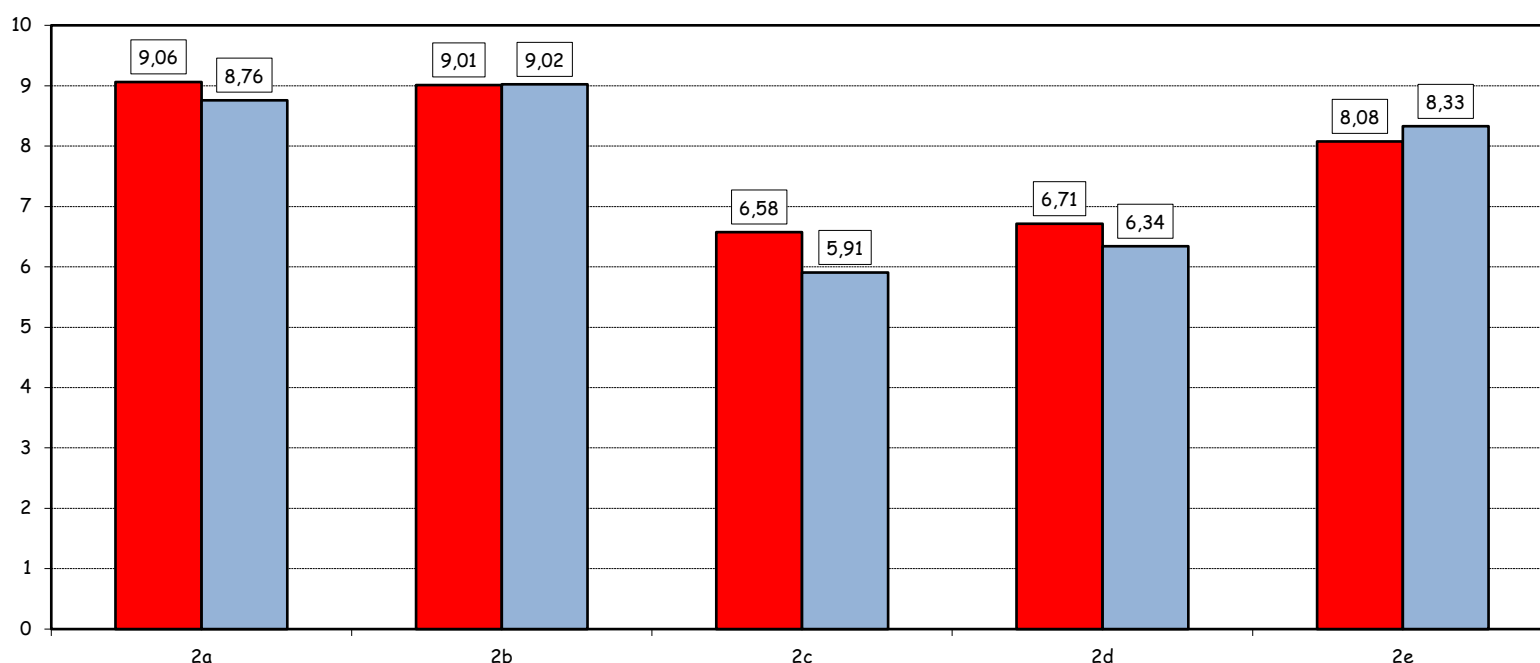


2) How would you evaluate:

Item	Answers	Negative				Positive				Total	NA	N.R.	
		1-2		3-4-5		6-7-8		9-10					
		a.v.	%	a.v.	%	a.v.	%	a.v.	%				
a) The adequacy of the audio and multimedia systems (e.g. instructor's computer, projectors, video players) installed in the classrooms		0	0,0	0	0,0	24	30,4	55	69,6	79	100,0		1
b) The cleanliness of classrooms and of other common areas on campus (corridors, halls, study rooms)		0	0,0	0	0,0	25	32,1	53	67,9	78	100,0		2
c) The adequacy of the amount of areas/seats reserved to individual study in the University Library		9	11,5	16	20,5	28	35,9	25	32,1	78	100,0	1	1
d) The adequacy of the amount of areas/seats reserved to individual study in other buildings on campus		6	7,8	14	18,2	35	45,5	22	28,6	77	100,0	0	3
e) The clarity and adequacy of the signage system on campus		1	1,3	6	7,8	32	41,6	38	49,4	77	100,0		3

Over time comparison of average values

■ 2020 ■ 2019

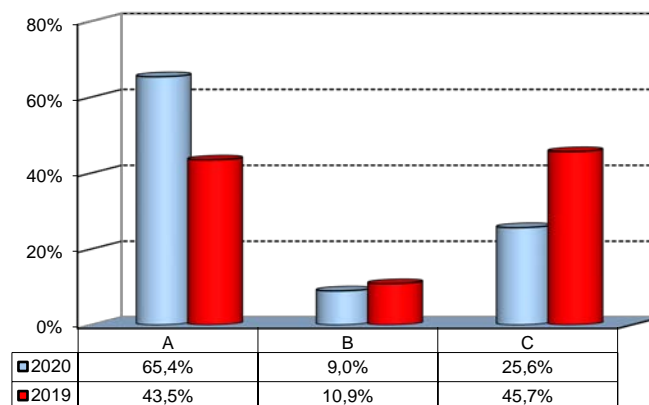


(*): the percentage shown on the graphs is calculated by excluding the responses of those who declare that they have not used the service.

Infrastructure: Classrooms, Library And Facilities

3) What is your overall opinion on the PC Labs and IT facilities provided by the University?

Answers	a.v.	%
A- Adequate in number	51	65,4%
B- Inadequate in number	7	9,0%
C- Never used	20	25,6%
Total	78	100%
NA	2	

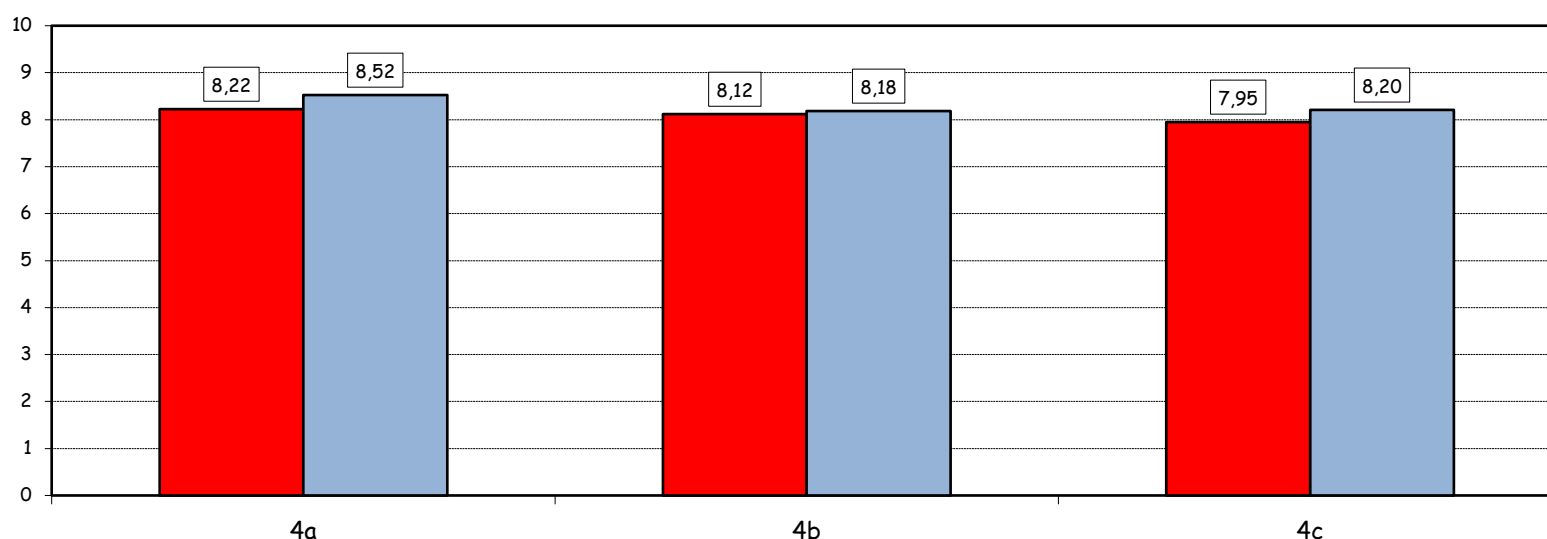


4) How would you evaluate:

Answers	Negative				Positive				Total		NA
	1-2		3-4-5		6-7-8		9-10				
	a.v.	%	a.v.	%	a.v.	%	a.v.	%	a.v.	%	
a) The availability of technical staff supporting students (Tutors) in PC Labs^	1	1,9	3	5,6	21	38,9	29	53,7	54	100,0	4
b) The convenience of the PC Labs' opening hours^	1	1,9	2	3,8	25	48,1	24	46,2	52	100,0	6
c) The level of accessibility and usability of the University's IT services (Internet access points, Punto Blu, Virtual Punto Blu, wireless connection)	1	1,3	5	6,6	37	48,7	33	43,4	76	100,0	4

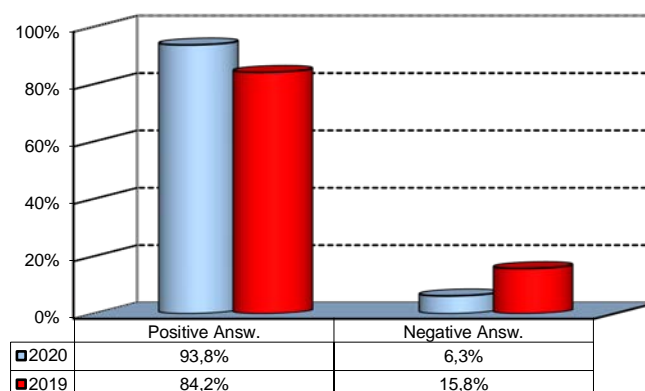
Over time comparison of average values

■ 2020 ■ 2019



5) What is your overall opinion on the Library's services, such as support for individual study?*

Answers	a.v.	%
A - Very Positive	24	30,8%
B - Quite positive	36	46,2%
C - Quite negative	4	5,1%
D - Very Negative	0	0,0%
E - Never used	14	17,9%
Total	78	100%
NA	2	



(^): Only in case of answer "A" or "B" to item no.3

(*): the percentage shown on the graphs is calculated by excluding the responses of those who declare that they have not used the service.