

EVALUATION OF THE DEGREE PROGRAM AND THE UNIVERSITY EXPERIENCE

BACHELOR IN INTERNATIONAL POLITICS AND GOVERNMENT

N° QUESTIONNAIRES PROCESSED: 86

N° OF GRADUATE STUDENTS: 95

RESPONSE RATE: 90,5%



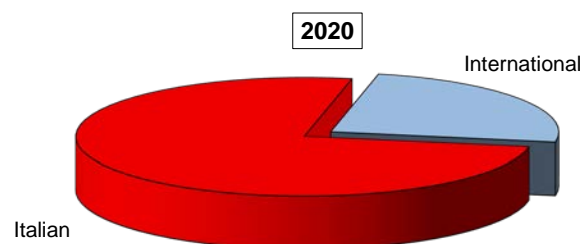
EVALUATION OF STUDENT EXPERIENCE

Bachelor of Science in International Politics and Government

General information

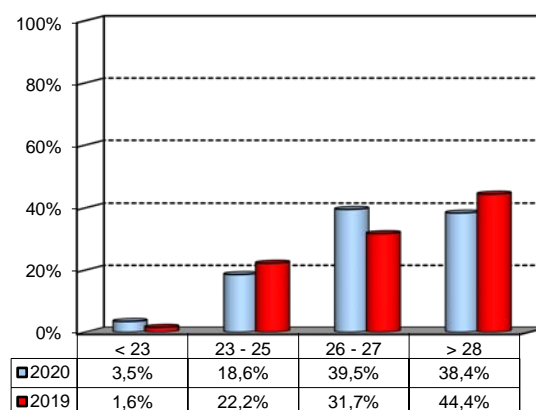
School Career

Answers	a.v.	%	
		2020	2019
Italian	65	75,6%	65,1%
International	21	24,4%	34,9%
Total	86	100%	100%
NA	0		



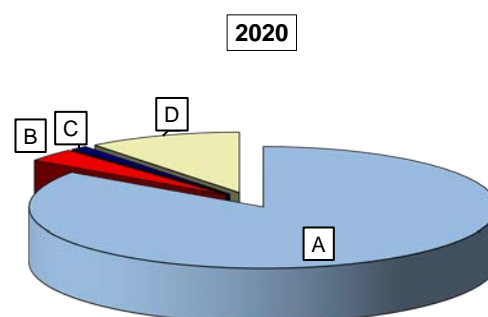
Average mark of the exams passed: (approximate average expressed in 30/30)

Answers	a.v.	%
< 23	3	3,5%
23 - 25	16	18,6%
26 - 27	34	39,5%
> 28	33	38,4%
Total	86	100%
NA	0	



How many of the courses included in your curriculum did you attend regularly?

Answers	a.v.	%	
		2020	2019
A - More than 75%	72	84,7%	82,5%
B - Between 50 and 75%	3	3,5%	12,7%
C - Between 25 and 50%	1	1,2%	4,8%
D - Less than 25%	9	10,6%	0,0%
Total	85	100%	100%
NA	1		

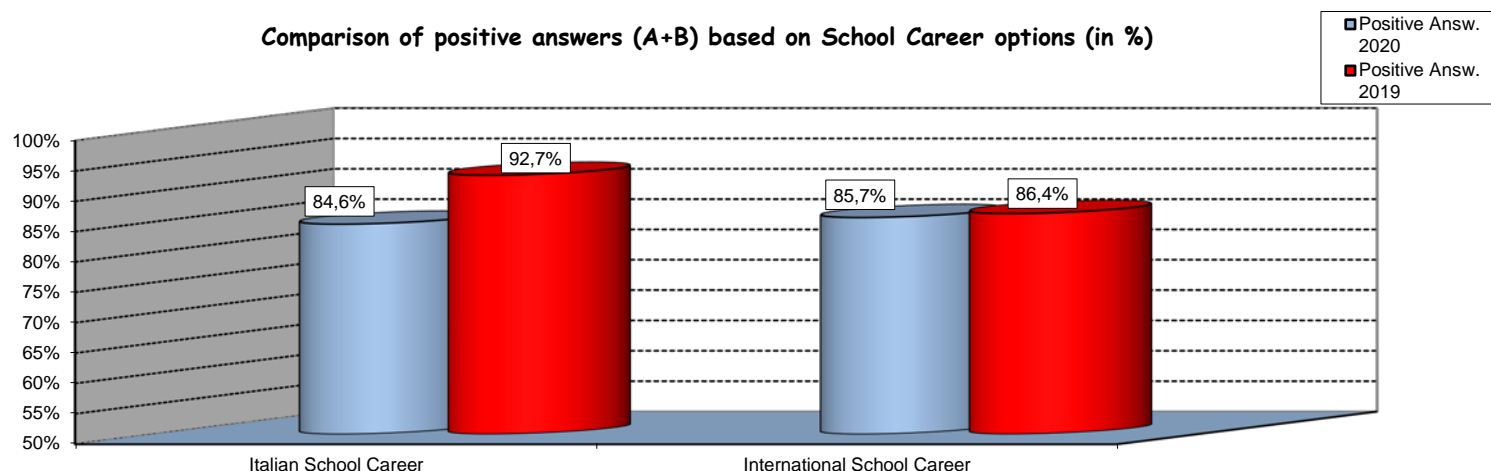


Study experience

1) Was the knowledge acquired during secondary school adequate to undertake your Bachelor program?

Answers	Italian School Career		International School Career		Total	
	a.v.	%	a.v.	%	a.v.	%
A - Definitely YES	29	44,6%	10	47,6%	39	45,3%
B - More YES than NO	26	40,0%	8	38,1%	34	39,5%
C - More NO than YES	10	15,4%	3	14,3%	13	15,1%
D - Definitely NO	0	0,0%	0	0,0%	0	0,0%
Total	65	100%	21	100%	86	100%
NA	0		0		0	

Comparison of positive answers (A+B) based on School Career options (in %)



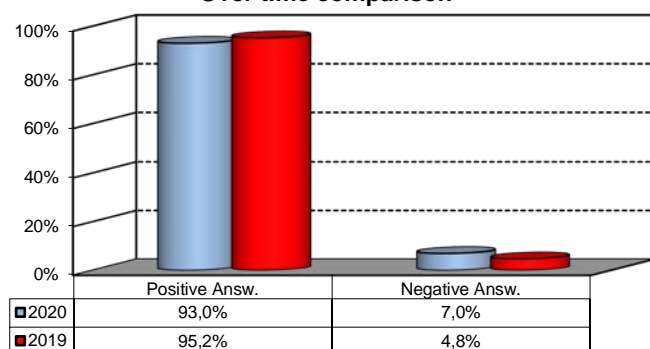
2) if you answered " More NO than YES" or "Definitely NO", indicate the subject or the subjects for which your previous knowledge revealed to be insufficient:

	a.v.	%
QUANTITATIVE METHODS FOR SOCIAL SCIENCES (MODULE I - MATHEMATICS)	11	32,4%
INTERNATIONAL RELATIONS	3	8,8%
ACCOUNTING AND FINANCIAL STATEMENT ANALYSIS	3	8,8%
Altro	17	50,0%
Total	34	100%

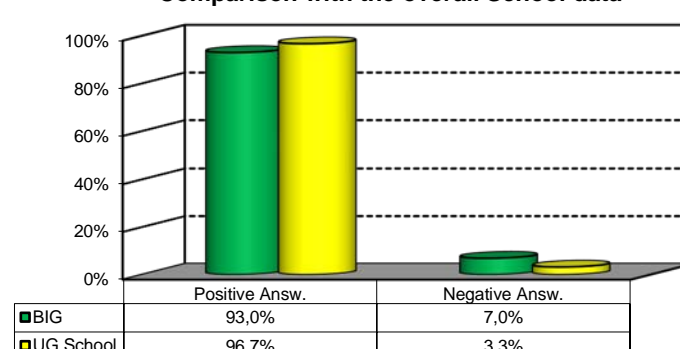
3) On the whole, do you appreciate the qualifications you acquired at the end of the Bachelor program at Bocconi?

Aswers	Italian school Career		Int.nal School Career		Total	
	v.a.	%	v.a.	%	v.a.	%
A - Definitely YES	27	41,5%	10	47,6%	37	43,0%
B - More YES than NO	34	52,3%	9	42,9%	43	50,0%
C - More NO than YES	2	3,1%	2	9,5%	4	4,7%
D - Definitely NO	2	3,1%	0	0,0%	2	2,3%
Total	65	100%	21	100%	86	100%
NA	0		0		0	

Over time comparison



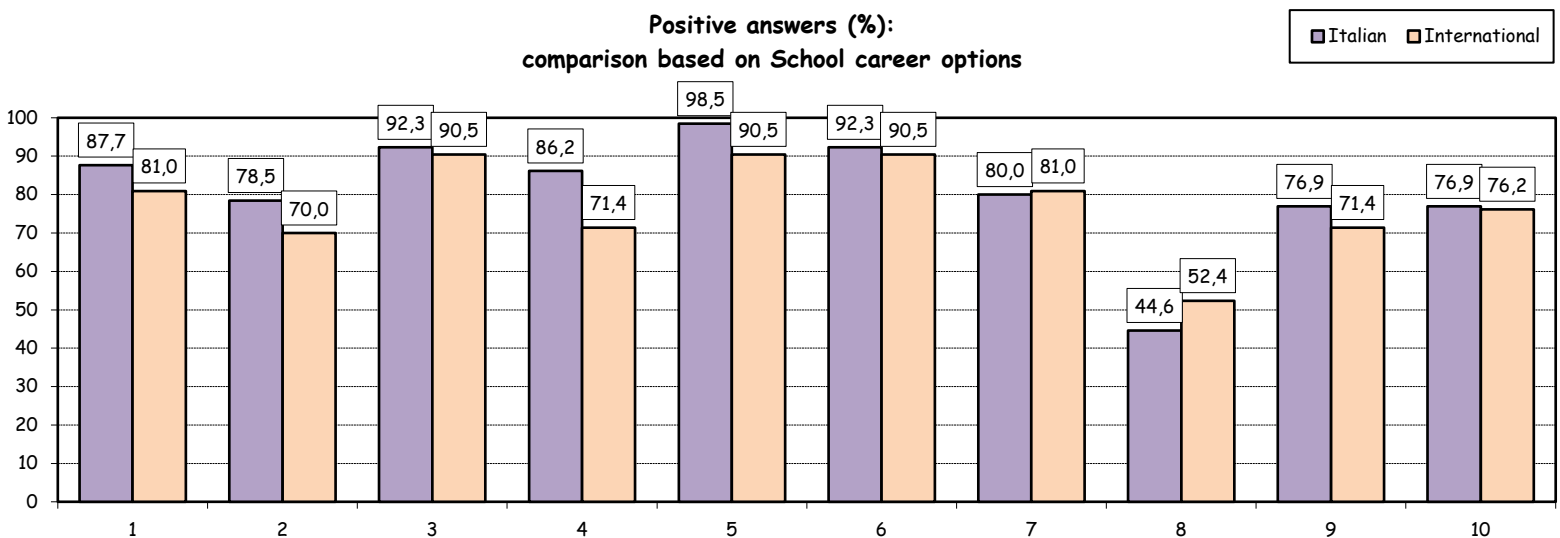
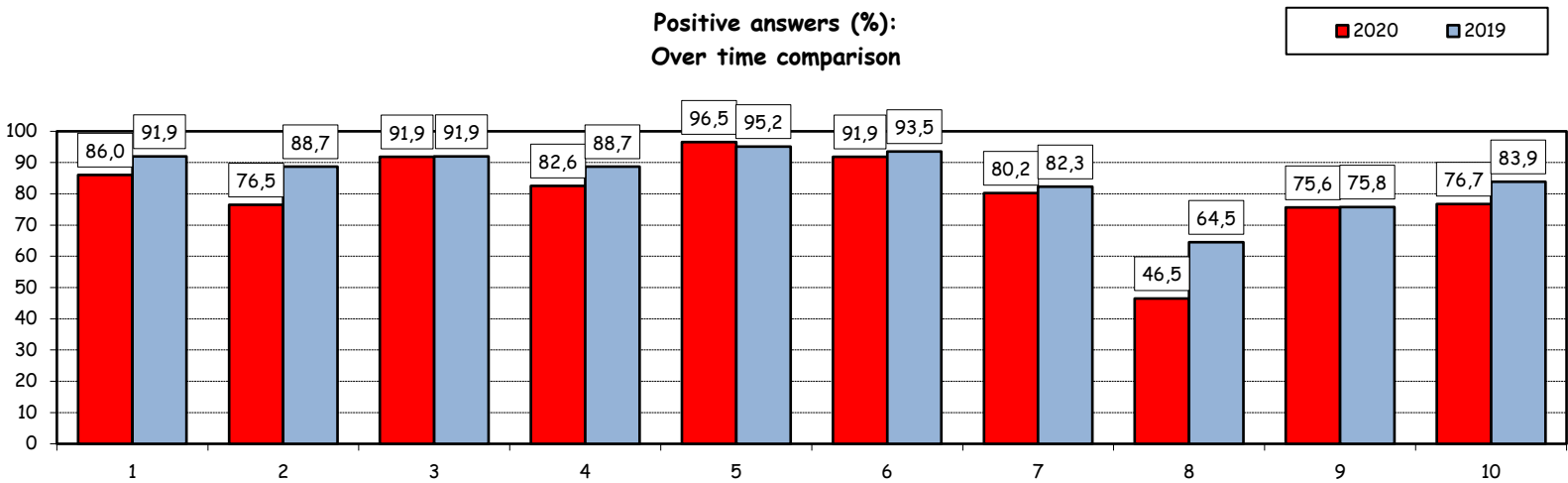
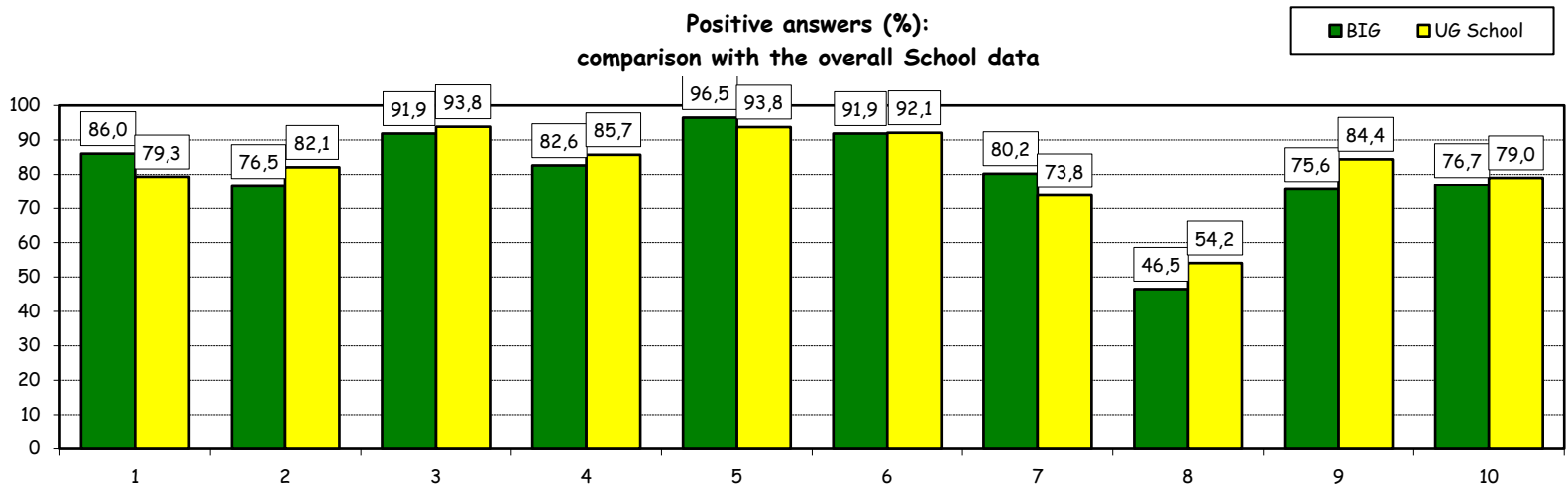
Comparison with the overall School data



Study experience

4) Do you think that your course of study at Bocconi has contributed to the development of the following skills?

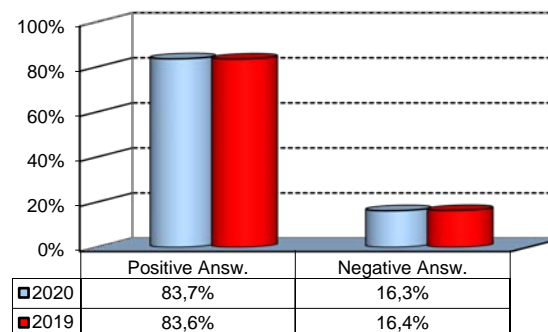
Soft Skill	Item	Definitely YES		More YES than NO		More NO than YES		Definitely NO		Total		n.a.
		a.v.	%	a.v.	%	a.v.	%	a.v.	%	a.v.	%	a.v.
1	Ability to work on a team	35	40,7	39	45,3	8	9,3	4	4,7	86	100,0	0
2	Interpersonal skills	27	31,8	38	44,7	19	22,4	1	1,2	85	100,0	1
3	Organizational skills	38	44,2	41	47,7	6	7,0	1	1,2	86	100,0	0
4	Critical thinking skills	29	33,7	42	48,8	10	11,6	5	5,8	86	100,0	0
5	Ability to analyze and select information	51	59,3	32	37,2	3	3,5	0	0,0	86	100,0	0
6	Problem-solving ability	35	40,7	44	51,2	7	8,1	0	0,0	86	100,0	0
7	Written communication skills	34	39,5	35	40,7	15	17,4	2	2,3	86	100,0	0
8	Verbal communication skills	10	11,6	30	34,9	36	41,9	10	11,6	86	100,0	0
9	Ability to cope with stress	35	40,7	30	34,9	15	17,4	6	7,0	86	100,0	0
10	Computer Skills	25	29,1	41	47,7	17	19,8	3	3,5	86	100,0	0



Study experience

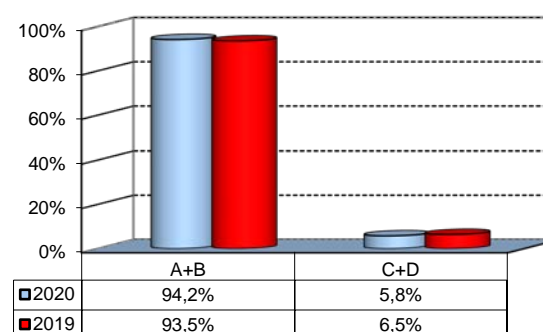
5) Do you think that the courses in your curriculum were adequately coordinated with each other?

	a.v.	%
A - Definitely YES	8	9,3%
B - More YES than NO	64	74,4%
C - More NO than YES	13	15,1%
D - Definitely NO	1	1,2%
Total	86	100%
NA	0	



6a) Do you think that the overall study load was compatible with the length of the program?

	a.v.	%
A - Definitely YES	33	38,4%
B - More YES than NO	48	55,8%
C - More NO than YES	3	3,5%
D - Definitely NO	2	2,3%
Total	86	100%
NA	0	



6b) Specifically, do you believe that the study load was excessive or insufficient?

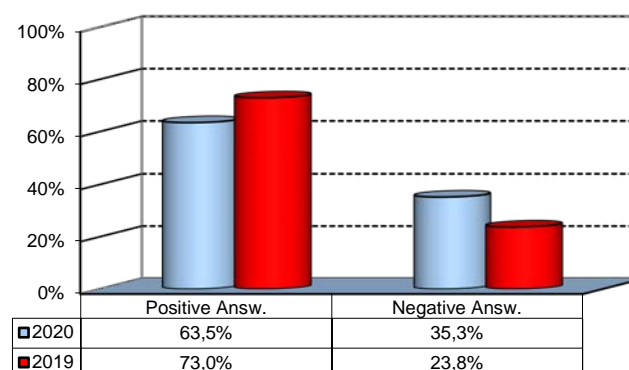
(In case of answer "C" to item no.6a)

	a.v.	% 2020	% 2019
Excessive	2	50,0%	0,0%
Insufficient	2	50,0%	0,0%
Total	4	100%	0%
NA	1		

Final Report

1) Do you think that the supervision and assistance for preparing for your final report (internship report, final paper or other) were adequate?

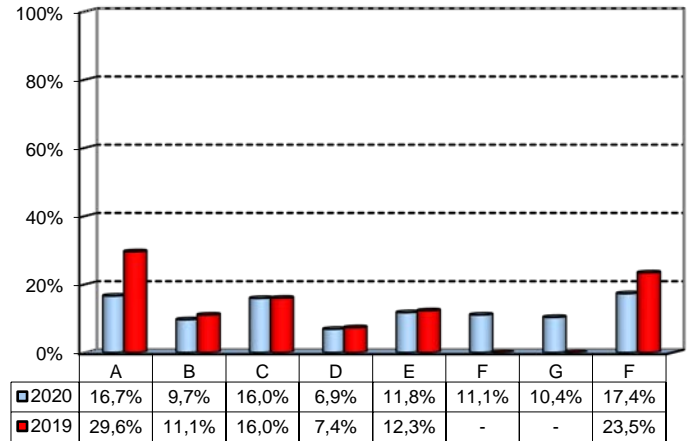
	a.v.	%
A - Definitely YES	24	28,2%
B - More YES than NO	30	35,3%
C - More NO than YES	22	25,9%
D - Definitely NO	8	9,4%
E - Supervision was not expected	1	1,2%
Total	85	100%
NA	1	



Extracurricular Activities

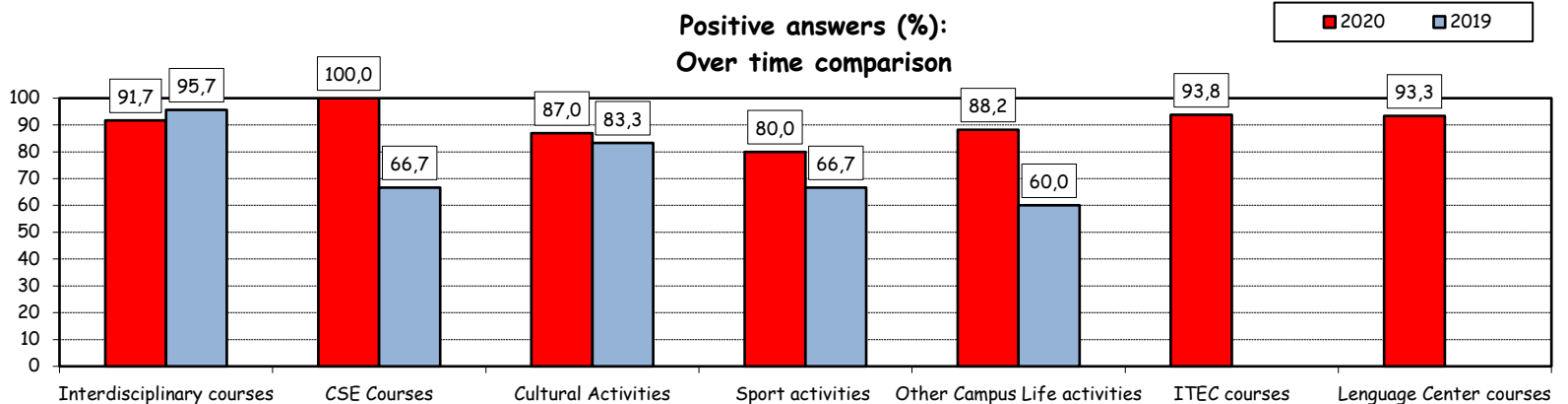
1) Which of the following extracurricular activities did you attend during the Bachelor Program?
(multiple answers admitted)

	a.v.	%
A - Interdisciplinary courses ("Sapere a tutto campo")	24	16,7%
B - Counseling and Self-Empowerment courses (CSE)	14	9,7%
C - Cultural Activities (visit museums, concerts, theatre and cinema, various issues)	23	16,0%
D - Sport activities	10	6,9%
E - Other Campus Life activities	17	11,8%
F - IT Education Center courses (ITEC)	16	11,1%
G - Language Center courses	15	10,4%
H - None	25	17,4%
Total	144	100%
NA	0	



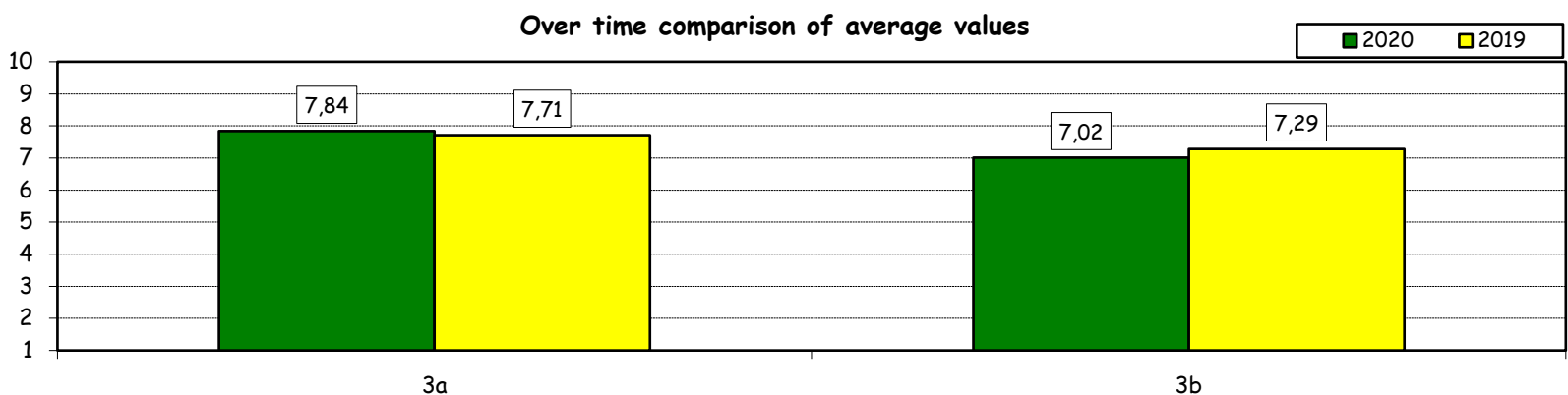
2) Do you think that the activities you took part in contributed to your cultural/educational enrichment?

	Definitely YES		More YES than NO		More NO than YES		Definitely NO		Total		NA
	a.v.	%	a.v.	%	a.v.	%	a.v.	%	a.v.	%	a.v.
A - Interdisciplinary courses	12	50,0	10	41,7	2	8,3	0	0,0	24	100,0	0
B - CSE courses	8	57,1	6	42,9	0	0,0	0	0,0	14	100,0	0
C - Cultural Activities	7	30,4	13	56,5	3	13,0	0	0,0	23	100,0	0
D - Sport activities	3	30,0	5	50,0	1	10,0	1	10,0	10	100,0	0
E - Other Campus Life activities	9	52,9	6	35,3	1	5,9	1	5,9	17	100,0	0
F - ITEC courses	10	62,5	5	31,3	1	6,3	0	0,0	16	100,0	0
G - Language Center courses	5	33,3	9	60,0	1	6,7	0	0,0	15	100,0	0



How would you evaluate:

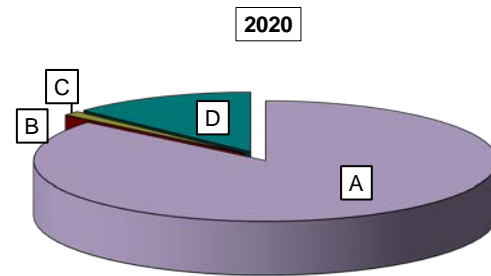
Item	Answers	Negative				Positive				Total	NA	
		1-2		3-4-5		6-7-8		9-10				
		a.v.	%	a.v.	%	a.v.	%	a.v.	%			
3a) The range and interest of programmes offered		0	0,0	4	6,6	36	59,0	21	34,4	61	100,0	0
3b) The support you received from the Campus Life Office		2	3,3	13	21,3	31	50,8	15	24,6	61	100,0	0



Experience Of Studying Abroad

1) Type of experience:

Answers	a.v.	%	
		2020	2019
A - Exchange	74	86,0%	90,5%
B - Double Degree	0	0,0%	0,0%
C - Free-Mover	1	1,2%	0,0%
D - None	11	12,8%	9,5%
Total	86	100%	100%
NA	0		

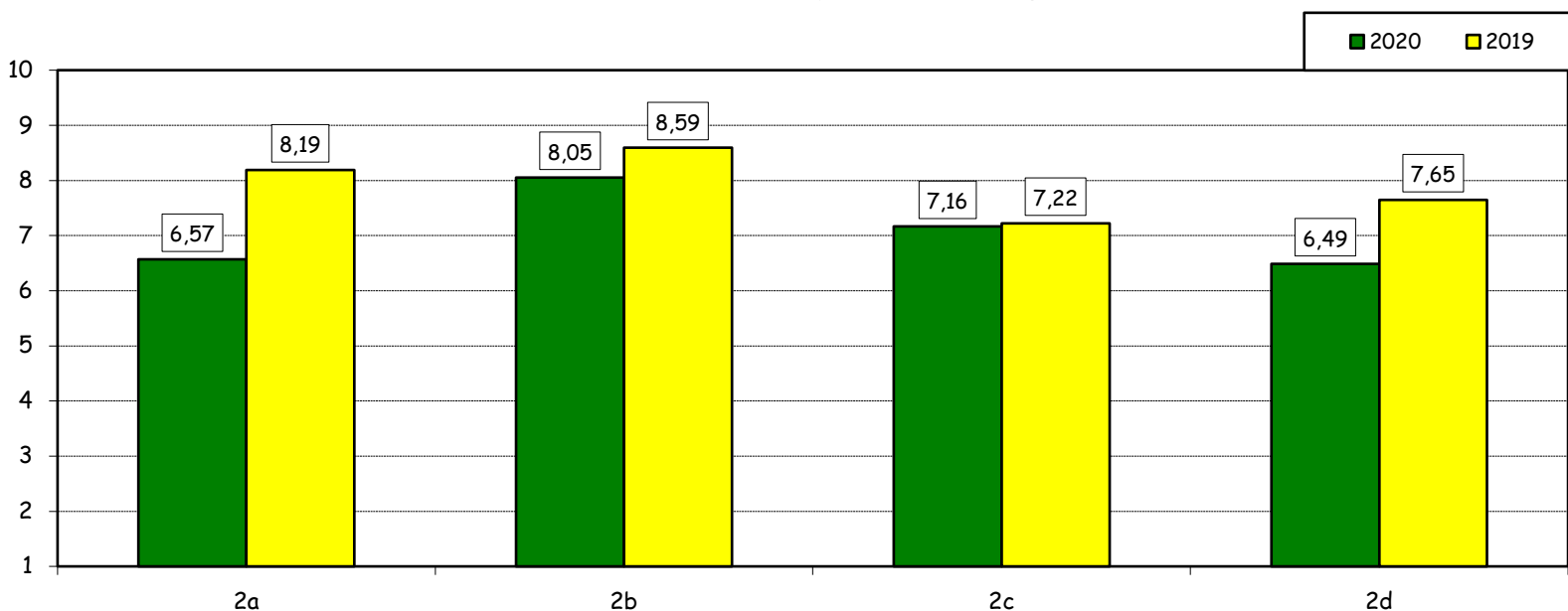


How would you evaluate:

(only A or B answers to item no.1)

Item	Answers	Negative				Positive				Total		N.A.
		1-2		3-4-5		6-7-8		9-10		a.v.	%	a.v.
		a.v.	%	a.v.	%	a.v.	%	a.v.	%			
2a) Quality and completeness of information provided through: "International Week," emails, brochures, International Relations Service web page		9	12,2	7	9,5	43	58,1	15	20,3	74	100,0	0
2b) The range and interest of programs offered.		2	2,7	3	4,1	32	43,2	37	50,0	74	100,0	0
2c) The convenience of the study abroad desk's opening hours.		5	6,8	4	5,5	45	61,6	19	26,0	73	100,0	1
2d) The support you received from Bocconi International Relations.		10	13,5	12	16,2	33	44,6	19	25,7	74	100,0	0

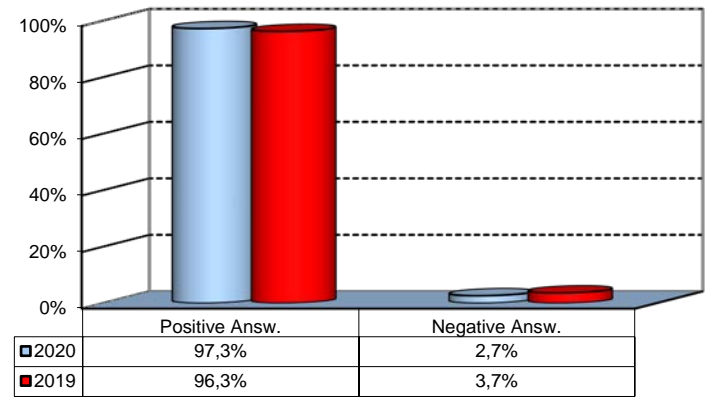
Over time comparison of average values



Experience Of Studying Abroad

3) Would you positively evaluate this experience?

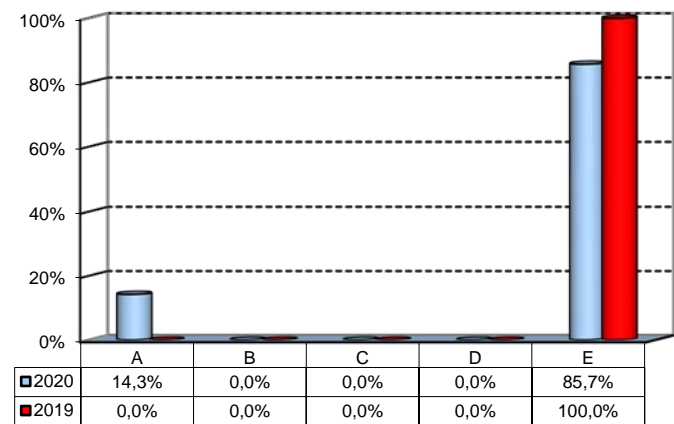
Answers	a.v.	%
A - Definitely YES	44	59,5%
B - More YES than NO	28	37,8%
C - More NO than YES	1	1,4%
D - Definitely NO	1	1,4%
Total	74	100%
NA	1	



(In case of answer "D" to item no.1)

4) Please indicate why you did not attend a period of study abroad (select all relevant reasons):

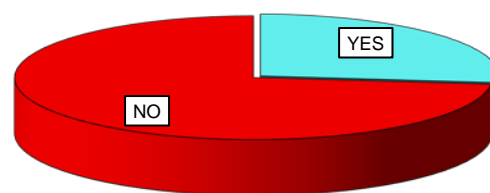
Answers	a.v.	%
A-Lack of interest in this kind of experience	1	14,3%
B-Absence of the requirements needed for participation in the program selected	0	0,0%
C-Rejection of your application	0	0,0%
D-Lack of time during the period of study	0	0,0%
E-Other (personal, family, organizational reasons, etc.)	6	85,7%
Total	7	100%
NA	4	



Internship Activities

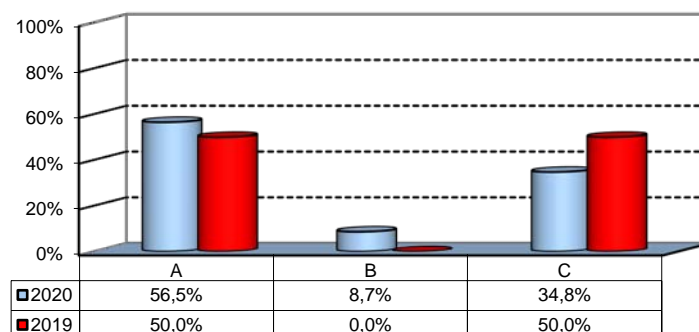
1) Did you attend an internship recognized by the Bachelor program?

	a.v.	2020	2019
YES	23	26,7%	29,0%
NO	63	73,3%	71,0%
Total	86	100%	100%
NA	0		



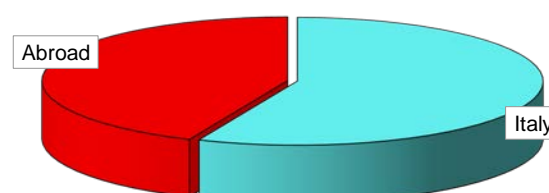
2) How did you find the internship?

	a.v.	%
A - Through the University's Placement Services*	13	56,5%
B - Through the faculty members of the degree program	2	8,7%
C - Through autonomous way then recognized by the degree program	8	34,8%
Total	23	100%
NA	0	



3) Where did you do the internship recognised by the Bachelor Program?

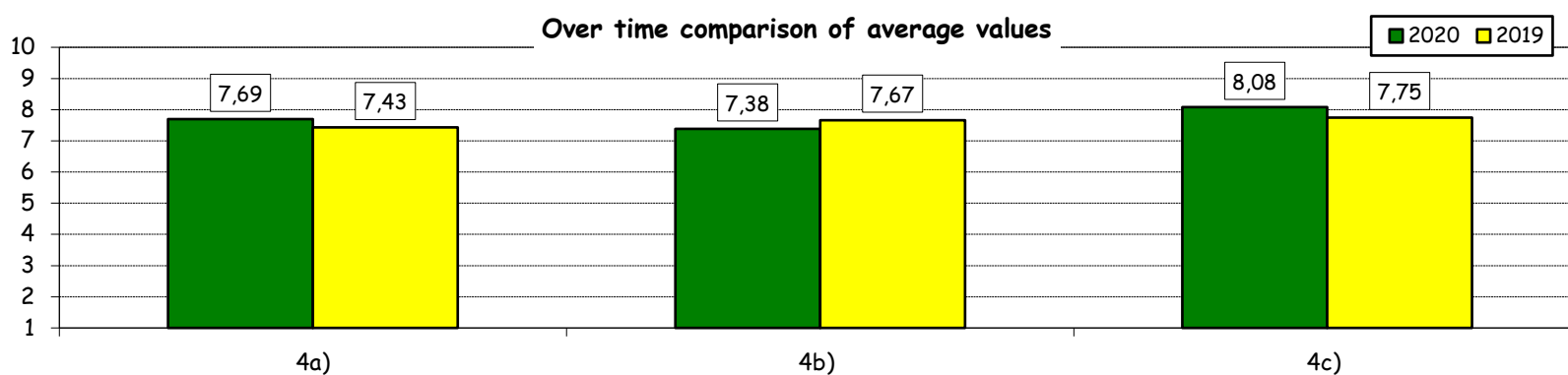
	a.v.	2020	2019
Italy	13	56,5%	66,7%
Abroad	10	43,5%	33,3%
Total	23	100%	100%
NA	0		



How would you evaluate:

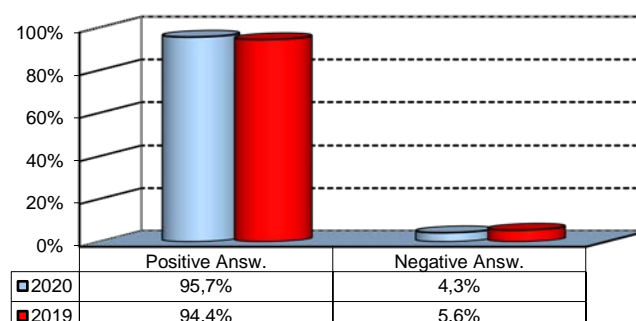
(In case of answer "A" to item no.2)

Item	Answers	Negative				Positive				Total		N.A.
		1-2		3-4-5		6-7-8		9-10		a.v.	%	a.v.
		a.v.	%	a.v.	%	a.v.	%	a.v.	%	a.v.	%	a.v.
4a) The convenience of the internship front desk's opening hours.		0	0,0	2	15,4	5	38,5	6	46,2	13	100,0	0
4b) The number and variety of opportunities offered		1	7,7	0	0,0	8	61,5	4	30,8	13	100,0	0
4c) The support you received from the Internship Office.		0	0,0	1	7,7	5	38,5	7	53,8	13	100,0	0



5) Would you positively evaluate this experience?

	a.v.	%
A - Definitely YES	15	65,2%
B - More YES than NO	7	30,4%
C - More NO than YES	1	4,3%
D - Definitely NO	0	0,0%
Total	23	100%
NA	0	



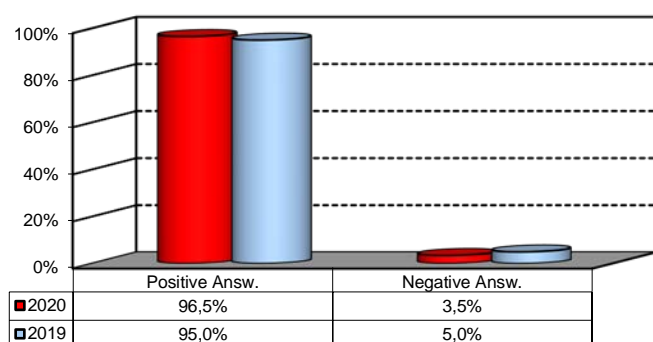
*JobGate, Internship Programs, Companies' meetings and presentations, Bocconi&Jobs, Placement Library's services, Curricular Internship Special, websites reported in the section 'Lavoro.net'

General satisfaction and short-term plans

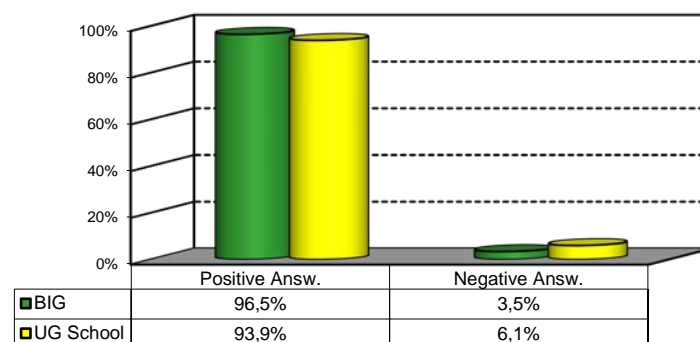
1) Are you satisfied overall with the study program you attended?

Answers	Italian School career		Int.nal School Career		Total	
	a.v.	%	a.v.	%	a.v.	%
A - Definitely YES	25	38,5%	10	47,6%	35	40,7%
B - More YES than NO	38	58,5%	10	47,6%	48	55,8%
C - More NO than YES	1	1,5%	1	4,8%	2	2,3%
D - Definitely NO	1	1,5%	0	0,0%	1	1,2%
Total	65	100%	21	100%	86	100%
NA	0		0		0	

Over time comparison



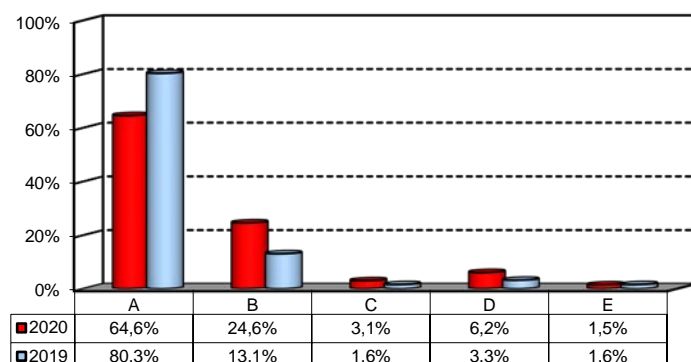
Comparison with the overall School data



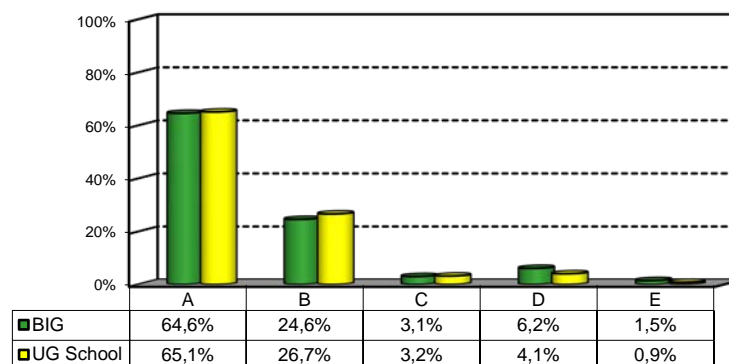
2a) If you could go back in time, would you enroll in the University again?

Answers	Italian School career		Int.nal School Career		Total	
	a.v.	%	a.v.	%	a.v.	%
A - YES, in the same Bachelor Program at this University	42	64,6%	15	71,4%	57	66,3%
B - YES, in another Program at this University	16	24,6%	3	14,3%	19	22,1%
C - YES, in the same Program but at another University	2	3,1%	2	9,5%	4	4,7%
D - YES, in another Program at another University	4	6,2%	1	4,8%	5	5,8%
E - NO, I would not enrol in university anymore	1	1,5%	0	0,0%	1	1,2%
Total	65	100%	21	100%	86	100%
NA	0		0		0	

Over time comparison



Comparison with the overall School data



General satisfaction and short-term plans

(In case of answer "B" to item no.2a)

2b) Which program would you enroll in at this University?

Answers	Italian School career		Int.nal School Career		Total	
	v.a.	%	v.a.	%	v.a.	%
BEMACS	2	12,5%	0	0,0%	2	11,1%
BIEF	1	6,3%	1	50,0%	2	11,1%
BIEM	8	50,0%	1	50,0%	9	50,0%
BIG	0	0,0%	0	0,0%	0	0,0%
CLEACC	0	0,0%	0	0,0%	0	0,0%
CLEAM	2	12,5%	0	0,0%	2	11,1%
CLEF	0	0,0%	0	0,0%	0	0,0%
CLES-BESS	3	18,8%	0	0,0%	3	16,7%
CLMG	0	0,0%	0	0,0%	0	0,0%
WBB	0	0,0%	0	0,0%	0	0,0%
Total	16	100%	2	100%	18	100%

(In case of answer "C", "D" or "E" to item no.2a)

2c) Why would you make a different choice?

Answers	Italian School career		Int.nal School Career		Total		
	v.a.	%	v.a.	%	2020 v.a.	2020 %	2019 %
A - My interest has changed during this time / I discovered that I have different attitudes	3	50,0%	0	0,0%	3	33,3%	25,0%
B - The Bachelor program did not mirror my expectations	2	33,3%	0	0,0%	2	22,2%	50,0%
C- I have not been admitted to the Bachelor Program selected as first-choice.	0	0,0%	0	0,0%	0	0,0%	25,0%
D- The campus and its facilities and services were not up to my expectations	0	0,0%	1	33,3%	1	11,1%	0,0%
E- I would have preferred to attend the same Bachelor Program but taught in English.	0	0,0%	0	0,0%	0	0,0%	0,0%
F - Other reasons	1	16,7%	2	66,7%	3	33,3%	0,0%
Total	6	100%	3	100%	9	100%	100%
NA	1		0		1		

F- Other reasons:

I did not want to specialize
Sarei andato all'estero
The campus and its facilities and services were not up to my expectations, but also level of support and engagement with students is very low. Very little inclusive activities, no sense of Bocconi community.
The university resulted to be more business oriented than what I had hoped for. The university lacks diversity and lacks a sense of community. It doesn't count with a proper orientation for first years (and exchange students) to feel welcomed.

General satisfaction and short-term plans

3) In the near future do you intend to:

	Italian School career		Int.nal School Career		Total		2019 %
	a.v.	%	a.v.	%	2020 a.v.	2020 %	
A- To go on with university studies at Bocconi (Master of Science, one-year Master of Science)	33	56,9%	6	28,6%	39	49,4%	52,8%
B-To go on with university studies at another Italian University	4	6,9%	0	0,0%	4	5,1%	5,7%
C- To go on with university studies abroad	19	32,8%	8	38,1%	27	34,2%	35,8%
D - To immediately look for a job	2	3,4%	6	28,6%	8	10,1%	0,0%
E - To accept a job proposal received	0	0,0%	1	4,8%	1	1,3%	5,7%
F - To continue to do the job started during this degree program	0	0,0%	0	0,0%	0	0,0%	0,0%
Total	58	100%	21	100%	79	100%	100%
NA	7		0		7		

4) If you intend to continue your university studies at another University (in Italy or abroad), what are the reasons for your choice? (multiple answers admitted)

	Italian School career		Int.nal School Career		Total		2019 %
	a.v.	%	a.v.	%	2020 a.v.	2020 %	
A - I would like to attend a more prestigious university	3	6,0%	1	5,3%	4	5,8%	12,5%
B - I would like to build a strong international curriculum	19	38,0%	7	36,8%	26	37,7%	37,5%
C- I can not bear the cost of studies (tuition fees and cost of living)	6	12,0%	3	15,8%	9	13,0%	2,5%
D - I can not bear the cost of studies (tuition fees and cost of living)	1	2,0%	1	5,3%	2	2,9%	7,5%
E- The administrative services are not sufficiently efficient	1	2,0%	2	10,5%	3	4,3%	2,5%
F - I think that the contents of Bocconi's MSc programs do not differ much from those of undergraduate programs	14	28,0%	2	10,5%	16	23,2%	22,5%
G - Other reasons	6	12,0%	3	15,8%	9	13,0%	15,0%
Total	50	100%	19	100%	69	100%	100%
NA	0		0		0		

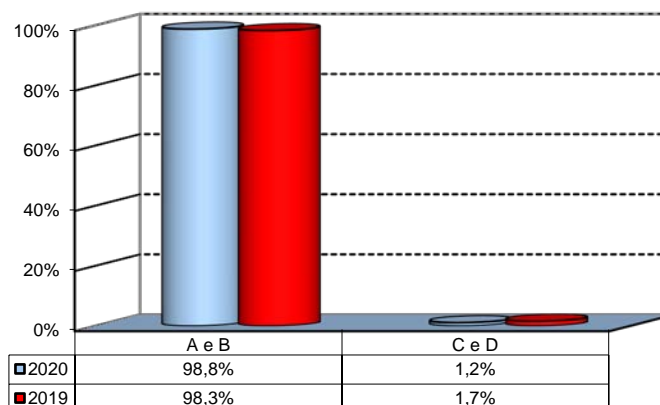
G - Other reasons:

Bocconi does not offer the master I was looking for.
I am completely satisfied with my studies at Bocconi, but I wanted to discover a new university with new perspectives, as well as living in another city.
I want to assist a more diverse and human rights focused university.
I wanted to go for a 1-year master more specialised than those offered in Bocconi, which remain too broad and do not allow for enough specialisation
it is difficult to enter in a DD, I wanted to do it
Le magistrali in Bocconi sono troppo focalizzate sull'economia o comunque su un metodo di insegnamento quantitativo, quindi non sempre adatte ai laureati del BIG.
Nessun corso magistrale prettamente inerente al programma di Scienze Politiche e Relazioni Internazionali
Non avevo particolare interesse per le magistrali
None of the courses offered at Bocconi mirrors my interests.
The MSc programs do not reflect my interests

Infrastructure: Classrooms, Library And Facilities

1) What is your opinion about the classrooms where lessons and other teaching activities have been held?*

Answers	a.v.	%
A - Always or nearly always adequate	59	68,6%
B - Often adequate	26	30,2%
C - Rarely adequate	1	1,2%
D - Never adequate	0	0,0%
E - I did not use them	0	0,0%
Total	86	100%
NA	0	

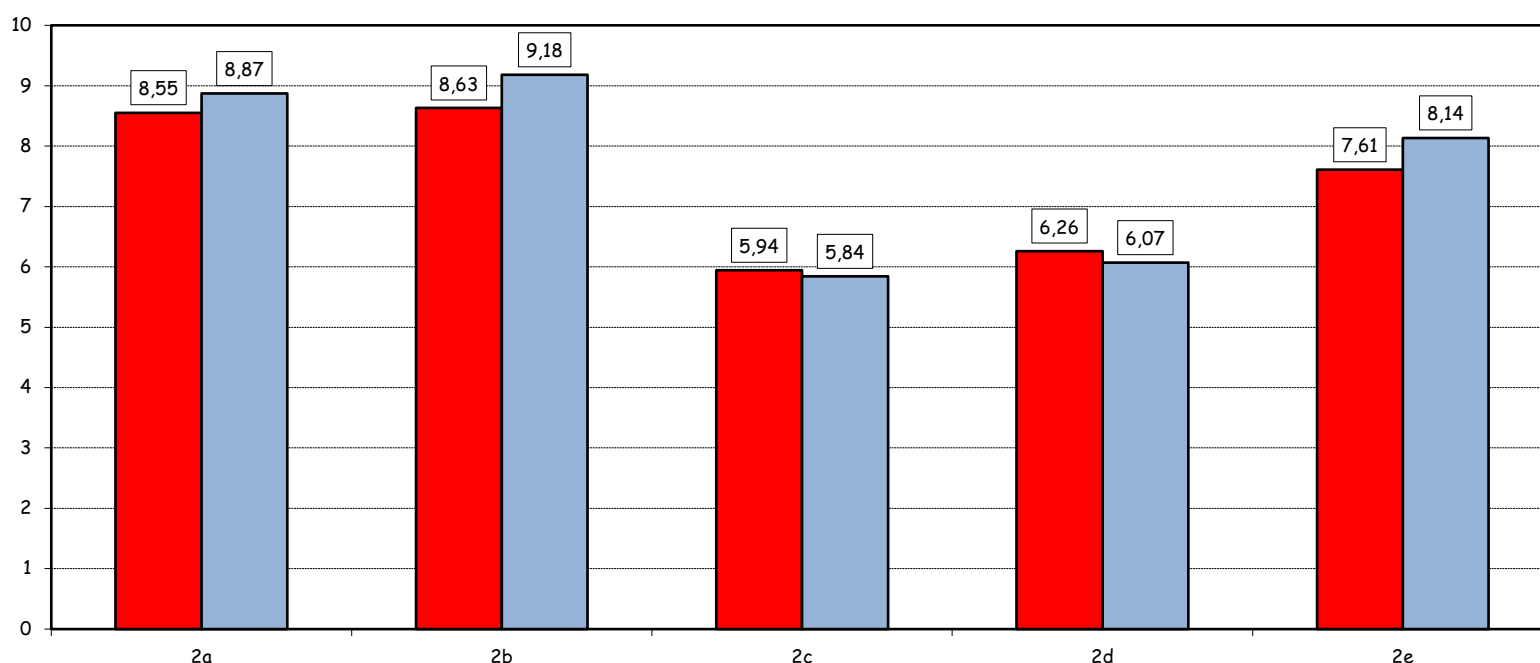


2) How would you evaluate:

Item	Answers	Negative				Positive				Total	NA	N.R.	
		1-2		3-4-5		6-7-8		9-10					
		a.v.	%	a.v.	%	a.v.	%	a.v.	%				
a) The adequacy of the audio and multimedia systems (e.g. instructor's computer, projectors, video players) installed in the classrooms		0	0,0	4	4,7	30	35,3	51	60,0	85	100,0		1
b) The cleanliness of classrooms and of other common areas on campus (corridors, halls, study rooms)		0	0,0	3	3,6	26	31,0	55	65,5	84	100,0		2
c) The adequacy of the amount of areas/seats reserved to individual study in the University Library		13	18,6	14	20,0	29	41,4	14	20,0	70	100,0	4	12
d) The adequacy of the amount of areas/seats reserved to individual study in other buildings on campus		10	11,9	17	20,2	40	47,6	17	20,2	84	100,0	1	1
e) The clarity and adequacy of the signage system on campus		0	0,0	9	10,7	45	53,6	30	35,7	84	100,0		2

Over time comparison of average values

2020 2019

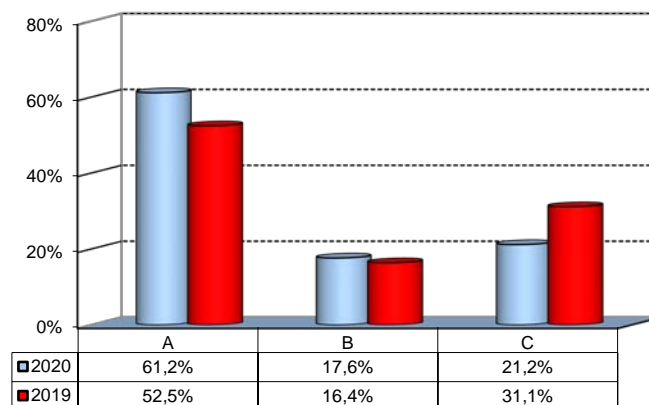


(*): the percentage shown on the graphs is calculated by excluding the responses of those who declare that they have not used the service.

Infrastructure: Classrooms, Library And Facilities

3) What is your overall opinion on the PC Labs and IT facilities provided by the University?

Answers	a.v.	%
A- Adequate in number	52	61,2%
B- Inadequate in number	15	17,6%
C- Never used	18	21,2%
Total	85	100%
NA	1	

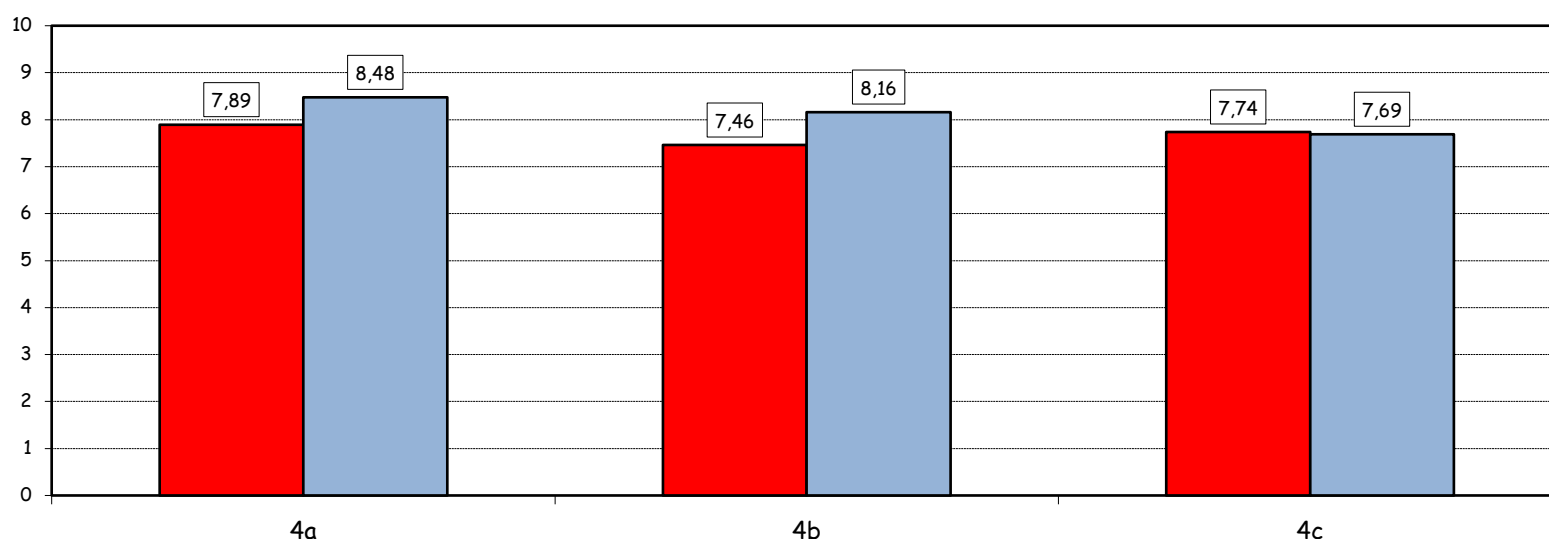


4) How would you evaluate:

Answers	Negative				Positive				Total		NA
	1-2		3-4-5		6-7-8		9-10				
	a.v.	%	a.v.	%	a.v.	%	a.v.	%	a.v.	%	
a) The availability of technical staff supporting students (Tutors) in PC Labs [^]	1	1,5	3	4,5	38	57,6	24	36,4	66	100,0	1
b) The convenience of the PC Labs' opening hours [^]	1	1,6	4	6,3	42	66,7	16	25,4	63	100,0	4
c) The level of accessibility and usability of the University's IT services (Internet access points, Punto Blu, Virtual Punto Blu, wireless connection)	1	1,2	9	10,7	42	50,0	32	38,1	84	100,0	2

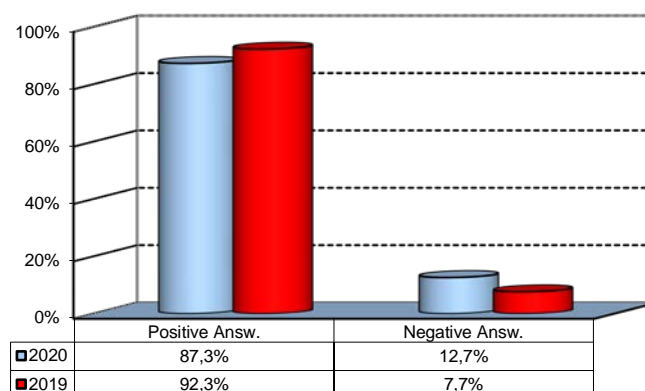
Over time comparison of average values

■ 2020 ■ 2019



5) What is your overall opinion on the Library's services, such as support for individual study?*

Answers	a.v.	%
A - Very Positive	22	25,9%
B - Quite positive	40	47,1%
C - Quite negative	8	9,4%
D - Very Negative	1	1,2%
E - Never used	14	16,5%
Total	85	100%
NA	1	



([^]): Only in case of answer "A" or "B" to item no.3

(*): the percentage shown on the graphs is calculated by excluding the responses of those who declare that they have not used the service.