

EVALUATION OF THE DEGREE PROGRAM AND THE UNIVERSITY EXPERIENCE

BACHELOR IN INTERNATIONAL ECONOMICS AND MANAGEMENT

N° QUESTIONNAIRES PROCESSED: 204

N° OF GRADUATE STUDENTS: 225

RESPONSE RATE: 90,7%



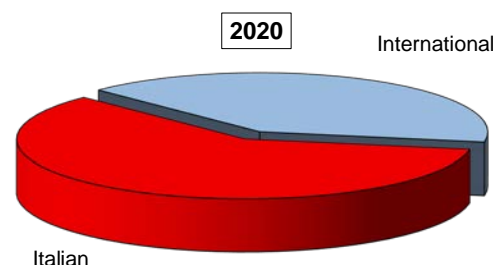
EVALUATION OF STUDENT EXPERIENCE

International Economics and Management

General information

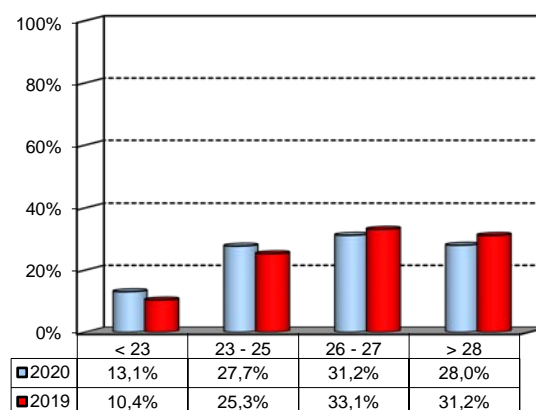
School Career

Answers	a.v.	%	
		2020	2019
Italian	224	59,7%	56,2%
International	151	40,3%	43,8%
Total	375	100%	100%
NA	0		



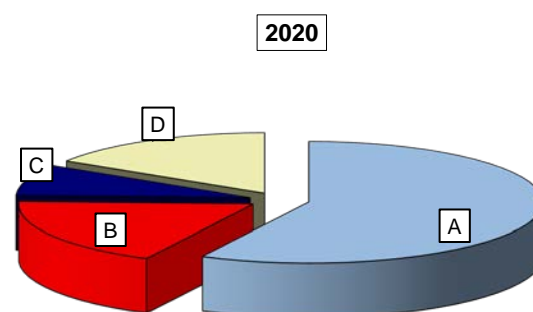
Average mark of the exams passed: (approximate average expressed in 30/30)

Answers	a.v.	%
< 23	49	13,1%
23 - 25	104	27,7%
26 - 27	117	31,2%
> 28	105	28,0%
Total	375	100%
NA	0	



How many of the courses included in your curriculum did you attend regularly?

Answers	a.v.	%	
		2020	2019
A - More than 75%	215	57,5%	71,3%
B - Between 50 and 75%	68	18,2%	20,5%
C - Between 25 and 50%	31	8,3%	5,3%
D - Less than 25%	60	16,0%	2,8%
Total	374	100%	100%
NA	1		

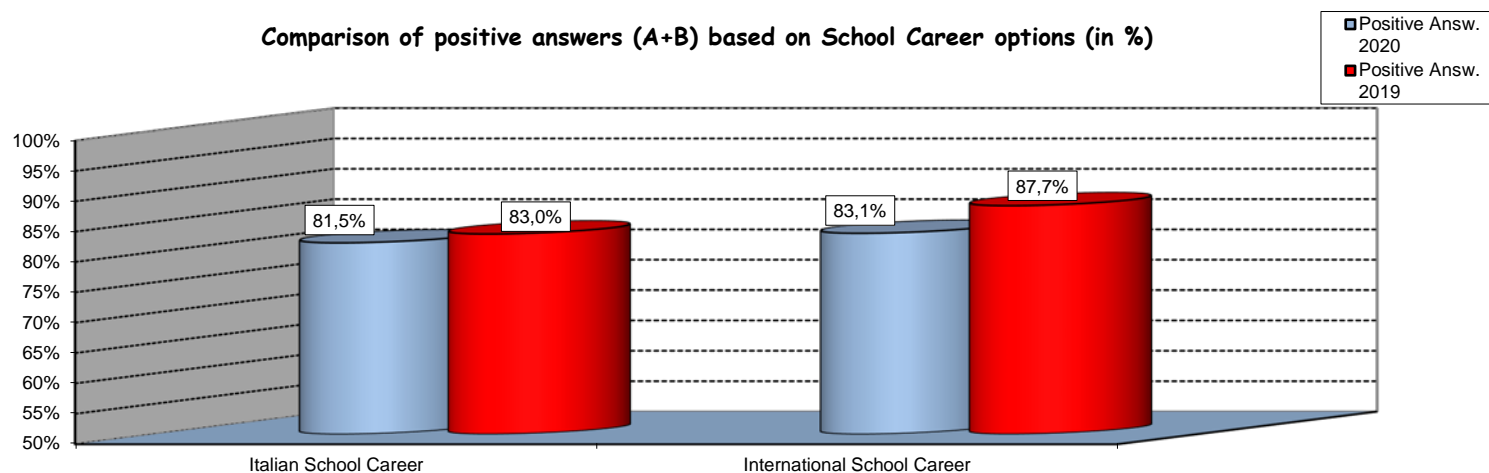


Study experience

1) Was the knowledge acquired during secondary school adequate to undertake your Bachelor program?

Answers	Italian School Career		International School Career		Total	
	a.v.	%	a.v.	%	a.v.	%
A - Definitely YES	89	40,1%	66	44,6%	155	41,4%
B - More YES than NO	92	41,4%	57	38,5%	149	39,8%
C - More NO than YES	38	17,1%	22	14,9%	60	16,0%
D - Definitely NO	4	1,8%	6	4,1%	10	2,7%
Total	223	100%	151	102%	374	100%
NA	1		0		1	

Comparison of positive answers (A+B) based on School Career options (in %)



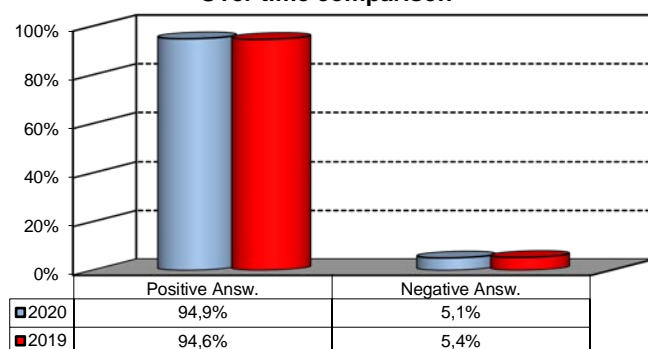
2) if you answered " More NO than YES" or "Definitely NO", indicate the subject or the subjects for which your previous knowledge revealed to be insufficient:

	a.v.	%
MATEMATICA - MODULO 1 (GENERALE)	36	19,6%
STATISTICA	29	15,8%
MATEMATICA - MODULO 2 (APPLICATA)	20	10,9%
ECONOMIA - MODULO 1 (MICROECONOMIA)	11	6,0%
BILANCIO - MODULO 1	9	4,9%
Altro	79	42,9%
Total	184	100%

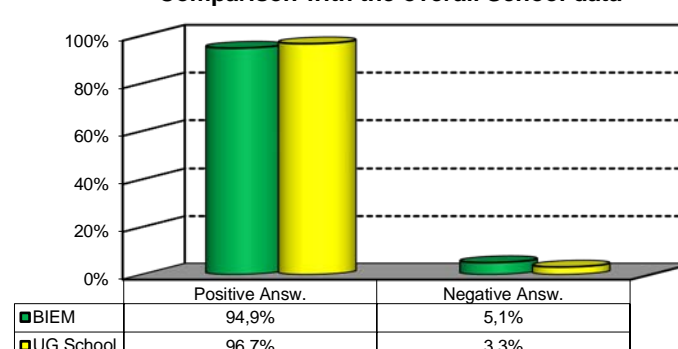
3) On the whole, do you appreciate the qualifications you acquired at the end of the Bachelor program at Bocconi?

Answers	Italian school Career		Int.nal School Career		Total	
	v.a.	%	v.a.	%	v.a.	%
A - Definitely YES	121	54,5%	73	49,3%	194	52,4%
B - More YES than NO	93	41,9%	64	43,2%	157	42,4%
C - More NO than YES	8	3,6%	11	7,4%	19	5,1%
D - Definitely NO	0	0,0%	0	0,0%	0	0,0%
Total	222	100%	148	100%	370	100%
NA	2		3		5	

Over time comparison



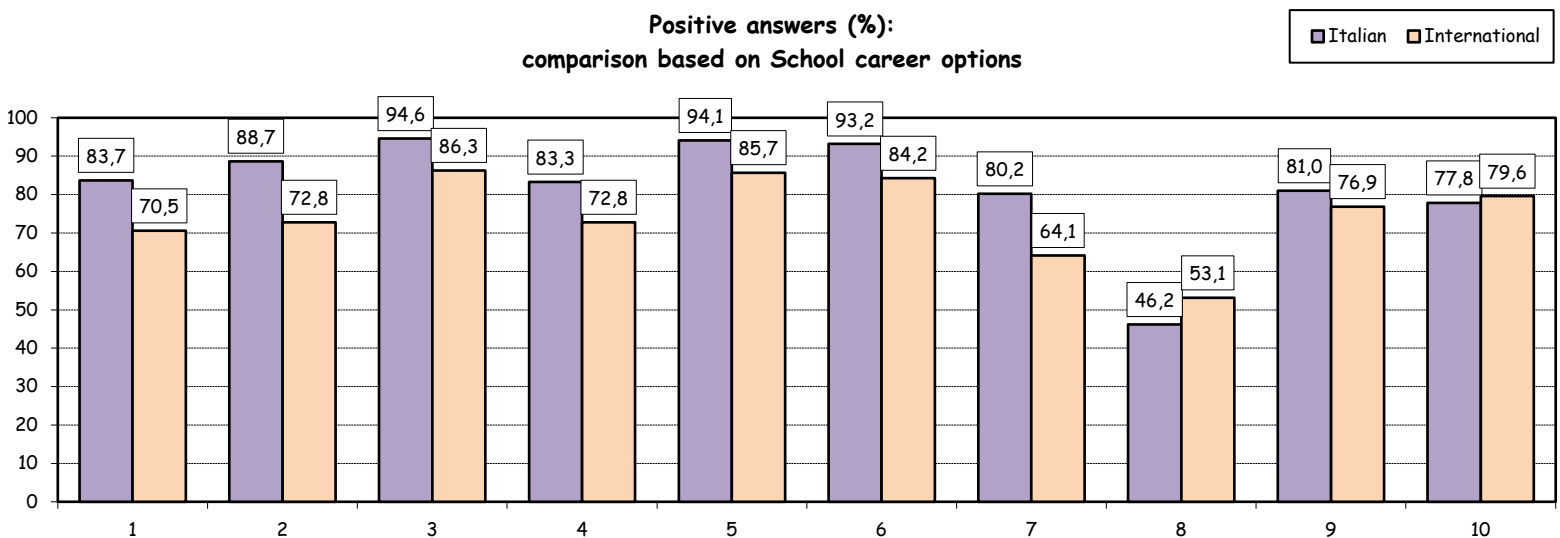
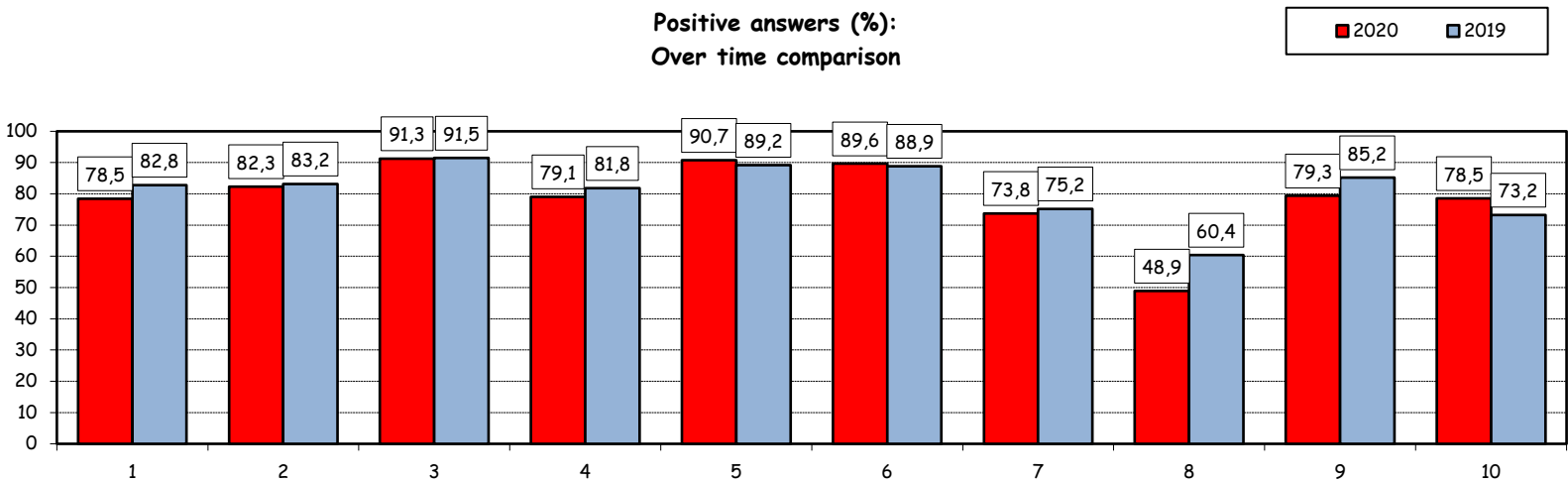
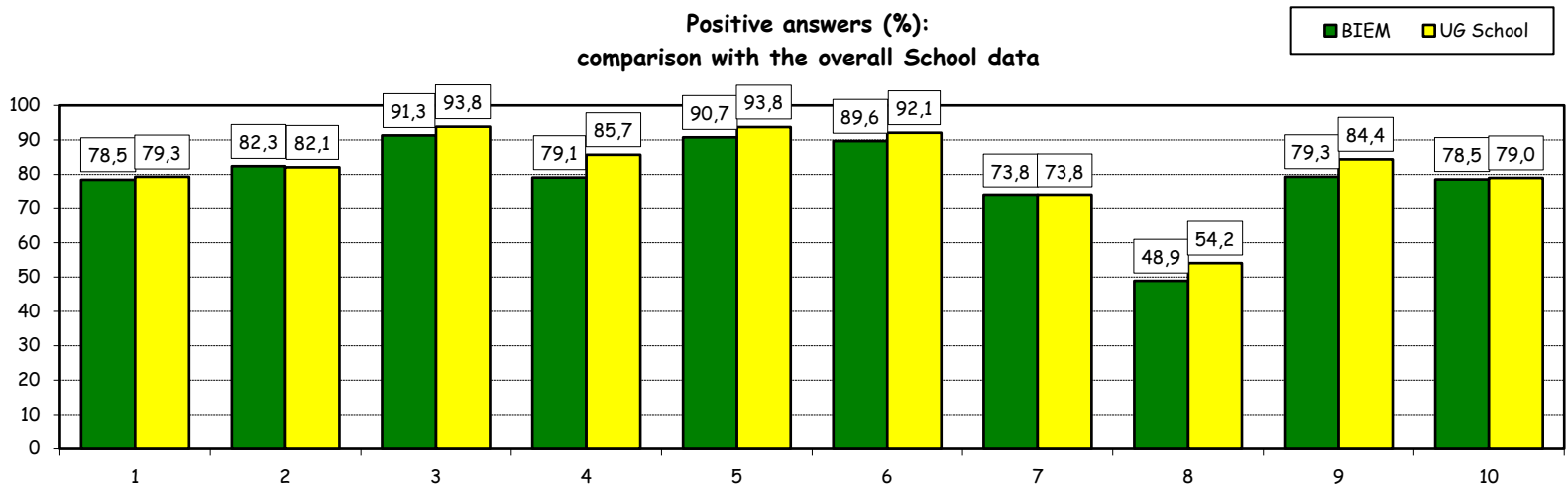
Comparison with the overall School data



Study experience

4) Do you think that your course of study at Bocconi has contributed to the development of the following skills?

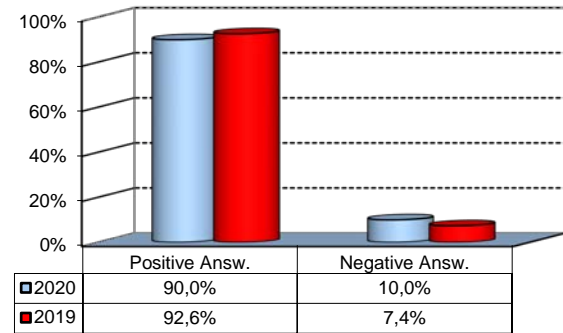
Soft Skill	Item	Definitely YES		More YES than NO		More NO than YES		Definitely NO		Total		n.a.
		a.v.	%	a.v.	%	a.v.	%	a.v.	%	a.v.	%	a.v.
1	Ability to work on a team	119	32,4	169	46,0	67	18,3	12	3,3	367	100,0	8
2	Interpersonal skills	120	32,6	183	49,7	60	16,3	5	1,4	368	100,0	7
3	Organizational skills	201	54,8	134	36,5	27	7,4	5	1,4	367	100,0	8
4	Critical thinking skills	147	39,9	144	39,1	68	18,5	9	2,4	368	100,0	7
5	Ability to analyze and select information	185	50,4	148	40,3	31	8,4	3	0,8	367	100,0	8
6	Problem-solving ability	168	45,9	160	43,7	33	9,0	5	1,4	366	100,0	9
7	Written communication skills	118	32,6	149	41,2	72	19,9	23	6,4	362	100,0	13
8	Verbal communication skills	60	16,4	119	32,5	131	35,8	56	15,3	366	100,0	9
9	Ability to cope with stress	195	53,0	97	26,4	46	12,5	30	8,2	368	100,0	7
10	Computer Skills	122	33,2	167	45,4	63	17,1	16	4,3	368	100,0	7



Study experience

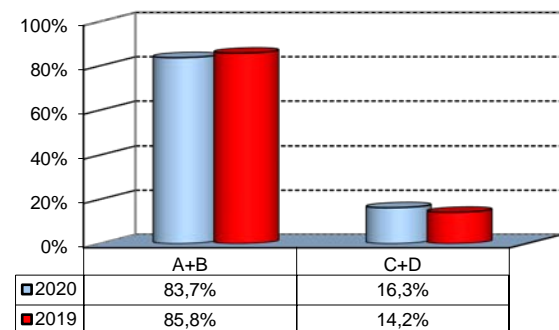
5) Do you think that the courses in your curriculum were adequately coordinated with each other?

	a.v.	%
A - Definitely YES	103	27,9%
B - More YES than NO	229	62,1%
C - More NO than YES	33	8,9%
D - Definitely NO	4	1,1%
Total	369	100%
NA	6	



6a) Do you think that the overall study load was compatible with the length of the program?

	a.v.	%
A - Definitely YES	121	32,8%
B - More YES than NO	188	50,9%
C - More NO than YES	48	13,0%
D - Definitely NO	12	3,3%
Total	369	100%
NA	6	



6b) Specifically, do you believe that the study load was excessive or insufficient?

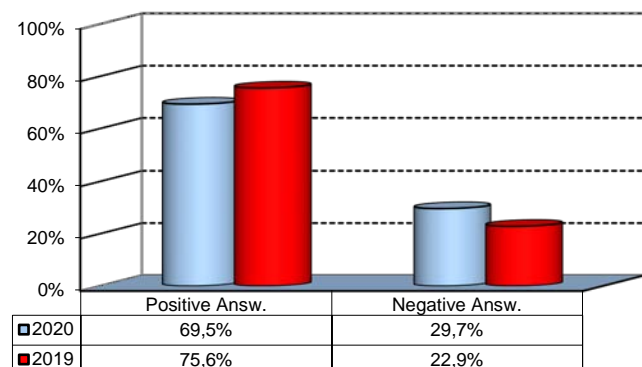
(In case of answer "C" to item no.6a)

	a.v.	% 2020	% 2019
Excessive	34	91,9%	100,0%
Insufficient	3	8,1%	0,0%
Total	37	100%	0%
NA	23		

Final Report

1) Do you think that the supervision and assistance for preparing for your final report (internship report, final paper or other) were adequate?

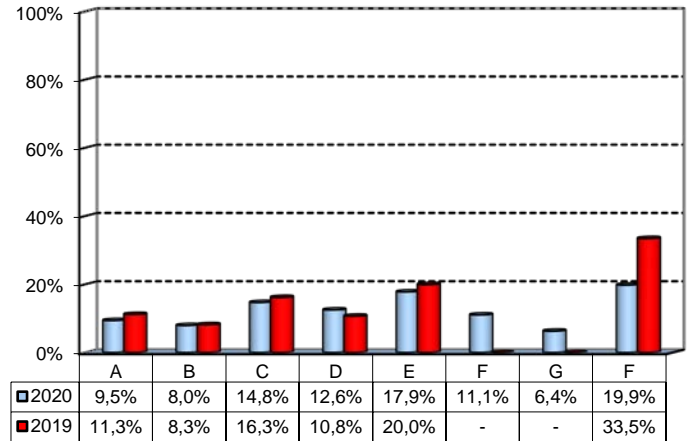
	a.v.	%
A - Definitely YES	111	30,0%
B - More YES than NO	146	39,5%
C - More NO than YES	82	22,2%
D - Definitely NO	28	7,6%
E - Supervision was not expected	3	0,8%
Total	370	100%
NA	5	



Extracurricular Activities

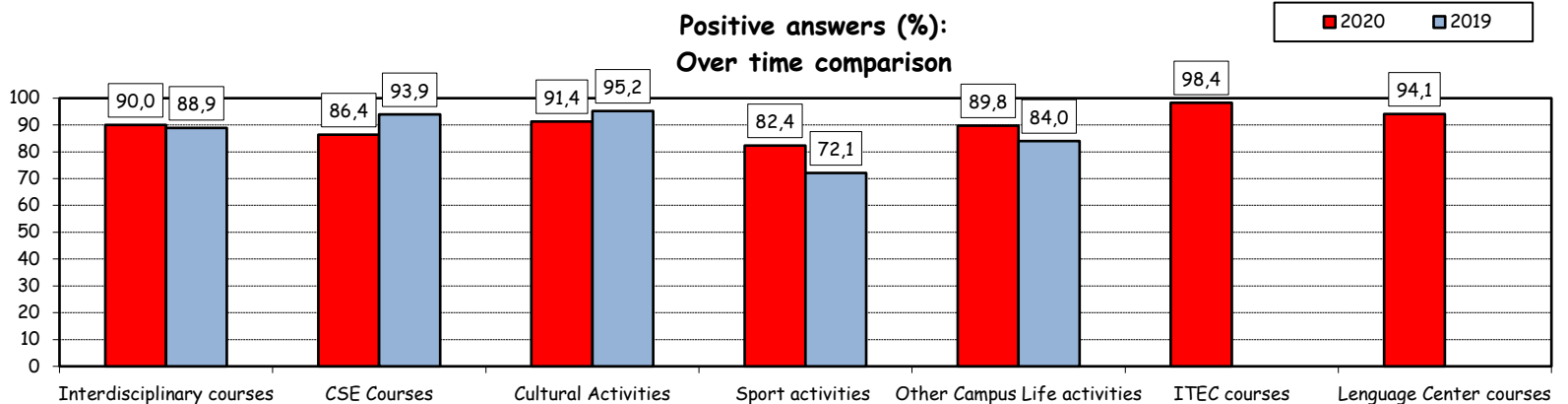
1) Which of the following extracurricular activities did you attend during the Bachelor Program?
(multiple answers admitted)

	a.v.	%
A - Interdisciplinary courses ("Sapere a tutto campo")	52	9,5%
B - Counseling and Self-Empowerment courses (CSE)	44	8,0%
C - Cultural Activities (visit museums, concerts, theatre and cinema, various issues)	81	14,8%
D - Sport activities	69	12,6%
E - Other Campus Life activities	98	17,9%
F - IT Education Center courses (ITEC)	61	11,1%
G - Language Center courses	35	6,4%
H - None	109	19,9%
Total	549	100%
NA	0	



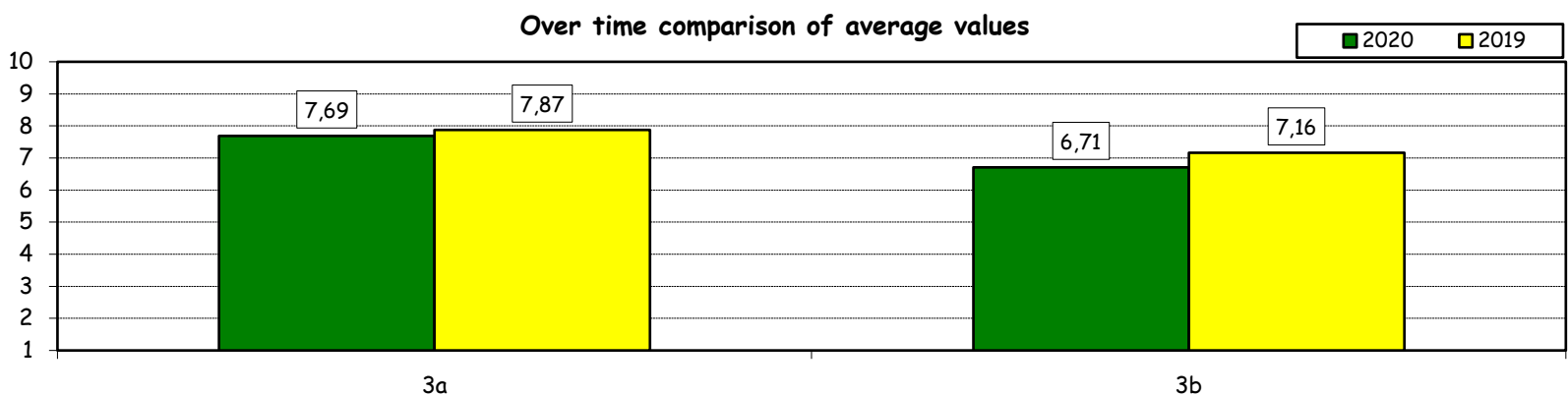
2) Do you think that the activities you took part in contributed to your cultural/educational enrichment?

	Definitely YES		More YES than NO		More NO than YES		Definitely NO		Total		NA
	a.v.	%	a.v.	%	a.v.	%	a.v.	%	a.v.	%	a.v.
A - Interdisciplinary courses	25	50,0	20	40,0	5	10,0	0	0,0	50	100,0	2
B - CSE courses	21	47,7	17	38,6	4	9,1	2	4,5	44	100,0	0
C - Cultural Activities	39	48,1	35	43,2	7	8,6	0	0,0	81	100,0	0
D - Sport activities	20	29,4	36	52,9	11	16,2	1	1,5	68	100,0	1
E - Other Campus Life activities	40	40,8	48	49,0	10	10,2	0	0,0	98	100,0	0
F - ITEC courses	26	42,6	34	55,7	1	1,6	0	0,0	61	100,0	0
G - Language Center courses	12	35,3	20	58,8	2	5,9	0	0,0	34	100,0	1



How would you evaluate:

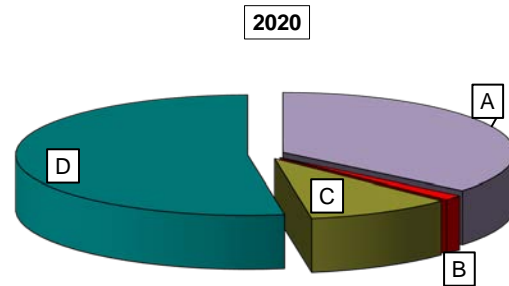
Item	Answers	Negative				Positive				Total		NA
		1-2		3-4-5		6-7-8		9-10		a.v.	%	
		a.v.	%	a.v.	%	a.v.	%	a.v.	%	a.v.	%	
3a) The range and interest of programmes offered		1	0,4	19	8,5	144	64,6	59	26,5	223	100,0	43
3b) The support you received from the Campus Life Office		17	7,4	38	16,6	129	56,3	45	19,7	229	100,0	37



Experience Of Studying Abroad

1) Type of experience:

Answers	a.v.	%	
		2020	2019
A - Exchange	134	35,9%	39,7%
B - Double Degree	5	1,3%	1,7%
C - Free-Mover	38	10,2%	5,9%
D - None	196	52,5%	52,7%
Total	373	100%	100%
NA	2		

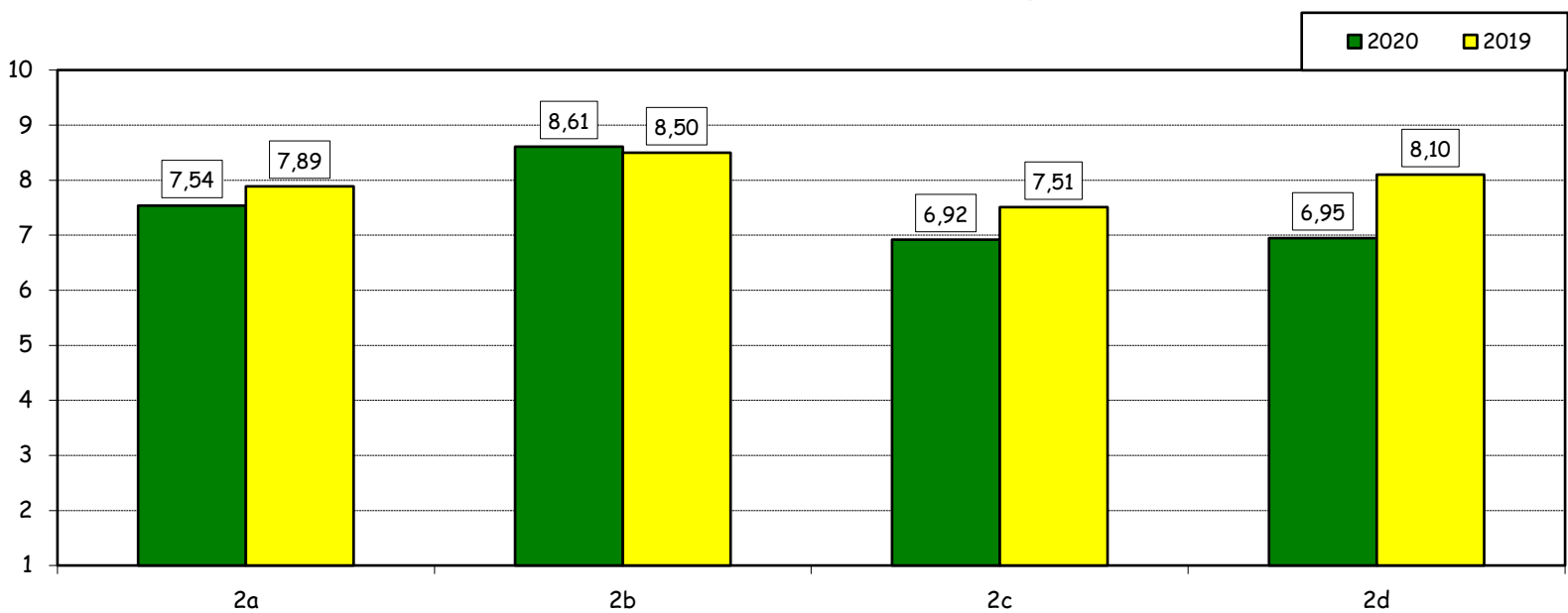


How would you evaluate:

(only A or B answers to item no.1)

Item	Answers	Negative						Positive		Total		N.A. a.v.
		1-2		3-4-5		6-7-8		9-10		a.v.	%	
		a.v.	%	a.v.	%	a.v.	%	a.v.	%			
2a) Quality and completeness of information provided through: "International Week," emails, brochures, International Relations Service web page		3	2,2	14	10,3	74	54,4	45	33,1	136	100,0	3
2b) The range and interest of programs offered.		0	0,0	4	2,9	58	42,0	76	55,1	138	100,0	1
2c) The convenience of the study abroad desk's opening hours.		7	5,2	21	15,7	78	58,2	28	20,9	134	100,0	5
2d) The support you received from Bocconi International Relations.		9	6,6	23	16,8	63	46,0	42	30,7	137	100,0	2

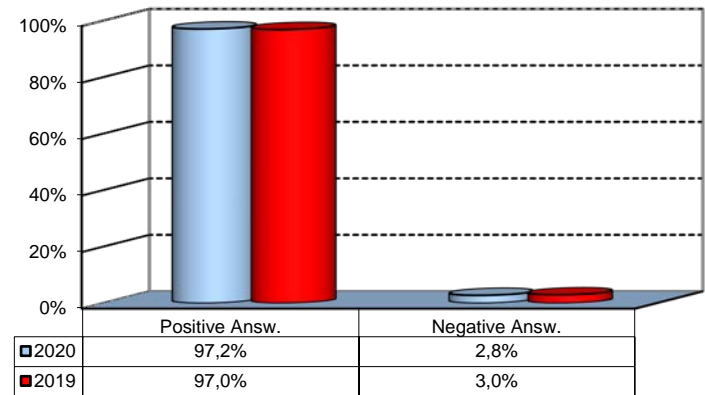
Over time comparison of average values



Experience Of Studying Abroad

3) Would you positively evaluate this experience?

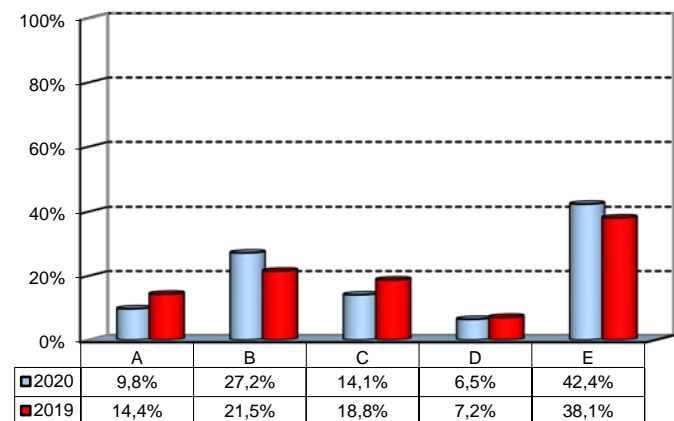
Answers	a.v.	%
A - Definitely YES	114	64,8%
B - More YES than NO	57	32,4%
C - More NO than YES	4	2,3%
D - Definitely NO	1	0,6%
Total	176	100%
NA	1	



(In case of answer "D" to item no.1)

4) Please indicate why you did not attend a period of study abroad (select all relevant reasons):

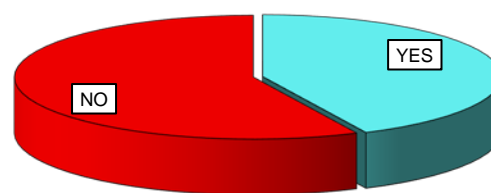
Answers	a.v.	%
A-Lack of interest in this kind of experience	18	9,8%
B-Absence of the requirements needed for participation in the program selected	50	27,2%
C-Rejection of your application	26	14,1%
D-Lack of time during the period of study	12	6,5%
E-Other (personal, family, organizational reasons, etc.)	78	42,4%
Total	184	100%
NA	12	



Internship Activities

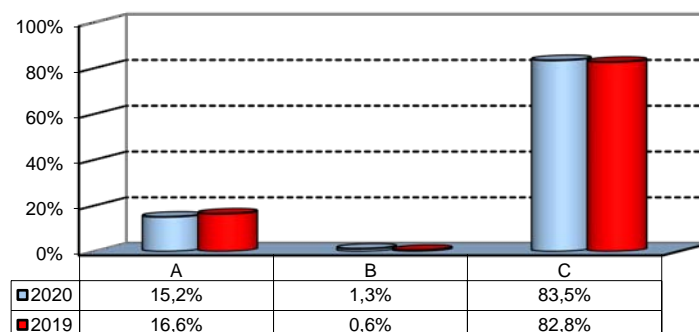
1) Did you attend an internship recognized by the Bachelor program?

	a.v.	2020	2019
YES	160	42,9%	44,5%
NO	213	57,1%	55,5%
Total	373	100%	100%
NA	2		



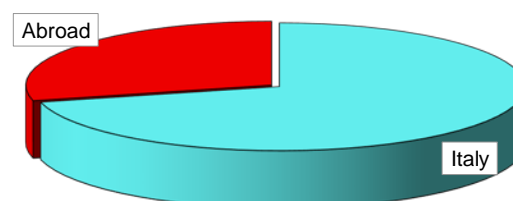
2) How did you find the internship?

	a.v.	%
A - Through the University's Placement Services*	24	15,2%
B - Through the faculty members of the degree program	2	1,3%
C - Through autonomous way then recognized by the degree program	132	83,5%
Total	158	100%
NA	2	



3) Where did you do the internship recognised by the Bachelor Program?

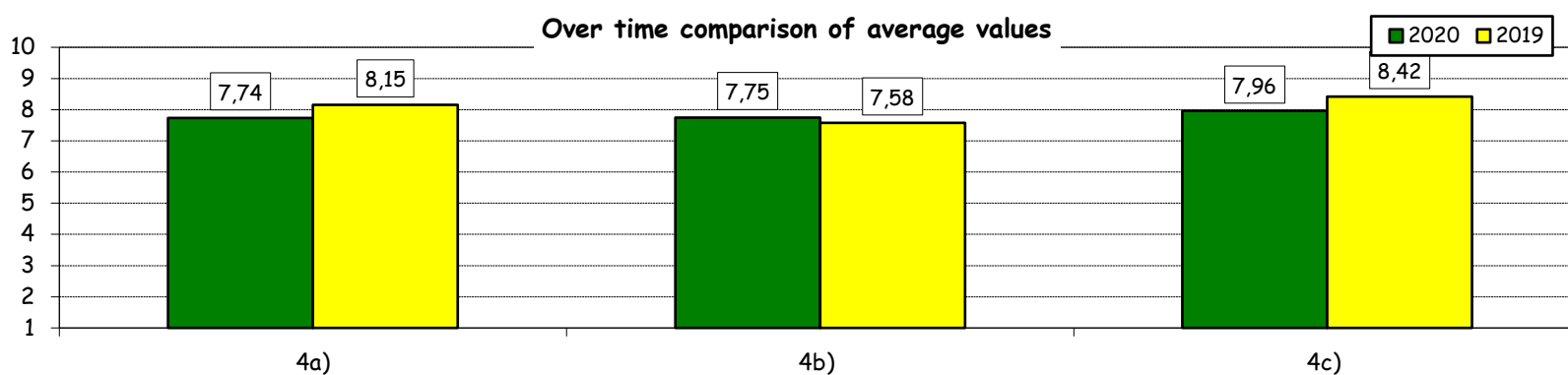
	a.v.	2020	2019
Italy	113	71,1%	61,1%
Abroad	46	28,9%	38,9%
Total	159	100%	100%
NA	1		



How would you evaluate:

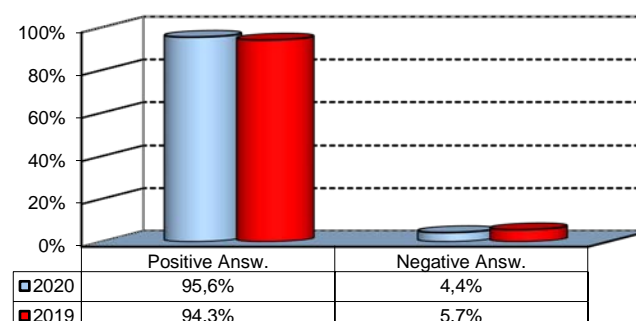
(In case of answer "A" to item no.2)

Item	Answers	Negative				Positive				Total		N.A.
		1-2		3-4-5		6-7-8		9-10		a.v.	%	a.v.
		a.v.	%	a.v.	%	a.v.	%	a.v.	%	a.v.	%	a.v.
4a) The convenience of the internship front desk's opening hours.		0	0,0	3	13,0	14	60,9	6	26,1	23	100,0	1
4b) The number and variety of opportunities offered		0	0,0	1	4,2	18	75,0	5	20,8	24	100,0	0
4c) The support you received from the Internship Office.		0	0,0	3	13,0	11	47,8	9	39,1	23	100,0	1



5) Would you positively evaluate this experience?

	a.v.	%
A - Definitely YES	115	72,3%
B - More YES than NO	37	23,3%
C - More NO than YES	7	4,4%
D - Definitely NO	0	0,0%
Total	159	100%
NA	1	



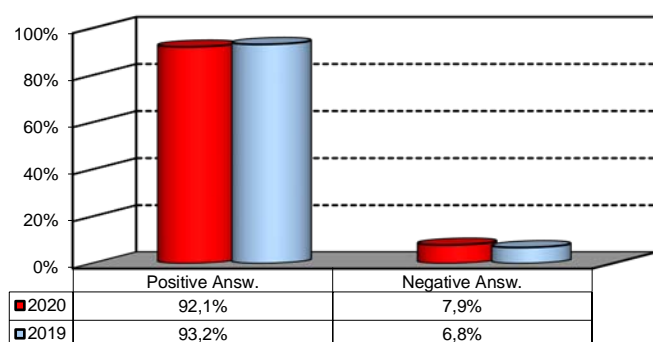
*JobGate, Internship Programs, Companies' meetings and presentations, Bocconi&Jobs, Placement Library's services, Curricular Internship Special, websites reported in the section 'Lavoro.net'

General satisfaction and short-term plans

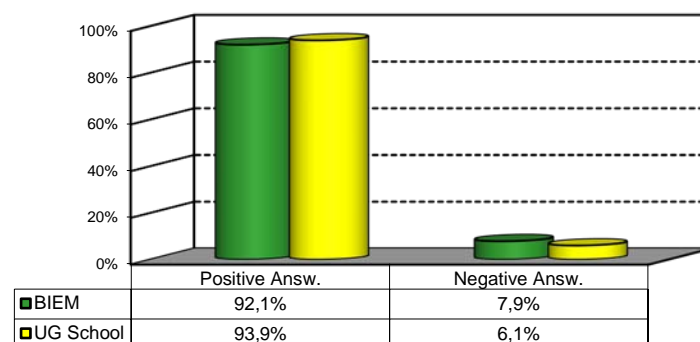
1) Are you satisfied overall with the study program you attended?

Answers	Italian School career		Int.nal School Career		Total	
	a.v.	%	a.v.	%	a.v.	%
A - Definitely YES	99	44,8%	61	42,1%	160	43,7%
B - More YES than NO	110	49,8%	67	46,2%	177	48,4%
C - More NO than YES	12	5,4%	17	11,7%	29	7,9%
D - Definitely NO	0	0,0%	0	0,0%	0	0,0%
Total	221	100%	145	100%	366	100%
NA	3		6		9	

Over time comparison



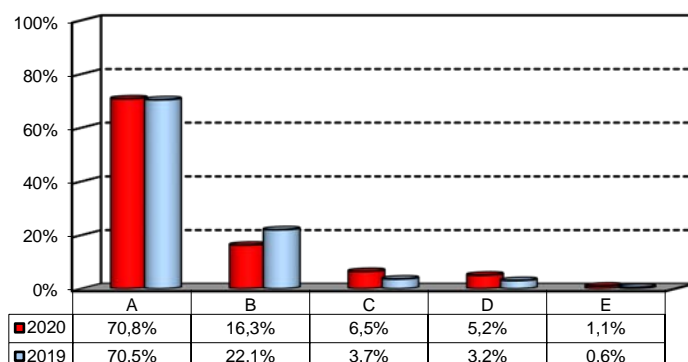
Comparison with the overall School data



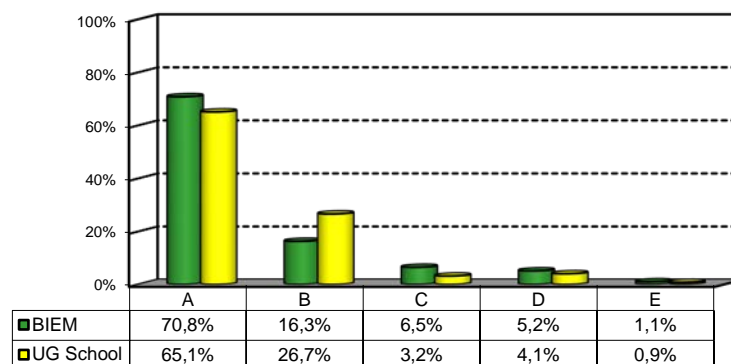
2a) If you could go back in time, would you enroll in the University again?

Answers	Italian School career		Int.nal School Career		Total	
	a.v.	%	a.v.	%	a.v.	%
A - YES, in the same Bachelor Program at this University	168	76,0%	92	63,0%	260	70,8%
B - YES, in another Program at this University	28	12,7%	32	21,9%	60	16,3%
C - YES, in the same Program but at another University	11	5,0%	13	8,9%	24	6,5%
D - YES, in another Program at another University	13	5,9%	6	4,1%	19	5,2%
E - NO, I would not enrol in university anymore	1	0,5%	3	2,1%	4	1,1%
Total	221	100%	146	100%	367	100%
NA	3		5		8	

Over time comparison



Comparison with the overall School data



General satisfaction and short-term plans

(In case of answer "B" to item no.2a)

2b) Which program would you enroll in at this University?

Answers	Italian School career		Int.nal School Career		Total	
	v.a.	%	v.a.	%	v.a.	%
BEMACS	5	18,5%	9	34,6%	14	26,4%
BIEF	15	55,6%	9	34,6%	24	45,3%
BIEM	0	0,0%	0	0,0%	0	0,0%
BIG	3	11,1%	5	19,2%	8	15,1%
CLEACC	1	3,7%	1	3,8%	2	3,8%
CLEAM	1	3,7%	0	0,0%	1	1,9%
CLEF	0	0,0%	0	0,0%	0	0,0%
CLES-BESS	2	7,4%	0	0,0%	2	3,8%
CLMG	0	0,0%	0	0,0%	0	0,0%
WBB	0	0,0%	2	7,7%	2	3,8%
Total	27	100%	26	100%	53	100%

(In case of answer "C", "D" or "E" to item no.2a)

2c) Why would you make a different choice?

Answers	Italian School career		Int.nal School Career		Total		2019 %
	v.a.	%	v.a.	%	2020 v.a.	2020 %	
A - My interest has changed during this time / I discovered that I have different attitudes	8	36,4%	2	10,5%	10	24,4%	26,1%
B - The Bachelor program did not mirror my expectations	6	27,3%	7	36,8%	13	31,7%	34,8%
C- I have not been admitted to the Bachelor Program selected as first-choice.	0	0,0%	0	0,0%	0	0,0%	0,0%
D- The campus and its facilities and services were not up to my expectations	3	13,6%	6	31,6%	9	22,0%	30,4%
E- I would have preferred to attend the same Bachelor Program but taught in English.	0	0,0%	0	0,0%	0	0,0%	0,0%
F - Other reasons	5	22,7%	4	21,1%	9	22,0%	8,7%
Total	22	100%	19	100%	41	100%	100%
NA	2		3		5		

F- Other reasons:

Avrei preferito un approccio allo studio pi' pratico e meno teorico/mnemonico
avrei voluto la certezza di andare in exchange
I am unsatisfied with the teaching (courses is very theoretical, professors often struggle with English language and exams are often full of errors). Lack of possibility to truly tailor the degree. My thesis professor ghosted me after approving my title.
I thought was not ready to go abroad at that time
i was not allowed to change
I would have preferred a more practical approach
il costo non è proporzionale all'offerta
Job opportunities are scarce.
The environment is a huge source of stress and anxiety, it penalizes who underperforms in such conditions. I have experienced a generalised feeling of incompatibility with the teaching methods adopted.
The program is too rigid
too heavily focused on theory

General satisfaction and short-term plans

3) In the near future do you intend to:

	Italian School career		Int.nal School Career		Total		2019 %
	a.v.	%	a.v.	%	2020 a.v.	%	
A- To go on with university studies at Bocconi (Master of Science, one-year Master of Science)	105	51,0%	22	16,3%	127	37,2%	40,5%
B- To go on with university studies at another Italian University	7	3,4%	3	2,2%	10	2,9%	1,8%
C- To go on with university studies abroad	88	42,7%	55	40,7%	143	41,9%	39,4%
D - To immediately look for a job	2	1,0%	32	23,7%	34	10,0%	10,2%
E - To accept a job proposal received	4	1,9%	12	8,9%	16	4,7%	5,5%
F - To continue to do the job started during this degree program	0	0,0%	11	8,1%	11	3,2%	2,6%
Total	206	100%	135	100%	341	100%	100%
NA	18		16		34		

4) If you intend to continue your university studies at another University (in Italy or abroad), what are the reasons for your choice? (multiple answers admitted)

	Italian School career		Int.nal School Career		Total		2019 %
	a.v.	%	a.v.	%	2020 a.v.	%	
A - I would like to attend a more prestigious university	17	10,8%	11	9,3%	28	10,1%	16,0%
B - I would like to build a strong international curriculum	74	46,8%	57	48,3%	131	47,5%	50,3%
C- I can not bear the cost of studies (tuition fees and cost of living)	5	3,2%	5	4,2%	10	3,6%	2,2%
D - I can not bear the cost of studies (tuition fees and cost of living)	6	3,8%	3	2,5%	9	3,3%	4,4%
E- The administrative services are not sufficiently efficient	7	4,4%	12	10,2%	19	6,9%	2,8%
F - I think that the contents of Bocconi's MSc programs do not differ much from those of undergraduate programs	23	14,6%	12	10,2%	35	12,7%	15,5%
G - Other reasons	26	16,5%	18	15,3%	44	15,9%	8,8%
Total	158	100%	118	100%	276	100%	100%
NA	0		0		0		

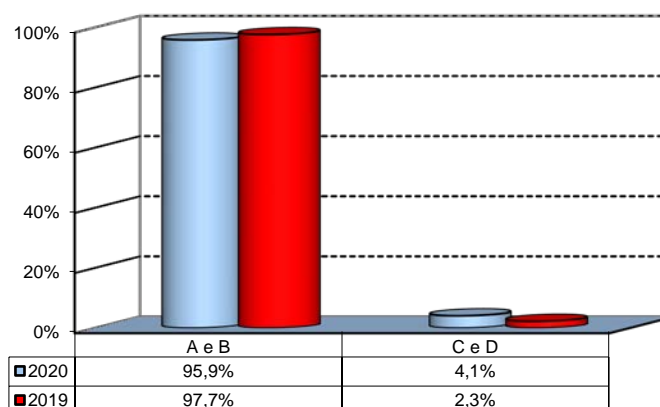
G - Other reasons:

approccio troppo teorico, solo GPA considerato
Bocconi did not meet my expectations.
Bocconi environment is too competitive and put too much pressure on students.
Bocconi has a very theoretical approach
Bocconi should be more focused on delivering a more hands on experience at the MSc programs. Furthermore, the university in the last period has demonstrated that it can't handle complex situations as the one of COVID-19. Bocconi hasn't been able to deliver a quality service that
cambiare universita vuol dire anche cambiare metodo di insegnamento e dunque arricchirsi
Con la mia media non sarei riuscito ad entrare nell'MSc in International Management in Bocconi, mentre sono stato ammesso ad un corso equivalente in un'altra universita egualmente prestigiosa.
Covid-19 makes it hard to find a job right now, the safest option is to continue with our studies now and work later
è veramente molto difficile essere ammessi ad un corso di laurea in management in inglese in Bocconi.
For Bocconi students it is too difficult to enter
I am not studying further
i am starting to work
I do not want to study anymore
I have not been accepted in the course of my interest
I haven't been admitted
I wanna see another country with different people
I want to change city
I was looking for a more practical masters
I wasn't admitted in Bocconi
I would like to work abroad
indirizzare i miei studi verso un campo artistico
La mia media non basta ad accedere al corso scelto
Mi piace il cambiamento.
no job opportunities
Non ammesso in bocconi
Non hanno accettato la domanda di ammissione
Non ho i requisiti necessari per essere ammessa
Non ho una media abbastanza alta per poter entrare nel corso di studi che vorrei.
Non sono stata presa in Bocconi
not enough interested in the courses offered
Other universities offer different courses
pochi internazionali nei corsi in inglese
The environment is a huge source of stress and anxiety, it penalizes who underperforms in such conditions. I have experienced a generalised feeling of incompatibility with the teaching methods adopted.
The field I'm pursuing (hospitality) has its own ecosystem, and I decided to attend a prestigious university in this certain field.
The management of courses during the COVID19 pandemic has been incredibly bad.
The master degree I want to pursue is not offered
The style of teaching is too theoretical
to experience other universities
too few places in eng management courses available
troppa teoria e poca pratica
Wanted to attend the Msc in Finance in Bocconi but did not get the expected grades for it.
With my average I was not expecting the university to let me continue my studies.
Voglio specializzarmi in hospitality, perciò andrò a fare un master specifico su ciò
La Bocconi prepara molto bene e ha una certa fama internazionale, tuttavia il mercato del lavoro in Italia è schifosamente povero di opportunità. Pertanto, ho valutato che proseguire gli studi all'estero sia una soluzione più adeguata. Inoltre, ho intenzione di diversificare il mio curriculum accademico.
Voglio frequentare un corso non offerto dalla Bocconi

Infrastructure: Classrooms, Library And Facilities

1) What is your opinion about the classrooms where lessons and other teaching activities have been held?*

Answers	a.v.	%
A - Always or nearly always adequate	219	60,0%
B - Often adequate	130	35,6%
C - Rarely adequate	14	3,8%
D - Never adequate	1	0,3%
E - I did not use them	1	0,3%
Total	365	100%
NA	10	

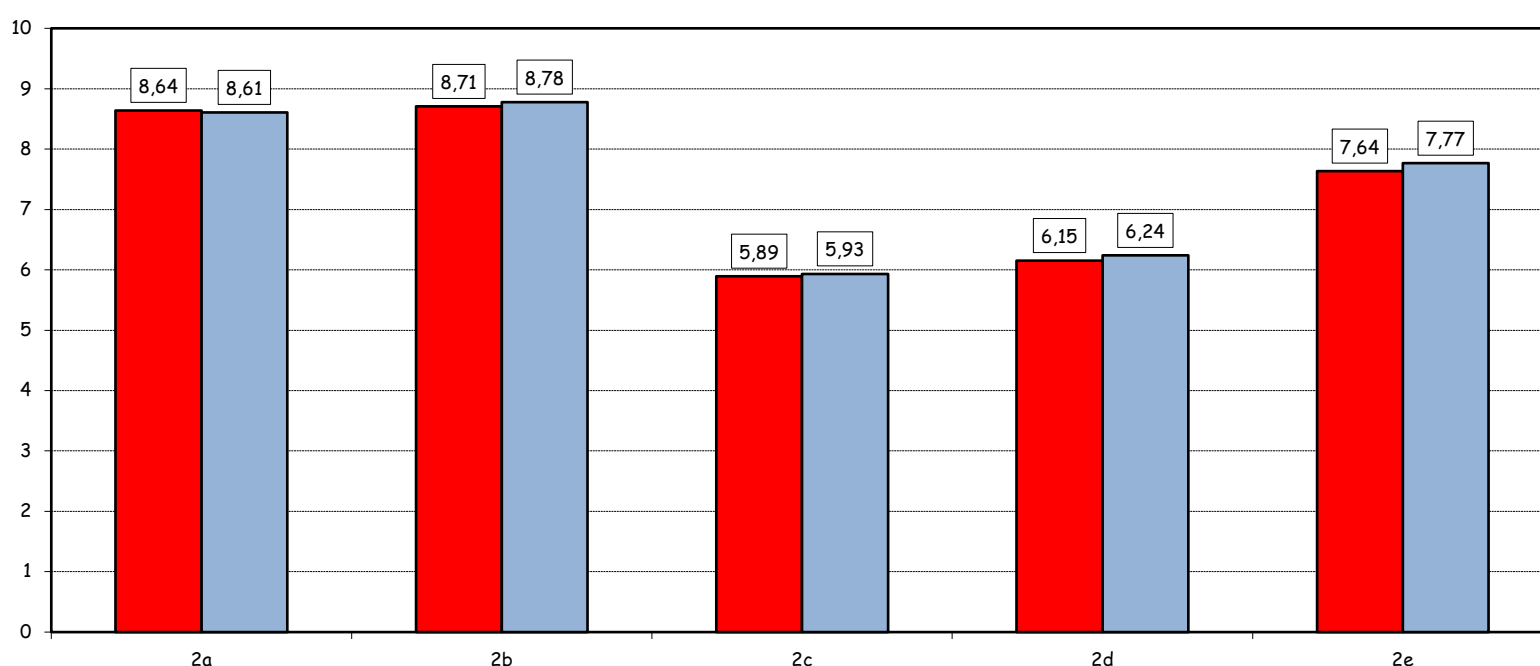


2) How would you evaluate:

Item	Answers	Negative				Positive				Total	NA	N.R.	
		1-2		3-4-5		6-7-8		9-10					
		a.v.	%	a.v.	%	a.v.	%	a.v.	%				
a) The adequacy of the audio and multimedia systems (e.g. instructor's computer, projectors, video players) installed in the classrooms		0	0,0	6	1,6	141	38,6	218	59,7	365	100,0		10
b) The cleanliness of classrooms and of other common areas on campus (corridors, halls, study rooms)		1	0,3	13	3,6	109	29,9	241	66,2	364	100,0		11
c) The adequacy of the amount of areas/seats reserved to individual study in the University Library		54	15,3	98	27,8	125	35,5	75	21,3	352	100,0	6	17
d) The adequacy of the amount of areas/seats reserved to individual study in other buildings on campus		37	10,3	102	28,5	147	41,1	72	20,1	358	100,0	7	10
e) The clarity and adequacy of the signage system on campus		9	2,5	44	12,2	168	46,4	141	39,0	362	100,0		13

Over time comparison of average values

2020 2019

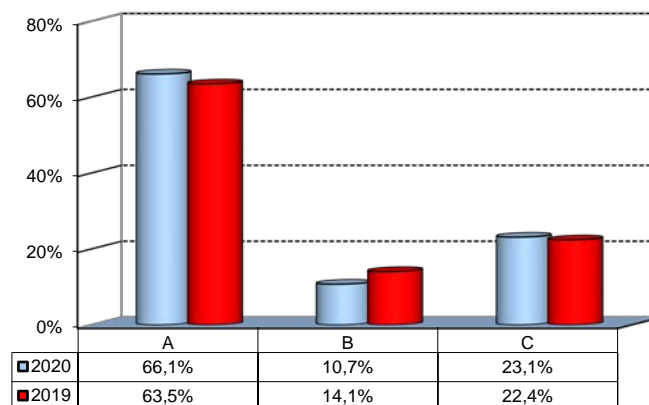


(*): the percentage shown on the graphs is calculated by excluding the responses of those who declare that they have not used the service.

Infrastructure: Classrooms, Library And Facilities

3) What is your overall opinion on the PC Labs and IT facilities provided by the University?

Answers	a.v.	%
A- Adequate in number	240	66,1%
B- Inadequate in number	39	10,7%
C- Never used	84	23,1%
Total	363	100%
NA	12	

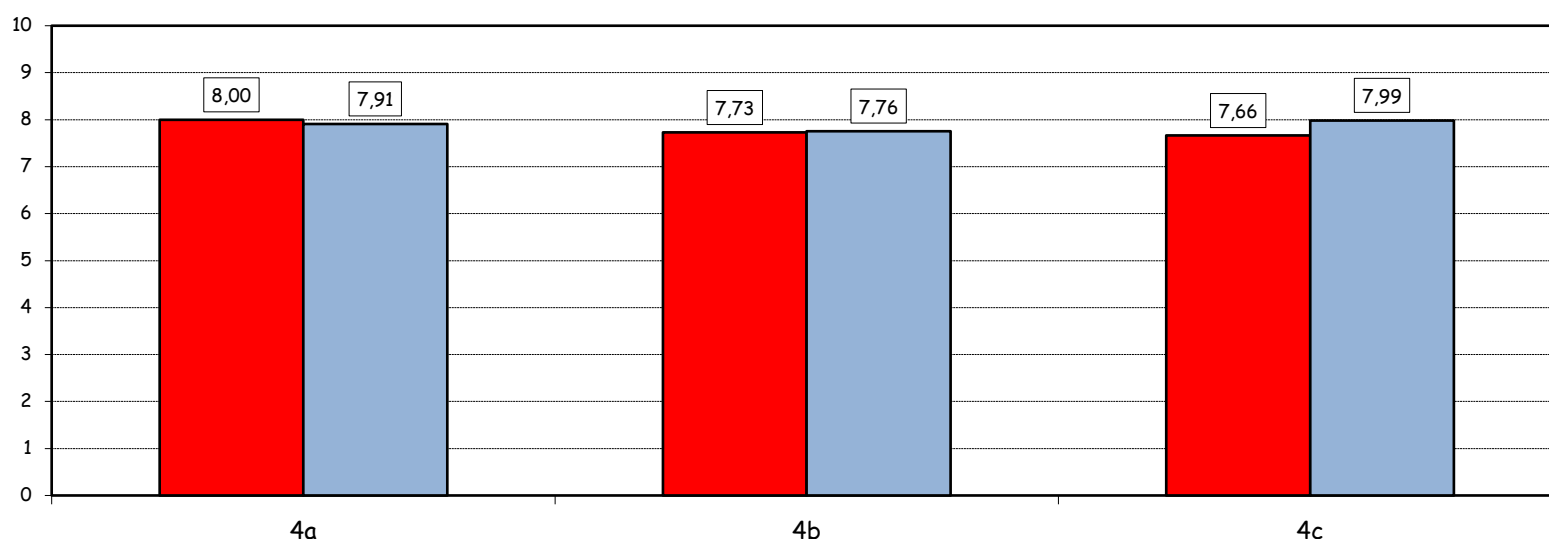


4) How would you evaluate:

Item	Answers	Negative				Positive				Total		NA
		1-2		3-4-5		6-7-8		9-10		a.v.	%	
		a.v.	%	a.v.	%	a.v.	%	a.v.	%			
a) The availability of technical staff supporting students (Tutors) in PC Labs^		4	1,5	22	8,1	134	49,3	112	41,2	272	100,0	7
b) The convenience of the PC Labs' opening hours^		3	1,1	24	9,1	142	54,0	94	35,7	263	100,0	16
c) The level of accessibility and usability of the University's IT services (Internet access points, Punto Blu, Virtual Punto Blu, wireless connection)		6	1,7	35	9,9	189	53,2	125	35,2	355	100,0	20

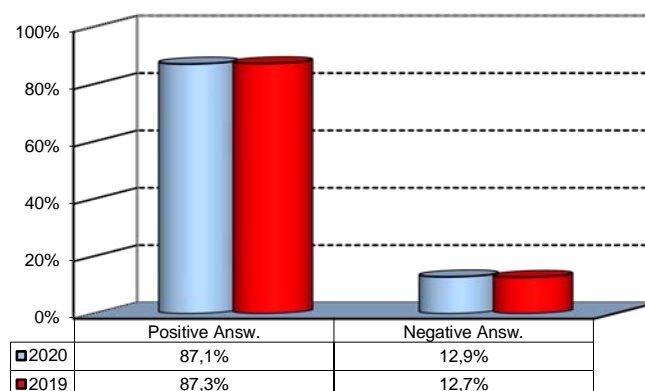
Over time comparison of average values

■ 2020 ■ 2019



5) What is your overall opinion on the Library's services, such as support for individual study?*

Answers	a.v.	%
A - Very Positive	78	21,4%
B - Quite positive	192	52,6%
C - Quite negative	34	9,3%
D - Very Negative	6	1,6%
E - Never used	55	15,1%
Total	365	100%
NA	10	



(^): Only in case of answer "A" or "B" to item no.3

(*): the percentage shown on the graphs is calculated by excluding the responses of those who declare that they have not used the service.