

EVALUATION OF THE DEGREE PROGRAM AND THE UNIVERSITY EXPERIENCE

BACHELOR IN INTERNATIONAL ECONOMICS AND FINANCE

N° QUESTIONNAIRES PROCESSED: 375

N° OF GRADUATE STUDENTS: 426

RESPONSE RATE: 88,0%



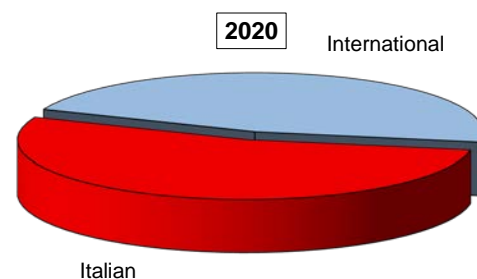
EVALUATION OF STUDENT EXPERIENCE

International Economics and Finance

General information

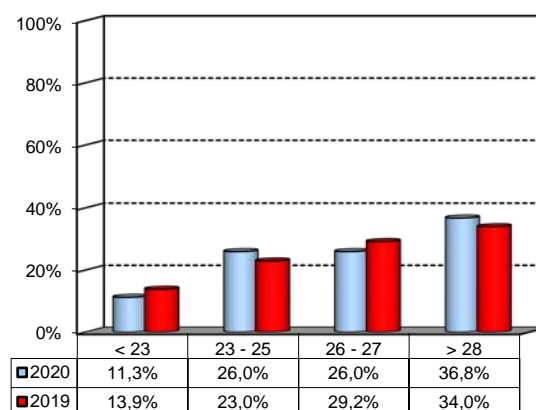
School Career

Answers	a.v.	%	
		2020	2019
Italian	109	53,4%	51,7%
International	95	46,6%	48,3%
Total	204	100%	100%
NA	0		



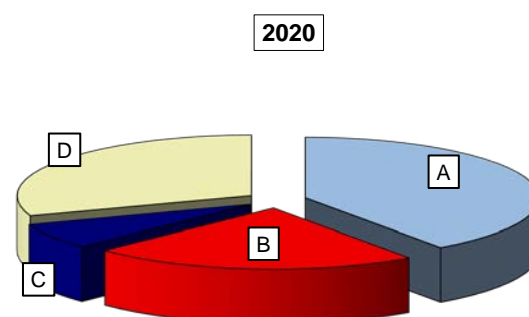
Average mark of the exams passed: (approximate average expressed in 30/30)

Answers	a.v.	%
< 23	23	11,3%
23 - 25	53	26,0%
26 - 27	53	26,0%
> 28	75	36,8%
Total	204	100%
NA	0	



How many of the courses included in your curriculum did you attend regularly?

Answers	a.v.	%	
		2020	2019
A - More than 75%	82	40,2%	66,5%
B - Between 50 and 75%	46	22,5%	23,0%
C - Between 25 and 50%	14	6,9%	7,2%
D - Less than 25%	62	30,4%	3,3%
Total	204	100%	100%
NA	0		

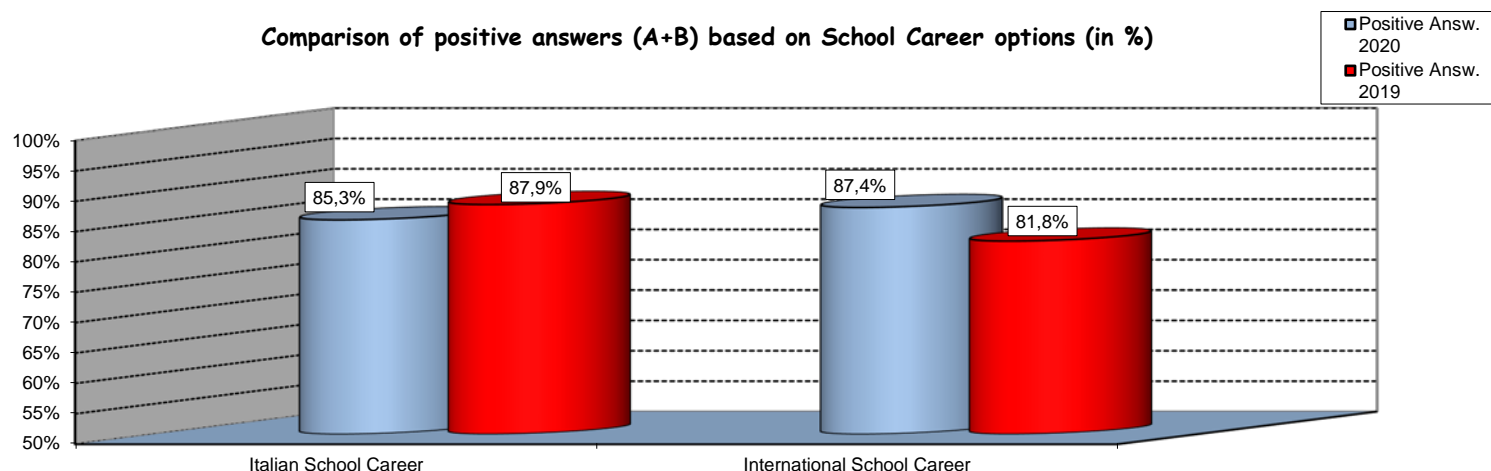


Study experience

1) Was the knowledge acquired during secondary school adequate to undertake your Bachelor program?

Answers	Italian School Career		International School Career		Total	
	a.v.	%	a.v.	%	a.v.	%
A - Definitely YES	55	50,5%	49	51,6%	104	51,0%
B - More YES than NO	38	34,9%	34	35,8%	72	35,3%
C - More NO than YES	11	10,1%	8	8,4%	19	9,3%
D - Definitely NO	5	4,6%	4	4,2%	9	4,4%
Total	109	100%	95	100%	204	100%
NA	0		0		0	

Comparison of positive answers (A+B) based on School Career options (in %)



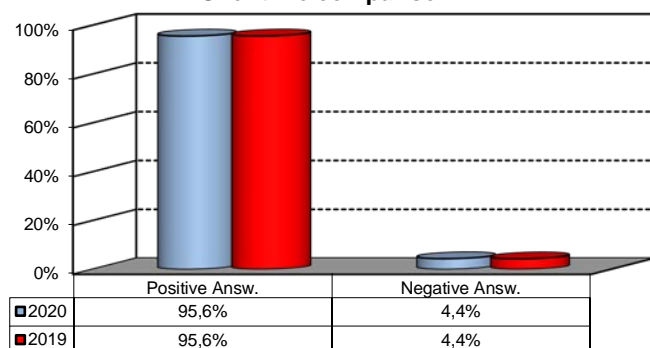
2) if you answered " More NO than YES" or "Definitely NO", indicate the subject or the subjects for which your previous knowledge revealed to be insufficient:

	a.v.	%
MATEMATICA - MODULO 1 (GENERALE)	14	20,9%
MATEMATICA - MODULO 2 (APPLICATA)	8	11,9%
ECONOMIA - MODULO 1 (MICROECONOMIA)	8	11,9%
STATISTICA	7	10,4%
Altro	30	44,8%
Total	67	100%

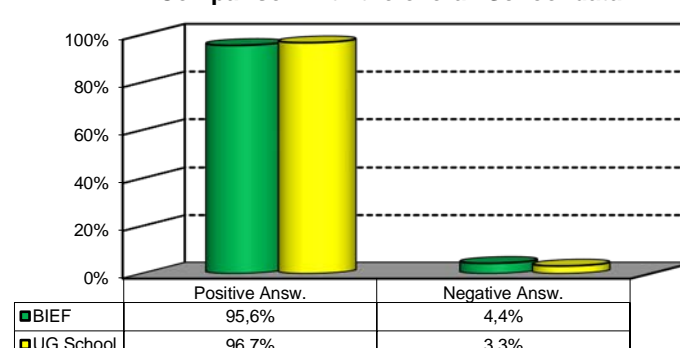
3) On the whole, do you appreciate the qualifications you acquired at the end of the Bachelor program at Bocconi?

Answers	Italian school Career		Int.nal School Career		Total	
	v.a.	%	v.a.	%	v.a.	%
A - Definitely YES	63	57,8%	56	58,9%	119	58,3%
B - More YES than NO	40	36,7%	36	37,9%	76	37,3%
C - More NO than YES	4	3,7%	3	3,2%	7	3,4%
D - Definitely NO	2	1,8%	0	0,0%	2	1,0%
Total	109	100%	95	100%	204	100%
NA	0		0		0	

Over time comparison



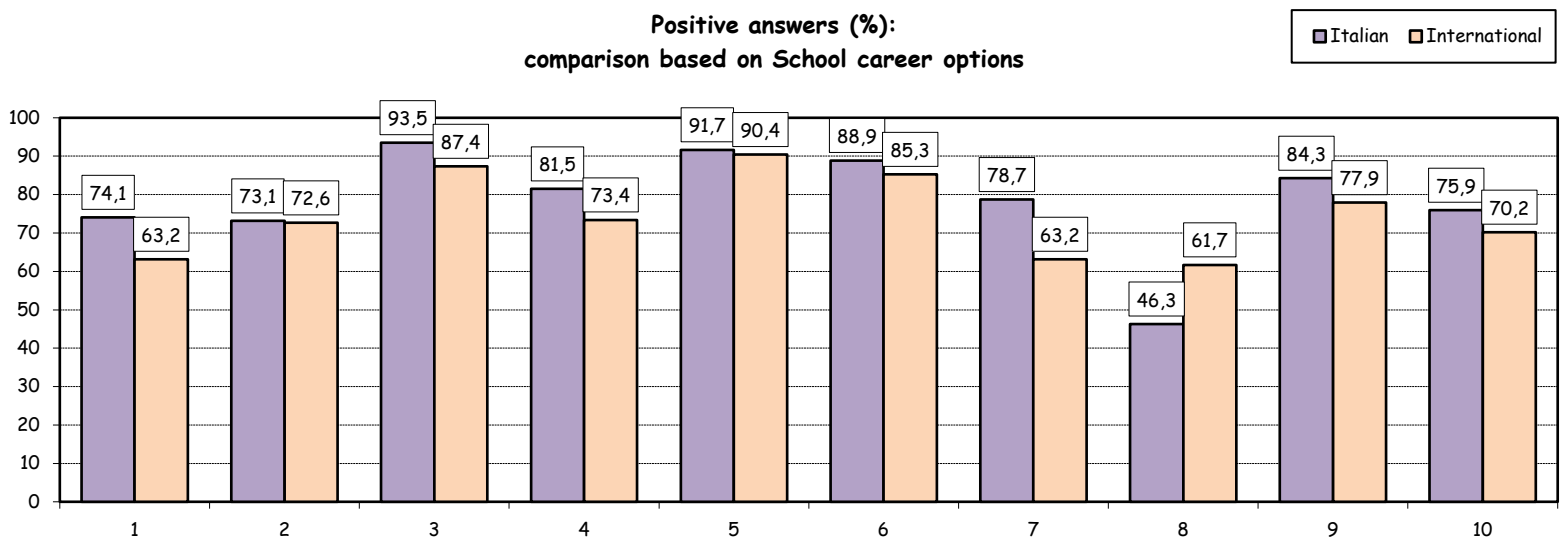
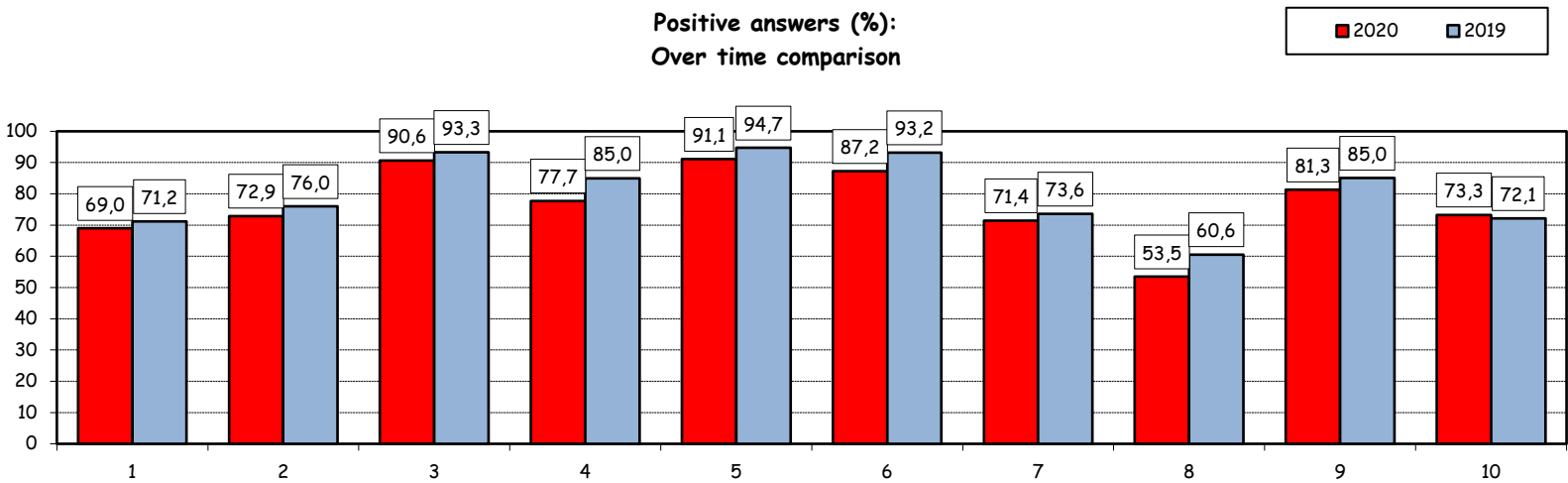
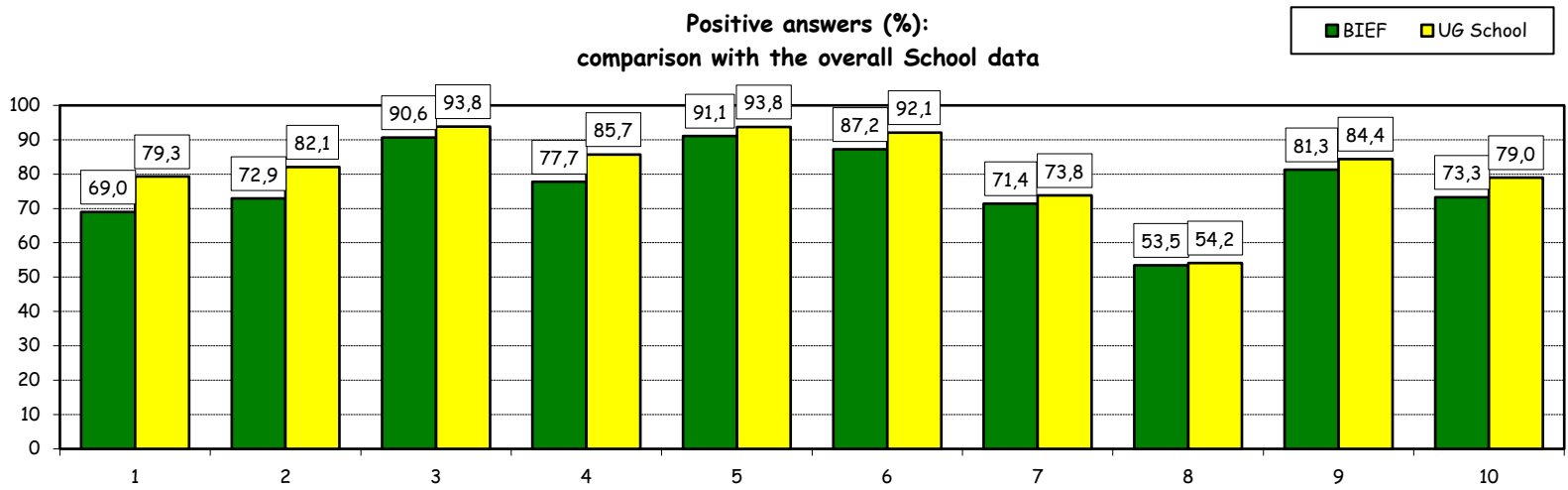
Comparison with the overall School data



Study experience

4) Do you think that your course of study at Bocconi has contributed to the development of the following skills?

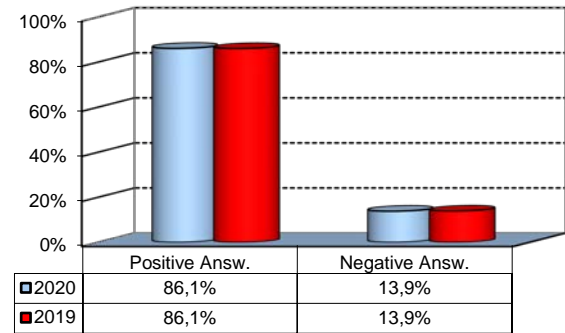
Soft Skill	Item	Definitely YES		More YES than NO		More NO than YES		Definitely NO		Total		n.a.
		a.v.	%	a.v.	%	a.v.	%	a.v.	%	a.v.	%	a.v.
1	Ability to work on a team	57	28,1	83	40,9	46	22,7	17	8,4	203	100,0	1
2	Interpersonal skills	59	29,1	89	43,8	44	21,7	11	5,4	203	100,0	1
3	Organizational skills	107	52,7	77	37,9	16	7,9	3	1,5	203	100,0	1
4	Critical thinking skills	84	41,6	73	36,1	35	17,3	10	5,0	202	100,0	2
5	Ability to analyze and select information	108	53,5	76	37,6	16	7,9	2	1,0	202	100,0	2
6	Problem-solving ability	98	48,3	79	38,9	22	10,8	4	2,0	203	100,0	1
7	Written communication skills	70	34,5	75	36,9	37	18,2	21	10,3	203	100,0	1
8	Verbal communication skills	35	17,3	73	36,1	60	29,7	34	16,8	202	100,0	2
9	Ability to cope with stress	104	51,2	61	30,0	26	12,8	12	5,9	203	100,0	1
10	Computer Skills	65	32,2	83	41,1	44	21,8	10	5,0	202	100,0	2



Study experience

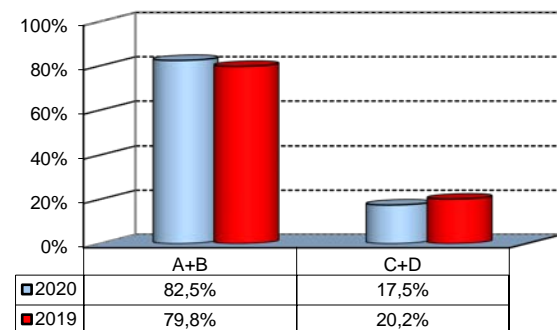
5) Do you think that the courses in your curriculum were adequately coordinated with each other?

	a.v.	%
A - Definitely YES	60	29,7%
B - More YES than NO	114	56,4%
C - More NO than YES	24	11,9%
D - Definitely NO	4	2,0%
Total	202	100%
NA	2	



6a) Do you think that the overall study load was compatible with the length of the program?

	a.v.	%
A - Definitely YES	68	34,0%
B - More YES than NO	97	48,5%
C - More NO than YES	30	15,0%
D - Definitely NO	5	2,5%
Total	200	100%
NA	4	



6b) Specifically, do you believe that the study load was excessive or insufficient?

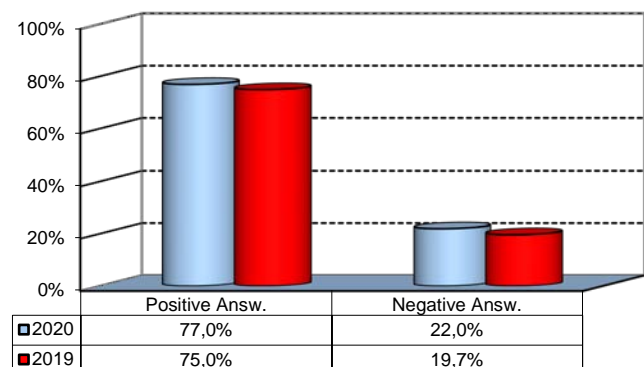
(In case of answer "C" to item no.6a)

	a.v.	% 2020	% 2019
Excessive	23	95,8%	100,0%
Insufficient	1	4,2%	0,0%
Total	24	100%	100%
NA	11		

Final Report

1) Do you think that the supervision and assistance for preparing for your final report (internship report, final paper or other) were adequate?

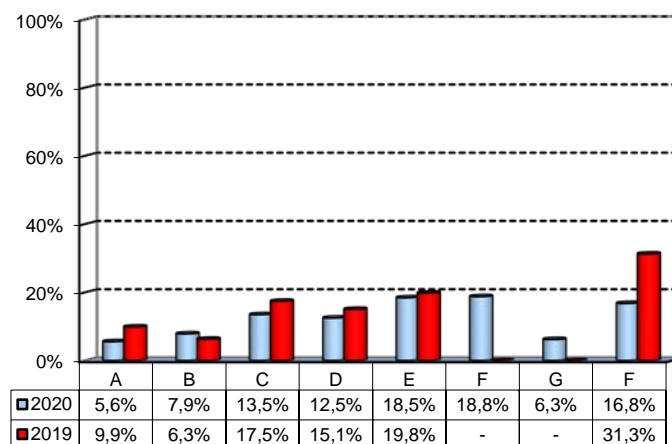
	a.v.	%
A - Definitely YES	68	34,0%
B - More YES than NO	86	43,0%
C - More NO than YES	33	16,5%
D - Definitely NO	11	5,5%
E - Supervision was not expected	2	1,0%
Total	200	100%
NA	4	



Extracurricular Activities

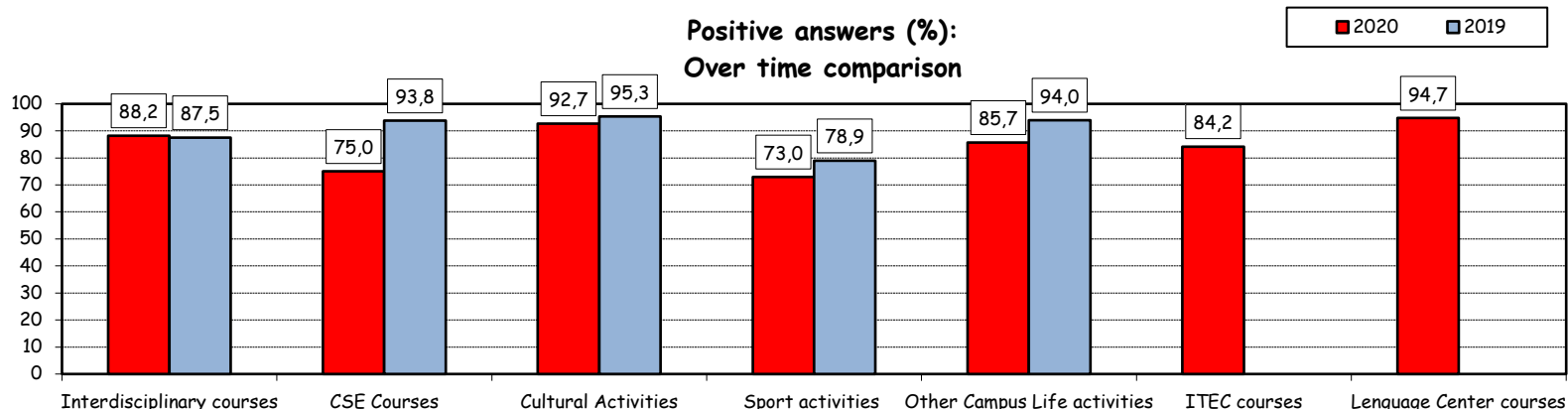
1) Which of the following extracurricular activities did you attend during the Bachelor Program?
(multiple answers admitted)

	a.v.	%
A - Interdisciplinary courses ("Sapere a tutto campo")	17	5,6%
B - Counseling and Self-Empowerment courses (CSE)	24	7,9%
C - Cultural Activities (visit museums, concerts, theatre and cinema, various issues)	41	13,5%
D - Sport activities	38	12,5%
E - Other Campus Life activities	56	18,5%
F - IT Education Center courses (ITEC)	57	18,8%
G - Language Center courses	19	6,3%
H - None	51	16,8%
Total	303	100%
NA	0	



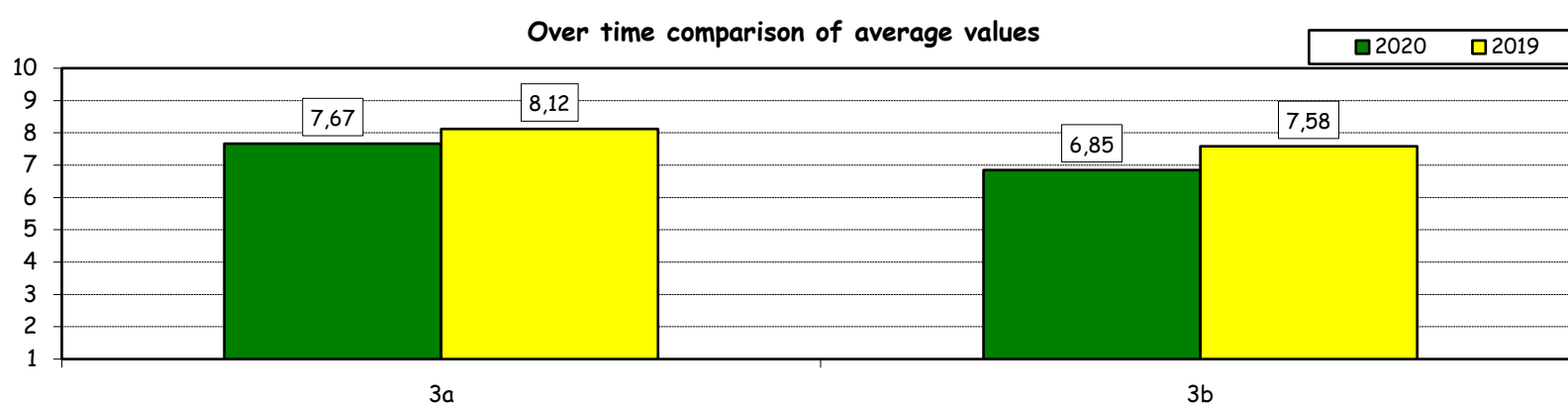
2) Do you think that the activities you took part in contributed to your cultural/educational enrichment?

	Definitely YES		More YES than NO		More NO than YES		Definitely NO		Total		NA
	a.v.	%	a.v.	%	a.v.	%	a.v.	%	a.v.	%	a.v.
A - Interdisciplinary courses	9	52,9	6	35,3	2	11,8	0	0,0	17	100,0	0
B - CSE courses	9	37,5	9	37,5	5	20,8	1	4,2	24	100,0	0
C - Cultural Activities	17	41,5	21	51,2	3	7,3	0	0,0	41	100,0	0
D - Sport activities	16	43,2	11	29,7	7	18,9	3	8,1	37	100,0	1
E - Other Campus Life activities	18	32,1	30	53,6	8	14,3	0	0,0	56	100,0	0
F - ITEC courses	21	36,8	27	47,4	9	15,8	0	0,0	57	100,0	0
G - Language Center courses	5	26,3	13	68,4	1	5,3	0	0,0	19	100,0	0



How would you evaluate:

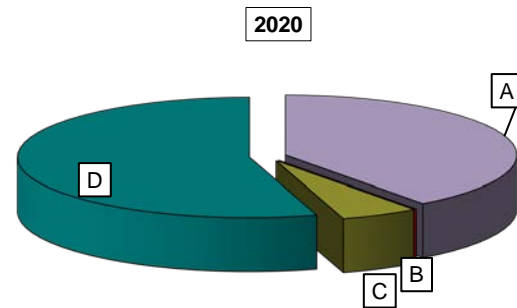
Item	Answers	Negative				Positive				Total	NA
		1-2		3-4-5		6-7-8		9-10			
		a.v.	%	a.v.	%	a.v.	%	a.v.	%		
3a) The range and interest of programmes offered	3	2,2	11	8,1	78	57,8	43	31,9	135	100,0	18
3b) The support you received from the Campus Life Office	7	5,1	28	20,6	67	49,3	34	25,0	136	100,0	17



Experience Of Studying Abroad

1) Type of experience:

Answers	a.v.	%	
		2020	2019
A - Exchange	81	39,9%	39,4%
B - Double Degree	0	0,0%	0,0%
C - Free-Mover	11	5,4%	5,8%
D - None	111	54,7%	54,8%
Total	203	100%	100%
NA	1		

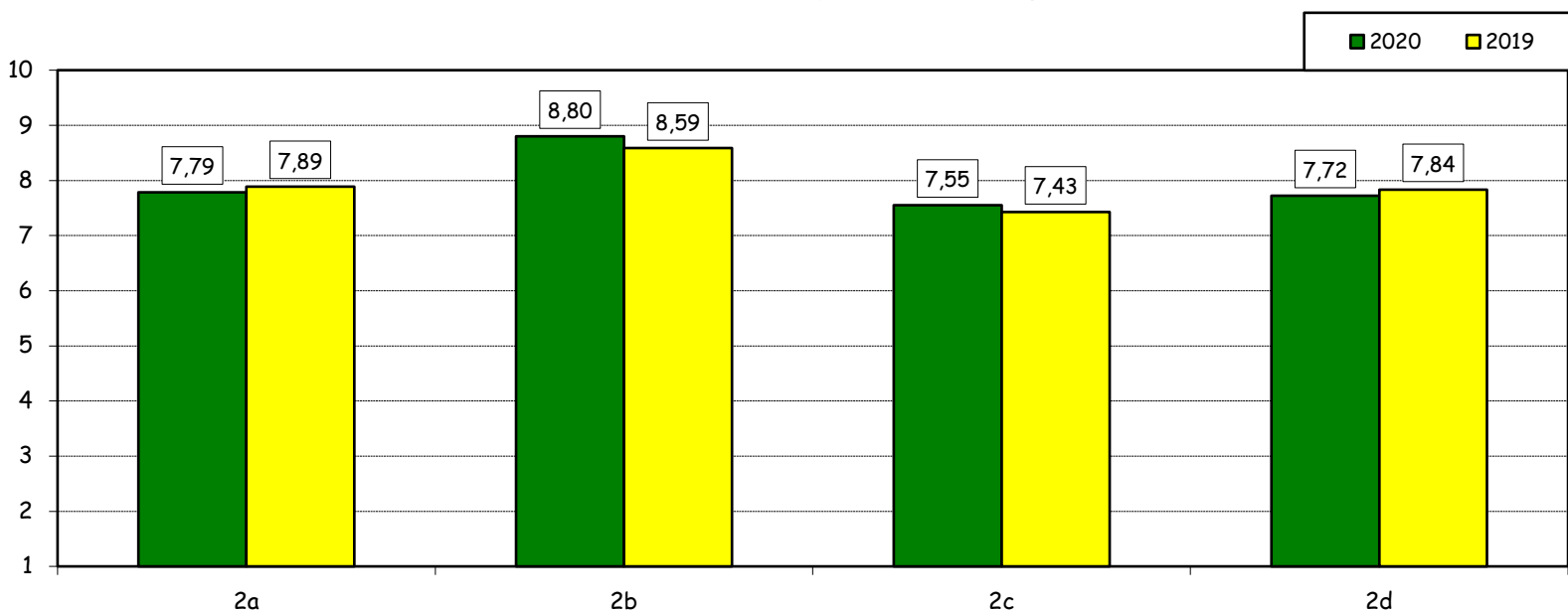


How would you evaluate:

(only A or B answers to item no.1)

Item	Answers	Negative				Positive				Total		N.A. a.v.
		1-2		3-4-5		6-7-8		9-10		a.v.	%	
		a.v.	%	a.v.	%	a.v.	%	a.v.	%			
2a) Quality and completeness of information provided through: "International Week," emails, brochures, International Relations Service web page		1	1,3	8	10,0	40	50,0	31	38,8	80	100,0	1
2b) The range and interest of programs offered.		0	0,0	2	2,5	25	31,3	53	66,3	80	100,0	1
2c) The convenience of the study abroad desk's opening hours.		3	3,8	7	9,0	39	50,0	29	37,2	78	100,0	3
2d) The support you received from Bocconi International Relations.		3	3,9	8	10,5	32	42,1	33	43,4	76	100,0	5

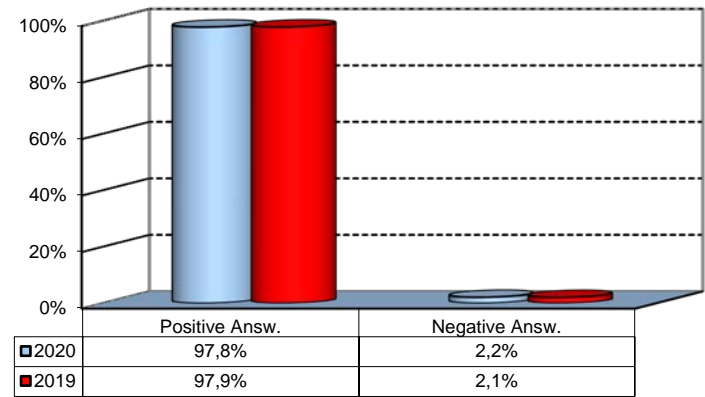
Over time comparison of average values



Experience Of Studying Abroad

3) Would you positively evaluate this experience?

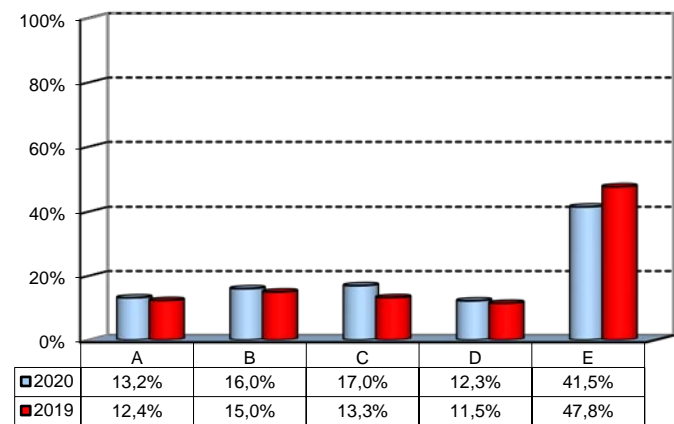
Answers	a.v.	%
A - Definitely YES	71	77,2%
B - More YES than NO	19	20,7%
C - More NO than YES	1	1,1%
D - Definitely NO	1	1,1%
Total	92	100%
NA	0	



(In case of answer "D" to item no.1)

4) Please indicate why you did not attend a period of study abroad (select all relevant reasons):

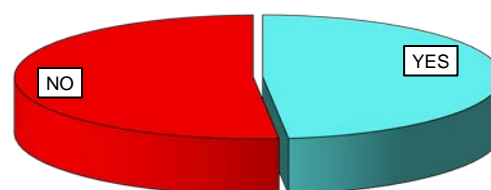
Answers	a.v.	%
A-Lack of interest in this kind of experience	14	13,2%
B-Absence of the requirements needed for participation in the program selected	17	16,0%
C-Rejection of your application	18	17,0%
D-Lack of time during the period of study	13	12,3%
E-Other (personal, family, organizational reasons, etc.)	44	41,5%
Total	106	100%
NA	5	



Internship Activities

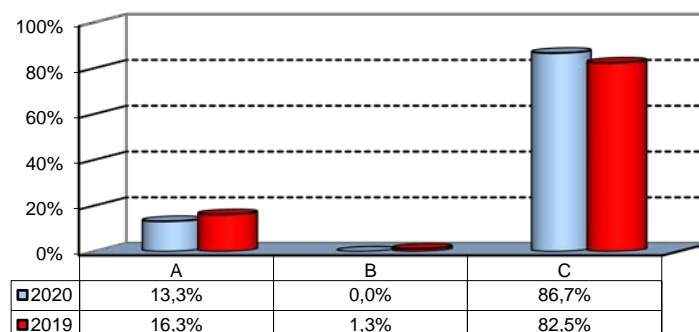
1) Did you attend an internship recognized by the Bachelor program?

	a.v.	2020	2019
YES	98	48,3%	38,9%
NO	105	51,7%	61,1%
Total	203	100%	100%
NA	1		



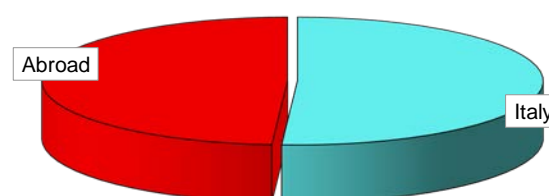
2) How did you find the internship?

	a.v.	%
A - Through the University's Placement Services*	13	13,3%
B - Through the faculty members of the degree program	0	0,0%
C - Through autonomous way then recognized by the degree program	85	86,7%
Total	98	100%
NA	0	



3) Where did you do the internship recognised by the Bachelor Program?

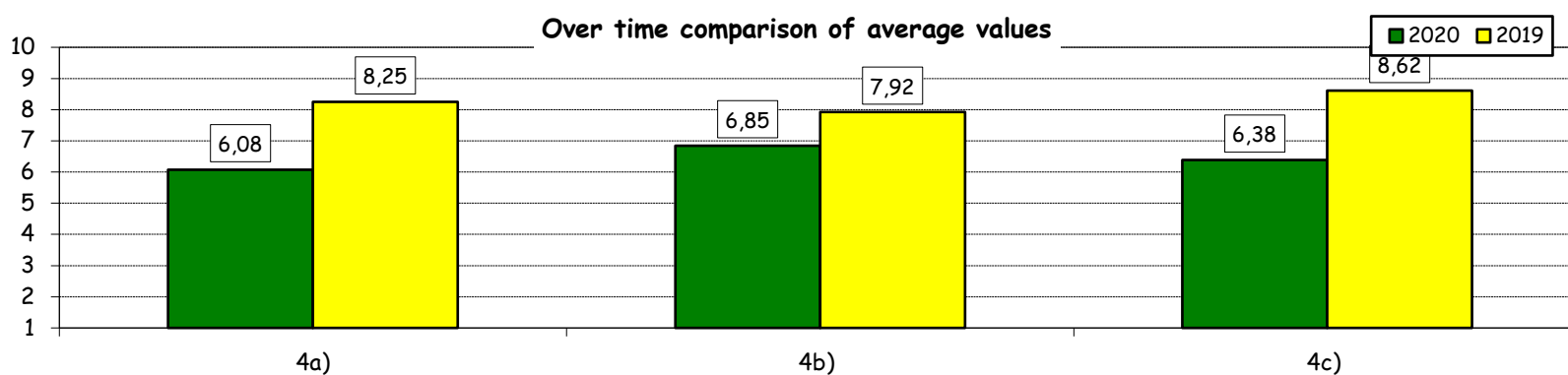
	a.v.	2020	2019
Italy	50	51,0%	44,4%
Abroad	48	49,0%	55,6%
Total	98	100%	100%
NA	0		



How would you evaluate:

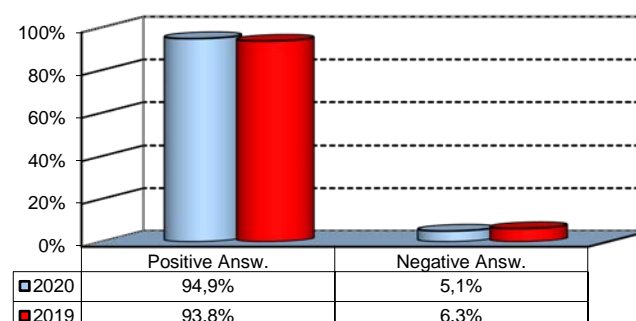
(In case of answer "A" to item no.2)

Item	Answers	Negative				Positive				Total		N.A.
		1-2		3-4-5		6-7-8		9-10		a.v.	%	a.v.
		a.v.	%	a.v.	%	a.v.	%	a.v.	%	a.v.	%	a.v.
4a) The convenience of the internship front desk's opening hours.		3	23,1	0	0,0	8	61,5	2	15,4	13	100,0	0
4b) The number and variety of opportunities offered		1	7,7	2	15,4	7	53,8	3	23,1	13	100,0	0
4c) The support you received from the Internship Office.		1	7,7	0	0,0	11	84,6	1	7,7	13	100,0	0



5) Would you positively evaluate this experience?

	a.v.	%
A - Definitely YES	65	66,3%
B - More YES than NO	28	28,6%
C - More NO than YES	3	3,1%
D - Definitely NO	2	2,0%
Total	98	100%
NA	0	



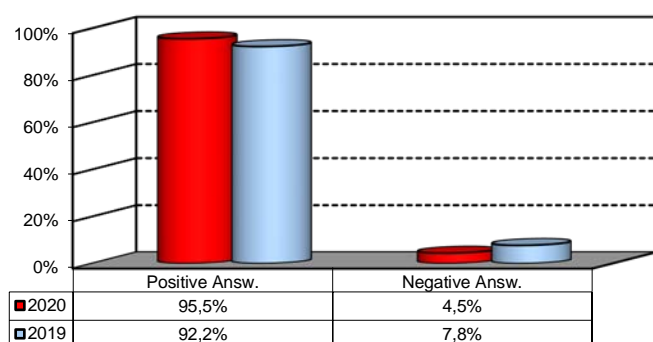
*JobGate, Internship Programs, Companies' meetings and presentations, Bocconi&Jobs, Placement Library's services, Curricular Internship Special, websites reported in the section 'Lavoro.net'

General satisfaction and short-term plans

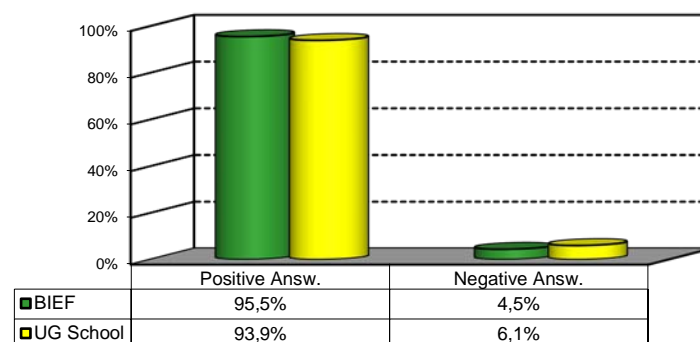
1) Are you satisfied overall with the study program you attended?

Answers	Italian School career		Int.nal School Career		Total	
	a.v.	%	a.v.	%	a.v.	%
A - Definitely YES	56	52,3%	43	45,7%	99	49,3%
B - More YES than NO	47	43,9%	46	48,9%	93	46,3%
C - More NO than YES	4	3,7%	5	5,3%	9	4,5%
D - Definitely NO	0	0,0%	0	0,0%	0	0,0%
Total	107	100%	94	100%	201	100%
NA	2		1		3	

Over time comparison



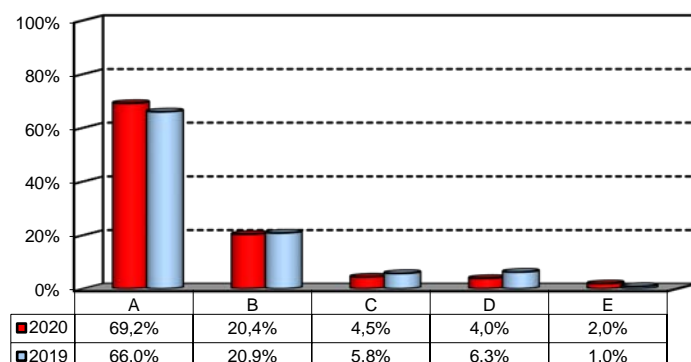
Comparison with the overall School data



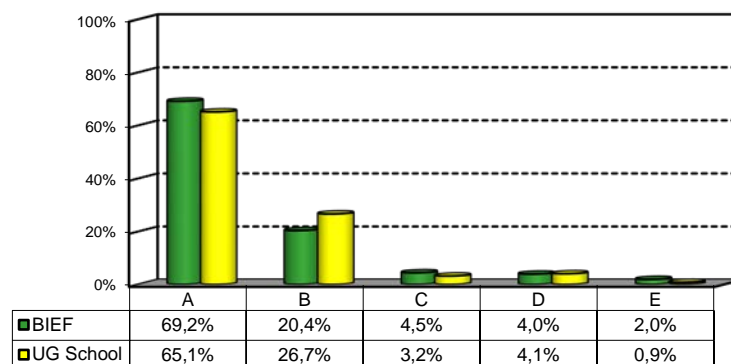
2a) If you could go back in time, would you enroll in the University again?

Answers	Italian School career		Int.nal School Career		Total	
	a.v.	%	a.v.	%	a.v.	%
A - YES, in the same Bachelor Program at this University	78	72,9%	61	64,9%	139	69,2%
B - YES, in another Program at this University	21	19,6%	20	21,3%	41	20,4%
C - YES, in the same Program but at another University	2	1,9%	7	7,4%	9	4,5%
D - YES, in another Program at another University	3	2,8%	5	5,3%	8	4,0%
E - NO, I would not enrol in university anymore	3	2,8%	1	1,1%	4	2,0%
Total	107	100%	94	100%	201	100%
NA	2		1		3	

Over time comparison



Comparison with the overall School data



General satisfaction and short-term plans

(In case of answer "B" to item no.2a)

2b) Which program would you enroll in at this University?

Answers	Italian School career		Int.nal School Career		Total	
	v.a.	%	v.a.	%	v.a.	%
BEMACS	7	36,8%	5	26,3%	12	31,6%
BIEF	0	0,0%	0	0,0%	0	0,0%
BIEM	2	10,5%	9	47,4%	11	28,9%
BIG	0	0,0%	2	10,5%	2	5,3%
CLEACC	2	10,5%	0	0,0%	2	5,3%
CLEAM	0	0,0%	0	0,0%	0	0,0%
CLEF	1	5,3%	0	0,0%	1	2,6%
CLES-BESS	6	31,6%	2	10,5%	8	21,1%
CLMG	0	0,0%	0	0,0%	0	0,0%
WBB	1	5,3%	1	5,3%	2	5,3%
Total	19	100%	19	100%	38	100%

(In case of answer "C", "D" or "E" to item no.2a)

2c) Why would you make a different choice?

Answers	Italian School career		Int.nal School Career		Total		
	v.a.	%	v.a.	%	2020 v.a.	2020 %	2019 %
A - My interest has changed during this time / I discovered that I have different attitudes	3	42,9%	3	23,1%	6	30,0%	33,3%
B - The Bachelor program did not mirror my expectations	1	14,3%	2	15,4%	3	15,0%	33,3%
C- I have not been admitted to the Bachelor Program selected as first-choice.	1	14,3%	0	0,0%	1	5,0%	0,0%
D- The campus and its facilities and services were not up to my expectations	0	0,0%	5	38,5%	5	25,0%	22,2%
E- I would have preferred to attend the same Bachelor Program but taught in English.	0	0,0%	0	0,0%	0	0,0%	0,0%
F - Other reasons	2	28,6%	3	23,1%	5	25,0%	11,1%
Total	7	100%	13	100%	20	100%	100%
NA	1		0		1		

F- Other reasons:

at almost every exam I did, I felt like I was tested on how well I prepared for the FORMAT of the exam and not on the actual topic that the class offered. It was about the exam and NEVER about actual knowledge that I was supposed to gain.

Campus and facilities were not up my expectations. hard to communicate with some teachers due to language barriers. the community is very regimented and not very progressive.

I wanted to study medicine

I would have do it in Italian

It did not mirror my expectations in the way it was carried out. For ex I expected a more active learning, not just mainly theoretical lessons. Also I expected my grade to be distributed over different activities, not just by (usually) one exam

non compresi i corsi svolti al CLES

personal

Possibilita di rifiuto del voto

Too expensive.

General satisfaction and short-term plans

3) In the near future do you intend to:

	Italian School career		Int.nal School Career		Total		2019 %
	a.v.	%	a.v.	%	2020 a.v.	%	
A- To go on with university studies at Bocconi (Master of Science, one-year Master of Science)	58	56,9%	15	16,9%	73	38,2%	36,4%
B- To go on with university studies at another Italian University	3	2,9%	1	1,1%	4	2,1%	1,9%
C- To go on with university studies abroad	34	33,3%	31	34,8%	65	34,0%	40,7%
D - To immediately look for a job	3	2,9%	19	21,3%	22	11,5%	10,5%
E - To accept a job proposal received	2	2,0%	19	21,3%	21	11,0%	9,3%
F - To continue to do the job started during this degree program	2	2,0%	4	4,5%	6	3,1%	1,2%
Total	102	100%	89	100%	191	100%	100%
NA	7		6		13		

4) If you intend to continue your university studies at another University (in Italy or abroad), what are the reasons for your choice? (multiple answers admitted)

	Italian School career		Int.nal School Career		Total		2019 %
	a.v.	%	a.v.	%	2020 a.v.	%	
A - I would like to attend a more prestigious university	11	16,4%	7	9,0%	18	12,4%	17,2%
B - I would like to build a strong international curriculum	33	49,3%	27	34,6%	60	41,4%	46,6%
C- I can not bear the cost of studies (tuition fees and cost of living)	3	4,5%	7	9,0%	10	6,9%	5,2%
D - I can not bear the cost of studies (tuition fees and cost of living)	2	3,0%	5	6,4%	7	4,8%	6,0%
E- The administrative services are not sufficiently efficient	3	4,5%	7	9,0%	10	6,9%	3,4%
F - I think that the contents of Bocconi's MSc programs do not differ much from those of undergraduate programs	8	11,9%	10	12,8%	18	12,4%	9,5%
G - Other reasons	7	10,4%	15	19,2%	22	15,2%	12,1%
Total	67	100%	78	100%	145	100%	100%
NA	0		0		0		

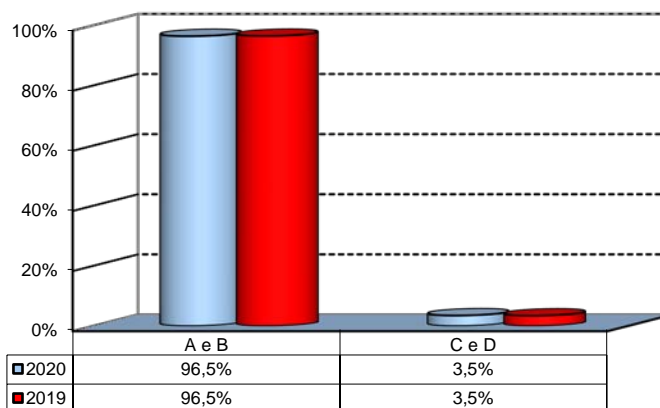
G - Other reasons:

Being an international students who is not planning on working in Italy, I believe having only Italian degrees is not the best choice.
better opportunities outside of italy
Bocconi+Politecnico
Change of career/studies
Desire to pursue a second bachelor degree in engineering.
Get more international exposure
Go somewhere else
I already have Bocconi on my CV so new experience
I corsi magistrali della Bocconi sono a mio parere troppo teorici e insegnano invece poco dal punto di vista pratico. Penso che le conoscenze apprese in triennale vadano poi integrate con una laurea magistrale che sappia dare anche delle skill diverse da quelle tecniche. Una volta imparate le basi economiche cerco un'universita che mi possa spiegare come applicarle e che sia molto pi dedicata al placement. Inoltre, nelle universita estere - durante i processi di application - mi sono sentita molto pi apprezzata rispetto alla Bocconi in cui la mia application magistrale sarebbe composta unicamente da due numeri (matricola, GPA). Dopo tre anni passati in Bocconi mi sembra quasi assurdo che l'unico criterio di scelta sia la media senza minimamente considerare il profilo, mentre le universita straniere mi hanno fatto sentire scelta per chi sono e non unicamente la media dei miei voti, motivo principale per cui ho deciso di andarmene.
I prefer a specitic degree about Monetary Economic
I want to enter STEM
I want to live in the UK
I was not accepted to the MSc program selected
I would like to attend a 1-year MSc programme
Lack of support for international students
LBS is better
Master of one year, better career service
more practical approach / different program
need to work at another country
Non ho i prerequisiti necessari per essere ammesso
Strategic choice of another prosperous country
The other university has a better career service

Infrastructure: Classrooms, Library And Facilities

1) What is your opinion about the classrooms where lessons and other teaching activities have been held?*

Answers	a.v.	%
A - Always or nearly always adequate	115	57,8%
B - Often adequate	76	38,2%
C - Rarely adequate	6	3,0%
D - Never adequate	1	0,5%
E - I did not use them	1	0,5%
Total	199	100%
NA	5	

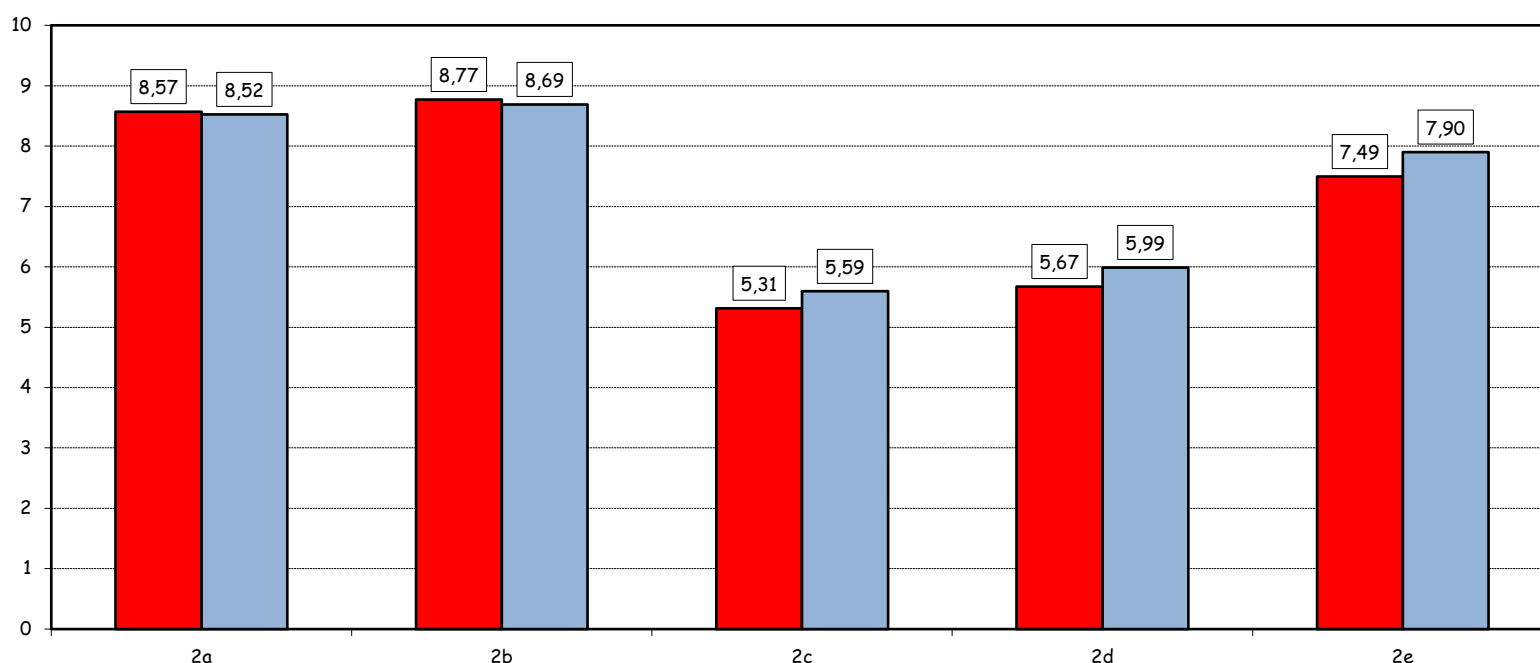


2) How would you evaluate:

Item	Answers	Negative				Positive				Total	NA	N.R.	
		1-2		3-4-5		6-7-8		9-10					
		a.v.	%	a.v.	%	a.v.	%	a.v.	%				
a) The adequacy of the audio and multimedia systems (e.g. instructor's computer, projectors, video players) installed in the classrooms		2	1,0	4	2,0	80	40,4	112	56,6	198	100,0		6
b) The cleanliness of classrooms and of other common areas on campus (corridors, halls, study rooms)		3	1,5	5	2,5	51	25,9	138	70,1	197	100,0		7
c) The adequacy of the amount of areas/seats reserved to individual study in the University Library		44	22,7	57	29,4	62	32,0	31	16,0	194	100,0	3	7
d) The adequacy of the amount of areas/seats reserved to individual study in other buildings on campus		33	17,1	57	29,5	69	35,8	34	17,6	193	100,0	4	7
e) The clarity and adequacy of the signage system on campus		9	4,6	24	12,2	88	44,9	75	38,3	196	100,0		8

Over time comparison of average values

2020 2019

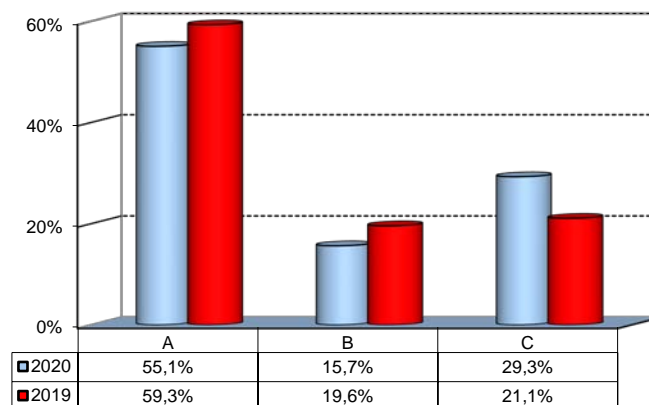


(*): the percentage shown on the graphs is calculated by excluding the responses of those who declare that they have not used the service.

Infrastructure: Classrooms, Library And Facilities

3) What is your overall opinion on the PC Labs and IT facilities provided by the University?

Answers	a.v.	%
A- Adequate in number	109	55,1%
B- Inadequate in number	31	15,7%
C- Never used	58	29,3%
Total	198	100%
NA	6	

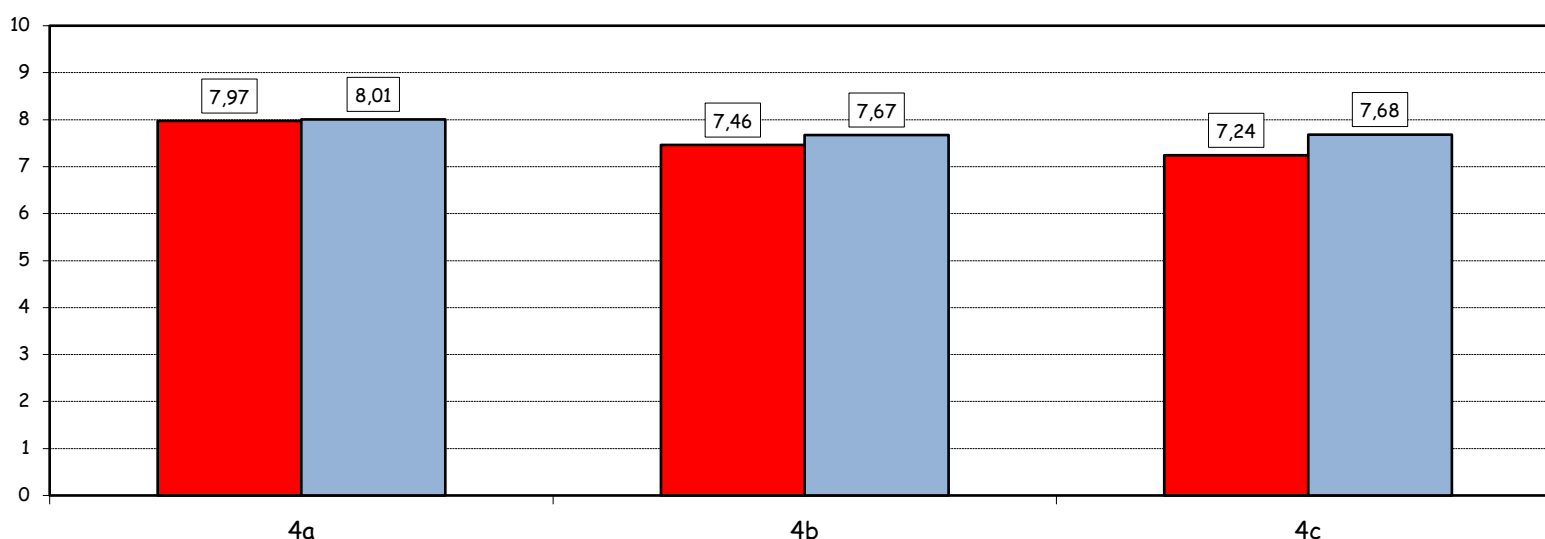


4) How would you evaluate:

Answers	Negative				Positive				Total		NA
	1-2		3-4-5		6-7-8		9-10				
	a.v.	%	a.v.	%	a.v.	%	a.v.	%	a.v.	%	
a) The availability of technical staff supporting students (Tutors) in PC Labs^	1	0,7	8	5,9	71	52,2	56	41,2	136	100,0	4
b) The convenience of the PC Labs' opening hours^	4	3,0	11	8,1	77	57,0	43	31,9	135	100,0	5
c) The level of accessibility and usability of the University's IT services (Internet access points, Punto Blu, Virtual Punto Blu, wireless connection)	8	4,1	30	15,4	103	52,8	54	27,7	195	100,0	9

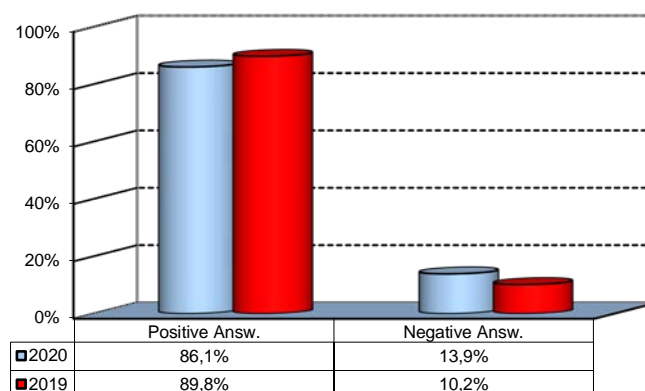
Over time comparison of average values

■ 2020 ■ 2019



5) What is your overall opinion on the Library's services, such as support for individual study?*

Answers	a.v.	%
A - Very Positive	40	20,2%
B - Quite positive	102	51,5%
C - Quite negative	19	9,6%
D - Very Negative	4	2,0%
E - Never used	33	16,7%
Total	198	100%
NA	6	



(^): Only in case of answer "A" or "B" to item no.3

(*): the percentage shown on the graphs is calculated by excluding the responses of those who declare that they have not used the service.