

## EVALUATION OF THE DEGREE PROGRAM AND THE UNIVERSITY EXPERIENCE

### BACHELOR IN WORLD BACHELOR IN BUSINESS Graduation year 2020

N° QUESTIONNAIRES PROCESSED: 17

N° OF GRADUATE STUDENTS: 52

RESPONSE RATE: 32,7%



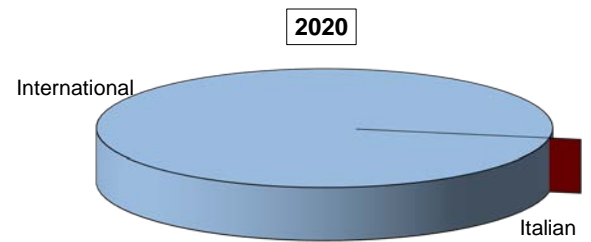
# EVALUATION OF STUDENT EXPERIENCE

## World Bachelor in Business

### General information

#### School Career

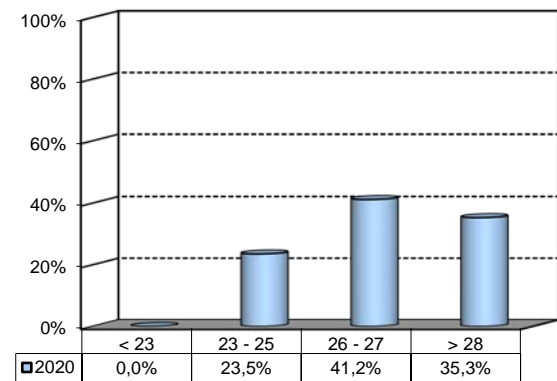
Answers	a.v.	%	
		2020	2019
Italian	0	0,0%	20,0%
International	17	100,0%	80,0%
<b>Total</b>	<b>17</b>	<b>100%</b>	<b>100%</b>
NA	0		



#### Average mark of the exams passed:

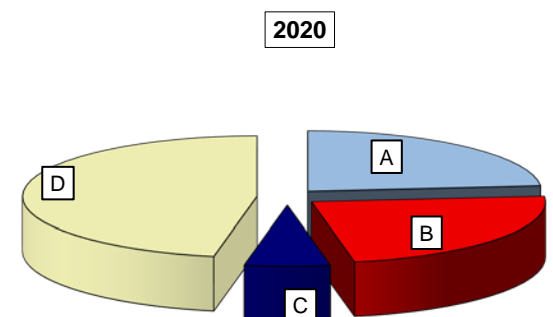
(approximate average expressed in 30/30)

Answers	a.v.	%
< 23	0	0,0%
23 - 25	4	23,5%
26 - 27	7	41,2%
> 28	6	35,3%
<b>Total</b>	<b>17</b>	<b>100%</b>
NA	0	



#### How many of the courses included in your curriculum did you attend regularly?

Answers	a.v.	%	
		2020	
A - More than 75%	4	23,5%	
B - Between 50 and 75%	4	23,5%	
C - Between 25 and 50%	1	5,9%	
D - Less than 25%	8	47,1%	
<b>Total</b>	<b>17</b>	<b>100%</b>	
NA	0		

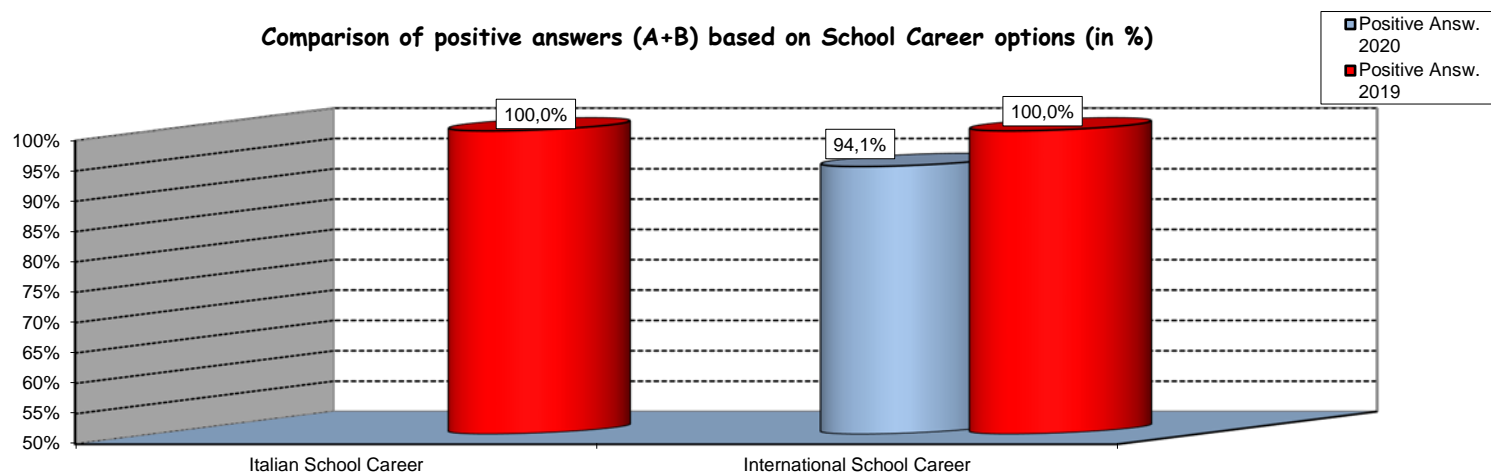


## Study experience

1) Was the knowledge acquired during secondary school adequate to undertake your Bachelor program?

Answers	Italian School Career		International School Career		Total	
	a.v.	%	a.v.	%	a.v.	%
A - Definitely YES	0	0,0%	9	52,9%	9	52,9%
B - More YES than NO	0	0,0%	7	41,2%	7	41,2%
C - More NO than YES	0	0,0%	0	0,0%	0	0,0%
D - Definitely NO	0	0,0%	1	5,9%	1	5,9%
<b>Total</b>	<b>0</b>	<b>0%</b>	<b>17</b>	<b>100%</b>	<b>17</b>	<b>100%</b>
NA	0		0		0	

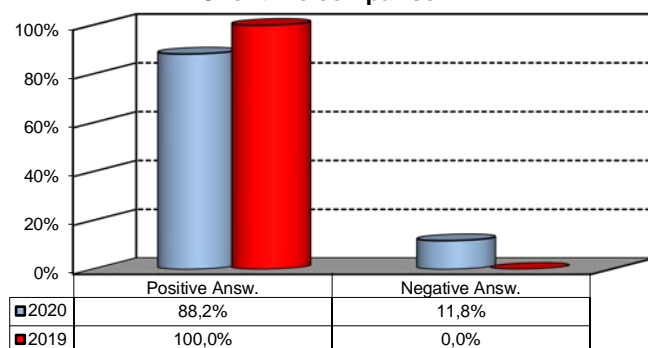
Comparison of positive answers (A+B) based on School Career options (in %)



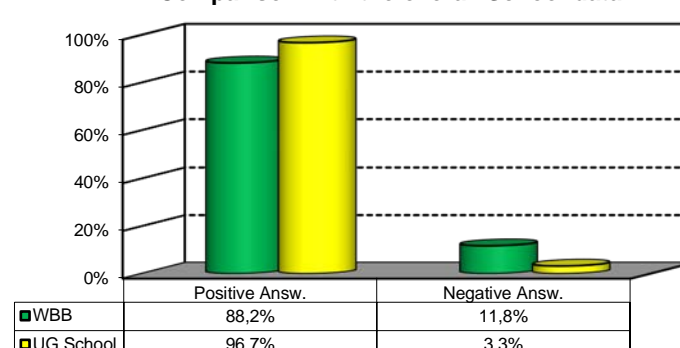
3) On the whole, do you appreciate the qualifications you acquired at the end of the Bachelor program at Bocconi?

Answers	Italian school Career		Int.nal School Career		Total	
	v.a.	%	v.a.	%	v.a.	%
A - Definitely YES	0	0,0%	9	52,9%	9	52,9%
B - More YES than NO	0	0,0%	6	35,3%	6	35,3%
C - More NO than YES	0	0,0%	2	11,8%	2	11,8%
D - Definitely NO	0	0,0%	0	0,0%	0	0,0%
<b>Total</b>	<b>0</b>	<b>0%</b>	<b>17</b>	<b>100%</b>	<b>17</b>	<b>100%</b>
NA	0		0		0	

Over time comparison



Comparison with the overall School data

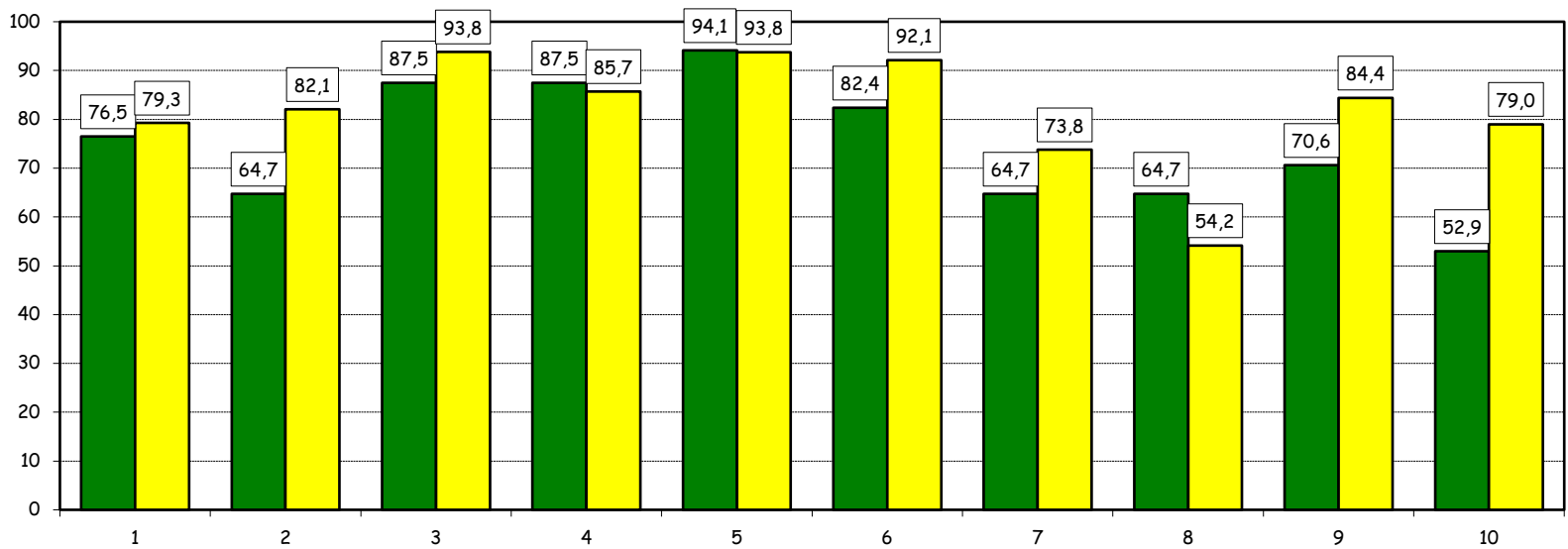
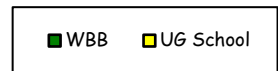


## Study experience

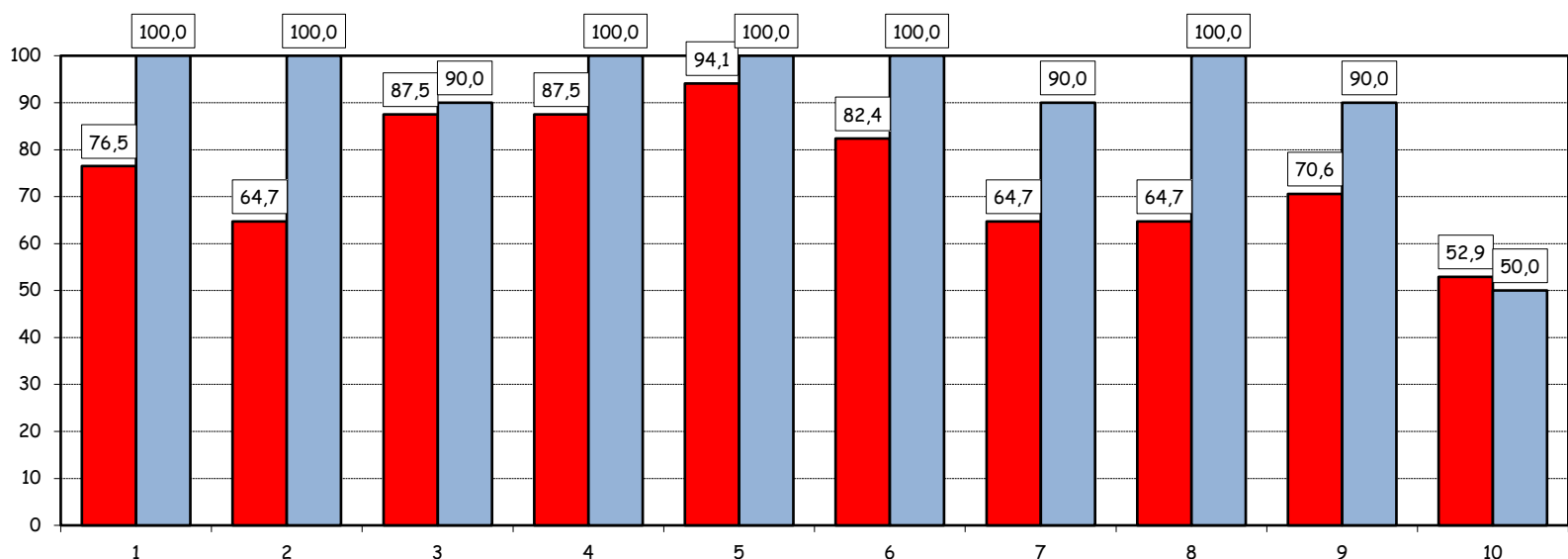
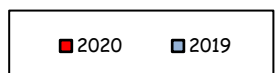
4) Do you think that your course of study at Bocconi has contributed to the development of the following skills?

Soft Skill	Item	Definitely YES		More YES than NO		More NO than YES		Definitely NO		Total		n.a.
		a.v.	%	a.v.	%	a.v.	%	a.v.	%	a.v.	%	a.v.
1	Ability to work on a team	5	29,4	8	47,1	3	17,6	1	5,9	17	100,0	0
2	Interpersonal skills	5	29,4	6	35,3	5	29,4	1	5,9	17	100,0	0
3	Organizational skills	7	43,8	7	43,8	1	6,3	1	6,3	16	100,0	1
4	Critical thinking skills	7	43,8	7	43,8	2	12,5	0	0,0	16	100,0	1
5	Ability to analyze and select information	9	52,9	7	41,2	1	5,9	0	0,0	17	100,0	0
6	Problem-solving ability	9	52,9	5	29,4	3	17,6	0	0,0	17	100,0	0
7	Written communication skills	5	29,4	6	35,3	6	35,3	0	0,0	17	100,0	0
8	Verbal communication skills	4	23,5	7	41,2	6	35,3	0	0,0	17	100,0	0
9	Ability to cope with stress	7	41,2	5	29,4	4	23,5	1	5,9	17	100,0	0
10	Computer Skills	2	11,8	7	41,2	5	29,4	3	17,6	17	100,0	0

**Positive answers (%):  
comparison with the overall School data**



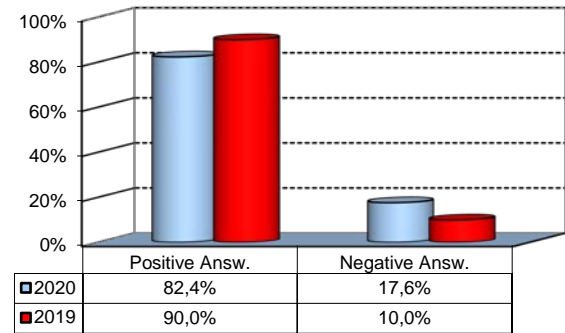
**Positive answers (%):  
Over time comparison**



## Study experience

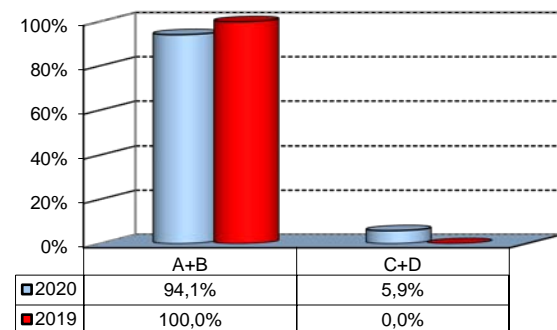
5) Do you think that the courses in your curriculum were adequately coordinated with each other?

	a.v.	%
A - Definitely YES	7	41,2%
B - More YES than NO	7	41,2%
C - More NO than YES	2	11,8%
D - Definitely NO	1	5,9%
<b>Total</b>	<b>17</b>	<b>100%</b>
NA	0	



6a) Do you think that the overall study load was compatible with the length of the program?

	a.v.	%
A - Definitely YES	4	23,5%
B - More YES than NO	12	70,6%
C - More NO than YES	1	5,9%
D - Definitely NO	0	0,0%
<b>Total</b>	<b>17</b>	<b>100%</b>
NA	0	



6b) Specifically, do you believe that the study load was excessive or insufficient?

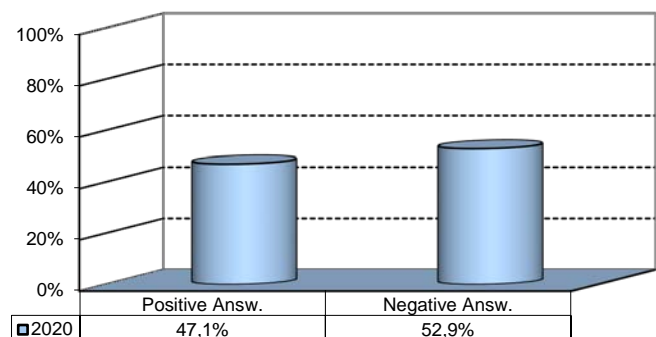
(In case of answer "C" to item no.6a)

	a.v.	% 2020	% 2019
Excessive	1	100,0%	0,0%
Insufficient	0	0,0%	0,0%
<b>Total</b>	<b>1</b>	<b>100%</b>	<b>0%</b>
NA	0		

## Final Report

1) Do you think that the supervision and assistance for preparing for your final report (internship report, final paper or other) were adequate?

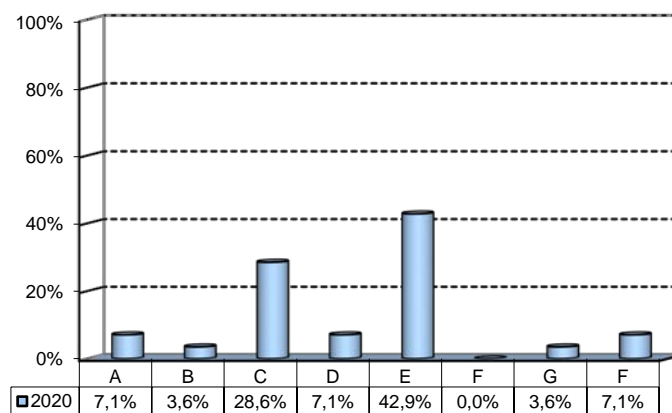
	a.v.	%
A - Definitely YES	4	23,5%
B - More YES than NO	4	23,5%
C - More NO than YES	6	35,3%
D - Definitely NO	3	17,6%
E - Supervision was not expected	0	0,0%
<b>Total</b>	<b>17</b>	<b>100%</b>
NA	0	



## Extracurricular Activities

1) Which of the following extracurricular activities did you attend during the Bachelor Program?  
(multiple answers admitted)

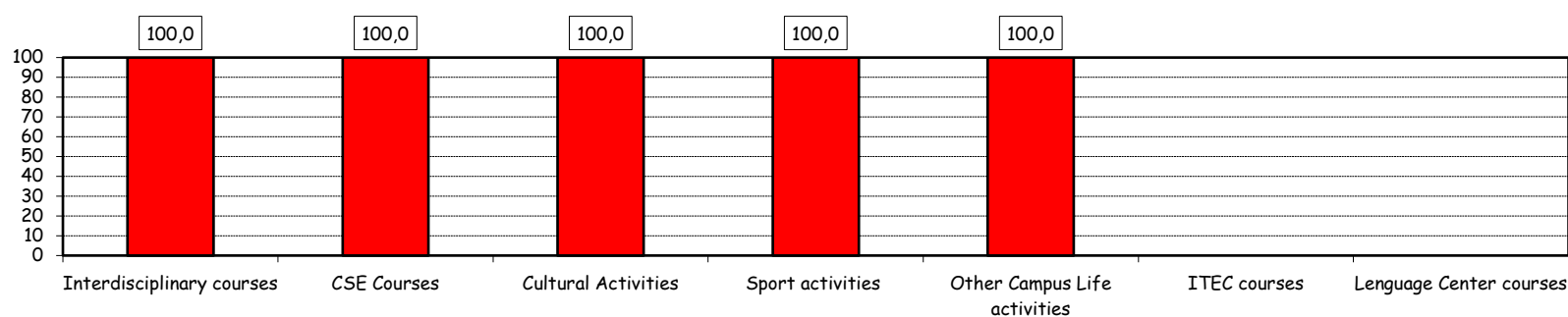
	a.v.	%
A - Interdisciplinary courses ("Sapere a tutto campo")	2	7,1%
B - Counseling and Self-Empowerment courses (CSE)	1	3,6%
C - Cultural Activities (visit museums, concerts, theatre and cinema, various issues)	8	28,6%
D - Sport activities	2	7,1%
E - Other Campus Life activities	12	42,9%
F - IT Education Center courses (ITEC)	0	0,0%
G - Language Center courses	1	3,6%
H - None	2	7,1%
<b>Total</b>	<b>28</b>	<b>100%</b>
NA	0	



2) Do you think that the activities you took part in contributed to your cultural/educational enrichment?

	Definitely YES		More YES than NO		More NO than YES		Definitely NO		Total		NA
	a.v.	%	a.v.	%	a.v.	%	a.v.	%	a.v.	%	a.v.
A - Interdisciplinary courses	2	100,0	0	0,0	0	0,0	0	0,0	2	100,0	0
B - CSE courses	0	0,0	1	100,0	0	0,0	0	0,0	1	100,0	0
C - Cultural Activities	4	50,0	4	50,0	0	0,0	0	0,0	8	100,0	0
D - Sport activities	1	50,0	1	50,0	0	0,0	0	0,0	2	100,0	0
E - Other Campus Life activities	6	50,0	6	50,0	0	0,0	0	0,0	12	100,0	0
F - ITEC courses	0	0,0	0	0,0	0	0,0	0	0,0	0	0,0	0
G - Language Center courses	0	0,0	0	0,0	1	100,0	0	0,0	1	100,0	0

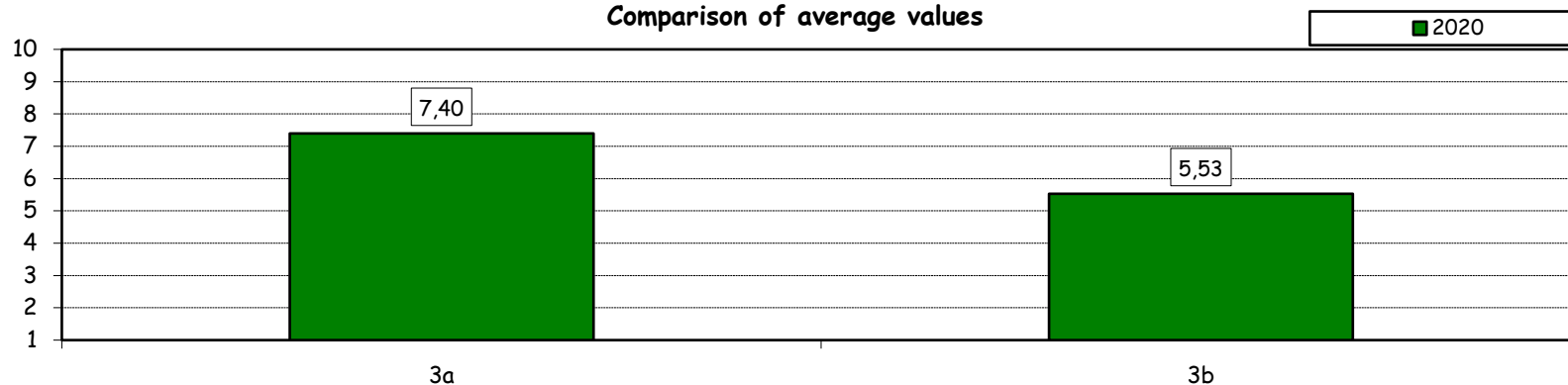
Positive answers (%)



How would you evaluate:

Item	Answers	Negative				Positive				Total		NA
		1-2		3-4-5		6-7-8		9-10		a.v.	%	
		a.v.	%	a.v.	%	a.v.	%	a.v.	%			
3a) The range and interest of programmes offered		0	0,0	1	6,7	11	73,3	3	20,0	15	100,0	0
3b) The support you received from the Campus Life Office		3	20,0	4	26,7	6	40,0	2	13,3	15	100,0	0

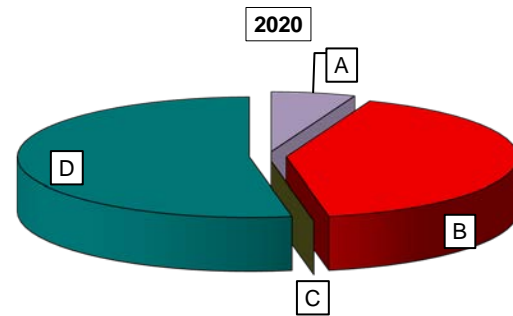
Comparison of average values



## Experience Of Studying Abroad

### 1) Type of experience:

Answers	%	
	a.v.	2020
A - Exchange	1	5,9%
B - Double Degree	7	41,2%
C - Free-Mover	0	0,0%
D - None	9	52,9%
<b>Total</b>	<b>17</b>	<b>100%</b>
NA	0	

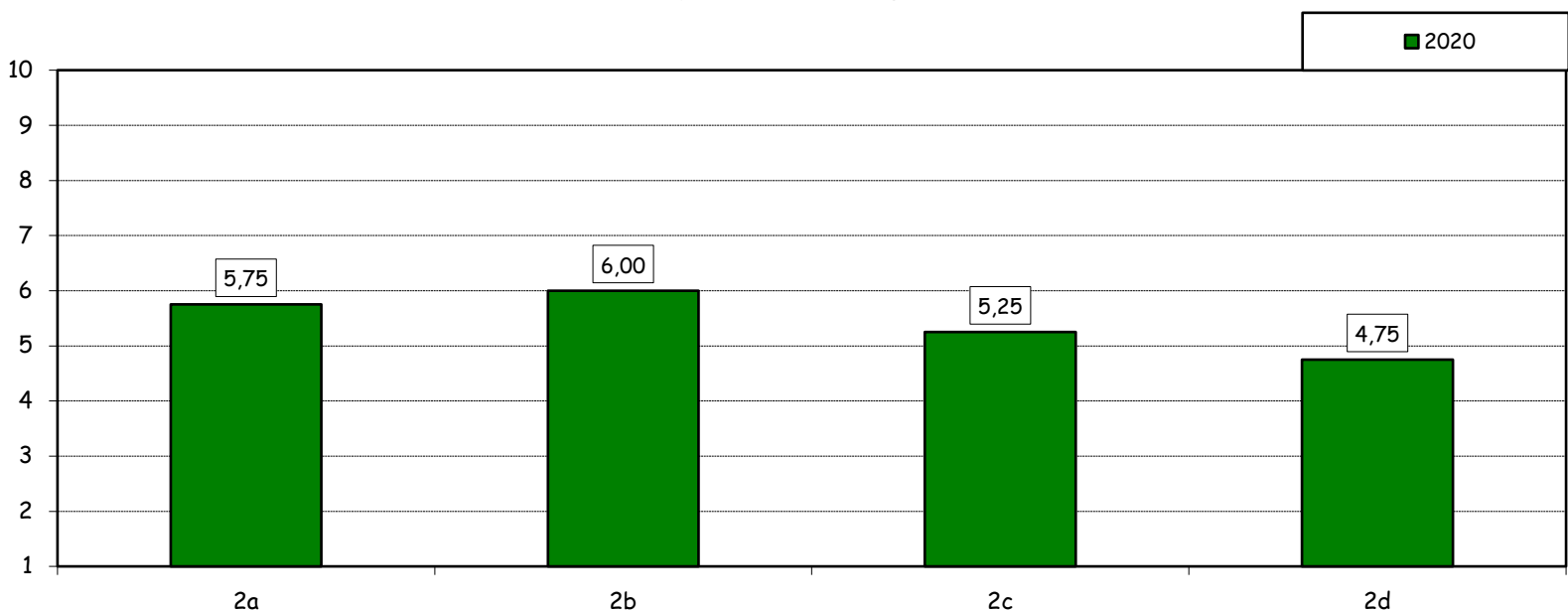


### How would you evaluate:

(only A or B answers to item no.1)

Item	Answers	Negative						Positive		Total		N.A.
		1-2		3-4-5		6-7-8		9-10		a.v.	%	a.v.
		a.v.	%	a.v.	%	a.v.	%	a.v.	%			
2a) Quality and completeness of information provided through: "International Week," emails, brochures, International Relations Service web page		1	12,5	4	50,0	2	25,0	1	12,5	8	100,0	0
2b) The range and interest of programs offered.		1	12,5	3	37,5	3	37,5	1	12,5	8	100,0	0
2c) The convenience of the study abroad desk's opening hours.		2	25,0	4	50,0	1	12,5	1	12,5	8	100,0	0
2d) The support you received from Bocconi International Relations.		3	37,5	3	37,5	1	12,5	1	12,5	8	100,0	0

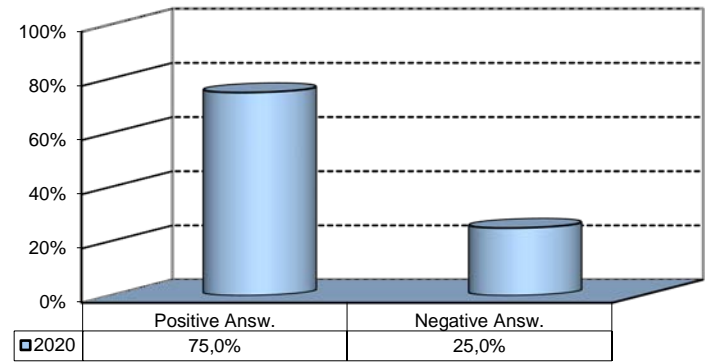
### Comparison of average values



## Experience Of Studying Abroad

3) Would you positively evaluate this experience?

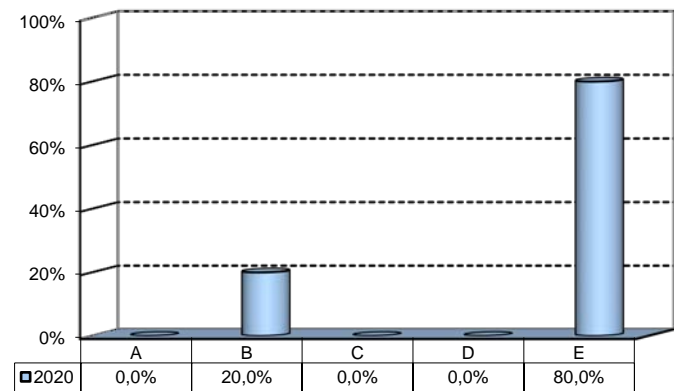
Answers	a.v.	%
A - Definitely YES	3	37,5%
B - More YES than NO	3	37,5%
C - More NO than YES	2	25,0%
D - Definitely NO	0	0,0%
<b>Total</b>	<b>8</b>	<b>100%</b>
NA	0	



(In case of answer "D" to item no.1)

4) Please indicate why you did not attend a period of study abroad (select all relevant reasons):

Answers	a.v.	%
A-Lack of interest in this kind of experience	0	0,0%
B-Absence of the requirements needed for participation in the program selected	1	20,0%
C-Rejection of your application	0	0,0%
D-Lack of time during the period of study	0	0,0%
E-Other (personal, family, organizational reasons, etc.)	4	80,0%
<b>Total</b>	<b>5</b>	<b>100%</b>
NA	4	

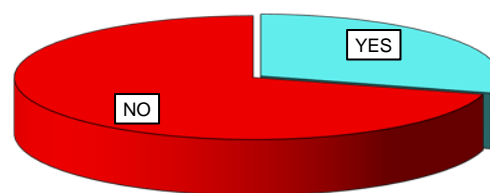




## Internship Activities

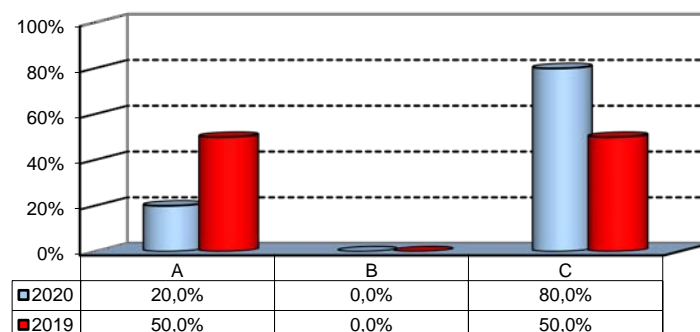
1) Did you attend an internship recognized by the Bachelor program?

	a.v.	2020	2019
YES	5	29,4%	20,0%
NO	12	70,6%	80,0%
<b>Total</b>	<b>17</b>	<b>100%</b>	<b>100%</b>
NA	0		



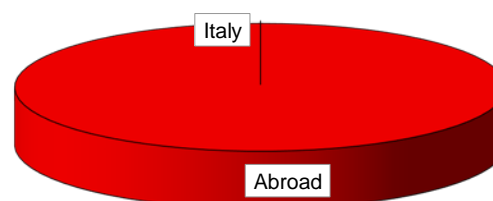
2) How did you find the internship?

	a.v.	%
A - Through the University's Placement Services*	1	20,0%
B - Through the faculty members of the degree program	0	0,0%
C - Through autonomous way then recognized by the degree program	4	80,0%
<b>Total</b>	<b>5</b>	<b>100%</b>
NA	0	



3) Where did you do the internship recognised by the Bachelor Program?

	a.v.	2020
Italy	0	0,0%
Abroad	5	100,0%
<b>Total</b>	<b>5</b>	<b>100%</b>
NA	0	

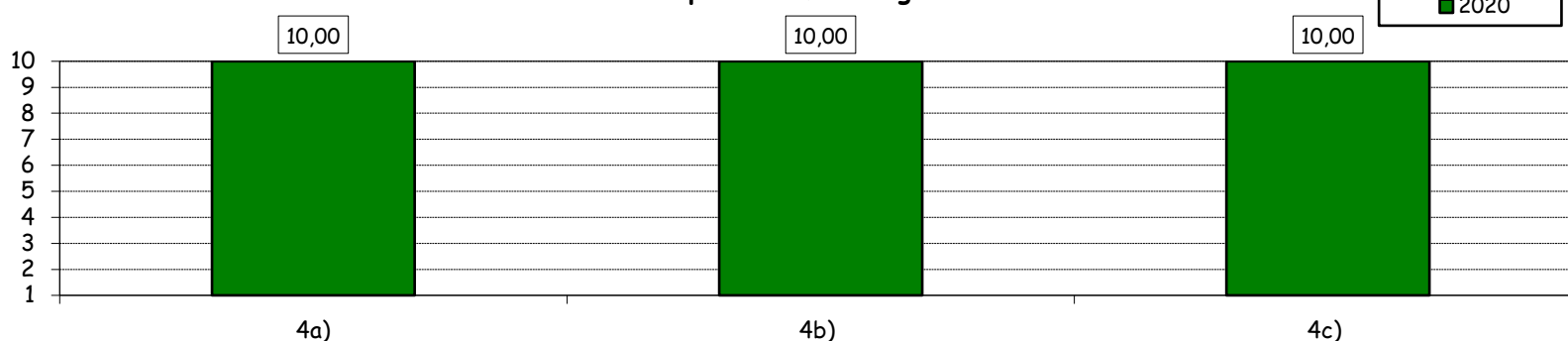


How would you evaluate:

(In case of answer "A" to item no.2)

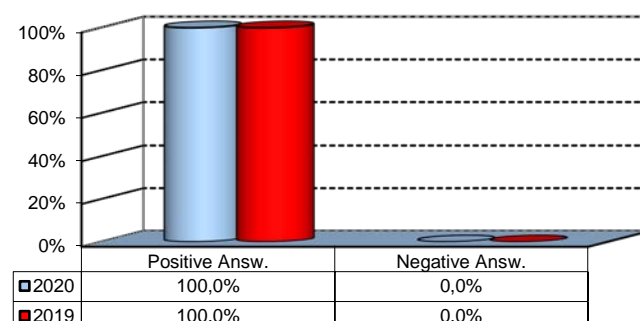
Item	Answers	Negative				Positive				Total		N.A.
		1-2		3-4-5		6-7-8		9-10		a.v.	%	a.v.
		a.v.	%	a.v.	%	a.v.	%	a.v.	%	a.v.	%	a.v.
4a) The convenience of the internship front desk's opening hours.		0	0,0	0	0,0	0	0,0	1	100,0	1	100,0	0
4b) The number and variety of opportunities offered		0	0,0	0	0,0	0	0,0	1	100,0	1	100,0	0
4c) The support you received from the Internship Office.		0	0,0	0	0,0	0	0,0	1	100,0	1	100,0	0

Comparison of average values



5) Would you positively evaluate this experience?

	a.v.	%
A - Definitely YES	3	60,0%
B - More YES than NO	2	40,0%
C - More NO than YES	0	0,0%
D - Definitely NO	0	0,0%
<b>Total</b>	<b>5</b>	<b>100%</b>
NA	0	



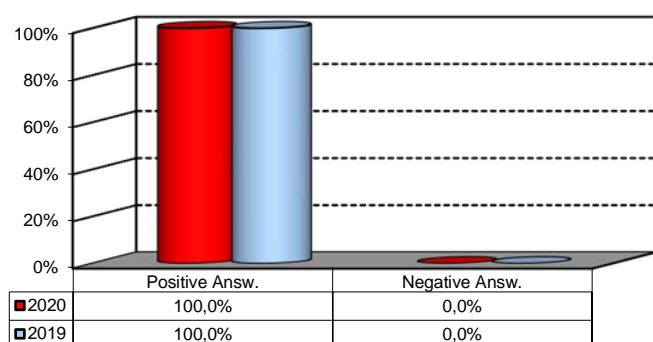
\*JobGate, Internship Programs, Companies' meetings and presentations, Bocconi&Jobs, Placement Library's services, Curricular Internship Special, websites reported in the section 'Lavoro.net'

## General satisfaction and short-term plans

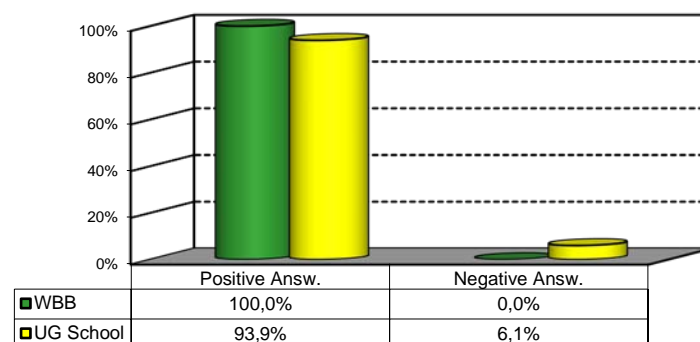
1) Are you satisfied overall with the study program you attended?

Answers	Italian School career		Int.nal School Career		Total	
	a.v.	%	a.v.	%	a.v.	%
A - Definitely YES	0	0,0%	9	52,9%	9	52,9%
B - More YES than NO	0	0,0%	8	47,1%	8	47,1%
C - More NO than YES	0	0,0%	0	0,0%	0	0,0%
D - Definitely NO	0	0,0%	0	0,0%	0	0,0%
<b>Total</b>	<b>0</b>	<b>0%</b>	<b>17</b>	<b>100%</b>	<b>17</b>	<b>100%</b>
NA	0		0		0	

Over time comparison



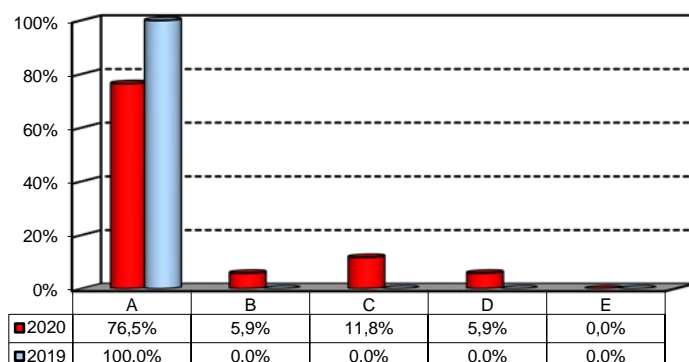
Comparison with the overall School data



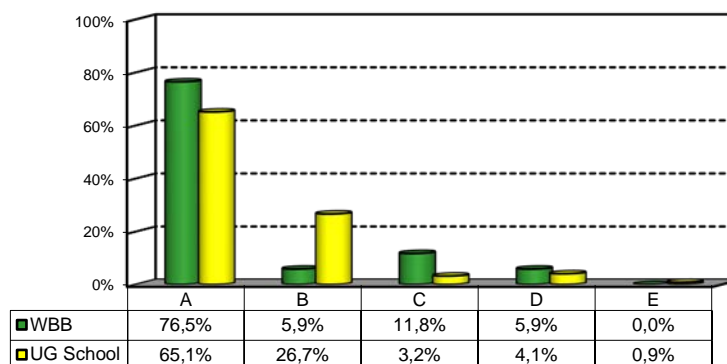
2a) If you could go back in time, would you enroll in the University again?

Answers	Italian School career		Int.nal School Career		Total	
	a.v.	%	a.v.	%	a.v.	%
A - YES, in the same Bachelor Program at this University	0	0,0%	13	76,5%	13	76,5%
B - YES, in another Program at this University	0	0,0%	1	5,9%	1	5,9%
C - YES, in the same Program but at another University	0	0,0%	2	11,8%	2	11,8%
D - YES, in another Program at another University	0	0,0%	1	5,9%	1	5,9%
E - NO, I would not enrol in university anymore	0	0,0%	0	0,0%	0	0,0%
<b>Total</b>	<b>0</b>	<b>0%</b>	<b>17</b>	<b>100%</b>	<b>17</b>	<b>100%</b>
NA	0		0		0	

Over time comparison



Comparison with the overall School data



## General satisfaction and short-term plans

(In case of answer "C", "D" or "E" to item no.2a)

2c) Why would you make a different choice?

Answers	Italian School career		Int.nal School Career		Total 2020	
	v.a.	%	v.a.	%	v.a.	%
A - My interest has changed during this time / I discovered that I have different attitudes	0	0,0%	1	33,3%	1	33,3%
B - The Bachelor program did not mirror my expectations	0	0,0%	0	0,0%	0	0,0%
C- I have not been admitted to the Bachelor Program selected as first-choice.	0	0,0%	0	0,0%	0	0,0%
D- The campus and its facilities and services were not up to my expectations	0	0,0%	2	66,7%	2	66,7%
E- I would have preferred to attend the same Bachelor Program but taught in English.	0	0,0%	0	0,0%	0	0,0%
F - Other reasons	0	0,0%	0	0,0%	0	0,0%
<b>Total</b>	<b>0</b>	<b>0%</b>	<b>3</b>	<b>100%</b>	<b>3</b>	<b>100%</b>
NA	0		0		0	

## General satisfaction and short-term plans

### 3) In the near future do you intend to:

	Italian School career		Int.nal School Career		Total		2019 %
	a.v.	%	a.v.	%	2020 a.v.	2020 %	
A- To go on with university studies at Bocconi (Master of Science, one-year Master of Science)	0	0,0%	1	6,3%	1	6,3%	0,0%
B- To go on with university studies at another Italian University	0	0,0%	0	0,0%	0	0,0%	0,0%
C- To go on with university studies abroad	0	0,0%	3	18,8%	3	18,8%	20,0%
D - To immediately look for a job	0	0,0%	3	18,8%	3	18,8%	30,0%
E - To accept a job proposal received	0	0,0%	7	43,8%	7	43,8%	40,0%
F - To continue to do the job started during this degree program	0	0,0%	2	12,5%	2	12,5%	10,0%
<b>Total</b>	<b>0</b>	<b>0%</b>	<b>16</b>	<b>100%</b>	<b>16</b>	<b>100%</b>	<b>100%</b>
NA	0		1		1		

### 4) If you intend to continue your university studies at another University (in Italy or abroad), what are the reasons for your choice? (multiple answers admitted)

	Italian School career		Int.nal School Career		Total		2019 %
	a.v.	%	a.v.	%	2020 a.v.	2020 %	
A - I would like to attend a more prestigious university	0	0,0%	1	12,5%	1	12,5%	0,0%
B - I would like to build a strong international curriculum	0	0,0%	3	37,5%	3	37,5%	0,0%
C- I can not bear the cost of studies (tuition fees and cost of living)	0	0,0%	0	0,0%	0	0,0%	0,0%
D - I can not bear the cost of studies (tuition fees and cost of living)	0	0,0%	0	0,0%	0	0,0%	0,0%
E- The administrative services are not sufficiently efficient	0	0,0%	1	12,5%	1	12,5%	0,0%
F - I think that the contents of Bocconi's MSc programs do not differ much from those of undergraduate programs	0	0,0%	1	12,5%	1	12,5%	0,0%
G - Other reasons	0	0,0%	2	25,0%	2	25,0%	0,0%
<b>Total</b>	<b>0</b>	<b>0%</b>	<b>8</b>	<b>100%</b>	<b>8</b>	<b>100%</b>	<b>0%</b>
NA	0		0		0		

#### G - Other reasons:

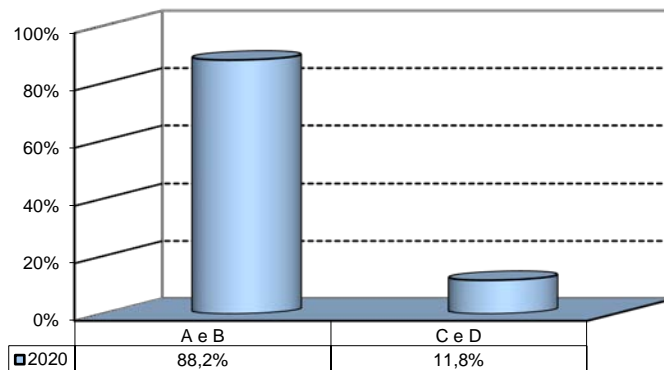
I am doing a Masters of Ocean Leadership in Perth

I have a job

## Infrastructure: Classrooms, Library And Facilities

1) What is your opinion about the classrooms where lessons and other teaching activities have been held?\*

Answers	a.v.	%
A - Always or nearly always adequate	4	23,5%
B - Often adequate	11	64,7%
C - Rarely adequate	1	5,9%
D - Never adequate	1	5,9%
E - I did not use them	0	0,0%
<b>Total</b>	<b>17</b>	<b>100%</b>
NA	0	

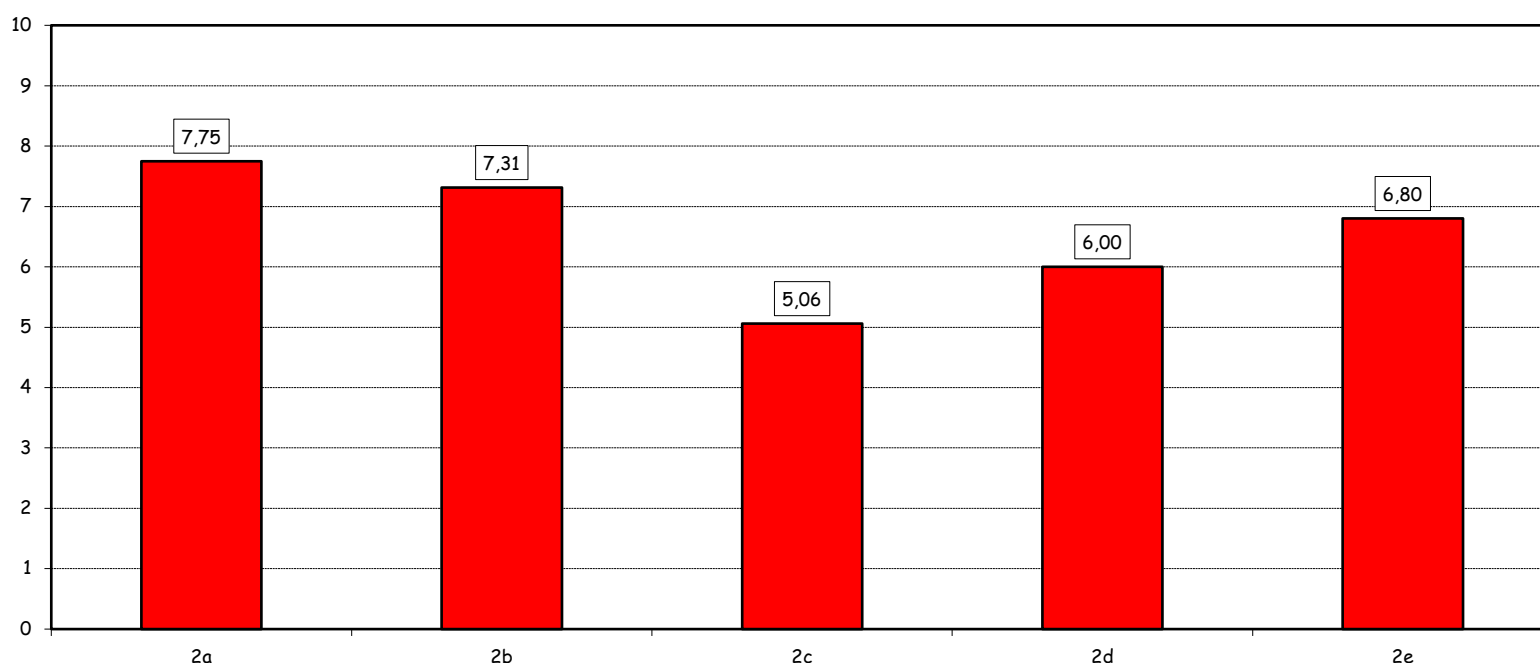


2) How would you evaluate:

Item	Answers	Negative				Positive				Total		NA	N.R.
		1-2		3-4-5		6-7-8		9-10		a.v.	%		
		a.v.	%	a.v.	%	a.v.	%	a.v.	%				
a) The adequacy of the audio and multimedia systems (e.g. instructor's computer, projectors, video players) installed in the classrooms		0	0,0	2	12,5	9	56,3	5	31,3	16	100,0		1
b) The cleanliness of classrooms and of other common areas on campus (corridors, halls, study rooms)		1	6,3	1	6,3	8	50,0	6	37,5	16	100,0		1
c) The adequacy of the amount of areas/seats reserved to individual study in the University Library		4	23,5	7	41,2	3	17,6	3	17,6	17	100,0	0	0
d) The adequacy of the amount of areas/seats reserved to individual study in other buildings on campus		1	6,7	7	46,7	3	20,0	4	26,7	15	100,0	0	2
e) The clarity and adequacy of the signage system on campus		0	0,0	4	26,7	7	46,7	4	26,7	15	100,0		2

Comparison of average values

■ 2020

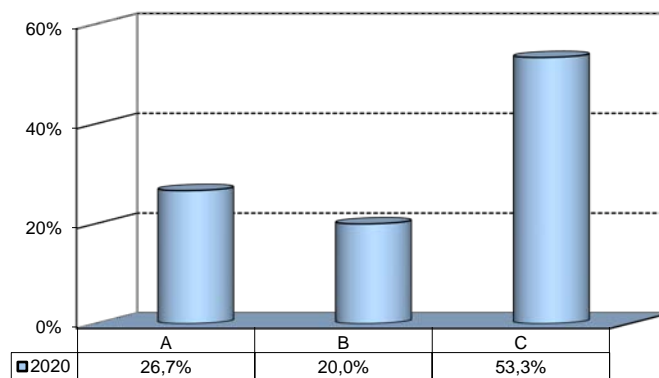


(\*): the percentage shown on the graphs is calculated by excluding the responses of those who declare that they have not used the service.

## Infrastructure: Classrooms, Library And Facilities

3) What is your overall opinion on the PC Labs and IT facilities provided by the University?

Answers	a.v.	%
A- Adequate in number	4	26,7%
B- Inadequate in number	3	20,0%
C- Never used	8	53,3%
<b>Total</b>	<b>15</b>	<b>100%</b>
NA	2	

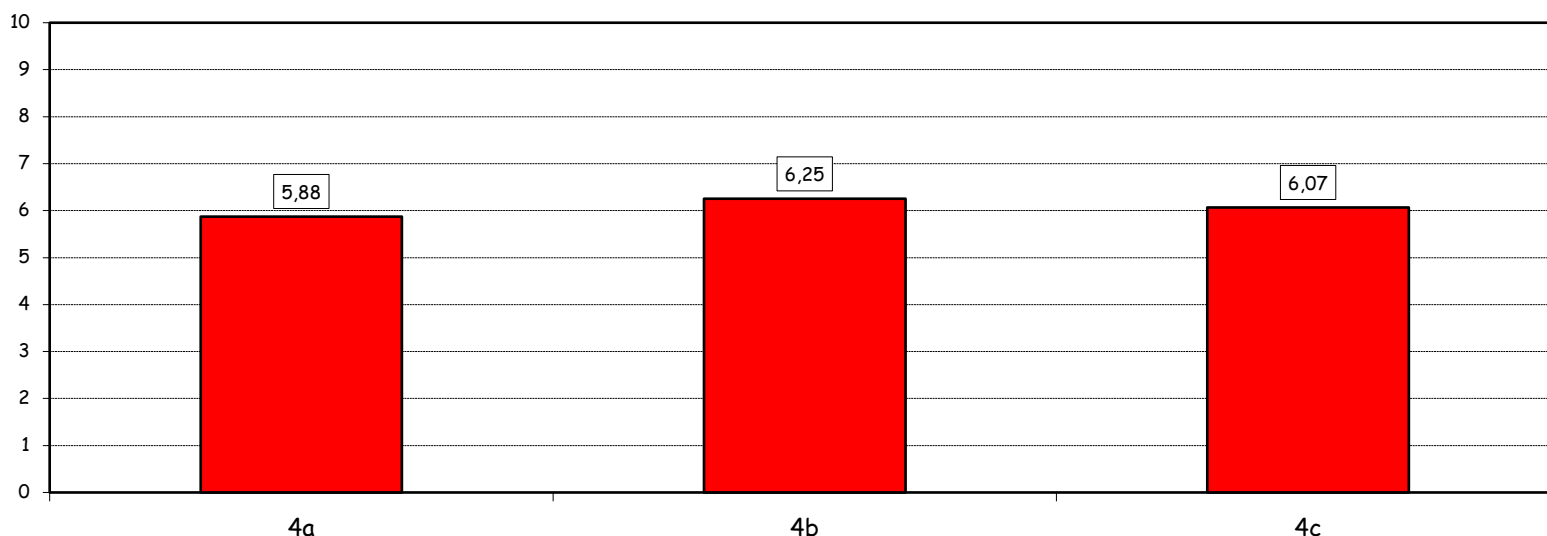


4) How would you evaluate:

Answers	Negative				Positive				Total		NA
	1-2		3-4-5		6-7-8		9-10				
	a.v.	%	a.v.	%	a.v.	%	a.v.	%	a.v.	%	
a) The availability of technical staff supporting students (Tutors) in PC Labs^	0	0,0	4	50,0	3	37,5	1	12,5	8	100,0	-1
b) The convenience of the PC Labs' opening hours^	0	0,0	4	50,0	3	37,5	1	12,5	8	100,0	-1
c) The level of accessibility and usability of the University's IT services (Internet access points, Punto Blu, Virtual Punto Blu, wireless connection)	1	6,7	5	33,3	7	46,7	2	13,3	15	100,0	2

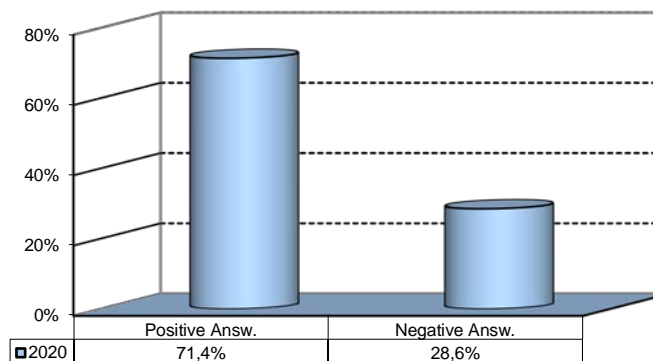
Comparison of average values

■ 2020



5) What is your overall opinion on the Library's services, such as support for individual study?\*

Answers	a.v.	%
A - Very Positive	2	12,5%
B - Quite positive	8	50,0%
C - Quite negative	1	6,3%
D - Very Negative	3	18,8%
E - Never used	2	12,5%
<b>Total</b>	<b>16</b>	<b>100%</b>
NA	1	



(^): Only in case of answer "A" or "B" to item no.3

(\*): the percentage shown on the graphs is calculated by excluding the responses of those who declare that they have not used the service.