

EVALUATION OF THE DEGREE PROGRAM AND THE UNIVERSITY EXPERIENCE

BACHELOR IN ECONOMIC AND SOCIAL SCIENCES Graduation year 2020

N° QUESTIONNAIRES PROCESSED: 92

N° OF GRADUATE STUDENTS: 100

RESPONSE RATE: 92,0%



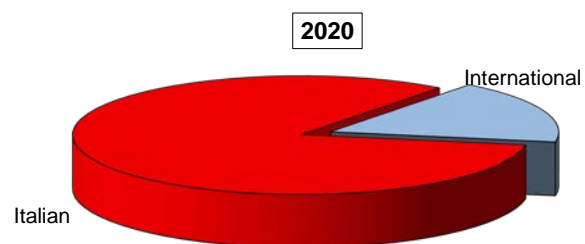
EVALUATION OF STUDENT EXPERIENCE

Economic and Social Sciences

General information

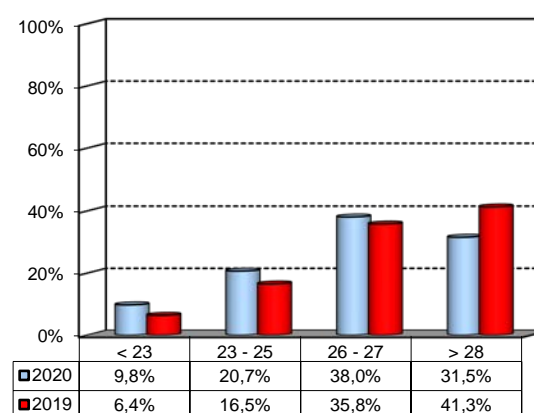
School Career

Answers	a.v.	%	
		2020	2019
Italian	76	82,6%	98,2%
International	16	17,4%	1,8%
Total	92	100%	100%
NA	0		



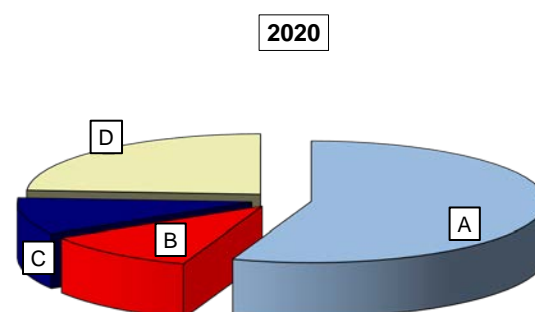
Average mark of the exams passed: (approximate average expressed in 30/30)

Answers	a.v.	%
< 23	9	9,8%
23 - 25	19	20,7%
26 - 27	35	38,0%
> 28	29	31,5%
Total	92	100%
NA	0	



How many of the courses included in your curriculum did you attend regularly?

Answers	a.v.	%	
		2020	2019
A - More than 75%	51	55,4%	87,2%
B - Between 50 and 75%	10	10,9%	9,2%
C - Between 25 and 50%	9	9,8%	2,8%
D - Less than 25%	22	23,9%	0,9%
Total	92	100%	100%
NA	0		

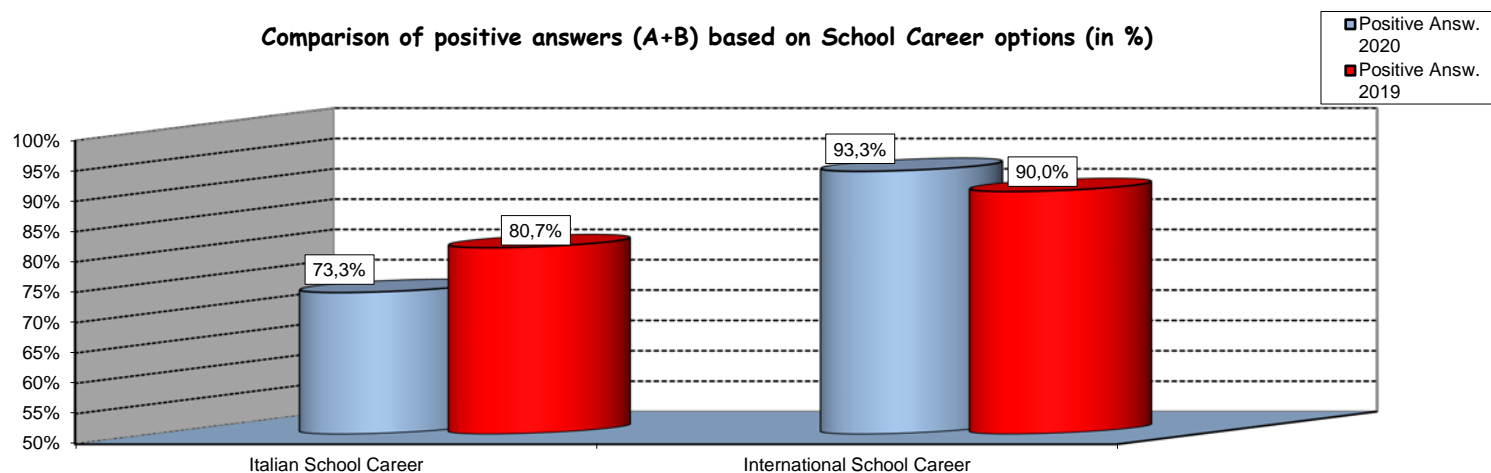


Study experience

1) Was the knowledge acquired during secondary school adequate to undertake your Bachelor program?

Answers	Italian School Career		International School Career		Total	
	a.v.	%	a.v.	%	a.v.	%
A - Definitely YES	31	41,3%	7	46,7%	38	42,2%
B - More YES than NO	24	32,0%	7	46,7%	31	34,4%
C - More NO than YES	16	21,3%	1	6,7%	17	18,9%
D - Definitely NO	4	5,3%	0	0,0%	4	4,4%
Total	75	100%	15	100%	90	100%
NA	1		1		2	

Comparison of positive answers (A+B) based on School Career options (in %)



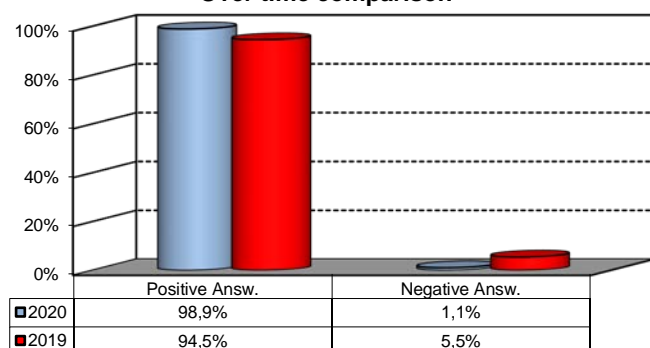
2) if you answered " More NO than YES" or "Definitely NO", indicate the subject or the subjects for which your previous knowledge revealed to be insufficient:

	a.v.	%
MATHEMATICS MODULE 1 (THEORY AND METHODS)	8	14,8%
MATHEMATICS MODULE 2 (APPLIED MATHEMATICS)	8	14,8%
STATISTICA	4	7,4%
FOUNDATIONS OF ECONOMICS MODULE 1 (MICROECONO	4	7,4%
STATISTICS MODULE 1 (THEORY AND METHODS)	4	7,4%
Altro	26	48,1%
Total	54	100%

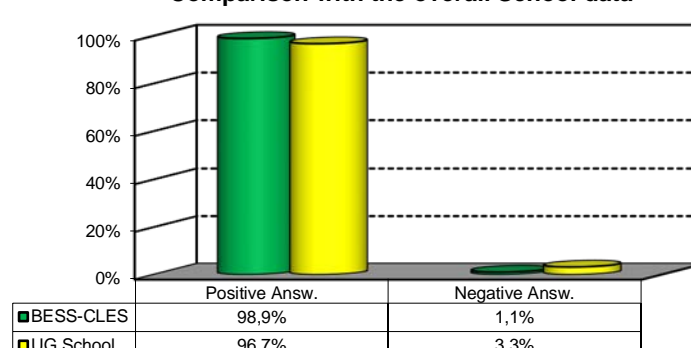
3) On the whole, do you appreciate the qualifications you acquired at the end of the Bachelor program at Bocconi?

Aswers	Italian school Career		Int.nal School Career		Total	
	v.a.	%	v.a.	%	v.a.	%
A - Definitely YES	44	58,7%	8	53,3%	52	57,8%
B - More YES than NO	30	40,0%	7	46,7%	37	41,1%
C - More NO than YES	1	1,3%	0	0,0%	1	1,1%
D - Definitely NO	0	0,0%	0	0,0%	0	0,0%
Total	75	100%	15	100%	90	100%
NA	1		1		2	

Over time comparison



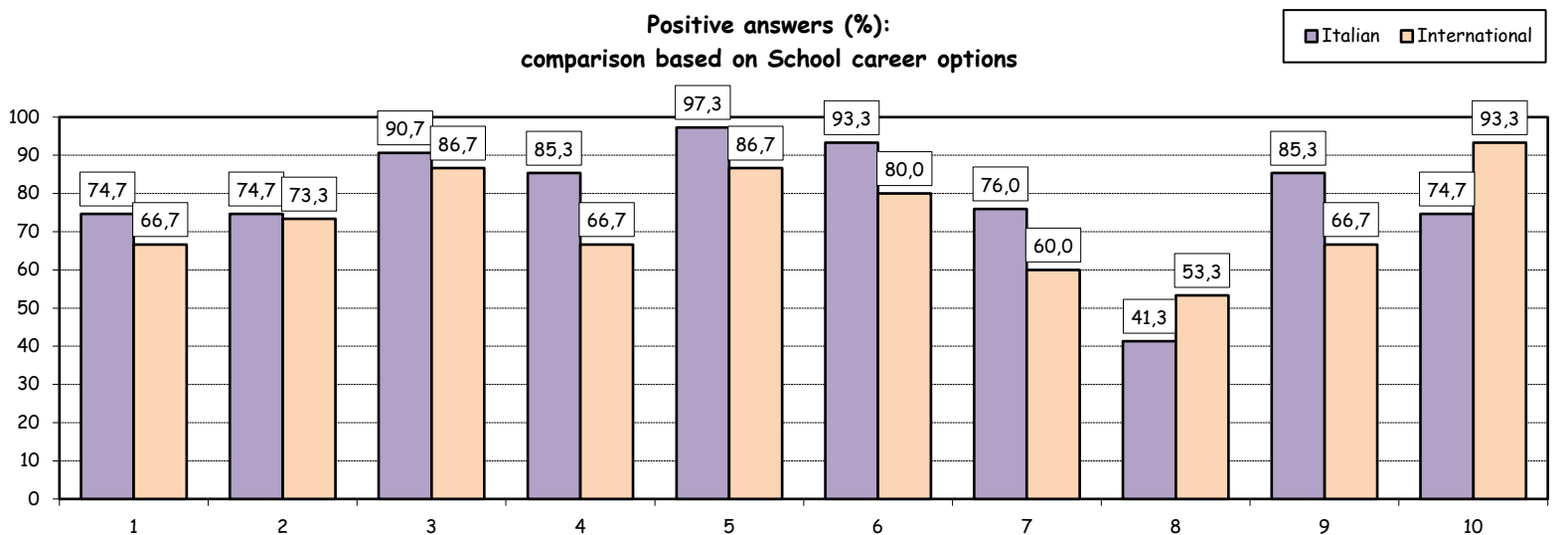
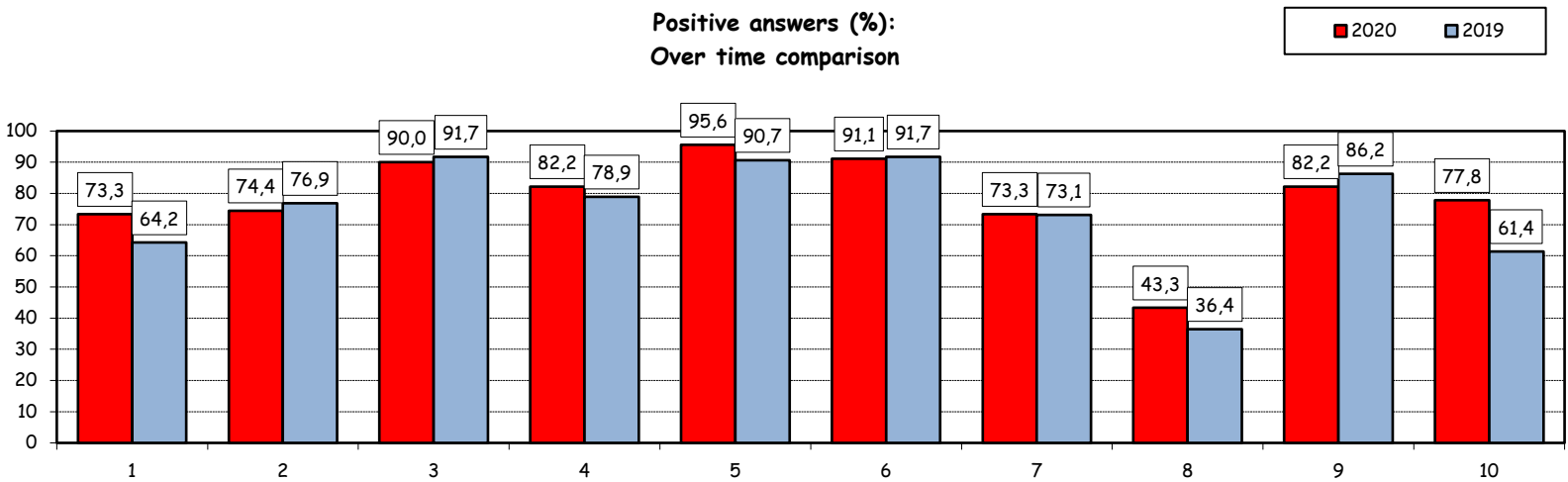
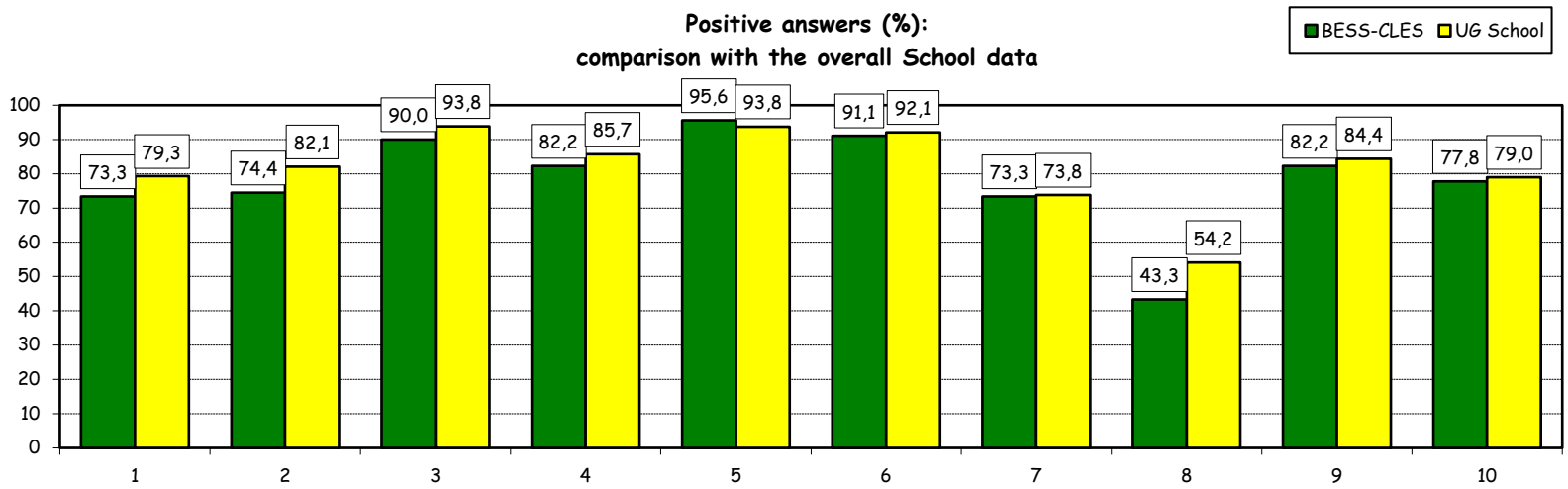
Comparison with the overall School data



Study experience

4) Do you think that your course of study at Bocconi has contributed to the development of the following skills?

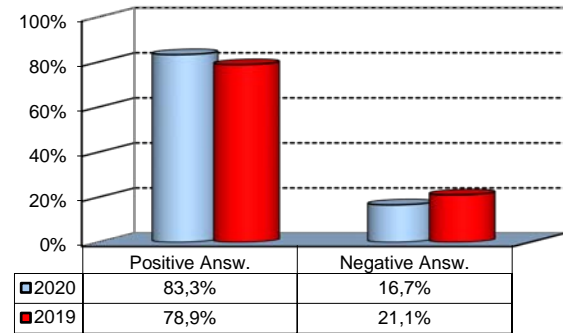
Soft Skill	Item	Definitely YES		More YES than NO		More NO than YES		Definitely NO		Total		n.a.
		a.v.	%	a.v.	%	a.v.	%	a.v.	%	a.v.	%	a.v.
1	Ability to work on a team	14	15,6	52	57,8	23	25,6	1	1,1	90	100,0	2
2	Interpersonal skills	22	24,4	45	50,0	20	22,2	3	3,3	90	100,0	2
3	Organizational skills	43	47,8	38	42,2	9	10,0	0	0,0	90	100,0	2
4	Critical thinking skills	47	52,2	27	30,0	15	16,7	1	1,1	90	100,0	2
5	Ability to analyze and select information	64	71,1	22	24,4	3	3,3	1	1,1	90	100,0	2
6	Problem-solving ability	50	55,6	32	35,6	7	7,8	1	1,1	90	100,0	2
7	Written communication skills	25	27,8	41	45,6	22	24,4	2	2,2	90	100,0	2
8	Verbal communication skills	7	7,8	32	35,6	40	44,4	11	12,2	90	100,0	2
9	Ability to cope with stress	42	46,7	32	35,6	12	13,3	4	4,4	90	100,0	2
10	Computer Skills	28	31,1	42	46,7	18	20,0	2	2,2	90	100,0	2



Study experience

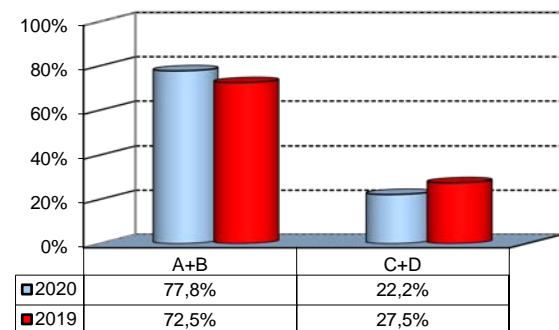
5) Do you think that the courses in your curriculum were adequately coordinated with each other?

	a.v.	%
A - Definitely YES	10	11,1%
B - More YES than NO	65	72,2%
C - More NO than YES	14	15,6%
D - Definitely NO	1	1,1%
Total	90	100%
NA	2	



6a) Do you think that the overall study load was compatible with the length of the program?

	a.v.	%
A - Definitely YES	28	31,1%
B - More YES than NO	42	46,7%
C - More NO than YES	15	16,7%
D - Definitely NO	5	5,6%
Total	90	100%
NA	2	



6b) Specifically, do you believe that the study load was excessive or insufficient?

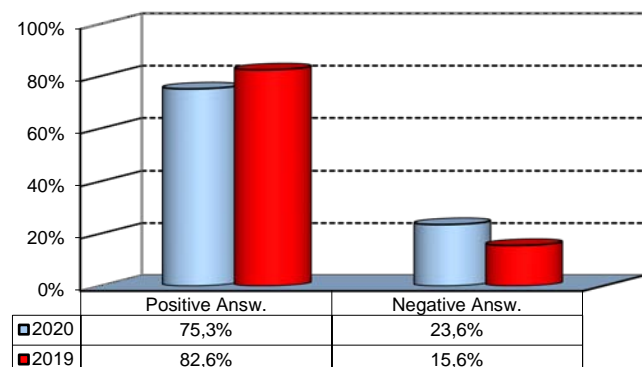
(In case of answer "C" to item no.6a)

	a.v.	% 2020	% 2019
Excessive	18	100,0%	100,0%
Insufficient	0	0,0%	0,0%
Total	18	100%	0%
NA	2		

Final Report

1) Do you think that the supervision and assistance for preparing for your final report (internship report, final paper or other) were adequate?

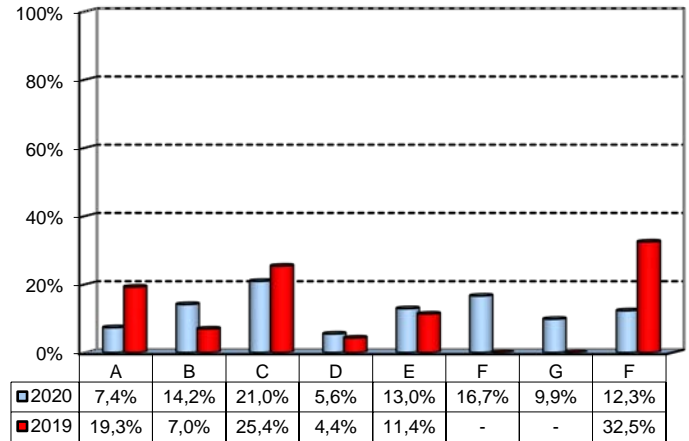
	a.v.	%
A - Definitely YES	36	40,4%
B - More YES than NO	31	34,8%
C - More NO than YES	17	19,1%
D - Definitely NO	4	4,5%
E - Supervision was not expected	1	1,1%
Total	89	100%
NA	3	



Extracurricular Activities

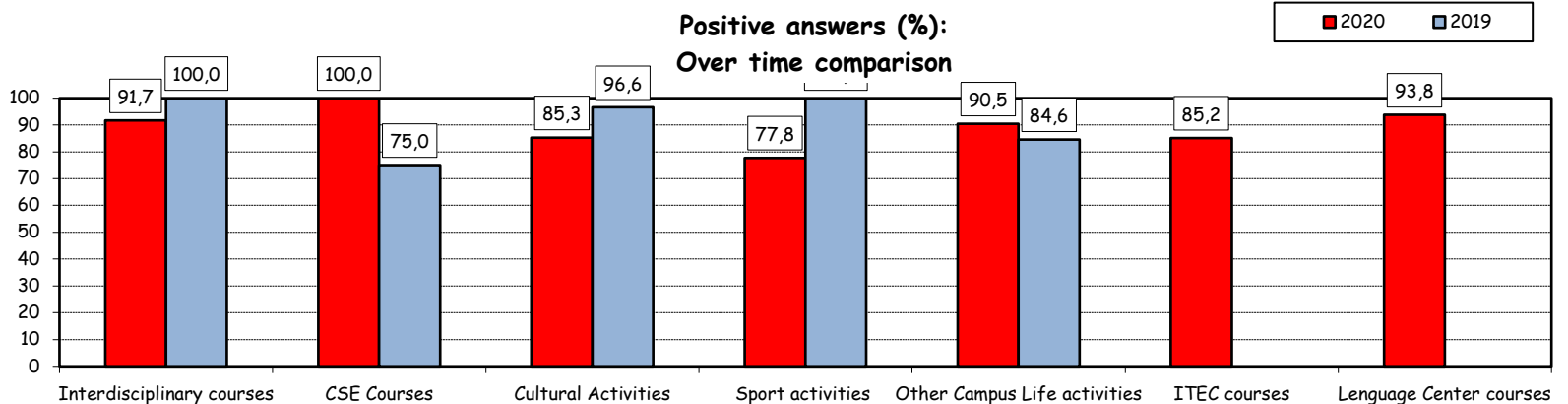
1) Which of the following extracurricular activities did you attend during the Bachelor Program?
(multiple answers admitted)

	a.v.	%
A - Interdisciplinary courses ("Sapere a tutto campo")	12	7,4%
B - Counseling and Self-Empowerment courses (CSE)	23	14,2%
C - Cultural Activities (visit museums, concerts, theatre and cinema, various issues)	34	21,0%
D - Sport activities	9	5,6%
E - Other Campus Life activities	21	13,0%
F - IT Education Center courses (ITEC)	27	16,7%
G - Language Center courses	16	9,9%
H - None	20	12,3%
Total	162	100%
NA	0	



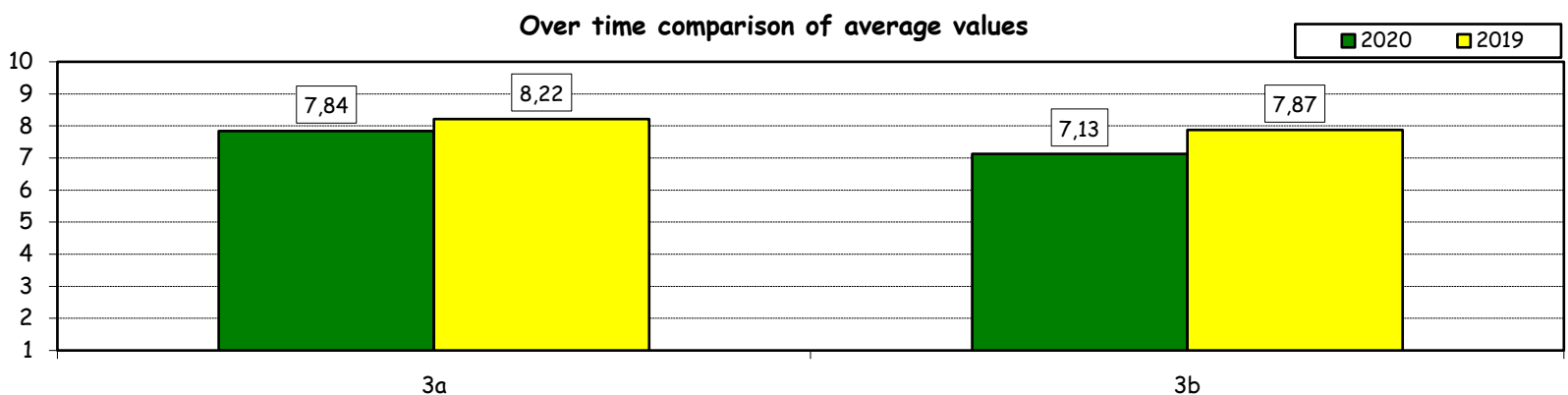
2) Do you think that the activities you took part in contributed to your cultural/educational enrichment?

	Definitely YES		More YES than NO		More NO than YES		Definitely NO		Total		NA
	a.v.	%	a.v.	%	a.v.	%	a.v.	%	a.v.	%	a.v.
A - Interdisciplinary courses	4	33,3	7	58,3	1	8,3	0	0,0	12	100,0	0
B - CSE courses	12	54,5	10	45,5	0	0,0	0	0,0	22	100,0	1
C - Cultural Activities	14	41,2	15	44,1	5	14,7	0	0,0	34	100,0	0
D - Sport activities	0	0,0	7	77,8	2	22,2	0	0,0	9	100,0	0
E - Other Campus Life activities	9	42,9	10	47,6	2	9,5	0	0,0	21	100,0	0
F - ITEC courses	11	40,7	12	44,4	4	14,8	0	0,0	27	100,0	0
G - Language Center courses	9	56,3	6	37,5	1	6,3	0	0,0	16	100,0	0



How would you evaluate:

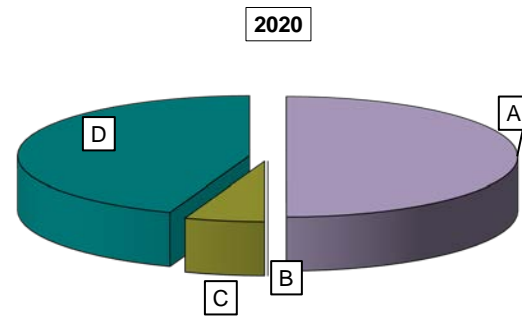
Item	Answers	Negative				Positive				Total	NA	
		1-2		3-4-5		6-7-8		9-10				
		a.v.	%	a.v.	%	a.v.	%	a.v.	%			
3a) The range and interest of programmes offered		0	0,0	3	4,3	47	67,1	20	28,6	70	100,0	2
3b) The support you received from the Campus Life Office		1	1,4	13	18,6	42	60,0	14	20,0	70	100,0	2



Experience Of Studying Abroad

1) Type of experience:

Answers	a.v.	%	
		2020	2019
A - Exchange	45	50,0%	56,9%
B - Double Degree	0	0,0%	0,0%
C - Free-Mover	5	5,6%	0,0%
D - None	40	44,4%	43,1%
Total	90	100%	100%
NA	2		

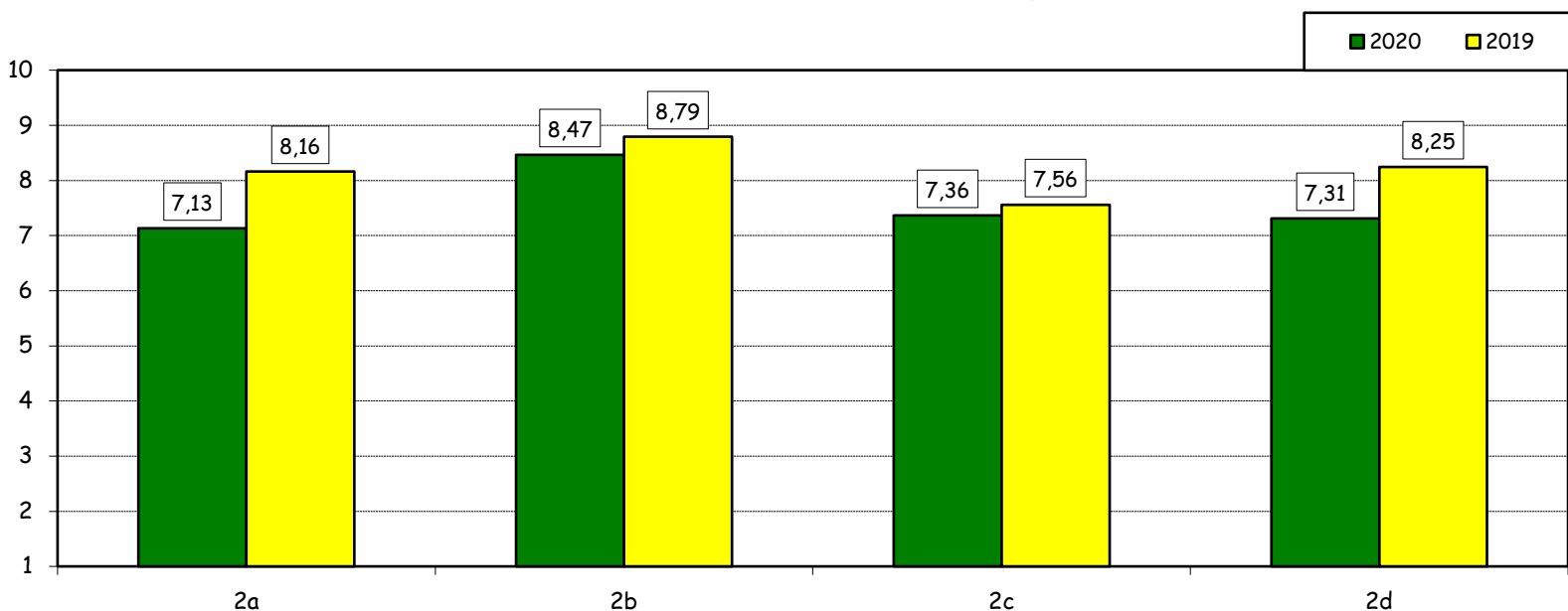


How would you evaluate:

(only A or B answers to item no.1)

Item	Answers	Negative				Positive				Total		N.A.
		1-2		3-4-5		6-7-8		9-10		a.v.	%	a.v.
		a.v.	%	a.v.	%	a.v.	%	a.v.	%			
2a) Quality and completeness of information provided through: "International Week," emails, brochures, International Relations Service web page		0	0,0	6	13,3	28	62,2	11	24,4	45	100,0	0
2b) The range and interest of programs offered.		0	0,0	0	0,0	21	46,7	24	53,3	45	100,0	0
2c) The convenience of the study abroad desk's opening hours.		0	0,0	7	15,9	25	56,8	12	27,3	44	100,0	1
2d) The support you received from Bocconi International Relations.		0	0,0	8	17,8	24	53,3	13	28,9	45	100,0	0

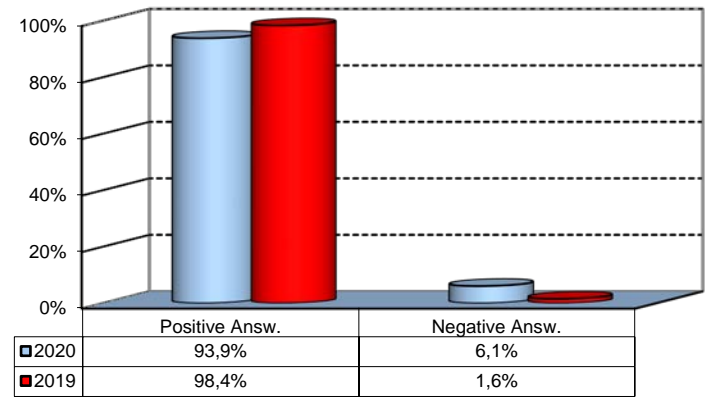
Over time comparison of average values



Experience Of Studying Abroad

3) Would you positively evaluate this experience?

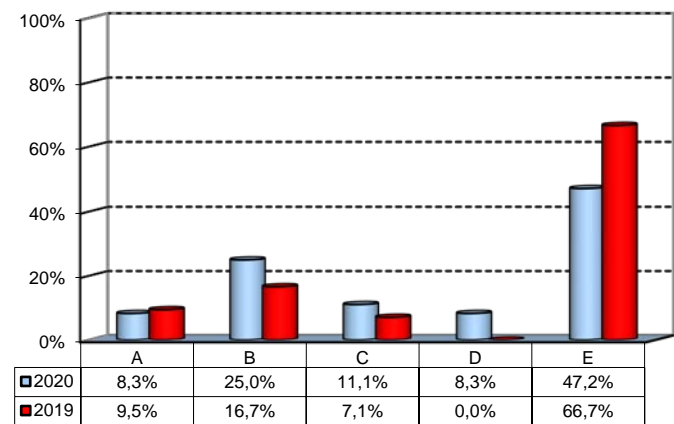
Answers	a.v.	%
A - Definitely YES	38	77,6%
B - More YES than NO	8	16,3%
C - More NO than YES	3	6,1%
D - Definitely NO	0	0,0%
Total	49	100%
NA	1	



(In case of answer "D" to item no.1)

4) Please indicate why you did not attend a period of study abroad (select all relevant reasons):

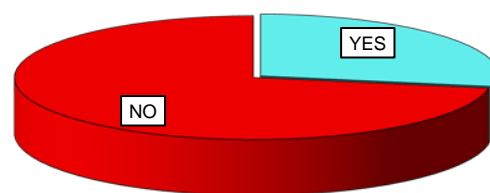
Answers	a.v.	%
A-Lack of interest in this kind of experience	3	8,3%
B-Absence of the requirements needed for participation in the program selected	9	25,0%
C-Rejection of your application	4	11,1%
D-Lack of time during the period of study	3	8,3%
E-Other (personal, family, organizational reasons, etc.)	17	47,2%
Total	36	100%
NA	4	



Internship Activities

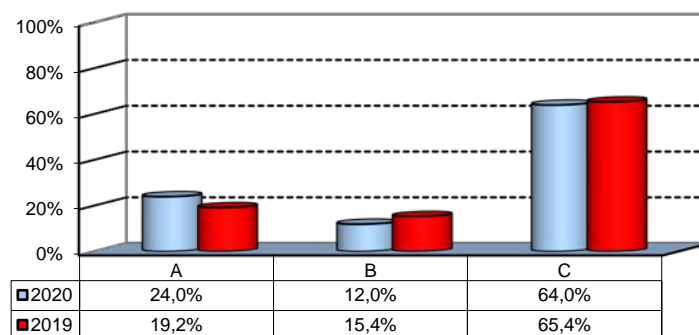
1) Did you attend an internship recognized by the Bachelor program?

	a.v.	2020	2019
YES	25	27,8%	23,9%
NO	65	72,2%	76,1%
Total	90	100%	100%
NA	2		



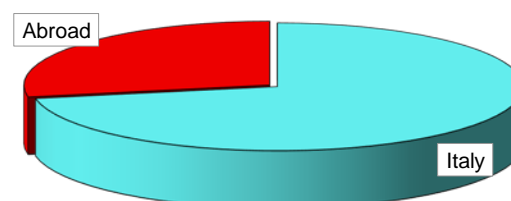
2) How did you find the internship?

	a.v.	%
A - Through the University's Placement Services*	6	24,0%
B - Through the faculty members of the degree program	3	12,0%
C - Through autonomous way then recognized by the degree program	16	64,0%
Total	25	100%
NA	0	



3) Where did you do the internship recognised by the Bachelor Program?

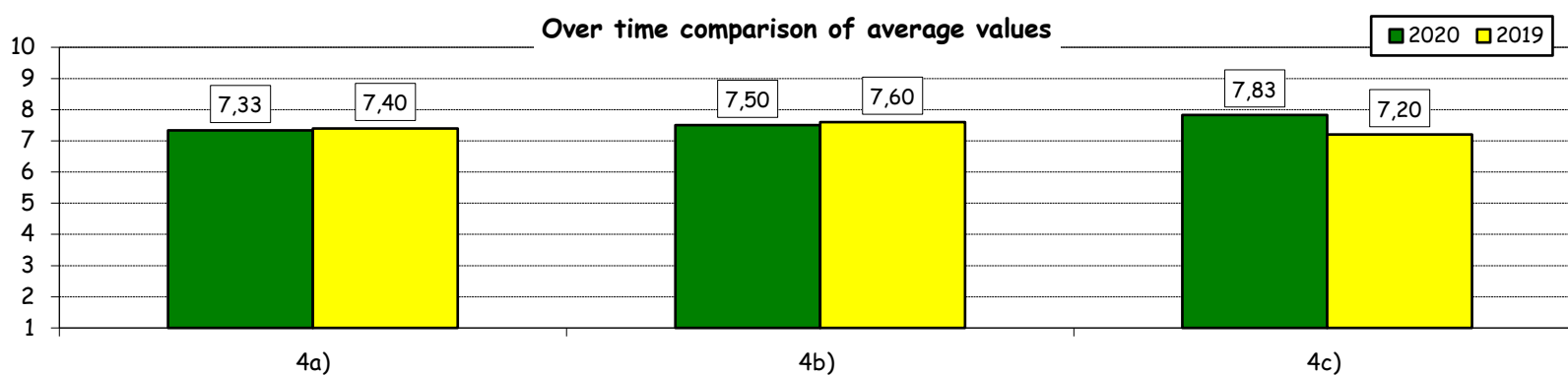
	a.v.	2020	2019
Italy	18	72,0%	84,6%
Abroad	7	28,0%	15,4%
Total	25	100%	100%
NA	0		



How would you evaluate:

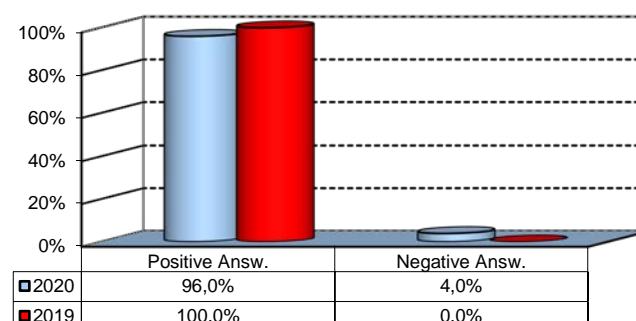
(In case of answer "A" to item no.2)

Item	Answers	Negative				Positive				Total		N.A.
		1-2		3-4-5		6-7-8		9-10		a.v.	%	a.v.
		a.v.	%	a.v.	%	a.v.	%	a.v.	%	a.v.	%	a.v.
4a) The convenience of the internship front desk's opening hours.		0	0,0	2	33,3	1	16,7	3	50,0	6	100,0	0
4b) The number and variety of opportunities offered		0	0,0	1	16,7	3	50,0	2	33,3	6	100,0	0
4c) The support you received from the Internship Office.		0	0,0	1	16,7	2	33,3	3	50,0	6	100,0	0



5) Would you positively evaluate this experience?

	a.v.	%
A - Definitely YES	17	68,0%
B - More YES than NO	7	28,0%
C - More NO than YES	1	4,0%
D - Definitely NO	0	0,0%
Total	25	100%
NA	0	



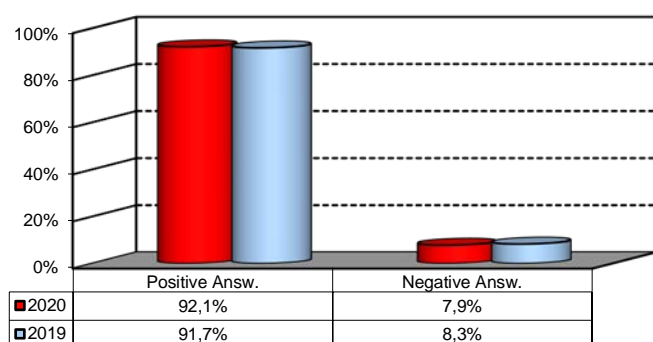
*JobGate, Internship Programs, Companies' meetings and presentations, Bocconi&Jobs, Placement Library's services, Curricular Internship Special, websites reported in the section 'Lavoro.net'

General satisfaction and short-term plans

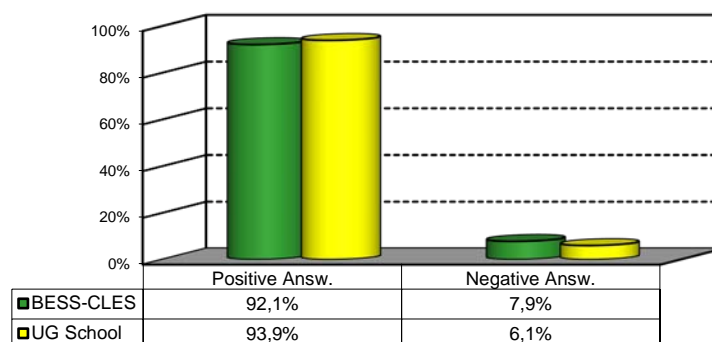
1) Are you satisfied overall with the study program you attended?

Answers	Italian School career		Int.nal School Career		Total	
	a.v.	%	a.v.	%	a.v.	%
A - Definitely YES	30	40,5%	5	33,3%	35	39,3%
B - More YES than NO	37	50,0%	10	66,7%	47	52,8%
C - More NO than YES	7	9,5%	0	0,0%	7	7,9%
D - Definitely NO	0	0,0%	0	0,0%	0	0,0%
Total	74	100%	15	100%	89	100%
NA	2		1		3	

Over time comparison



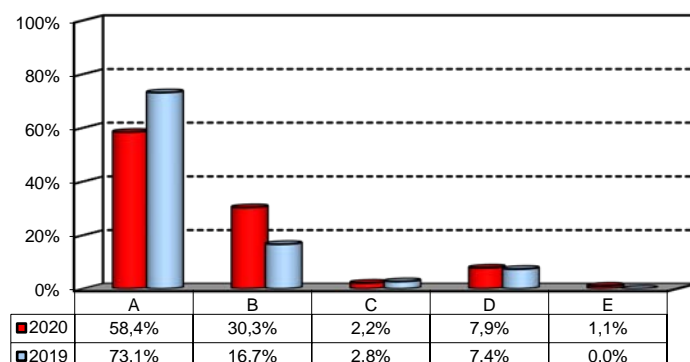
Comparison with the overall School data



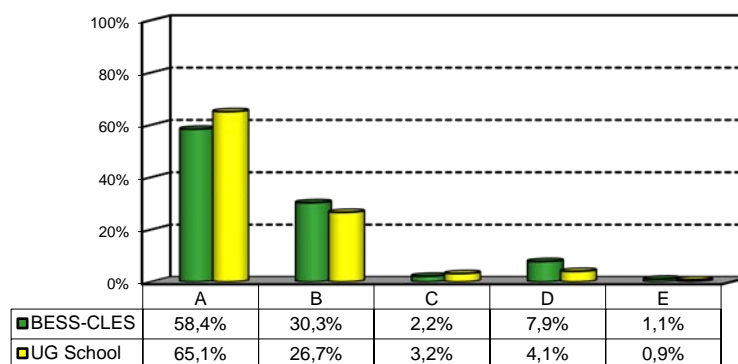
2a) If you could go back in time, would you enroll in the University again?

Answers	Italian School career		Int.nal School Career		Total	
	a.v.	%	a.v.	%	a.v.	%
A - YES, in the same Bachelor Program at this University	46	62,2%	6	40,0%	52	58,4%
B - YES, in another Program at this University	20	27,0%	7	46,7%	27	30,3%
C - YES, in the same Program but at another University	1	1,4%	1	6,7%	2	2,2%
D - YES, in another Program at another University	6	8,1%	1	6,7%	7	7,9%
E - NO, I would not enrol in university anymore	1	1,4%	0	0,0%	1	1,1%
Total	74	100%	15	100%	89	100%
NA	2		1		3	

Over time comparison



Comparison with the overall School data



General satisfaction and short-term plans

(In case of answer "B" to item no.2a)

2b) Which program would you enroll in at this University?

Answers	Italian School career		Int.nal School Career		Total	
	v.a.	%	v.a.	%	v.a.	%
BEMACS	4	20,0%	4	66,7%	8	30,8%
BIEF	3	15,0%	0	0,0%	3	11,5%
BIEM	6	30,0%	1	16,7%	7	26,9%
BIG	0	0,0%	0	0,0%	0	0,0%
CLEACC	1	5,0%	0	0,0%	1	3,8%
CLEAM	2	10,0%	0	0,0%	2	7,7%
CLEF	2	10,0%	1	16,7%	3	11,5%
CLES-BESS	0	0,0%	0	0,0%	0	0,0%
CLMG	2	10,0%	0	0,0%	2	7,7%
WBB	0	0,0%	0	0,0%	0	0,0%
Total	20	100%	6	100%	26	100%

(In case of answer "C", "D" or "E" to item no.2a)

2c) Why would you make a different choice?

Answers	Italian School career		Int.nal School Career		Total		
	v.a.	%	v.a.	%	2020		2019
					v.a.	%	%
A - My interest has changed during this time / I discovered that I have different attitudes	2	28,6%	1	100,0%	3	37,5%	40,0%
B - The Bachelor program did not mirror my expectations	3	42,9%	0	0,0%	3	37,5%	20,0%
C- I have not been admitted to the Bachelor Program selected as first-choice.	0	0,0%	0	0,0%	0	0,0%	0,0%
D- The campus and its facilities and services were not up to my expectations	1	14,3%	0	0,0%	1	12,5%	20,0%
E- I would have preferred to attend the same Bachelor Program but taught in English.	0	0,0%	0	0,0%	0	0,0%	0,0%
F - Other reasons	1	14,3%	0	0,0%	1	12,5%	20,0%
Total	7	100%	1	100%	8	100%	100%
NA	1		1		2		

F- Other reasons:

Ho avuto problemi di salute seri

General satisfaction and short-term plans

3) In the near future do you intend to:

	Italian School career		Int.nal School Career		Total		2019 %
	a.v.	%	a.v.	%	2020 a.v.	%	
A- To go on with university studies at Bocconi (Master of Science, one-year Master of Science)	46	69,7%	3	21,4%	49	61,3%	79,3%
B-To go on with university studies at another Italian University	5	7,6%	1	7,1%	6	7,5%	5,4%
C- To go on with university studies abroad	10	15,2%	8	57,1%	18	22,5%	13,0%
D - To immediately look for a job	4	6,1%	2	14,3%	6	7,5%	2,2%
E - To accept a job proposal received	0	0,0%	0	0,0%	0	0,0%	0,0%
F - To continue to do the job started during this degree program	1	1,5%	0	0,0%	1	1,3%	0,0%
Total	66	100%	14	100%	80	100%	100%
NA	10		2		12		

4) If you intend to continue your university studies at another University (in Italy or abroad), what are the reasons for your choice? (multiple answers admitted)

	Italian School career		Int.nal School Career		Total		2019 %
	a.v.	%	a.v.	%	2020 a.v.	%	
A - I would like to attend a more prestigious university	3	9,7%	1	5,9%	4	8,3%	18,2%
B - I would like to build a strong international curriculum	8	25,8%	5	29,4%	13	27,1%	45,5%
C- I can not bear the cost of studies (tuition fees and cost of living)	3	9,7%	2	11,8%	5	10,4%	4,5%
D - I can not bear the cost of studies (tuition fees and cost of living)	2	6,5%	1	5,9%	3	6,3%	4,5%
E- The administrative services are not sufficiently efficient	1	3,2%	1	5,9%	2	4,2%	0,0%
F - I think that the contents of Bocconi's MSc programs do not differ much from those of undergraduate programs	4	12,9%	4	23,5%	8	16,7%	13,6%
G - Other reasons	10	32,3%	3	17,6%	13	27,1%	13,6%
Total	31	100%	17	100%	48	100%	100%
NA	0		0		0		

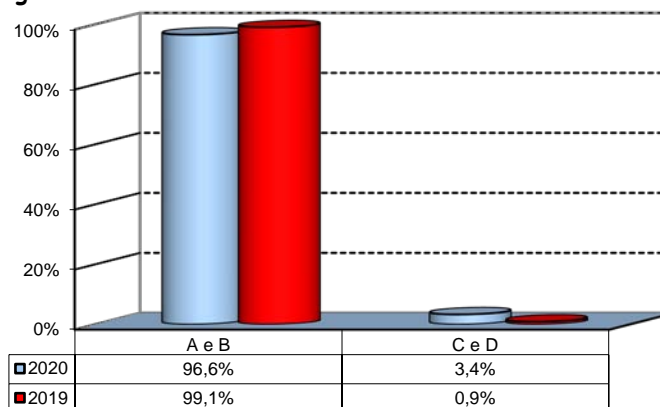
G - Other reasons:

better ranking
Bocconi puts too much unnecessary stress/pressure
Course not offered at Bocconi
desidero cambiare ambito
Desidero frequentare persone pi simpatiche
GPA too high to enter the program I wanted to enter (finance). GPA is not the only thing, evaluate curriculum and experiences!!
I am not interested in the programs offered in the MSc in Bocconi. Moreover, I really want to move to another environment and context
I do not like the msc programmes at Bocconi. My field (economics) is too matematically oriented in my opinion. Abroad it is a different story.
I have discovered other interests which I would like to pursue, and which are not explored as fields of study in any Bocconi Masters degree
Non ho una media sufficientemente alta per poter proseguire gli studi in Bocconi e penso che sarebbero stati forse troppo impegnativi a livello
Non mi interessano i contenuti delle lauree magistrali
Non sono stato ammesso
not admitted in my desired Bocconi MSc programs

Infrastructure: Classrooms, Library And Facilities

1) What is your opinion about the classrooms where lessons and other teaching activities have been held?*

Answers	a.v.	%
A - Always or nearly always adequate	54	60,7%
B - Often adequate	32	36,0%
C - Rarely adequate	3	3,4%
D - Never adequate	0	0,0%
E - I did not use them	0	0,0%
Total	89	100%
NA	3	

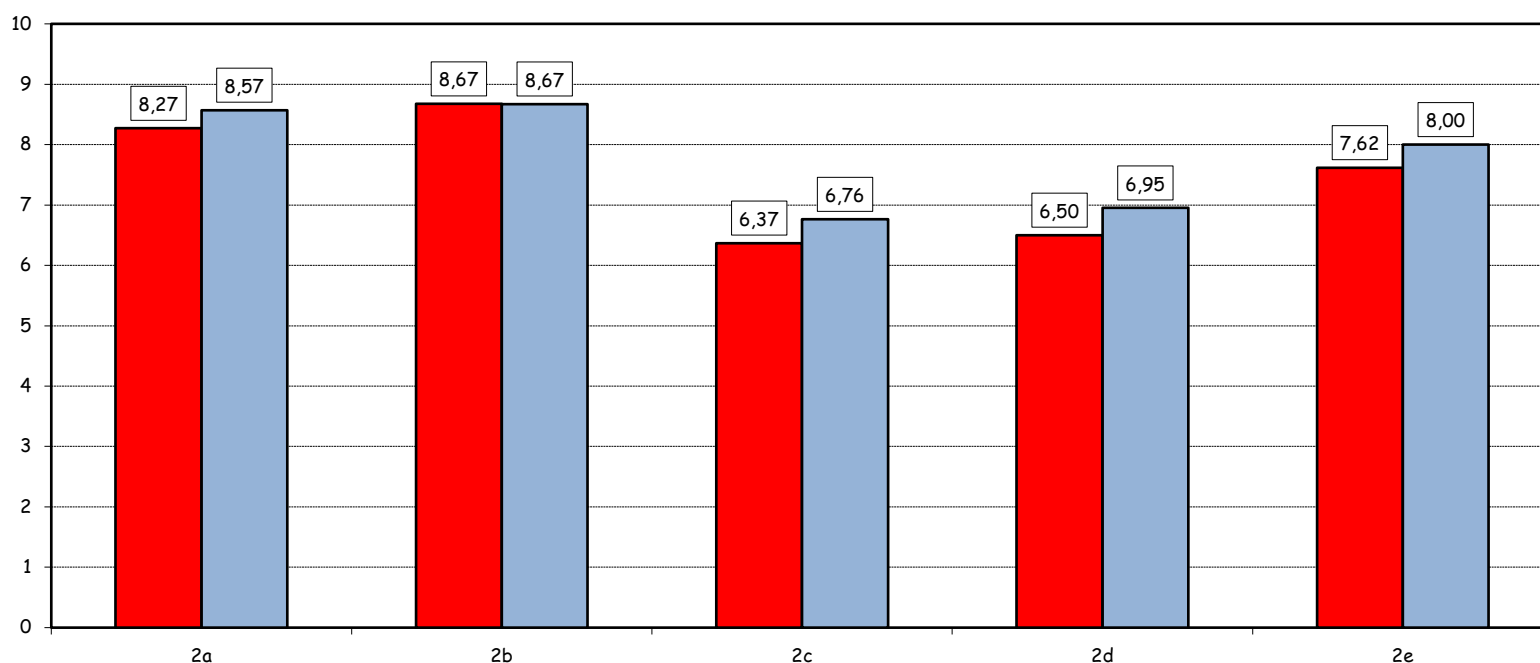


2) How would you evaluate:

Item	Answers	Negative				Positive				Total		NA	N.R.
		1-2		3-4-5		6-7-8		9-10		a.v.	%		
		a.v.	%	a.v.	%	a.v.	%	a.v.	%				
a) The adequacy of the audio and multimedia systems (e.g. instructor's computer, projectors, video players) installed in the classrooms		0	0,0	3	3,4	50	56,2	36	40,4	89	100,0		3
b) The cleanliness of classrooms and of other common areas on campus (corridors, halls, study rooms)		1	1,1	0	0,0	32	36,0	56	62,9	89	100,0		3
c) The adequacy of the amount of areas/seats reserved to individual study in the University Library		11	13,1	18	21,4	38	45,2	17	20,2	84	100,0	0	8
d) The adequacy of the amount of areas/seats reserved to individual study in other buildings on campus		7	8,1	17	19,8	50	58,1	12	14,0	86	100,0	2	4
e) The clarity and adequacy of the signage system on campus		0	0,0	9	10,1	58	65,2	22	24,7	89	100,0		3

Over time comparison of average values

■ 2020 ■ 2019

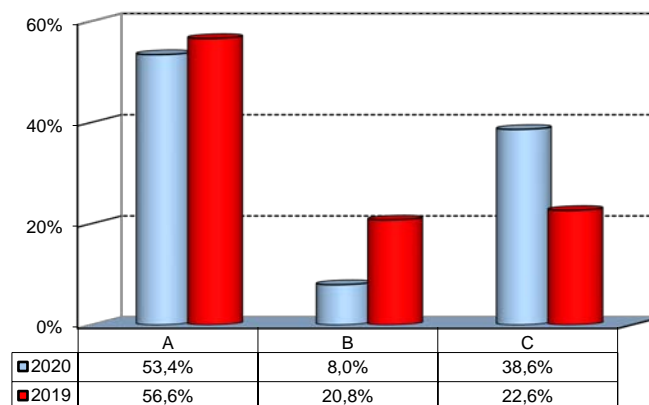


(*): the percentage shown on the graphs is calculated by excluding the responses of those who declare that they have not used the service.

Infrastructure: Classrooms, Library And Facilities

3) What is your overall opinion on the PC Labs and IT facilities provided by the University?

Answers	a.v.	%
A- Adequate in number	47	53,4%
B- Inadequate in number	7	8,0%
C- Never used	34	38,6%
Total	88	100%
NA	4	

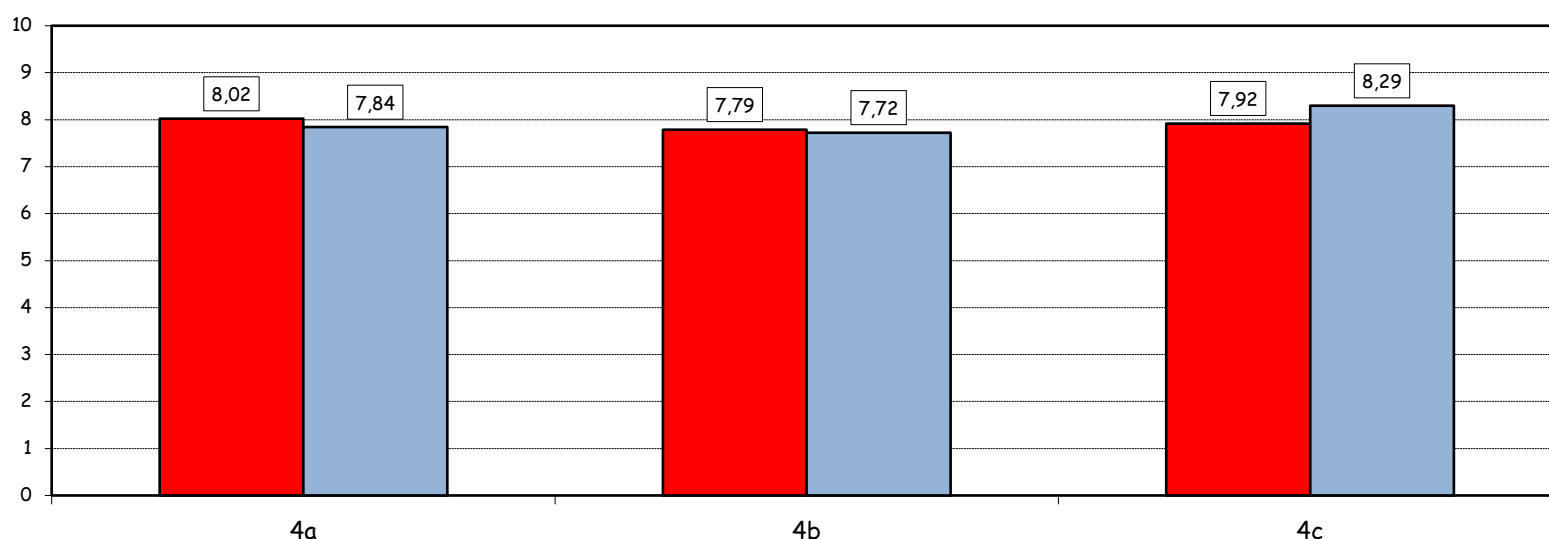


4) How would you evaluate:

Answers	Negative				Positive				Total		NA
	1-2		3-4-5		6-7-8		9-10				
	a.v.	%	a.v.	%	a.v.	%	a.v.	%	a.v.	%	
a) The availability of technical staff supporting students (Tutors) in PC Labs^	0	0,0	2	3,6	34	61,8	19	34,5	55	100,0	-1
b) The convenience of the PC Labs' opening hours^	0	0,0	1	1,9	40	76,9	11	21,2	52	100,0	2
c) The level of accessibility and usability of the University's IT services (Internet access points, Punto Blu, Virtual Punto Blu, wireless connection)	0	0,0	3	3,4	55	63,2	29	33,3	87	100,0	5

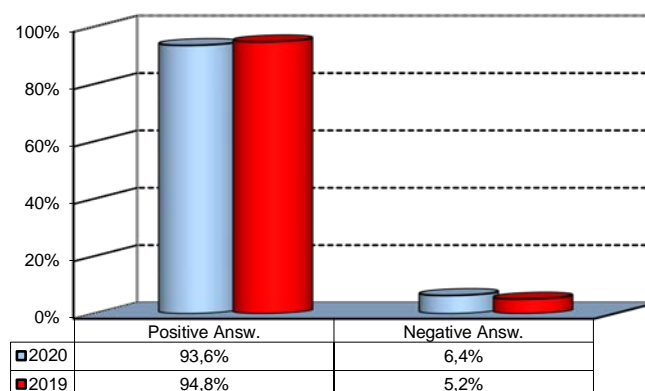
Over time comparison of average values

■ 2020 ■ 2019



5) What is your overall opinion on the Library's services, such as support for individual study?*

Answers	a.v.	%
A - Very Positive	28	31,5%
B - Quite positive	45	50,6%
C - Quite negative	5	5,6%
D - Very Negative	0	0,0%
E - Never used	11	12,4%
Total	89	100%
NA	3	



(^): Only in case of answer "A" or "B" to item no.3

(*): the percentage shown on the graphs is calculated by excluding the responses of those who declare that they have not used the service.