

“EVALUATION OF UNIVERSITY EXPERIENCE”

STATISTICAL RESULTS FOR THE MASTER OF SCIENCE DIRECTOR

Politics and Policy Analysis

a.y. 2019-2020

Survey period: July 2020 - July 2021

N. of completed questionnaires: 31

N. of graduate students: 34

Response rate: 91,2%

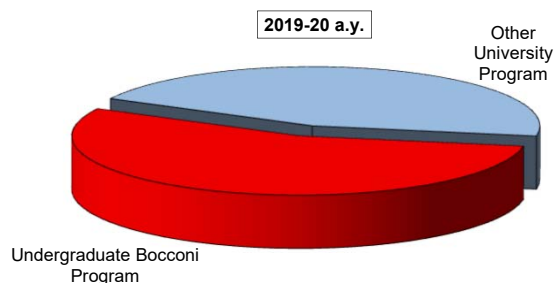
EVALUATION OF UNIVERSITY EXPERIENCE

Politics and Policy Analysis

General information

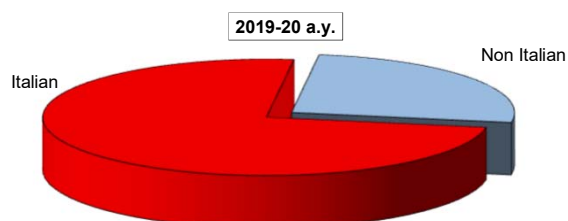
Undergraduate Career

Answers	%	
	a.v.	2019-20
Undergraduate Bocconi Program	17	54,8
Other University Program	14	45,2
Total	31	100,0
NA	0	



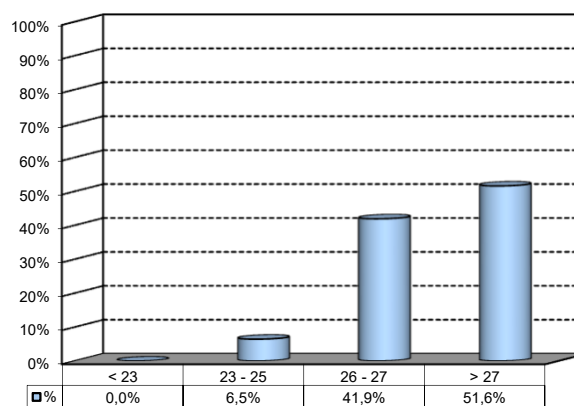
Nationality

Answers	%	
	a.v.	2019-20
Italian	23	74,2%
Non Italian	8	25,8%
Total	31	100%
NA	0	



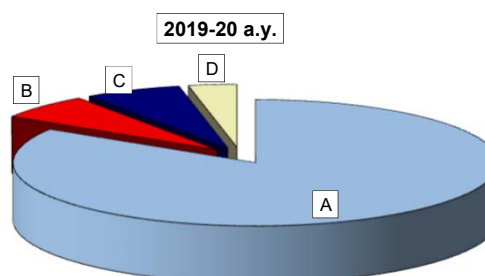
Average mark of the exams passed:
(approximate average expressed in 30/30)

Answers	a.v.	%
18	0	0,0%
19	0	0,0%
20	0	0,0%
21	0	0,0%
22	0	0,0%
23	0	0,0%
24	0	0,0%
25	2	6,5%
26	6	19,4%
27	7	22,6%
28	6	19,4%
29	8	25,8%
30	2	6,5%
Total	31	100%
NA	0	



How many of the courses included in your curriculum did you attend regularly?

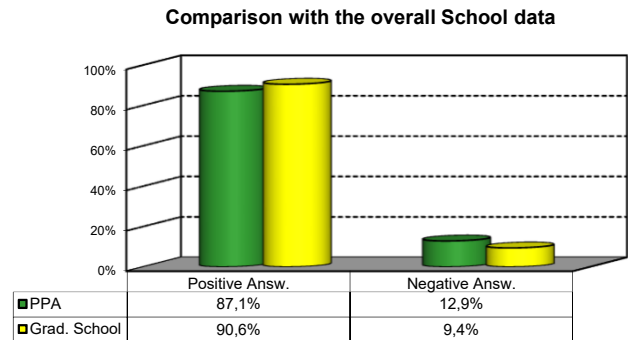
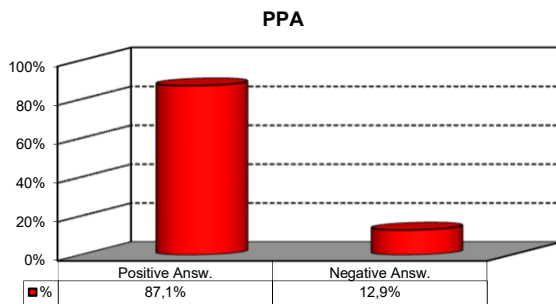
Answers	%	
	a.v.	2019-20
A - More than 75%	26	83,9
B - Between 50 and 75%	2	6,5
C - Between 25 and 50%	2	6,5
D - Less than 25%	1	3,2
Total	31	100,0
NA	0	



Study Experience

1) On the whole, do you think that the MSc program you attended at Bocconi enabled in-depth study of topics in both a theoretical and a practical sense?

Answers	Italian		Non Italian		Total	
	a.v.	%	a.v.	%	a.v.	%
A - Definitely YES	8	34,8%	3	37,5%	11	35,5%
B - More YES than NO	11	47,8%	5	62,5%	16	51,6%
C - More NO than YES	4	17,4%	0	0,0%	4	12,9%
D - Definitely NO	0	0,0%	0	0,0%	0	0,0%
Total	23	100%	8	100%	31	100%
NA	0		0			

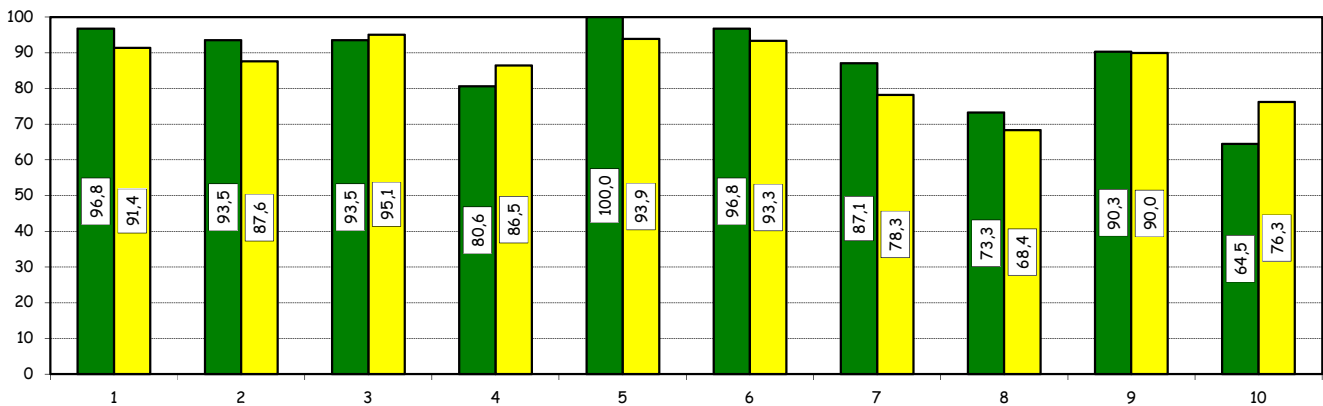


Study Experience

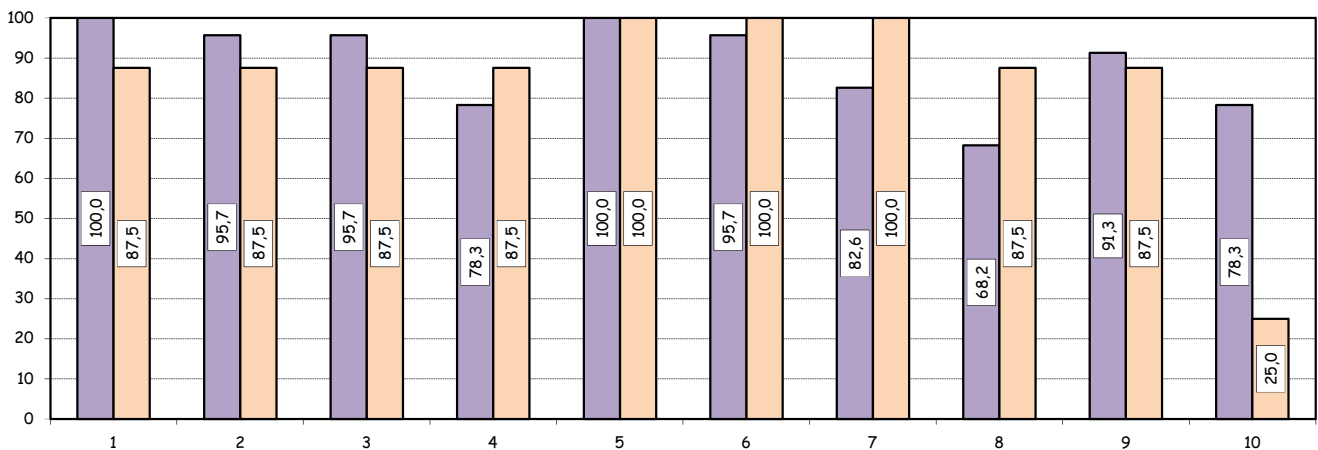
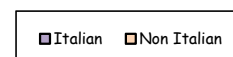
2) Do you think that your course of study at Bocconi has contributed to the development of the following skills?

Soft Skill	Item	Definitely YES		More YES than NO		More NO than YES		Definitely NO		Total		n.a.
		a.v.	%	a.v.	%	a.v.	%	a.v.	%	a.v.	%	a.v.
1	Ability to work in team	21	67,7	9	29,0	1	3,2	0	0,0	31	100,0	0
2	Interpersonal skills	17	54,8	12	38,7	2	6,5	0	0,0	31	100,0	0
3	Organizational skills	19	61,3	10	32,3	2	6,5	0	0,0	31	100,0	0
4	Critical thinking skills	13	41,9	12	38,7	6	19,4	0	0,0	31	100,0	0
5	Ability to analyze and select information	17	56,7	13	43,3	0	0,0	0	0,0	30	100,0	1
6	Problem-solving ability	14	45,2	16	51,6	1	3,2	0	0,0	31	100,0	0
7	Written communication skills	10	32,3	17	54,8	4	12,9	0	0,0	31	100,0	0
8	Verbal communication skills	9	30,0	13	43,3	8	26,7	0	0,0	30	100,0	1
9	Ability to cope with stress	17	54,8	11	35,5	1	3,2	2	6,5	31	100,0	0
10	Entrepreneurial spirit	11	35,5	9	29,0	10	32,3	1	3,2	31	100,0	0

Positive answers (%):
comparison with the overall School data



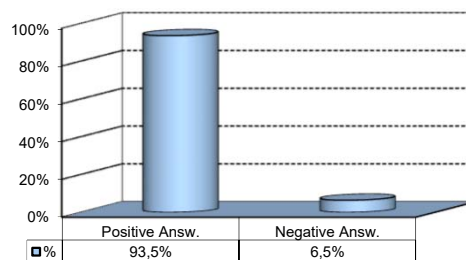
Positive answers (%):
comparison based on nationality of student



Study Experience

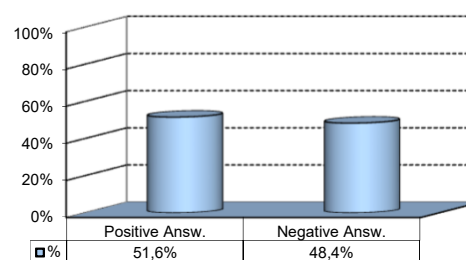
3) Do you think that teaching activities in the MSc program were structured in an active manner (frequent use of teamwork, case studies, assignments, etc.)?

Answers	a.v.	%
A - Definitely YES	15	48,4%
B - More YES than NO	14	45,2%
C - More NO than YES	2	6,5%
D - Definitely NO	0	0,0%
Total	31	100%
NA	0	



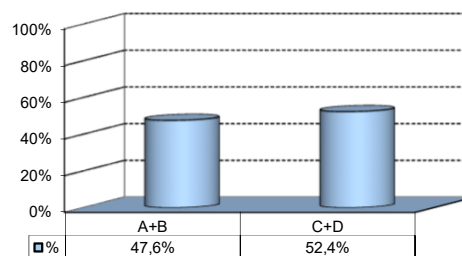
4) Do you think that the courses in your curriculum were adequately coordinated with each other?

Answers	a.v.	%
A - Definitely YES	2	6,5%
B - More YES than NO	14	45,2%
C - More NO than YES	9	29,0%
D - Definitely NO	6	19,4%
Total	31	100%
NA	0	



5) During the MSc program, did you notice any unnecessary overlaps or repetitions of subjects and content with what you studied during your undergraduate program?

Answers	a.v.	%
A-Very often	2	9,5%
B-Often	8	38,1%
C-Hardly ever	10	47,6%
D-Never	1	4,8%
Total	21	100%
NA	10	



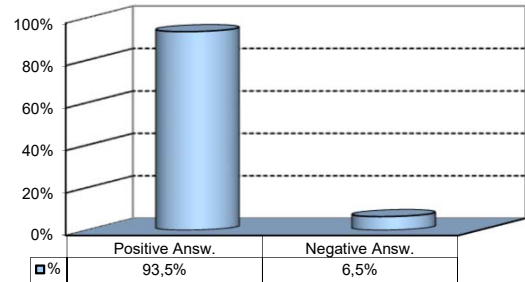
Please select the course or courses in the MSc program in which you encountered overlaps or unnecessary repetitions (multiple answers admitted)

Course	a.v.	%
WELFARE AND PUBLIC ECONOMICS	7	31,8%
METHODS AND TOOLS FOR POLICY ANALYSIS	4	18,2%
ECONOMICS AND POLITICS	3	13,6%
Other	8	36,4%
TOTAL	22	100,0%

Study Experience

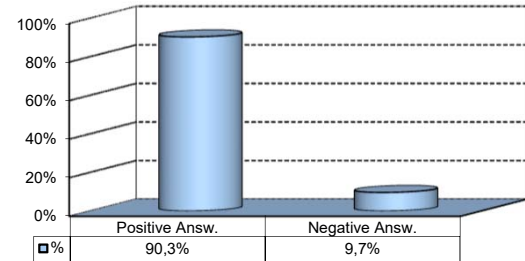
6) Do you think that the overall study load was compatible with the length of the program?

Answers	a. v.	%
A - Definitely YES	6	19,4%
B - More YES than NO	23	74,2%
C - More NO than YES	2	6,5%
D - Definitely NO	0	0,0%
Total	31	100%
NA	0	



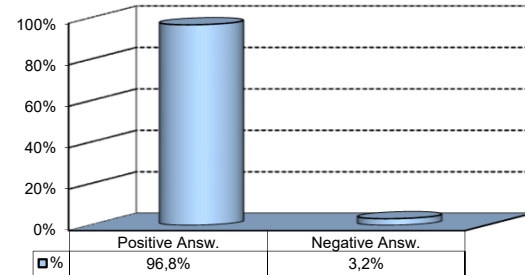
7) Was the coordination of the study program appropriately managed by the Program Director?

Answers	a. v.	%
A - Definitely YES	11	35,5%
B - More YES than NO	17	54,8%
C - More NO than YES	3	9,7%
D - Definitely NO	0	0,0%
Total	31	100%
NA	0	



8) On the whole, were the classroom climate and relationships with your classmates positive and able to enrich your personal experience?

Answers	a. v.	%
A - Definitely YES	16	51,6%
B - More YES than NO	14	45,2%
C - More NO than YES	1	3,2%
D - Definitely NO	0	0,0%
Total	31	100%
NA	0	

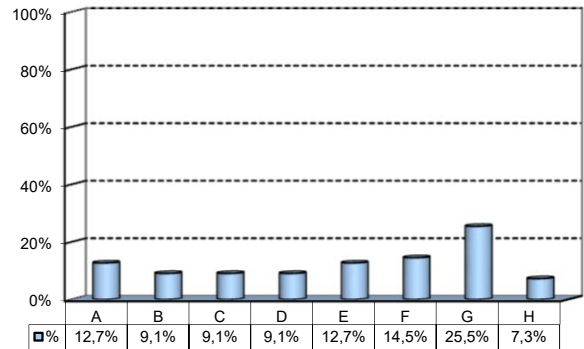


Extracurricular Activities

1) Which of the following extracurricular activities did you attend during your study program?

(multiple answers admitted)

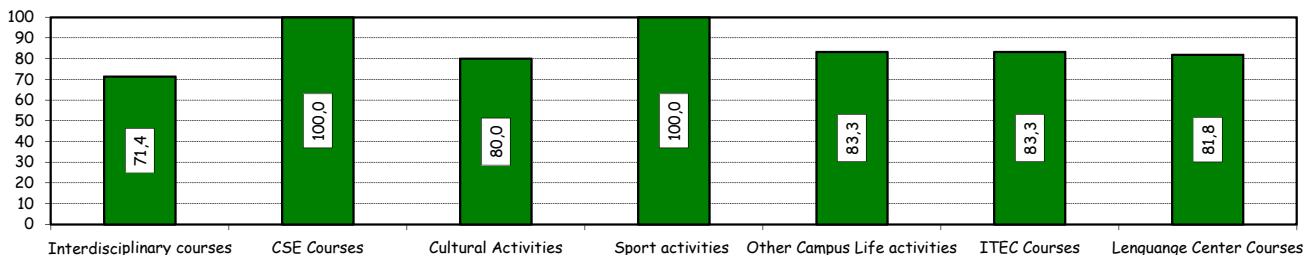
Answers	a.v.	%
A - Interdisciplinary courses ("Sapere a tutto campo")	7	12,7%
B - Counseling and Self-Empowerment courses CSE	5	9,1%
C - Cultural Activities (visit museums, concerts, theatre and cinema, various issues)	5	9,1%
D - Sport activities	5	9,1%
E - Other Campus Life activities	7	12,7%
F - Courses offered by ITEC	8	14,5%
G - Courses offered by Language Center	14	25,5%
H - None	4	7,3%
Total	55	100%
NA	0	



2) Do you think that the activities you took part in contributed to your cultural/educational enrichment?

	Definitely YES		More YES than NO		More NO than YES		Definitely NO		Total		NA
	a.v.	%	a.v.	%	a.v.	%	a.v.	%	a.v.	%	a.v.
A - Interdisciplinary courses (Sapere a tutto campo)	1	14,3	4	57,1	2	28,6	0	0,0	7	100,0	0
B - Counseling and Self-Empowerment courses (CSE)	3	60,0	2	40,0	0	0,0	0	0,0	5	100,0	0
C - Cultural Activities	3	60,0	1	20,0	1	20,0	0	0,0	5	100,0	0
D - Sport activities	3	60,0	2	40,0	0	0,0	0	0,0	5	100,0	0
E - Other Campus Life activities	1	16,7	4	66,7	1	16,7	0	0,0	6	100,0	1
F - Courses offered by ITEC	1	16,7	4	66,7	1	16,7	0	0,0	6	100,0	2
G - Courses offered by Language Center	5	45,5	4	36,4	2	18,2	0	0,0	11	100,0	3

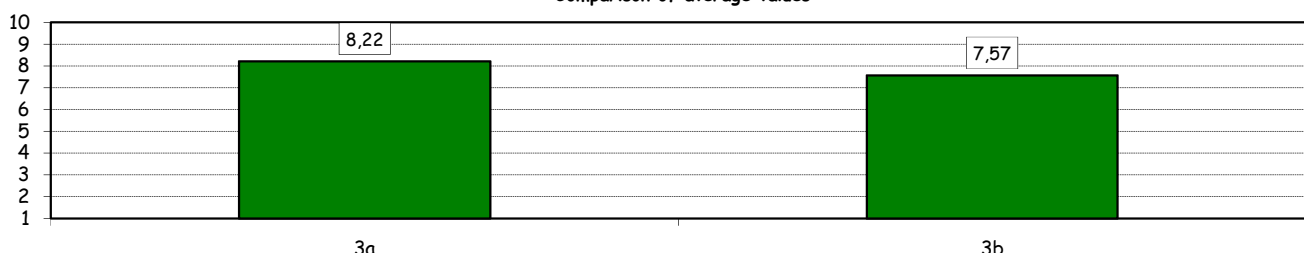
Positive answers (%):



How would you evaluate:

Item	Answers	Negative				Positive				Total		NA
		1-2		3-4-5		6-7-8		9-10		a.v.	%	
		a.v.	%	a.v.	%	a.v.	%	a.v.	%			
3a) The range and interest of programmes offered		0	0,0	2	8,7	9	39,1	12	52,2	23	100,0	4
3b) The support you received from the Campus Life Office		0	0,0	4	17,4	11	47,8	8	34,8	23	100,0	4

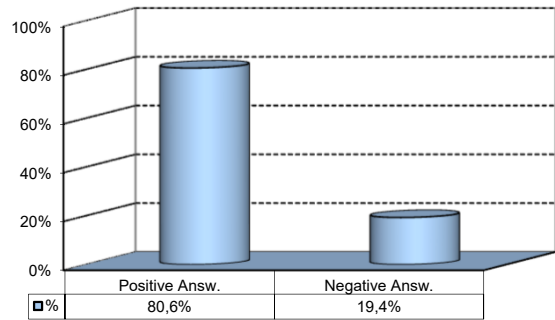
Comparison of average values



Degree Thesis

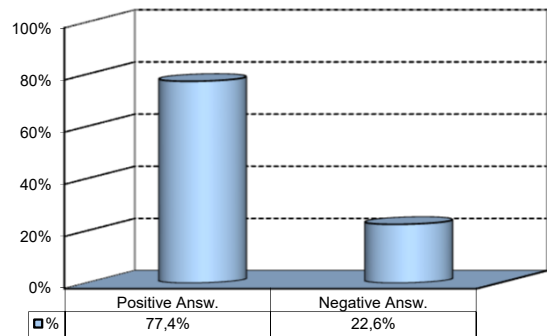
1) Do you think that the supervision and the assistance for preparing for your thesis were appropriate?

Answers	a.v.	%
A - Definitely YES	16	51,6%
B - More YES than NO	9	29,0%
C - More NO than YES	6	19,4%
D - Definitely NO	0	0,0%
Total	31	100%
NA	0	



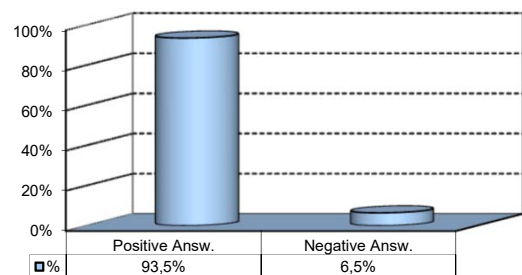
2) Do you think that the facilities provided by the University (library, computer labs) adequately supported preparation for your thesis?

Answers	a.v.	%
A - Definitely YES	7	22,6%
B - More YES than NO	17	54,8%
C - More NO than YES	6	19,4%
D - Definitely NO	1	3,2%
Total	31	100%
NA	0	



3) Do you think that your thesis was a useful experience for completing your education and a way to verify your planning and writing skills?

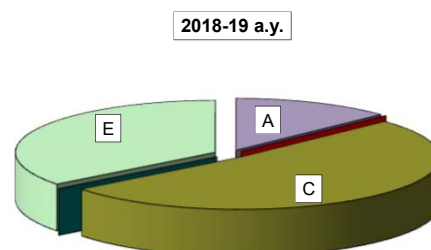
Answers	a.v.	%
A - Definitely YES	15	48,4%
B - More YES than NO	14	45,2%
C - More NO than YES	1	3,2%
D - Definitely NO	1	3,2%
Total	31	100%
NA	0	



Experience Of Studying Abroad

1) Please select the program you participated in:

Answers	%	
	a.v.	2019-20
A - Exchange	4	12,9
B - CEMS-MIM	0	0,0
C- Double Degree	16	51,6
D - Free-Mover	0	0,0
E- None	11	35,5
Total	31	100,0
NA	0	

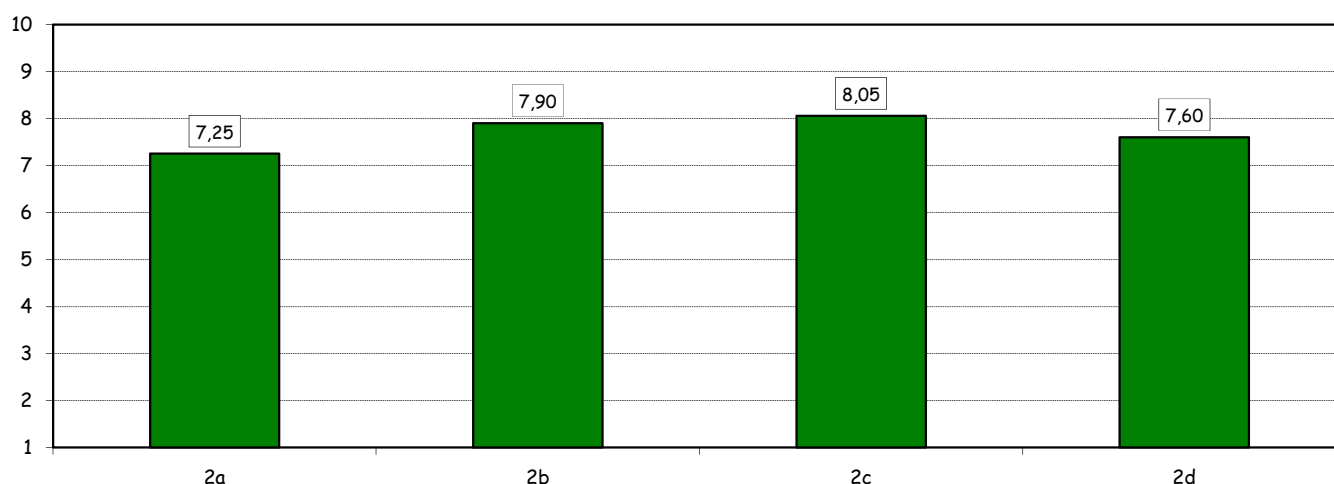


How would you evaluate:

(only A, B, C or E answers to item no.1)

Item	Answers	Negative				Positive				Total		N.A. a.v.
		1-2		3-4-5		6-7-8		9-10		a.v.	%	
		a.v.	%	a.v.	%	a.v.	%	a.v.	%			
2a) Quality and completeness of information provided through: 'International Week', emails, brochures, International Relations Service web page.		0	0,0	5	25,0	8	40,0	7	35,0	20	100,0	0
2b) The range and interest of programs offered.		0	0,0	4	20,0	6	30,0	10	50,0	20	100,0	0
2c) The convenience of the study abroad desk's opening hours.		0	0,0	3	15,8	7	36,8	9	47,4	19	100,0	1
2d) The support you received from Bocconi International Relations.		1	5,0	4	20,0	6	30,0	9	45,0	20	100,0	0

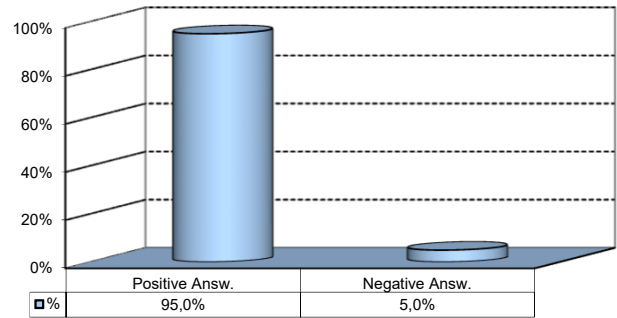
Over time comparison



Experience Of Studying Abroad

3) Would you positively evaluate this experience?

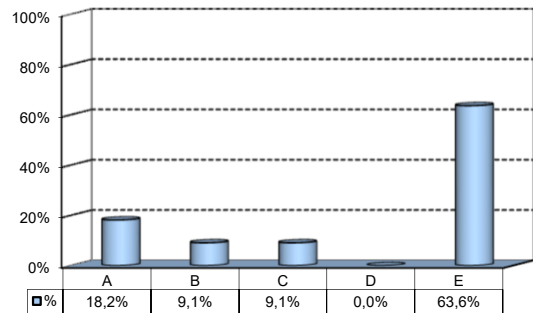
Answers	v. a.	%
A - Definitely YES	13	65,0%
B - More YES than NO	6	30,0%
C - More NO than YES	0	0,0%
D - Definitely NO	1	5,0%
Total	20	100%
NA	0	



(In case of answer "E" to item no.1)

4) Please indicate why you did not attend a period of study abroad (select all relevant reasons):

Answers	a. v.	%
A-Lack of interest in this kind of experience	2	18,2%
B-Absence of the requirements needed for participation in the program selected	1	9,1%
C-Rejection of your application	1	9,1%
D-Lack of time during the period of study	0	0,0%
E-Other (personal, family, organizational reasons, etc.)	7	63,6%
Total	11	100%
NA	0	



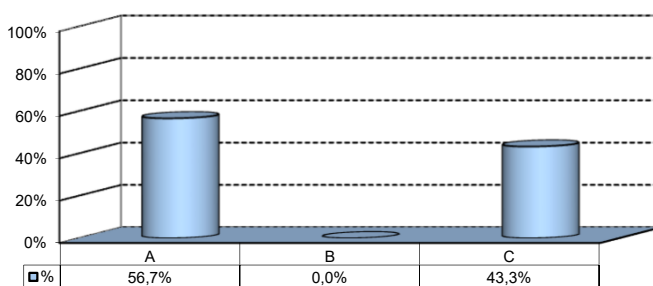
Internship Activities

1) Which activity recognized in your curriculum did you complete during the MSc program?

Answers	%	
	a.v.	2019-20
A - Internship	30	96,8
B - Other job experience (with any contract different from Internship)	0	0,0
C - Field Project	1	3,2
D - None	0	0,0
Total	31	100,0
NA	0	

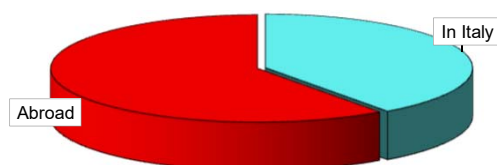
2) How did you find the internship?

Answers	%	
	a.v.	%
A - Through the University's Placement Services*	17	56,7%
B - Through the faculty members of the degree program	0	0,0%
C - Through autonomous way then recognized by the degree program	13	43,3%
Total	30	100,0%
NA	0	



3) Where did you complete the internship recognized by the Bachelor program?

Answers	%	
	a.v.	2019-20
In Italy	12	40,0%
Abroad	18	60,0%
Total	30	100%
NA	0	



*JobGate, Internship Programs, meetings and company presentations, Bocconi&Jobs, Placement Library services, websites in the Lavoro.net section

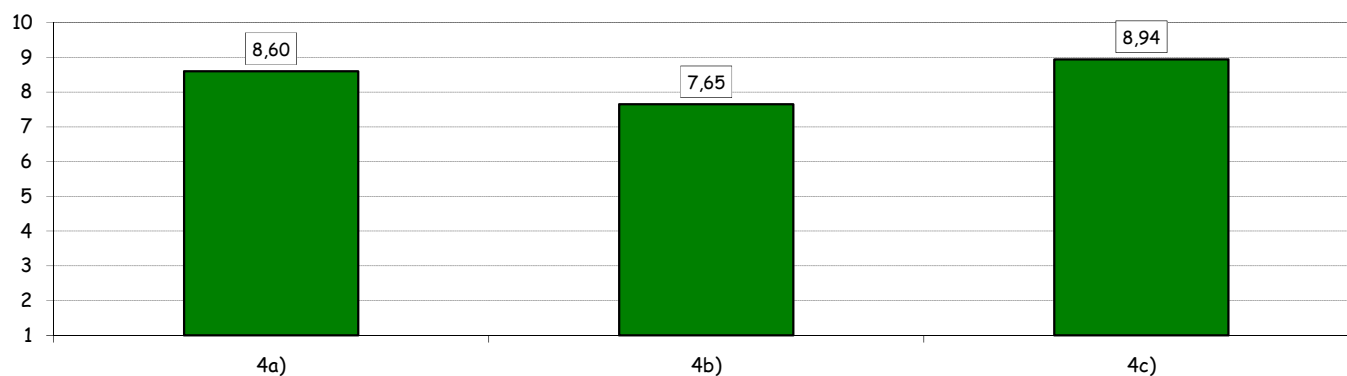
Internship Activities

How would you evaluate:

(in case of answer A to item n.2)

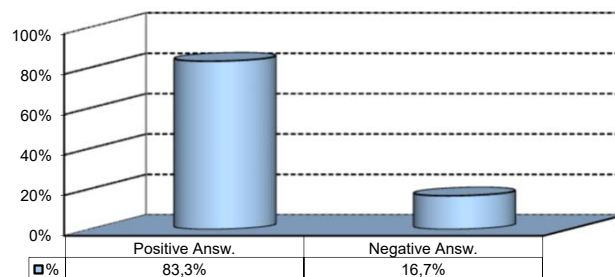
Item	Answers	Negative				Positive				Total		N.A.
		1-2		3-4-5		6-7-8		9-10		a.v.	%	a.v.
		a.v.	%	a.v.	%	a.v.	%	a.v.	%			
4a) The convenience of the internship front desk's opening hours.		0	0,0	0	0,0	6	40,0	9	60,0	15	100,0	2
4b) The number and variety of opportunities offered.		0	0,0	2	11,8	10	58,8	5	29,4	17	100,0	0
4c) The support you received from the Internship Office.		0	0,0	0	0,0	6	35,3	11	64,7	17	100,0	0

Comparison of average values



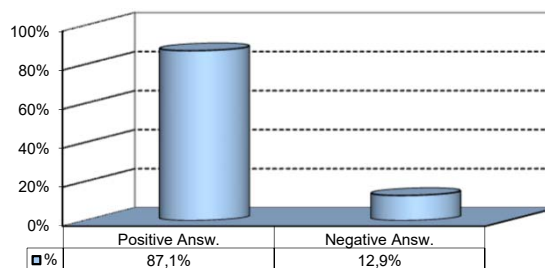
5) Would you positively evaluate this experience?

Answers	a.v.	%
A - Definitely YES	17	56,7%
B - More YES than NO	8	26,7%
C - More NO than YES	4	13,3%
D - Definitely NO	1	3,3%
Total	30	100%
NA	1	



6) Do you think that the qualifications you acquired while attending the MSc program were appropriate to perform this activity?

Answers	a.v.	%
A - Definitely YES	13	41,9%
B - More YES than NO	14	45,2%
C - More NO than YES	4	12,9%
D - Definitely NO	0	0,0%
Total	31	100%
NA	0	

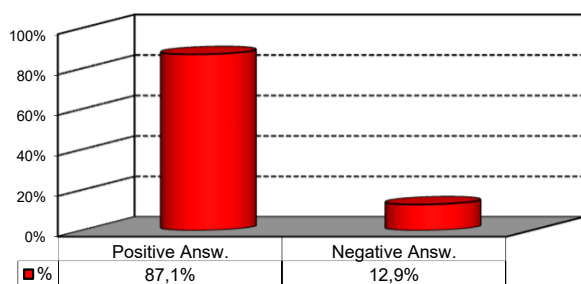


General satisfaction and short-term plans

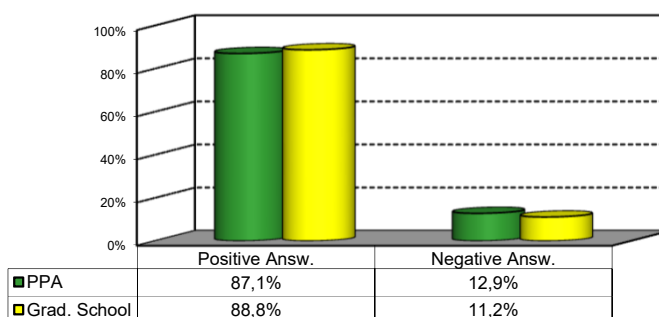
1) Are you satisfied overall with the study program you attended?

Answers	Italian		Non Italian		Total	
	a.v.	%	a.v.	%	a.v.	%
A - Definitely YES	6	26,1%	4	50,0%	10	32,3%
B - More YES than NO	14	60,9%	3	37,5%	17	54,8%
C - More NO than YES	2	8,7%	1	12,5%	3	9,7%
D - Definitely NO	1	4,3%	0	0,0%	1	3,2%
Total	23	100%	8	100%	31	100%
NA	0		0		0	

PPA



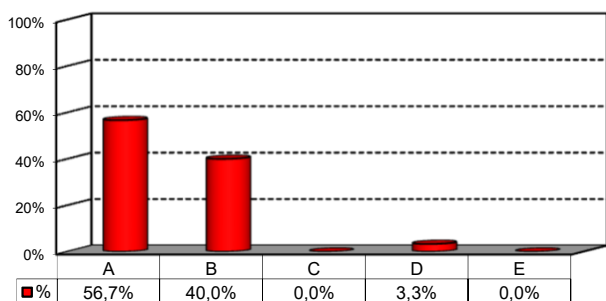
Comparison with the overall School data



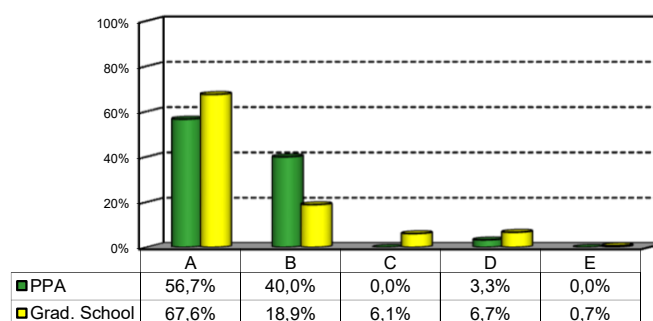
2a) If you could go back in time, would you enroll in the University again?

Answers	Italian		Non Italian		Total	
	v.a.	%	v.a.	%	v.a.	%
A-YES, in the same program at this University	12	52,2%	5	71,4%	17	56,7%
B-YES, in another program at this University	10	43,5%	2	28,6%	12	40,0%
C-YES, in the same program but at another University	0	0,0%	0	0,0%	0	0,0%
D-YES, in another program at another University	1	4,3%	0	0,0%	1	3,3%
E-NO, I would not enrol in university anymore	0	0,0%	0	0,0%	0	0,0%
Total	23	100%	7	100%	30	100%
NA	0		1		1	

PPA



Comparison with the overall School data



General satisfaction and short-term plans

(In case of answer "B" to item no.2a)

2b) Which program would you enroll at this University?

MSc	a.v.	%
ACME	0	0,0%
AFC	0	0,0%
FIN	0	0,0%
CLELI	0	0,0%
ESS	0	0,0%
EMIT	0	0,0%
GIO	3	100,0%
IM	0	0,0%
M	0	0,0%
MM	0	0,0%
Total	3	100%
NA	9	

2c) Why would you make a different choice?

(In case of answer "B", "C", "D" or "E" to item no.2a)

Answers	a.v.	% 2019-20
A - My interest has changed over time / I discovered that I have different attitudes	1	9,1%
B - The Bachelor program did not satisfy my expectations	3	27,3%
C - I would have preferred to attend a Bachelor program with a more generalist approach	0	0,0%
D - I would have preferred to attend a Bachelor program with a more specialist approach	3	27,3%
E - I would have preferred to attend the same Bachelor program but taught in English	0	0,0%
F - I have not been admitted to the program selected as first-choice	2	18,2%
G - The campus and its facilities and services were not up to my expectations	0	0,0%
H - Other reasons	2	18,2%
Total	11	100%
NA	2	

H- Other reasons:

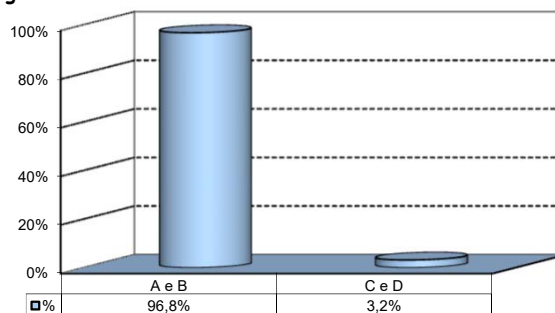
Avrei preferito un corso di laurea più quantitativo e "duro" da un punto di vista teorico

I wish I had selected a program that allowed the development of more analytical abilities (actually using Stata/R/SPSS rather than simply learning basic econometric techniques).

Infrastructure: Classrooms, Library And Facilities

1) What is your opinion about the classrooms where lessons and other teaching activities have been held?*

Answers	a.v.	%
A - Always or nearly always adequate	23	74,2%
B - Often adequate	7	22,6%
C - Rarely adequate	1	3,2%
D - Never adequate	0	0,0%
E - I did not use them	0	0,0%
Total	31	100%
NA	0	

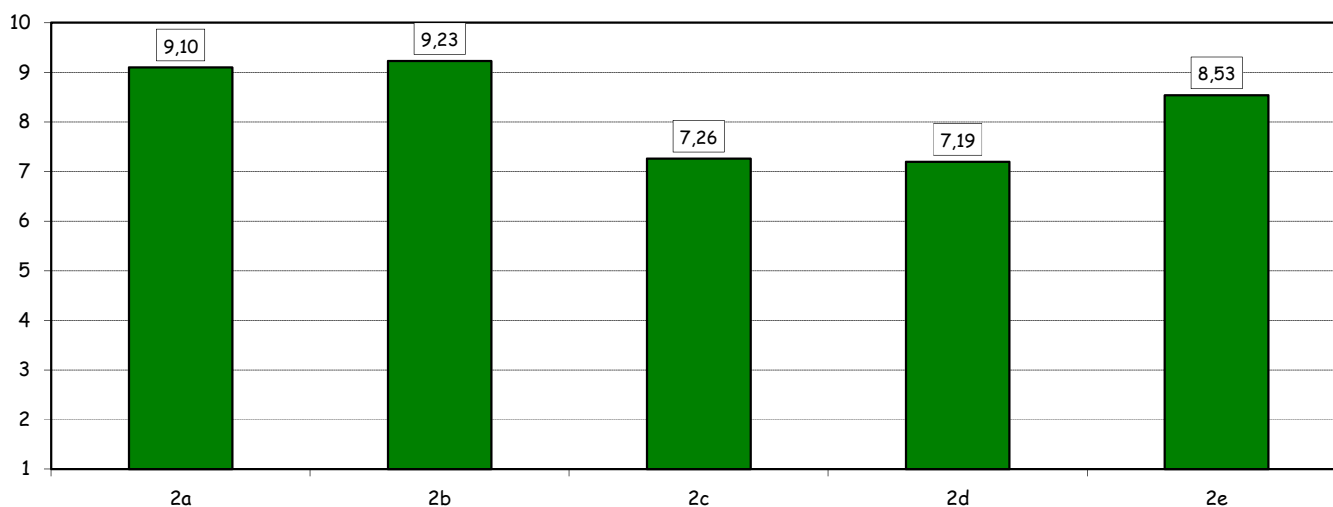


2) How would you evaluate:

(In case of answer "A", "B", "C" or "D" to item no.1)

Item	Answers	Negative				Positive				Total		NA	N.R.
		1-2		3-4-5		6-7-8		9-10		a.v.	%		
		a.v.	%	a.v.	%	a.v.	%	a.v.	%				
a) The adequacy of the audio and multimedia systems (e.g. instructor's computer, projectors, video players) installed in the classrooms.		0	0,0	0	0,0	6	19,4	25	80,6	31	100,0		0
b) The cleanliness of classrooms and of other common areas on campus (corridors, halls, study rooms).		0	0,0	1	3,2	6	19,4	24	77,4	31	100,0		0
c) The adequacy of the amount of areas/seats reserved to individual study in the University Library.		1	3,2	4	12,9	17	54,8	9	29,0	31	100,0	0	0
d) The adequacy of the amount of areas/seats reserved to individual study in other buildings on campus.		1	3,2	4	12,9	18	58,1	8	25,8	31	100,0	0	0
e) The clarity and adequacy of the signage system on campus.		0	0,0	2	6,7	11	36,7	17	56,7	30	100,0		1

Comparison of average values

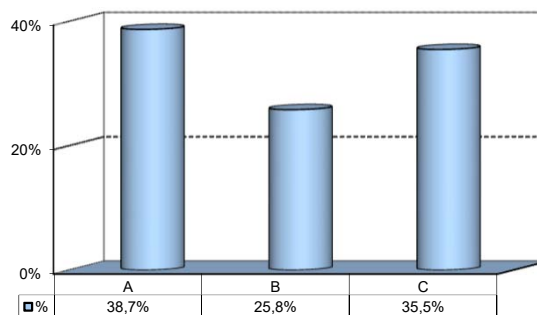


(*): the percentage shown on the graphs is calculated by excluding the responses of those who declare that they have not used the service.

Infrastructure: Classrooms, Library And Facilities

3) What is your overall opinion on the PC Labs and IT facilities provided by the University?

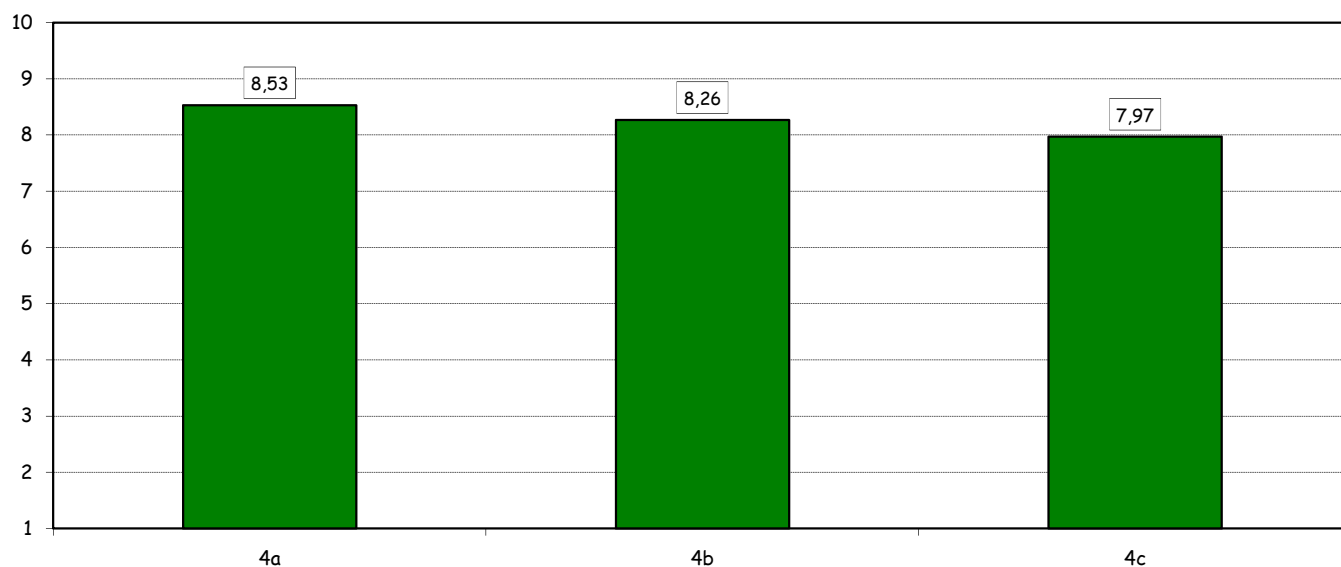
Answers	a.v.	%
A- Adequate in number	12	38,7%
B- Inadequate in number	8	25,8%
C- Never used	11	35,5%
Total	31	100%
NA	0	



4) How do you evaluate:

Item	Answers	Negative				Positive				Total		N.R.
		1-2		3-4-5		6-7-8		9-10		a.v.	%	
		a.v.	%	a.v.	%	a.v.	%	a.v.	%			
a) The availability of technical staff supporting students (Tutors) in PC Labs.*		0	0,0	1	5,3	10	52,6	8	42,1	19	100,0	1
b) The convenience of the PC Labs' opening hours.*		0	0,0	1	5,3	11	57,9	7	36,8	19	100,0	1
c) The level of accessibility and usability of the University's IT services (Internet access points, Punto Blu, Virtual Punto Blu, wireless connection).		2	6,7	1	3,3	12	40,0	15	50,0	30	100,0	1

Comparison of average values

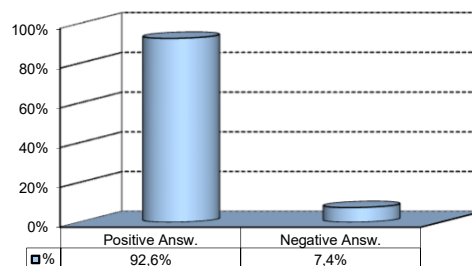


(*): Only in case of answer "A" or "B" to item no.3

Infrastructure: Classrooms, Library And Facilities

5) What is your overall opinion on the Library's services, such as support for individual study?*

Answers	a.v.	%
A - Very Positive	9	29,0%
B - Quite positive	16	51,6%
C - Quite negative	1	3,2%
D - Very Negative	1	3,2%
E - Never used	4	12,9%
Total	31	100%
NA	0	

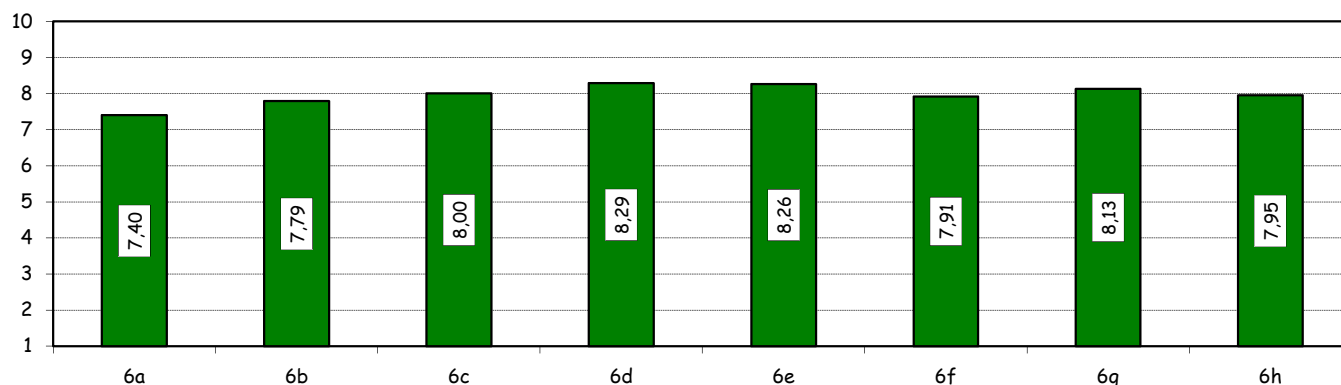


6) How would you evaluate:

(In case of answer "A", "B", "C" or "D" to item no. 5)

Item	Answers	Negative				Positive				Total		N.A.
		1-2		3-4-5		6-7-8		9-10		a.v.	%	a.v.
		a.v.	%	a.v.	%	a.v.	%	a.v.	%	a.v.	%	a.v.
a) The convenience of the Library's opening hours and access to its main services.		2	8,0	1	4,0	15	60,0	7	28,0	25	100,0	2
b) The range of collections available in the Library and the frequency they are updated (books, magazines, electronic resources, databases).		0	0,0	1	4,2	15	62,5	8	33,3	24	100,0	3
c) The speed of fulfillment of requests for documents provided by other Libraries.		0	0,0	0	0,0	15	68,2	7	31,8	22	100,0	5
d) The number of documents that may be borrowed and the duration of the loan period.		0	0,0	1	4,8	11	52,4	9	42,9	21	100,0	6
e) The assistance provided by the Library staff in bibliographic searches for specific topics and in the use of Library's print and electronic collections.		0	0,0	0	0,0	15	65,2	8	34,8	23	100,0	4
f) The efficiency and ease of use of the search tools provided (on and off campus).		0	0,0	0	0,0	17	73,9	6	26,1	23	100,0	4
g) The number of books and journals available on open shelves in the reading rooms.		0	0,0	0	0,0	14	58,3	10	41,7	24	100,0	3
h) The usefulness of workshops offered by the Library to understand how to use the resources available (catalogues, e-journals, databases, etc.).		0	0,0	0	0,0	13	65,0	7	35,0	20	100,0	7

Comparison of average values



(*): the percentage shown on the graphs is calculated by excluding the responses of those who declare that they have not used the service.