

## VALUTAZIONE ESPERIENZA UNIVERSITARIA

CORSO DI LAUREA IN  
**ECONOMICS, MANAGEMENT AND  
COMPUTER SCIENCE**  
A.S.2019



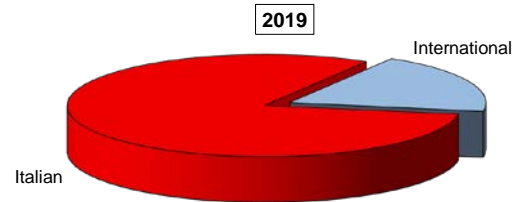
## EVALUATION OF STUDENT EXPERIENCE

### Bachelor of Science in Economics, Management and Computer Science

#### General information

##### School Career

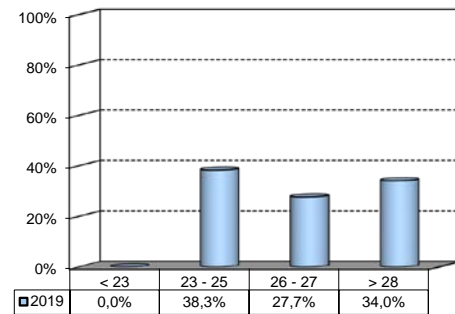
Answers	a.v.	%
	2019	
Italian	38	80,9%
International	9	19,1%
<b>Total</b>	<b>47</b>	<b>100%</b>
NA	0	



##### Average mark of the exams passed:

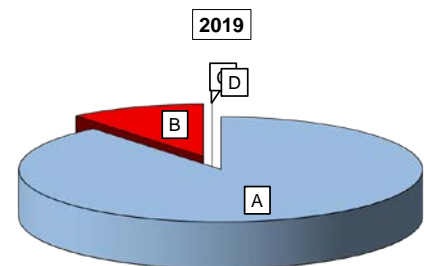
(approximate average expressed in 30/30)

Answers	a.v.	%
< 23	0	0,0%
23 - 25	18	38,3%
26 - 27	13	27,7%
> 28	16	34,0%
<b>Total</b>	<b>47</b>	<b>100%</b>
NA	0	



##### How many courses included in your study program did you attend regularly?

Answers	a.v.	%
A - More than 75%	41	89,1%
B - Between 50 and 75%	5	10,9%
C - Between 25 and 50%	0	0,0%
D - Less than 25%	0	0,0%
<b>Total</b>	<b>46</b>	<b>100%</b>
NA	1	



## Study experience

1) Was the knowledge acquired during the Secondary School adequate to face the Bachelor Program?

Answers	Italian School Career		International School Career		Total	
	a.v.	%	a.v.	%	a.v.	%
A - Definitely YES	16	42,1%	4	44,4%	20	42,6%
B - More YES than NO	16	42,1%	4	44,4%	20	42,6%
C - More NO than YES	2	5,3%	1	11,1%	3	6,4%
D - Definitely NO	4	10,5%	0	0,0%	4	8,5%
<b>Total</b>	<b>38</b>	<b>100%</b>	<b>9</b>	<b>100%</b>	<b>47</b>	<b>100%</b>
NA	0		0		0	

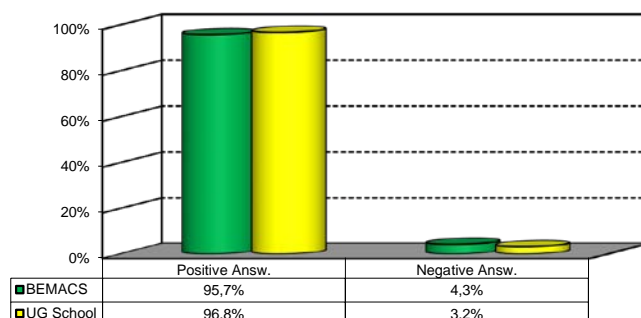
2) if you answered " More NO than YES" or "Definitely NO", indicate the subject or the subjects for which your previous knowledge revealed to be insufficient:

	a.v.	%
ADVANCED MATHEMATICS AND STATISTICS	4	19,0%
MATHEMATICS AND STATISTICS	4	19,0%
ADVANCED MATHEMATICS AND STATISTICS - MODULE 1 (APPLIED MATHEMATICS)	3	14,3%
ADVANCED MATHEMATICS AND STATISTICS - MODULE 2 (ADVANCED STATISTICAL METHODS)	3	14,3%
Altro	7	33,3%
<b>Total</b>	<b>21</b>	<b>100%</b>

3) On the whole, do you appreciate the qualifications acquired attending the Bachelor Program?

Aswers	Italian school Career		Int.nal School Career		Total	
	v.a.	%	v.a.	%	v.a.	%
A - Definitely YES	22	57,9%	6	66,7%	28	59,6%
B - More YES than NO	15	39,5%	2	22,2%	17	36,2%
C - More NO than YES	1	2,6%	1	11,1%	2	4,3%
D - Definitely NO	0	0,0%	0	0,0%	0	0,0%
<b>Total</b>	<b>38</b>	<b>100%</b>	<b>9</b>	<b>100%</b>	<b>47</b>	<b>100%</b>
NA	0		0		0	

Comparison with the overall School data

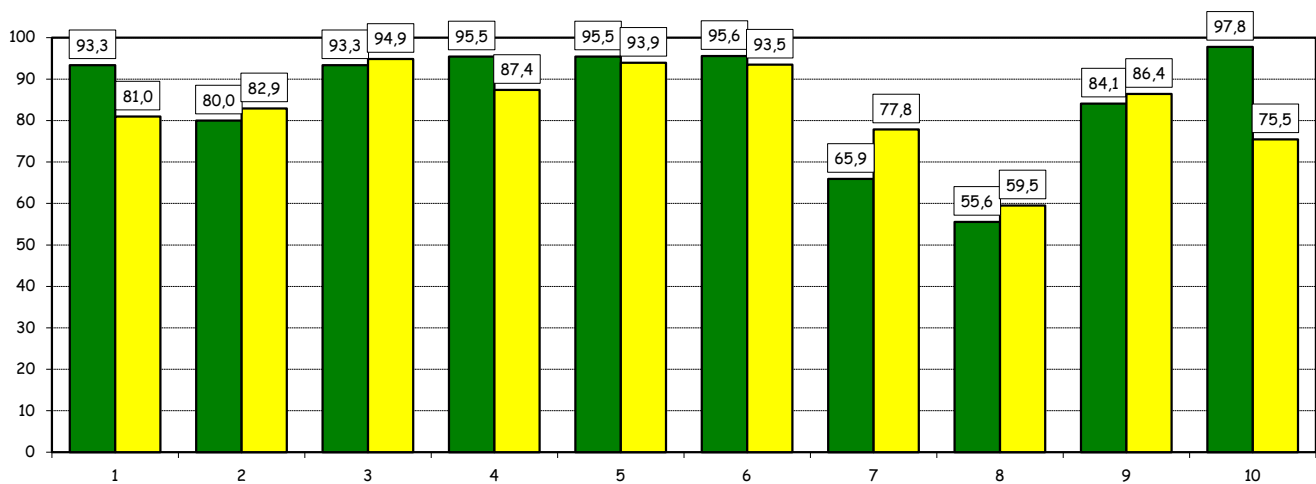


## Study experience

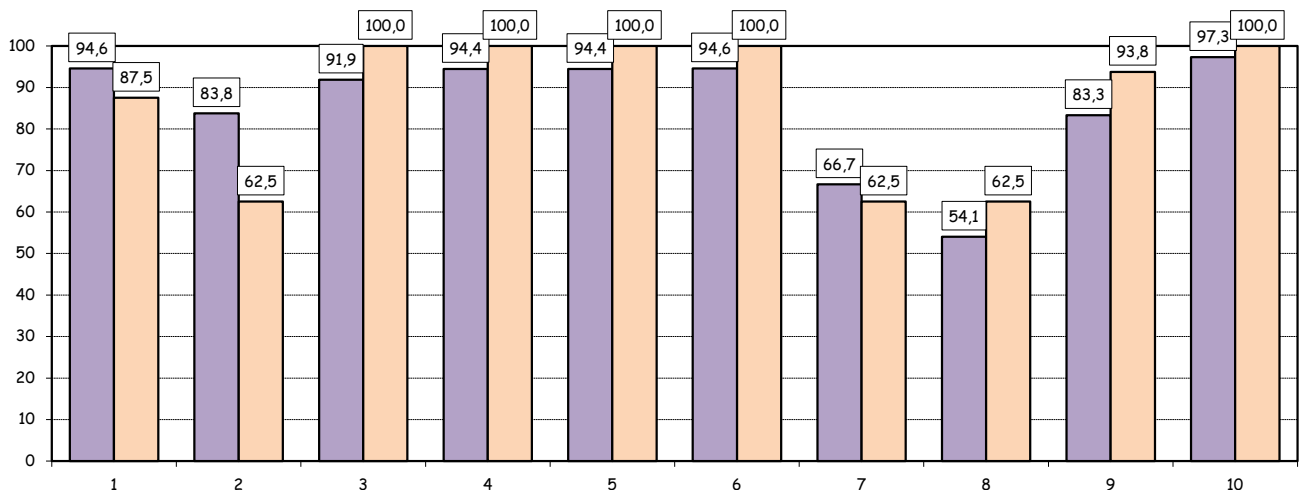
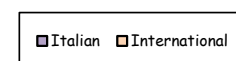
4) Do you think that the preparation received during the Bachelor Program has contributed to the development of the following skills?

Soft Skill	Item	Definitely YES		More YES than NO		More NO than YES		Definitely NO		Total		n.a.
		a.v.	%	a.v.	%	a.v.	%	a.v.	%	a.v.	%	a.v.
1	Ability to work in team	14	31,1	28	62,2	2	4,4	1	2,2	45	100,0	2
2	Interpersonal skills	12	26,7	24	53,3	8	17,8	1	2,2	45	100,0	2
3	Organizational skills	25	55,6	17	37,8	2	4,4	1	2,2	45	100,0	2
4	Critical thinking skills	26	59,1	16	36,4	1	2,3	1	2,3	44	100,0	3
5	Ability to analyse and select information	27	61,4	15	34,1	1	2,3	1	2,3	44	100,0	3
6	Problem-solving ability	28	62,2	15	33,3	1	2,2	1	2,2	45	100,0	2
7	Written communication skills	10	22,7	19	43,2	13	29,5	2	4,5	44	100,0	3
8	Verbal communication skills	6	13,3	19	42,2	14	31,1	6	13,3	45	100,0	2
9	Ability to cope with stress	26	59,1	11	25,0	5	11,4	2	4,5	44	100,0	3
10	Computer Skills	35	77,8	9	20,0	1	2,2	0	0,0	45	100,0	2

Positive answers (%):  
comparison with the overall School data



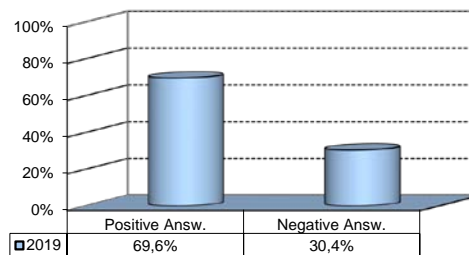
Positive answers (%):  
comparison based on School career options



## Study experience

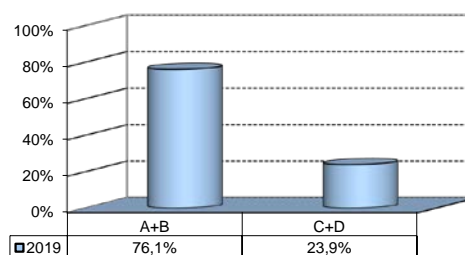
5) Do you think that the courses composing the curriculum were adequately co-ordinated with one another?

	a.v.	%
A - Definitely YES	13	28,3%
B - More YES than NO	19	41,3%
C - More NO than YES	12	26,1%
D - Definitely NO	2	4,3%
<b>Total</b>	<b>46</b>	<b>100%</b>
NA	1	



6) Do you think that the overall study load was commensurate to the length of the program?

	a.v.	%
A - Definitely YES	14	30,4%
B - More YES than NO	21	45,7%
C - More NO than YES	9	19,6%
D - Definitely NO	2	4,3%
<b>Total</b>	<b>46</b>	<b>100%</b>
NA	1	



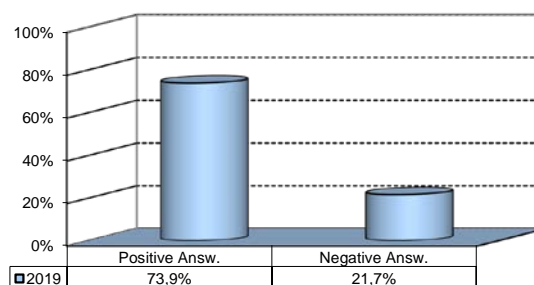
6b) More precisely, you believe that the study load was excessive or insufficient?

	a.v.	% 2019
Excessive	2	100,0%
Insufficient	0	0,0%
<b>Total</b>	<b>2</b>	<b>100%</b>
NA	0	

## Final Report

1) Do you think that supervision and assistance for the preparation of the final report (report on internship, final study papers or other) were adequate?

	a.v.	%
A - Definitely YES	19	41,3%
B - More YES than NO	15	32,6%
C - More NO than YES	8	17,4%
D - Definitely NO	2	4,3%
E - Supervision was not expected	2	4,3%
<b>Total</b>	<b>46</b>	<b>100%</b>
NA	1	

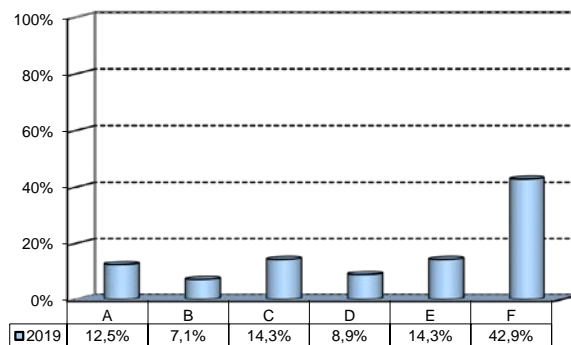


## Extracurricular Activities

1) Which of the following extracurricular activities did you attend during the Bachelor Program?

(multiple answers admitted)

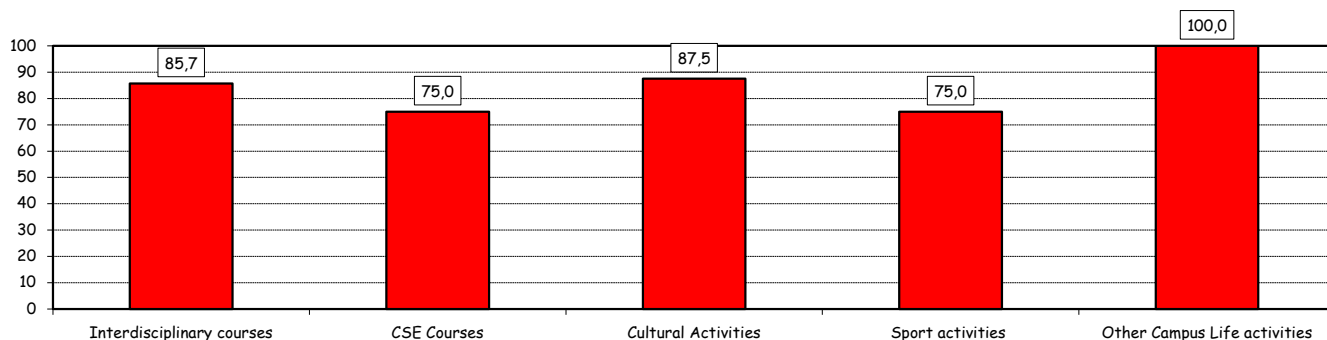
	a.v.	%
A - Interdisciplinary courses ("Sapere a tutto campo")	7	12,5%
B - Counseling and Self-Empowerment courses CSE)	4	7,1%
C - Cultural Activities (visit museums, concerts, theatre and cinema, various issues)	8	14,3%
D - Sport activities	5	8,9%
E - Other Campus Life activities	8	14,3%
F - None	24	42,9%
<b>Total</b>	<b>56</b>	<b>100%</b>
NA	0	



2) Do you think that activities in which you took part contributed to your cultural/educational enrichment?

	Definitely YES		More YES than NO		More NO than YES		Definitely NO		Total		NA
	a.v.	%	a.v.	%	a.v.	%	a.v.	%	a.v.	%	va
A - Interdisciplinary courses (Sapere a tutto campo)	3	42,9	3	42,9	1	14,3	0	0,0	7	100,0	0
B - Counseling and Self-Empowerment courses (CSE)	1	25,0	2	50,0	1	25,0	0	0,0	4	100,0	0
C - Cultural Activities	2	25,0	5	62,5	1	12,5	0	0,0	8	100,0	0
D - Sport activities	0	0,0	3	75,0	1	25,0	0	0,0	4	100,0	1
E - Other Campus Life activities	1	12,5	7	87,5	0	0,0	0	0,0	8	100,0	0

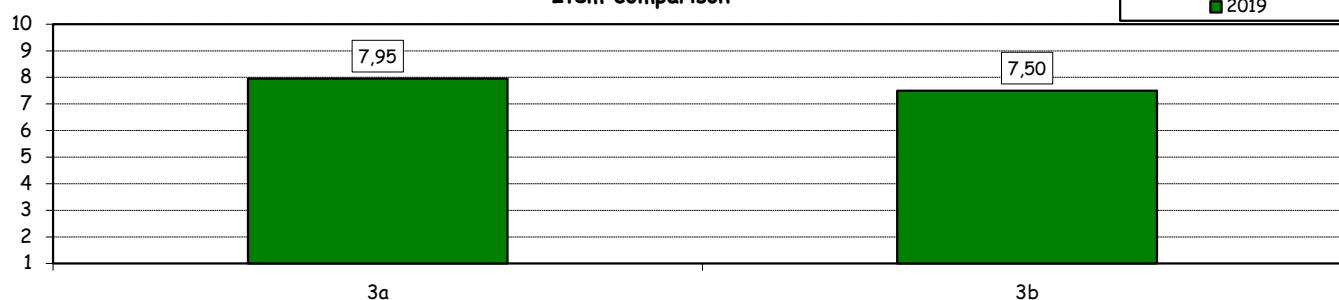
Positive answers (%):



How do you evaluate:

Item	Answers	Negative				Positive				Total		NA
		1-2		3-4-5		6-7-8		9-10		a.v.	%	
		a.v.	%	a.v.	%	a.v.	%	a.v.	%			
3a) The range and interest of programmes offered		0	0,0	1	5,0	12	60,0	7	35,0	20	100,0	3
3b) The support received from Campus Life Office		0	0,0	2	10,0	13	65,0	5	25,0	20	100,0	3

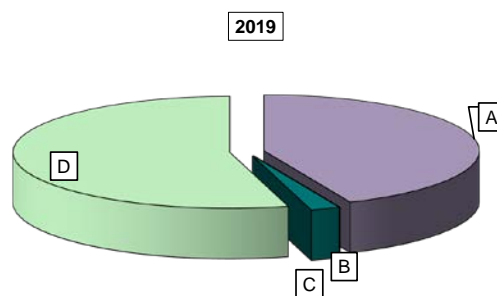
Item comparison



## Experience Of Studying Abroad

### 1) Type of experience:

Answers	%	
	a.v.	2019
A - Exchange	20	43,5%
B - Campus Abroad	0	0,0%
C - Double Degree	0	0,0%
D - Free-Mover	1	2,2%
E - None	25	54,3%
<b>Total</b>	<b>46</b>	<b>100%</b>
NA	1	

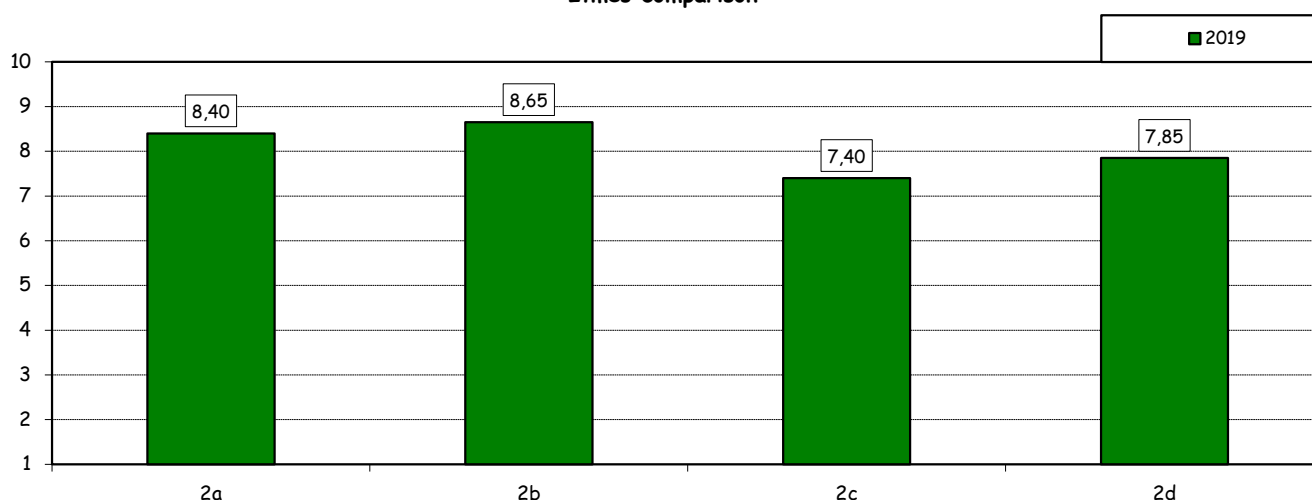


### How do you evaluate:

(only A, B or C answers to item no.1)

Item	Answers	Negative				Positive				Total		N.A.
		1-2		3-4-5		6-7-8		9-10		a.v.	%	a.v.
		a.v.	%	a.v.	%	a.v.	%	a.v.	%	a.v.	%	a.v.
2a) The quality and completeness of information given through: "International Week", e-mails, brochures, International Relations Service web page.		0	0,0	1	5,0	7	35,0	12	60,0	20	100,0	0
2b) The range and interest of programmes offered.		1	5,0	0	0,0	6	30,0	13	65,0	20	100,0	0
2c) The convenience of the study abroad desk's opening hours.		1	5,0	2	10,0	10	50,0	7	35,0	20	100,0	0
2d) The support received from Bocconi.		0	0,0	2	10,0	10	50,0	8	40,0	20	100,0	0

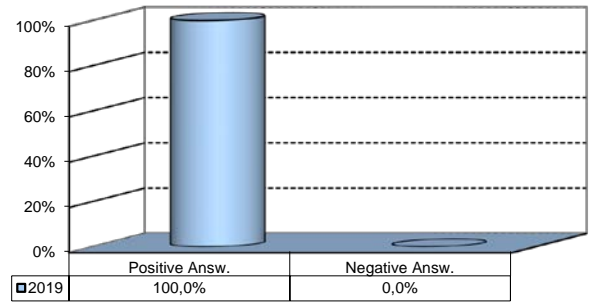
### Items comparison



## Experience Of Studying Abroad

3) Do you positively evaluate this experience?

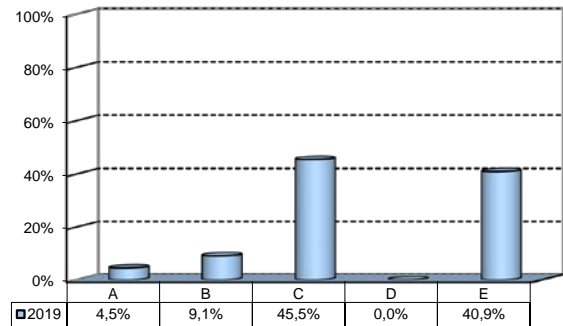
Answers	a. v.	%
A - Definitely YES	14	66,7%
B - More YES than NO	7	33,3%
C - More NO than YES	0	0,0%
D - Definitely NO	0	0,0%
<b>Total</b>	<b>21</b>	<b>100%</b>
NA	0	



(In case of answer "D" to item no.1)

4) Please, indicate why you did not attend a period of study abroad (mark all relevant reasons):

Answers	a. v.	%
A- Lack of interest in this kind of experience	1	4,5%
B- Absence of the requirements needed for participation in the program selected	2	9,1%
C- Rejection of the application	10	45,5%
D- Lack of time during the period of study	0	0,0%
E- Other (personal, family, organizational reasons, etc.)	9	40,9%
<b>Total</b>	<b>22</b>	<b>100%</b>
NA	3	

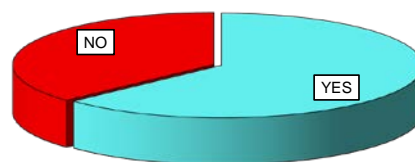




## Internship Activities

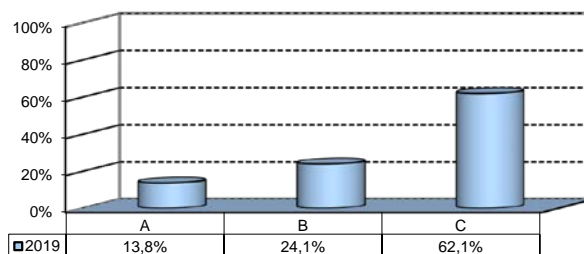
### 1) Did you attend an internship experience?

	a.v.	2019
YES	29	63,0%
NO	17	37,0%
<b>Total</b>	<b>46</b>	<b>100%</b>
NA	1	



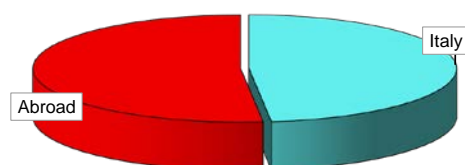
### 2) How did you access the internship?

	a.v.	%
A - Through Bocconi University's Career Service	4	13,8%
B - Through the program faculty members of the Study Program	7	24,1%
C - Autonomously	18	62,1%
<b>Total</b>	<b>29</b>	<b>100%</b>
NA	0	



### 3) Where did you do the internship recognised by the Bachelor Program?

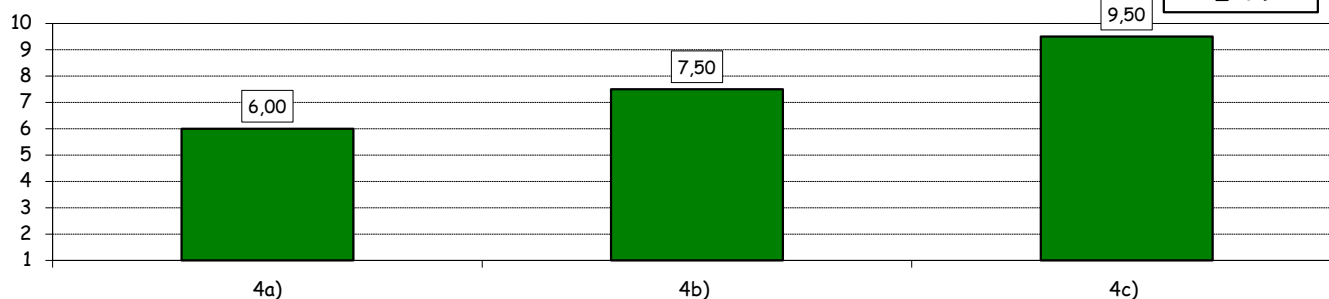
	a.v.	2019
Italy	14	48,3%
Abroad	15	51,7%
<b>Total</b>	<b>29</b>	<b>100%</b>
NA	0	



### How do you evaluate:

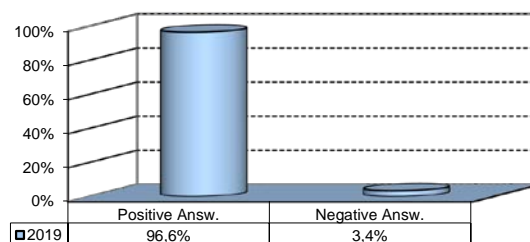
Item	Answers	Negative				Positive				Total	N.A.	
		1-2		3-4-5		6-7-8		9-10				
		a.v.	%	a.v.	%	a.v.	%	a.v.	%			
4a) The convenience of the internship front desk's opening hours.		1	25,0	1	25,0	0	0,0	2	50,0	4	100,0	0
4b) The numerosity and the variety of opportunities offered		0	0,0	0	0,0	4	100,0	0	0,0	4	100,0	0
4c) The support you received from Bocconi.		0	0,0	0	0,0	0	0,0	2	100,0	2	100,0	2

### Items comparison



### 5) Do you positively evaluate this experience?

	a.v.	%
A - Definitely YES	23	79,3%
B - More YES than NO	5	17,2%
C - More NO than YES	0	0,0%
D - Definitely NO	1	3,4%
<b>Total</b>	<b>29</b>	<b>100%</b>
NA	0	



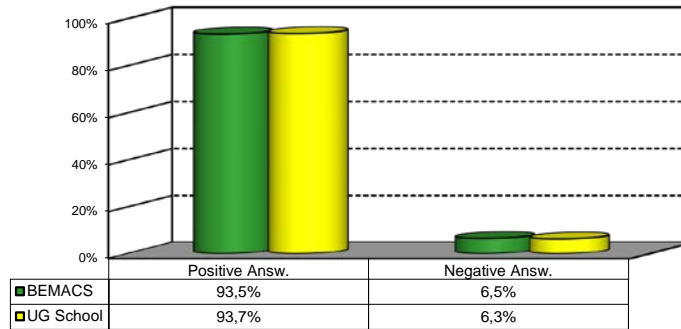
\*JobGate, Internship Programs, Companies' meetings and presentations, Bocconi&Jobs, Placement Library's services, Curricular Internship Special, websites reported in the section 'Lavoro.net'

## General satisfaction and short-term plans

### 1) Are you overall satisfied with the Bachelor Program?

Answers	Italian School career		Int.nal School Career		Total	
	a.v.	%	a.v.	%	a.v.	%
A - Definitely YES	18	48,6%	5	55,6%	23	50,0%
B - More YES than NO	16	43,2%	4	44,4%	20	43,5%
C - More NO than YES	3	8,1%	0	0,0%	3	6,5%
D - Definitely NO	0	0,0%	0	0,0%	0	0,0%
<b>Total</b>	<b>37</b>	<b>100%</b>	<b>9</b>	<b>100%</b>	<b>46</b>	<b>100%</b>
NA	1		0		1	

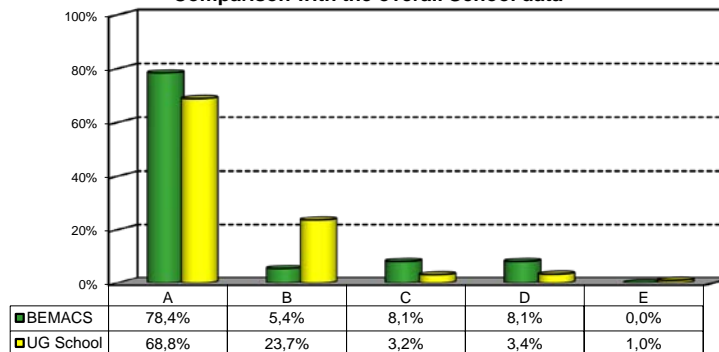
Comparison with the overall School data



### 2a) If you could go back in time, would you enroll in the University again?

Answers	Italian School career		Int.nal School Career		Total	
	a.v.	%	a.v.	%	a.v.	%
A - YES, in the same Bachelor Program at this University	29	78,4%	7	77,8%	36	78,3%
B - YES, in another Program at this University	2	5,4%	0	0,0%	2	4,3%
C - YES, in the same Program but at another University	3	8,1%	0	0,0%	3	6,5%
D - YES, in another Program at another University	3	8,1%	1	11,1%	4	8,7%
E - NO, I would not enrol in any University program	0	0,0%	1	11,1%	1	2,2%
<b>Total</b>	<b>37</b>	<b>100%</b>	<b>9</b>	<b>100%</b>	<b>46</b>	<b>100%</b>
NA	1		0		1	

Comparison with the overall School data



## General satisfaction and short-term plans

(In case of answer "B" to item no.2a)

**2b) Which Bachelor Program would you enroll at this University?**

<b>CdL</b>	<b>v.a.</b>	<b>%</b>
BEMACS	0	0,0%
BIEF	0	0,0%
BIEM	2	100,0%
BIG	0	0,0%
CLEACC	0	0,0%
CLEAM	0	0,0%
CLEF	0	0,0%
CLES	0	0,0%
CLMG	0	0,0%
WBB	0	0,0%
<b>Total</b>	<b>2</b>	<b>100%</b>

(In case of answer "C", "D" or "E" to item no.2a)

**2c) Why would you make a different choice?**

<b>Answers</b>	<b>Italian School career</b>		<b>Int.nal School Career</b>		<b>Total 2019</b>	
	<b>v.a.</b>	<b>%</b>	<b>v.a.</b>	<b>%</b>	<b>v.a.</b>	<b>%</b>
A - My interest has changed during this time / I discovered that I have different attitudes	1	16,7%	1	50,0%	2	25,0%
B - The Bachelor program did not mirror my expectations	3	50,0%	0	0,0%	3	37,5%
C- I have not been admitted to the Bachelor Program selected as first-choice.	0	0,0%	0	0,0%	0	0,0%
D- The campus and its facilities and services were not up to my expectations	0	0,0%	0	0,0%	0	0,0%
E- I would have preferred to attend the same Bachelor Program but taught in English.	0	0,0%	0	0,0%	0	0,0%
F - Other reasons	2	33,3%	1	50,0%	3	37,5%
<b>Total</b>	<b>6</b>	<b>100%</b>	<b>2</b>	<b>100%</b>	<b>8</b>	<b>100%</b>
NA	0		0		0	

**F- Other reasons:**

Disorganizzazione dei corsi. Corsi come stats 2 di una difficoltà enorme e con crediti bassissimi.  
 I do not feel like I have achieved enough practical skills for the jobs in the economics market (such as excel) but more theoretical concepts.  
 moreover, I did not find an easy access to the job application through bocconi contacts.  
 Sinceramente, visto che ho seguito un corso nuovo per la prima volta, non ripeterei l'esperienza per via della disorganizzazione riguardo alcuni corsi. Inoltre, avrei preferito fare meno materie e andare più nello specifico.

## General satisfaction and short-term plans

### 3) In the near future do you intend:

	Italian School career		Int.nal School Career		Total 2019	
	a.v.	%	a.v.	%	a.v.	%
A- To go on with university studies at Bocconi (Master of Science, one-year Master of Science)	12	34,3%	1	11,1%	13	29,5%
B-To go on with university studies at another Italian University	2	5,7%	0	0,0%	2	4,5%
C- To go on with university studies abroad	15	42,9%	5	55,6%	20	45,5%
D - To immediately look for a job	1	2,9%	2	22,2%	3	6,8%
E - To accept a job which has already been proposed to you	5	14,3%	1	11,1%	6	13,6%
F - To continue to do the job you began during this degree program	0	0,0%	0	0,0%	0	0,0%
<b>Total</b>	<b>35</b>	<b>100%</b>	<b>9</b>	<b>100%</b>	<b>44</b>	<b>100%</b>
NA	3		0		3	

### 4) If you intend to go on with university studies at other University (in Italy or abroad), what are the reasons of this choice? (multiple answers admitted)

	Italian School career		Int.nal School Career		Total 2019	
	a.v.	%	a.v.	%	a.v.	%
A - I would like to attend a more prestigious university	4	13,3%	2	20,0%	6	15,0%
B - I would like to build a strong international curriculum	12	40,0%	4	40,0%	16	40,0%
C- I can not bear the cost of studies (tuition fees and cost of living)	0	0,0%	0	0,0%	0	0,0%
D - I can not bear the cost of studies (tuition fees and cost of living)	3	10,0%	1	10,0%	4	10,0%
E- The administrative services are not sufficiently efficient	0	0,0%	0	0,0%	0	0,0%
F - I think that the contents of Bocconi's MSc programs do not differ much from those of undergraduate programs	5	16,7%	3	30,0%	8	20,0%
G - Other reasons	6	20,0%	0	0,0%	6	15,0%
<b>Total</b>	<b>30</b>	<b>100%</b>	<b>10</b>	<b>100%</b>	<b>40</b>	<b>100%</b>
NA	0		0		0	

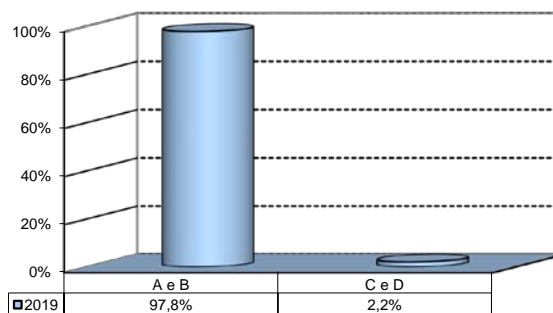
#### G - Other reasons:

Alla ricerca di un master di un anno, non una magistrale da due
C'ho la ragazza "estera"
corso di studi nell'universita estera pi adatto ad i miei interessi
Il corso che andrò a fare non c'è in Bocconi. Inoltre, da quanto mi hanno detto, in magistrale in Bocconi si tende ad avere un'approccio molto teorico.
L'Universta Bocconi non offre una specializzazione in Football Management, che è quello che stavo cercando
Too little practical teaching. Want something with more exercises

## Infrastructure: Classrooms, Library And Facilities

1) What is your opinion about the classrooms where lessons and other teaching activities have been carried out?\*

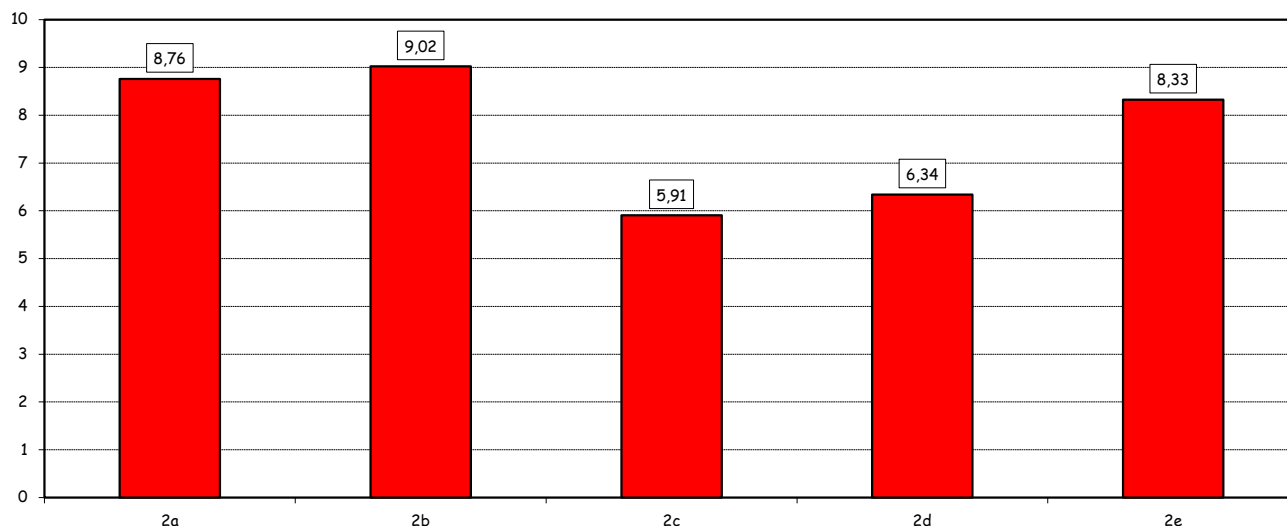
Answers	a.v.	%
A - Always or nearly always adequate	33	71,7%
B - Often adequate	12	26,1%
C - Rarely adequate	0	0,0%
D - Never adequate	1	2,2%
E - I did not use them	0	0,0%
<b>Total</b>	<b>46</b>	<b>100%</b>
NA	1	



2) How do you evaluate:

Item	Answers	Negative				Positive				Total	NA	N.R.	
		1-2		3-4-5		6-7-8		9-10					
		a.v.	%	a.v.	%	a.v.	%	a.v.	%				
a) The functionality of the audio and multi-media systems (e.g. teacher's computer, projectors, video players) installed in the classrooms		0	0,0	1	2,2	16	34,8	29	63,0	46	100,0		1
b) The cleanliness of classrooms and of other common areas of the University (corridors, halls, study rooms)		0	0,0	0	0,0	13	28,3	33	71,7	46	100,0		1
c) The adequacy (in number) of the areas/seats reserved to individual study in the University Library		7	16,3	11	25,6	16	37,2	9	20,9	43	100,0	1	3
d) The adequacy (in number) of the areas/seats reserved to individual study in the other University buildings		6	13,6	9	20,5	19	43,2	10	22,7	44	100,0	2	1
e) The clarity and adequacy of the internal sign system		0	0,0	4	8,7	19	41,3	23	50,0	46	100,0		1

Items comparison

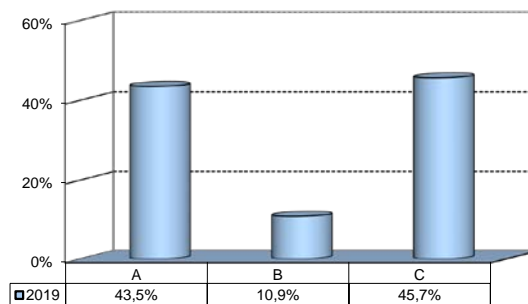


(\*): the percentage shown on the graphs is calculated by excluding the responses of those who declare that they have not used the service.

## Infrastructure: Classrooms, Library And Facilities

3) What is your overall opinion on PC Laboratories and IT facilities provided by the University?

Answers	a.v.	%
A- Adequate in number	20	43,5%
B- Inadequate in number	5	10,9%
C- Never used	21	45,7%
<b>Total</b>	<b>46</b>	<b>100%</b>
NA	1	

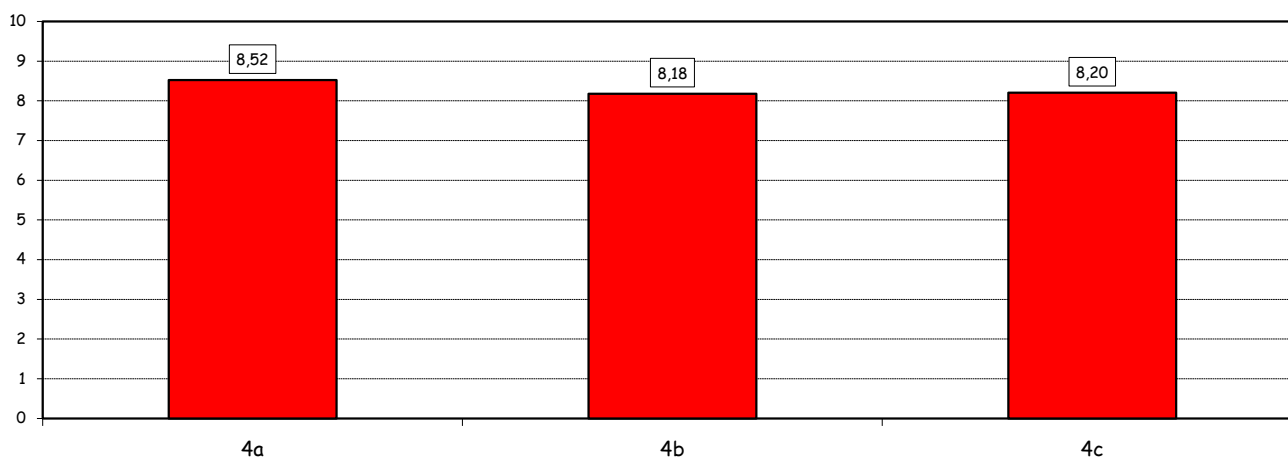


4) How do you evaluate:

Item	Answers	Negative				Positive				Total		NA
		1-2		3-4-5		6-7-8		9-10		a.v.	%	
		a.v.	%	a.v.	%	a.v.	%	a.v.	%			
a) The availability of technical staff supporting students.^		0	0,0	1	4,3	9	39,1	13	56,5	23	100,0	2
b) The convenience of the PC laboratories' opening hours.^		0	0,0	2	9,1	10	45,5	10	45,5	22	100,0	3
c) The level of accessibility and use of University's I.T. services (Internet access points, "Punto Blu", Virtual "Punto Blu", wireless connection).		0	0,0	3	6,8	22	50,0	19	43,2	44	100,0	3

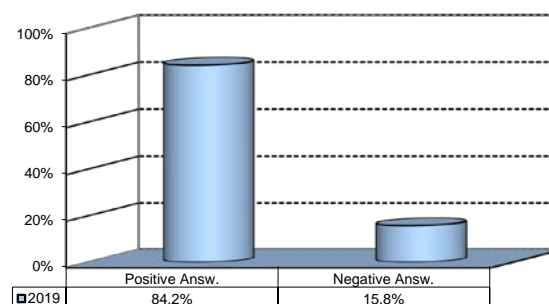
Items comparison

■ 2019



5) What is your overall opinion on the Library's services as support for individual study?\*

Answers	a.v.	%
A - Very Positive	13	28,3%
B - Quite positive	19	41,3%
C - Quite negative	4	8,7%
D - Very Negative	2	4,3%
E - Never used	8	17,4%
<b>Total</b>	<b>46</b>	<b>100%</b>
NA	1	



(\*): Only in case of answer "A" or "B" to item no.3

(\*): the percentage shown on the graphs is calculated by excluding the responses of those who declare that they have not used the service.