

VALUTAZIONE ESPERIENZA UNIVERSITARIA

CORSO DI LAUREA IN
**INTERNATIONAL POLITICS AND
GOVERNMENT**
A.S.2019



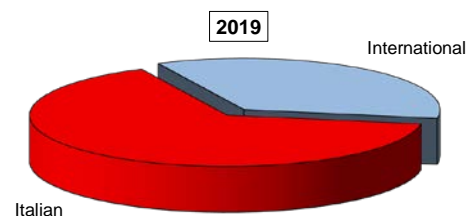
EVALUATION OF STUDENT EXPERIENCE

Bachelor of Science in International Politics and Government

General information

School Career

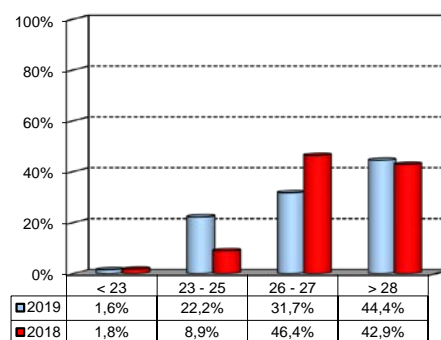
Answers	a.v.	%	%
		2019	2018
Italian	41	65,1%	78,6%
International	22	34,9%	21,4%
Total	63	100%	100%
NA	0		



Average mark of the exams passed:

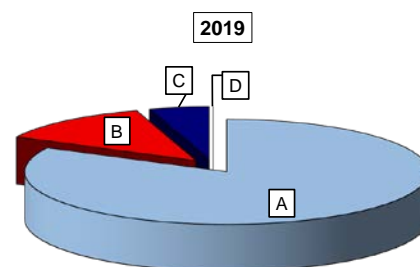
(approximate average expressed in 30/30)

Answers	a.v.	%
< 23	1	1,6%
23 - 25	14	22,2%
26 - 27	20	31,7%
> 28	28	44,4%
Total	63	100%
NA	0	



How many courses included in your study program did you attend regularly?

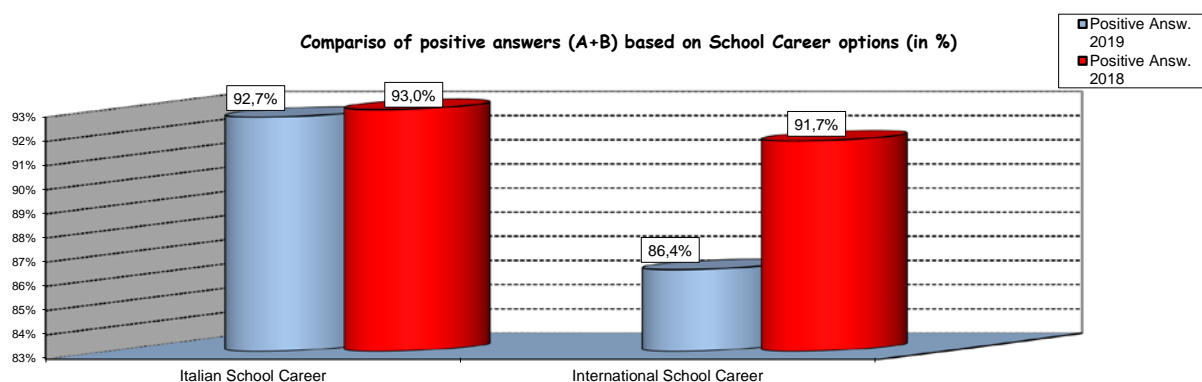
Answers	a.v.	%	%
		2019	2018
A - More than 75%	52	82,5%	87,5%
B - Between 50 and 75%	8	12,7%	10,7%
C - Between 25 and 50%	3	4,8%	1,8%
D - Less than 25%	0	0,0%	0,0%
Total	63	100%	100%
NA	0		



Study experience

1) Was the knowledge acquired during the Secondary School adequate to face the Bachelor Program?

Answers	Italian School Career		International School Career		Total	
	a.v.	%	a.v.	%	a.v.	%
A - Definitely YES	23	56,1%	8	36,4%	31	49,2%
B - More YES than NO	15	36,6%	11	50,0%	26	41,3%
C - More NO than YES	3	7,3%	2	9,1%	5	7,9%
D - Definitely NO	0	0,0%	1	4,5%	1	1,6%
Total	41	100%	22	100%	63	100%
NA	0		0		0	

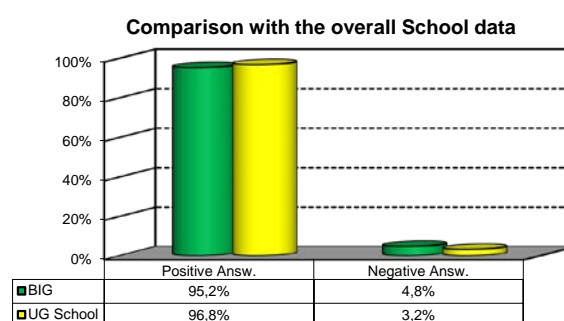
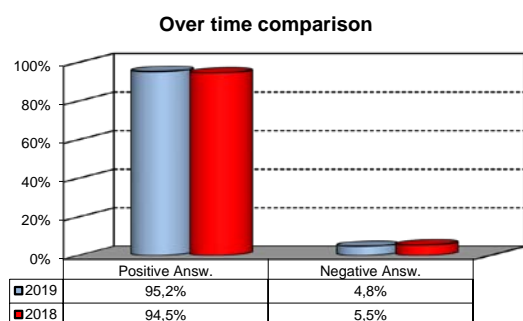


2) if you answered " More NO than YES" or "Definitely NO", indicate the subject or the subjects for which your previous knowledge revealed to be insufficient:

	a.v.	%
QUANTITATIVE METHODS FOR SOCIAL SCIENCES	3	18,8%
POLICY EVALUATION	2	12,5%
INTERNATIONAL RELATIONS	2	12,5%
POLITICAL ECONOMICS	2	12,5%
Altro	7	43,8%
Total	16	100%

3) On the whole, do you appreciate the qualifications acquired attending the Bachelor Program?

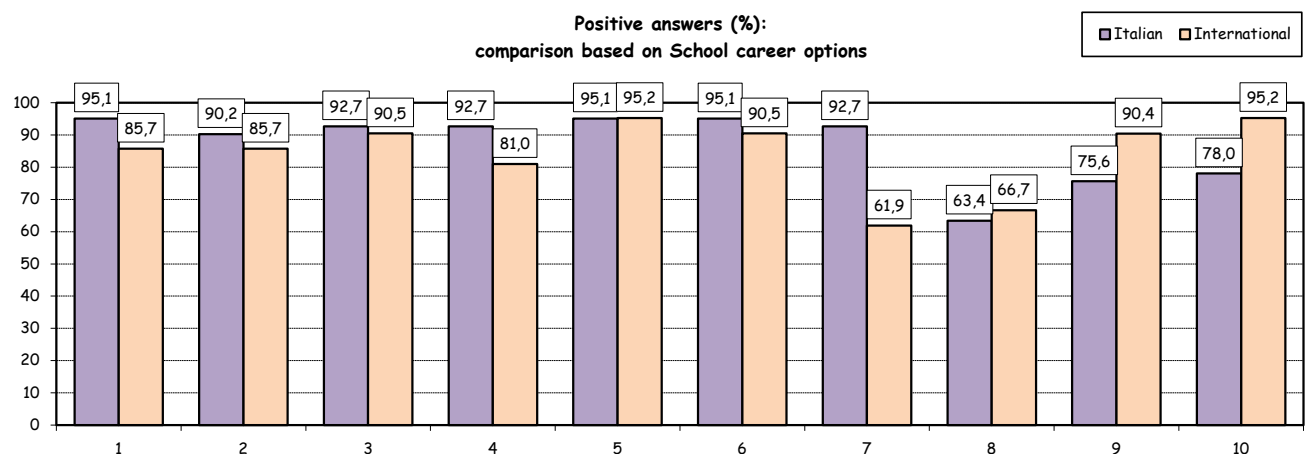
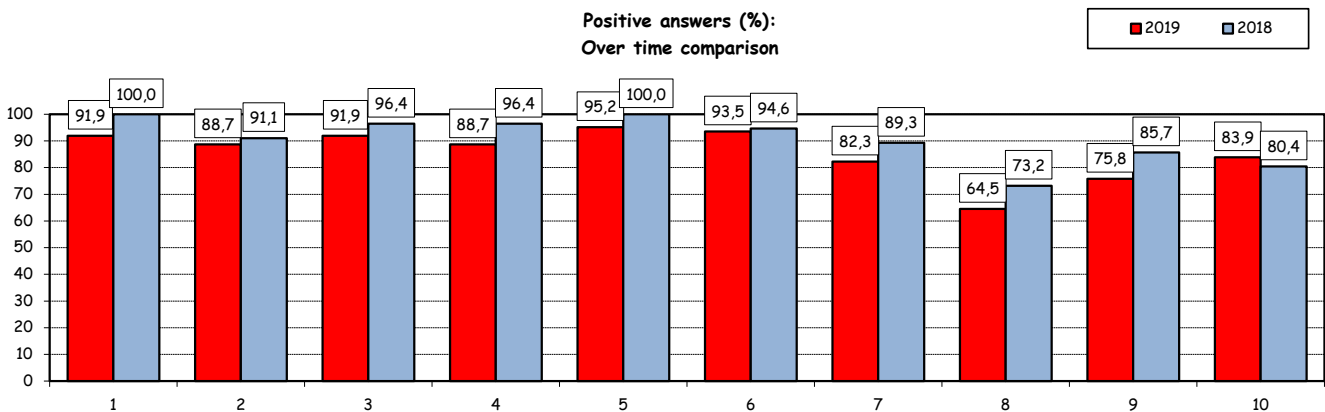
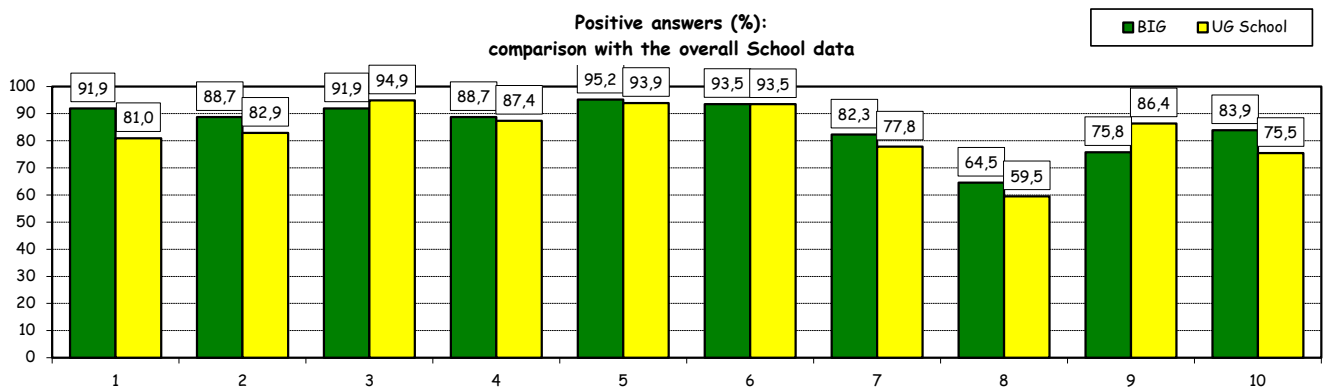
Answers	Italian school Career		Int.nal School Career		Total	
	v.a.	%	v.a.	%	v.a.	%
A - Definitely YES	24	58,5%	11	50,0%	35	55,6%
B - More YES than NO	15	36,6%	10	45,5%	25	39,7%
C - More NO than YES	2	4,9%	1	4,5%	3	4,8%
D - Definitely NO	0	0,0%	0	0,0%	0	0,0%
Total	41	100%	22	100%	63	100%
NA	0		0		0	



Study experience

4) Do you think that the preparation received during the Bachelor Program has contributed to the development of the following skills?

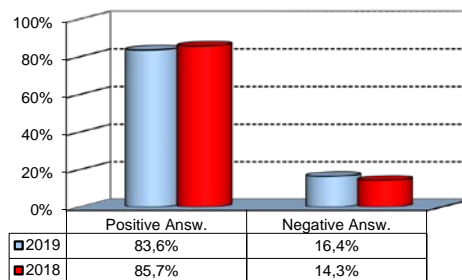
Soft Skill	Item	Definitely YES		More YES than NO		More NO than YES		Definitely NO		Total		n.a.
		a.v.	%	a.v.	%	a.v.	%	a.v.	%	a.v.	%	a.v.
1	Ability to work in team	39	62,9	18	29,0	4	6,5	1	1,6	62	100,0	1
2	Interpersonal skills	29	46,8	26	41,9	4	6,5	3	4,8	62	100,0	1
3	Organizational skills	33	53,2	24	38,7	5	8,1	0	0,0	62	100,0	1
4	Critical thinking skills	34	54,8	21	33,9	6	9,7	1	1,6	62	100,0	1
5	Ability to analyse and select information	42	67,7	17	27,4	3	4,8	0	0,0	62	100,0	1
6	Problem-solving ability	32	51,6	26	41,9	4	6,5	0	0,0	62	100,0	1
7	Written communication skills	27	43,5	24	38,7	7	11,3	4	6,5	62	100,0	1
8	Verbal communication skills	14	22,6	26	41,9	16	25,8	6	9,7	62	100,0	1
9	Ability to cope with stress	21	33,9	26	41,9	12	19,4	3	4,8	62	100,0	1
10	Computer Skills	19	30,6	33	53,2	10	16,1	0	0,0	62	100,0	1



Study experience

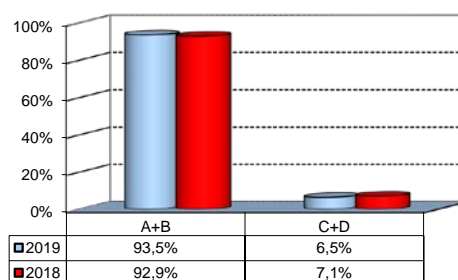
5) Do you think that the courses composing the curriculum were adequately co-ordinated with one another?

	a. v.	%
A - Definitely YES	11	18,0%
B - More YES than NO	40	65,6%
C - More NO than YES	10	16,4%
D - Definitely NO	0	0,0%
Total	61	100%
NA	2	



6) Do you think that the overall study load was commensurate to the length of the program?

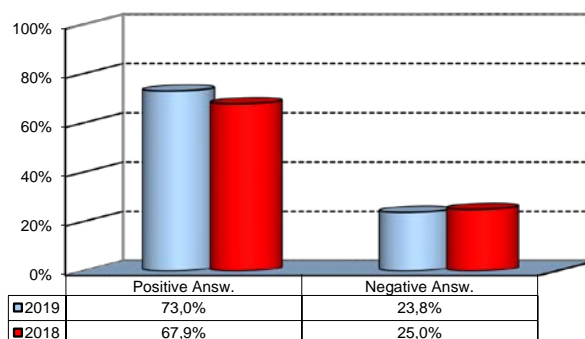
	a. v.	%
A - Definitely YES	24	38,7%
B - More YES than NO	34	54,8%
C - More NO than YES	4	6,5%
D - Definitely NO	0	0,0%
Total	62	100%
NA	1	



Final Report

1) Do you think that supervision and assistance for the preparation of the final report (report on internship, final study papers or other) were adequate?

	a. v.	%
A - Definitely YES	18	28,6%
B - More YES than NO	28	44,4%
C - More NO than YES	9	14,3%
D - Definitely NO	6	9,5%
E - Supervision was not expected	2	3,2%
Total	63	100%
NA	0	

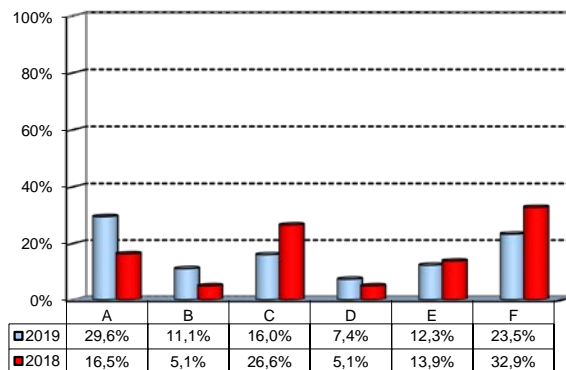


Extracurricular Activities

1) Which of the following extracurricular activities did you attend during the Bachelor Program?

(multiple answers admitted)

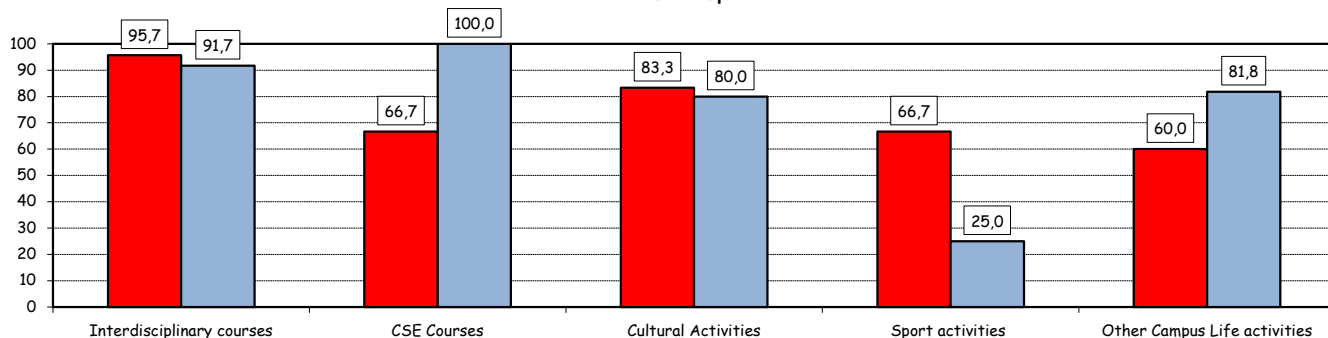
	a.v.	%
A - Interdisciplinary courses ("Sapere a tutto campo")	24	29,6%
B - Counseling and Self-Empowerment courses CSE)	9	11,1%
C - Cultural Activities (visit museums, concerts, theatre and cinema, various issues)	13	16,0%
D - Sport activities	6	7,4%
E - Other Campus Life activities	10	12,3%
F - None	19	23,5%
Total	81	100%
NA	0	



2) Do you think that activities in which you took part contributed to your cultural/educational enrichment?

	Definitely YES		More YES than NO		More NO than YES		Definitely NO		Total		NA
	a.v.	%	a.v.	%	a.v.	%	a.v.	%	a.v.	%	va
A - Interdisciplinary courses (Sapere a tutto campo)	11	47,8	11	47,8	1	4,3	0	0,0	23	100,0	1
B - Counseling and Self-Empowerment courses (CSE)	5	55,6	1	11,1	2	22,2	1	11,1	9	100,0	0
C - Cultural Activities	4	33,3	6	50,0	2	16,7	0	0,0	12	100,0	1
D - Sport activities	0	0,0	4	66,7	1	16,7	1	16,7	6	100,0	0
E - Other Campus Life activities	3	30,0	3	30,0	3	30,0	1	10,0	10	100,0	0

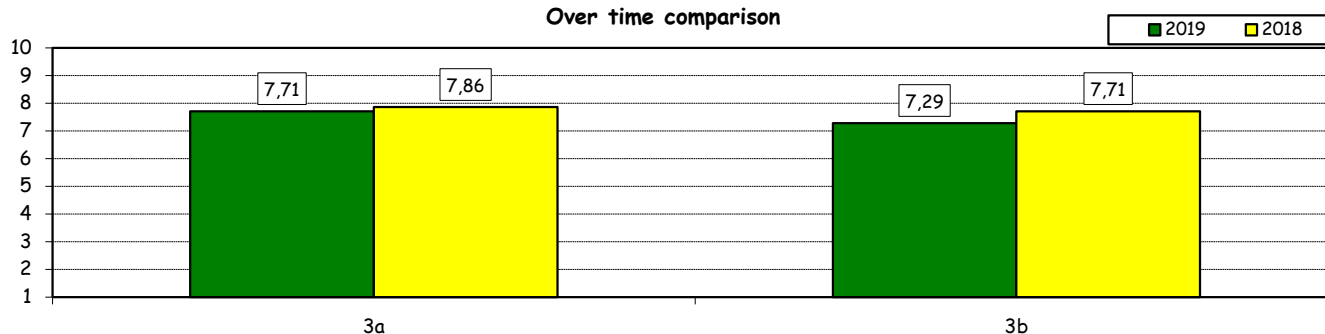
Positive answers (%):
Over time comparison



How do you evaluate:

Item	Answers	Negative						Positive		Total		NA
		1-2		3-4-5		6-7-8		9-10		a.v.	%	
		a.v.	%	a.v.	%	a.v.	%	a.v.	%			
3a) The range and interest of programmes offered		1	2,9	2	5,7	23	65,7	9	25,7	35	100,0	9
3b) The support received from Campus Life Office		1	2,9	6	17,1	18	51,4	10	28,6	35	100,0	9

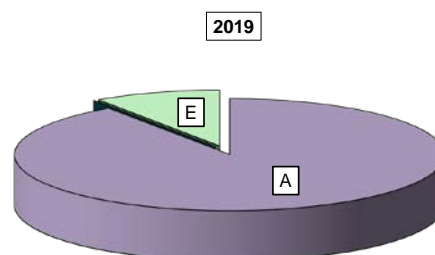
Over time comparison



Experience Of Studying Abroad

1) Type of experience:

Answers	a.v.	%	
		2019	2018
A - Exchange	57	90,5%	92,9%
B - Campus Abroad	0	0,0%	1,8%
C - Double Degree	0	0,0%	0,0%
D - Free-Mover	0	0,0%	0,0%
E - None	6	9,5%	5,4%
Total	63	100%	100%
NA	0		

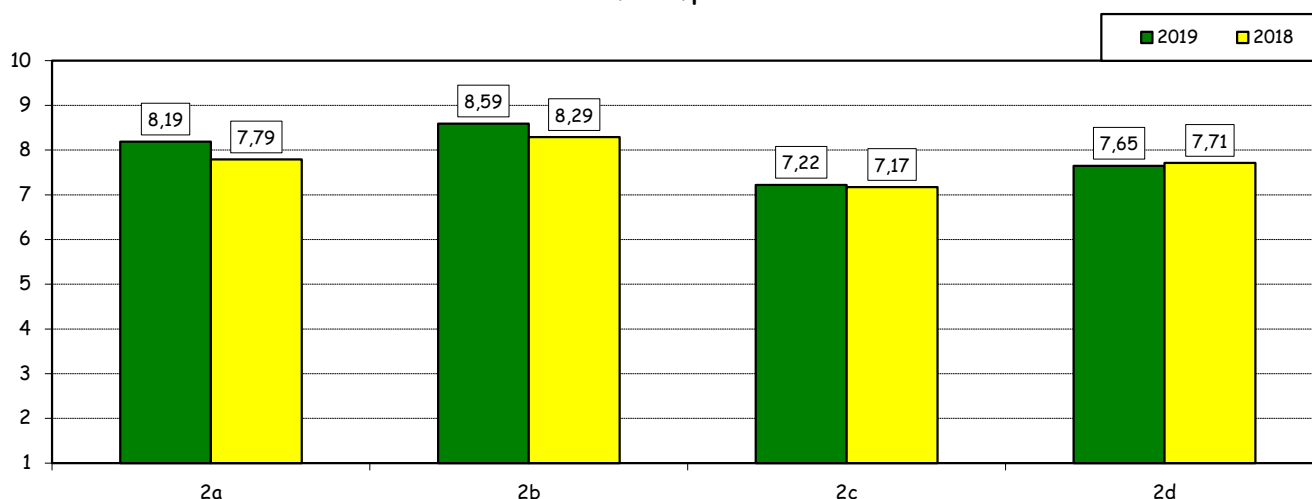


How do you evaluate:

(only A or B answers to item no.1)

Item	Answers	Negative				Positive				Total		N.A.
		1-2		3-4-5		6-7-8		9-10		a.v.	%	a.v.
		a.v.	%	a.v.	%	a.v.	%	a.v.	%	a.v.	%	a.v.
2a) The quality and completeness of information given through: "International Week", e-mails, brochures, International Relations Service web page.		0	0,0	4	7,5	25	47,2	24	45,3	53	100,0	4
2b) The range and interest of programmes offered.		0	0,0	3	5,6	17	31,5	34	63,0	54	100,0	3
2c) The convenience of the study abroad desk's opening hours.		2	3,7	11	20,4	25	46,3	16	29,6	54	100,0	3
2d) The support received from Bocconi.		5	9,3	3	5,6	22	40,7	24	44,4	54	100,0	3

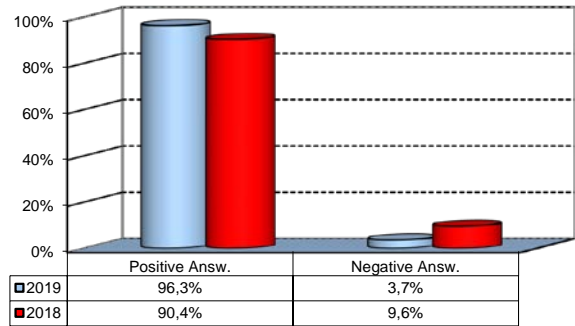
Over time comparison



Experience Of Studying Abroad

3) Do you positively evaluate this experience?

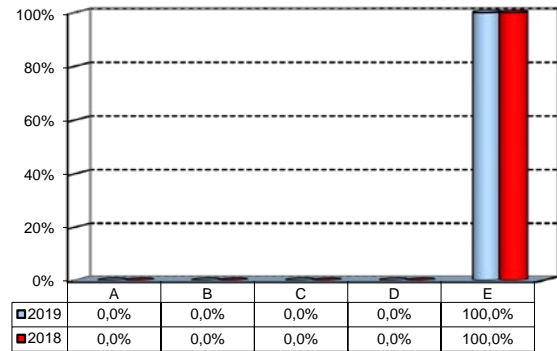
Answers	a. v.	%
A - Definitely YES	36	66,7%
B - More YES than NO	16	29,6%
C - More NO than YES	2	3,7%
D - Definitely NO	0	0,0%
Total	54	100%
NA	3	



(In case of answer "D" to item no.1)

4) Please, indicate why you did not attend a period of study abroad (mark all relevant reasons):

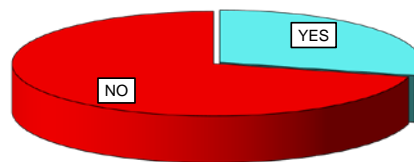
Answers	a. v.	%
A- Lack of interest in this kind of experience	0	0,0%
B- Absence of the requirements needed for participation in the program selected	0	0,0%
C- Rejection of the application	0	0,0%
D- Lack of time during the period of study	0	0,0%
E- Other (personal, family, organizational reasons, etc.)	2	100,0%
Total	2	100%
NA	4	



Internship Activities

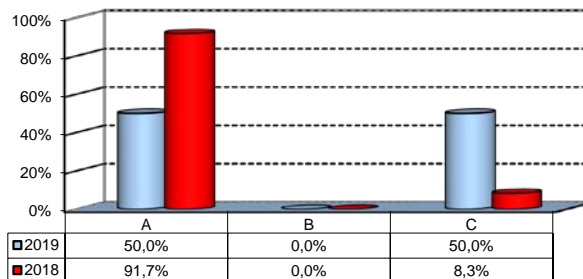
1) Did you attend an internship experience?

	a.v.	2019	2018
YES	18	29,0%	21,4%
NO	44	71,0%	78,6%
Total	62	100%	100%
NA	1		



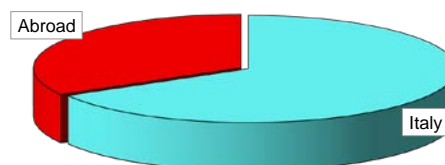
2) How did you access the internship?

	a.v.	%
A - Through Bocconi University's Career Service	9	50,0%
B - Through the program faculty members of the Study Program	0	0,0%
C - Autonomously	9	50,0%
Total	18	100%
NA	0	



3) Where did you do the internship recognised by the Bachelor Program?

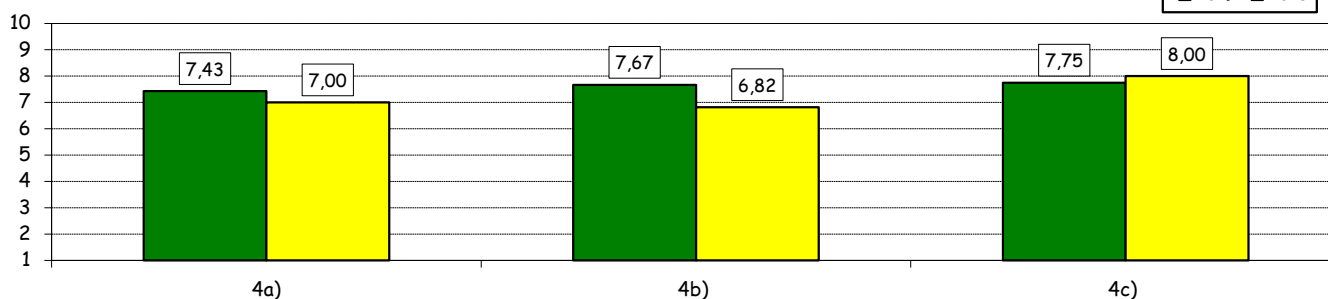
	a.v.	2019	2018
Italy	12	66,7%	0,0%
Abroad	6	33,3%	100,0%
Total	18	100%	100%
NA	0		



How do you evaluate:

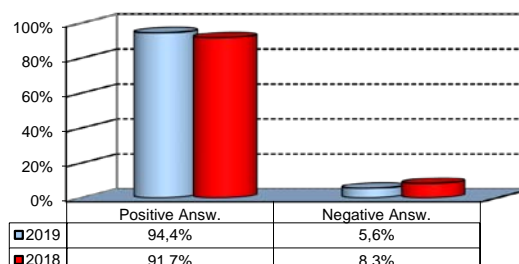
Item	Answers	Negative				Positive				Total	N.A.	
		1-2		3-4-5		6-7-8		9-10				
		a.v.	%	a.v.	%	a.v.	%	a.v.	%			
4a) The convenience of the internship front desk's opening hours.		0	0,0	2	28,6	2	28,6	3	42,9	7	100,0	2
4b) The numerosity and the variety of opportunities offered		0	0,0	1	11,1	6	66,7	2	22,2	9	100,0	0
4c) The support you received from Bocconi.		0	0,0	1	12,5	4	50,0	3	37,5	8	100,0	1

Over time comparison



5) Do you positively evaluate this experience?

	a.v.	%
A - Definitely YES	11	61,1%
B - More YES than NO	6	33,3%
C - More NO than YES	1	5,6%
D - Definitely NO	0	0,0%
Total	18	100%
NA	0	



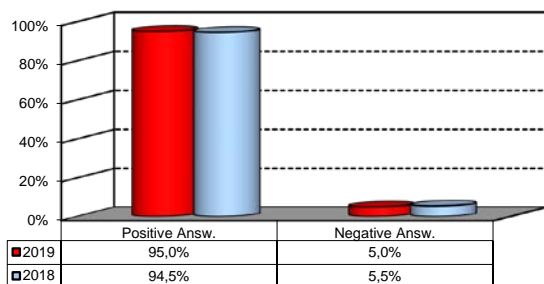
*JobGate, Internship Programs, Companies' meetings and presentations, Bocconi&Jobs, Placement Library's services, Curricular Internship Special, websites reported in the section 'Lavoro.net'

General satisfaction and short-term plans

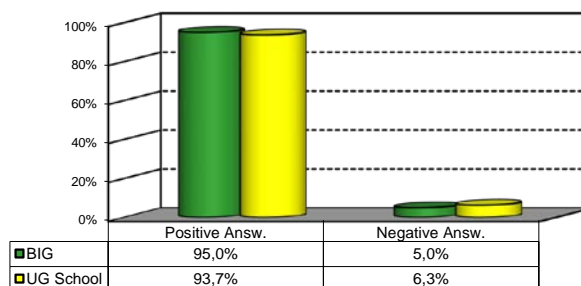
1) Are you overall satisfied with the Bachelor Program?

Answers	Italian School career		Int.nal School Career		Total	
	a.v.	%	a.v.	%	a.v.	%
A - Definitely YES	24	60,0%	12	60,0%	36	60,0%
B - More YES than NO	15	37,5%	6	30,0%	21	35,0%
C - More NO than YES	1	2,5%	2	10,0%	3	5,0%
D - Definitely NO	0	0,0%	0	0,0%	0	0,0%
Total	40	100%	20	100%	60	100%
NA	1		2		3	

Over time comparison



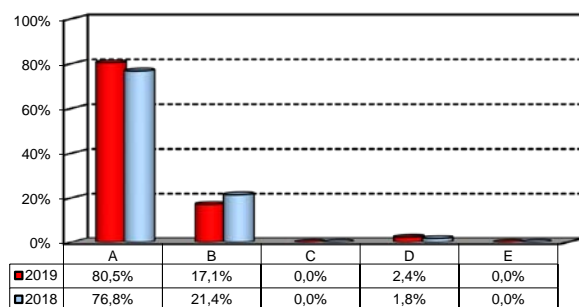
Comparison with the overall School data



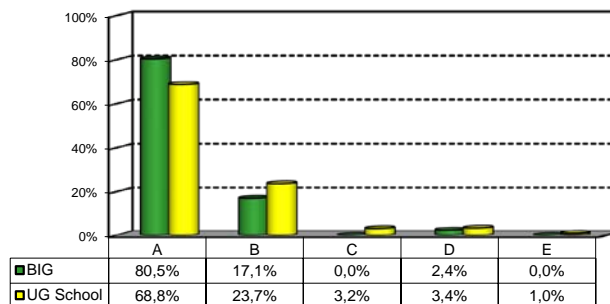
2a) If you could go back in time, would you enroll in the University again?

Answers	Italian School career		Int.nal School Career		Total	
	a.v.	%	a.v.	%	a.v.	%
A - YES, in the same Bachelor Program at this University	33	80,5%	16	80,0%	49	80,3%
B - YES, in another Program at this University	7	17,1%	1	5,0%	8	13,1%
C - YES, in the same Program but at another University	0	0,0%	1	5,0%	1	1,6%
D - YES, in another Program at another University	1	2,4%	1	5,0%	2	3,3%
E - NO, I would not enrol in any University program	0	0,0%	1	5,0%	1	1,6%
Total	41	100%	20	100%	61	100%
NA	0		2		2	

Over time comparison



Comparison with the overall School data



General satisfaction and short-term plans

(In case of answer "B" to item no.2a)

2b) Which Bachelor Program would you enroll at this University?

CdL	v.a.	%
BEMACS	1	12,5%
BIEF	1	12,5%
BIEM	0	0,0%
BIG	0	0,0%
CLEACC	1	12,5%
CLEAM	0	0,0%
CLEF	0	0,0%
CLES	5	62,5%
CLMG	0	0,0%
WBB	0	0,0%
Total	8	100%

(In case of answer "C", "D" or "E" to item no.2a)

2c) Why would you make a different choice?

Answers	Italian School career		Int.nal School Career		Total		2018
	a.v.	%	a.v.	%	2019	%	
A - My interest has changed during this time / I discovered that I have different attitudes	1	100,0%	0	0,0%	1	25,0%	100,0%
B - The Bachelor program did not mirror my expectations	0	0,0%	2	66,7%	2	50,0%	0,0%
C- I have not been admitted to the Bachelor Program selected as first-choice.	0	0,0%	1	33,3%	1	25,0%	0,0%
D- The campus and its facilities and services were not up to my expectations	0	0,0%	0	0,0%	0	0,0%	0,0%
E- I would have preferred to attend the same Bachelor Program but taught in English.	0	0,0%	0	0,0%	0	0,0%	0,0%
F - Other reasons	0	0,0%	0	0,0%	0	0,0%	0,0%
Total	1	100%	3	100%	4	100%	100%
NA	0		0		0		

General satisfaction and short-term plans

3) In the near future do you intend:

	Italian School career		Int.nal School Career		Total		2018 %
	a.v.	%	a.v.	%	2019 a.v.	%	
A- To go on with university studies at Bocconi (Master of Science, one-year Master of Science)	25	73,5%	3	15,8%	28	52,8%	29,5%
B-To go on with university studies at another Italian University	2	5,9%	1	5,3%	3	5,7%	0,0%
C- To go on with university studies abroad	7	20,6%	12	63,2%	19	35,8%	68,2%
D - To immediately look for a job	0	0,0%	0	0,0%	0	0,0%	2,3%
E - To accept a job which has already been proposed to you	0	0,0%	3	15,8%	3	5,7%	0,0%
F - To continue to do the job you began during this degree program	0	0,0%	0	0,0%	0	0,0%	0,0%
Total	34	100%	19	100%	53	100%	100%
NA	7		3		10		

4) If you intend to go on with university studies at other University (in Italy or abroad), what are the reasons of this choice? (multiple answers admitted)

	Italian School career		Int.nal School Career		Total		2018 %
	a.v.	%	a.v.	%	2019 a.v.	%	
A - I would like to attend a more prestigious university	3	18,8%	2	8,3%	5	12,5%	13,2%
B - I would like to build a strong international curriculum	6	37,5%	9	37,5%	15	37,5%	50,9%
C- I can not bear the cost of studies (tuition fees and cost of living)	0	0,0%	1	4,2%	1	2,5%	3,8%
D - I can not bear the cost of studies (tuition fees and cost of living)	2	12,5%	1	4,2%	3	7,5%	1,9%
E- The administrative services are not sufficiently efficient	0	0,0%	1	4,2%	1	2,5%	1,9%
F - I think that the contents of Bocconi's MSc programs do not differ much from those of undergraduate programs	3	18,8%	6	25,0%	9	22,5%	24,5%
G - Other reasons	2	12,5%	4	16,7%	6	15,0%	3,8%
Total	16	100%	24	100%	40	100%	100%
NA	0		0		0		

General satisfaction and short-term plans

G - Other reasons:

because I wanted to do a specific Master in Sustainability and Social Innovation

BIG was perfect, but Bocconi is still too much focused on economics and management and less on political science and public policy, it's clearly a business school first. Moreover, Bocconi suffers from a method of teaching that is still too Italian (face lectures + written exams at the end), while I do prefer to attend a university that will teach me to develop more skills (through papers, projects, etc). Staying in Bocconi would be too limiting after having attended BIG.

Desidero approfondire gli studi in ambito amministrativo italiano, non internazionale.

Ho ricevuto una generosa borsa di studio altrove.

I want to specialize in a topic not covered by Bocconi's MCs programs

I want to study and maybe do research in international relations and security studies, two subjects which are pretty lacklustre in Bocconi.

I wanted to experience a different environment and preferred to have a MSc in Marketing degree in a technical university like Politecnico di Milano

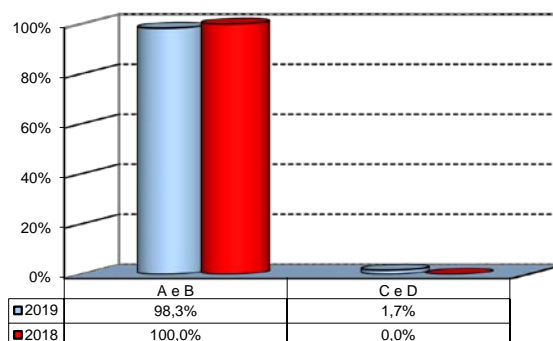
I would like to discover new teaching method

Personal decisions and conditions that have taken me to France

Infrastructure: Classrooms, Library And Facilities

1) What is your opinion about the classrooms where lessons and other teaching activities have been carried out?*

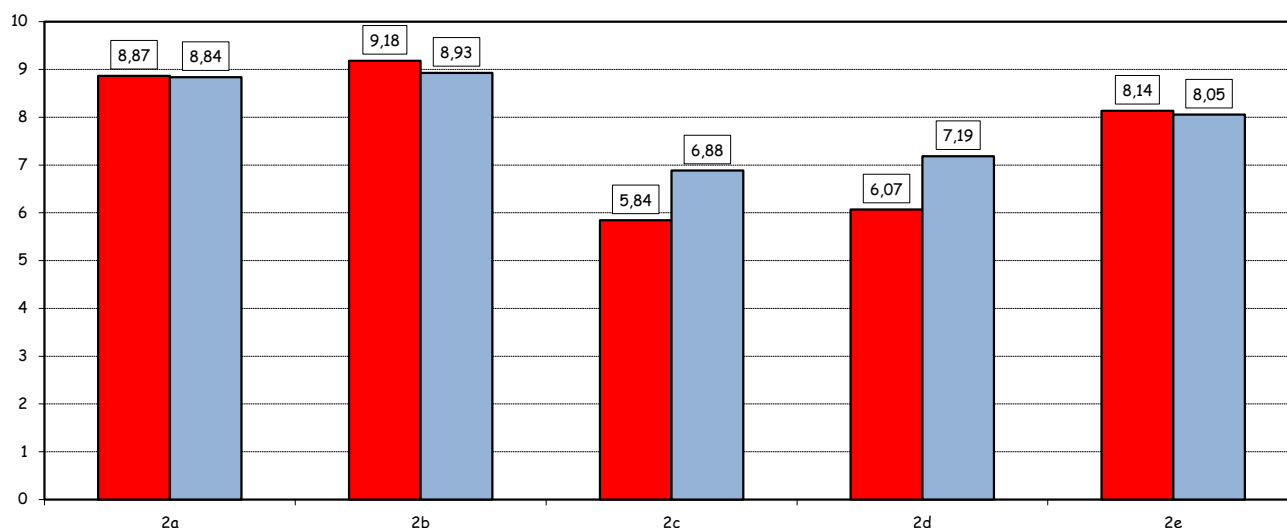
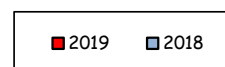
Answers	a.v.	%
A - Always or nearly always adequate	48	80,0%
B - Often adequate	11	18,3%
C - Rarely adequate	1	1,7%
D - Never adequate	0	0,0%
E - I did not use them	0	0,0%
Total	60	100%
NA	3	



2) How do you evaluate:

Item	Answers	Negative				Positive				Total	NA	N.R.	
		1-2		3-4-5		6-7-8		9-10					
		a.v.	%	a.v.	%	a.v.	%	a.v.	%				
a) The functionality of the audio and multi-media systems (e.g. teacher's computer, projectors, video players) installed in the classrooms		0	0,0	2	3,3	17	27,9	42	68,9	61	100,0		2
b) The cleanliness of classrooms and of other common areas of the University (corridors, halls, study rooms)		0	0,0	0	0,0	12	19,7	49	80,3	61	100,0		2
c) The adequacy (in number) of the areas/seats reserved to individual study in the University Library		6	10,5	21	36,8	17	29,8	13	22,8	57	100,0	0	6
d) The adequacy (in number) of the areas/seats reserved to individual study in the other University buildings		8	13,8	15	25,9	21	36,2	14	24,1	58	100,0	3	2
e) The clarity and adequacy of the internal sign system		1	1,7	6	10,2	20	33,9	32	54,2	59	100,0		4

Over time comparison

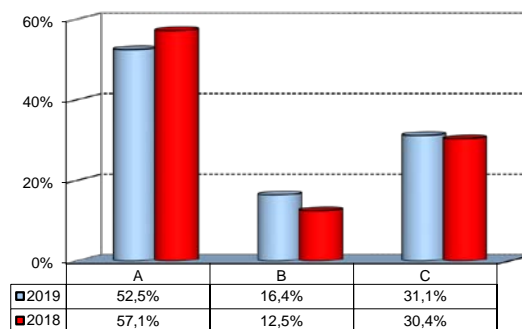


(*): the percentage shown on the graphs is calculated by excluding the responses of those who declare that they have not used the service.

Infrastructure: Classrooms, Library And Facilities

3) What is your overall opinion on PC Laboratories and IT facilities provided by the University?

Answers	a.v.	%
A- Adequate in number	32	52,5%
B- Inadequate in number	10	16,4%
C- Never used	19	31,1%
Total	61	100%
NA	2	

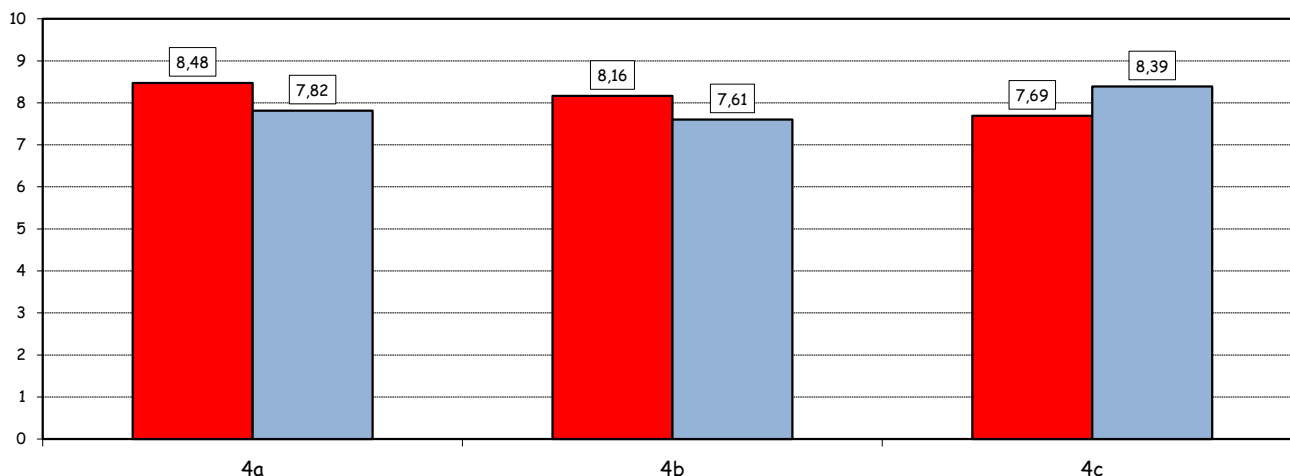


4) How do you evaluate:

Item	Answers	Negative				Positive				Total	NA	
		1-2		3-4-5		6-7-8		9-10				
		a.v.	%	a.v.	%	a.v.	%	a.v.	%			
a) The availability of technical staff supporting students. ^		0	0,0	0	0,0	21	52,5	19	47,5	40	100,0	2
b) The convenience of the PC laboratories' opening hours. ^		0	0,0	2	5,4	20	54,1	15	40,5	37	100,0	5
c) The level of accessibility and use of University's I.T. services (Internet access points, "Punto Blu", Virtual "Punto Blu", wireless connection).		3	5,2	3	5,2	30	51,7	22	37,9	58	100,0	5

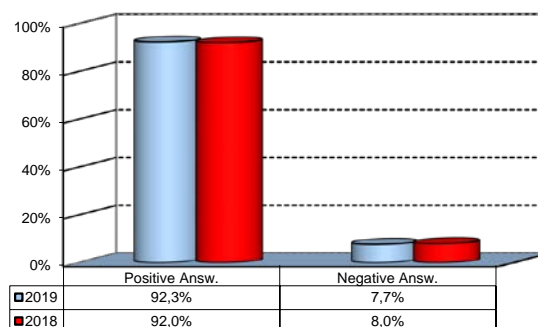
Over time comparison

■ 2019 ■ 2018



5) What is your overall opinion on the Library's services as support for individual study?*

Answers	a.v.	%
A - Very Positive	22	37,3%
B - Quite positive	26	44,1%
C - Quite negative	2	3,4%
D - Very Negative	2	3,4%
E - Never used	7	11,9%
Total	59	100%
NA	4	



(*): Only in case of answer "A" or "B" to item no.3

(*): the percentage shown on the graphs is calculated by excluding the responses of those who declare that they have not used the service.