

VALUTAZIONE ESPERIENZA UNIVERSITARIA

CORSO DI LAUREA IN
**INTERNATIONAL ECONOMICS AND
MANAGEMENT**
A.S.2019



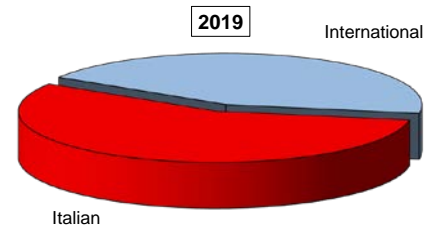
EVALUATION OF STUDENT EXPERIENCE

International Economics and Management

General information

School Career

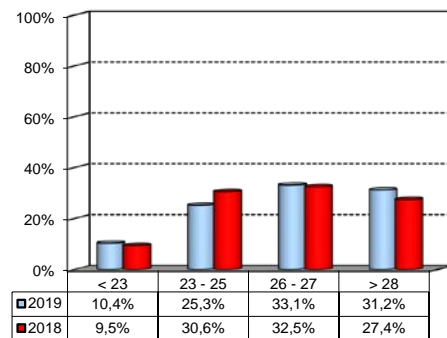
Answers	a.v.	%	
		2019	2018
Italian	200	56,2%	62,3%
International	156	43,8%	37,7%
Total	356	100%	100%
NA	0		



Average mark of the exams passed:

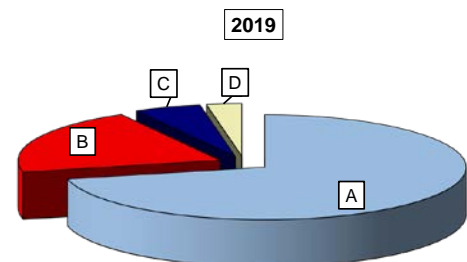
(approximate average expressed in 30/30)

Answers	a.v.	%
< 23	37	10,4%
23 - 25	90	25,3%
26 - 27	118	33,1%
> 28	111	31,2%
Total	356	100%
NA	0	



How many courses included in your study program did you attend regularly?

Answers	a.v.	%	
		2019	2018
A - More than 75%	254	71,3%	71,4%
B - Between 50 and 75%	73	20,5%	18,3%
C - Between 25 and 50%	19	5,3%	7,9%
D - Less than 25%	10	2,8%	2,4%
Total	356	100%	100%
NA	0		

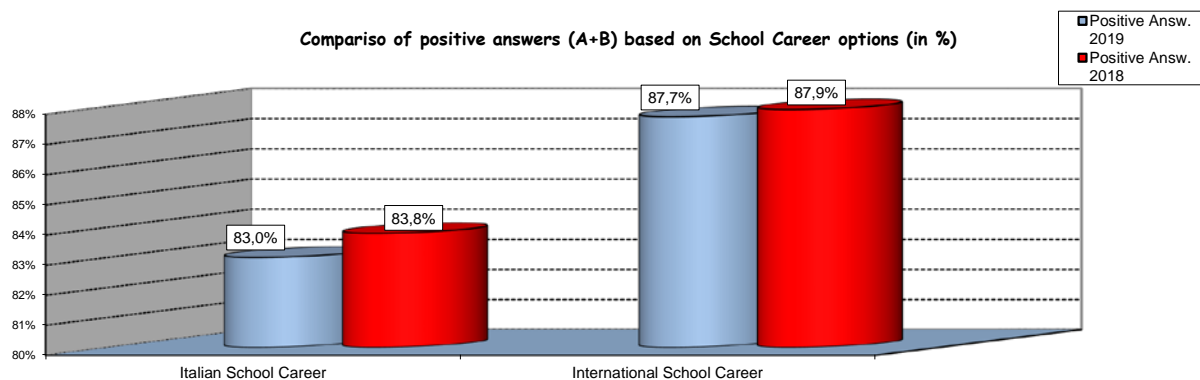


Study experience

1) Was the knowledge acquired during the Secondary School adequate to face the Bachelor Program?

Answers	Italian School Career		International School Career		Total	
	a.v.	%	a.v.	%	a.v.	%
A - Definitely YES	91	45,5%	64	41,6%	155	43,9%
B - More YES than NO	75	37,5%	71	46,1%	146	41,4%
C - More NO than YES	30	15,0%	16	10,4%	46	13,0%
D - Definitely NO	3	1,5%	3	1,9%	6	1,7%
Total	199	100%	154	100%	353	100%
NA	1		2		3	

Comparison of positive answers (A+B) based on School Career options (in %)



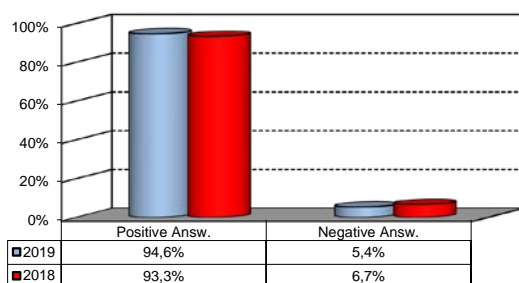
2) if you answered " More NO than YES" or "Definitely NO", indicate the subject or the subjects for which your previous knowledge revealed to be insufficient:

	a.v.	%
MATHEMATICS - MODULE 1 (GENERAL)	25	19,2%
MATHEMATICS - MODULE 2 (APPLIED)	20	15,4%
ACCOUNTING AND FINANCIAL STATEMENT ANALYSIS	15	11,5%
STATISTICS	10	7,7%
ECONOMICS - MODULE 1 (MICROECONOMICS)	10	7,7%
Altro	50	38,5%
Total	130	100%

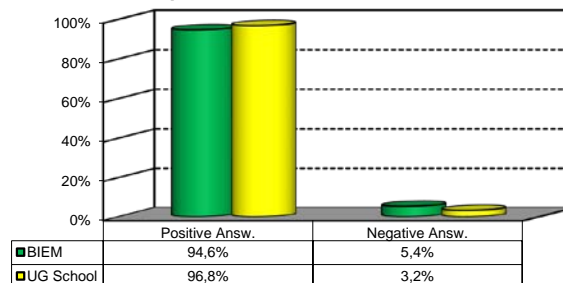
3) On the whole, do you appreciate the qualifications acquired attending the Bachelor Program?

Answers	Italian school Career		Int.nal School Career		Total	
	v.a.	%	v.a.	%	v.a.	%
A - Definitely YES	122	61,0%	89	57,8%	211	59,6%
B - More YES than NO	71	35,5%	53	34,4%	124	35,0%
C - More NO than YES	5	2,5%	11	7,1%	16	4,5%
D - Definitely NO	2	1,0%	1	0,6%	3	0,8%
Total	200	100%	154	100%	354	100%
NA	0		2		2	

Over time comparison



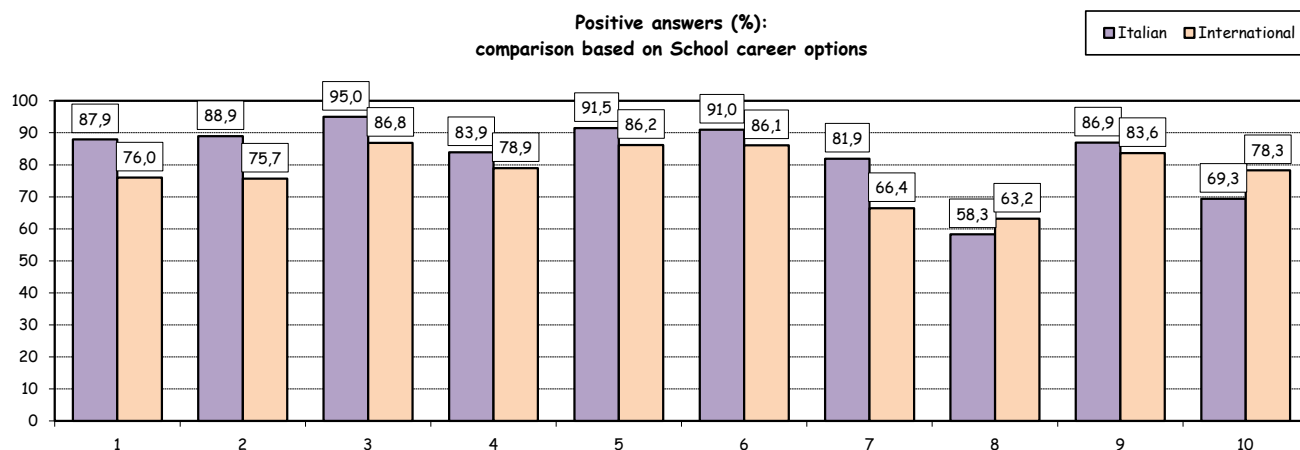
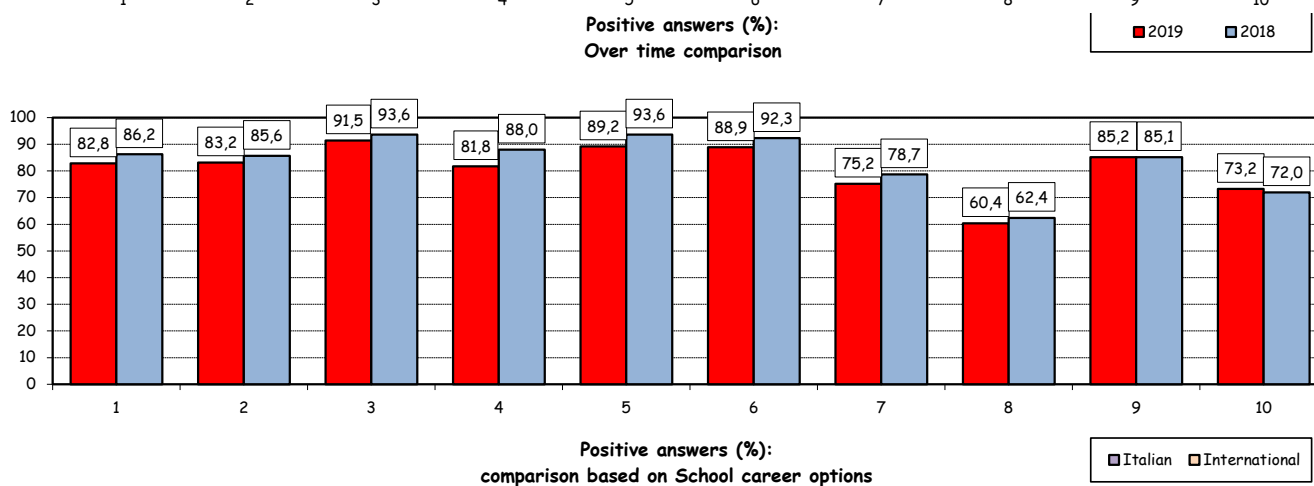
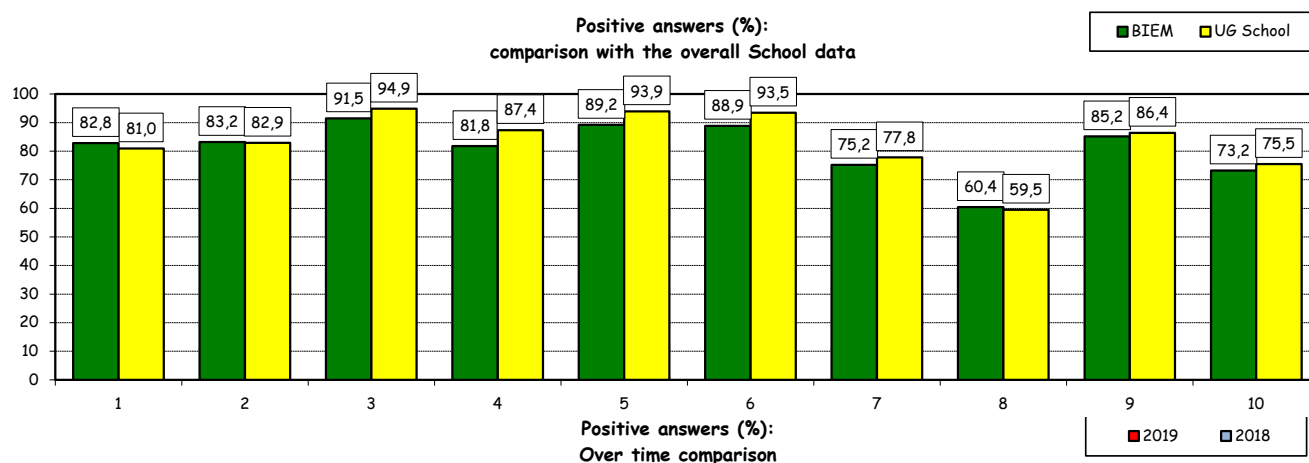
Comparison with the overall School data



Study experience

4) Do you think that the preparation received during the Bachelor Program has contributed to the development of the following skills?

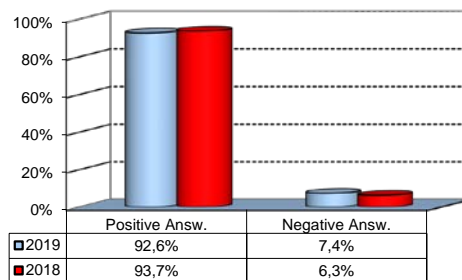
Soft Skill	Item	Definitely YES		More YES than NO		More NO than YES		Definitely NO		Total		n.a.
		a.v.	%	a.v.	%	a.v.	%	a.v.	%	a.v.	%	a.v.
1	Ability to work in team	150	43,0	139	39,8	50	14,3	10	2,9	349	100,0	7
2	Interpersonal skills	152	43,3	140	39,9	46	13,1	13	3,7	351	100,0	5
3	Organizational skills	217	61,8	104	29,6	26	7,4	4	1,1	351	100,0	5
4	Critical thinking skills	151	43,0	136	38,7	55	15,7	9	2,6	351	100,0	5
5	Ability to analyse and select information	188	53,6	125	35,6	33	9,4	5	1,4	351	100,0	5
6	Problem-solving ability	186	53,1	125	35,7	30	8,6	9	2,6	350	100,0	6
7	Written communication skills	138	39,3	126	35,9	74	21,1	13	3,7	351	100,0	5
8	Verbal communication skills	81	23,1	131	37,3	111	31,6	28	8,0	351	100,0	5
9	Ability to cope with stress	204	58,1	95	27,1	34	9,7	18	5,1	351	100,0	5
10	Computer Skills	105	29,9	152	43,3	79	22,5	15	4,3	351	100,0	5



Study experience

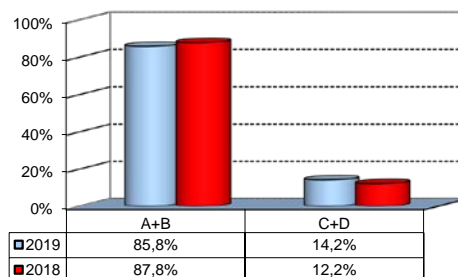
5) Do you think that the courses composing the curriculum were adequately co-ordinated with one another?

	a. v.	%
A - Definitely YES	115	32,7%
B - More YES than NO	211	59,9%
C - More NO than YES	26	7,4%
D - Definitely NO	0	0,0%
Total	352	100%
NA	4	



6) Do you think that the overall study load was commensurate to the length of the program?

	a. v.	%
A - Definitely YES	125	35,5%
B - More YES than NO	177	50,3%
C - More NO than YES	42	11,9%
D - Definitely NO	8	2,3%
Total	352	100%
NA	4	



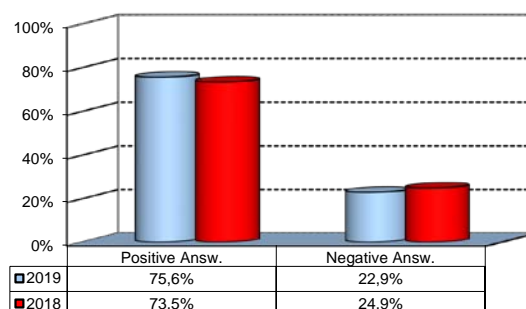
6b) More precisely, you believe that the study load was excessive or insufficient?

	a. v.	% 2019	% 2018
Excessive	7	100,0%	100,0%
Insufficient	0	0,0%	0,0%
Total	7	100%	100%
NA	0		

Final Report

1) Do you think that supervision and assistance for the preparation of the final report (report on internship, final study papers or other) were adequate?

	a. v.	%
A - Definitely YES	130	36,8%
B - More YES than NO	137	38,8%
C - More NO than YES	59	16,7%
D - Definitely NO	22	6,2%
E - Supervision was not expected	5	1,4%
Total	353	100%
NA	3	

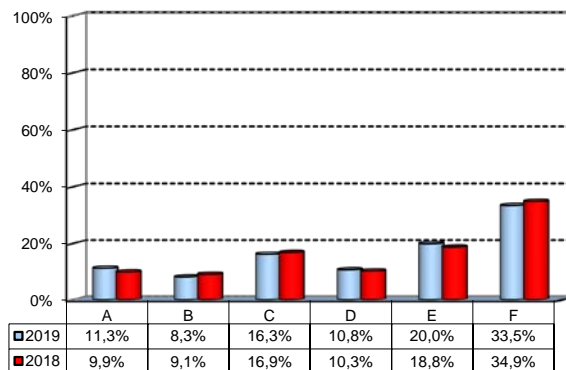


Extracurricular Activities

1) Which of the following extracurricular activities did you attend during the Bachelor Program?

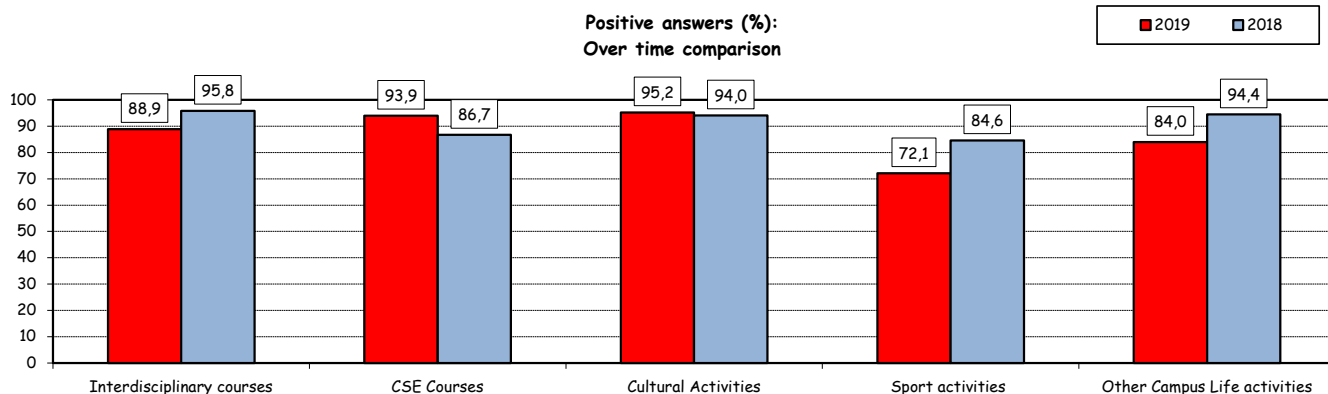
(multiple answers admitted)

	a.v.	%
A - Interdisciplinary courses ("Sapere a tutto campo")	45	11,3%
B - Counseling and Self-Empowerment courses CSE)	33	8,3%
C - Cultural Activities (visit museums, concerts, theatre and cinema, various issues)	65	16,3%
D - Sport activities	43	10,8%
E - Other Campus Life activities	80	20,0%
F - None	134	33,5%
Total	400	100%
NA	0	



2) Do you think that activities in which you took part contributed to your cultural/educational enrichment?

	Definitely YES		More YES than NO		More NO than YES		Definitely NO		Total		NA
	a.v.	%	a.v.	%	a.v.	%	a.v.	%	a.v.	%	va
A - Interdisciplinary courses (Sapere a tutto campo)	24	53,3	16	35,6	5	11,1	0	0,0	45	100,0	0
B - Counseling and Self-Empowerment courses (CSE)	16	48,5	15	45,5	2	6,1	0	0,0	33	100,0	0
C - Cultural Activities	39	61,9	21	33,3	3	4,8	0	0,0	63	100,0	2
D - Sport activities	12	27,9	19	44,2	8	18,6	4	9,3	43	100,0	0
E - Other Campus Life activities	32	42,7	31	41,3	9	12,0	3	4,0	75	100,0	5



How do you evaluate:

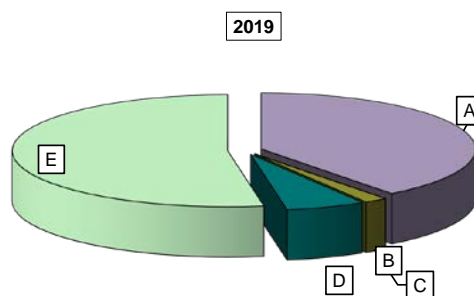
Item	Negative		Positive				Total		NA		
	1-2	3-4-5	6-7-8	9-10	a.v.	%	a.v.	%	va		
3a) The range and interest of programmes offered	3	1,7	12	6,9	94	53,7	66	37,7	175	100,0	47
3b) The support received from Campus Life Office	7	4,0	25	14,5	100	57,8	41	23,7	173	100,0	49



Experience Of Studying Abroad

1) Type of experience:

Answers	a.v.	%	
		2019	2018
A - Exchange	140	39,7%	36,1%
B - Campus Abroad	0	0,0%	2,4%
C - Double Degree	6	1,7%	0,0%
D - Free-Mover	21	5,9%	6,6%
E - None	186	52,7%	54,9%
Total	353	100%	100%
NA	3		

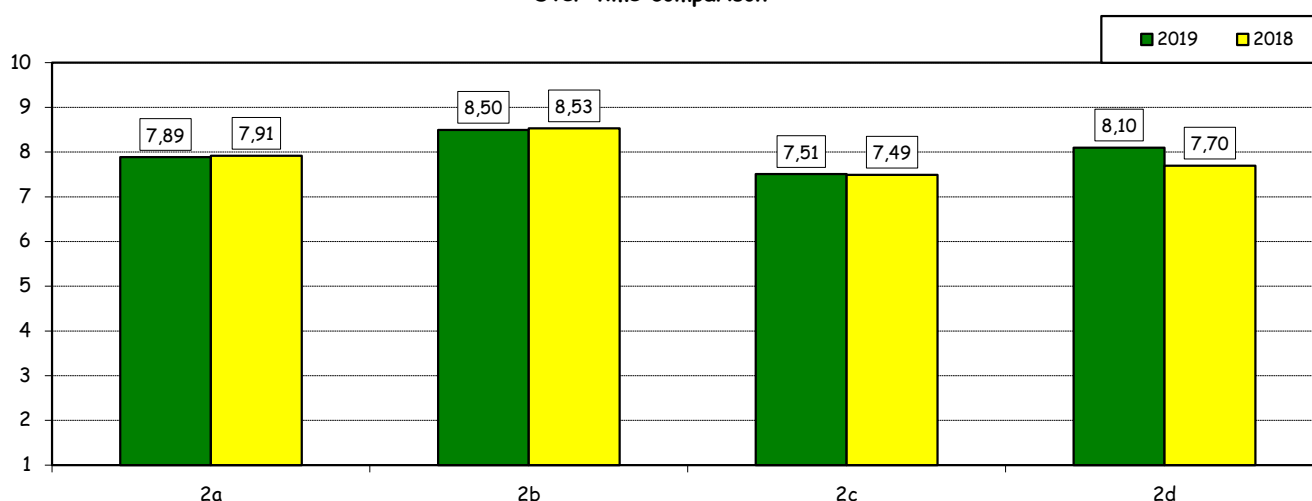


How do you evaluate:

(only A, B or C answers to item no.1)

Item	Answers	Negative				Positive				Total		N.A.
		1-2		3-4-5		6-7-8		9-10		a.v.	%	a.v.
		a.v.	%	a.v.	%	a.v.	%	a.v.	%	a.v.	%	a.v.
2a) The quality and completeness of information given through: "International Week", e-mails, brochures, International Relations Service web page.		2	1,4	9	6,3	87	60,4	46	31,9	144	100,0	2
2b) The range and interest of programmes offered.		0	0,0	4	2,8	60	42,0	79	55,2	143	100,0	3
2c) The convenience of the study abroad desk's opening hours.		4	2,8	10	7,0	94	66,2	34	23,9	142	100,0	4
2d) The support received from Bocconi.		2	1,4	13	9,3	59	42,1	66	47,1	140	100,0	6

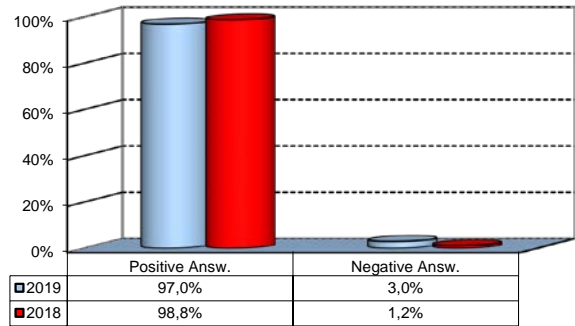
Over time comparison



Experience Of Studying Abroad

3) Do you positively evaluate this experience?

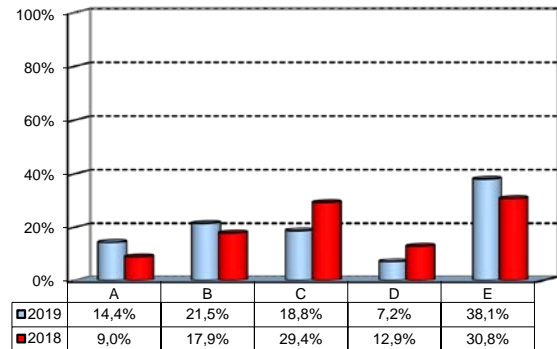
Answers	a. v.	%
A - Definitely YES	118	71,5%
B - More YES than NO	42	25,5%
C - More NO than YES	4	2,4%
D - Definitely NO	1	0,6%
Total	165	100%
NA	2	



(In case of answer "D" to item no.1)

4) Please, indicate why you did not attend a period of study abroad (mark all relevant reasons):

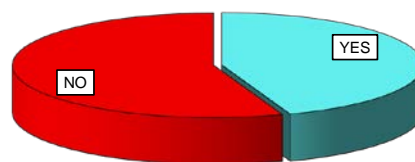
Answers	a. v.	%
A- Lack of interest in this kind of experience	26	14,4%
B- Absence of the requirements needed for participation in the program selected	39	21,5%
C- Rejection of the application	34	18,8%
D- Lack of time during the period of study	13	7,2%
E- Other (personal, family, organizational reasons, etc.)	69	38,1%
Total	181	100%
NA	5	



Internship Activities

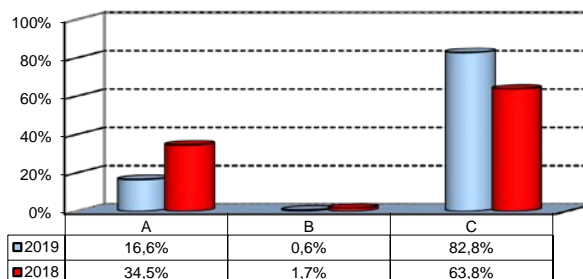
1) Did you attend an internship experience?

	a.v.	2019	2018
YES	157	44,5%	30,6%
NO	196	55,5%	69,4%
Total	353	100%	100%
NA	3		



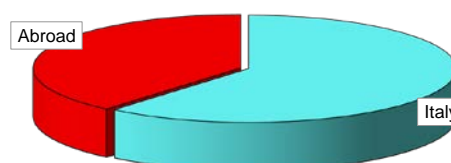
2) How did you access the internship?

	a.v.	%
A - Through Bocconi University's Career Service	26	16,6%
B - Through the program faculty members of the Study Program	1	0,6%
C - Autonomously	130	82,8%
Total	157	100%
NA	0	



3) Where did you do the internship recognised by the Bachelor Program?

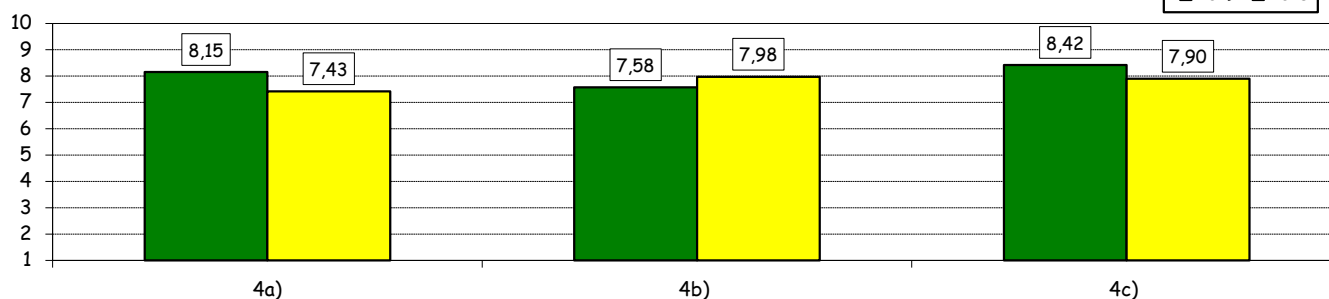
	a.v.	2019	2018
Italy	96	61,1%	51,7%
Abroad	61	38,9%	48,3%
Total	157	100%	100%
NA	0		



How do you evaluate:

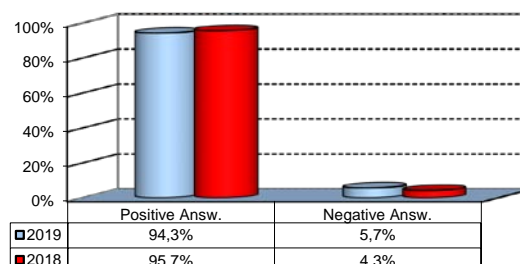
Item	Answers	Negative				Positive				Total	N.A.	
		1-2		3-4-5		6-7-8		9-10				
		a.v.	%	a.v.	%	a.v.	%	a.v.	%			
4a) The convenience of the internship front desk's opening hours.		0	0,0	0	0,0	16	61,5	10	38,5	26	100,0	0
4b) The numerosity and the variety of opportunities offered		0	0,0	3	11,5	14	53,8	9	34,6	26	100,0	0
4c) The support you received from Bocconi.		0	0,0	0	0,0	13	50,0	13	50,0	26	100,0	0

Over time comparison



5) Do you positively evaluate this experience?

	a.v.	%
A - Definitely YES	111	70,7%
B - More YES than NO	37	23,6%
C - More NO than YES	7	4,5%
D - Definitely NO	2	1,3%
Total	157	100%
NA	0	



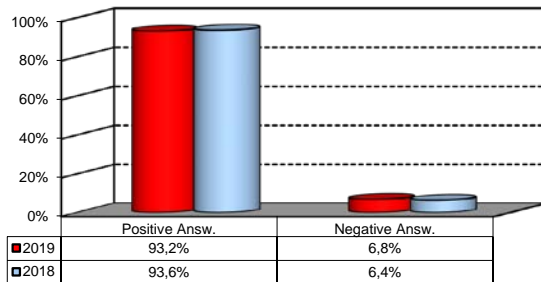
*JobGate, Internship Programs, Companies' meetings and presentations, Bocconi&Jobs, Placement Library's services, Curricular Internship Special, websites reported in the section 'Lavoro.net'

General satisfaction and short-term plans

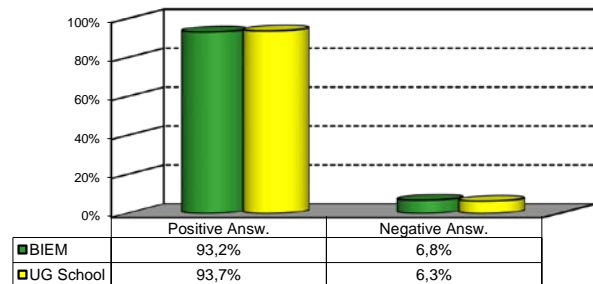
1) Are you overall satisfied with the Bachelor Program?

Answers	Italian School career		Int.nal School Career		Total	
	a.v.	%	a.v.	%	a.v.	%
A - Definitely YES	116	58,3%	79	52,0%	195	55,6%
B - More YES than NO	74	37,2%	58	38,2%	132	37,6%
C - More NO than YES	8	4,0%	14	9,2%	22	6,3%
D - Definitely NO	1	0,5%	1	0,7%	2	0,6%
Total	199	100%	152	100%	351	100%
NA	1		4		5	

Over time comparison



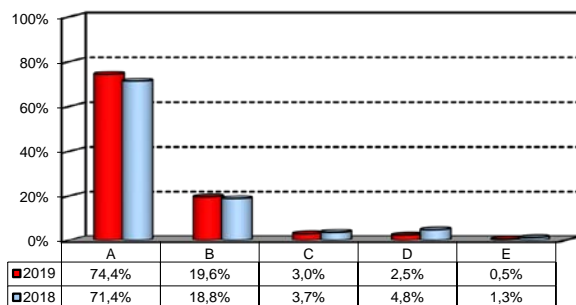
Comparison with the overall School data



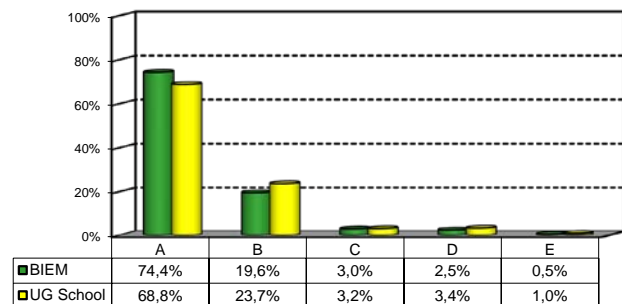
2a) If you could go back in time, would you enroll in the University again?

Answers	Italian School career		Int.nal School Career		Total	
	a.v.	%	a.v.	%	a.v.	%
A - YES, in the same Bachelor Program at this University	148	74,4%	98	65,3%	246	70,5%
B - YES, in another Program at this University	39	19,6%	38	25,3%	77	22,1%
C - YES, in the same Program but at another University	6	3,0%	7	4,7%	13	3,7%
D - YES, in another Program at another University	5	2,5%	6	4,0%	11	3,2%
E - NO, I would not enrol in any University program	1	0,5%	1	0,7%	2	0,6%
Total	199	100%	150	100%	349	100%
NA	1		6		7	

Over time comparison



Comparison with the overall School data



General satisfaction and short-term plans

(In case of answer "B" to item no.2a)

2b) Which Bachelor Program would you enroll at this University?

CdL	v.a.	%
BEMACS	15	19,5%
BIEF	31	40,3%
BIEM	5	6,5%
BIG	9	11,7%
CLEACC	4	5,2%
CLEAM	6	7,8%
CLEF	0	0,0%
CLES	4	5,2%
CLMG	0	0,0%
WBB	3	3,9%
Total	77	100%

(In case of answer "C", "D" or "E" to item no.2a)

2c) Why would you make a different choice?

Answers	Italian School career		Int.nal School Career		Total		
	v.a.	%	v.a.	%	2019		2018
					v.a.	%	%
A - My interest has changed during this time / I discovered that I have different attitudes	3	30,0%	3	23,1%	6	26,1%	27,8%
B - The Bachelor program did not mirror my expectations	6	60,0%	2	15,4%	8	34,8%	30,6%
C- I have not been admitted to the Bachelor Program selected as first-choice.	0	0,0%	0	0,0%	0	0,0%	0,0%
D- The campus and its facilities and services were not up to my expectations	1	10,0%	6	46,2%	7	30,4%	16,7%
E- I would have preferred to attend the same Bachelor Program but taught in English.	0	0,0%	0	0,0%	0	0,0%	2,8%
F - Other reasons	0	0,0%	2	15,4%	2	8,7%	22,2%
Total	10	100%	13	100%	23	100%	100%
NA	1		2		3		

F- Other reasons:

Because more than half of the courses were about obvious concepts
Campus was not up to expectations Bachelor did not mirror my expectations More flexible institution
go abroad and discovered different attitudes
I was forced to study Economics

General satisfaction and short-term plans

3) In the near future do you intend:

	Italian School career		Int.nal School Career		Total		2018 %
	a.v.	%	a.v.	%	2019 a.v.	%	
A- To go on with university studies at Bocconi (Master of Science, one-year Master of Science)	99	61,9%	12	10,5%	111	40,5%	38,4%
B-To go on with university studies at another Italian University	3	1,9%	2	1,8%	5	1,8%	3,3%
C- To go on with university studies abroad	53	33,1%	55	48,2%	108	39,4%	41,7%
D - To immediately look for a job	3	1,9%	25	21,9%	28	10,2%	8,8%
E - To accept a job which has already been proposed to you	2	1,3%	13	11,4%	15	5,5%	4,6%
F - To continue to do the job you began during this degree program	0	0,0%	7	6,1%	7	2,6%	3,3%
Total	160	100%	114	100%	274	100%	100%
NA	40		42		82		

4) If you intend to go on with university studies at other University (in Italy or abroad), what are the reasons of this choice? (multiple answers admitted)

	Italian School career		Int.nal School Career		Total		2018 %
	a.v.	%	a.v.	%	2019 a.v.	%	
A - I would like to attend a more prestigious university	13	14,3%	16	17,8%	29	16,0%	12,0%
B - I would like to build a strong international curriculum	48	52,7%	43	47,8%	91	50,3%	50,2%
C- I can not bear the cost of studies (tuition fees and cost of living)	1	1,1%	3	3,3%	4	2,2%	5,7%
D - I can not bear the cost of studies (tuition fees and cost of living)	4	4,4%	4	4,4%	8	4,4%	4,3%
E- The administrative services are not sufficiently efficient	3	3,3%	2	2,2%	5	2,8%	3,3%
F - I think that the contents of Bocconi's MSc programs do not differ much from those of undergraduate programs	15	16,5%	13	14,4%	28	15,5%	11,5%
G - Other reasons	7	7,7%	9	10,0%	16	8,8%	12,9%
Total	91	100%	90	100%	181	100%	100%
NA	1		1		2		

General satisfaction and short-term plans

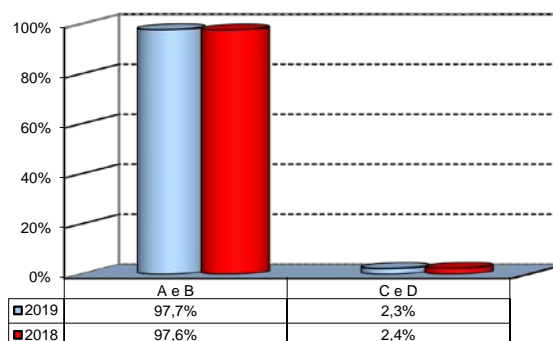
G - Other reasons:

Bocconi does not offer the masters I would like to attend.
Come back to France
Desidero vivere in un'altra città
having missed the opportunity to do the exchange abroad during the bachelor due to personal reasons, I wanted to have an experience abroad for the master's degree. Moreover, I've found at IE the possibility of doing a double degree in two years in two different topics (mim and computer science) that weren't possible to mix in bocconi.
I also want to see something else. Bocconi and Milan have been enjoyable but I want to see something else now
I want to do a 1 year programme
I want to go back to France to complete my Master Degree there in order to start to work there afterward.
I wanted to continue my studies at Bocconi, but, unfortunately, I was not accepted into a Master of Science program.
I would like to discover a new place and I am interested in a degree that is not offered by bocconi
I would like to move to a different country
Il fatto che l'unico criterio di valutazione per l'accesso ai corsi di laurea magistrali sia la media è a mio parere profondamente sbagliato perché va a creare ambienti ipercompetitivi, poco stimolanti e con persone di simili competenze, ideali e personalità. Credo che la media vada coadiuvata da una valutazione a 360 gradi degli studenti per valorizzare al meglio talenti dall'altissimo potenziale che magari hanno medie anche intorno al 26/27 che con il metodo attuale vanno sprecati.
In all honesty: master classes are decided solely on people's GPA (even though Bocconi says it's not entirely your average). This means that cohorts are made of people who study a lot, but haven't done much else in their lives (internships, extra curriculars, languages etc.). I feel like this hurts the overall class, and discussions wouldn't really be interesting. (Assumption: my average of 29.5 would have allowed me to attend any Bocconi Master's Course). I prefer to go abroad, where classes are based on all-around merits rather than just academics (which is v flawed in my opinion).
My average does not allow me to enter in one of the Bocconi Master programs as the requirements to enter are very high
ricerca di un corso di studi pi pratico e meno teorico
Sono italiana di Milano e sono curiosa del RoW.
The criteria for being accepted are too strict and my GPA is not good enough even though I have other similar qualifications like GMAT, etc.
The possibility of doing a gap year between the first and the second year of the Master degree, in order to work and figure out what I want to do before specializing during the second year. Learn a foreign language. Course content of the Master degree

Infrastructure: Classrooms, Library And Facilities

1) What is your opinion about the classrooms where lessons and other teaching activities have been carried out?*

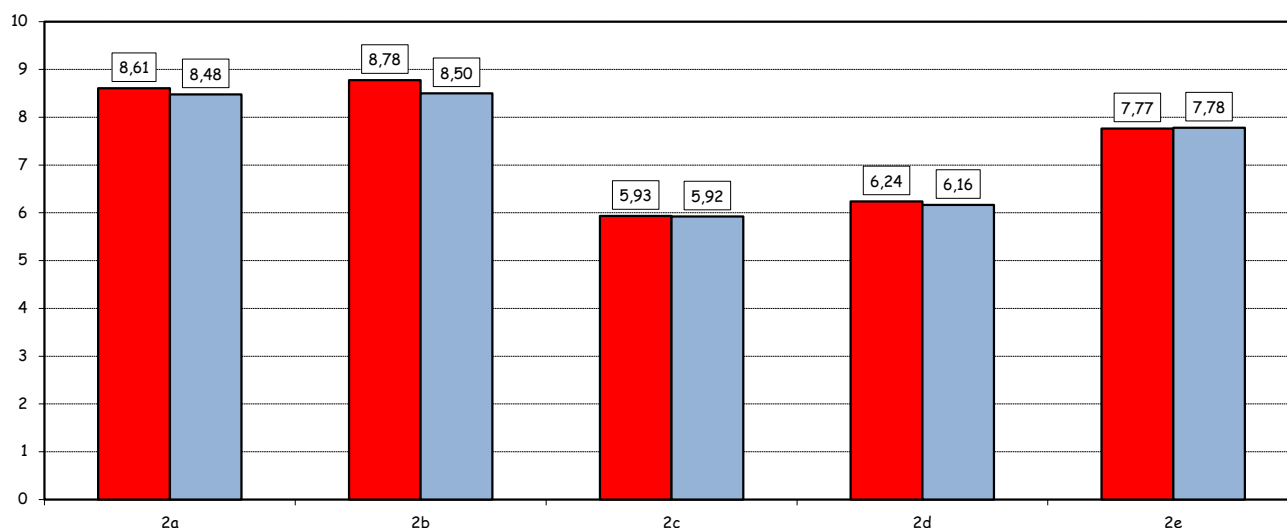
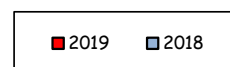
Answers	a.v.	%
A - Always or nearly always adequate	252	72,4%
B - Often adequate	87	25,0%
C - Rarely adequate	6	1,7%
D - Never adequate	2	0,6%
E - I did not use them	1	0,3%
Total	348	100%
NA	8	



2) How do you evaluate:

Item	Answers	Negative				Positive				Total	NA	N.R.	
		1-2		3-4-5		6-7-8		9-10					
		a.v.	%	a.v.	%	a.v.	%	a.v.	%				
a) The functionality of the audio and multi-media systems (e.g. teacher's computer, projectors, video players) installed in the classrooms		0	0,0	12	3,4	131	37,5	206	59,0	349	100,0		7
b) The cleanliness of classrooms and of other common areas of the University (corridors, halls, study rooms)		2	0,6	6	1,7	108	31,1	231	66,6	347	100,0		9
c) The adequacy (in number) of the areas/seats reserved to individual study in the University Library		56	17,0	78	23,6	117	35,5	79	23,9	330	100,0	8	18
d) The adequacy (in number) of the areas/seats reserved to individual study in the other University buildings		39	11,8	76	23,0	146	44,1	70	21,1	331	100,0	17	8
e) The clarity and adequacy of the internal sign system		6	1,8	34	9,9	166	48,5	136	39,8	342	100,0		14

Over time comparison

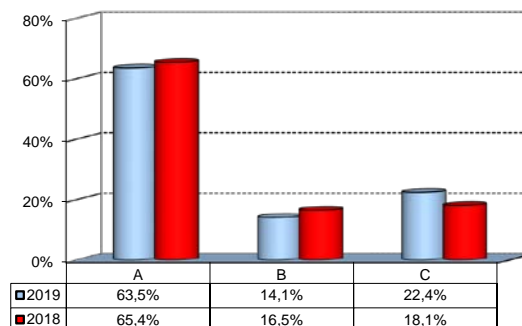


(*): the percentage shown on the graphs is calculated by excluding the responses of those who declare that they have not used the service.

Infrastructure: Classrooms, Library And Facilities

3) What is your overall opinion on PC Laboratories and IT facilities provided by the University?

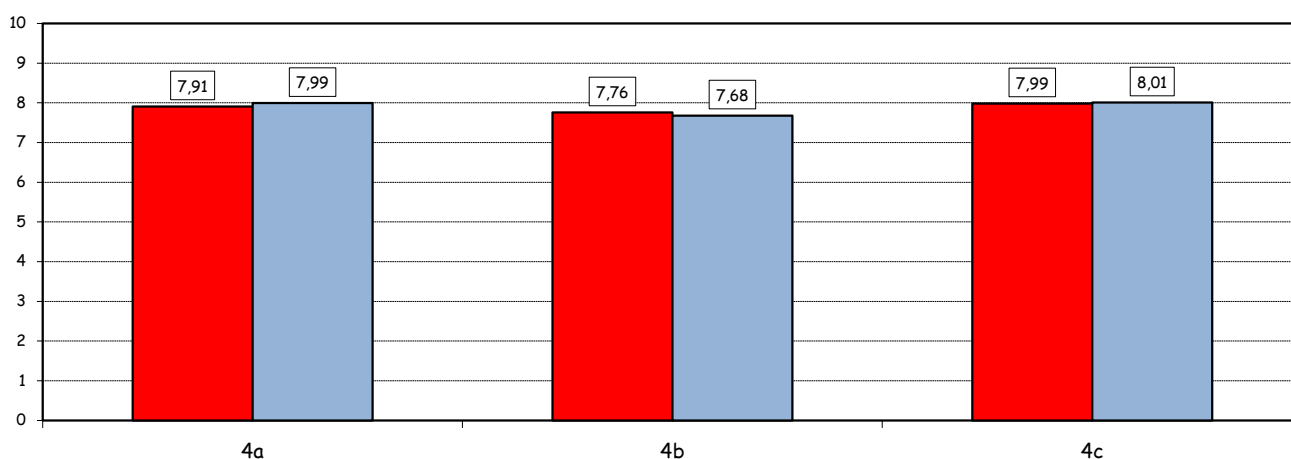
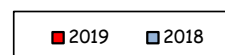
Answers	a.v.	%
A- Adequate in number	221	63,5%
B- Inadequate in number	49	14,1%
C- Never used	78	22,4%
Total	348	100%
NA	8	



4) How do you evaluate:

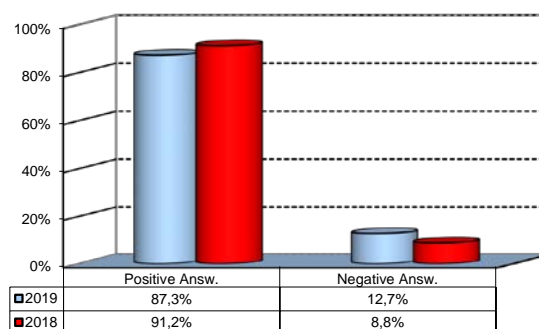
Item	Answers	Negative				Positive				Total		NA
		1-2		3-4-5		6-7-8		9-10		a.v.	%	
		a.v.	%	a.v.	%	a.v.	%	a.v.	%			
a) The availability of technical staff supporting students.^		5	1,9	17	6,4	142	53,4	102	38,3	266	100,0	4
b) The convenience of the PC laboratories' opening hours.^		3	1,2	16	6,2	162	62,3	79	30,4	260	100,0	10
c) The level of accessibility and use of University's I.T. services (Internet access points, "Punto Blu", Virtual "Punto Blu", wireless connection).		3	0,9	22	6,6	172	51,3	138	41,2	335	100,0	21

Over time comparison



5) What is your overall opinion on the Library's services as support for individual study?*

Answers	a.v.	%
A - Very Positive	115	33,3%
B - Quite positive	152	44,1%
C - Quite negative	32	9,3%
D - Very Negative	7	2,0%
E - Never used	39	11,3%
Total	345	100%
NA	11	



(*): Only in case of answer "A" or "B" to item no.3

(*): the percentage shown on the graphs is calculated by excluding the responses of those who declare that they have not used the service.