

## VALUTAZIONE ESPERIENZA UNIVERSITARIA

CORSO DI LAUREA IN  
**INTERNATIONAL ECONOMICS AND  
FINANCE**  
**A.S.2019**



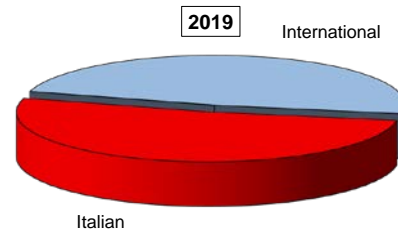
## EVALUATION OF STUDENT EXPERIENCE

### International Economics and Finance

#### General information

##### School Career

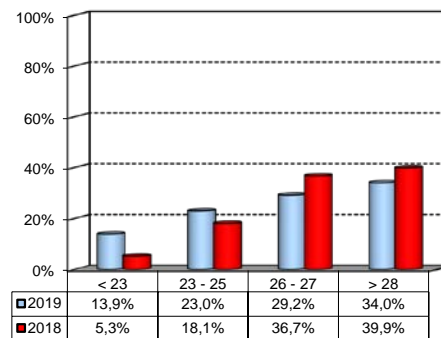
Answers	a.v.	%	
		2019	2018
Italian	108	51,7%	59,6%
International	101	48,3%	40,4%
<b>Total</b>	<b>209</b>	<b>100%</b>	<b>100%</b>
NA	0		



##### Average mark of the exams passed:

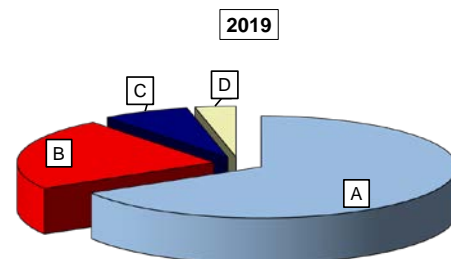
(approximate average expressed in 30/30)

Answers	a.v.	%
< 23	29	13,9%
23 - 25	48	23,0%
26 - 27	61	29,2%
> 28	71	34,0%
<b>Total</b>	<b>209</b>	<b>100%</b>
NA	0	



##### How many courses included in your study program did you attend regularly?

Answers	a.v.	%	
		2019	2018
A - More than 75%	139	66,5%	70,2%
B - Between 50 and 75%	48	23,0%	20,7%
C - Between 25 and 50%	15	7,2%	6,9%
D - Less than 25%	7	3,3%	2,1%
<b>Total</b>	<b>209</b>	<b>100%</b>	<b>100%</b>
NA	0		

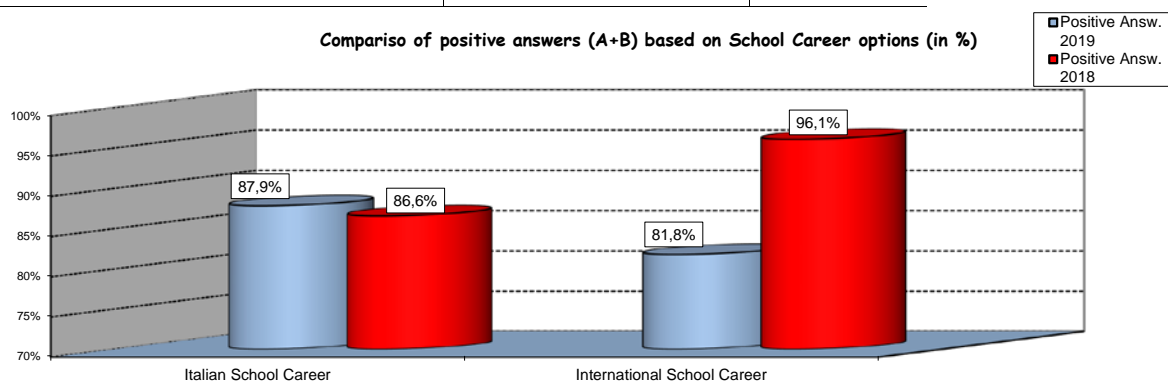


## Study experience

1) Was the knowledge acquired during the Secondary School adequate to face the Bachelor

Answers	Italian School Career		International School Career		Total	
	a.v.	%	a.v.	%	a.v.	%
A - Definitely YES	54	50,5%	52	52,5%	106	50,7%
B - More YES than NO	40	37,4%	29	29,3%	69	33,0%
C - More NO than YES	10	9,3%	18	18,2%	28	13,4%
D - Definitely NO	4	3,7%	2	2,0%	6	2,9%
<b>Total</b>	<b>108</b>	<b>101%</b>	<b>101</b>	<b>102%</b>	<b>209</b>	<b>100%</b>
NA	0		0		0	

Compariso of positive answers (A+B) based on School Career options (in %)



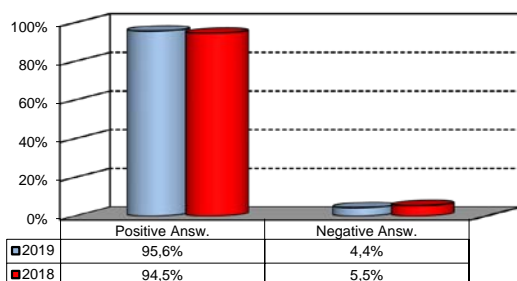
2) if you answered " More NO than YES" or "Definitely NO", indicate the subject or the subjects for which your previous knowledge revealed to be insufficient:

	a.v.	%
MATEMATICA - MODULO 1 (GENERALE)	36	19,9%
MATEMATICA - MODULO 2 (APPLICATA)	20	11,0%
BILANCIO	15	8,3%
METODI QUANTITATIVI PER LA FINANZA	12	6,6%
STATISTICA	12	6,6%
COMPUTER SCIENCE	9	5,0%
EMPIRICAL METHODS FOR FINANCE		
(INTRODUCTION TO ECONOMETRICS FOR	8	4,4%
MATEMATICA	8	4,4%
Altro	61	33,7%
<b>Total</b>	<b>181</b>	<b>100%</b>

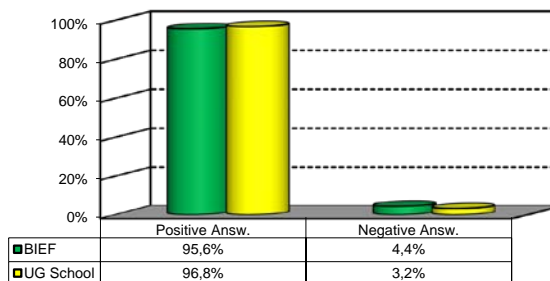
3) On the whole, do you appreciate the qualifications acquired attending the Bachelor Program?

Answers	Italian School Career		International School Career		Total	
	a.v.	%	a.v.	%	a.v.	%
A - Definitely YES	78	72,9%	62	62,6%	140	68,0%
B - More YES than NO	27	25,2%	30	30,3%	57	27,7%
C - More NO than YES	2	1,9%	7	7,1%	9	4,4%
D - Definitely NO	0	0,0%	0	0,0%	0	0,0%
<b>Total</b>	<b>107</b>	<b>100%</b>	<b>99</b>	<b>100%</b>	<b>206</b>	<b>100%</b>
NA	1		2		3	

Over time comparison



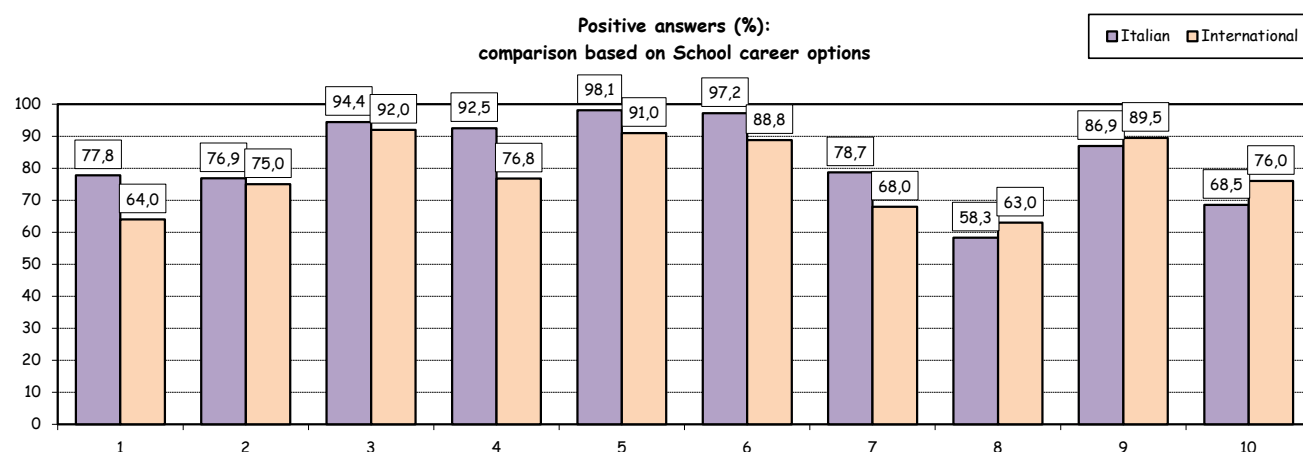
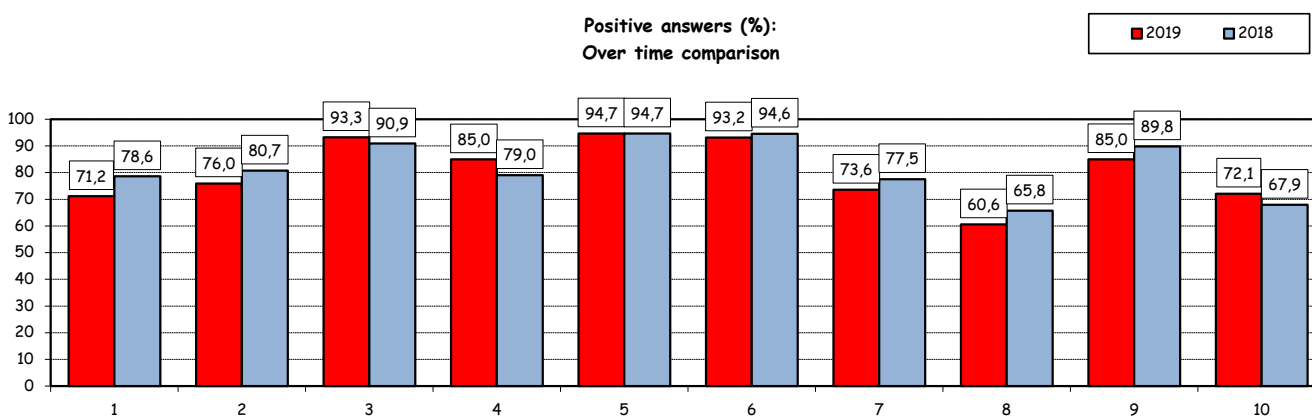
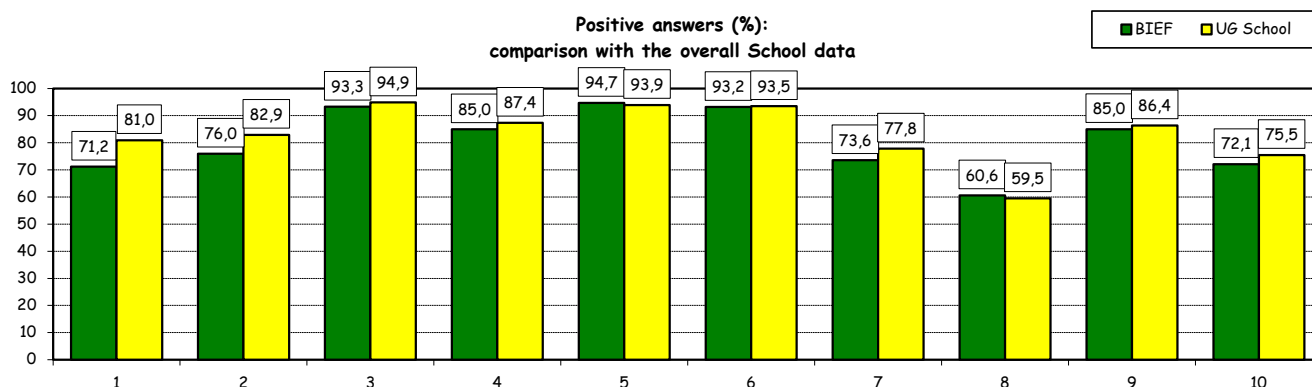
Comparison with the overall School data



## Study experience

4) Do you think that the preparation received during the Bachelor Program has contributed to the development of the following skills?

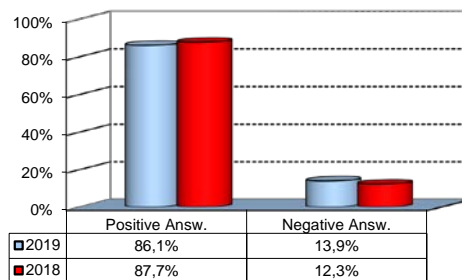
Soft Skill	Item	Definitely YES		More YES than NO		More NO than YES		Definitely NO		Total		n.a.
		a.v.	%	a.v.	%	a.v.	%	a.v.	%	a.v.	%	a.v.
1	Ability to work in team	60	28,8	88	42,3	52	25,0	8	3,8	208	100,0	1
2	Interpersonal skills	68	32,7	90	43,3	41	19,7	9	4,3	208	100,0	1
3	Organizational skills	118	56,7	76	36,5	13	6,3	1	0,5	208	100,0	1
4	Critical thinking skills	89	43,2	86	41,7	26	12,6	5	2,4	206	100,0	3
5	Ability to analyse and select information	128	61,8	68	32,9	9	4,3	2	1,0	207	100,0	2
6	Problem-solving ability	109	53,2	82	40,0	12	5,9	2	1,0	205	100,0	4
7	Written communication skills	79	38,0	74	35,6	43	20,7	12	5,8	208	100,0	1
8	Verbal communication skills	43	20,7	83	39,9	61	29,3	21	10,1	208	100,0	1
9	Ability to cope with stress	109	52,7	67	32,4	21	10,1	10	4,8	207	100,0	2
10	Computer Skills	68	32,7	82	39,4	51	24,5	7	3,4	208	100,0	1



## Study experience

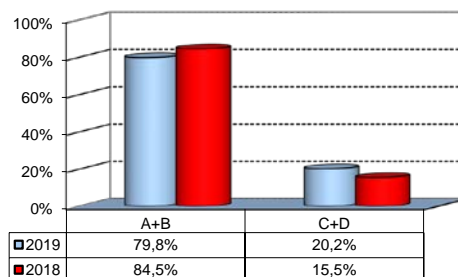
5) Do you think that the courses composing the curriculum were adequately co-ordinated with one another?

	a. v.	%
A - Definitely YES	61	29,3%
B - More YES than NO	118	56,7%
C - More NO than YES	23	11,1%
D - Definitely NO	6	2,9%
<b>Total</b>	<b>208</b>	<b>100%</b>
NA	1	



6) Do you think that the overall study load was commensurate to the length of the program?

	a. v.	%
A - Definitely YES	76	36,5%
B - More YES than NO	90	43,3%
C - More NO than YES	36	17,3%
D - Definitely NO	6	2,9%
<b>Total</b>	<b>208</b>	<b>100%</b>
NA	1	



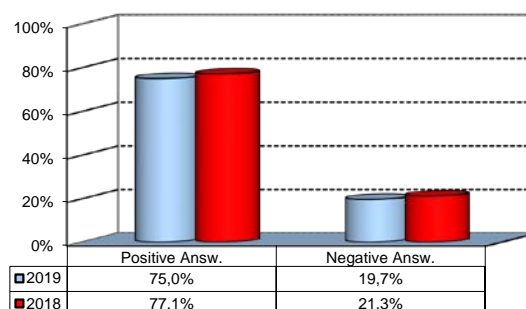
6b) More precisely, you believe that the study load was excessive or insufficient?

	a. v.	% 2019	% 2018
Excessive	6	100,0%	80,0%
Insufficient	0	0,0%	20,0%
<b>Total</b>	<b>6</b>	<b>100%</b>	<b>100%</b>
NA	0		

## Final Report

1) Do you think that supervision and assistance for the preparation of the final report (report on internship, final study papers or other) were adequate?

	a. v.	%
A - Definitely YES	90	43,3%
B - More YES than NO	66	31,7%
C - More NO than YES	29	13,9%
D - Definitely NO	12	5,8%
E - Supervision was not expected	11	5,3%
<b>Total</b>	<b>208</b>	<b>100%</b>
NA	1	

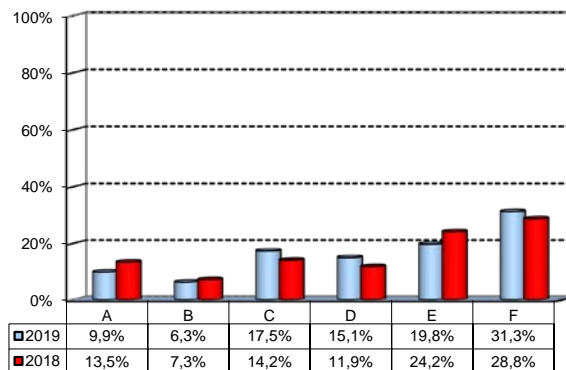


## Extracurricular Activities

1) Which of the following extracurricular activities did you attend during the Bachelor Program?

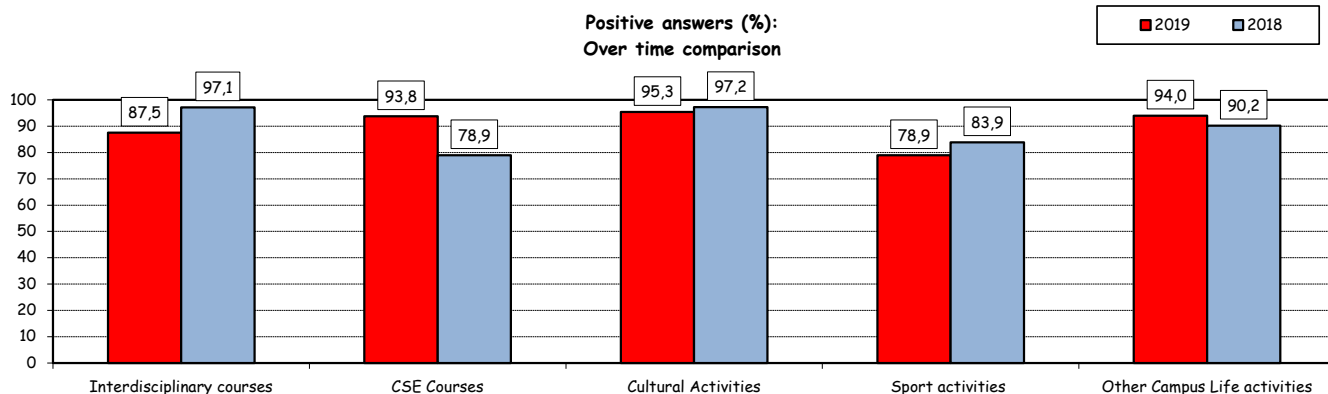
(multiple answers admitted)

	a.v.	%
A - Interdisciplinary courses ("Sapere a tutto campo")	25	9,9%
B - Counseling and Self-Empowerment courses (CSE)	16	6,3%
C - Cultural Activities (visit museums, concerts, theatre and cinema, various issues)	44	17,5%
D - Sport activities	38	15,1%
E - Other Campus Life activities	50	19,8%
F - None	79	31,3%
<b>Total</b>	<b>252</b>	<b>100%</b>
NA	0	



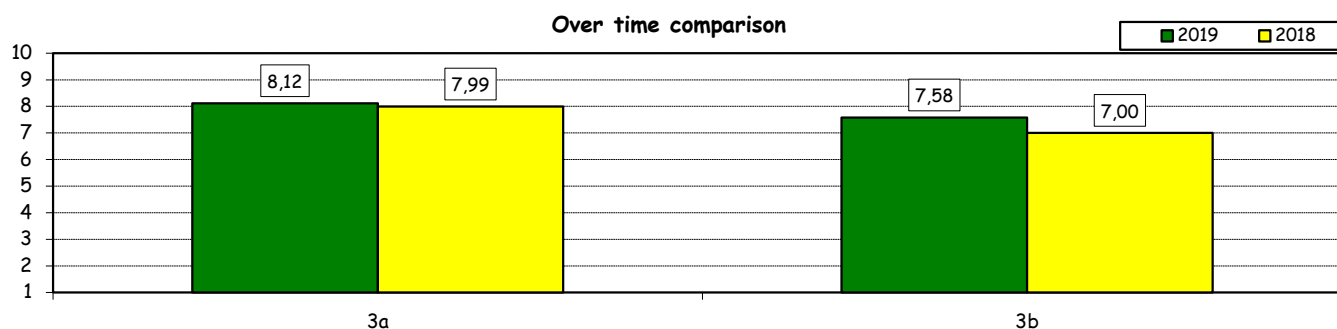
2) Do you think that activities in which you took part contributed to your cultural/educational enrichment?

	Definitely YES		More YES than NO		More NO than YES		Definitely NO		Total		NA
	a.v.	%	a.v.	%	a.v.	%	a.v.	%	a.v.	%	va
A - Interdisciplinary courses (Sapere a tutto campo)	11	45,8	10	41,7	3	12,5	0	0,0	24	100,0	1
B - Counseling and Self-Empowerment courses (CSE)	5	31,3	10	62,5	1	6,3	0	0,0	16	100,0	0
C - Cultural Activities	23	53,5	18	41,9	1	2,3	1	2,3	43	100,0	1
D - Sport activities	15	39,5	15	39,5	5	13,2	3	7,9	38	100,0	0
E - Other Campus Life activities	26	52,0	21	42,0	3	6,0	0	0,0	50	100,0	0



How do you evaluate:

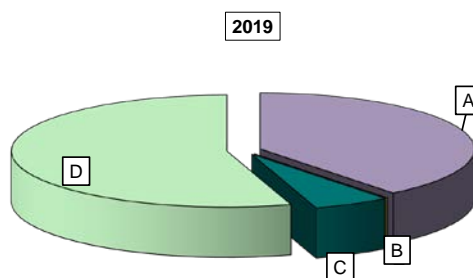
Item	Answers	Negative				Positive				Total		NA
		1-2		3-4-5		6-7-8		9-10		a.v.	%	
		a.v.	%	a.v.	%	a.v.	%	a.v.	%	a.v.	%	
3a) The range and interest of programmes offered		0	0,0	5	4,9	59	57,3	39	37,9	103	100,0	27
3b) The support received from Campus Life Office		1	1,0	11	11,0	57	57,0	31	31,0	100	100,0	30



## Experience Of Studying Abroad

### 1) Type of experience:

Answers	a.v.	%	
		2019	2018
A - Exchange	82	39,4%	47,3%
B - Campus Abroad	0	0,0%	2,1%
C - Double Degree	0	0,0%	0,0%
D - Free-Mover	12	5,8%	2,7%
E - None	114	54,8%	47,9%
<b>Total</b>	<b>208</b>	<b>100%</b>	<b>100%</b>
NA	1		

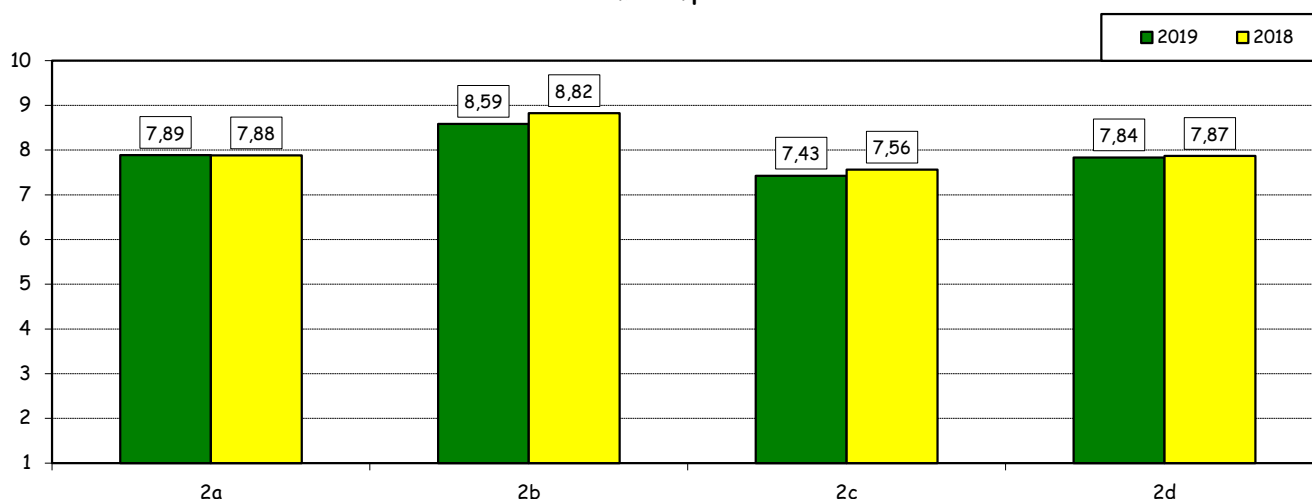


### How do you evaluate:

(only A, B or C answers to item no.1)

Item	Answers	Negative				Positive				Total		N.A.
		1-2		3-4-5		6-7-8		9-10		a.v.	%	a.v.
		a.v.	%	a.v.	%	a.v.	%	a.v.	%	a.v.	%	a.v.
2a) The quality and completeness of information given through: "International Week", e-mails, brochures, International Relations Service web page.		1	1,2	6	7,3	40	48,8	35	42,7	82	100,0	0
2b) The range and interest of programmes offered.		0	0,0	4	4,9	29	35,4	49	59,8	82	100,0	0
2c) The convenience of the study abroad desk's opening hours.		4	4,9	6	7,3	45	54,9	27	32,9	82	100,0	0
2d) The support received from Bocconi.		3	3,8	8	10,1	33	41,8	35	44,3	79	100,0	3

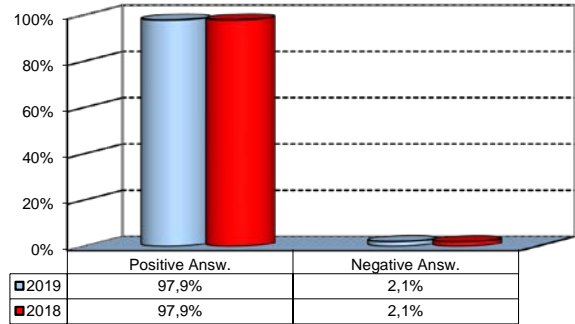
### Over time comparison



## Experience Of Studying Abroad

3) Do you positively evaluate this experience?

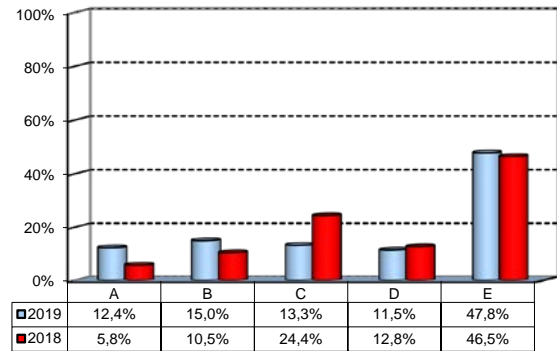
Answers	a. v.	%
A - Definitely YES	66	70,2%
B - More YES than NO	26	27,7%
C - More NO than YES	1	1,1%
D - Definitely NO	1	1,1%
<b>Total</b>	<b>94</b>	<b>100%</b>
NA	0	



(In case of answer "D" to item no.1)

4) Please, indicate why you did not attend a period of study abroad (mark all relevant reasons):

Answers	a. v.	%
A- Lack of interest in this kind of experience	14	12,4%
B- Absence of the requirements needed for participation in the program selected	17	15,0%
C- Rejection of the application	15	13,3%
D- Lack of time during the period of study	13	11,5%
E- Other (personal, family, organizational reasons, etc.)	54	47,8%
<b>Total</b>	<b>113</b>	<b>100%</b>
NA	1	

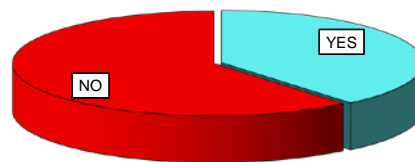




## Internship Activities

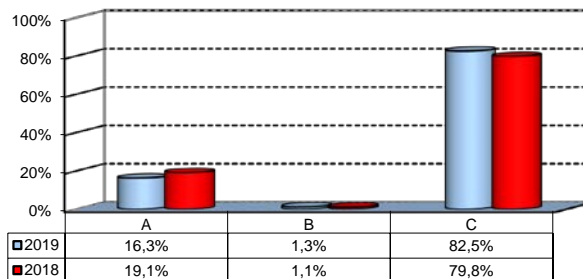
### 1) Did you attend an internship experience?

	a.v.	2019	2018
YES	81	38,9%	47,3%
NO	127	61,1%	52,7%
<b>Total</b>	<b>208</b>	<b>100%</b>	<b>100%</b>
NA	1		



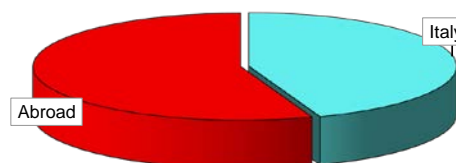
### 2) How did you access the internship?

	a.v.	%
A - Through Bocconi University's Career Service	13	16,3%
B - Through the program faculty members of the Study Program	1	1,3%
C - Autonomously	66	82,5%
<b>Total</b>	<b>80</b>	<b>100%</b>
NA	1	



### 3) Where did you do the internship recognised by the Bachelor Program?

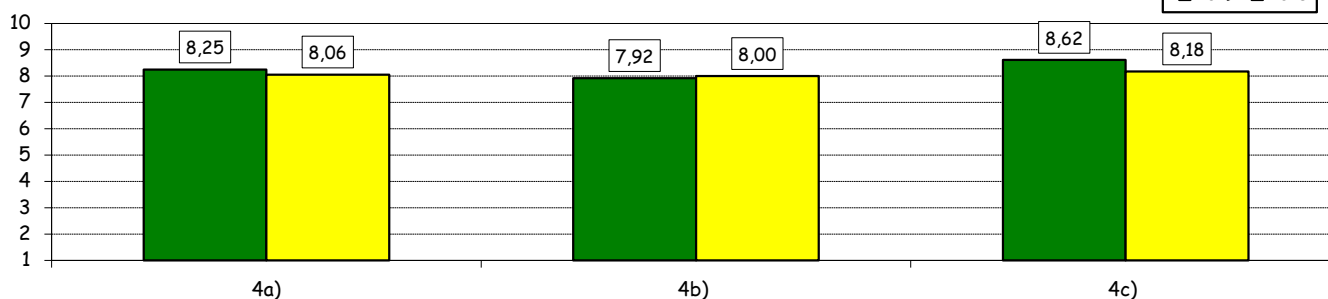
	a.v.	2019	2018
Italy	36	44,4%	46,1%
Abroad	45	55,6%	53,9%
<b>Total</b>	<b>81</b>	<b>100%</b>	<b>100%</b>
NA	0		



### How do you evaluate:

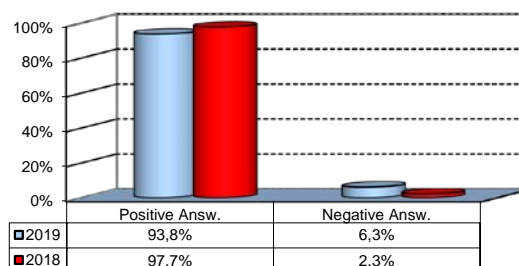
Item	Answers	Negative				Positive				Total	N.A.	
		1-2		3-4-5		6-7-8		9-10				
		a.v.	%	a.v.	%	a.v.	%	a.v.	%			
4a) The convenience of the internship front desk's opening hours.		0	0,0	1	8,3	7	58,3	4	33,3	12	100,0	1
4b) The numerosity and the variety of opportunities offered		1	7,7	1	7,7	5	38,5	6	46,2	13	100,0	0
4c) The support you received from Bocconi.		0	0,0	0	0,0	6	46,2	7	53,8	13	100,0	0

### Over time comparison



### 5) Do you positively evaluate this experience?

	a.v.	%
A - Definitely YES	65	81,3%
B - More YES than NO	10	12,5%
C - More NO than YES	5	6,3%
D - Definitely NO	0	0,0%
<b>Total</b>	<b>80</b>	<b>100%</b>
NA	1	



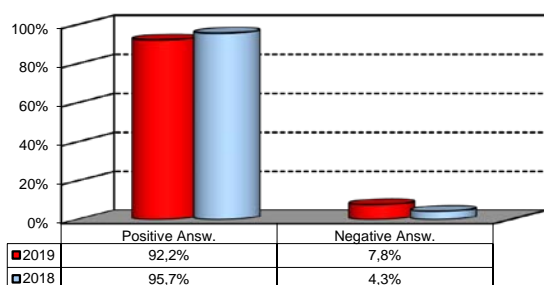
\*JobGate, Internship Programs, Companies' meetings and presentations, Bocconi&Jobs, Placement Library's services, Curricular Internship Special, websites reported in the section 'Lavoro.net'

## General satisfaction and short-term plans

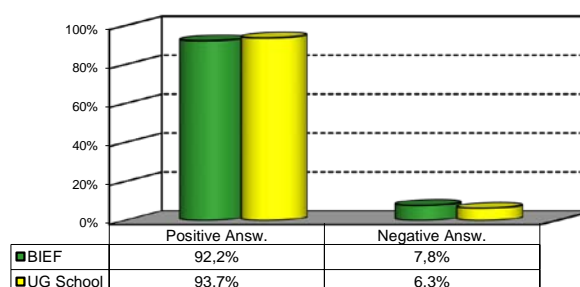
### 1) Are you overall satisfied with the Bachelor Program?

Answers	Italian School career		Int.nal School Career		Total	
	a.v.	%	a.v.	%	a.v.	%
A - Definitely YES	62	57,4%	48	49,0%	110	53,4%
B - More YES than NO	42	38,9%	38	38,8%	80	38,8%
C - More NO than YES	4	3,7%	9	9,2%	13	6,3%
D - Definitely NO	0	0,0%	3	3,1%	3	1,5%
<b>Total</b>	<b>108</b>	<b>100%</b>	<b>98</b>	<b>100%</b>	<b>206</b>	<b>100%</b>
NA	0		3		3	

Over time comparison



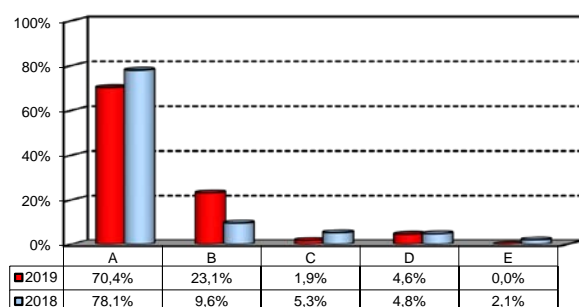
Comparison with the overall School data



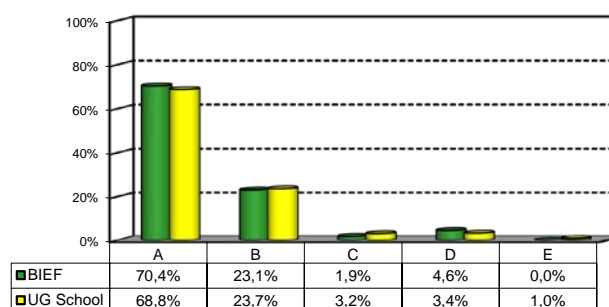
### 2a) If you could go back in time, would you enroll in the University again?

Answers	Italian School career		Int.nal School Career		Total	
	a.v.	%	a.v.	%	a.v.	%
A - YES, in the same Bachelor Program at this University	76	70,4%	60	61,2%	136	66,0%
B - YES, in another Program at this University	25	23,1%	18	18,4%	43	20,9%
C - YES, in the same Program but at another University	2	1,9%	10	10,2%	12	5,8%
D - YES, in another Program at another University	5	4,6%	8	8,2%	13	6,3%
E - NO, I would not enrol in any University program	0	0,0%	2	2,0%	2	1,0%
<b>Total</b>	<b>108</b>	<b>100%</b>	<b>98</b>	<b>100%</b>	<b>206</b>	<b>100%</b>
NA	0		3		3	

Over time comparison



Comparison with the overall School data



## General satisfaction and short-term plans

(In case of answer "B" to item no.2a)

**2b) Which Bachelor Program would you enroll at this University?**

<b>CdL</b>	<b>v.a.</b>	<b>%</b>
BEMACS	9	21,4%
BIEF	5	11,9%
BIEM	22	52,4%
BIG	0	0,0%
CLEACC	1	2,4%
CLEAM	0	0,0%
CLEF	1	2,4%
CLES	3	7,1%
CLMG	0	0,0%
WBB	1	2,4%
<b>Total</b>	<b>42</b>	<b>100%</b>

(In case of answer "C", "D" or "E" to item no.2a)

**2c) Why would you make a different choice?**

<b>Answers</b>	<b>Italian School career</b>		<b>Int.nal School Career</b>		<b>Total</b>		
	<b>v.a.</b>	<b>%</b>	<b>v.a.</b>	<b>%</b>	<b>2019</b>	<b>2018</b>	
					<b>v.a.</b>	<b>%</b>	<b>%</b>
A - My interest has changed during this time / I discovered that I have different attitudes	2	28,6%	7	35,0%	9	33,3%	21,7%
B - The Bachelor program did not mirror my expectations	3	42,9%	6	30,0%	9	33,3%	26,1%
C- I have not been admitted to the Bachelor Program selected as first-choice.	0	0,0%	0	0,0%	0	0,0%	8,7%
D- The campus and its facilities and services were not up to my expectations	1	14,3%	5	25,0%	6	22,2%	8,7%
E- I would have preferred to attend the same Bachelor Program but taught in English.	0	0,0%	0	0,0%	0	0,0%	0,0%
F - Other reasons	1	14,3%	2	10,0%	3	11,1%	34,8%
<b>Total</b>	<b>7</b>	<b>100%</b>	<b>20</b>	<b>100%</b>	<b>27</b>	<b>100%</b>	<b>100%</b>
NA	0		0		0		

**F- Other reasons:**

I believe economics and finance is a great subject to study after a bachelor's program in a different field, for me it would have been engineering. Bocconi itself however doesn't have anything to review except internship opportunities for bachelor student

The teaching methods could be modernised by focusing less on memorisation and more on critical analysis, group projects etc. I think less emphasis should be given on exams and more on learning what you are studying. More learning by doing would be needed.

This University shows very little regard and support for its students - this is why I'd have chosen a different University. I'd have chosen a different program because I realised after the first year I was interested in Management instead of Finance.

## General satisfaction and short-term plans

### 3) In the near future do you intend:

	Italian School career		Int.nal School Career		Total		2018 %
	a.v.	%	a.v.	%	2019 a.v.	2019 %	
A- To go on with university studies at Bocconi (Master of Science, one-year Master of Science)	43	52,4%	16	20,0%	59	36,4%	36,3%
B-To go on with university studies at another Italian University	2	2,4%	1	1,3%	3	1,9%	2,3%
C- To go on with university studies abroad	29	35,4%	37	46,3%	66	40,7%	38,6%
D - To immediately look for a job	4	4,9%	13	16,3%	17	10,5%	5,8%
E - To accept a job which has already been proposed to you	3	3,7%	12	15,0%	15	9,3%	14,6%
F - To continue to do the job you began during this degree program	1	1,2%	1	1,3%	2	1,2%	2,3%
<b>Total</b>	<b>82</b>	<b>100%</b>	<b>80</b>	<b>100%</b>	<b>162</b>	<b>100%</b>	<b>100%</b>
NA	26		21		47		

### 4) If you intend to go on with university studies at other University (in Italy or abroad), what are the reasons of this choice? (multiple answers admitted)

	Italian School career		Int.nal School Career		Total		2018 %
	a.v.	%	a.v.	%	2019 a.v.	2019 %	
A - I would like to attend a more prestigious university	9	17,3%	11	17,2%	20	17,2%	18,3%
B - I would like to build a strong international curriculum	24	46,2%	30	46,9%	54	46,6%	47,6%
C- I can not bear the cost of studies (tuition fees and cost of living)	3	5,8%	3	4,7%	6	5,2%	3,2%
D - I can not bear the cost of studies (tuition fees and cost of living)	5	9,6%	2	3,1%	7	6,0%	7,1%
E- The administrative services are not sufficiently efficient	1	1,9%	3	4,7%	4	3,4%	6,3%
F - I think that the contents of Bocconi's MSc programs do not differ much from those of undergraduate programs	3	5,8%	8	12,5%	11	9,5%	7,1%
G - Other reasons	7	13,5%	7	10,9%	14	12,1%	10,3%
<b>Total</b>	<b>52</b>	<b>100%</b>	<b>64</b>	<b>100%</b>	<b>116</b>	<b>100%</b>	<b>100%</b>
NA	0		1		1		

## General satisfaction and short-term plans

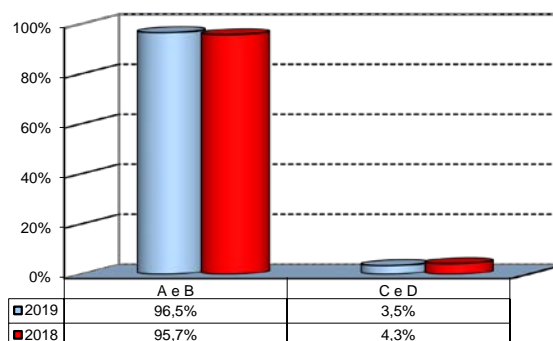
### G - Other reasons:

Better to have a french master Grande Ecole than an additional degree at Bocconi, as I intend to start my career in France
I also felt the need to change the environment, staying 5 years at the same uni would have been too much.
I am looking for a more practical program.
I applied for masters in December and got an offer a month and a half later. My opinion might have been different if we could apply to Bocconi University earlier on.
I didn't fit too well into the social environment of Bocconi.
I find master programs more specialized compared to undergraduate and i found other econometric programs much more suited to my interest.
I want to experience other ways of studying and other university cultures
I want to pursue my studies in France.
I want to work in the United States
I would like to study a course not offered at Bocconi.
I would not be accepted
Il metodo di selezione per studenti interni Bocconi è limitante e preclude la scelta a molti studenti molto più meritevoli di quelli effettivamente selezionati
Im not satisfied with my current university subject choice
nel procedimento di selezione per l'ammissione ai corsi magistrali, l'universita Bocconi classifica i suoi studenti utilizzando solamente la media scolastica e senza dare neanche la minima importanza a quelle che sono le attivita extracurricolari che formano uno studente nel suo intero. conseguentemente ho deciso di fare domanda ad altre universita che tengono in considerazione tutti questi fattori oltre alla media scolastica. (ho fatto domanda in Bocconi ma non credo che verrò presa, ho quindi gia accettato un'offerta dall'ESADE). Inoltre, ci tengo a sottolineare che l'assenza di uno numero telefonico o di un ufficio in grado di rispondere alle domande degli studenti sia assurdo. Help&Contact è poco apprezzato dagli studenti essendo l'UNICO canale di comunicazione tra studenti e universita. Non è possibile dover aspettare giorni interi per avere risposte su argomenti a volte imminenti e urgenti!
Non sono stato ammesso al corso di laurea magistrale che mi interessava
Prestige is relative to a geographical zone. I don't intend to pursue a complete career in Italy, hence studying for a master's in another university abroad would make sense.
The university is MIT
Variare nel curriculum

## Infrastructure: Classrooms, Library And Facilities

1) What is your opinion about the classrooms where lessons and other teaching activities have been carried out?\*

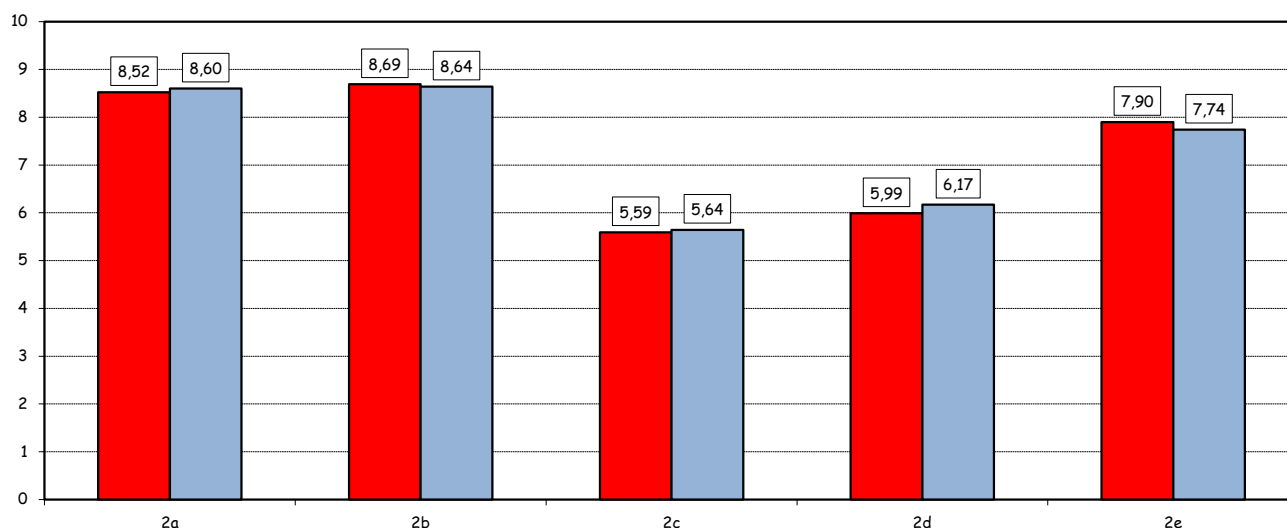
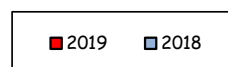
Answers	a.v.	%
A - Always or nearly always adequate	113	55,9%
B - Often adequate	81	40,1%
C - Rarely adequate	6	3,0%
D - Never adequate	1	0,5%
E - I did not use them	1	0,5%
<b>Total</b>	<b>202</b>	<b>100%</b>
NA	7	



2) How do you evaluate:

Item	Answers	Negative				Positive				Total	NA	N.R.	
		1-2		3-4-5		6-7-8		9-10					
		a.v.	%	a.v.	%	a.v.	%	a.v.	%				
a) The functionality of the audio and multi-media systems (e.g. teacher's computer, projectors, video players) installed in the classrooms		0	0,0	7	3,4	84	41,2	113	55,4	204	100,0		5
b) The cleanliness of classrooms and of other common areas of the University (corridors, halls, study rooms)		2	1,0	6	3,0	63	31,0	132	65,0	203	100,0		6
c) The adequacy (in number) of the areas/seats reserved to individual study in the University Library		37	20,3	48	26,4	58	31,9	39	21,4	182	100,0	10	17
d) The adequacy (in number) of the areas/seats reserved to individual study in the other University buildings		31	16,0	46	23,7	79	40,7	38	19,6	194	100,0	9	6
e) The clarity and adequacy of the internal sign system		2	1,0	23	11,4	90	44,8	86	42,8	201	100,0		8

Over time comparison

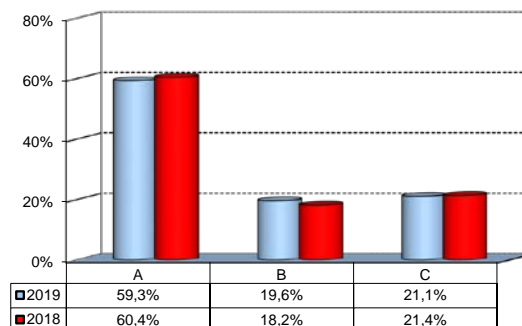


(\*): the percentage shown on the graphs is calculated by excluding the responses of those who declare that they have not used the service.

## Infrastructure: Classrooms, Library And Facilities

3) What is your overall opinion on PC Laboratories and IT facilities provided by the University?

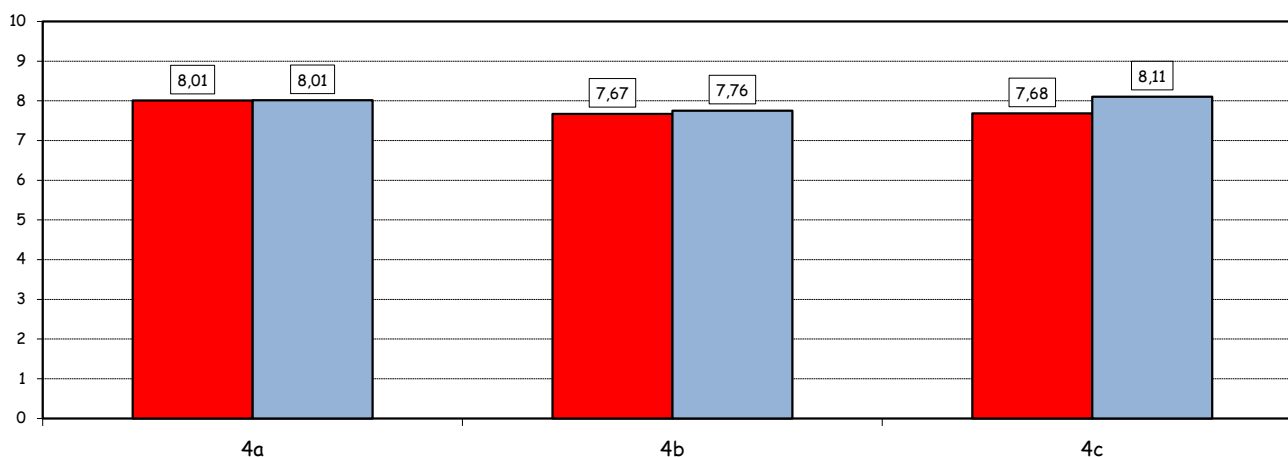
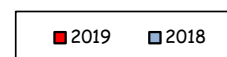
Answers	a.v.	%
A- Adequate in number	121	59,3%
B- Inadequate in number	40	19,6%
C- Never used	43	21,1%
<b>Total</b>	<b>204</b>	<b>100%</b>
NA	5	



4) How do you evaluate:

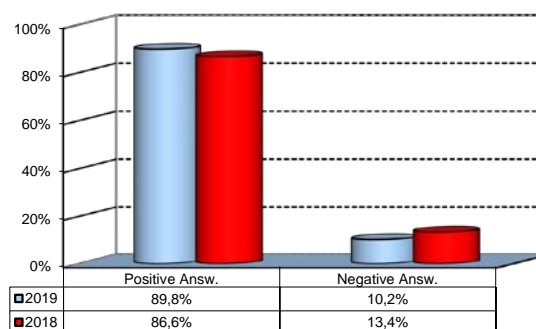
Item	Answers	Negative				Positive				Total		NA
		1-2		3-4-5		6-7-8		9-10		a.v.	%	
		a.v.	%	a.v.	%	a.v.	%	a.v.	%			
a) The availability of technical staff supporting students.^		1	0,6	14	8,8	74	46,5	70	44,0	159	100,0	2
b) The convenience of the PC laboratories' opening hours.^		2	1,3	14	9,2	86	56,2	51	33,3	153	100,0	8
c) The level of accessibility and use of University's I.T. services (Internet access points, "Punto Blu", Virtual "Punto Blu", wireless connection).		2	1,0	22	11,1	107	53,8	68	34,2	199	100,0	10

Over time comparison



5) What is your overall opinion on the Library's services as support for individual study?\*

Answers	a.v.	%
A - Very Positive	60	29,7%
B - Quite positive	107	53,0%
C - Quite negative	16	7,9%
D - Very Negative	3	1,5%
E - Never used	16	7,9%
<b>Total</b>	<b>202</b>	<b>100%</b>
NA	7	



(\*): Only in case of answer "A" or "B" to item no.3

(\*): the percentage shown on the graphs is calculated by excluding the responses of those who declare that they have not used the service.